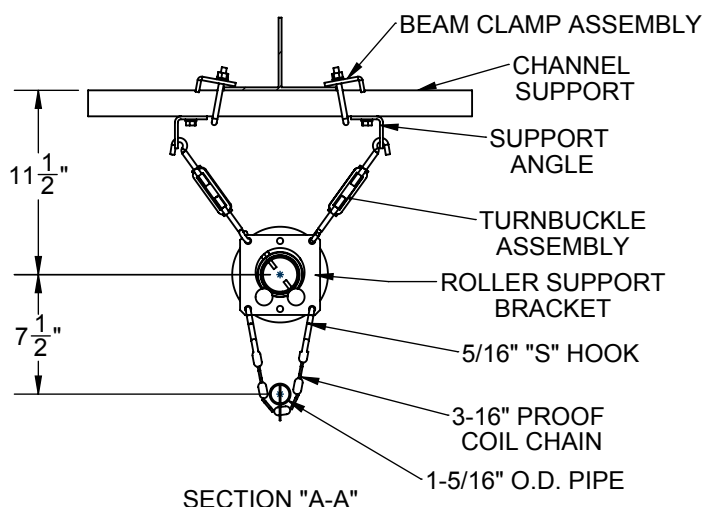
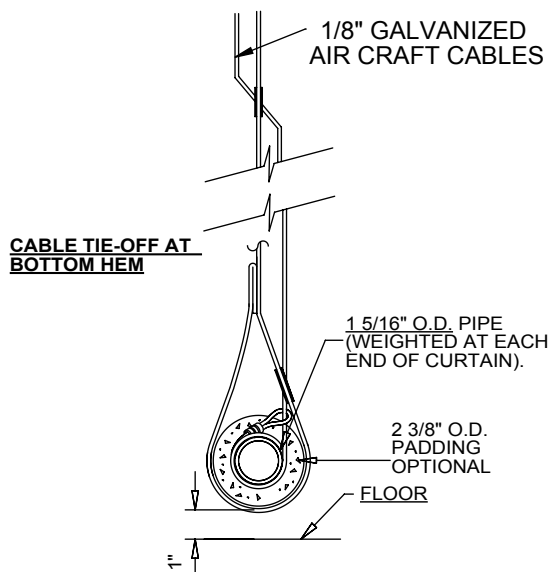
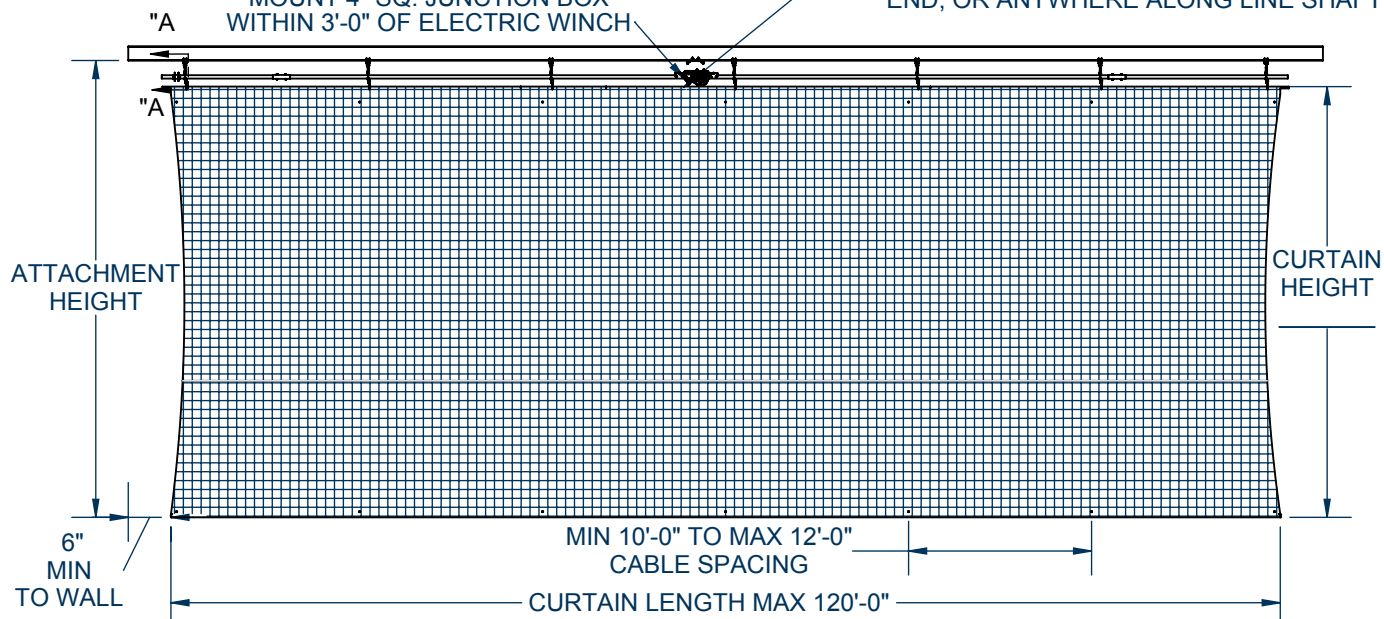


# 90670N00 - ROLL FOLD GYMNASIUM DIVIDER NET

MAXIMUM SIZE 120'-0" LONG AND 4000 SQ. FT.

ELECTRICIAN NOTE:  
MOUNT 4" SQ. JUNCTION BOX  
WITHIN 3'-0" OF ELECTRIC WINCH

WINCH LOCATED AT CENTER (STANDARD),  
END, OR ANYWHERE ALONG LINE SHAFT



| COLOR COMBINATIONS |         |               |               |
|--------------------|---------|---------------|---------------|
| OPTION             | NETTING | VINYL POCKETS | ROPE SUPPORTS |
| 1                  | BLACK   | BLACK         | BLACK         |
| 2                  | GREEN   | GREEN         | BLACK         |
| 3                  | WHITE   | WHITE         | WHITE         |

| NET MATERIAL OPTIONS               | BREAKING STRENGTH |
|------------------------------------|-------------------|
| #96 KNOTTED 1-3/4" MESH (DISCUS)   | 940 LBS           |
| #36 KNOTTED 1-3/4" MESH (BASEBALL) | 340 LBS           |
| #21 KNOTTED 1-3/4" MESH (BASEBALL) | 210 LBS           |
| #420 KNOTLESS 3/4" MESH (GOLF)     | 135 LBS           |
| #252 KNOTLESS 3/4" MESH (GOLF)     | 95 LBS            |

\_\_\_\_\_ - 90670N00 ROLL FOLD GYMNASIUM DIVIDER NET  
 \_\_\_\_\_ - CURTAIN HEIGHT  
 \_\_\_\_\_ - CURTAIN LENGTH  
 \_\_\_\_\_ - NET MATERIAL  
 \_\_\_\_\_ - NET COLOR

# 90670N00 - ROLL FOLD GYMNASIUM DIVIDER NET

MAXIMUM SIZE 120'-0" LONG AND 4000 SQ. FT.

## SPECIFICATIONS

The curtain shall be made of a nylon netting material. The netting material shall meet the National Fire Protection Association Standard 701 Small Scale Test for flammability resistance.

Top of curtain to be fabricated with a vinyl pocket to conceal continuous 1-5/16" O.D. steel tube extending the full length of the curtain to ensure proper support. Tube shall be supported from roller assembly supports on adjustable chains not exceeding 12'-0" centers.

Curtain shall be hoisted by 1/8" dia. vandal-proof galvanized cable (2,100 lb. breaking strength each cable, spaced between 10'-0" and 12'-0" apart) passing thru steel ring type cable guides on approximate 24" centers. Bottom end of cables to terminate around 1-5/16" O.D. tube in bottom pocket, secured with concealed nicropress, swaged type clamps. Bottom support tube shall be encased in a 2-1/8" O.D., closed cell shock absorbing type protective foam rubber padding. Cables shall be routed thru steel ring cable guides on one side of the curtain to fold the curtain in a compact accordion fold arrangement the curtain is hoisted.

Upper ends of hoist cables shall terminate into individual hoist drums positioned on continuous zinc-plated 2-3/8" O.D. tube line shaft arrangement. Line shaft shall turn in special support assemblies equipped with four steel ball bearing wheel rollers. Each support assembly shall be positioned adjacent to a cable hoist drum. Support assemblies shall be secured to structural roof framing supports by means of threaded rods and support chains to provide structural integrity and accommodate all slopes or building camber.

See winch specifications for more information on included Porter winch system and control options. (see C-701)

All metal parts not zinc-plated shall be powder coated. See swatch card SMPL00048037 for standard color options. (contact Porter for custom color requests)

## OPTIONAL SPECIFICATIONS

- Line Shaft Safety Lock (No. 10796000): Curtain shall incorporate internal centrifugal force type lock mechanism into the line shaft to automatically lock equipment if lowering speed surpasses expected and safe velocity. two shall be required for curtains with line shafts exiting both sides of winch.

## WARRANTY

- 670 curtains come with a 1 year limited warranty.
- Other components may be covered by their own extended warranty.

## ACCESSORIES

- Floor Hockey Curtain Pad (No. 00357012)
- Audible Motion Alarm (No. 12005100)

## NET OPTIONS

#252 Knotless 3/4" 95 lbs (Golf)  
#420 Knotless 3/4" 135 lbs (Golf)  
#21 Knotted 1 3/4" 210 lbs (Baseball)  
#36 Knotted 1 3/4" 340 lbs (Baseball)  
#96 Knotted 1 3/4" 940 lbs (Discus)

## COLOR OPTIONS

### **NET**

Black, Green, White

Note: Rope hem and rope supports will be black if the netting is black or green. The rope hem and rope supports will be white if the netting white.

## LEED® SUBMITTAL INFORMATION

| Credit                  | Measure   |
|-------------------------|---|
| MRc4-Recycled Content   | Post Consumer Average 10.0%      Post Industrial 0%   |
| MRc5-Regional Materials | Raw materials originate from multiple sources so origin point cannot be determined. Final Manufacturing/Assembly in Champaign, IL 61822 |