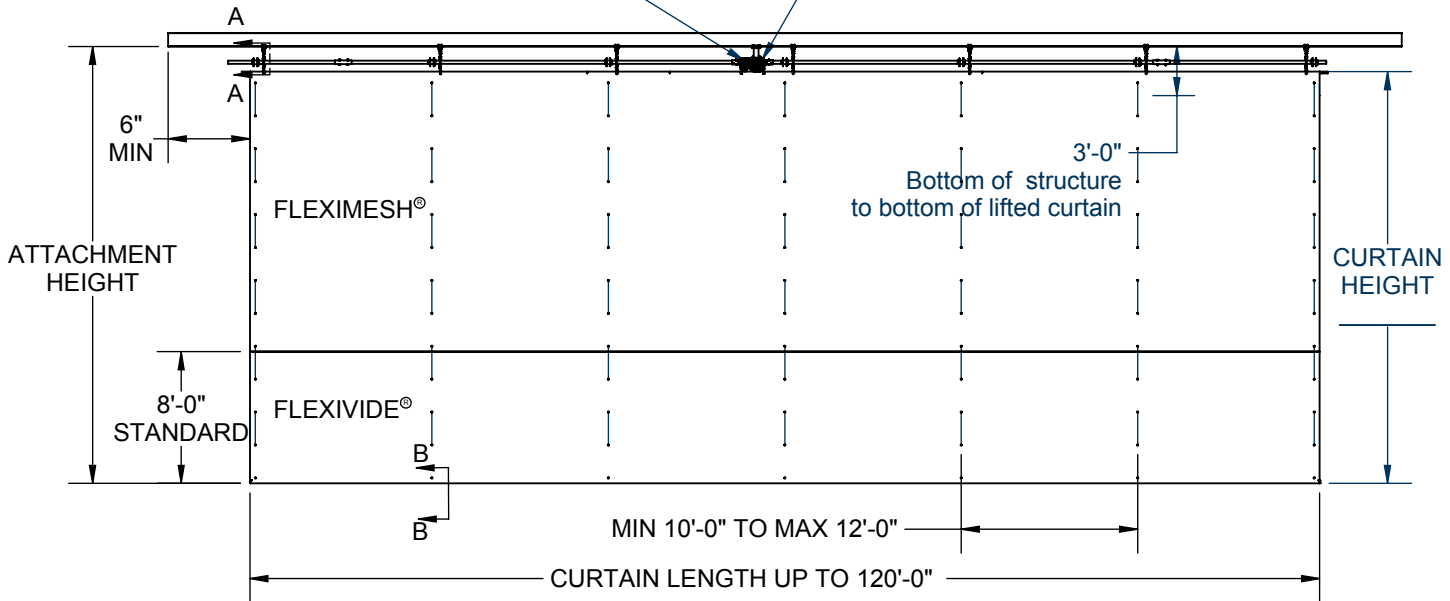


# 90670000 - ROLL FOLD GYMNASIUM DIVIDER CURTAIN

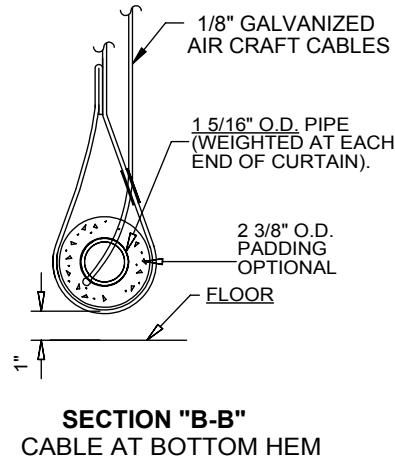
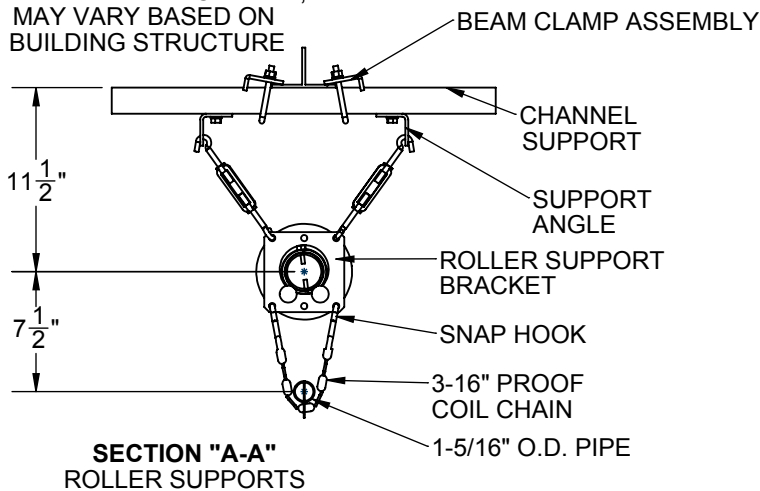
MAXIMUM SIZE 120'-0" LONG AND 4,800 SQ. FT.

ELECTRICIAN NOTE:  
MOUNT 4" SQ. JUNCTION BOX  
WITHIN 3'-0" OF ELECTRIC WINCH

WINCH LOCATED AT CENTER (STANDARD),  
END, OR ANYWHERE ALONG LINE SHAFT.



STANDARD ATTACHMENT,  
MAY VARY BASED ON  
BUILDING STRUCTURE



ESTIMATED WINCH BASED ON  
CURTAIN SIZE WITH 8' OF SOLID VINYL  
(SOME CONDITIONS MAY REQUIRE  
DEVIATION FROM CHART)

LOW TORQUE (UP TO 16 FT/MIN)

MEDIUM TORQUE (UP TO 8 FT/MIN)

HIGH TORQUE (UP TO 5 FT/MIN)

CURTAIN HEIGHT (FT)	CURTAIN WIDTH (FT)											
	10	20	30	40	50	60	70	80	90	100	110	120
	400	800	1200	1600	2000	2400	2800	3200	3600	4000	4400	4800
	300	600	900	1200	1500	1800	2100	2400	2700	3000	3300	3600
CURTAIN HEIGHT (FT)	CURTAIN WIDTH (FT)											
	10	20	30	40	50	60	70	80	90	100	110	120
	200	400	600	800	1000	1200	1400	1600	1800	2000	2200	2400
	100	200	300	400	500	600	700	800	900	1000	1100	1200

- 90670000 ROLL FOLD DIVIDER CURTAIN

- CURTAIN HEIGHT

- CURTAIN LENGTH

- FLEXIMESH® SELECTION (SEE SMPL00048036)

- FLEXIVIDE® SELECTION (SEE SMPL00048035)

Need more info? Use this QR code



# 90670000 - ROLL FOLD GYMNASIUM DIVIDER CURTAIN

MAXIMUM SIZE 120'-0" LONG OR 4,800 SQ. FT.

## SPECIFICATIONS

The 670 curtain is available in the following configurations:

- Solid and Mesh (as specified below)
- All Solid
- All Mesh
- Solid and Mesh with Padded Bottom Tube
- All Solid with Padded Bottom Tube
- All Mesh with Padded Bottom Tube

Lower section of curtain shall be 8'-0" high Flexivide® solid vinyl, polyester reinforced 19 oz. vinyl coated fabric (per square yard, containing antibacterial, fungi-resistant and flame-retardant chemicals to meet requirements of ASTM E-84 Class A Rating (25 Flame Spread, 450 Smoke Development), and NFPA-701 large scale, ULC S-109 large and small scale, and State of California test requirements). Upper section of curtain shall be of Fleximesh®, designed for air breathing areas in gym dividers, tennis screens or other custom air transfer applications. Fleximesh® material shall be an open polyester type interlocking grid weave coated with polyvinyl chloride with an approximate 45 to 50% open area. Weight of material is 8 oz. per square yard. Flame resistant (meets California Health and Safety Code Section 13115 Large and Small Scale Test, Fed. Std. 191A, CPAI-84, NFPA 701, BIFMA F-1-78, MSHA-155). Fleximesh® begins at a standard height of 8'-0" above the floor (custom heights available). Curtain may also be furnished in all-solid (Flexivide®) or all-mesh (Fleximesh®) upon request.

Top of curtain to be fabricated with a pocket to conceal continuous 1-5/16" O.D. steel tube extending the full length of the curtain to ensure proper support. Tube shall be supported from roller assembly supports on adjustable chains not exceeding 12'-0" centers.

Curtain shall be hoisted by 1/8" diagonal vandal-proof galvanized cable (2,100 lb. breaking strength each cable, spaced between 10'-0" and 12'-0" apart) passing thru metal spur grommet type cable guides on approximate 18" centers. Bottom end of cables to terminate with factory applied ball end fittings through 1-5/16" O.D. tube in bottom pocket. Cables shall be routed thru cable guides to fold the curtain in a compact accordion fold arrangement, which lies across bottom support tube as curtain is hoisted. D-ring hoist systems shall not be approved as equal.

Upper ends of hoist cables shall terminate into individual hoist drums positioned on continuous zinc-plated 2-3/8" O.D. tube line shaft arrangement. Line shaft shall turn in support assemblies equipped with four steel ball bearing wheel rollers. Each support assembly shall be positioned adjacent to a cable hoist drum. Support assemblies shall be secured to structural roof framing supports by means of threaded rods and support chains to provide structural integrity and accommodate all slopes or building camber.

See winch specifications for more information on included Porter winch system and control options. (see C-702)

All metal parts not zinc-plated shall be powder coated. See swatch card [SMPL00048037](#) for standard color options. (contact Porter for custom color requests)

## OPTIONAL SPECIFICATIONS

- Bottom Pad: Bottom support tube shall be encased in a 2-1/8" O.D., closed cell shock absorbing type protective foam rubber padding.
- Line Shaft Safety Lock (No. 10796000): Curtain shall incorporate internal centrifugal force type lock mechanism into the line shaft to automatically lock equipment if lowering speed surpasses expected and safe velocity. Two shall be required for curtains with line shafts exiting both sides of winch.

## WARRANTY

- 670 curtains come with a 1 year limited warranty.
- Other components may be covered by their own extended warranty.

## ACCESSORIES

- Floor Hockey Curtain Pad (No. 00357012)
- Audible Motion Alarm (No. 12005100)

## COLOR OPTIONS

### **FLEXIVIDE®**

See [SMPL00048035](#)

### **FLEXIMESH®**

See [SMPL00048036](#)

## LEED® SUBMITTAL INFORMATION

Credit	Measure
MRc4-Recycled Content	Post Consumer Average 10.0%      Post Industrial 0%
MRc5-Regional Materials	Raw materials originate from multiple sources so origin point cannot be determined. Final Manufacturing/Assembly in Champaign, IL 61822

ISSUED MARCH 28, 2018. SUBJECT TO CURRENT MANUFACTURING PROCEDURES AND CHANGES

COPYRIGHT 2018 - PORTER ATHLETIC - ALL RIGHTS RESERVED

PORTER@PORTERATHLETIC.COM

PORTER  
WWW.PORTERATHLETIC.COM/FACILITY

CURTAIN SPECIFICATION SHEET

C-670

3/28/2018