

E-2080-1-M - WIRING DETAIL

FIELD WIRING INSTRUCTIONS FOR No. 2080 CURTAIN ELECTRIC OPERATOR

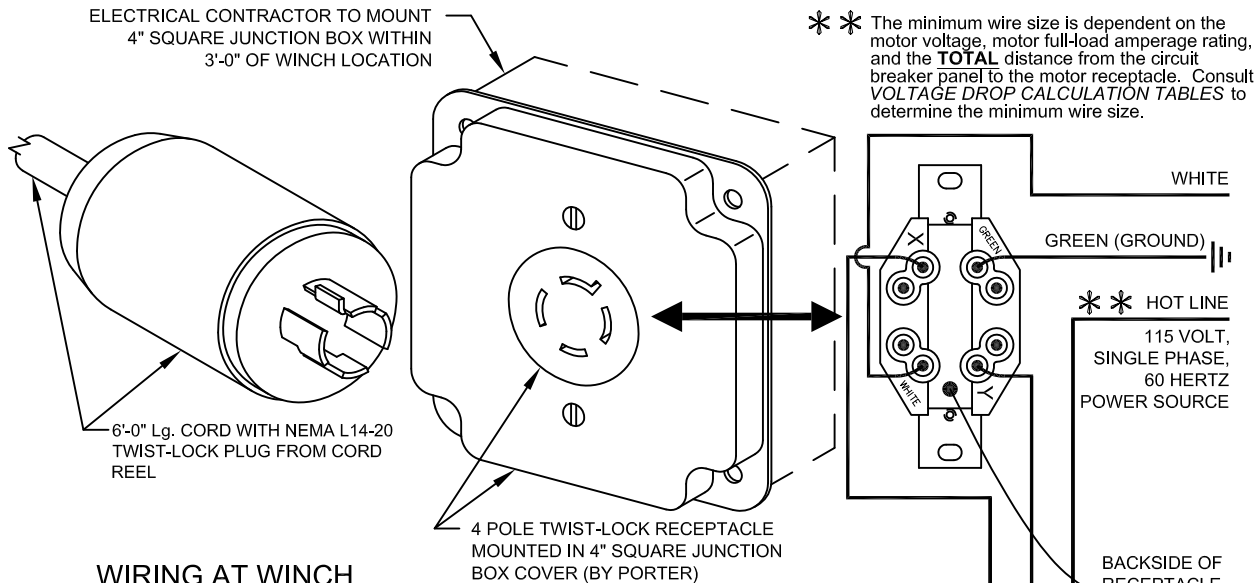
PORTER

WWW.PORTERATHLETIC.COM/FACILITY

WIRING DETAIL & REQUIREMENT SHEET

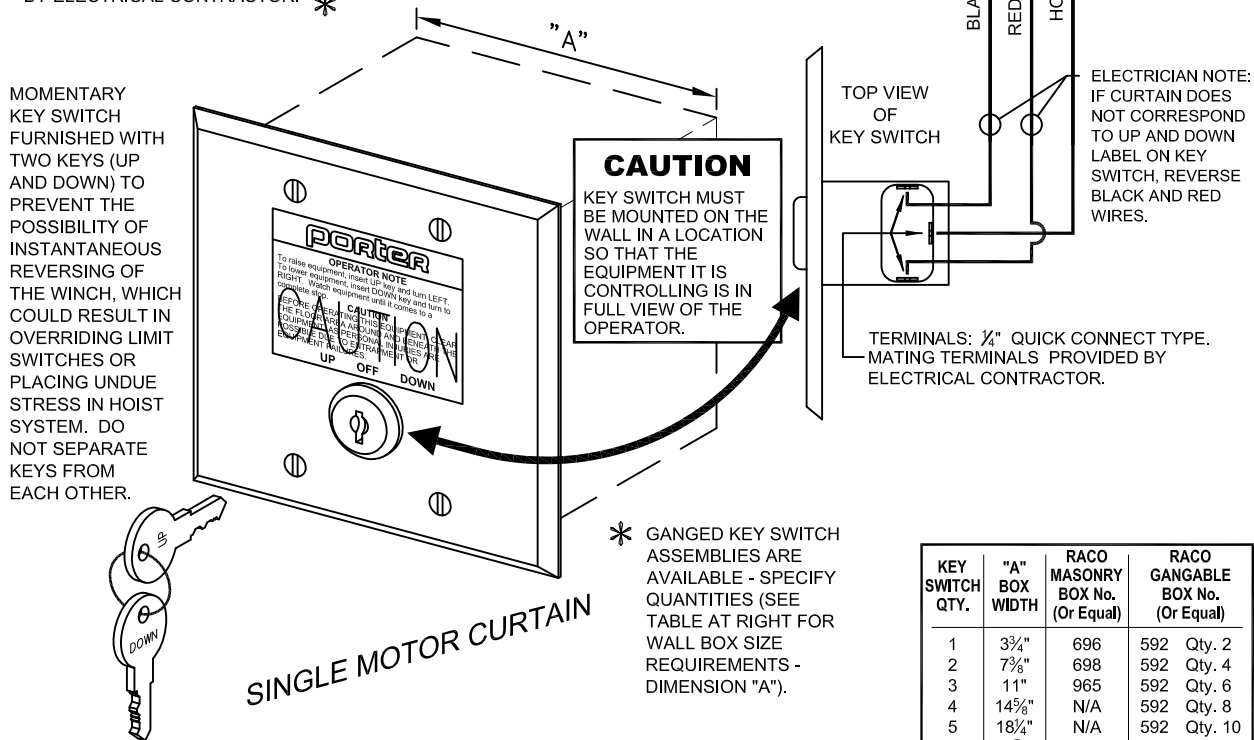
E-2080-1-M

ELECTRIC WINCH FIELD WIRING DETAILS & REQUIREMENTS



WIRING AT WINCH

INDIVIDUAL KEY SWITCH MOUNTED IN A STANDARD 4 1/2" SQUARE FLUSH-MOUNTED STAINLESS STEEL COVER PLATE FOR MOUNTING IN A 4" SQUARE x 3 1/2" DEEP MASONRY BOX (RACO No. 696 OR EQUAL) BY ELECTRICAL CONTRACTOR.



WIRING AT WALL MOUNTED KEY SWITCH

IMPORTANT NOTE - PERFORMANCE OF WINCH IS BASED ON 115 VOLTS AT MOTOR TERMINALS. VOLTAGES LESS THAN 115 VOLTS WILL AFFECT HOISTING CAPACITY AND RESULT IN DAMAGE TO MOTOR, THUS VOIDING WARRANTY. **SUBSTITUTION** OF THIS KEY SWITCH WILL VOID ALL WARRANTIES AND WILL RENDER THE OPERATION OF BACKSTOPS / CURTAINS UNSAFE.

PORTER®

888-277-7778 PORTER@PORTERATHLETIC.COM
© COPYRIGHT 2014 PORTER ATHLETIC - ALL RIGHTS RESERVED

PROJECT NUMBER

PROJECT NAME

6/18/2014