

90926000 - STATIONARY BACKSTOP

CEILING SUSPENDED, STATIONARY UNIT
32' TO 40' \varnothing OF MAST PIPE TO FINISHED FLOOR

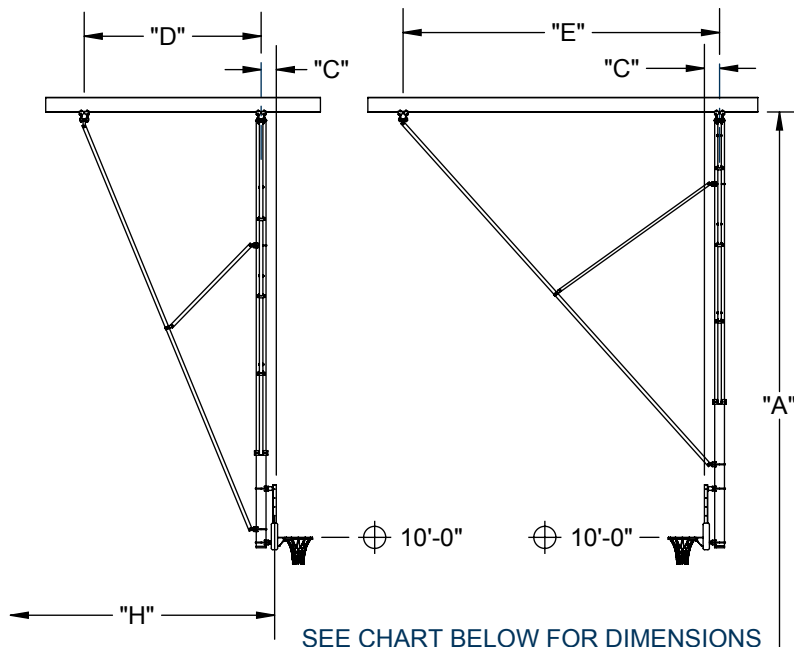
PRECISION DIE-FORMED SUPPORT FITTING STANDARD
(MAY VARY BASED ON GYMNASIUM SUPERSTRUCTURE)

GYMNASIUM SUPERSTRUCTURE
(SHOWN FOR REPRESENTATION
PURPOSES ONLY, MAY VARY)

$\varnothing 3\frac{1}{2}$ " O.D. PIPE STANDARD
(SUPERSTRUCTURE ENGINEERED PER BUILDING REQUIREMENTS)

BOLTED MAST

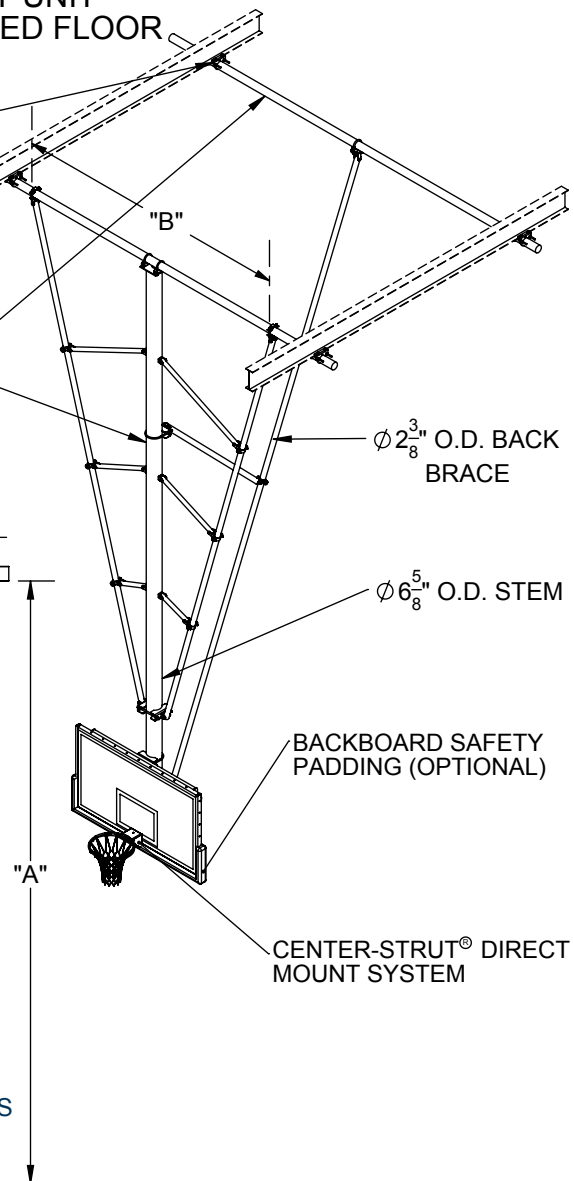
AVAILABLE ORIENTATIONS



SEE CHART BELOW FOR DIMENSIONS

"A" BOTTOM OF STRUCTURE ABOVE FINISHED FLOOR	"B" MAST CENTERS	"C" FACE OF BACKBOARD TO \varnothing MAST HANGER	"D" BACK BRACE DIMENSION	"E" FRONT BASE DIMENSION (WITHIN 6" \pm)	"H" MINIMUM FACE OF BACKBOARD TO WALL
32' 0-1/8" to 33'-0"	10'-9"	SEE "C" DIMENSION CHART	13'-1"	15'-11"	12'-1"
33' 0-1/8" to 34'-0"	10'-9"		13'-8"	16'-9"	12'-7"
34' 0-1/8" to 35'-0"	11'-10"		14'-3"	17'-7"	13'-0"
35' 0-1/8" to 36'-0"	11'-10"		14'-10"	18'-5"	13'-6"
36' 0-1/8" to 37'-0"	13'-0"		15'-5"	19'-4"	14'-0"
37' 0-1/8" to 38'-0"	13'-0"		16'-0"	20'-2"	14'-5"
38' 0-1/8" to 39'-0"	14'-2"		16'-7"	21'-0"	14'-11"
39' 0-1/8" to 40'-0"	14'-2"		17'-2"	21'-9"	15'-4"

*OPTIMUM DIMENSION GIVEN; SEE DIMENSION "H" FOR MINIMUM REQUIREMENTS



"C" DIMENSION CHART - FACE OF BACKBOARD TO CENTERLINE OF MAST HANGER			
BACKBOARD MODEL NUMBER	DESCRIPTION	WITHOUT HEIGHT ADJUSTER	WITH HEIGHT ADJUSTER
208	RECTANGULAR GLASS	10-1/8"	12-11/16"
216	RECTANGULAR FIBERGLASS	9-7/8"	12-7/16"
234A	FAN ALUMINUM	9-5/16"	11-7/8"
267A	FAN FIBERGLASS	9-1/4"	11-13/16"

_____ - 90926000 CEILING SUSPENDED, STATIONARY UNIT

- _____ - BACKBOARD SELECTION
- _____ - GOAL SELECTION
- _____ - PADDING SELECTION

90926000 - STATIONARY BACKSTOP

CEILING SUSPENDED, STATIONARY UNIT
32' TO 40' \varnothing OF MAST PIPE TO FINISHED FLOOR

SPECIFICATIONS

Basketball backstop shall consist of a main center mast of 6-5/8" O.D. heavy-wall structural steel tube with diagonal side sway braces of 2-3/8" O.D. structural pipe. Top horizontal mast member to be of a heavy 3-1/2" O.D. tubing to form a rigid triangular design. Internal web type bracing of heavy 1-7/8" O.D. tube shall be provided as required by unit size. Mast shall be shipped as a bolt-together assembly due to size of unit. Mast shall be suspended by adjustable hangers (3) to provide for precise plumbing of frame during installation.

Goal shall mount directly through backboard and into a heavy structural steel Center-Strut® weldment which shall be clamped to the vertical 6-5/8" O.D. center support to eliminate any strain on backboard should a player hang on the front mounted goal (conforms to the NCAA latest rules). All fittings shall be attached to the 6-5/8" O.D. vertical drop tube by heavy 1/4" thick precision saddle die-cut formed steel fittings secured in place by 5/8" diameter 'U'-Bolt type hardware.

Welded mast to be supported in a fixed playing position with a single 2-3/8" O.D. diagonal back brace mounted to superstructure pipe. Back brace shall be further supported by 1-7/8" O.D. internal bracing.

Backstop shall be supported from pipe anchored to roof framing members by precision die formed support fittings or custom attachments as required. All cap screws shall be rated a minimum SAE Grade 5. Grade 2 cap screws will not be approved as equal. Bridged pipes may be required when spans exceed 14'.

All metal parts shall be powder coated. See swatch card SMPL00048037 for standard color options. (contact Porter for custom color requests)

Backstop provided with specified backboard and goal (see B-200 for options).

WARRANTY

- No. 900 Center-Strut® series backstop structure comes with a 25 year limited warranty.
- Limited Lifetime warranty on all Porter backboards when used in conjunction with the No. 900 Center-Strut® series backstop.
- Other components may be covered by their own warranty (see corresponding specifications for more details).

OPTIONAL ITEMS (SEE SPECIFICATION SHEETS FOR DETAIL)

- Backboard safety padding (see B-200)
- Height Adjuster (8' to 10' adjustable goal height) (see chart below)

CENTER-STRUT® HEIGHT ADJUSTER

- | | |
|---|---|
| • For Manual Operation, See Page No.: | B-900-506 (Rectangular Boards) B-900-211 (Fan Boards) |
| • For Key Switch Operation, See Page No.: | B-901-506 (Rectangular Boards) B-901-211 (Fan Boards) |
| • For Powr-Stick Operation, See Page No.: | B-902-506 (Rectangular Boards) B-902-211 (Fan Boards) |
| • For Sportsonic® II Operation, See Page No.: | B-903-506 (Rectangular Boards) B-903-211 (Fan Boards) |
| • For Powr-Touch Operation, See Page No.: | B-904-506 (Rectangular Boards) B-904-211 (Fan Boards) |

LEED® SUBMITTAL INFORMATION

Credit	Measure
MRc4-Recycled Content	Post Consumer Average 25.0% Post Industrial 0%
MRc5-Regional Materials	Raw materials originate from multiple sources so origin point cannot be determined. Final Manufacturing/Assembly in Champaign, IL 61822

CERTIFICATIONS

- Certified by the NCAA and NFHS