

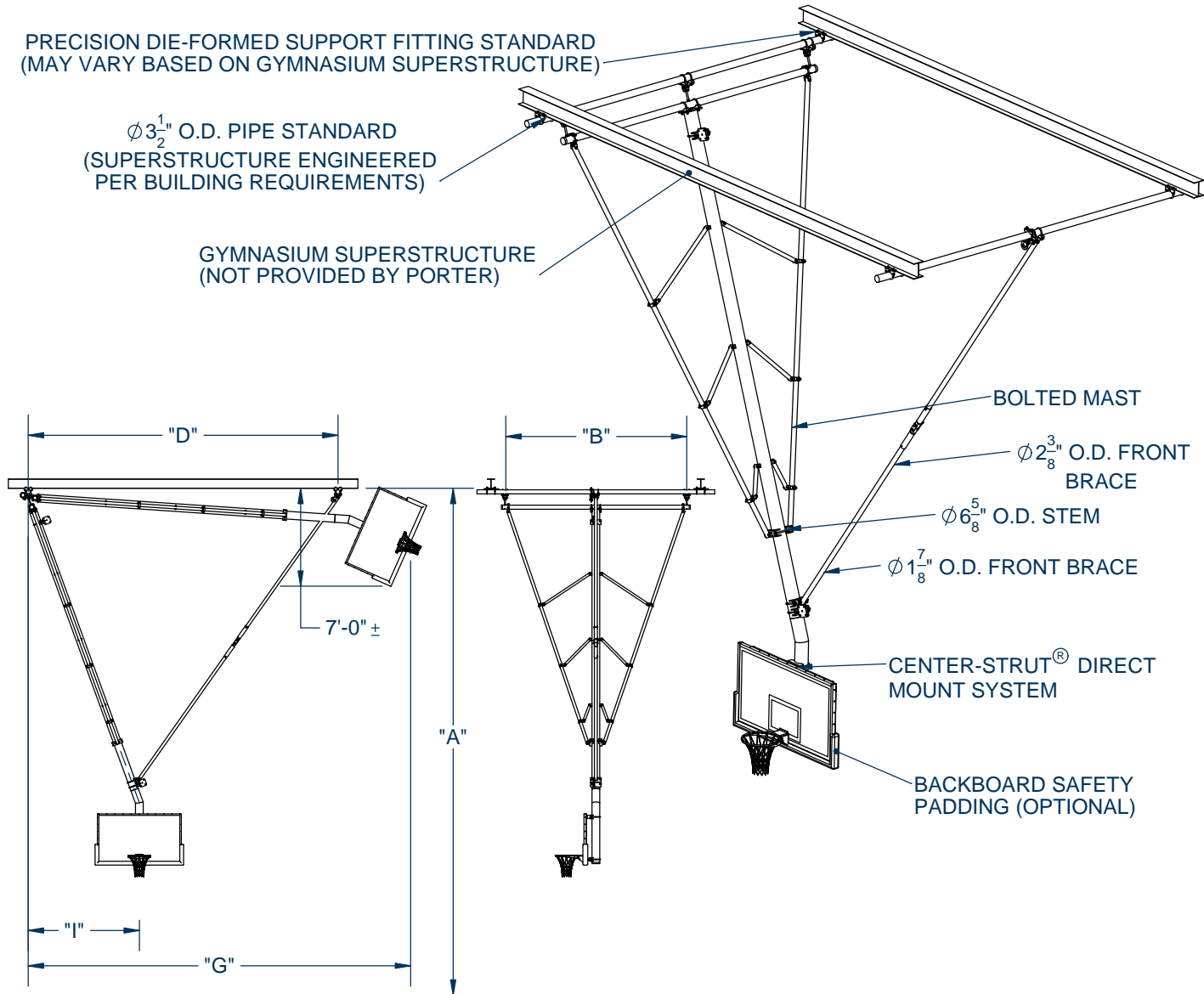
90956000 - SIDE FOLD BACKSTOP

CEILING SUSPENDED, SIDE FOLD, SIDE BRACED UNIT
32' TO 36' ATTACHMENT HEIGHT

PRECISION DIE-FORMED SUPPORT FITTING STANDARD
(MAY VARY BASED ON GYMNASIUM SUPERSTRUCTURE)

$\phi 3\frac{1}{2}$ " O.D. PIPE STANDARD
(SUPERSTRUCTURE ENGINEERED
PER BUILDING REQUIREMENTS)

GYMNASIUM SUPERSTRUCTURE
(NOT PROVIDED BY PORTER)



"A" BOTTOM OF STRUCTURE ABOVE FINISHED FLOOR	"B" MAST CENTERS	"C" FACE OF BACKBOARD TO CL MAST	"D" FRONT BRACE DIMENSION (WITHIN 6" ±)	"E" HORIZONTAL FOLD DIMENSION	"F" CL OF MAST TO MAST HANGER
32' 0-1/8" to 33'-0"	12'-0"	SEE	17'-8"	23'-6"	4'-10"
33' 0-1/8" to 34'-0"	12'-0"		18'-8"	24'-6"	5'-1"
34' 0-1/8" to 35'-0"	13'-0"		19'-8"	25'-6"	5'-5"
35' 0-1/8" to 36'-0"	13'-0"	"C"	20'-9"	26'-7"	5'-8"
36' 0-1/8" to 37'-0"	14'-0"	DIMENSION	21'-9"	27'-7"	5'-11"
37' 0-1/8" to 38'-0"	14'-0"		22'-10"	28'-8"	6'-2"
38' 0-1/8" to 39'-0"	15'-0"		23'-10"	29'-8"	6'-6"
39' 0-1/8" to 40'-0"	15'-0"	CHART	24'-10"	30'-9"	6'-9"

"C" DIMENSION CHART- FACE OF BACKBOARD TO CENTERLINE OF MAST			
BACKBOARD MODEL NUMBER	DESCRIPTION	WITHOUT HEIGHT ADJUSTER	WITH HEIGHT ADJUSTER
00208000	RECTANGULAR GLASS	10-1/8"	12-11/16"
00216000	RECTANGULAR FIBERGLASS	9-7/8"	12-7/16"
00228300	RECTANGULAR WOOD	9-5/16"	11-7/8"
00234300	FAN ALUMINUM	9-5/16"	11-7/8"
00267698	FAN FIBERGLASS	9-1/4"	11-13/16"

- _____ - 90956000 CEILING SUSPENDED, SIDE FOLD, SIDE BRACED UNIT
- _____ - BACKBOARD SELECTION
- _____ - GOAL SELECTION
- _____ - PADDING SELECTION

90956000 - SIDE FOLD BACKSTOP

CEILING SUSPENDED, SIDE FOLD, SIDE BRACED UNIT
32' TO 40' ATTACHMENT HEIGHT

SPECIFICATIONS

Basketball backstop shall consist of a main center mast of 6-5/8" O.D. heavy-wall structural steel tube with diagonal side sway braces of 2-3/8" O.D. structural pipe. The 6-5/8" O.D. main stem of the drop frame shall be suspended diagonally from the superstructure with a 15° angle and a 4'-6" long vertical member for attachment of a backboard. Top horizontal mast member to be of a heavy 3-1/2" O.D. tubing to form a rigid triangular design. Internal web type bracing of heavy 1-7/8" O.D. tube shall be provided as required by unit size. Mast shall be shipped as a bolt-together assembly due to size of unit. Mast shall be suspended by adjustable hangers (3) to provide for precise plumbing of frame during installation.

Goal shall mount directly through backboard and into a heavy structural steel Center-Strut® weldment which shall be clamped to the vertical 6-5/8" O.D. center support to eliminate any strain on backboard should a player hang on the front mounted goal (conforms to the NCAA latest rules). All fittings shall be attached to the 6-5/8" O.D. vertical drop tube by heavy 1/4" thick precision saddle die-cut formed steel fittings secured in place by 5/8" diameter 'U'-Bolt type hardware.

Backstop to operate with a 2-3/8" O.D. front brace assembly with a folding knee joint. Knee joint to incorporate an internal torsion spring design to lock brace assembly firmly in playing position. Hoist cable shall automatically disengage brace knee joint during the hoist cycle through a three-pulley system.

Backstop shall be supported from pipe anchored to roof framing members by precision die formed support fittings or custom attachments as required. All cap screws shall be rated a minimum SAE Grade 5. Grade 2 cap screws will not be approved as equal. Bridged pipes may be required when spans exceed 14'.

All metal parts shall be powder coated. See swatch card SMPL00048024 for standard color options. (contact Porter for custom color requests)

Backstop provided with specified backboard and goal (see B-200 for options).

See winch specifications for more information on included Porter winch system and control options. (B-701)

WARRANTY

- No. 900 Center-Strut® series backstop structure comes with a 25 year limited warranty.
- Limited Lifetime warranty on all Porter backboards when used in conjunction with the No. 900 Center-Strut® series backstop.
- Other components may be covered by their own warranty (see corresponding specifications for more details).

OPTIONAL ITEMS (SEE SPECIFICATION SHEETS FOR DETAIL)

- Backboard safety padding (see B-200)
- Height Adjuster (8' to 10' adjustable goal height) (see chart below)
- Saf-Strap (No. 10797100)
- Retractor Reel (No. 10799100, 10799110); with Saf-Strap (No. 10799200, 10799210)

CENTER-STRUT® HEIGHT ADJUSTER

- | | | |
|---|--------------------------------|------------------------|
| • For Manual Operation, See Page No.: | B-900-506 (Rectangular Boards) | B-900-211 (Fan Boards) |
| • For Key Switch Operation, See Page No.: | B-901-506 (Rectangular Boards) | B-901-211 (Fan Boards) |
| • For Powr-Stick Operation, See Page No.: | B-902-506 (Rectangular Boards) | B-902-211 (Fan Boards) |
| • For Sportsonic® II Operation, See Page No.: | B-903-506 (Rectangular Boards) | B-903-211 (Fan Boards) |
| • For Powr-Touch Operation, See Page No.: | B-904-506 (Rectangular Boards) | B-904-211 (Fan Boards) |

LEED® SUBMITTAL INFORMATION

Credit	Measure
MRc4-Recycled Content	Post Consumer Average 25.0% Post Industrial 0%
MRc5-Regional Materials	Raw materials originate from multiple sources so origin point cannot be determined. Final Manufacturing/Assembly in Champaign, IL 61822