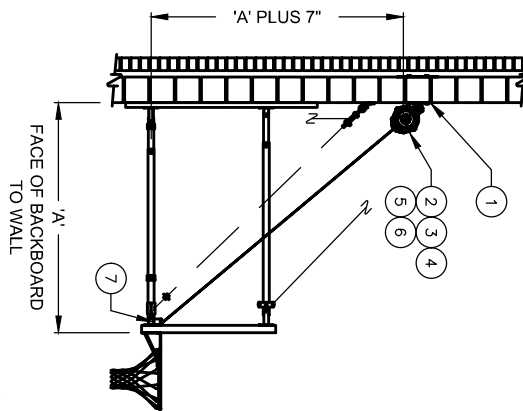
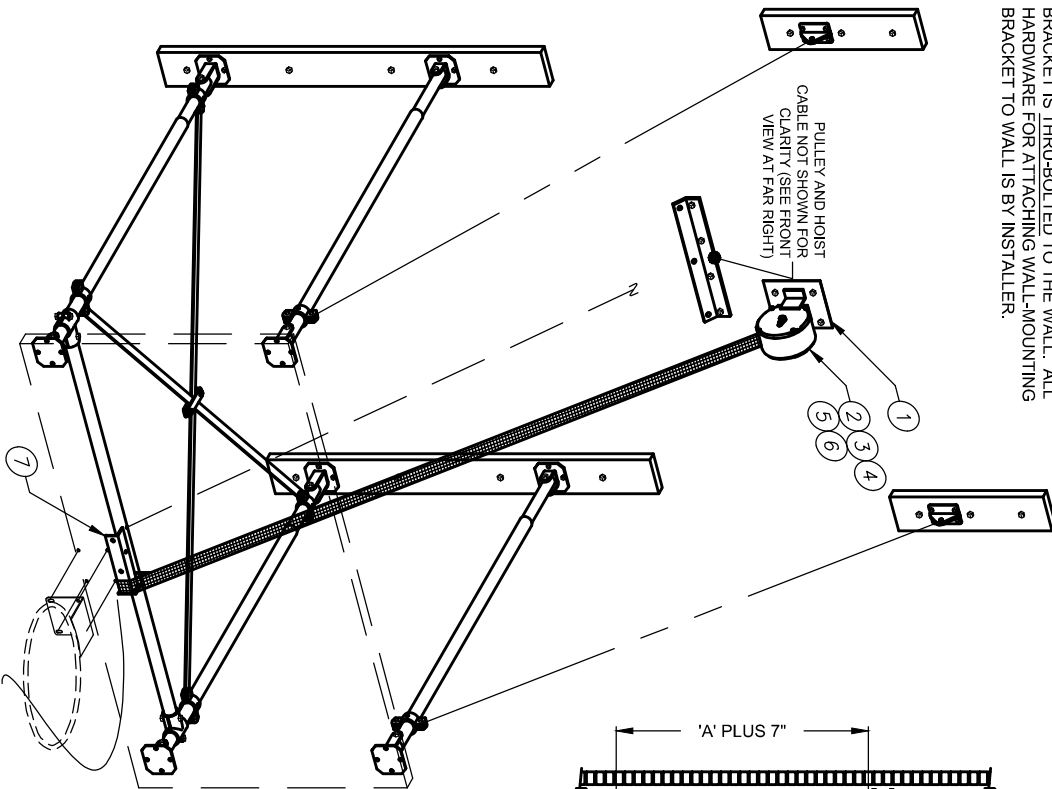


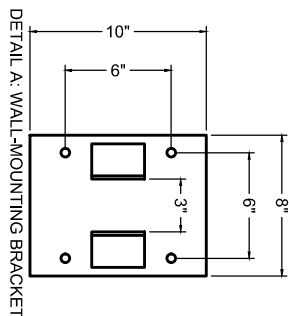
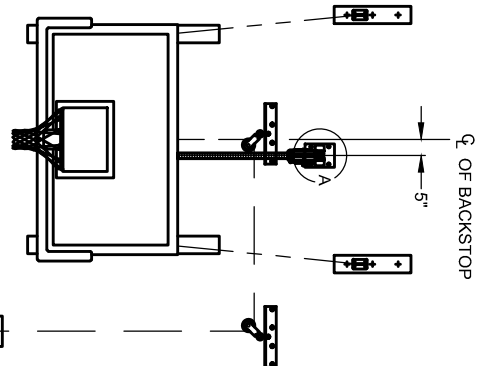
## 10797120 - SAF-STRAP WALL ADAPTER

SAFETY STRAP ADAPTER KIT FOR No. 219 WALL-MOUNTED BACKSTOP  
WITHOUT HEIGHT ADJUSTER

IT IS MANDATORY THAT THE WALL-MOUNTING BRACKET IS THRU-BOLTED TO THE WALL. ALL HARDWARE FOR ATTACHING WALL-MOUNTING BRACKET TO WALL IS BY INSTALLER.



CHAIN SUPPORTS NOT SHOWN IN SIDE VIEW



No.	QTY.	DESCRIPTION
1	1	797W SAFETY STRAP WALL MOUNT BRACKET
2	1	797 SAFETY STRAP
3	4	HDWE011870E0 HEX HEAD CAP SCREW 1/2"-13 X 5\" GR5
4	4	HDWE030030E0 1/2\" FLAT WASHER
5	4	HDWE040030E0 1/2\" LOCK WASHER
6	4	HDWE030030E0 1/2"-13 HEX NUT
7	1	CLMP00069002 STRAP TIE-OFF

STRAP TIE-OFF ATTACHES TO UPPER GOAL MOUNTING SCREWS. ADDITIONAL HOLE PROVIDED FOR CABLE TIE-OFF AS REQUIRED.

SAFETY STRAP ADAPTER KIT FOR No. 219 WALL-MOUNTED UP-FOLD BACKSTOP WITHOUT HEIGHT ADJUSTER

10797120

# 10797120 - SAF-STRAP WALL ADAPTER

SAFETY STRAP ADAPTER KIT FOR No. 219 WALL-MOUNTED BACKSTOP  
WITHOUT HEIGHT ADJUSTER

## SPECIFICATIONS

### PORTER No. 10797120 SAFETY STRAP ADAPTER KIT FOR No. 219 WALL-MOUNTED FOLD-UP BACKSTOP WITHOUT CENTER-STRUT® HEIGHT ADJUSTMENT UNIT

The safety strap shall be directly speed sensitive to automatically lock a basketball backstop or divider curtain in position at any time. The device will lock, whether in storage or during the raising/lowering cycle, in the event of an over-speed occurrence due to a malfunction of the hoisting apparatus, such as winch, cable, pulleys, support fittings, etc., Any increase in cycle speed or tension, whether sudden or gradual, immediately activates the locking device.

The device shall incorporate a 2" wide belt. The entire unit must be capable of withstanding a test using a 1750 lb falling weight, without strap failure or structural damage.

The locking mechanism must be fail-safe, meaning that any sticking, jamming or breakage of any of the components of the arresting mechanism results in immediate, positive locking of the reel.

The locking mechanism must react to the actual speed of the reel and prevent it from exceeding normal operating parameters regardless of whether the load suddenly drops by breakage of a component in the hoisting apparatus or whether it accelerates more slowly, as caused by a back-driving winch or the yielding of a structural component.

The locking mechanism must be self-checking, meaning that during normal use the mechanism is in constant motion to The strap shall extend a maximum of 36 feet and shall have a safety alert patch stitched to the strap to indicate the maximum safe extension.

The strap shall incorporate a breakaway loop stitched into its lower end to indicate if the unit has been subjected to a heavy load. A bright colored warning label must be exposed if the loop stitching has been broken.

The strap shall be automatically retracted and stored on a reel equipped with a special negator type constant force spring.

The strap anchoring system must bear on the full width of the strap and be capable of taking the full breaking strength of the strap.

The reel must be supported in bearings on both sides to assure that there is no deflection under heavy load, which would cause the strap to be misaligned and suffer damage.

The unit shall incorporate a fully automatic reset requiring no poles, ropes, levers or buttons to be used.

Unit shall be furnished with front and back mounting plates specifically designed to mount the device to the wall. Lower end of the belt shall be wrapped around the Center-Strut® Height Adjuster span tube. Belt shall be supplied with a special belt connection bracket for ease of securing directly to the span tube.

PORTER

WWW.PORTERATHLETIC.COM/FACILITY

SAF-STRAP SPECIFICATION SHEET

W--797