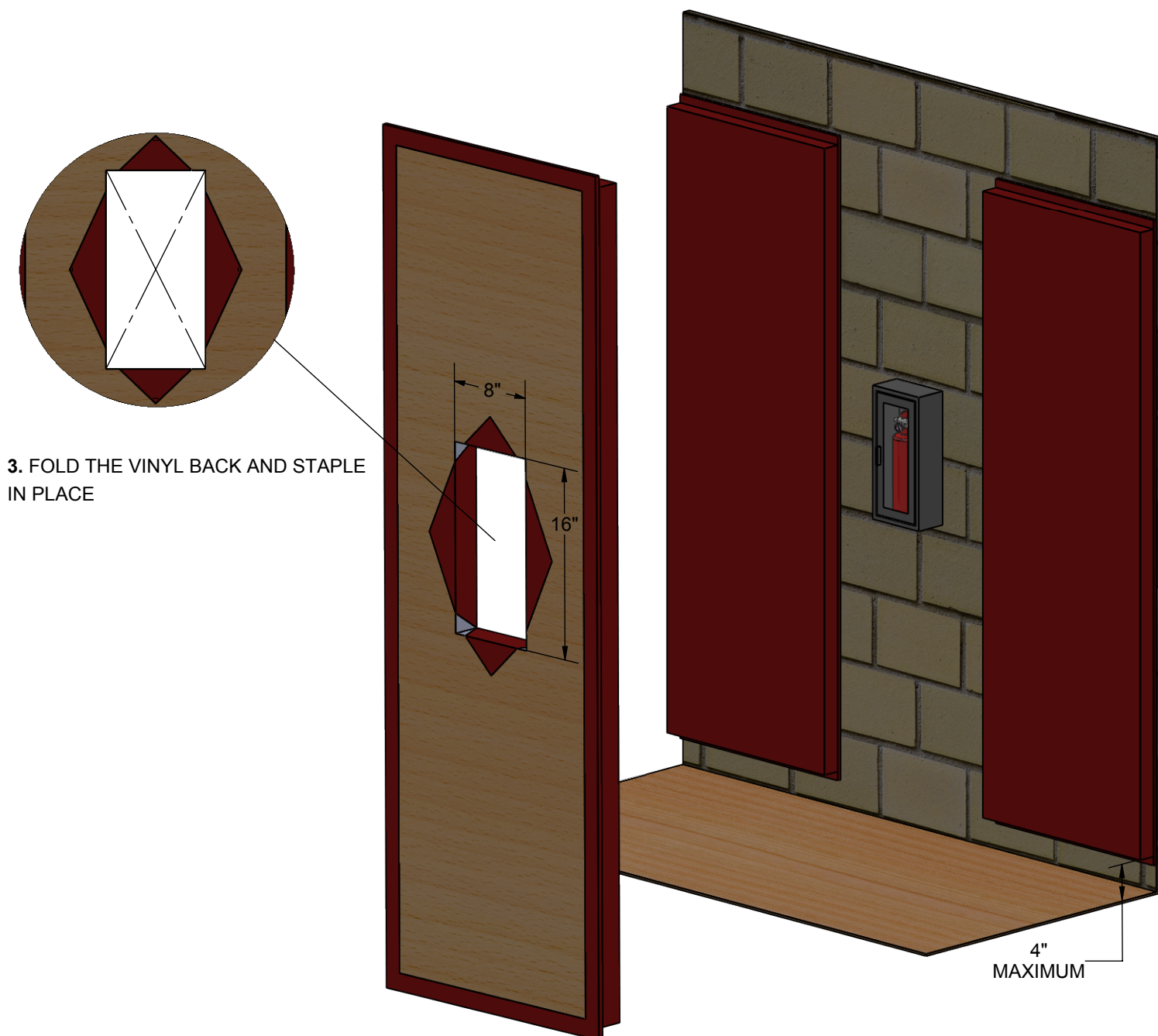
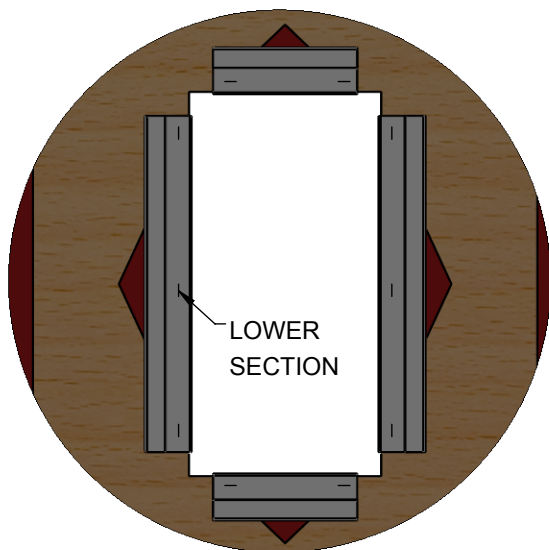
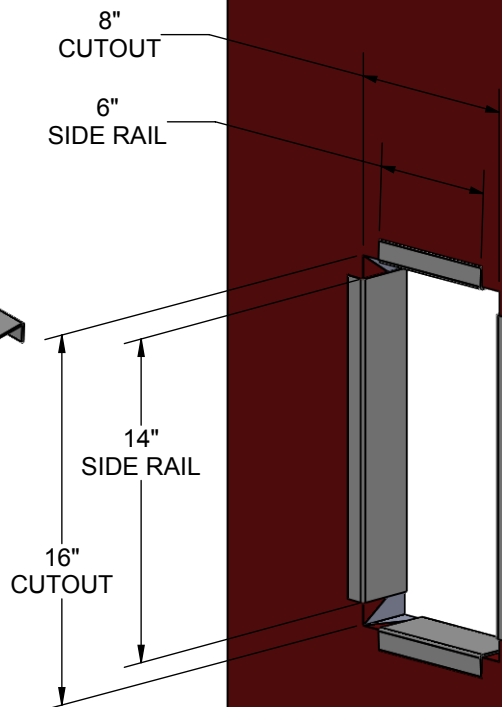
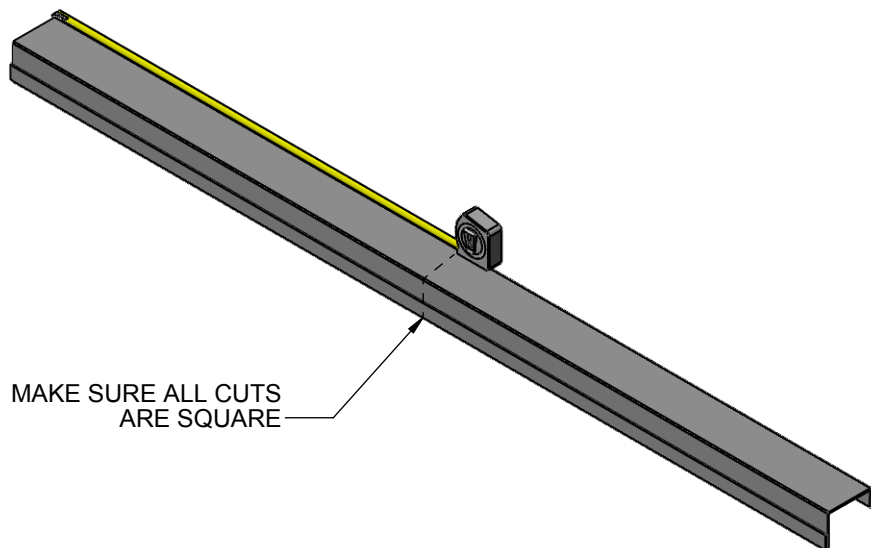


1. MEASURE AND CUTOUT PAD FOR THE WALL OBSTRUCTION. SET THE SAW DEPTH SHORT OF THE VINYL

2. SCORE THE VINYL FROM THE CORNERS TO CENTER OF THE CUTOUT



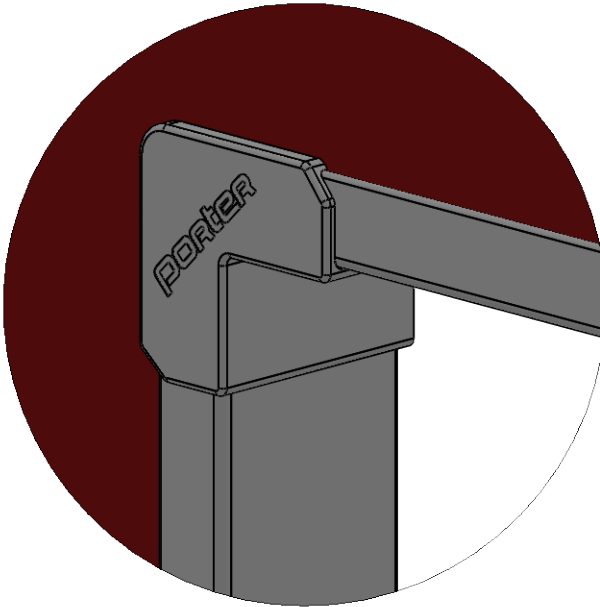
### 4. MEASURE AND CUT SIDE RAILS 2" SHORTER THAN THE CUTOUT DIMENSION



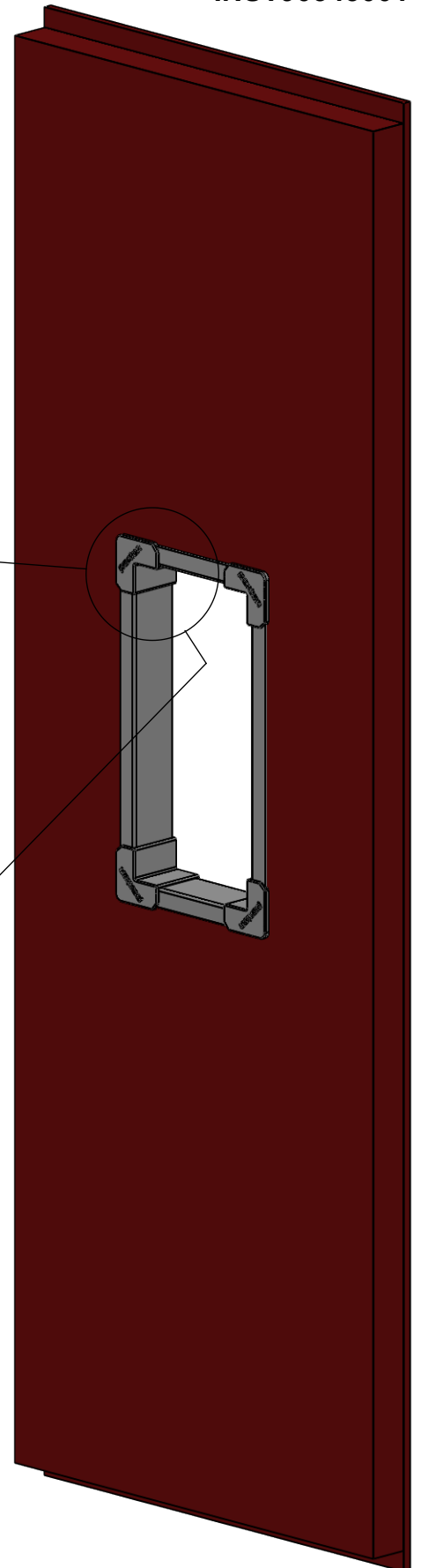
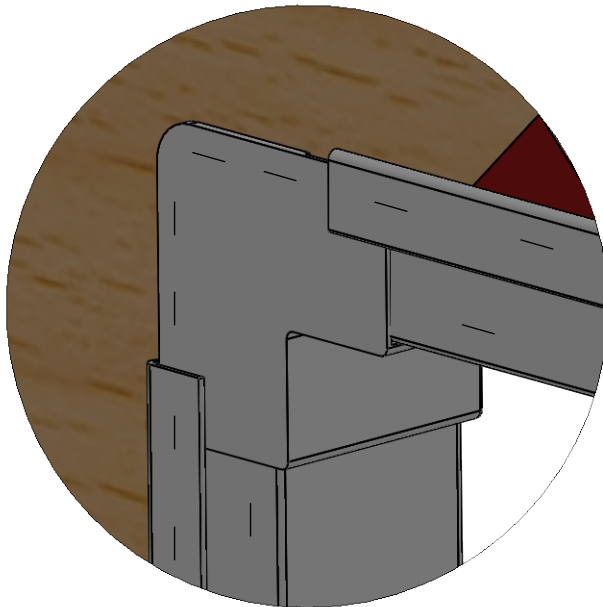
### 5. ATTACH SIDE RAILS AND STAPLE ON THE LOWER SECTION ONLY

### 5. INSERT CORNER PIECES.

MAKE SURE THE BACK TAB LOCKS INTO THE SIDE RAILS.



### 6. STAPLE ENTIRE ASSEMBLY



7. CHECK FINAL ASSEMBLY FOR STABILITY.

ADD GLUE UNDER THE FRONT LIP AS NEEDED.

