

INNER VOLLEYBALL UPRIGHTS ARE UNIVERSALLY ADJUSTABLE

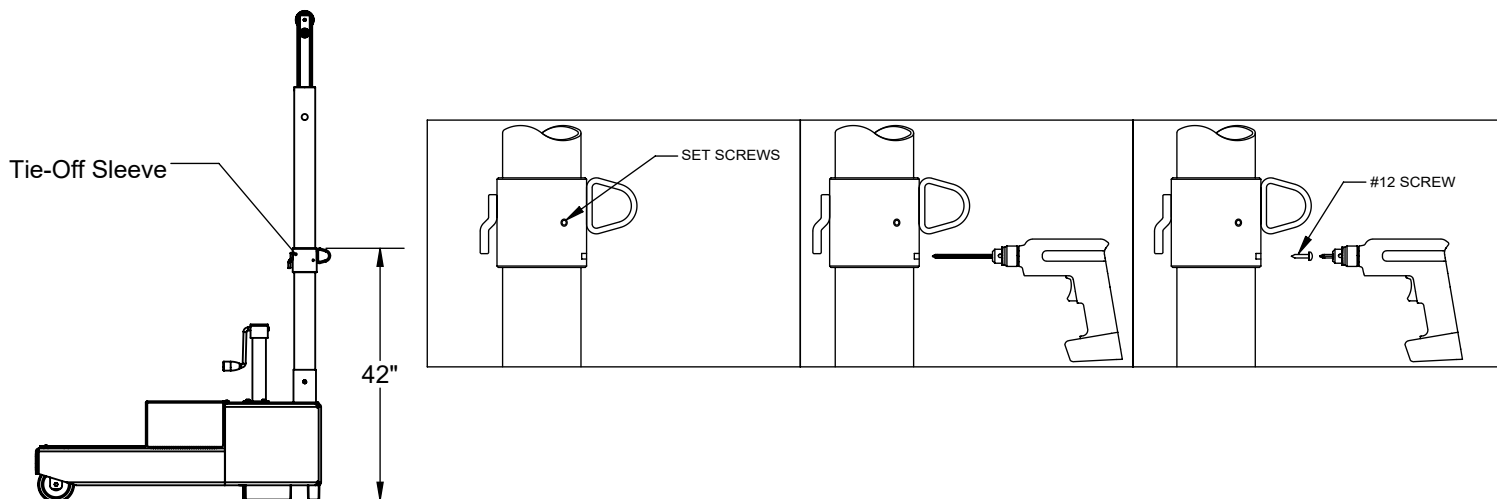
CAUTION

BEFORE rolling this portable volleyball system onto any floor, check with the flooring manufacturer to ensure the finished floor will not be damaged due to the weight of this unit. Each portable can weigh as much as 1,300 pounds.

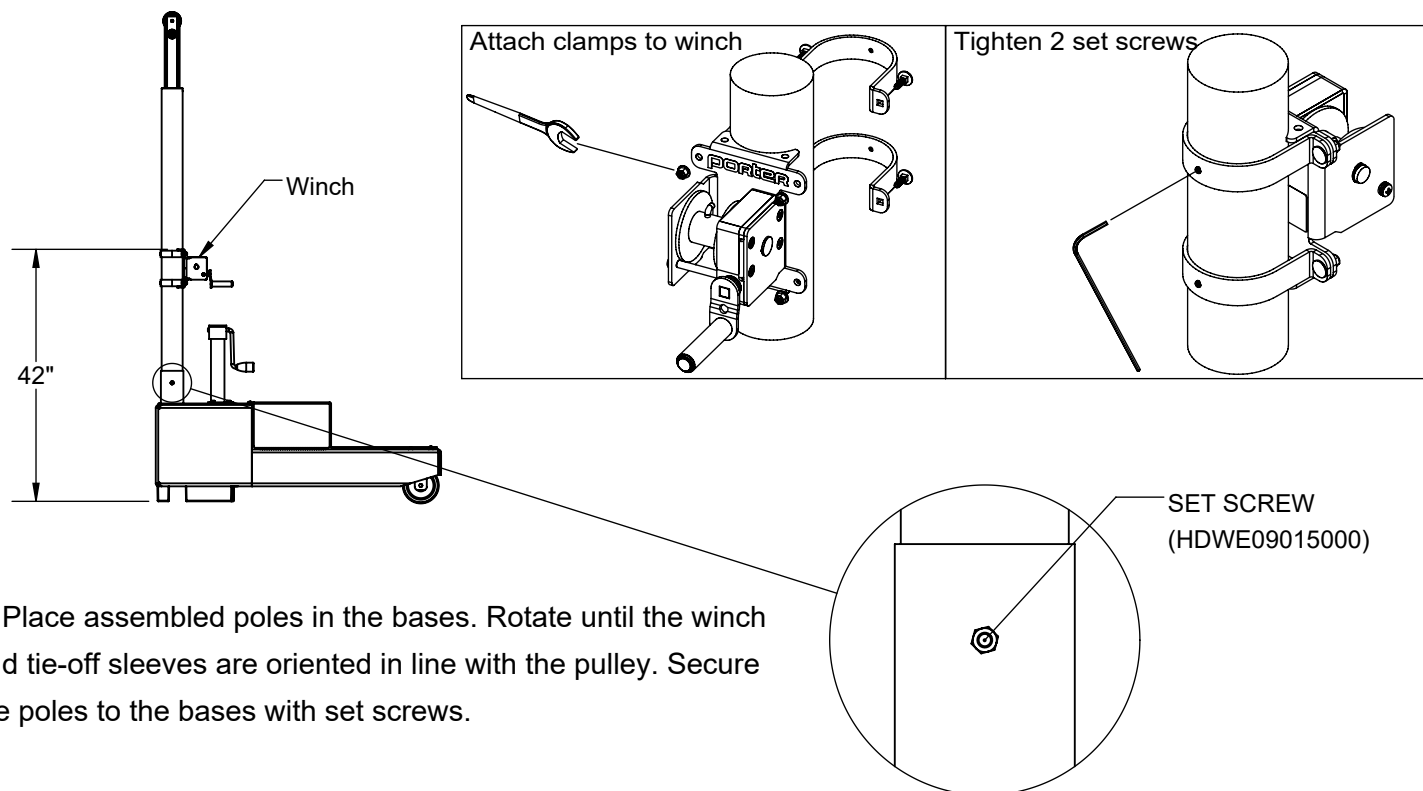
READ THESE ASSEMBLY AND OPERATING INSTRUCTIONS IN THEIR ENTIRETY, BEFORE ATTEMPTING TO UNPACK, OR OPERATE THESE PORTABLES, TO AVOID POSSIBLE INJURIES, OR DAMAGE TO THE EQUIPMENT.

1. Unpack and confirm all parts are included. The base will ship fully assembled. The poles and pads will need to be assembled.

2. Slide the tie-off sleeve (SLVE00038001) onto the pole from the bottom.
Secure the tie-off sleeve as shown 42" from the floor.



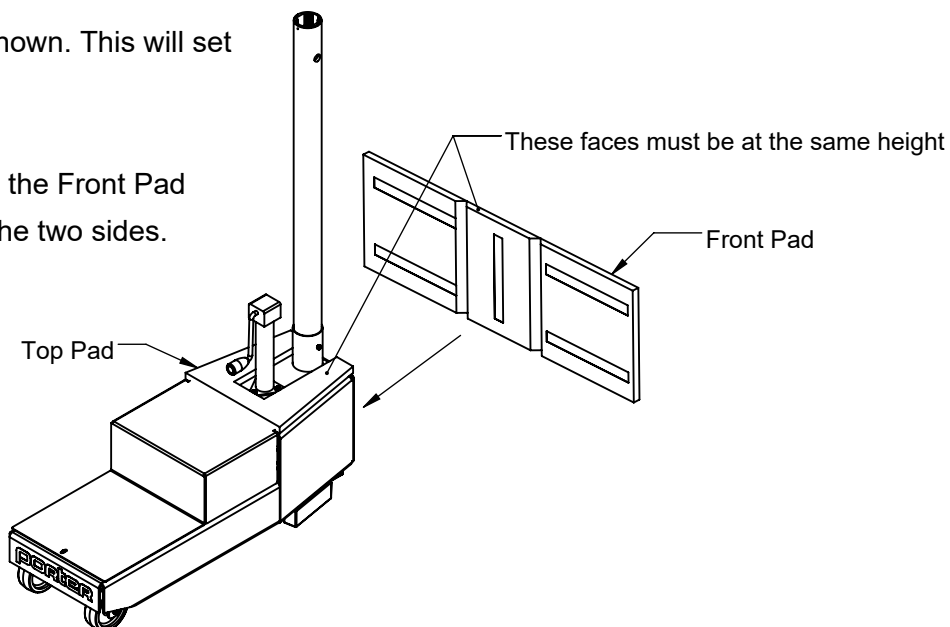
3. Attach the winch (WINH00113) 42" from the floor using the instructions provided in the winch box



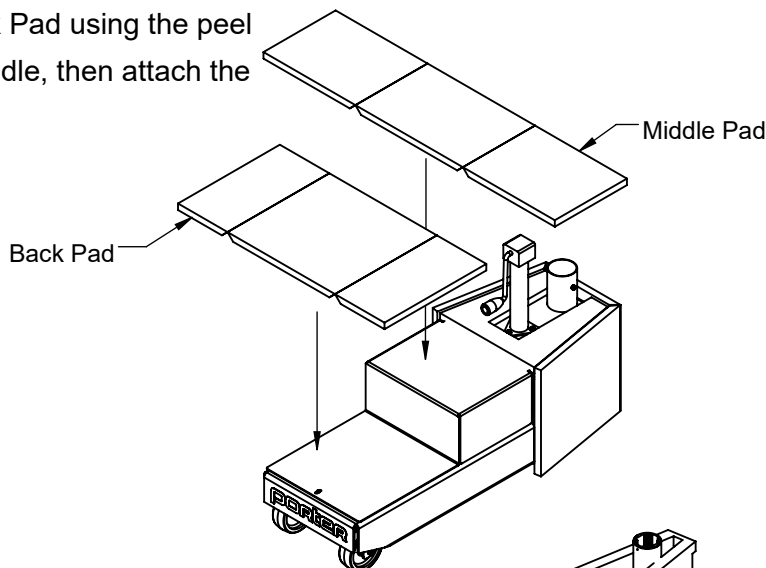
4. Place assembled poles in the bases. Rotate until the winch and tie-off sleeves are oriented in line with the pulley. Secure the poles to the bases with set screws.

5. Set the Top Pad onto the base as shown. This will set the height of the Front Pad.

Using the peel and stick Velcro, attach the Front Pad starting in the middle, then moving to the two sides.

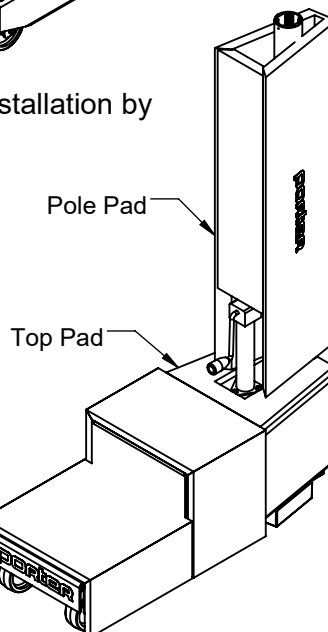


6. Attach the Middle Pad and Back Pad using the peel and stick Velcro. Start with the middle, then attach the two sides.

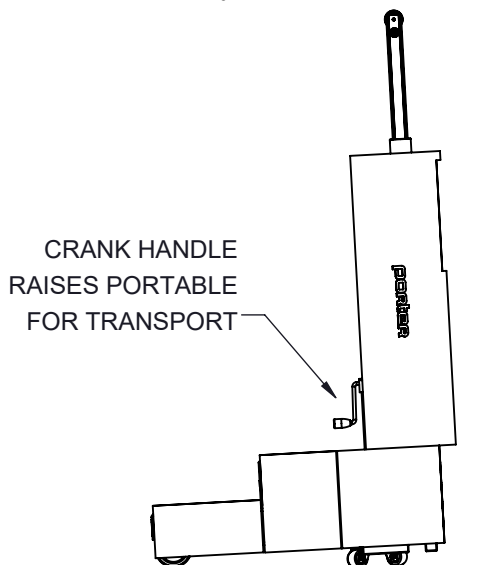


7. Attach the Top Pad with peel and stick Velcro. Finish pad installation by attaching the Pole Pad.

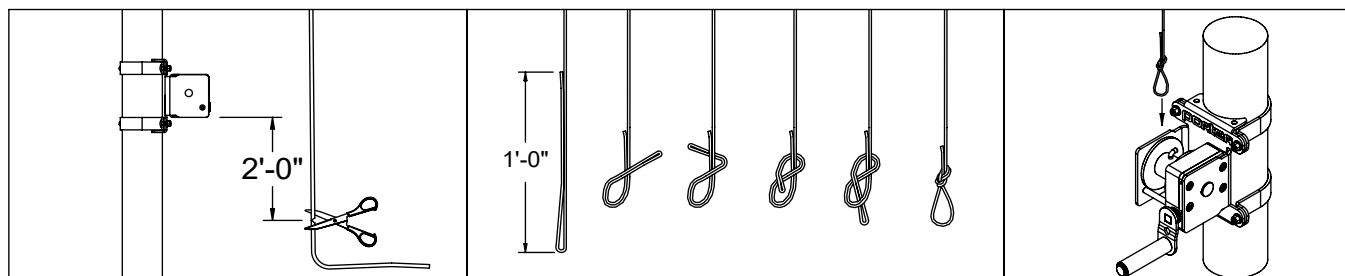
Confirm all pads are securely fastened.



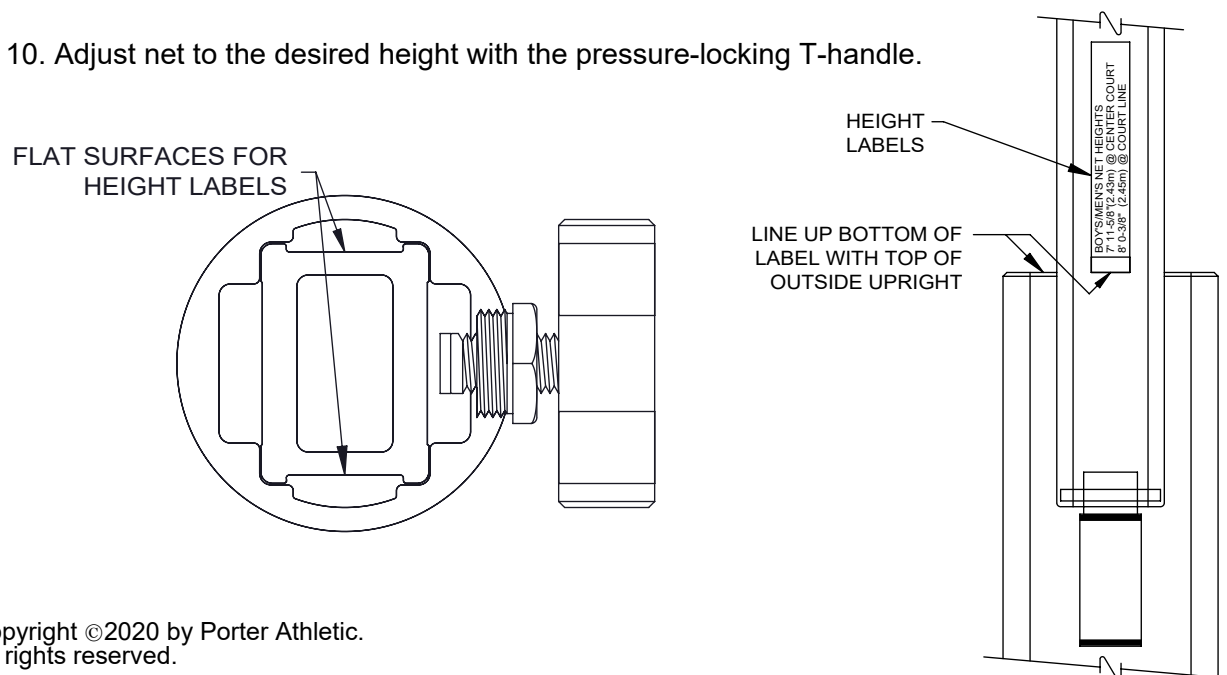
8. To move the portable from the play position to the transport position, use the crank assembly to raise it off the floor.



9. With the portables in place on the court, attach the net using the instructions provided in the net box.



10. Adjust net to the desired height with the pressure-locking T-handle.





www.porterathletic.com
888-277-7778

1935 - POWR-COURT VOLLEYBALL SYSTEM INST1935

CAUTION

- Uprights are equipped with a spring counterbalance mechanism. Release the Pressure-Lock Assembly ONLY WHEN UPRIGHT IS IN THE VERTICAL PLAY POSITION.
- Do not over tighten the volleyball net, as damage to uprights may result and void all written or implied warranties.
- Cable tension must be released before adjusting net height. Failure to do so may cause damage to the equipment, or cause personal injury.
- Never attempt to release the Pressure-Lock Assembly if the net is under tension.
- When raising or lowering the portables, stand to one side and keep all individuals clear. Keep hands and feet away from all pinch or crush points. Do not raise the unit more than a few inches off the ground for transport. Use extreme caution when moving.
- Never remove any ballast plates from the portables.

WARNING

- Serious injuries, including permanent paralysis, can occur in volleyball. Such can be caused by falls on the head, neck and other parts of the body, or by running into unpadded volleyball standards. Approved upright padding is mandatory. Keep the pole pad pushed back to cover the crank handle.
- While it cannot be eliminated, the risk of injuries can be greatly reduced by following proper safety guidelines and providing proper maintenance and safety inspections.
- A high degree of injury potential and severe liability problems exist when players or spectators are allowed to hang, sit or stand on the portables. **UNDER NO CIRCUMSTANCES SHOULD ANYONE STAND ON THE PORTABLES. ONLY STAND ON THE REFEREE STAND.**
- THE OPERATION AND TRANSPORT OF THESE PORTABLES MUST BE DONE BY AUTHORIZED ADULTS ONLY.
- IMPORTANT – UPON FINAL SET UP OF THIS UNIT, SHOW THE INDIVIDUALS WHO WILL OPERATE THIS UNIT HOW TO PROPERLY OPERATE AND MOVE THIS UNIT AND READ THE WARNING LABELS TO THEM EXPLAINING THE NECESSITY TO FOLLOW SAFE OPERATING PROCEDURES. THESE INSTRUCTIONS MUST BE GIVEN TO AN OFFICIAL IN CHARGE OF THE FACILITY FOR FUTURE REFERENCE.

GENERAL MAINTENANCE

- Inspect this equipment for wear, loose fittings, damage and proper stability before each use. Replace defective or worn parts immediately. If in doubt, do not use this equipment until repaired. Check pressure-lock assembly for wear and to ensure it is functioning properly.
- Lubricate threaded studs on pressure-lock assembly and tension winch periodically (at least twice a year) to minimize wear and to ensure proper operation.

STORAGE

- Under no circumstances should volleyball standards be stored in the transport position.
- PREVENT THE USE OF THE PORTABLES BY UNAUTHORIZED INDIVIDUALS WHILE IN STORAGE.

