

# 205A - RECTANGULAR GLASS BACKBOARD

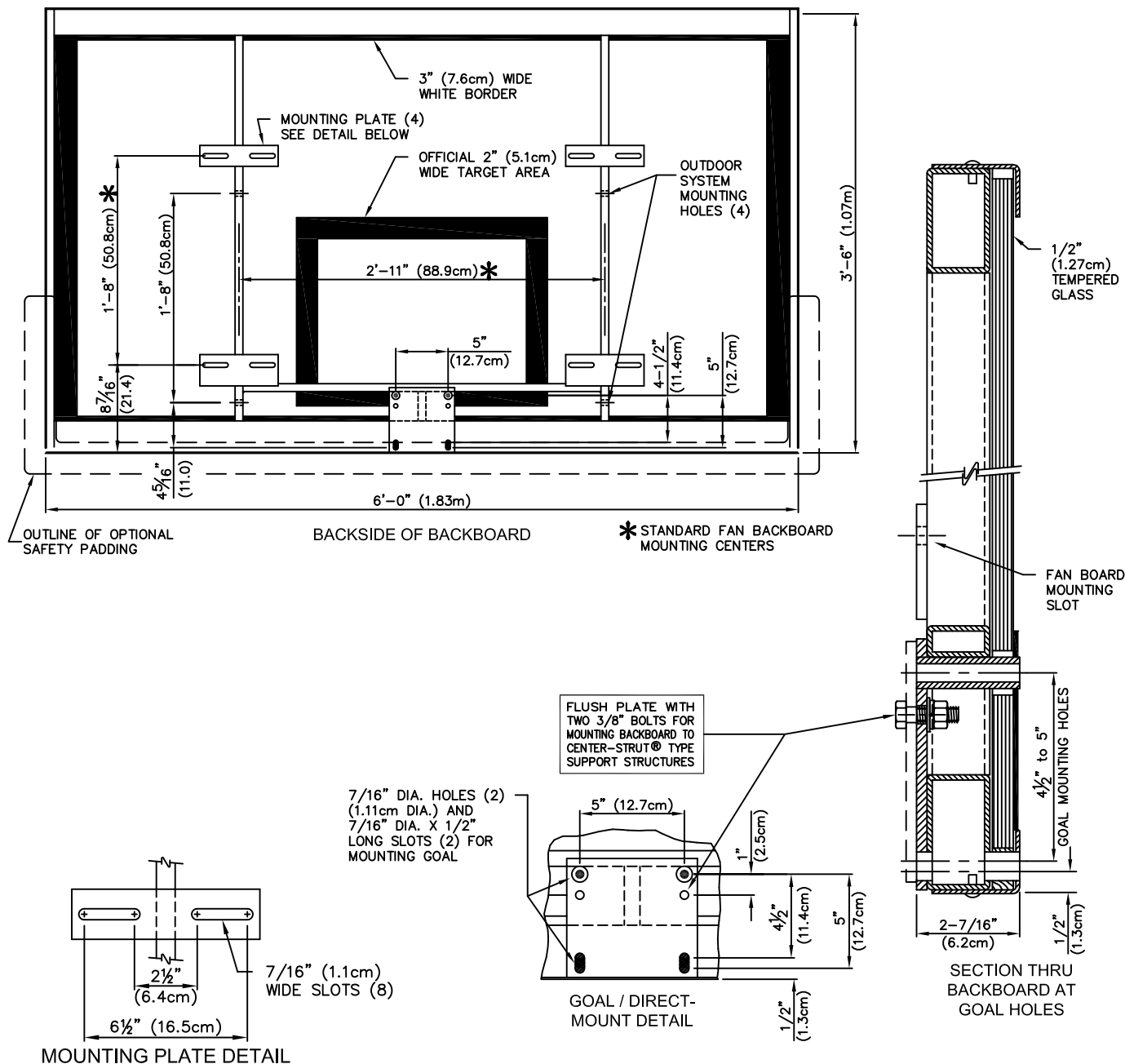
GLASS BACKBOARD WITH STEEL FRAME, FAN-MOUNT CENTERS UNIT  
MEETS ALL NCAA, NFHS, AND PROFESSIONAL REQUIREMENTS

**Porter**

WWW.PORTERATHLETIC.COM/FACILITY

BASKETBALL SPECIFICATION SHEET

B-205A



— 205A 72"x42" GLASS BOARD WITH STEEL FRAME, FAN-MOUNT CENTERS UNIT

**Porter**®

888-277-7778 PORTER@PORTERATHLETIC.COM  
© COPYRIGHT 2018 PORTER ATHLETIC - ALL RIGHTS RESERVED

PROJECT NUMBER

PROJECT NAME

3/14/2018

# 205A - RECTANGULAR GLASS BACKBOARD

GLASS BACKBOARD WITH STEEL FRAME, FAN-MOUNT CENTERS UNIT  
MEETS ALL NCAA, NFHS, AND PROFESSIONAL REQUIREMENTS

## SPECIFICATIONS

### PORTER No. 205A - 72"x42" GLASS BOARD WITH STEEL FRAME FAN-MOUNT CENTERS UNIT

Backboard shall be 3'-6" x 6'-0" to meet all NCAA, NFHS and professional requirements.

Backboard frame shall be of a welded, unitized construction fabricated from heavy wall rectangular steel tubing, aluminum-faced for professional appearance. Unitized frame shall include two vertical struts located at 35" centers incorporating key hole slot type mounting plates located on mounting centers to replace any standard fan shaped backboard without the use of additional hardware or support structure. Vertical struts shall also have mounting holes for attachment to outdoor support structures. Struts shall be reinforced by a horizontal rectangular steel tube with a unique spacer sleeve arrangement at the upper two goal mount hole locations to transmit undue loading during slam-dunks, etc. directly through the glass and into the rear frame. Entire unitized frame structure shall be powder coated in a durable weather-resistant finish before final assembly.

Unitized frame shall be designed to allow the bottom two goal mount holes to pass beneath the glass section to further alleviate stress on the glass. Rear backboard frame shall be finished in a durable neutral gray powder-coated finish.

Glass shall be provided in 1/2" thick, fully tempered (heat-treated) glass section with uniform load and impact strength. Official white border and target area is "fired in" permanently on front side of glass section so that it cannot wear away. Glass section shall be secured to unitized rear frame by means of an attractive, L-shaped brushed aluminum extrusion for optimum durability. Front perimeter frame shall be secured to unitized rear frame with structural truss head rivets. Glass section shall be fitted with shock absorbing neoprene material to cushion and protect the glass section. Goal mounting holes (2) and slots (2) to allow for 5" (horizontal) x 4-1/2" (vertical) mounting centers or 5" (horizontal) x 5" (vertical) mounting centers (see B-200 for goal options).

Backboard protected by a limited lifetime warranty.

Backboard recommended for either indoor or outdoor use.

#### OPTIONAL ITEMS TO SPECIFY

See Page No. B-326 for No. 00326-XXX Backboard Padding Kits.

See Page No. B-227 for No. 00227-000 Backboard Padding Kit.