

porter
WWW.PORTERATHLETIC.COM/FACILITY

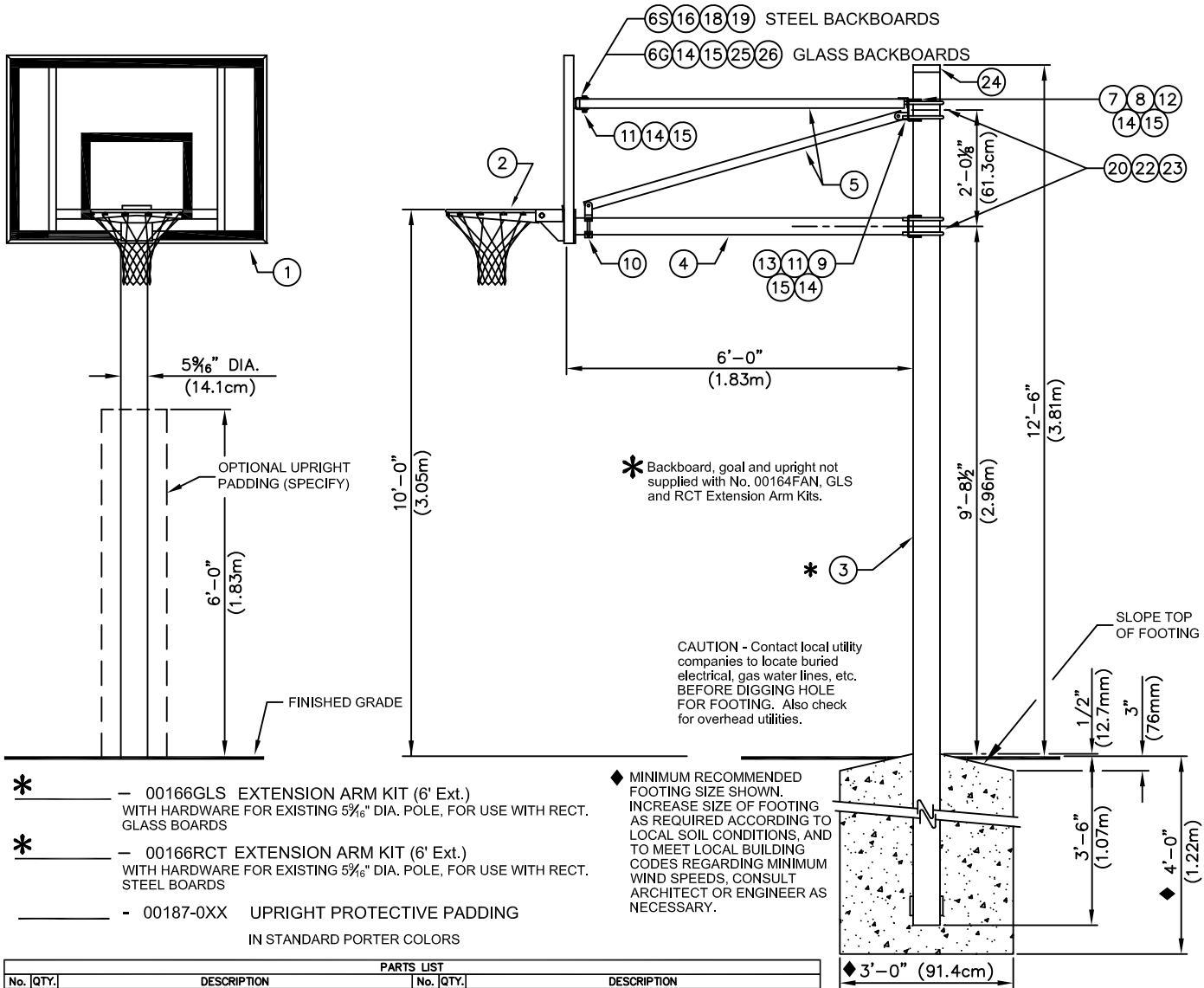
WWW.PORTERATHLETIC.COM/FACILITY

BASKETBALL SPECIFICATION SHEET

R-166-4

5/2/2024

6'-0" EXTENDED OUTDOOR SYSTEMS - FOR RECTANGULAR BACKBOARDS



* — 00166GLS EXTENSION ARM KIT (6' Ext.)
WITH HARDWARE FOR EXISTING 5 $\frac{1}{16}$ " DIA. POLE, FOR USE WITH RECT.
GLASS BOARDS

* — 00166RCT EXTENSION ARM KIT (6' Ext.)
WITH HARDWARE FOR EXISTING 5 $\frac{5}{16}$ " DIA. POLE, FOR USE WITH RECT.
STEEL BOARDS

- 00187-0XX UPRIGHT PROTECTIVE PADDING
IN STANDARD PORTER COLORS

◆ MINIMUM RECOMMENDED FOOTING SIZE SHOWN. INCREASE SIZE OF FOOTING AS REQUIRED ACCORDING TO LOCAL SOIL CONDITIONS, AND TO MEET LOCAL BUILDING CODES REGARDING MINIMUM WIND SPEEDS, CONSULT ARCHITECT OR ENGINEER AS NECESSARY.

**NOTE - SEE INDIVIDUAL DRAWINGS FOR
BACKBOARD, GOAL AND PADDING
SPECIFICATIONS**

5⁹/₁₆" DIA. SUPPORT POLE
STRAIGHT POLE STYLE

PARTS LIST					
No.	QTY.	DESCRIPTION	No.	QTY.	DESCRIPTION
1	1	BACKBOARD	14	8	HDWE 04003 OEO 1/2" LOCKWASHER
		SEE CHART BELOW	15	8	HDWE 03003 OEO 1/2" HEX NUT
2	1	GOAL	16	2	HDWE 01202 OEO 1/2" x 2 1/2" Lg. HEX HD CAP SCREW(Gr 5)
3	1	UPRT 00259 OGO GALVANIZED UPRIGHT: 5/8" Dia.	18	4	HDWE 04002 OEO 3/8" LOCKWASHER
4	1	EXTN 00051 O09 GALVANIZED EXTENSION ARM: 3/8" Dia.	19	2	HDWE 03002 OEO 3/8" HEX NUT
5	3	TUBR 00461 O09 GALVANIZED BRACE TUBE: 1 1/2" Dia.	20	4	UBOT 00012 OEO 5/8" U-BOLT: 5/8" Dia. Upright
6	2	BRCE 00078 BRACE CLAMP: RECT GLASS BOARDS	22	8	HDWE 04006 OEO 5/8" LOCKWASHER
6S	2	BRCE 00088 O09 BRACE CLAMP: RECT STEEL BOARDS	23	8	HDWE 03012 OEO 5/8" HEX NUT
7	1	ANGL 00119 O09 BRACE ANGLE	24	1	PCAP 00028 O02 PIPE CAP
8	1	CLMP 00044 OGO MAST CLAMP	25	4	HDWE 05017 1/2" FLAT WASHER SAE
9	1	HING 00009 O09 HINGE	26	2	HDWE 01164 OEO 1/2" x 2 1/2" HEX HD CAP SCREW (Gr 5)
10	1	XHNG 3010P O09 BRACE HANGER ASSEMBLY			
11	3	HDWE 01140 OEO 1/2" x 3" Lg. HEX HD CAP SCREW (Gr 5)			
12	2	HDWE 01166 OEO 1/2" x 2 1/2" Lg. HEX HD CAP SCREW(Gr 5)			
13	1	HDWE 02055 OEO 1/2" x 1 1/2" Lg. CARRIAGE BOLT (Gr 5)			

PART NUMBER:

— 166 —
(Galvanized Upright)

GOAL BOARD	00235000	00202H00	00251H00	236H00
207	52	53	54	55
205A	62	63	64	65

EXAMPLE; No. 16663 - INCLUDES 205A GLASS BACKBOARD AND
00202H00 DOUBLE-RIM GOAL

porter®

1-800-637-3090 PORTER@PORTERATHLETIC.COM
©COPYRIGHT 2024 PORTER ATHLETIC - ALL RIGHTS RESERVED

PROJECT NUMBER

PROJECT NAME

166-4 VERTICAL OUTDOOR BACKSTOP

6'-0" EXTENDED OUTDOOR SYSTEMS - FOR RECTANGULAR BACKBOARDS

SPECIFICATIONS

PORTER No. 166 __ (CXX) – 6' EXTENDED VERTICAL POST BACKSTOP

Upright support shall be 5-9/16" (14.13cm) O.D. heavy-wall galvanized steel pipe capped at top end. Welded anchor lugs shall be provided on lower end for securing into a concrete footing.

Backboard shall be supported 6'-0" (1.83m) in front of upright support by means of special horizontal support assemblies for ease of installing goal height at any location between 8'-0" (2.44m) and 10'-0" (3.05m).

Lower horizontal support assembly shall be fabricated from 3-1/2" O.D. (8.89cm) O.D. heavy-wall tubing equipped with a special steel, formed fitting for attachment to the upright support. Lower horizontal support assembly shall extend to a mounting plate directly behind the goal mounting holes to transfer all goal impact loading directly to the rear support structure to eliminate stress on the backboard. Lower horizontal support assembly shall be supported directly behind the goal mounting plate by means of a diagonally mounted heavy-wall 1-7/8" (4.76cm) O.D. steel tube extending to the upper end of the upright support.

Upper part of the backboards shall be further braced by dual, heavy-wall 1-7/8" (4.76cm) O.D. steel tubes extending outward from the upper end of the center upright support into special hinge fittings mounted on 2'-11" (88.9cm) centers on the backside of the backboards.

All metal parts shall be furnished in a galvanized or zinc Flo-Coat finish.

XX designates backboard and goal required – see chart on opposite side of this sheet for selection – specify. For specifications of backboards or goals, see specific page in backboard/goal section.

OPTIONAL ITEMS TO SPECIFY

See Page No. R-187 for specifications on Porter No. 001870XX Upright Padding (Each).

See Page No. B-324-72 for specifications on Porter No. 00324672 Backboard Padding (Each)

PORTER
WWW.PORTERATHLETIC.COM/FACILITY

BASKETBALL SPECIFICATION SHEET

R-166-4