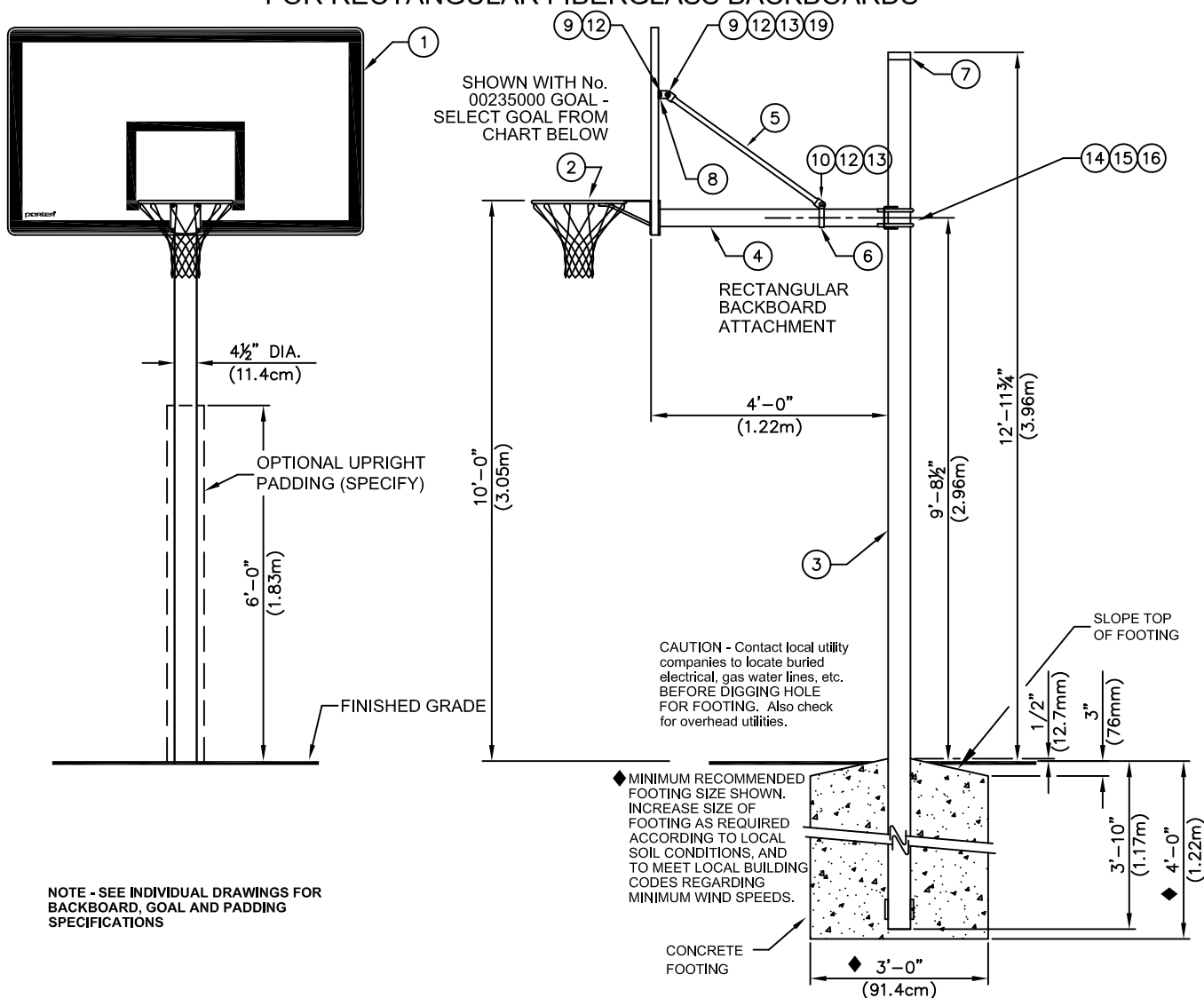


164-8 VERTICAL OUTDOOR BACKSTOP

4'-0" EXTENDED OUTDOOR SYSTEMS FOR RECTANGULAR FIBERGLASS BACKBOARDS



PARTS LIST					
No.	QTY.	DESCRIPTION	No.	QTY.	DESCRIPTION
1	1	216 BACKBOARD	9	6	HDWE 01124 OEO 3/8" x 1" HEX HD CAP SCREW(Gr. 5)
2	1	GOAL - SEE CHART BELOW	10	1	HDWE 01125 OEO 3/8" x 1 1/4" HEX HD CAP SCREW(Gr. 5)
3	1	UPRT 00258 OGO UPRIGHT: 4 1/2" Dia. GALVANIZED	12	7	HDWE 04002 OEO 3/8" LOCKWASHER
4	1	EXTN 00050 009 4" EXTENSION ARM: 3 1/2" Dia. FLO-COAT	13	3	HDWE 03002 OEO 3/8" HEX NUT
5	2	SWAY 00175 OGO BRACE TUBE: 1" Dia. ZINC FC	14	2	UBOT 00011 OEO 5/8" U-BOLT: 4 1/2" Dia. Upright
6	1	CLMP 00083 OGO CLAMPING BAND 1" X 3 1/2" ID GALV	15	4	HDWE 04006 OEO 5/8" LOCKWASHER
7	1	PCAP 00027 002 PIPE CAP	16	4	HDWE 03012 OEO 5/8" HEX NUT
8	2	BRCE 00021 OGO BRACE CLAMP AT BACKBOARD	19	2	HDWE 05004 OEO 3/8" FLAT WASHER

PART NUMBER:

GOAL	216	820	830	840	850
BOARD	216	820	830	840	850

4 1/2" DIA. SUPPORT POLE
STRAIGHT POLE STYLE

Upright can be provided in Porter's standard powder-coat colors.
Refer to Porter's power-coat color chart.

00069-0XX UPRIGHT PROTECTIVE PADDING IN STANDARD PORTER COLORS

EXAMPLE: No. 00164830 - INCLUDES 216 BACKBOARD AND 00202H00 DOUBLE RIM GOAL

Porter[®]

888-277-7778 PORTER@PORTERATHLETIC.COM
© COPYRIGHT 2012 PORTER ATHLETIC - ALL RIGHTS RESERVED

PROJECT NUMBER

PROJECT NAME

Porter

WWW.PORTERATHLETIC.COM/FACILITY

BASKETBALL SPECIFICATION SHEET

R-164-8

7/23/2015

164-8 VERTICAL OUTDOOR BACKSTOP

4'-0" EXTENDED OUTDOOR SYSTEMS
FOR RECTANGULAR FIBERGLASS BACKBOARDS

SPECIFICATIONS

PORTER No. 001648X0 – 4' EXTENDED VERTICAL POST BACKSTOP

Upright support shall be 4-1/2" (11.43cm) O.D. schedule 40 (0.237" wall, 6.02mm), galvanized steel pipe capped at top end. Welded anchor lugs shall be provided on lower end for securing into a concrete footing.

Backboard shall be supported 4'-0" (1.22m) in front of upright support by means of a special horizontal support assembly for ease of installing goal height at any location between 8'-0" (2.44m) and 10'-0" (3.05m).

Horizontal support assembly shall be fabricated from 3-1/2" O.D. (8.89cm) O.D. 8ga. steel tubing equipped with a special steel, die formed fitting for attachment to the upright support. Support assembly shall extend to a mounting plate directly behind the goal mounting holes to transfer all goal impact loading directly to the rear support structure to eliminate stress on the backboard.

Upper part of rectangular backboards shall be braced by dual, heavy-wall 1" (2.54cm) O.D. steel tubular sway braces extending up and outward from the horizontal support and fastened to vertical frame members on 2'-11" (88.0cm) centers on the backside of the backboard.

All metal parts shall be furnished in a zinc Flo-Coat finish.

X designates goal required – see chart on opposite side of this sheet for selection – specify. For specifications of backboards or goals, see specific page in backboard/goal section.

Upright, extension arm and sway brace tubes can be provided in Porter's standard powder-coat colors. Refer to Porter's powder-coat color chart.

OPTIONAL ITEMS TO SPECIFY

See Page No. B-324-72 for specifications on Porter No. 00324672 Backboard Padding (Each) (rectangular backboards only).

See Page No. R-69 for specifications on Porter No. 000690XX Upright Padding (Each).

PORTER
WWW.PORTERATHLETIC.COM/FACILITY

BASKETBALL SPECIFICATION SHEET

R-164-8