



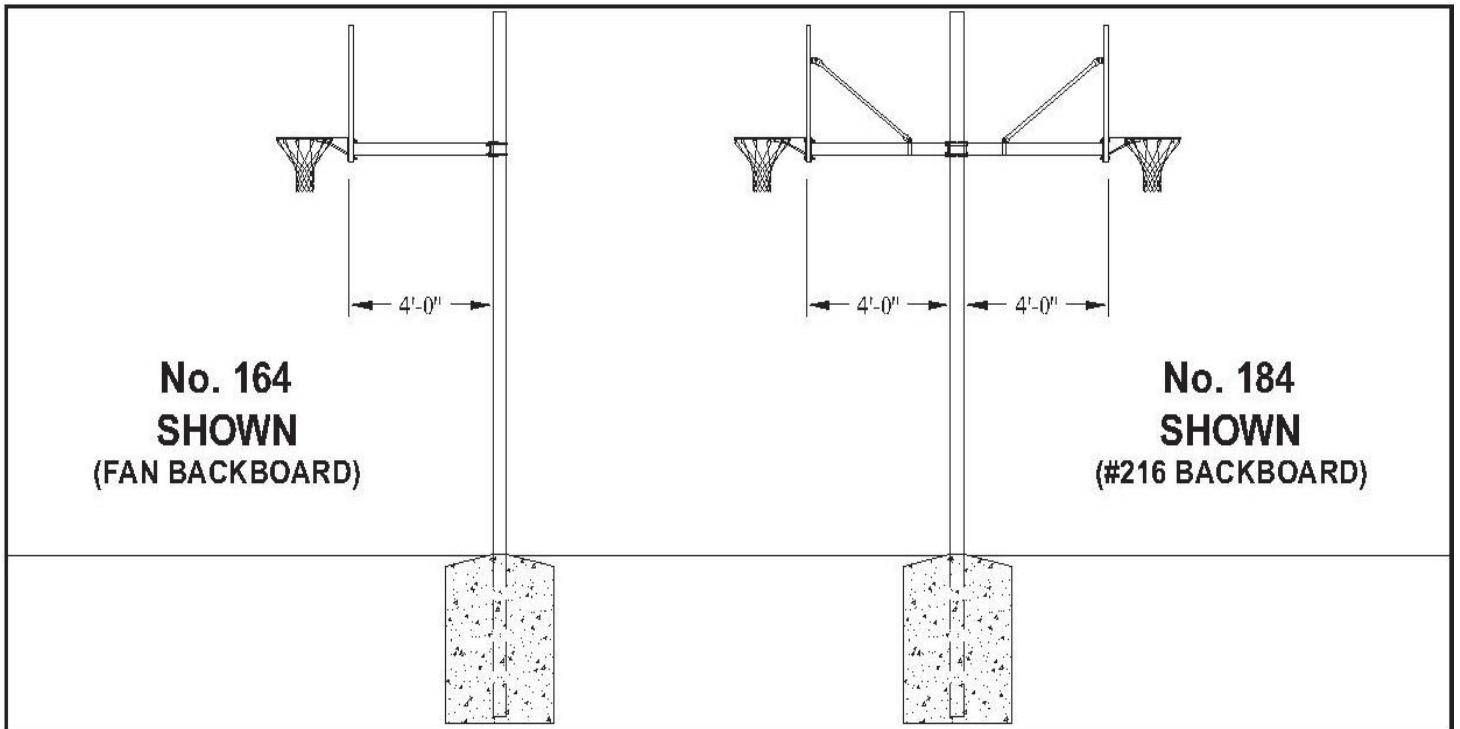
INSTALLATION INSTRUCTIONS

OUTDOOR BACKSTOP WITH SINGLE 4'-0" EXTENSION

No. 00164- _ _

OUTDOOR BACKSTOP WITH DOUBLE 4'-0" EXTENSION

No. 00184- _ _



WARNING

READ ALL INSTRUCTIONS THOROUGHLY BEFORE ATTEMPTING TO INSTALL THIS EQUIPMENT. INSTALLATION / ASSEMBLY OF THIS EQUIPMENT MUST BE DONE **ONLY BY ADULTS**, WHO ARE PHYSICALLY CAPABLE OF DOING SO.

INSTALLER NOTE:

Upon completion of the installation/assembly of this backstop, make sure this instruction manual is in the possession of the owner or facility manager, to save for future reference, and to order replacement parts.



WARNING

READ ALL WARNINGS THOROUGHLY BEFORE USING THIS EQUIPMENT.

FAILURE TO COMPLY WITH THE FOLLOWING INSTRUCTIONS AND WARNINGS MAY RESULT IN SERIOUS INJURIES AND/OR PROPERTY DAMAGE.

- DO NOT HANG on the rim or any part of system, including backboard, support braces or net.
- During play, especially when performing dunk-type activities, keep player's face away from the backboard, rim and net. Serious injuries could occur if teeth/face come in contact with backboard, rim or net. All players must wear a mouth guard when performing dunk-type activities.
- Do not slide, climb or play on pole.
- During play, do not wear jewelry (rings, watches, necklaces, etc.). These objects may entangle in net.
- Keep organic material away from base of post. Grass, litter, etc. could cause corrosion and/or deterioration.
- Check post system for signs of corrosion (rust, pitting, chipping, etc.) and repaint with exterior enamel paint. If rust has penetrated through the steel anywhere, replace post immediately.
- Check system before each use for loose hardware, excessive wear, and signs of corrosion, and repair before use.
- Check system before each use for instability.
- Never allow play on damaged equipment.

THE OWNER OF THIS EQUIPMENT IS RESPONSIBLE TO ENSURE THAT ALL INDIVIDUALS FOLLOW THESE SAFETY AND OPERATING INSTRUCTIONS TO AVOID INJURIES OR PROPERTY DAMAGE. PROPER USE AND SUPERVISION OF THIS EQUIPMENT IS ESSENTIAL TO HELP REDUCE THE POSSIBILITY OF ACCIDENTS OR INJURIES.



NOTE

These instructions detail installing a No. 164 or 184 Backstop permanently in a concrete footing. If using a No. 164 or 184 Backstop with an outdoor ground sleeve, consult factory for information on special post. ***DO NOT PROCEED.***

PARTS LIST

PARTS LIST – No. 164 BACKSTOP WITH 4-1/2" DIAMETER POST AND SINGLE 4'-0" EXTENSION

No. 164 BACKSTOP With FAN BACKBOARD

No. 164 BACKSTOP With RECTANGULAR BACKBOARD

Item No.	Qty.	Part Number	Description	Item No.	Qty.	Part Number	Description
1	1		Fan Backboard	1	1		Rectangular Backboard
2	1		Goal	2	1		Goal
3	1	UPRT 00258 0G0	Post	3	1	UPRT 00258 0G0	Post
4	1	EXTN 00050 009	Extension Arm	4	1	EXTN 00050 009	Extension Arm
7	1	PCAP 00027 002	Pipe Cap	5	2	SWAY 00175 0G0	Brace Tube
14	2	UBOT 00011 0E0	5/8" U-Bolt (For 4-1/2" Dia. Pole)	6	1	CLMP 000830G0	Clamping Band
15	4	HDWE 04006 0E0	5/8" Lock washer	7	1	PCAP 00027002	Pipe Cap
16	4	HDWE 03012 0E0	5/8" Hex Nut	8F	2	BRCE 000210G0	Brace Clamp (#216 only)
				9F	6	HDWE 01124 0E0	3/8" x 1" Lg. Hex Head Cap Screw ♦
				10	1	HDWE 01125 0E0	3/8" x 1-1/4" Lg. Hex Head Cap Screw ♦
				11F	2	HDWE 012070E0	3/8" x 2-1/4" Lg. Hex Head Cap Screw ♦
				12	7	HDWE 04002 0E0	3/8" Lock washer
				13	7	HDWE 03002 0E0	3/8" Hex Nut
				14	2	UBOT 00011 0E0	5/8" U-Bolt (For 4-1/2" Dia. Pole)
				15	4	HDWE 04006 0E0	5/8" Lock washer
				16	4	HDWE 03012 0E0	5/8" Hex Nut
				18G	2	HDWE 012060E0	3/8" x 2" Hex Head Cap Screw
				19	4	HDWE 050040E0	3/8" Flat Washer
							F – Rect. Fiberglass Backboard Only G – Rect. Glass Backboard Only
							♦ NOTE – Grade 5 Hardware

PARTS LIST – No. 184 BACKSTOP WITH 4-1/2" DIAMETER POST AND DOUBLE 4'-0" EXTENSION

No. 184 BACKSTOP With FAN BACKBOARD

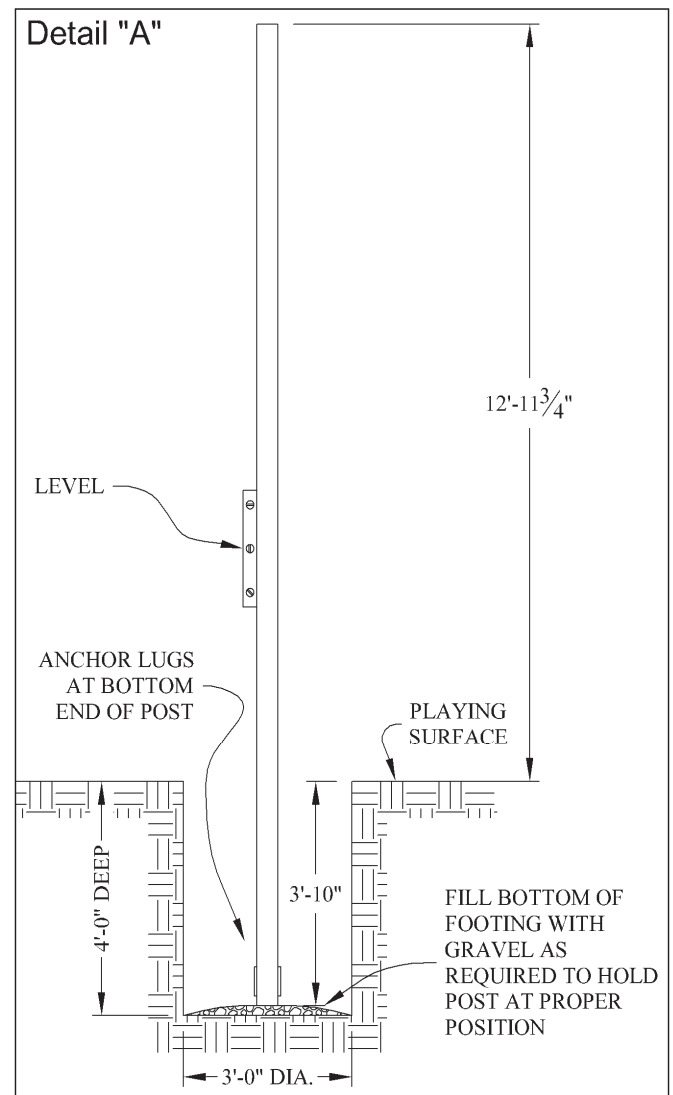
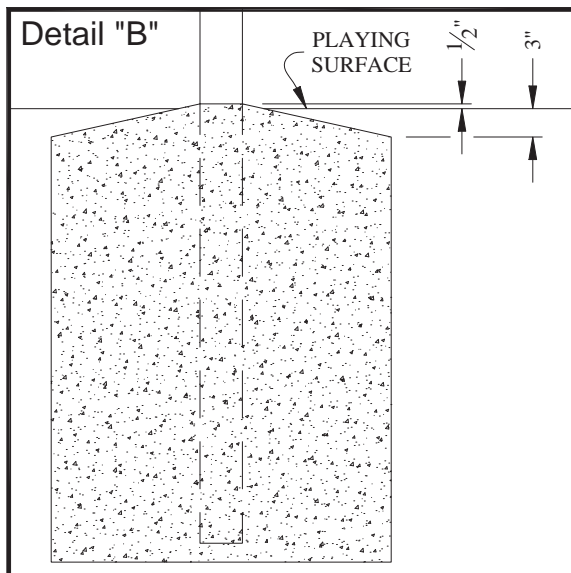
No. 184 BACKSTOP With RECTANGULAR BACKBOARD

Item No.	Qty.	Part Number	Description	Item No.	Qty.	Part Number	Description
1	2		Fan Backboard	1	2		Rectangular Backboard
2	2		Goal	2	2		Goal
3	1	UPRT 00258 0G0	Post	3	1	UPRT 00258 0G0	Post
4	2	EXTN 00050 009	Extension Arm	4	2	EXTN 00050 009	Extension Arm
7	2	PCAP 00027 002	Pipe Cap	5	4	SWAY 00175 0G0	Brace Tube
15	4	HDWE 04006 0E0	5/8" Lock washer	6	2	CLMP 000830G0	Clamping Band
16	4	HDWE 03012 0E0	5/8" Hex Nut	7	1	PCAP 00027002	Pipe Cap
17	4	HDWE 01276 0E0	5/8" x 7-1/2" Lg. Hex Head Cap Screw	8F	4	BRCE 000210G0	Brace Clamp (#216 only)
			Grade 8	9F	12	HDWE 01124 0E0	3/8" x 1" Lg. Hex Head Cap Screw ♦
				10	2	HDWE 01125 0E0	3/8" x 1-1/4" Lg. Hex Head Cap Screw ♦
				11F	4	HDWE 012070E0	3/8" x 2-1/4" Lg. Hex Head Cap Screw ♦
				12	12	HDWE 04002 0E0	3/8" Lock washer
				13	4	HDWE 03002 0E0	3/8" Hex Nut
				15	4	HDWE 04006 0E0	5/8" Lock washer
				16	4	HDWE 03012 0E0	5/8" Hex Nut
				17	4	HDWE 01276 0E0	5/8" x 7-1/2" Lg. Hex Head Cap Screw
							Grade 8
				18G	4	HDWE050040E0	3/8" x 2" Hex Head Cap Screw
				19	8	HDWE 050040E0	3/8" Flat Washer
							F – Rect. Fiberglass Backboard Only G – Rect. Glass Backboard Only
							♦ NOTE – Grade 5 Hardware

1. Check all items against Parts List on Page 3 to ensure all parts and hardware are available to complete the installation.

INSTALL POST

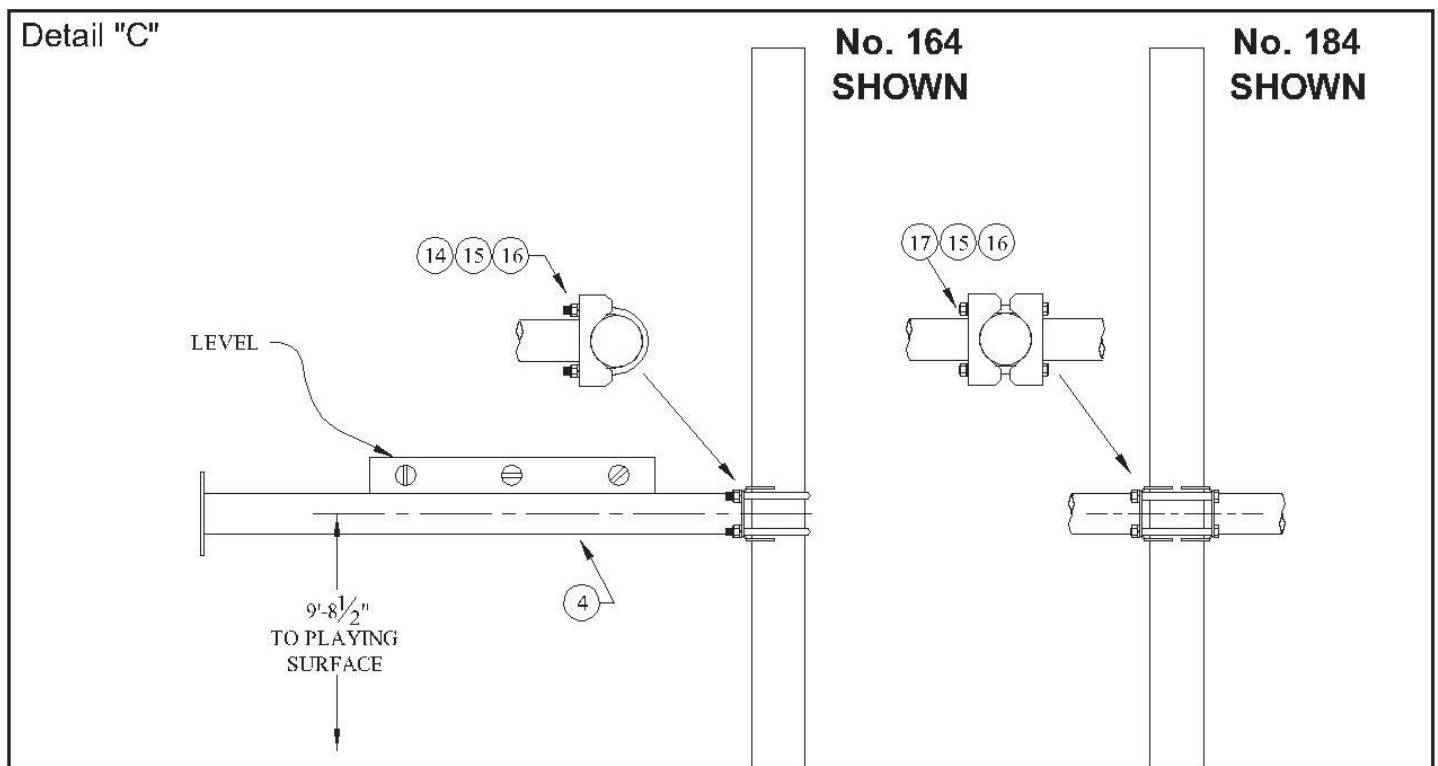
2. Locate center position of post. **CAUTION** – Contact your local utility companies to locate buried electrical, gas, water lines, etc. BEFORE DIGGING HOLE FOR FOOTING. Also, check for overhead utilities.
3. Dig a footing 3'-0" in diameter by 4'-0" in depth, centered on the final location of the post. NOTE – Footing size may have to be increased depending on soil conditions. See Detail "A".
4. Using at least two adults, tip the bottom end of the post (with anchor lugs) into the footing hole, and raise it to the vertical position. See Detail "A". Brace the post with 2x4's as required, to ensure the post remains plumb and at the proper height above the playing surface.
5. Center the post in the hole, and brace as required to support it while the concrete sets up. NOTE – The top of the post will be located 12'-11³/₄" above the playing surface. See Detail "A".
6. Pour concrete into the hole (approximately 1.1 cubic yards), tamping as it is poured to eliminate air pockets. Slope top of footing upward toward post so that top of footing at post is approximately 1/2" above playing surface. Slope footing away from post, to a point that is 3" below the playing surface. See Detail "B". This will ensure proper drainage, reducing the possibility of corrosion of the steel post. Do not cover the footing at the post with dirt, sod or anything else that could hold moisture.



7. While concrete is still wet, use a level on two sides of the post to ensure it is plumb.
8. Allow concrete to cure at least 24 hours before proceeding.

ASSEMBLE EXTENSION ARM AND BRACES TO POST

9. This step requires three adults. Assemble extension arm(s) to post, using hardware as indicated below. The centerline of the extension arm(s) must be located 9' 8-1/2" above playing surface. This will locate extension arm at the proper height, ensuring a 10'-0" goal height after assembly is completed. * See Detail "C".
- **No. 164 With Single Extension Arm** – Assemble extension arm to post using two u-bolts (14), 5/8" lock washers (15) and 5/8" hex nuts (16).
 - **No. 184 With Double Extension Arms** – Assemble extension arms to post using four 5/8" x 7-1/2" lg. hex head cap screws (17), 5/8" lock washers (15) and 5/8" hex nuts (16).
- * A goal height lower than 10'-0" can be obtained by mounting the extension arm(s) at a lower height on the post (by decreasing the 9' 8-1/2" dimension).

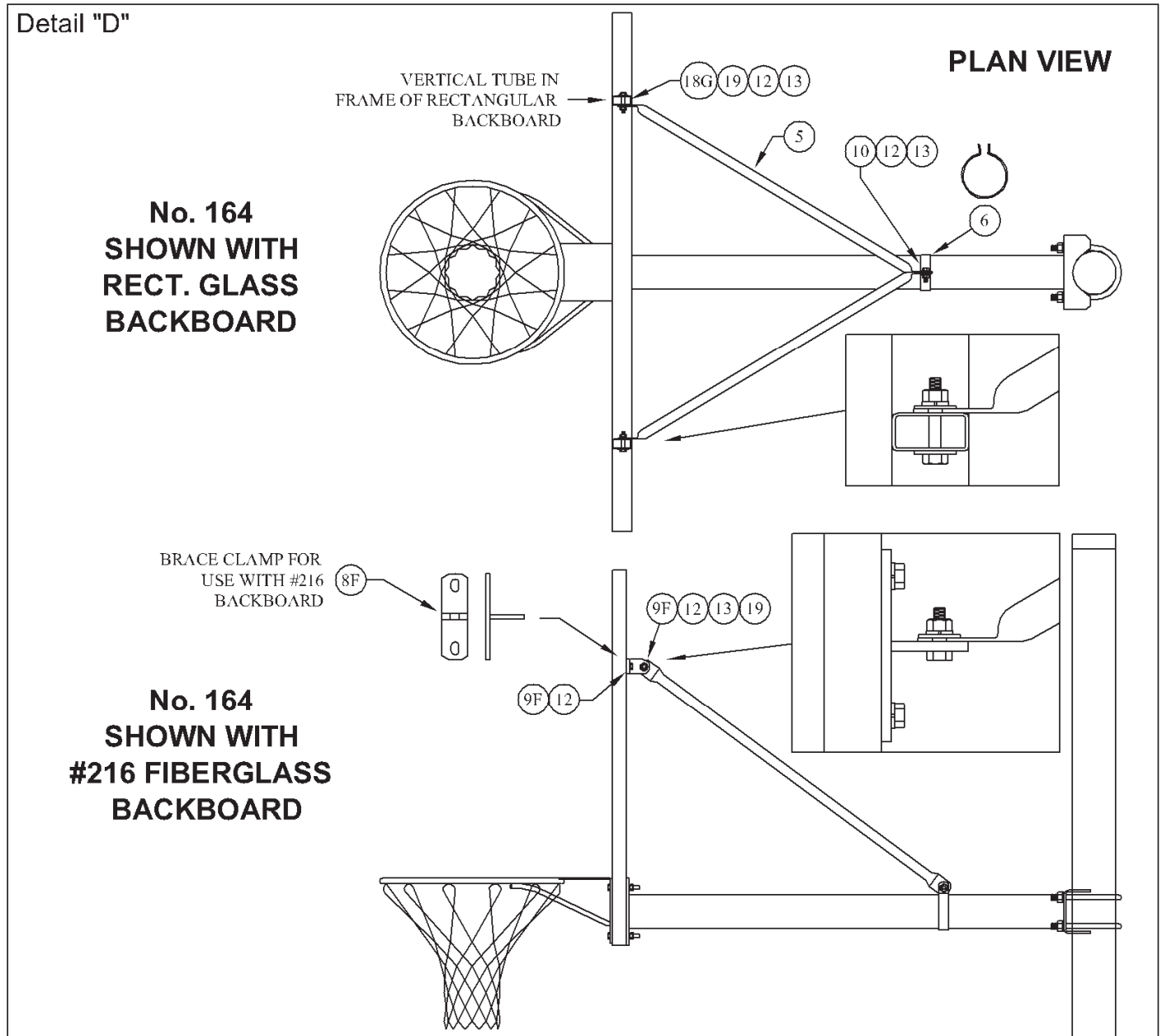


ASSEMBLE BACKBOARD AND GOAL

10. Assemble backboard and goal to extension arm using the four bolts furnished with the goal. Lay a level horizontally across the top of the backboard and across the goal. Rotate backboard and goal as required until both are level. When level, tighten hardware securely. Refer to specific instructions provided with each model of backboard and goal.

ASSEMBLE BACKBOARD BRACE TUBES (NOT REQUIRED FOR FAN BACKBOARDS)

11. If installing a #216 Rectangular Fiberglass Backboard, install two brace clamps (6) as shown in the bottom half of Detail "D". Use 3/8" x 1" lg. hex head cap screws (10) and 3/8" lock washers (12) to secure the brace clamps to the back of the backboard.
12. Open up clamping band (6) and install around the offset tube as shown in Detail "D". Long nose vice-grip pliers will help to hold clamp closed during assembly.



13. Loosely assemble front end of brace tubes (5) to backboard.

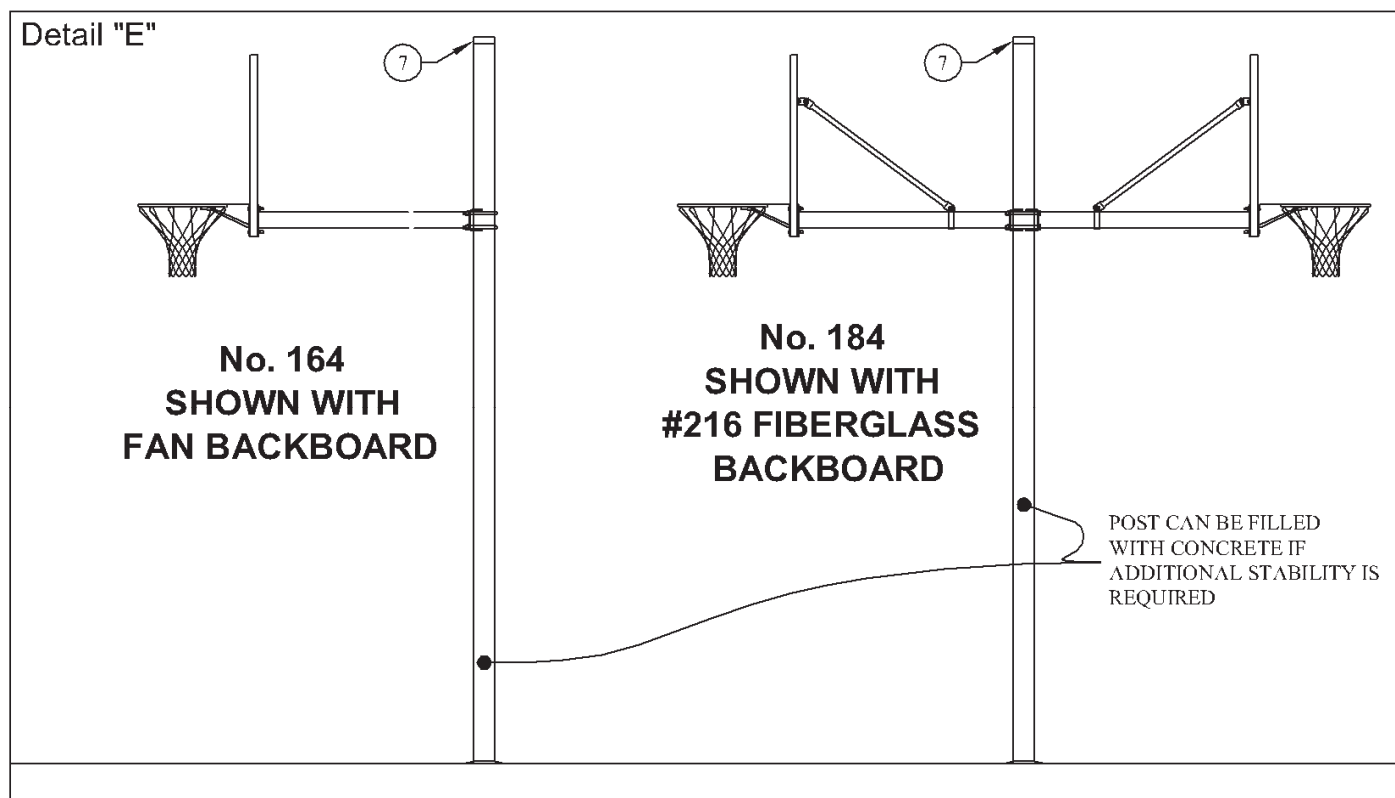
Rect. Glass Backboards – 3/8" x 2" hex head cap screws (18G), 3/8" flat washers (19), 3/8" lock washers (12) and 3/8" hex nuts (13).

Rect. Fiberglass Backboards – Use 3/8" x 1" hex head cap screws (9F), 3/8" flat washers (19), 3/8" lock washers (12) and 3/8" hex nuts (13).

14. Loosely assembly back end of brace tubes to clamping bands (6), using 3/8" x 1-1/4" lg. hex head cap screw (11), 3/8" lock washer (12) and 3/8" hex nut (13), See Detail "D". Brace tube ends fit between the clamping band ends. Use long nose vice-grip pliers to hold clamping band ends together when installing cap screw.

15. Tighten all hardware from Steps No. 13 and 14.

16. **IMPORTANT** – Install pipe cap (7) on top of post. Failure to do so will allow water inside post, causing corrosion of the post, and structural damage to the post during freezing conditions. See Detail "E".



17. **NOTE** – If additional stability is required from backstop, the post can be filled with concrete. **NOTE** – Be sure to reinstall the pipe cap after concrete is poured.

18. Installation/assembly of backstop is now complete. Install optional post and/or backboard padding as required.

porter
www.porterathletic.com
(888) 277-7778

WARNING: This product can expose you to Titanium Dioxide, which is known to the State of California to cause cancer. For more information go to www.p65warnings.ca.gov.

SAVE THESE INSTRUCTIONS FOR FUTURE USE