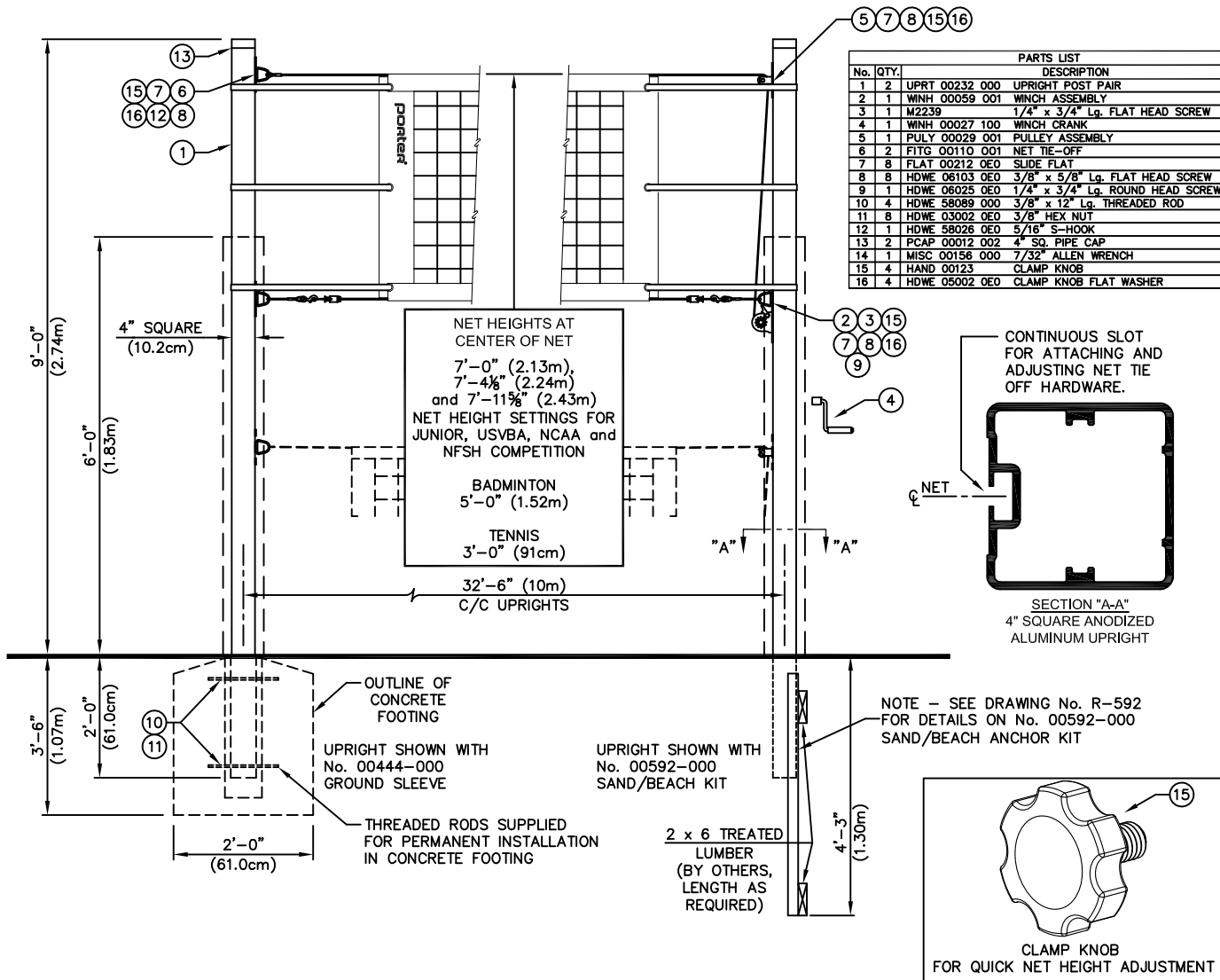


# 591 - OUTDOOR VOLLEYBALL STANDARDS

## SQUARE ALUMINUM VOLLEYBALL STANDARDS



591 OUTDOOR ALUMINUM VOLLEYBALL STANDARDS (PAIR)

See R-592 592 UPRIGHT/BASE EXTENSIONS FOR SAND / BEACH USE (PAIR)

5930XX UPRIGHT PROTECTIVE PADS (PAIR) - SPECIFY COLOR

See R-444 00444-000 4" SQUARE GROUND SLEEVE (EA); FOR USE IN DIRT

00444-040 4" SQUARE GROUND SLEEVE (EA); FOR USE IN SAND

See V-2256 2256 YELLOW OUTDOOR VOLLEYBALL NET (32' x 39")

**porter**

888-277-7778 PORTER@PORTERATHLETIC.COM  
 © COPYRIGHT 2020 PORTER ATHLETIC - ALL RIGHTS RESERVED

PROJECT NUMBER

PROJECT NAME

**porter**

WWW.PORTERATHLETIC.COM/FACILITY

VOLLEYBALL SPECIFICATION SHEET

R-591

4/29/2020

# 591 - OUTDOOR VOLLEYBALL STANDARDS

## SQUARE ALUMINUM VOLLEYBALL STANDARDS

### SPECIFICATIONS

#### PORTER No. 591 – 4" SQUARE ALUMINUM OUTDOOR VOLLEYBALL SYSTEM (PAIR)

Posts shall be provided in a high strength extruded aluminum alloy (6063T6) and finished in a durable clean anodized finish for outdoor use. One pair of posts shall consist of one reel post and one tie-off post. Posts shall be 4" (10.16cm) square x 11'-0" (3.4m) in length to extend 2'-0" (60.9cm) into concrete footings or into optional No. 00592-000 upright base extensions when used as beach or sand units. Upper end of posts shall be provided with an external cap.

Extruded aluminum post sections shall be provided with an integral channel/track system to accept net attachment hardware and allow for infinite net height adjustments, for all age group competition settings. Net height may also be set at heights for badminton (5'-0" – 1.53m) on tennis (3'-0" – .9m) or any other desired net height requirement.

Reel post shall be provided with a heavy-duty type net tensioning reel with a removable type handle. Post shall also be provided with an adjustable upper pulley assembly. Clamp knobs at each fitting allow for quick adjustments.

Tie-off post shall be provided with two (2) adjustable d-ring net tie off assemblies which attach to the post identical to the reel post hardware.

#### OPTIONAL PORTER No. 5930XX UPRIGHT PROTECTIVE PADS (PAIR)

Pads shall be designed to provide additional player safety. Pad shall be constructed of a rugged tear proof polyester reinforced vinyl material (15 oz. per sq. yd.) with a resilient, 1-1/2" thick foam filler.

Pads shall be 6'-0" (1.83m) in height by 1'-6" (45.7cm) in width with grommets spaced at approximately 5-3/8" (13.3cm) centers for lacing to 4" (10.16cm) square uprights with weather resistant cords provided.

### OPTIONAL ITEMS TO SPECIFY

- See Page No. R-592 for specifications on Porter No. 592 Upright/Base extensions  
(When volleyball system is to be used on a beach or sand court when concrete footings are undesirable)
- See Page No. R-444 for specifications on Porter No. 00444-000 Outdoor Ground Sleeve  
(When removal of volleyball system is required)
- See Page No. 00444040 for specifications on Porter No. 00444-040 Sand VB Outdoor Ground Sleeve  
(When removal of sand volleyball system is required)