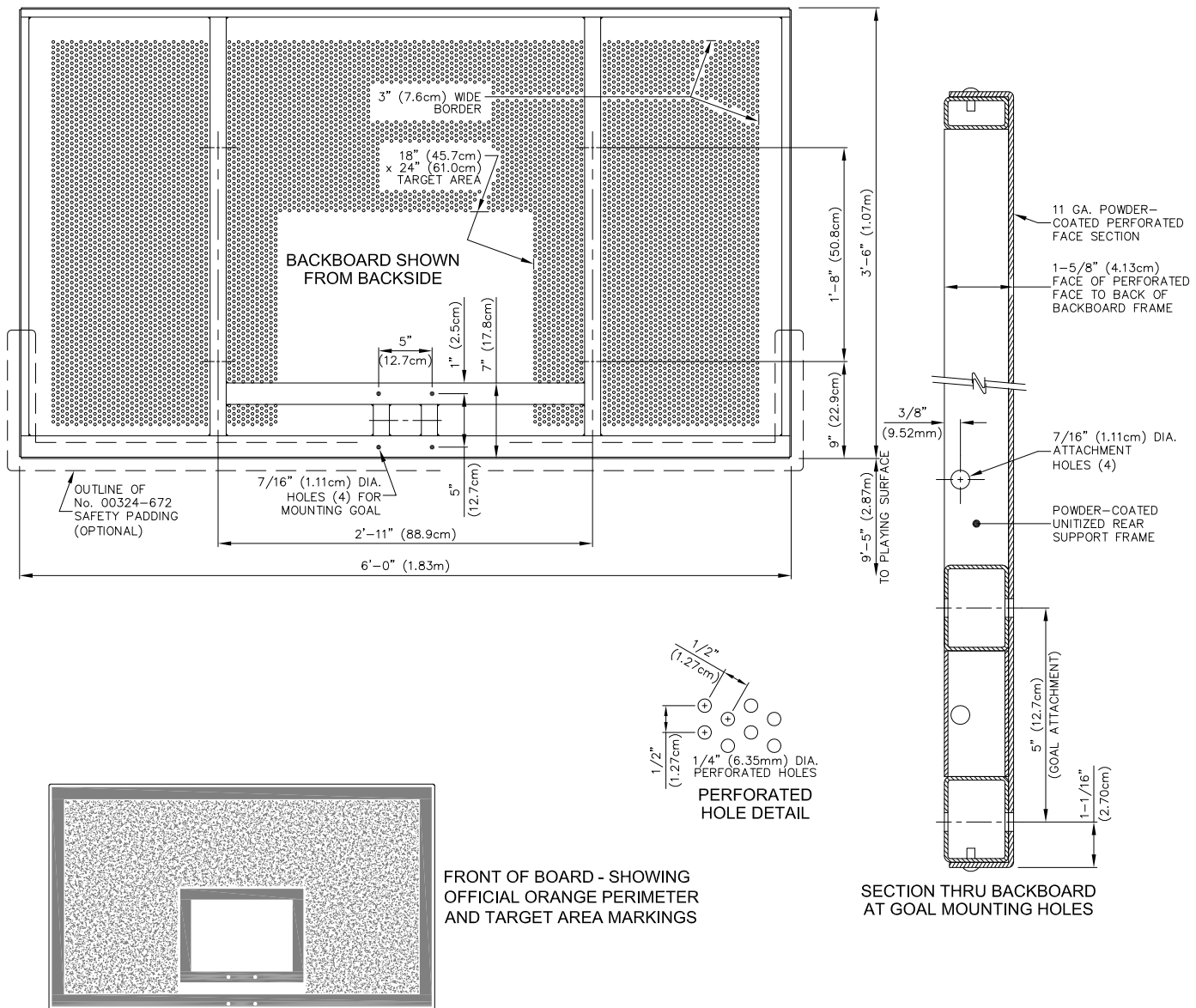


01207300 - RECTANGULAR STEEL BACKBOARD

STEEL UNIT



Porter

WWW.PORTERATHLETIC.COM/FACILITY

BASKETBALL SPECIFICATION SHEET

B-1207-3

— 01207-300 RECTANGULAR STEEL BACKBOARD

— MOUNTING KIT SELECTION
SEE B-200 FOR DETAIL ON GOAL AND PADDING OPTIONS

Porter[®]

888-277-7778 PORTER@PORTERATHLETIC.COM
© COPYRIGHT 2014 PORTER ATHLETIC - ALL RIGHTS RESERVED

PROJECT NUMBER

PROJECT NAME

9/29/2014

01207300 - RECTANGULAR STEEL BACKBOARD

STEEL UNIT

SPECIFICATIONS

PORTER No. 01207-300 STEEL RECTANGULAR BACKBOARD (EACH)

Backboard shall be official size 3'-6" x 6'-0".

Backboard shall be of a welded, unitized construction fabricated from heavy-wall rectangular steel tubing. Unitized frame shall include two (2) vertical struts located on 2'-11" centers with mounting holes for attachment to support structures. Goal mounting area shall be reinforced by horizontal and vertical support tubing to minimize undue loading on the perforated steel face section during slam-dunks, etc. Entire unitized frame structure shall be powder coated in a durable, neutral gray, weather-resistant finish before final assembly.

Face of backboard shall be fabricated from heavy, 11-gauge steel sheet with 1-1/2" deep formed perimeter flanges. Perforations shall be 1/4" in diameter, spaced on 1/2" diagonal centers to allow a 23% open area to minimize wind resistance. Perforated areas shall be located to outline a 3" wide perimeter and an official 24" wide target area. Formed flanges of face section shall be secured to rear, unitized frame with truss head-type rivets. Formed face section shall be powder coated in a durable white, weather-resistant finish before assembly to rear framework. Face of backboard to be silk-screened with orange perimeter and target area markings.

See B-200 for goal options

WARRANTY

1207 backboards protected by a 10-year limited warranty.

OPTIONAL ITEMS (SEE SPECIFICATION SHEETS FOR DETAIL)

- Padding (see B-200)
- Backboard Mounting Kit (No. 01217400): Specify when backboard is to be installed to existing structures on 2'-11" mounting centers
- Backboard Mounting Kit (No. 01219200): Specify when mounting backboard to existing No. 164, 166, 184, or 186 outdoor backstops.