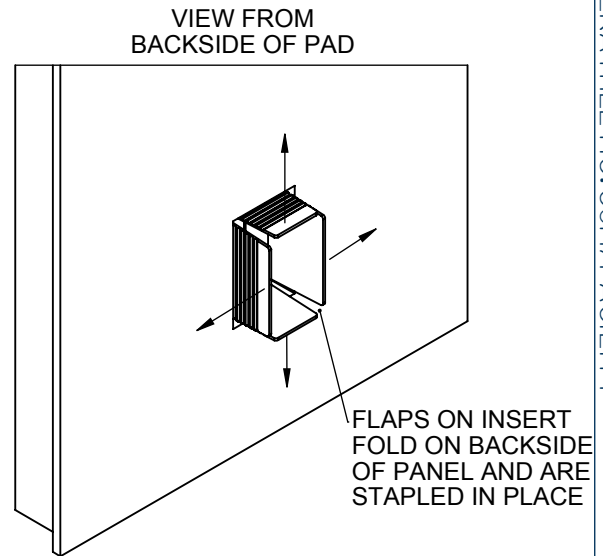
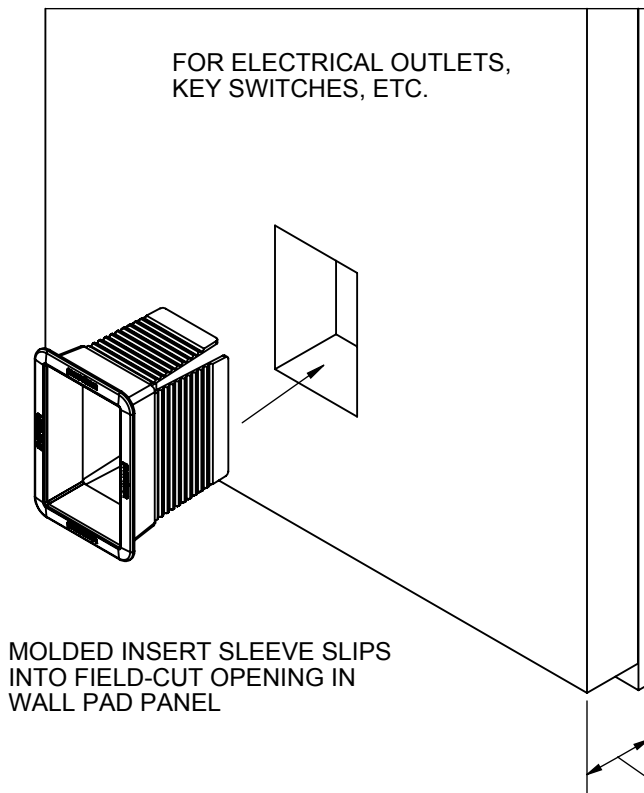
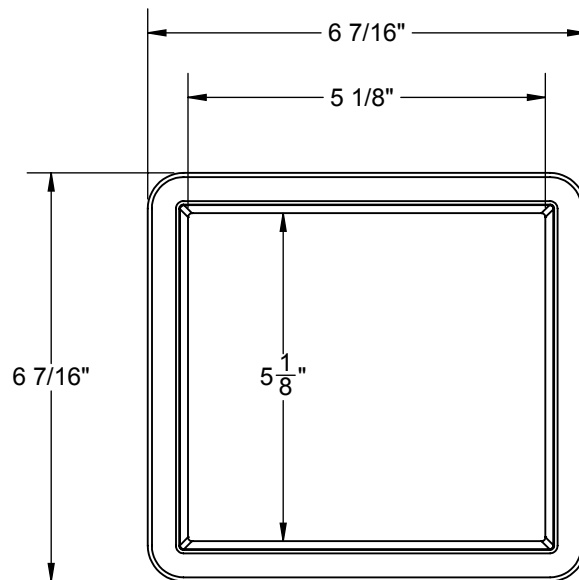
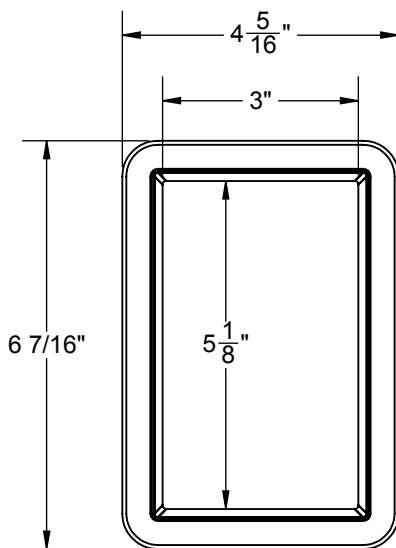


# No. 343 & 344 - MOLDED INSERTS

FOR WALL PAD CUTOUTS



\*MOLDED INSERT FIT ALL PORTER WALL PADS  
FROM 1" - 3" THICK FOAM



- **343001** MOLDED INSERT  
(FOR SINGLE-GANG BOX) - GRAY
- **343101** MOLDED INSERT  
(FOR SINGLE-GANG BOX) - GRAPHITE

- **344001** MOLDED INSERT  
(FOR DOUBLE-GANG BOX) - GRAY
- **344101** MOLDED INSERT  
(FOR DOUBLE-GANG BOX) - GRAPHITE

# No. 343 & 344 - MOLDED INSERTS

FOR WALL PAD CUTOUTS

## SPECIFICATIONS

### PORTER No. 343 AND 344 FIRE-RETARDANT MOLDED INSERTS FOR WALL PAD CUTOUTS (EACH) (PATENT No. 6,769,562)

Durable, molded inserts provide a neat, clean appearance when making cutouts in wall padding installations for electrical outlets, key switches, etc. Inserts are easily installed through field cutouts in panels, and secured with staples on the backside of panels, requiring no gluing of additional material or corner inserts.

Inserts to be molded of a flexible (92 durometer), flame-retardant rubber compound which meets a vertical burning test to conform to a V-0 classification, ASTM D-3801 Vertical Burning Test. (Also meets UL-94, IEC 707.)

Inserts provided for one-gang (3" x 5-1/8") or two-gang (5-1/8" x 5-1/8") openings, and are available in either light gray or graphite.

Inserts fit wall pads that have a thickness from 1" to 3".