

195582 - BACK-TO-BACK BACKSTOP

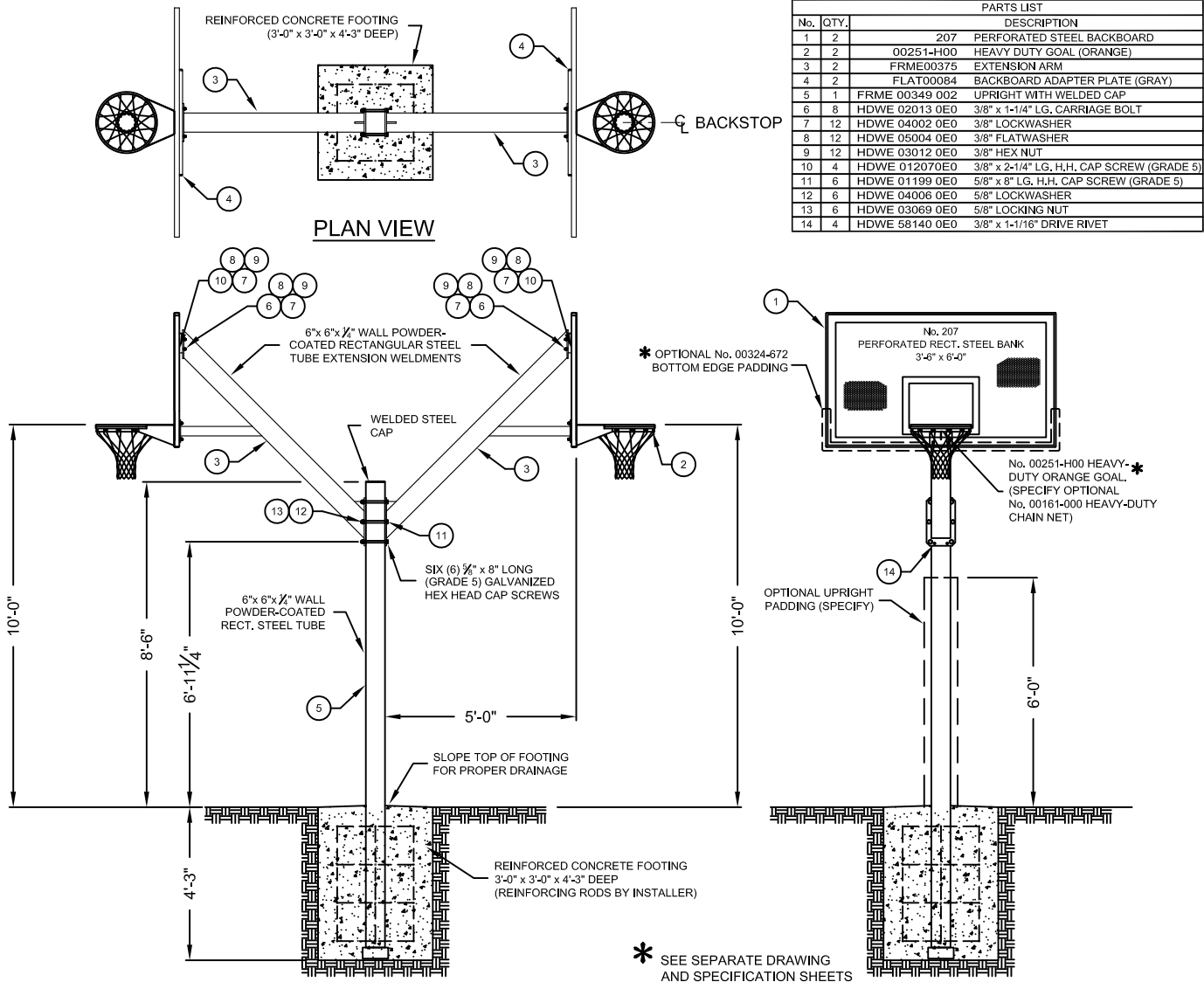
5' EXTENDED SINGLE POST BACK-TO-BACK BACKSTOP
with RECTANGULAR BACKBOARD

PORTER

WWW.PORTERATHLETIC.COM/FACILITY

BASKETBALL SPECIFICATION SHEET

R-195-2



CAUTION - CONTACT YOUR LOCAL UTILITY COMPANIES TO LOCATE BURIED ELECTRICAL, GAS AND WATER LINES BEFORE DIGGING HOLES FOR FOOTINGS. ALSO, CHECK FOR OVERHEAD UTILITIES.

195582 5' EXTENDED BACK-TO-BACK BACKSTOP WITH No. 207A PERFORATED STEEL BACKBOARD AND No. 00251-H00 HEAVY-DUTY GOAL

See B-324-72 - 00324-672 BACKBOARD PADDING KIT - BLACK (EACH)

PORTER®

888-277-7778 PORTER@PORTERATHLETIC.COM
© COPYRIGHT 2018 PORTER ATHLETIC - ALL RIGHTS RESERVED

PROJECT NUMBER

PROJECT NAME

4/10/2018

195582 - BACK-TO-BACK BACKSTOP

5' EXTENDED SINGLE POST BACK-TO-BACK BACKSTOP with RECTANGULAR BACKBOARD

SPECIFICATIONS

PORTER No. 195582 – 5' EXTENDED SINGLE POST BACK-TO-BACK BACKSTOP WITH RECTANGULAR PERFORATED STEEL BACKBOARDS AND HEAVY-DUTY GOALS

Face of backboards shall be 5'-0" (1.52m) extended from the front of the 6" (15.2cm) square upright support.

The 6" (15.2cm) square upright support (1) shall be fabricated from a heavy 1/4" (6.35mm) wall structural tube with a fully-welded weather-proof cap enclosure on the top end. Upright shall extend 4'-0" (1.2m) into concrete footing per drawing detail. Upright shall be finished in a durable black, powder-coated weather-resistant finish after final fabrication.

Extension supports (2) shall be fabricated from a 6" (15.2cm) square, 1/4" (6.35mm) wall structural tube extending from the upright support at a 45 angle at a point exceeding 7'-0" (2.13m) above the playing surface. Frame shall be a fully-welded unitized unit with a 1/2" x 9" x 14" (12.7mm x 22.86cm x 35.56cm) steel plate for securing to upright support and a bolted on backboard mounting plate. The extension support shall bolt onto the upright support via six 5/8" diameter Grade 5, plated steel machine bolts. The backboard mounting plate shall attach to the extension support via four 3/8" diameter Grade 5, plated steel carriage bolts. The extension support is designed to furnish a direct-mount type goal attachment, to eliminate undue strain on the backboard. Frame shall be further reinforced by a 3" (7.62cm) square x 1/4" (6.35mm) wall horizontal brace tube extending to the center of the goal mounting hole pattern for maximum support. Extension supports shall be finished in a durable black, powder-coated weather-resistant finish after final fabrication.

Backboards (2) shall be official size 3'-6" x 6'-0" (1.07m x 1.93m) with a heavy, unitized rear frame fabricated from heavy-wall rectangular steel tubing. Center of frame shall be provided with a heavy 7" (17.78cm) wide x 7 gauge formed steel channel for supporting backboard directly to the extension support frame. Goal mounting area shall be reinforced by horizontal and vertical framing members to minimize undue loading on the perforated steel face section during slam-dunks, etc. Entire unitized frame structure shall be powder-coated in a durable, neutral gray, weather-resistant finish before final fabrication.

Face of backboard shall be fabricated from heavy, 11-gauge steel sheet with 1-1/2" (3.81cm) deep formed perimeter flanges. Perforations shall be 1/4" (6.35mm) in diameter, spaced on 1/2" (1.27cm) diagonal centers to allow a 23% open area to minimize wind resistance. Perforated areas shall be located to outline a 3" (7.62cm) wide perimeter and an official 24" (60.96cm) wide target area. Formed flanges of face section shall be secured to rear, unitized frame with truss head-type rivets. Formed face section shall be powder-coated in a durable white, weather-resistant finish before assembly to rear framework. Face of backboard to be silk-screened with orange perimeter and target area markings.

No. 00151-H00 goals (2) shall be designed with a double rim, continuous net support and heavy-duty side and center support gusset plates for the ultimate in strength and durability for parks and playgrounds.

Double rim design shall be formed to an official 18" (45.72cm) inside diameter with 5/8" (1.58cm) diameter solid cold rolled steel bars. Rims shall be further supported by a continuous 3/16" x 1" (4.76mm x 2.54cm) steel net tie strip. Net support strip shall be precision die-cut with twelve net attachment openings to eliminate breakage associated with conventional type wire formed net tie clips.

Rims shall be supported by a heavy mounting backplate with formed side plates tangentially connecting into the net support strip for maximum strength. Center reinforcing steel gusset shall provide additional rim support. Mounting backplate shall be slotted to provide universal mounting centers from 5" x 5" (12.7cm x 12.7cm) to 5" x 4" (12.7cm x 10.2cm).

Goals finished in a durable orange powder-coat finish. Goals furnished complete with Grade 5 carriage bolts, mounting hardware and net.

Goals covered by an unconditional lifetime warranty.

OPTIONAL ITEMS TO SPECIFY

- See Page No. B-324-72 for specifications on Porter No. 00324-672 Backboard Padding (2 required).