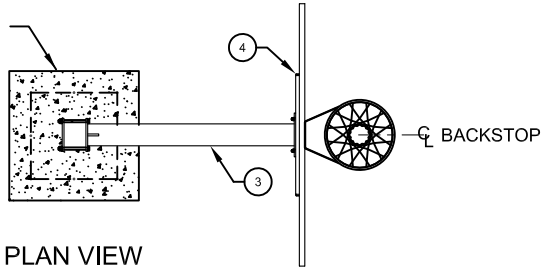


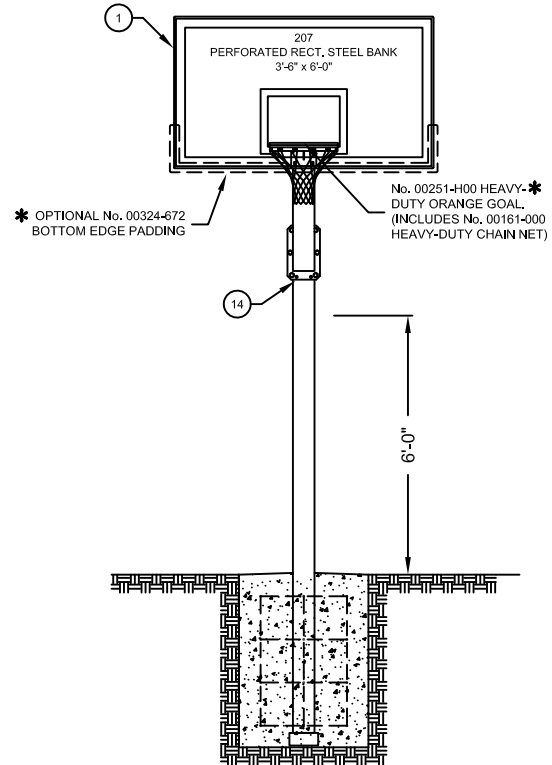
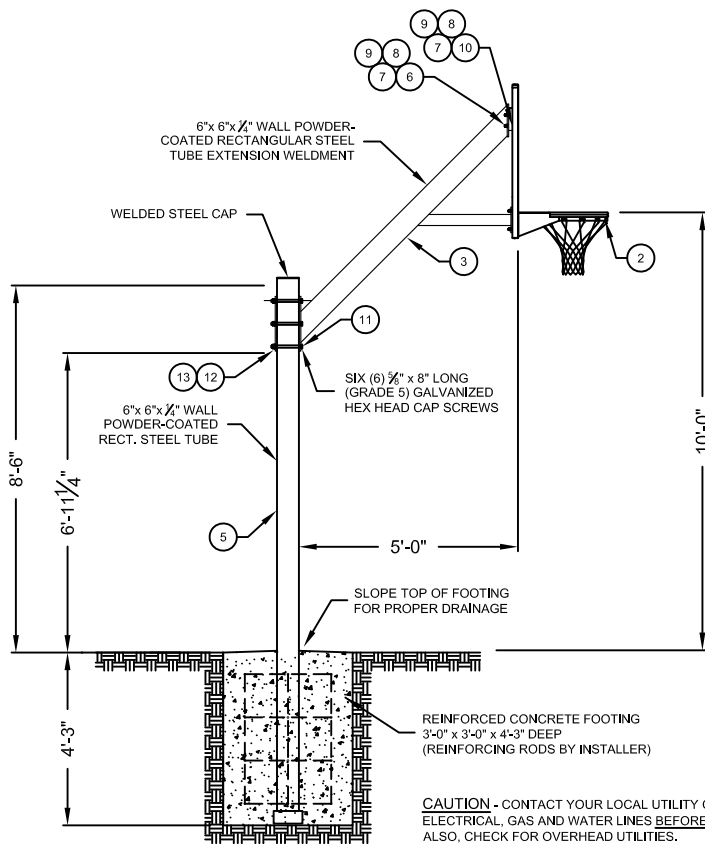
195580 - VERTICAL POST BACKSTOP

5' EXTENDED HEAVY-DUTY OUTDOOR BACKSTOP FOR RECTANGULAR BACKBOARD

REINFORCED CONCRETE FOOTING
(3'-0" x 3'-0" x 4'-3" DEEP)



PARTS LIST		
No.	QTY.	DESCRIPTION
1	1	207 PERFORATED STEEL BACKBOARD
2	1	00251-H00 HEAVY DUTY GOAL (ORANGE)
3	1	FRME00375 EXTENSION ARM
4	1	FLAT00084 BACKBOARD ADAPTER PLATE (GRAY)
5	1	FRME 00349 002 UPRIGHT WITH WELDED CAP
6	4	HDWE 02013 0EO 3/8" x 1-1/4" LG. CARRIAGE BOLT
7	6	HDWE 04002 0EO 3/8" LOCKWASHER
8	6	HDWE 05004 0EO 3/8" FLATWASHER
9	6	HDWE 03002 0EO 3/8" HEX NUT
10	2	HDWE 012070EO 3/8" x 2-1/4" LG. H.H. CAP SCREW (GRADE 5)
11	6	HDWE 01199 0EO 5/8" x 8" LG. H.H. CAP SCREW (GRADE 5)
12	6	HDWE 04006 0EO 5/8" LOCKWASHER
13	6	HDWE 03069 0EO 5/8" LOCKING NUT
14	2	HDWE 58140 0EO 3/8" x 1-1/16" DRIVE RIVET



* SEE SEPARATE DRAWING
AND SPECIFICATION SHEETS

— 195580 5' EXTENDED BACKSTOP WITH No. 207A PERFORATED
STEEL BACKBOARD AND No. 00251-H00 HEAVY-DUTY GOAL

See B-324-72 — 00324-672 BACKBOARD PADDING KIT - BLACK (EACH)

Porter[®]

1-800-637-3090 PORTER@PORTERATHLETIC.COM

© COPYRIGHT 2018 PORTER ATHLETIC - ALL RIGHTS RESERVED

PROJECT NUMBER

PROJECT NAME

Porter

WWW.PORTERATHLETIC.COM/FACILITY

BASKETBALL SPECIFICATION SHEET

R-195

4/10/2018

195580 - VERTICAL POST BACKSTOP

5' EXTENDED HEAVY-DUTY OUTDOOR BACKSTOP FOR RECTANGULAR BACKBOARD

SPECIFICATIONS

PORTER No. 195580 – 5' EXTENDED SINGLE POST BACKSTOP WITH RECTANGULAR PERFORATED STEEL BACKBOARD AND HEAVY-DUTY GOAL

Face of backboard shall be 5'-0" (1.52m) extended from the front of the 6" (15.2cm) square upright support.

The 6" (15.2cm) square upright support shall be fabricated from a heavy 1/4" (6.35mm) wall structural tube with a fully-welded weather-proof cap enclosure on the top end. Upright shall extend 4'-0" (1.2m) into concrete footing per drawing detail. Upright shall be finished in a durable black, powder-coated weather-resistant finish after final fabrication.

Extension support shall be fabricated from a 6" (15.2cm) square, 1/4" (6.35mm) wall structural tube extending from the upright support at a 45 angle at a point exceeding 7'-0" (2.13m) above the playing surface. Frame shall be a fully-welded unitized unit with a 1/2" x 9" x 14" (12.7mm x 22.86cm x 35.56cm) steel plate for securing to upright support and a bolted on backboard mounting plate. The extension support shall bolt onto the upright support via six 5/8" diameter Grade 5, plated steel machine bolts. The backboard mounting plate shall attach to the extension support via four 3/8" diameter Grade 5, plated steel carriage bolts. The extension support is designed to furnish a direct-mount type goal attachment, to eliminate undue strain on the backboard. Frame shall be further reinforced by a 3" (7.62cm) square x 1/4" (6.35mm) wall horizontal brace tube extending to the center of the goal mounting hole pattern for maximum support. Extension supports shall be finished in a durable black, powder-coated weather-resistant finish after final fabrication.

Backboard shall be official size 3'-6" x 6'-0" (1.07m x 1.93m) with a heavy, unitized rear frame fabricated from heavy-wall rectangular steel tubing. Center of frame shall be provided with a heavy 7" (17.78cm) wide x 7 gauge formed steel channel for supporting backboard directly to the extension support frame. Goal mounting area shall be reinforced by horizontal and vertical framing members to minimize undue loading on the perforated steel face section during slam-dunks, etc. Entire unitized frame structure shall be powder-coated in a durable, neutral gray, weather-resistant finish before final fabrication.

Face of backboard shall be fabricated from heavy, 11-gauge steel sheet with 1-1/2" (3.81cm) deep formed perimeter flanges. Perforations shall be 1/4" (6.35mm) in diameter, spaced on 1/2" (1.27cm) diagonal centers to allow a 23% open area to minimize wind resistance. Perforated areas shall be located to outline a 3" (7.62cm) wide perimeter and an official 24" (60.96cm) wide target area. Formed flanges of face section shall be secured to rear, unitized frame with truss head-type rivets. Formed face section shall be powder-coated in a durable white, weather-resistant finish before assembly to rear framework. Face of backboard to be silk-screened with orange perimeter and target area markings.

No. 00151-H00 goal shall be designed with a double rim, continuous net support and heavy-duty side and center support gusset plates for the ultimate in strength and durability for parks and playgrounds.

Double rim design shall be formed to an official 18" (45.72cm) inside diameter with 5/8" (1.58cm) diameter solid cold rolled steel bars. Rims shall be further supported by a continuous 3/16" x 1" (4.76mm x 2.54cm) steel net tie strip. Net support strip shall be precision die-cut with twelve net attachment openings to eliminate breakage associated with conventional type wire formed net tie clips.

Rims shall be supported by a heavy mounting backplate with formed side plates tangentially connecting into the net support strip for maximum strength. Center reinforcing steel gusset shall provide additional rim support. Mounting backplate shall be slotted to provide universal mounting centers from 5" x 5" (12.7cm x 12.7cm) to 5" x 4" (12.7cm x 10.2cm).

Goal finished in a durable orange powder-coat finish. Goal furnished complete with Grade 5 carriage bolts, mounting hardware and heavy-duty chain net.

Goal covered by an unconditional lifetime warranty.

ISSUED APRIL 10, 2018, SUBJECT TO CURRENT MANUFACTURING PROCEDURES AND CHANGES
COPYRIGHT 2018 - PORTER ATHLETIC - ALL RIGHTS RESERVED
PORTER@PORTERATHLETIC.COM