

# 00889100 - JUDGE'S STAND

## FITTED JUDGE'S STAND

**Porter**

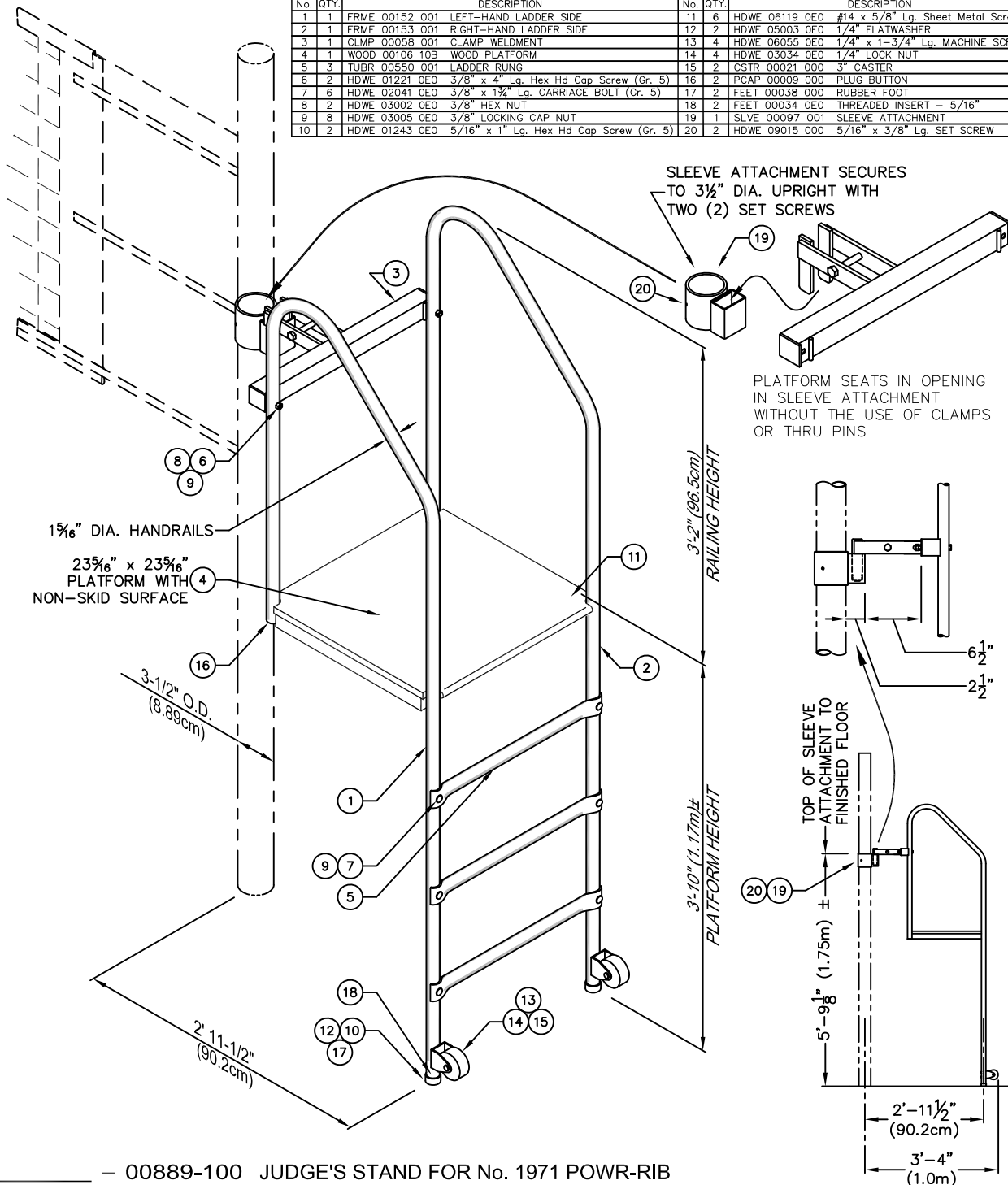
WWW.PORTERATHLETIC.COM/FACILITY

VOLLEYBALL SPECIFICATION SHEET

V-889-1

8/28/2013

| PARTS LIST - No. 00889-100 |      |  |     |      |   |
|----------------------------|------|--|-----|------|---|
| No.                        | QTY. | DESCRIPTION  | No. | QTY. | DESCRIPTION                                     |
| 1                          | 1    | FRME 00152 001 LEFT-HAND LADDER SIDE                   | 11  | 6    | HDWE 06119 0E0 #14 x 5/8" Lg. Sheet Metal Screw |
| 2                          | 1    | FRME 00153 001 RIGHT-HAND LADDER SIDE                  | 12  | 2    | HDWE 05003 0E0 1/4" FLATWASHER                  |
| 3                          | 1    | CLMP 00058 001 CLAMP WELDMENT                          | 13  | 4    | HDWE 06055 0E0 1/4" x 1-3/4" Lg. MACHINE SCREW  |
| 4                          | 1    | WOOD 00106 10B WOOD PLATFORM                           | 14  | 4    | HDWE 03034 0E0 1/4" LOCK NUT                    |
| 5                          | 3    | TUBR 00550 001 LADDER RUNG                             | 15  | 2    | CSTR 00021 000 3" CASTER                        |
| 6                          | 2    | HDWE 01221 0E0 3/8" x 4" Lg. Hex Hd Cap Screw (Gr. 5)  | 16  | 2    | PCAP 00009 000 PLUG BUTTON                      |
| 7                          | 6    | HDWE 02041 0E0 3/8" x 1 1/2" Lg. CARRIAGE BOLT (Gr. 5) | 17  | 2    | FEET 00038 000 RUBBER FOOT                      |
| 8                          | 2    | HDWE 03002 0E0 3/8" HEX NUT                            | 18  | 2    | FEET 00034 0E0 THREADED INSERT - 5/16"          |
| 9                          | 8    | HDWE 03005 0E0 3/8" LOCKING CAP NUT                    | 19  | 1    | SLVE 00097 001 SLEEVE ATTACHMENT                |
| 10                         | 2    | HDWE 01243 0E0 5/16" x 1" Lg. Hex Hd Cap Screw (Gr. 5) | 20  | 2    | HDWE 09015 000 5/16" x 3/8" Lg. SET SCREW       |



— 00889-100 JUDGE'S STAND FOR No. 1971 POWR-RIB

— 9931xx

SET OF PROTECTIVE PADS FOR  
No. 00889-100 JUDGE'S STAND  
(CUSTOM COLORS AVAILABLE - SEE PAGE No. V-993-1)

**Porter**

888-277-7778 PORTER@PORTERATHLETIC.COM  
© COPYRIGHT 2012 PORTER ATHLETIC - ALL RIGHTS RESERVED

PROJECT NUMBER

PROJECT NAME

# 00889100 - JUDGE'S STAND

## FITTED JUDGE'S STAND

### SPECIFICATIONS

#### PORTER No. 00889-100 JUDGE'S STAND

Judge's Stand shall be designed to attach to the 3-1/2" (8.9cm) O.D. upright of the No. 1971 / 1951 / 851 3-1/2 sleeve-type, No. 1973 3" sleeve-type, and 1975 / 1955 / 855 portable volleyball systems. Attachment to upright shall be by means of a special sleeve attachment, which is permanently secured in place at the proper height by means of locking-type set screws. Judge's Stand assembly shall be designed with a special attachment fitting to seat in a cavity of the sleeve attachment mounted on the 3-1/2" (8.9cm) O.D. upright without the use of additional clamps.

Platform support side frames shall consist of formed 1-5/16" (3.3cm) O.D. steel tube handrail/ladder sections with a heavy angle weldment for the support of the platform. Formed handrails shall extend 38" (96.5cm) above the platform. Three (3) special, formed, 1-5/16" (3.3cm) O.D. ladder rung sections shall be equally spaced to allow for ease of mounting platform. Lower end of ladder side frames shall be equipped with heavy-duty diameter, nonmarking rubber pads. Side frames are also equipped with 3" (7.6cm) diameter, non-marking caster wheels positioned for ease of tipping and transporting to storage areas. Side frames and ladder rungs shall be finished in a durable powder-coated finish.

Platform shall be 23-5/16" x 23-5/16" (59.2cm x 59.2cm), constructed of a high quality 3/4" (1.9cm) thick birch laminate, with a reinforced understructure. Platform shall be finished in a clear lacquer with a non-slip top surface. Top of platform shall be positioned 3'-10" (1.17m) above playing surface when in use.

#### OPTIONAL ITEMS TO SPECIFY

See Page No. V-993-1 for specifications on Porter No. 9931xx Set of Protective Pads.