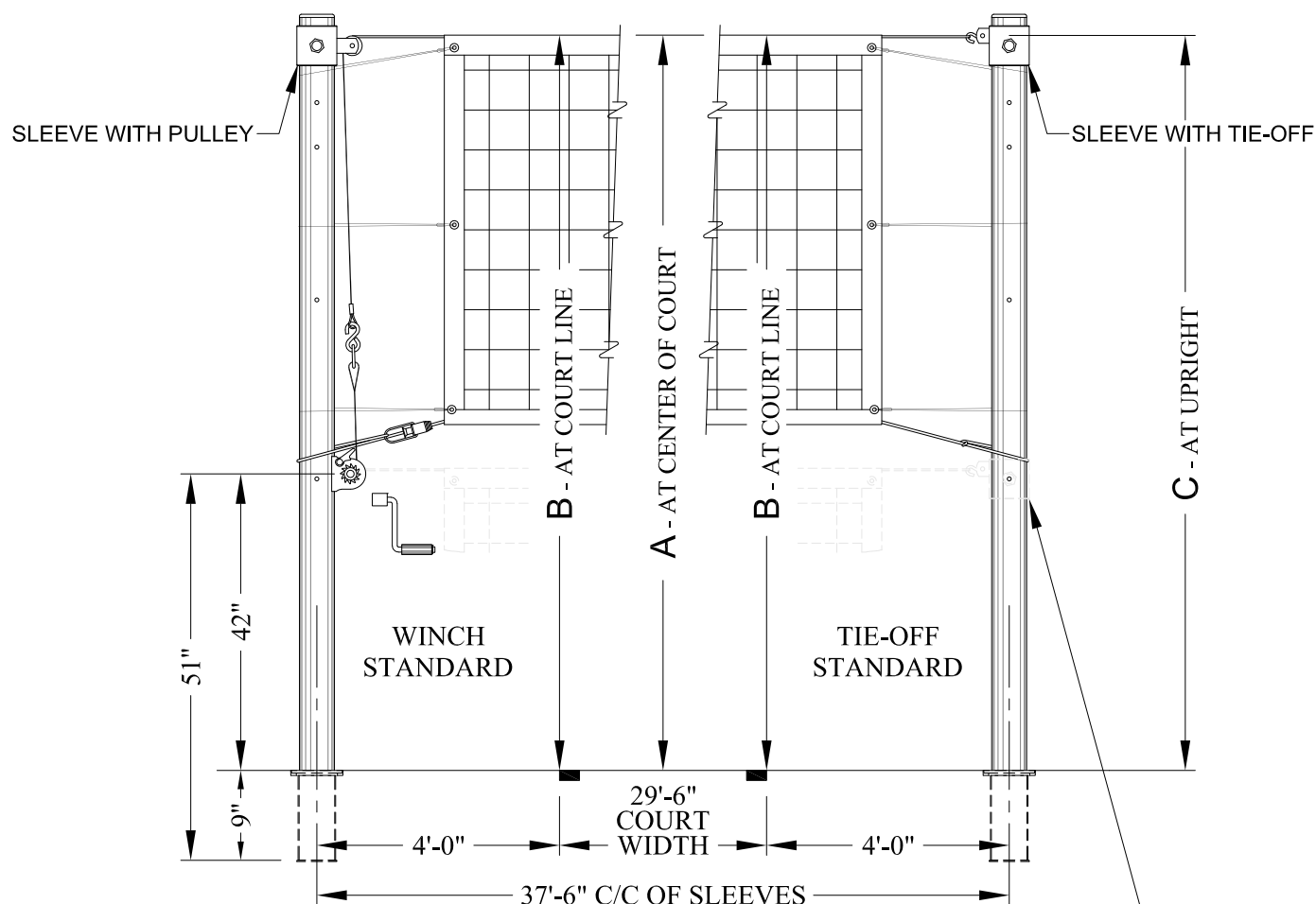


FOR ASSEMBLY OF No. 851 END STANDARDS, SEE PAGES 1 and 2
FOR ASSEMBLY OF No. 852 CENTER STANDARD, SEE PAGES 3 thru 5



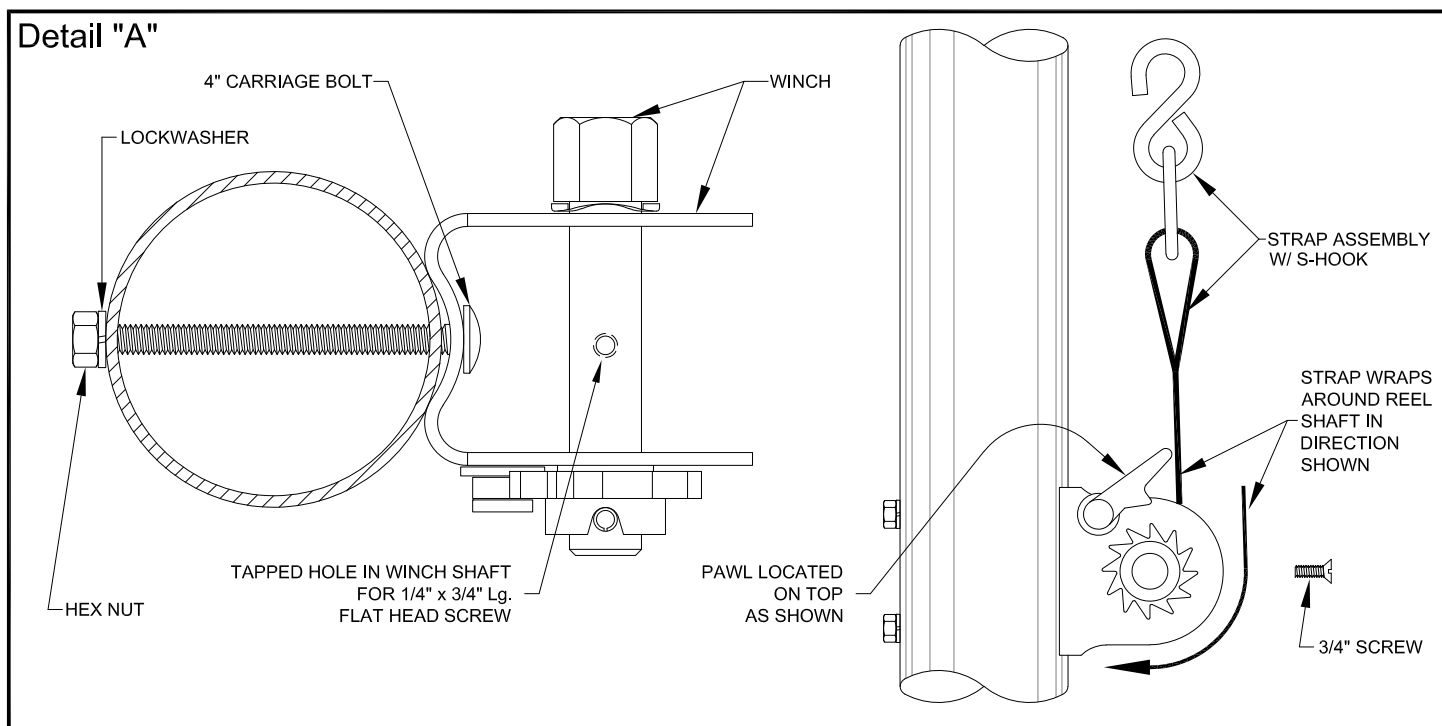
FOR TENNIS NET HEIGHT OF 3'-6", LOCATE SLEEVE WITH NET TIE-OFF AT LOWER HOLE TENNIS NET TOP CABLE FEEDS DIRECTLY INTO WINCH AS SHOWN

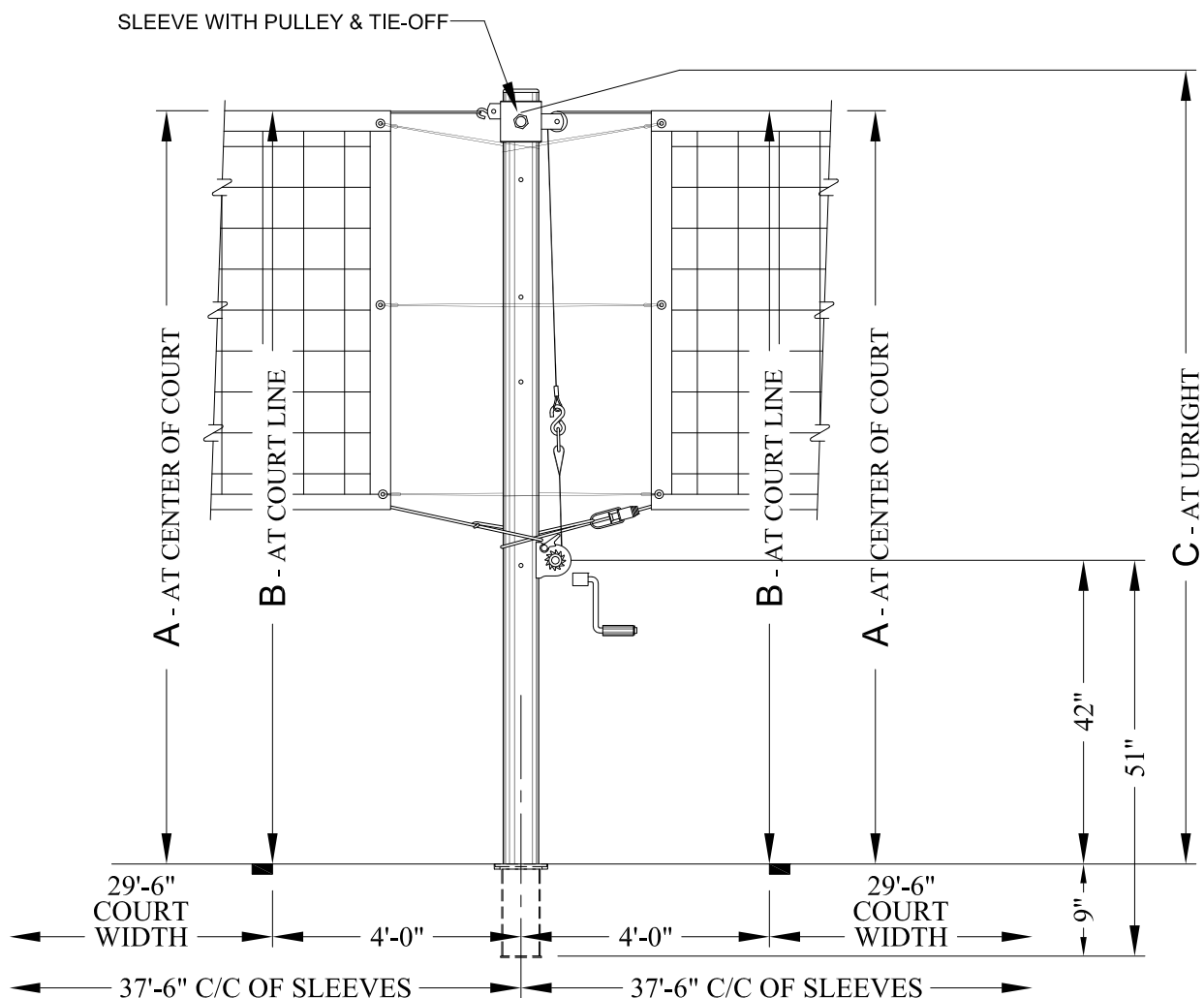
VOLLEYBALL NET HEIGHTS						
SCHOLASTIC LEVELS	GIRLS / WOMEN			BOYS / MEN		
	A	B	C	A	B	C
AGES 12 YEARS AND UNDER	7'-0"	7'-0 ³ / ₄ "	7'-1 ¹ / ₈ "	7'-0"	7'-0 ³ / ₄ "	7'-1 ¹ / ₈ "
GRADES 7 THRU 9 (MIDDLE SCHOOL)	7'-4 ¹ / ₈ "	7'-4 ⁷ / ₈ "	7'-5 ¹ / ₄ "	7'-4 ¹ / ₈ "	7'-4 ⁷ / ₈ "	7'-5 ¹ / ₄ "
GRADES 7 THRU 9 (Jr. HIGH SCHOOL)	7'-4 ¹ / ₈ "	7'-4 ⁷ / ₈ "	7'-5 ¹ / ₄ "	7'-11 ⁵ / ₈ "	8'-0 ³ / ₈ "	8'-0 ³ / ₄ "
GRADES 9 THRU COLLEGIATE	7'-4 ¹ / ₈ "	7'-4 ⁷ / ₈ "	7'-5 ¹ / ₄ "	7'-11 ⁵ / ₈ "	8'-0 ³ / ₈ "	8'-0 ³ / ₄ "

CAUTION - Net height dimensions given allow for maximum allowable net sag. Overtightening of the net could cause possible equipment damage or failure, and void all warranties.

1. Unpack all parts and check against parts list to ensure that all have been included. Tools required - ½" wrench, slotted and phillips screwdrivers, and tape measure.
2. Assemble strap assembly with "S" hook to shaft on the winch using 1/4" x 3/4" lg. flat head screw thru grommet on strap. See Detail "A".
3. Assemble the winch to one upright post thru pre-drilled holes, using two 5/16" x 4" lg. carriage bolts, 5/16" lockwashers and 5/16" hex nuts. NOTE - pawl on the winch (which engages into gear) **MUST** be on top of the reel to operate properly. See Detail "A", and detail on Page 1.
4. Assemble sleeve with pulley to upright post with the winch (from Step No. 3). Engage spring-loaded lock assembly in one of the pre-drilled holes. See detail on Page 1.
5. Assemble sleeve with net tie-off to other upright post. Engage spring-loaded lock assembly in one of the pre-drilled holes. See detail on Page 1.
6. Place assembled standards in floor sleeves. Rotate standards until winch and tie-off sleeve are oriented as shown in the detail on Page 1.
7. Follow specific net attachment instructions furnished with the net. Stretch net out on floor between volleyball standards. Protect net from dirt.
8. Starting at tie-off standard, place end loop (on net cable) over "S" hook on tie-off sleeve. See detail on Page 1.
9. Stretch net across court and feed cable over and thru pulley sheave on winch standard. Pull nylon strap on the winch upward, and secure "S" hook to end loop on net cable. See detail on Page 1.
10. Adjust net to desired height by pulling out spring-loaded lock assemblies on sleeve with pulley, and sleeve with net tie-off. Slide sleeves up or down to desired net height, then release spring-loaded lock assemblies. NOTE - make sure the spring-loaded lock assemblies are engaged in a hole on the upright posts. See net height chart on page 1. Net height is measured at center of court. Note that a maximum of ¾" net sag is allowed - net height can be ¾" higher at court lines than at center of court.

NOTE - Allow for proper net sag, from center of court to court lines. See heights A and B in chart on Page 1.

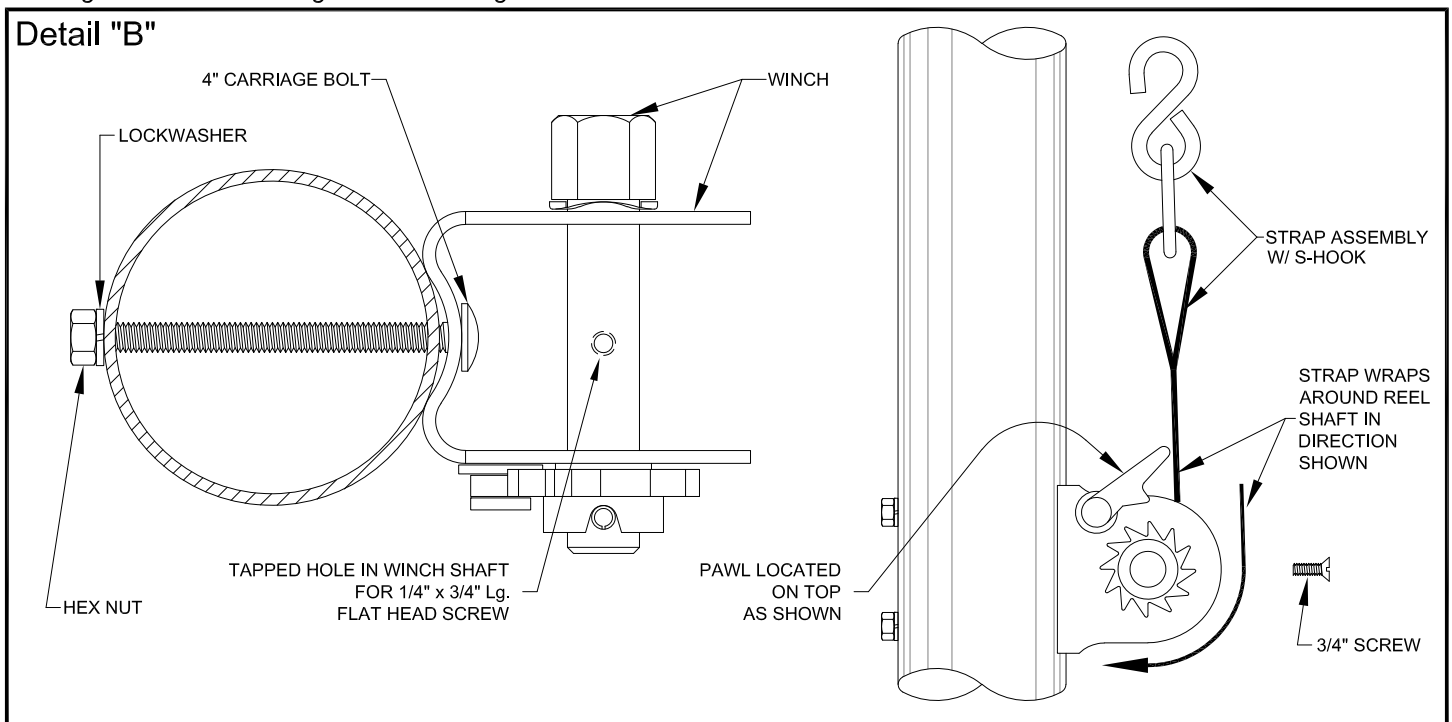




VOLLEYBALL NET HEIGHTS						
SCHOLASTIC LEVELS	GIRLS / WOMEN			BOYS / MEN		
	A	B	C	A	B	C
AGES 12 YEARS AND UNDER	7'-0"	7'-0 ³ / ₄ "	7'-1 ¹ / ₈ "	7'-0"	7'-0 ³ / ₄ "	7'-1 ¹ / ₈ "
GRADES 7 THRU 9 (MIDDLE SCHOOL)	7'-4 ¹ / ₈ "	7'-4 ⁷ / ₈ "	7'-5 ¹ / ₄ "	7'-4 ¹ / ₈ "	7'-4 ⁷ / ₈ "	7'-5 ¹ / ₄ "
GRADES 7 THRU 9 (Jr. HIGH SCHOOL)	7'-4 ¹ / ₈ "	7'-4 ⁷ / ₈ "	7'-5 ¹ / ₄ "	7'-11 ⁵ / ₈ "	8'-0 ³ / ₈ "	8'-0 ³ / ₄ "
GRADES 9 THRU COLLEGIATE	7'-4 ¹ / ₈ "	7'-4 ⁷ / ₈ "	7'-5 ¹ / ₄ "	7'-11 ⁵ / ₈ "	8'-0 ³ / ₈ "	8'-0 ³ / ₄ "

CAUTION - Net height dimensions given allow for maximum allowable net sag. Overtightening of the net could cause possible equipment damage or failure, and void all warranties.

1. Unpack all parts and check against parts list to ensure that all have been included. Tools required - $\frac{1}{2}$ " wrench, slotted and phillips screwdrivers, and tape measure.
2. Assemble strap assembly with "S" hook to shaft on reel assembly using $\frac{1}{4}$ " x $\frac{3}{4}$ " lg. flat head screw thru grommet on strap. See Detail "B".
3. Assemble winch to upright post thru pre-drilled holes, using two $\frac{5}{16}$ " x 4" lg. carriage bolts, $\frac{5}{16}$ " lockwashers and $\frac{5}{16}$ " hex nuts. NOTE - pawl on the winch (which engages into gear) **MUST** be on top of the reel to operate properly. See Detail "B", and detail on Page 3.
4. Assemble sleeve with pulley and net tie-off to upright post from top. Engage spring-loaded lock assembly in one of the pre-drilled holes. See detail on Page 3.
5. Place assembled standard in floor sleeve. Rotate standard until the winch is oriented the same as reel assembly on No. 851 winch standard. See Detail "C" on Page 5.
6. Follow specific net attachment instructions furnished with the net. Stretch net out on floor between volleyball standards. Protect net from dirt.
7. Starting at tie-off standard from the 851 system, place end loop (on net cable) over "S" hook on tie-off sleeve. See Detail "C" on Page 5.
8. Stretch net across court and feed cable over and thru pulley sheave on 852 center standard. Pull nylon strap on the winch upward, and secure "S" hook to end loop on net cable. See Detail "C" on Page 5.
9. Repeat Steps No. 7 and 8 for second net. Starting at center standard from 852 system, place end loop (on net cable) over "S" hook on pulley/tie-off sleeve. See Detail "C" on Page 5.
10. Stretch second net across second court and feed cable over and thru pulley sheave on 851 winch standard. Pull nylon strap on the winch upward, and secure "S" hook to end loop on net cable. See Detail "C" on Page 5.
11. Adjust net to desired height by pulling out spring-loaded lock assemblies. Slide sleeves up or down to desired net height, then release spring-loaded lock assemblies. NOTE - make sure the spring-loaded lock assemblies are engaged in a hole on the upright posts. See net height chart on page 3. Net height is measured at center of court. Note that a maximum of $\frac{3}{4}$ " net sag is allowed - net height can be $\frac{3}{4}$ " higher at court lines than at center of court.

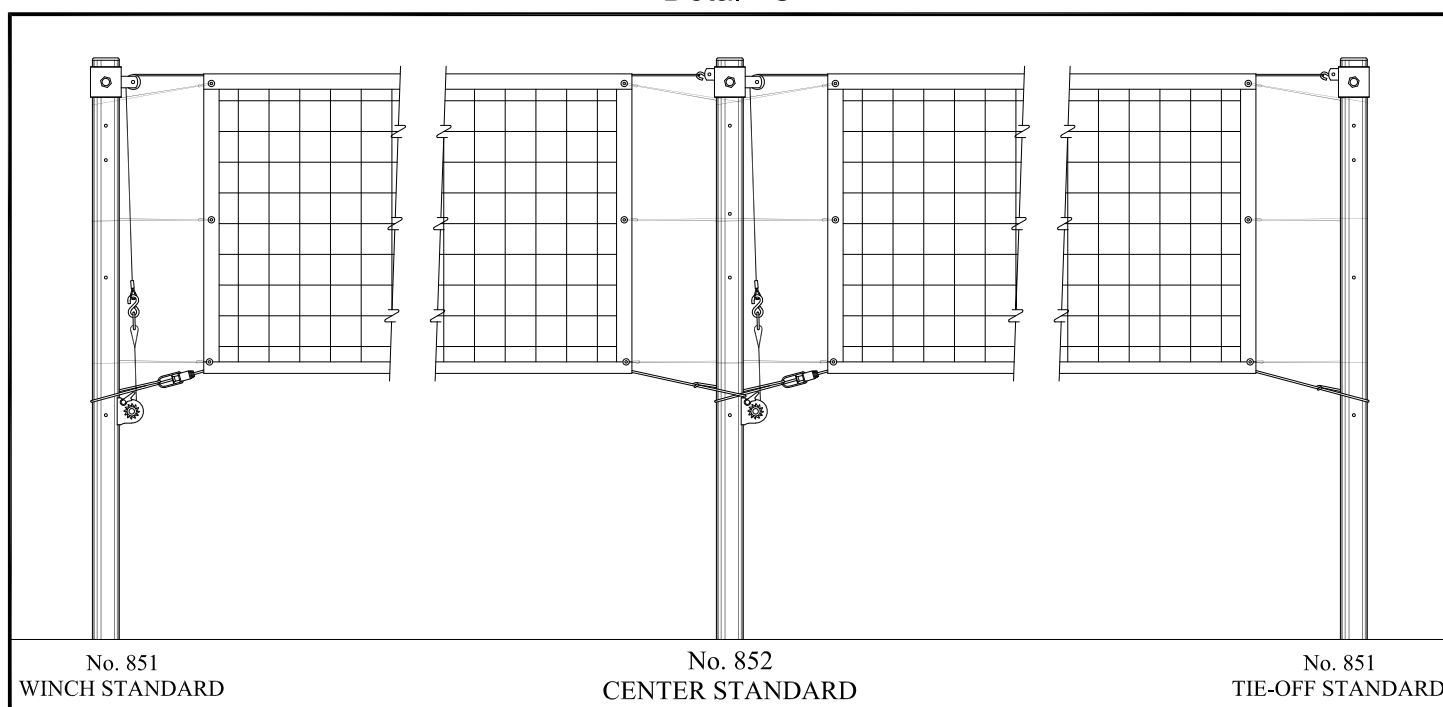




www.porterathletic.com.com
800-637-3090

No. 851 & 852 VOLLEYBALL STANDARDS ASSEMBLY and INSTALLATION INSTRUCTIONS

Detail "C"



SAFETY INSTRUCTIONS

- Read all instructions before use to avoid injury.
- Improper use of product can result in serious injury.
- Read all product safety labels.
- Keep this instruction manual for future reference.



WARNING

- Serious injuries, including permanent paralysis, can occur in volleyball. Such can be caused by falls on the head, neck and other parts of the body, or by running into unpadded volleyball standards. Approved upright padding is mandatory.
- While it cannot be eliminated, the risk of injuries can be greatly reduced by following proper safety guidelines and providing proper maintenance and safety inspections.



CAUTION

- Make sure the spring-loaded lock assemblies on all sleeves are fully engaged in holes on the upright posts.
- Cable tension must be released before adjusting net height. Failure to do so may cause damage to the equipment, or cause personal injury.
- Under no circumstances should volleyball standards be stored leaning against a wall or other rigid objects.
- Lay volleyball standards down unless they can be securely fastened to a stable object or properly positioned in a storage rack specifically designed for volleyball standards.


NOTICE

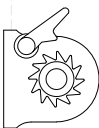
- Inspect this equipment for wear, loose fittings, damage and proper stability before each use. Replace defective or worn parts immediately. If in doubt, do not use this equipment until repaired. Check pressure-lock assembly for wear and to ensure it is functioning properly.
- Lubricate threaded studs on pressure-lock assembly periodically (at least twice a year) to minimize wear and to ensure proper operation.
- Do not over tighten the volleyball net, as damage to uprights may result and void all written or implied warranties.

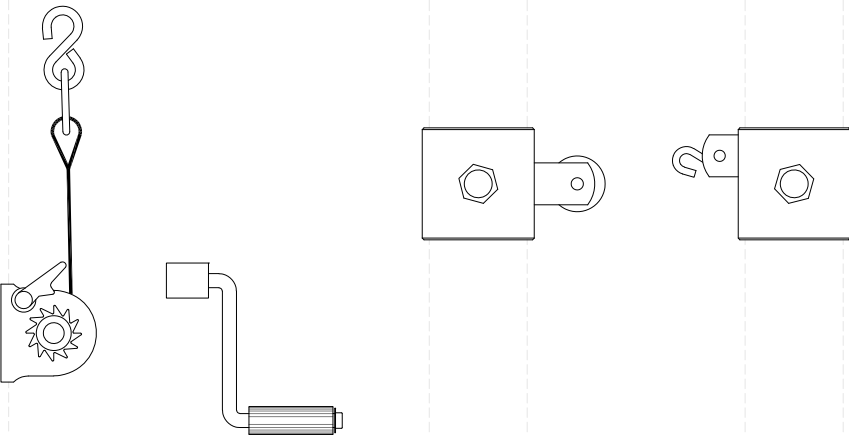


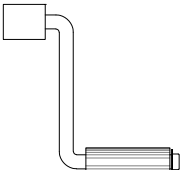
WARNING: Cancer and Reproductive Harm –
For more information go to www.p65warnings.ca.gov

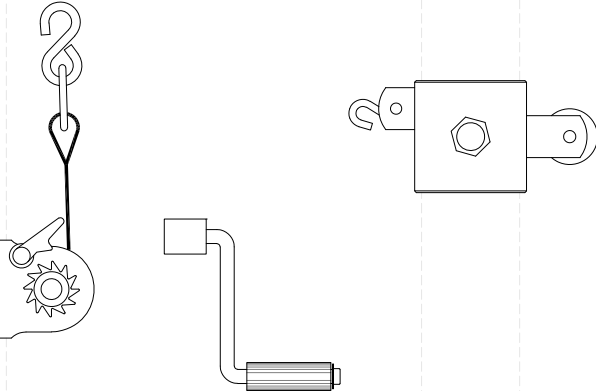
F

PART NUMBER	DESCRIPTION
UPRT00209000	3-1/2" OD POLE UPRIGHT ASSEMBLY WITH CAPS; CENTER OR END STANDARD POLE
	

PART NUMBER	DESCRIPTION
WINH00058001	REPLACEMENT WINCH
	

PART NUMBER	DESCRIPTION
FITG00090000	SLEEVE WITH TIE-OFF, SLEEVE WITH PULLEY, WINCH W/ CRANK, AND HARDWARE
	

PART NUMBER	DESCRIPTION
WINH00027100	WINCH CRANK HANDLE
	

PART NUMBER	DESCRIPTION
FITG00091000	SLEEVE WITH PULLEY AND TIE-OFF, WINCH W/ CRANK, AND HARDWARE
	

PART NUMBER	DESCRIPTION
STAP00015000	REPLACEMENT STRAP ASSEMBLY W/ S-HOOK
