

# 00311-100 - WALL-MOUNTED BACKSTOP

CENTER-STRUT® COLUMN MOUNT BACKSTOP WITH HEIGHT ADJUSTMENT

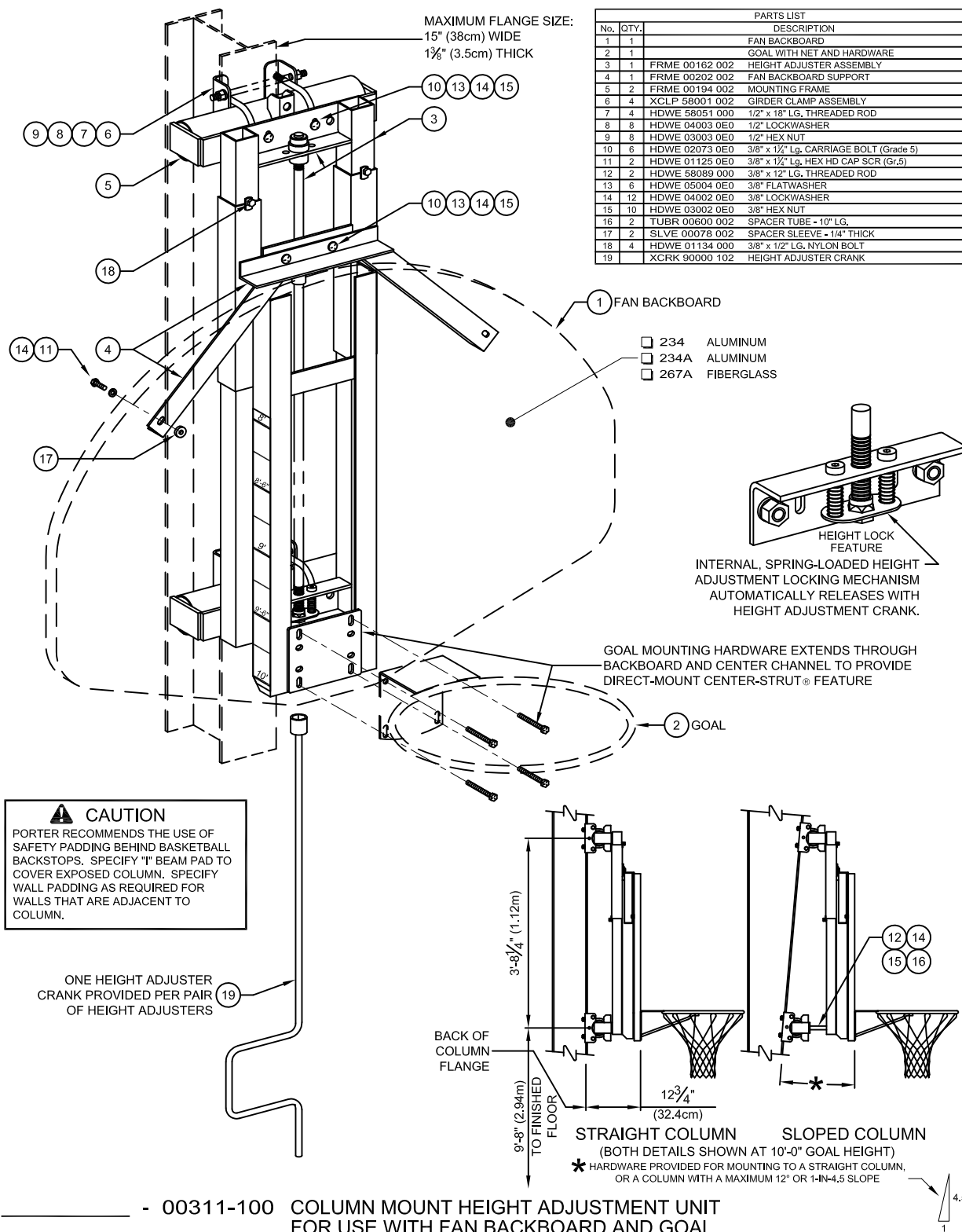
PORTER

WWW.PORTERATHLETIC.COM/FACILITY

WALL MOUNT SPECIFICATION SHEET

W-311-1

10/1/2015



- 00311-100 COLUMN MOUNT HEIGHT ADJUSTMENT UNIT  
FOR USE WITH FAN BACKBOARD AND GOAL

PORTER®

888-277-7778 PORTER@PORTERATHLETIC.COM  
© COPYRIGHT 2015 PORTER ATHLETIC - ALL RIGHTS RESERVED

PROJECT NUMBER

PROJECT NAME

# 00311-100 - WALL-MOUNTED BACKSTOP

CENTER-STRUT® COLUMN MOUNT BACKSTOP WITH HEIGHT ADJUSTMENT

## SPECIFICATIONS

### PORTER No. 00311-100 CENTER-STRUT® COLUMN MOUNT BACKSTOP WITH HEIGHT-ADJUSTMENT FOR FAN BACKBOARD AND GOAL

Unit shall be designed and furnished with all necessary fittings and hardware to mount on an exposed flange straight or sloped column with a maximum flange width of 15".

Height adjustment unit shall be designed to provide an adjustable, direct mount (Center-Strut®) goal attachment system to eliminate any strain on the backboard should a player hang on the front mounted goal. Height adjustment units without the prescribed direct mount goal feature will not be approved as equal. Height adjustment feature will allow goal height settings from 8'-0" to the official 10'-0" for use by all age groups. Unit shall be designed for use only with Porter No. 234, 234A and 267A fan backboards.

Center unitized support frame shall be fabricated by dual, 2-3/16" square heavy wall zinc plated guide tubes located on 11-3/16" centers. Ends of guide tubes shall be welded to heavy, formed mounting brackets. Outer dual slide tubes shall support heavy structural steel angle sections which extend downward to accept a direct mount (Center-Strut®) goal mounting system, to accept the four goal mounting bolts. Slide tube assembly shall be provided with a heavy steel section to attach a special upper backboard support assembly to secure the unit to the upper two corners of the fan-shaped backboard.

Height adjustment unit shall incorporate a centrally located 3/4" diameter Acme threaded rod equipped with precision, hardened steel roller thrust bearings for ease of operation from the playing floor by means of an awning crank-type mechanism. Height adjustment system shall incorporate an internal, spring-loaded height locking mechanism to automatically lock and hold unit at any desired goal height during play. Lock mechanism automatically releases when height setting changes are made with adjustment crank assembly. Adjustment crank assembly shall be provided with each pair of height adjustment units. A height setting scale shall be located on the side of the unit to visually determine height settings from 8'-0" to 10'-0" in 3" increments.

Height adjustment system shall be furnished with special adjustable weldments equipped with precision, die-formed clamp fittings, spacer tubes and all hardware for mounting to straight or sloped-type exposed flanges. Height adjustment frame and attachment assemblies shall be finished with one coat of black enamel.

Specify fan backboard and goal as required.

Limited lifetime warranty on backboard when used in conjunction with Porter No. 00311-100 Center-Strut Column Mount Height Adjustment Unit.

### OPTIONAL ITEMS TO SPECIFY

- See Page No. G-355 for specifications on Porter "I" Beam Pads.
- See MATS AND WALL PADDING section for wall padding on walls that are adjacent to column.