

00310-100 - WALL-MOUNTED BACKSTOP

CENTER-STRUT® COLUMN MOUNT BACKSTOP

Porter

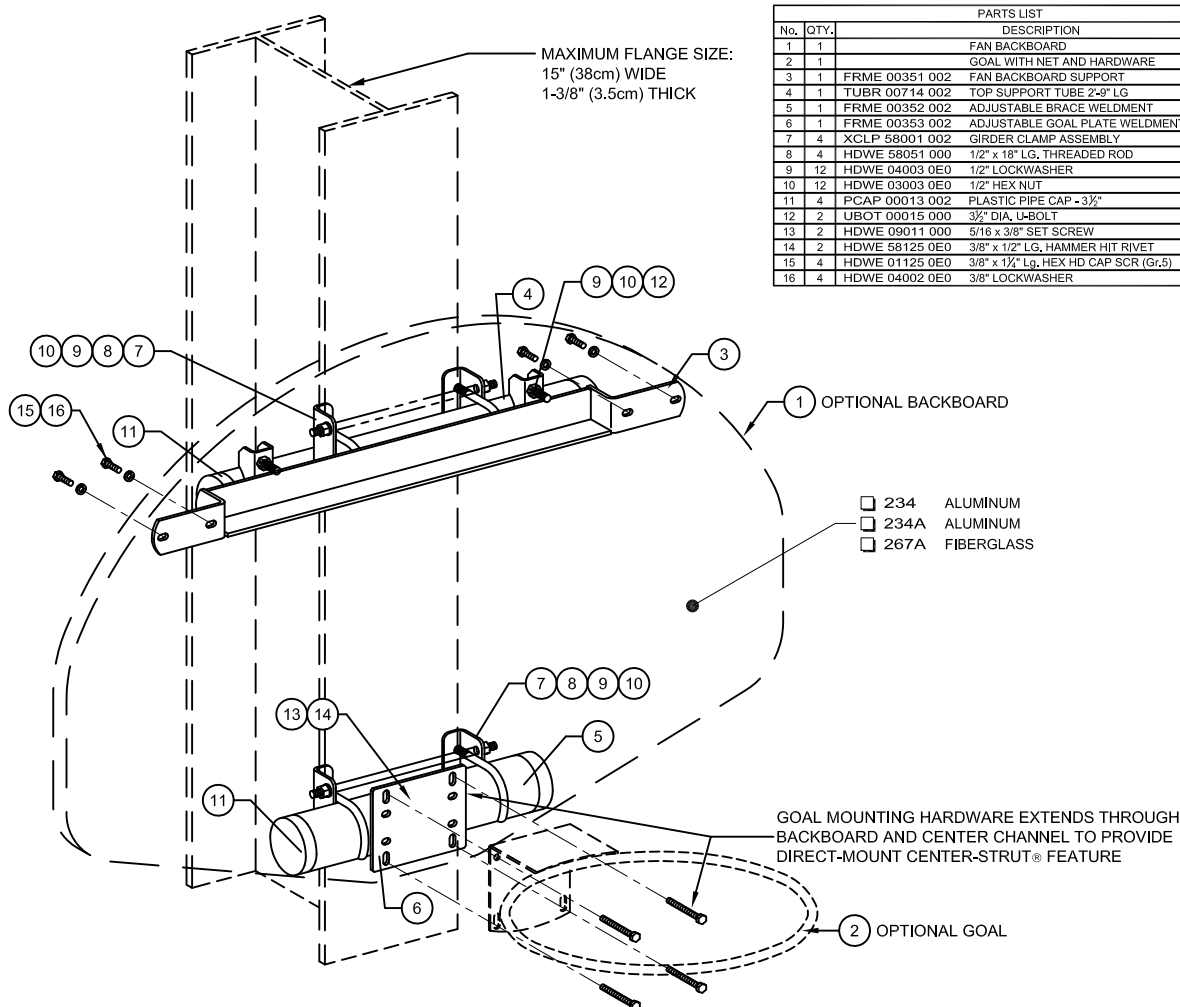
WWW.PORTERATHLETIC.COM/FACILITY

WALL MOUNT SPECIFICATION SHEET

W-310-1

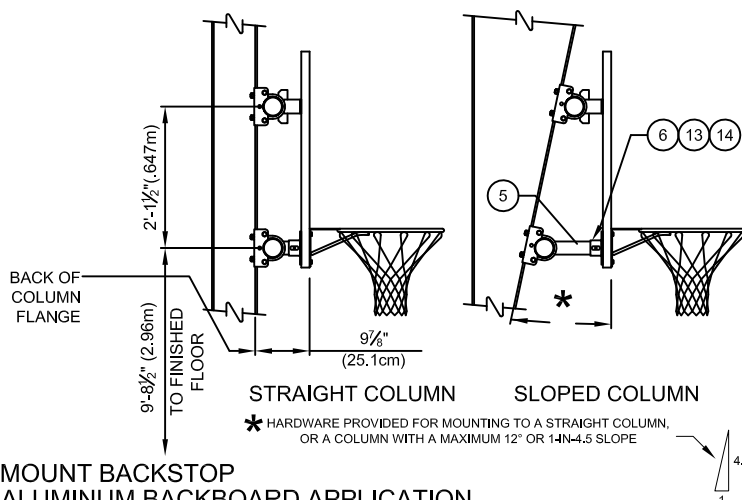
10/1/2015

PARTS LIST		
No.	QTY.	DESCRIPTION
1	1	FAN BACKBOARD
2	1	GOAL WITH NET AND HARDWARE
3	1	FRME 00351 002 FAN BACKBOARD SUPPORT
4	1	TUBR 00714 002 TOP SUPPORT TUBE 2-8" LG
5	1	FRME 00352 002 ADJUSTABLE BRACE WELDMENT
6	1	FRME 00353 002 ADJUSTABLE GOAL PLATE WELDMENT
7	4	XCLP 58001 002 GIRDER CLAMP ASSEMBLY
8	4	HDWE 58051 000 1/2" x 18" LG. THREADED ROD
9	12	HDWE 04003 0E0 1/2" LOCKWASHER
10	12	HDWE 03003 0E0 1/2" HEX NUT
11	4	PCAP 00013 002 PLASTIC PIPE CAP - 3/2"
12	2	UBOT 00015 000 3/2" DIA. U-BOLT
13	2	HDWE 09011 000 5/16 x 3/8" SET SCREW
14	2	HDWE 58125 0E0 3/8" x 1/2" LG. HAMMER HIT RIVET
15	4	HDWE 01125 0E0 3/8" x 1/2" Lg. HEX HD CAP SCR (Gr.5)
16	4	HDWE 04002 0E0 3/8" LOCKWASHER



CAUTION

PORTER RECOMMENDS THE USE OF SAFETY PADDING BEHIND BASKETBALL BACKSTOPS. SPECIFY "I" BEAM PAD TO COVER EXPOSED COLUMN. SPECIFY WALL PADDING AS REQUIRED FOR WALLS THAT ARE ADJACENT TO COLUMN.



- 00310-100 COLUMN MOUNT BACKSTOP FOR FAN ALUMINUM BACKBOARD APPLICATION

Porter

888-277-7778 PORTER@PORTERATHLETIC.COM
© COPYRIGHT 2015 PORTER ATHLETIC - ALL RIGHTS RESERVED

PROJECT NUMBER

PROJECT NAME

00310-100 - WALL-MOUNTED BACKSTOP

CENTER-STRUT® COLUMN MOUNT BACKSTOP

SPECIFICATIONS

PORTER No. 00310-100 CENTER-STRUT® COLUMN MOUNT BACKSTOP FOR FAN BACKBOARD AND GOAL

Unit shall be designed and furnished with all necessary fittings and hardware to mount a fan-shaped backboard and goal on an exposed flange straight or sloped column with a maximum flange width of 15".

System shall be furnished with special attachment assemblies equipped with precision, die-formed clamp fittings, and all hardware for mounting to straight or sloped-type exposed flanges. Lower attachment assembly shall be adjustable to accommodate a sloped column. Attachment assemblies shall be finished with one coat of black enamel.

Backboard shall be secured to system with upper backboard extension assembly and lower Center-Strut® weldment. Goal shall mount directly through the backboard and into a heavy steel flange Center-Strut® at the lower attachment assembly to eliminate any strain on the backboard, should a player hang on the front-mounted goal.

Specify fan backboard and goal as required.

Limited lifetime warranty on backboard when used in conjunction with Porter No. 00310-100 Center-Strut® Column Mount Unit.

OPTIONAL ITEMS TO SPECIFY

- See Page No. G-355 for specifications on Porter "I" Beam Pads.
- See MATS AND WALL PADDING section for wall padding on walls that are adjacent to column.