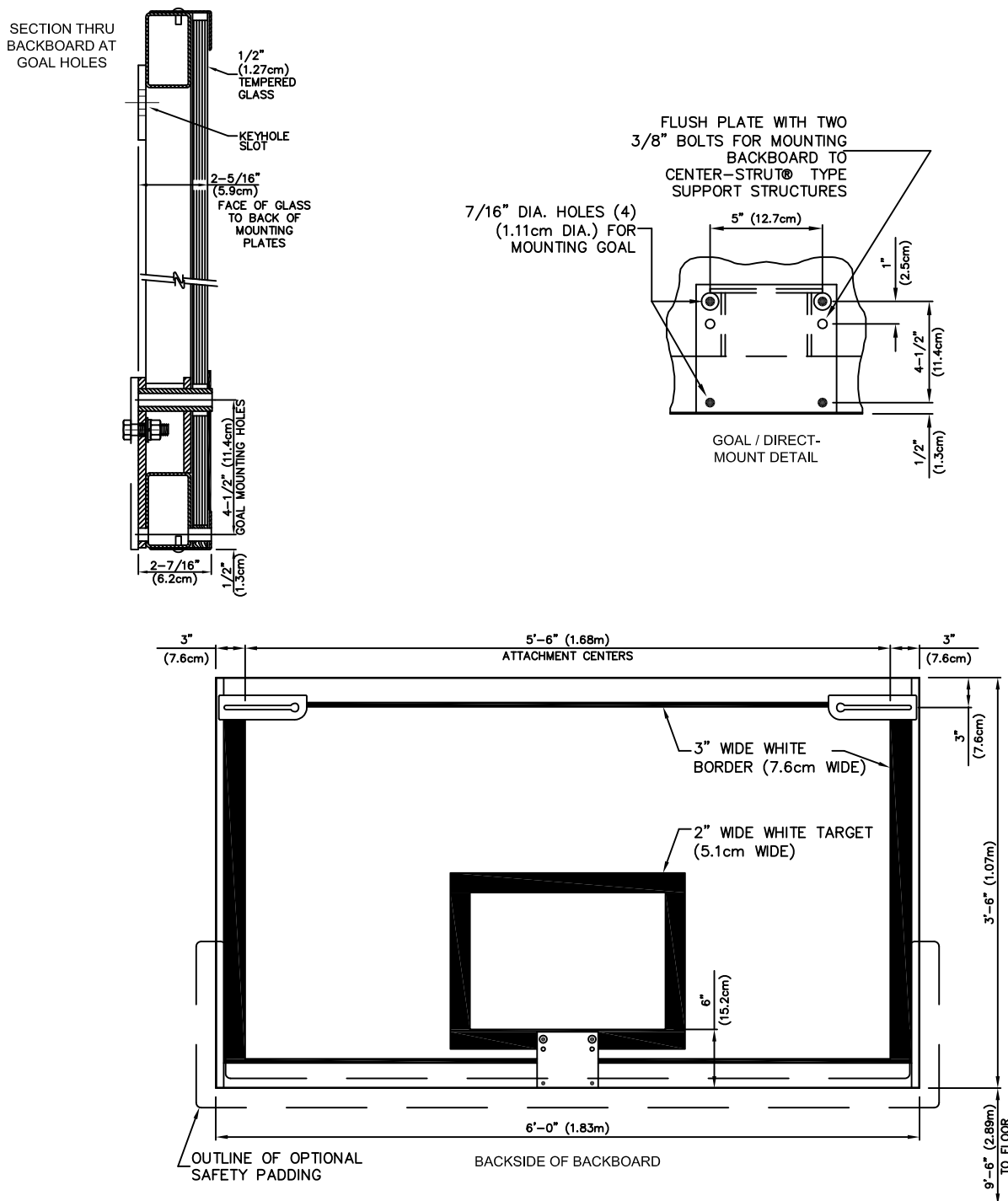


208 - RECTANGULAR GLASS BACKBOARD

GLASS BACKBOARD WITH ALUMINUM-FACED STEEL FRAME UNIT
MEETS ALL NCAA, NFHA, AND PROFESSIONAL REQUIREMENTS



- 208 GLASS WITH ALUMINUM-FACED STEEL FRAME UNIT
- 208L1 BACKBOARD WITH FACTORY INSTALLED LED LIGHTS (SEE B-821L1)
- 208L2 BACKBOARD WITH FACTORY INSTALLED SYNCHRONIZER (SEE B-821L1)
- SEE B-200 FOR GOAL AND PADDING OPTIONS

porter®

888-277-7778 PORTER@PORTERATHLETIC.COM
© COPYRIGHT 2016 PORTER ATHLETIC - ALL RIGHTS RESERVED

PROJECT NUMBER _____

PROJECT NAME _____

porter

WWW.PORTERATHLETIC.COM/FACILITY

BASKETBALL SPECIFICATION SHEET

B-208

8/10/2016

208 - RECTANGULAR GLASS BACKBOARD

GLASS BACKBOARD WITH ALUMINUM-FACED STEEL FRAME UNIT
MEETS ALL NCAA, NFHA, AND PROFESSIONAL REQUIREMENTS

SPECIFICATIONS

Backboard shall be 3'-6" x 6'-0" to meet all NCAA, NFHS and professional requirements.

Backboard frame shall be of a welded, unitized construction fabricated from heavy wall rectangular steel tubing, aluminum-faced for professional appearance. Unitized frame shall be designed for use only on direct goal mounting (Center-Strut®) type support structures.

Unitized frame shall be designed to allow the bottom two goal mount holes to pass beneath the glass section to further alleviate stress on the glass. Backside of goal mount structure is provided with two mounting holes and hardware to independently secure backboard to a direct mount goal feature which relieves all stress and shock on the backboard frame conforming to the latest NCAA Rules. Backboard frame shall be furnished with heavy steel gusset plates in the top two corners incorporating keyhole slots for mounting the backboard to direct-mount type support structures. Rear backboard frame shall be finished in a durable neutral gray powder coated finish.

Glass shall be provided in 1/2" thick, fully tempered (heat-treated) glass section with uniform load and impact strength. Official white border and target area is "fired in" permanently on front side of glass section so that it cannot wear away. Glass section shall be secured to unitized rear frame by means of an attractive, L-shaped brushed aluminum extrusion for optimum durability. Front perimeter frame shall be secured to unitized rear frame with structural truss head rivets. Glass section shall be fitted with shock absorbing neoprene material to cushion and protect the glass section. Goal mounting holes (4) to be on standard 5" (horizontal) x 4-1/2" (vertical) mounting centers (see B-200 for goal options).

WARRANTY

- 208 backboards protected by a limited lifetime warranty when installed on Porter Center-Strut® support systems.

OPTIONAL ITEMS (SEE SPECIFICATION SHEETS FOR DETAIL)

- Padding (see B-200)
- 821208 LED Light Set for 208 board (not installed in factory)
- 8212081 LED Synchronizer (not installed in factory)