

# 01312-400 - OUTDOOR WALL-MOUNTED BACKSTOP

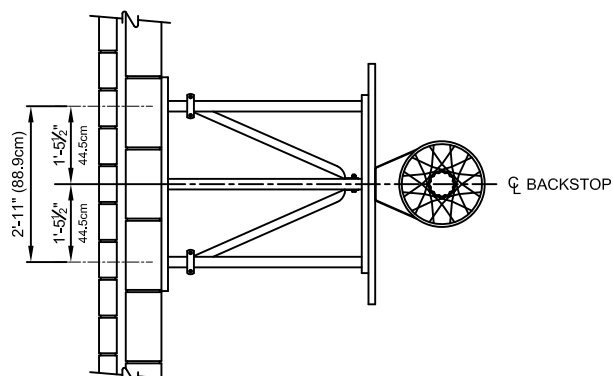
## 4FT EXTENDED OUTDOOR WALL-MOUNTED CENTER-STRUT® BACKSTOP (GALVANIZED)

**Porter**

WWW.PORTERATHLETIC.COM/FACILITY

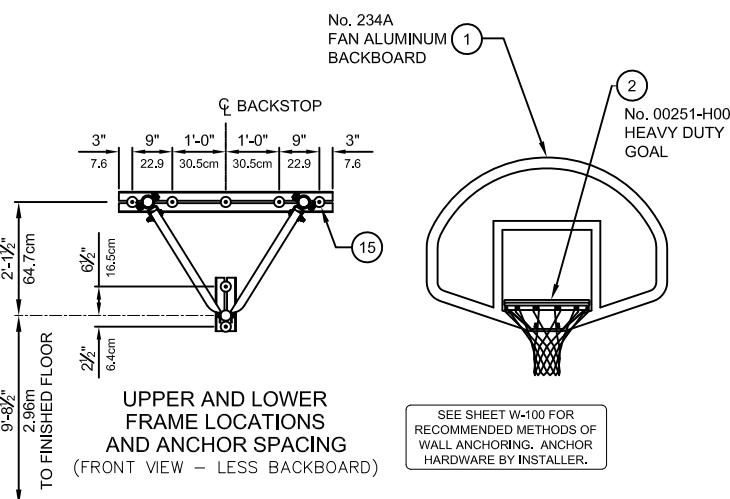
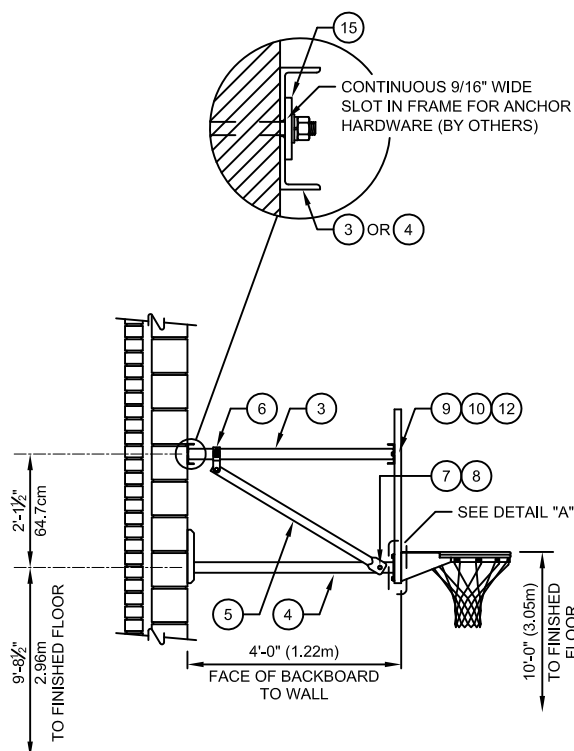
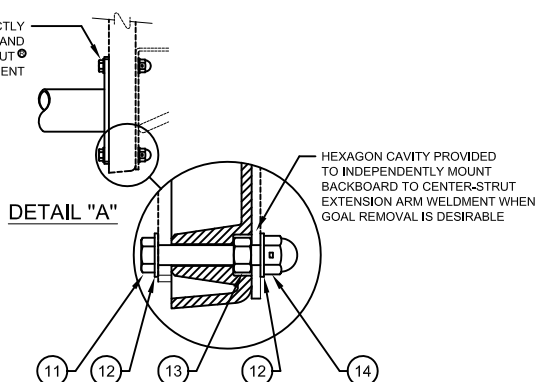
WALLMOUNT SPECIFICATION SHEET

R-1312-F4



PARTS LIST		
No.	QTY.	DESCRIPTION
1	1	234A FAN ALUMINUM BACKBOARD
2	1	00251-H00 HEAVY DUTY GOAL w/NET & HARDWARE
3	1	EXTN 00066 0G0 UPPER EXTENSION WELDMENT
4	1	EXTN 00067 0G0 LOWER EXTENSION WELDMENT
5	2	BRCE 00084 0G0 BRACE
6	2	XHNG 51300 0G0 BRACE HANGER
7	1	HDWE 01149 0P0 1/2" x 3/2" Lg. HEX HEAD CAP SCREW (Grade 5)
8	1	HDWE 03017 0E0 1/2" LOCK NUT
9	4	HDWE 01124 0P0 3/8" x 1" Lg. HEX HEAD CAP SCREW (Grade 5)
10	4	HDWE 04002 0E0 3/8" LOCKWASHER
11	4	HDWE 01207 0P0 3/8" x 2 1/2" Lg. HEX HEAD CAP SCREW (Grade 5)
12	12	HDWE 05004 0E0 3/8" FLATWASHER
13	4	HDWE 03002 0E0 3/8" HEX NUT
14	4	HDWE 03005 0E0 3/8" LOCKING CAP NUT
15	7	HDWE 55011 0E0 1/2" PLATE WASHER

GOAL MOUNTS DIRECTLY THROUGH BACKBOARD AND INTO LOWER CENTER-STRUT EXTENSION WELDMENT



— 01312-400 OUTDOOR WALL-MOUNTED BACKSTOP (EACH)

**Porter**  
888-277-7778 PORTER@PORTERATHLETIC.COM  
© COPYRIGHT 2015 PORTER ATHLETIC - ALL RIGHTS RESERVED

PROJECT NUMBER

PROJECT NAME

10/1/2015

# 01312-400 - OUTDOOR WALL-MOUNTED BACKSTOP

4FT EXTENDED OUTDOOR WALL-MOUNTED  
CENTER-STRUT® BACKSTOP (GALVANIZED)

## SPECIFICATIONS

### PORTER No. 01312-400 CENTER-STRUT® OUTDOOR WALL-MOUNTED BACKSTOP

Backstop shall be wall mounted type with face of back board extended 4'-0" (1.22m) from supporting wall.

Top extension frame shall be fabricated of four (4), 2" (5.08cm) x 1-1/2" (3.81cm) x 3/16" (4.76mm) angles and two (2), 2-3/8" (6.03cm) O.D. pipes, fully welded to form a rigid unitized frame. (Bolt-together horizontal frame assembly shall not be considered equal).

The lower extension shall be fabricated of two (2), 2" (5.08cm) x 1-1/2" (3.81cm) x 3/16" (4.76mm) angles, one (1), 2-3/8" (6.03cm) O.D. pipe, and one (1), 1/4" x 6" x 7" (6.3mm x 15.2cm x 17.7cm) goal plate. Goal shall mount directly through backboard and in to the lower extension Center-Strut® weldment to eliminate any strain on backboard should a player hang on the front mounted goal.

Backstop shall be braced internally with two (2), 1-7/8" (4.8cm) O.D. pipes, bolted directly through the lower extension frame and terminating at a precision die-formed fitting clamped to the lower extension.

All metal parts shall be hot-dipped galvanized after fabrication.

Backstop supplied with No. 234A fan aluminum backboard and No. 00251-H00 heavy-duty double rim goal with a limited lifetime warranty. Refer to pages B-234 and B-251 for specifications on backboard and goal.

**porter**  
WWW.PORTERATHLETIC.COM/FACILITY

WALLMOUNT SPECIFICATION SHEET

R-1312-F4