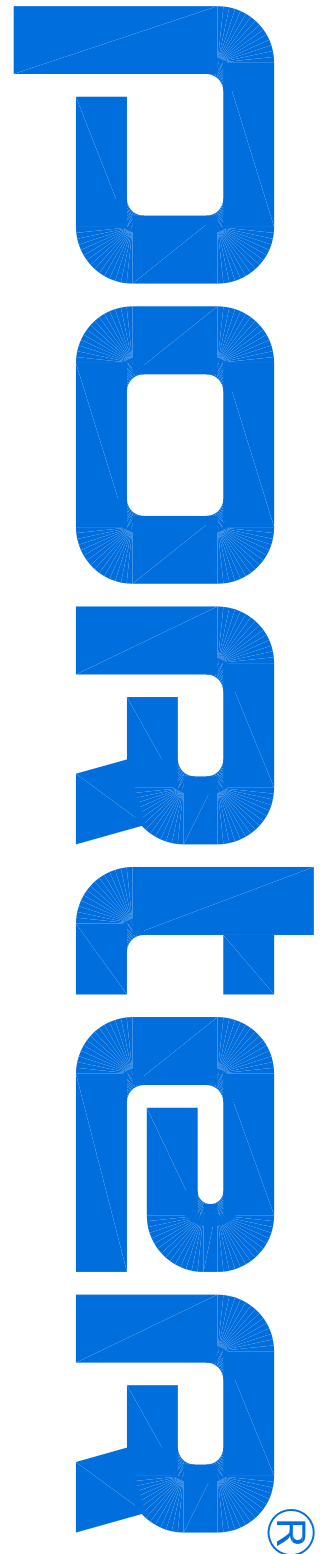


## FLOOR ANCHOR GUIDE

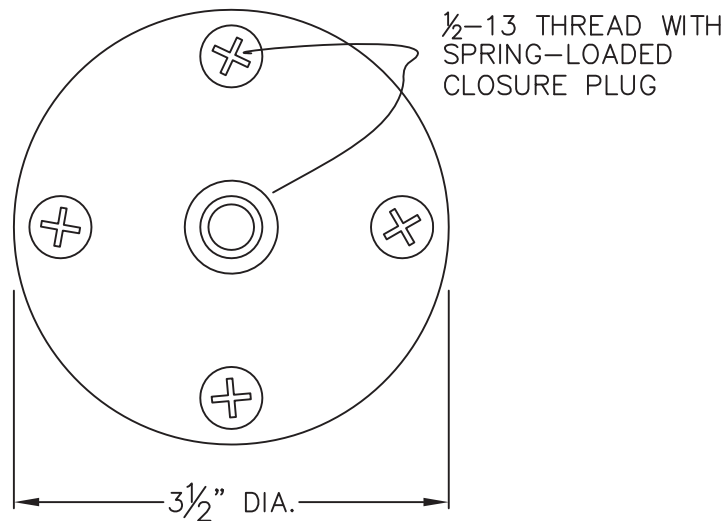
- ☐ **00242-000:** WOOD TYPE FLOOR ANCHOR
- ☐ **00242-100:** THIN CONCRETE FLOOR ANCHOR
- ☐ **00242-900:** PORTABLE TYPE FLOOR ANCHOR
- ☐ **00243-000:** GROUT TYPE FLOOR ANCHOR
- ☐ **00244-000:** SLEEPER TYPE FLOOR ANCHOR
- ☐ **00247-000:** CAST IN SLAB TYPE FLOOR ANCHOR
- ☐ **00247-100:** EXPANSION TYPE FLOOR ANCHOR
- ☐ **00249-000:** CHROME FLOATING TYPE FLOOR ANCHOR
- ☐ **00249-200:** BRASS FLOATING TYPE FLOOR ANCHOR



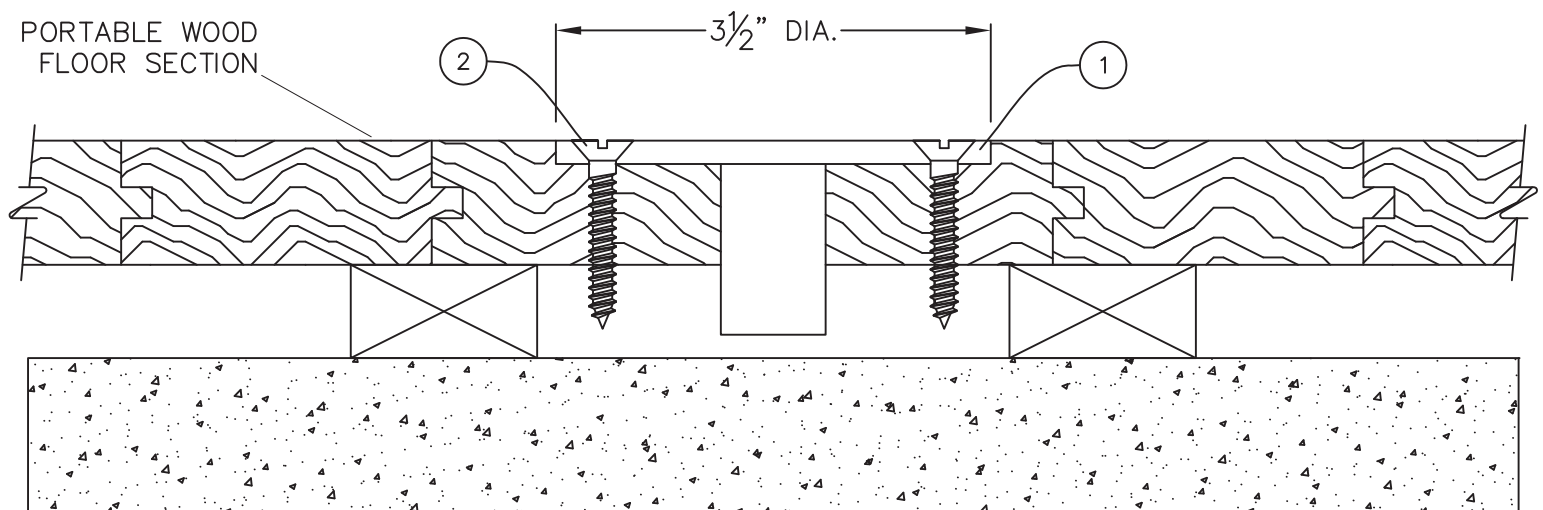
### Installer's Guide to **Porter** Floor Anchors

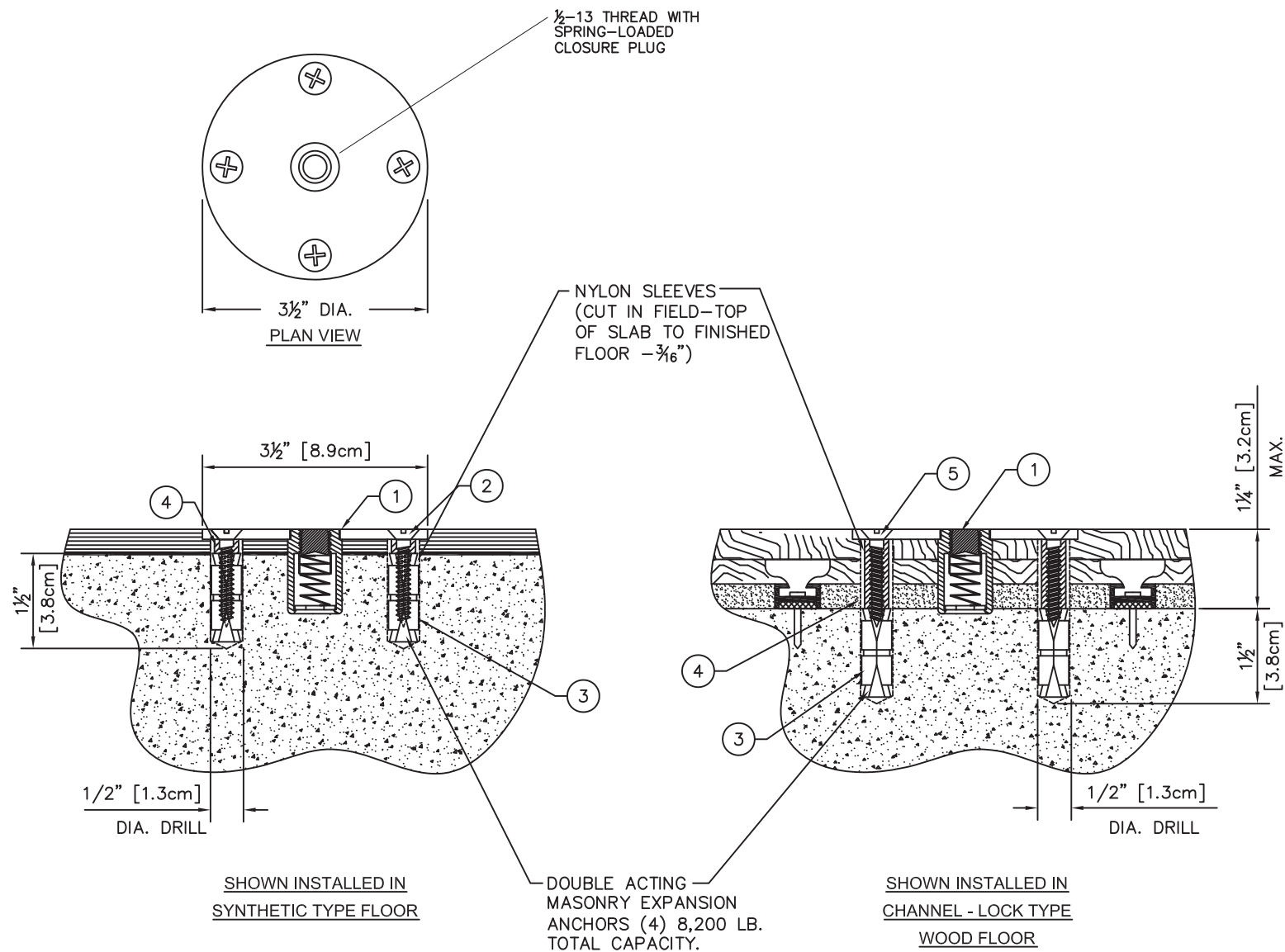
SAVE THIS GUIDE FOR FUTURE USE

PARTS LIST		
No.	QTY.	DESCRIPTION
1	1	PLTE 00018 0C0 FLOOR PLATE ASSEMBLY
2	4	HDWE 06142 0E0 #14 x 1-1/2" Lg. FLAT HEAD SCREW

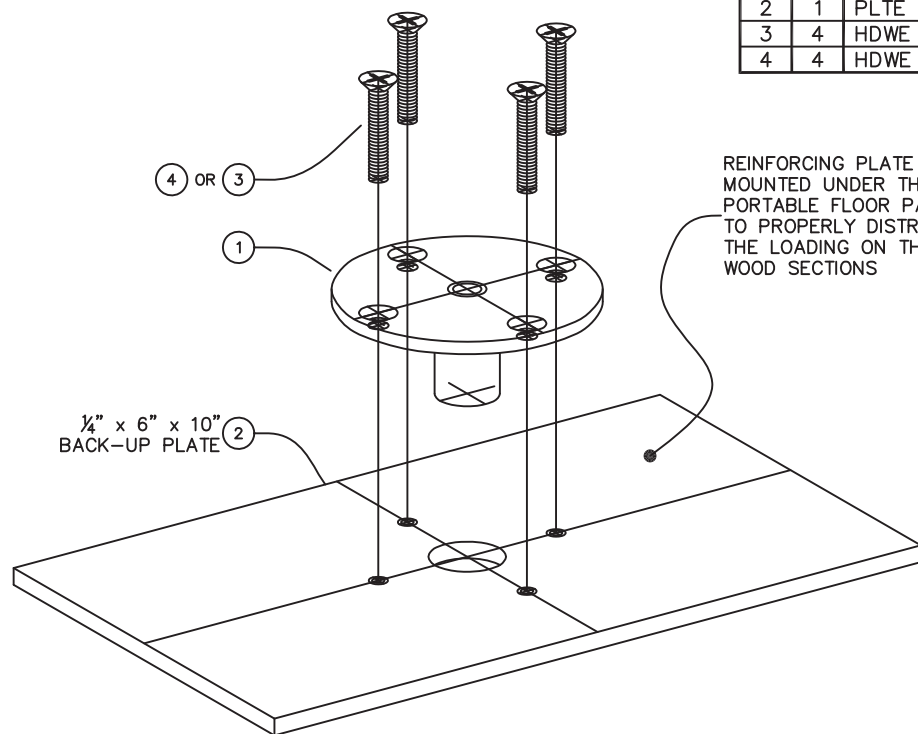


PLAN VIEW



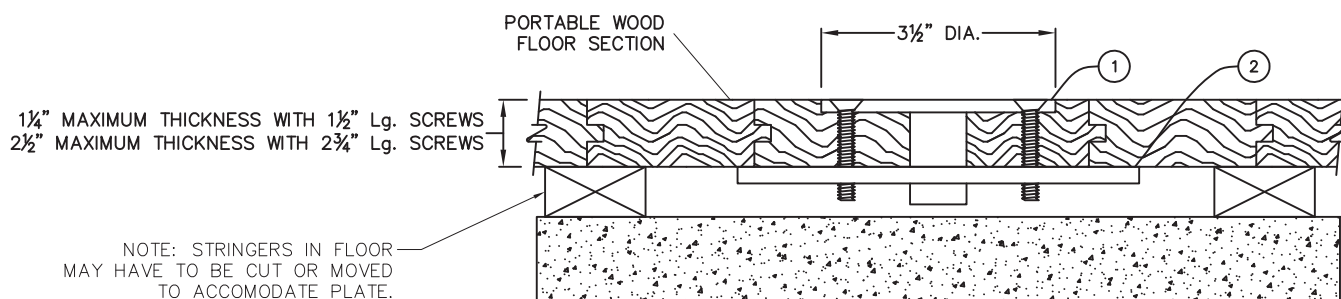
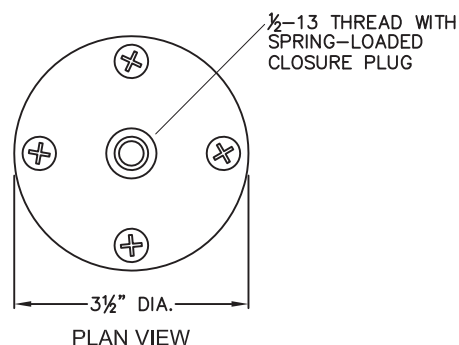


PARTS LIST				
No.	QTY.	DESCRIPTION		
1	1	PLTE 00018 OCO	FLOOR PLATE ASSEMBLY	
2	4	HDWE 06009 OE0	PHILIPS FLAT HEAD SCREW #14 x 1 1/2" Lg.	
3	4	HDWE 58003 000	DOUBLE EXPANSION ANCHORS	
4	4	SLVE 00005 000	NYLON SPACER 3/8" DIA. x 1" Lg.	
5	4	HDWE 06010 OE0	FLAT HEAD SCREW 1/4" DIA. x 2 3/4" Lg.	



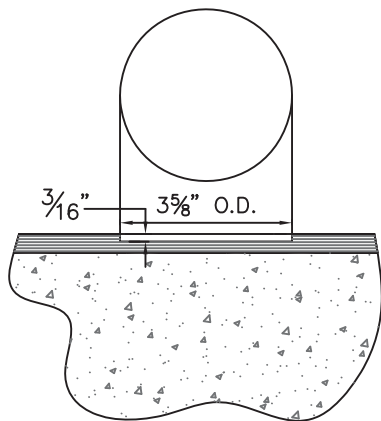
PARTS LIST			
No.	QTY.	DESCRIPTION	
1	1	PLTE 00018 0C0	FLOOR PLATE ASSEMBLY
2	1	PLTE 00143 002	BACK-UP PLATE
3	4	HDWE 06009 0E0	1/4" x 1 1/2" Lg. FLAT HEAD SCREW
4	4	HDWE 06010 0E0	1/4" x 2 3/4" Lg. FLAT HEAD SCREW

REINFORCING PLATE IS MOUNTED UNDER THE PORTABLE FLOOR PANELS TO PROPERLY DISTRIBUTE THE LOADING ON THE WOOD SECTIONS

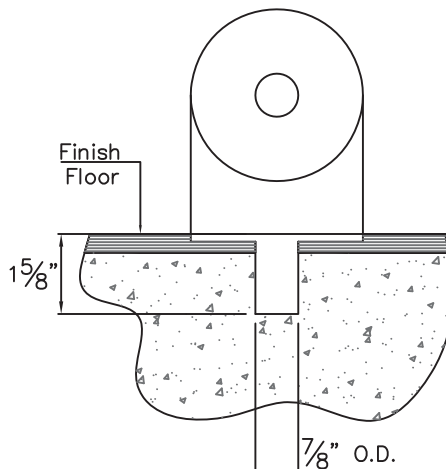


PORTABLE FLOOR ANCHOR TO BE USED WITH PORTABLE BACKSTOPS  
No. 735, 1735, AND 1735M.

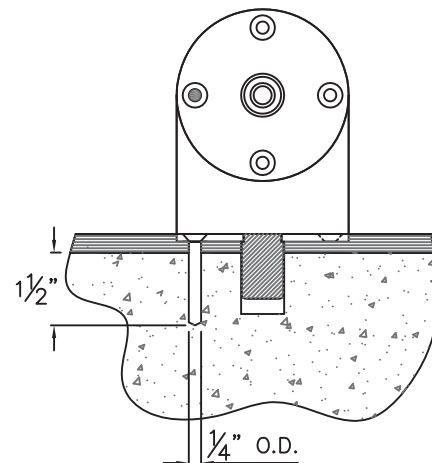
NOTE: AFTER DRILLING EACH HOLE  
THOROUGHLY CLEAN OUT ALL CONCRETE DUST



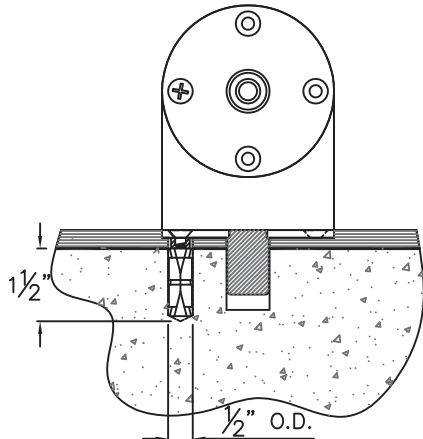
Cut 3 5/8" dia. hole to a depth of 3/16" using circle cutter and router.



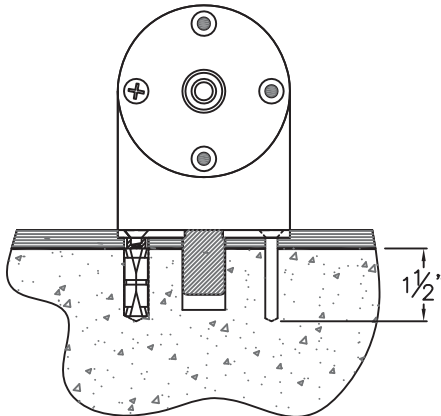
Counterbore or drill in center of larger hole a 7/8" dia. x 1 5/8" deep hole from top of finished floor as shown above.



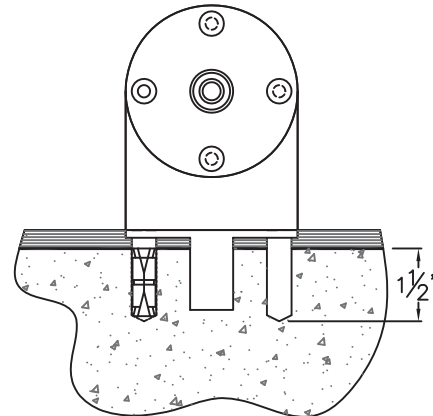
Place floor plate in position. Using one hole of floor plate as a template drill on (1) 1/4" x 1 1/2" deep lead hole as shown above in black.



Remove floor plate from hole. On center of 1/4" guide hole drill 1/2" dia. x 1 1/2" deep from top of slab. Place masonry anchor in hole, cut nylon sleeves as required (Finished floor to top of slab minus 3/16") put floor plate in position and tighten plate with specified screw.

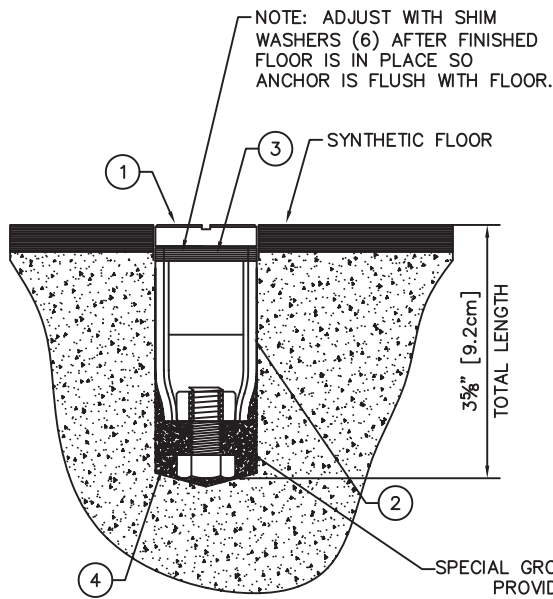
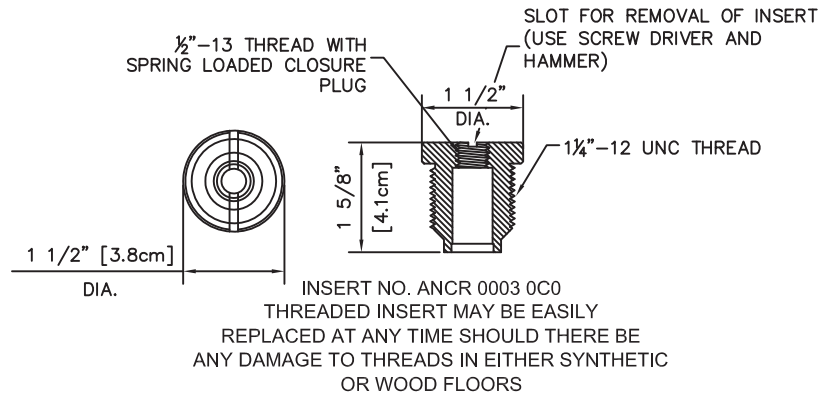


With floor plate in fixed position using remaining three (3) holes of floor plate as a template drill 1/4" dia. x 1 1/2" deep lead holes as shown above in black.

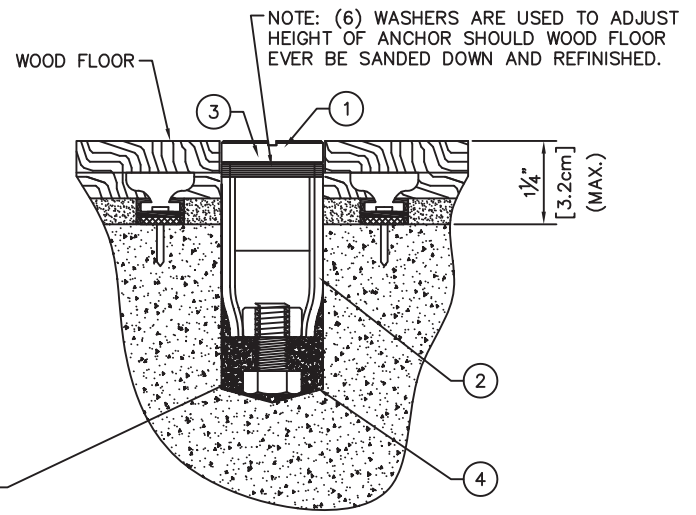


Remove floor plate from hole. On center of the three (3) 1/4" dia. lead holes drill 1/2" dia. x 1 1/2" deep from top of slab. Place masonry anchors in holes, position sleeves and floor plate and tighten plate with specified screws.

PARTS LIST			
No.	QTY.	DESCRIPTION	
1	1	ANCR 00003 0C0	FLOOR ANCHOR INSERT
2	1	ANCR 00002 005	FLOOR ANCHOR BODY
3	6	HDWE 55004 0E0	WAVE SPRING WASHER
4	1	MISC 00018 000	EXPANSION GROUT - 1 Lb.



SHOWN INSTALLED IN  
SYNTHETIC TYPE FLOOR



SHOWN INSTALLED IN WOOD  
AND CHANNEL TYPE FLOORING SYSTEM

**IMPORTANT NOTE:**  
ANCHOR INSTALLED AFTER FINISHED FLOOR IS IN PLACE  
WITH 1 9/16" DIA. HOLE SAW AND 1-1/2" DIA. CARBIDE TIPPED DRILLS.

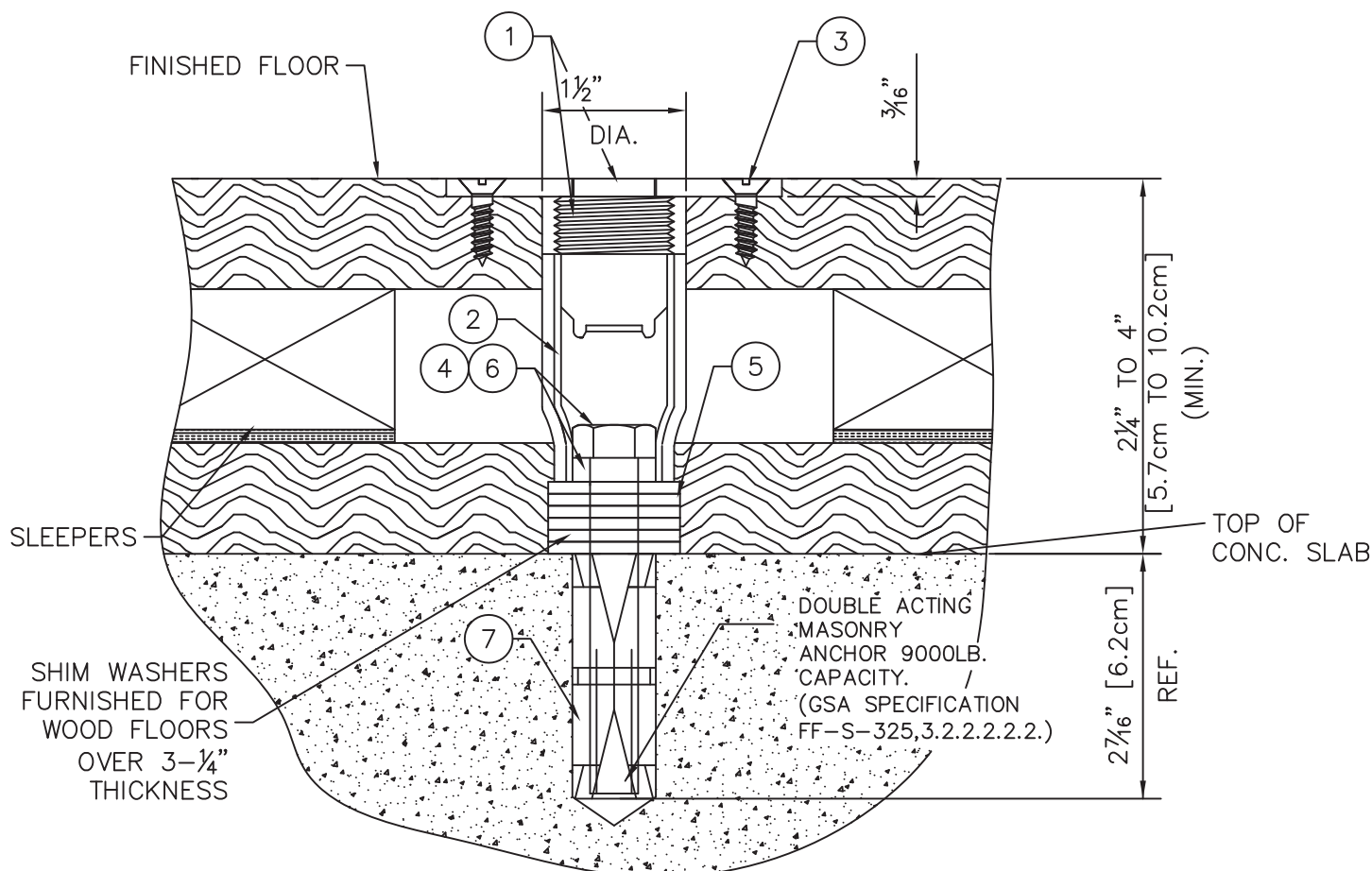
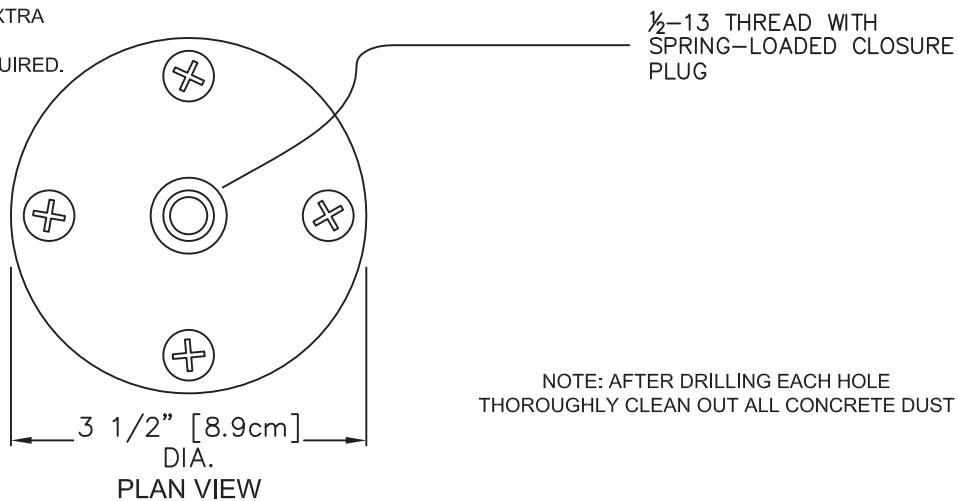
### INSTALLATION NOTE:

ROUTE OUT  $\frac{3}{16}$ " DEEP ( $3\frac{3}{8}$ " DIA.) HOLE IN WOOD FLOOR FOR TOP PLATE. SCREW ASSEMBLY INTO BOTTOM HOUSING (INSTALLED IN CONCRETE SLAB) AND SECURE IN WOOD FLOOR WITH FOUR # 14x $\frac{3}{4}$ " Lg. FLAT HEAD WOOD SCREWS.

\*ON FLOORS WHERE TOTAL THICKNESS OF WOOD FLOOR (TO CONCRETE SLAB) IS LESS THAN  $2\frac{1}{4}$ " USE EITHER #00243-000 OR #00247-100 FLOOR ANCHORS.

\*FOR FLOORS THAT EXCEED 4" IN THICKNESS EXTRA SHIM WASHERS AND LONGER  $\frac{1}{2}$ " HEX HEAD CAP SCREW TO BE PROVIDED BY INSTALLER AS REQUIRED.

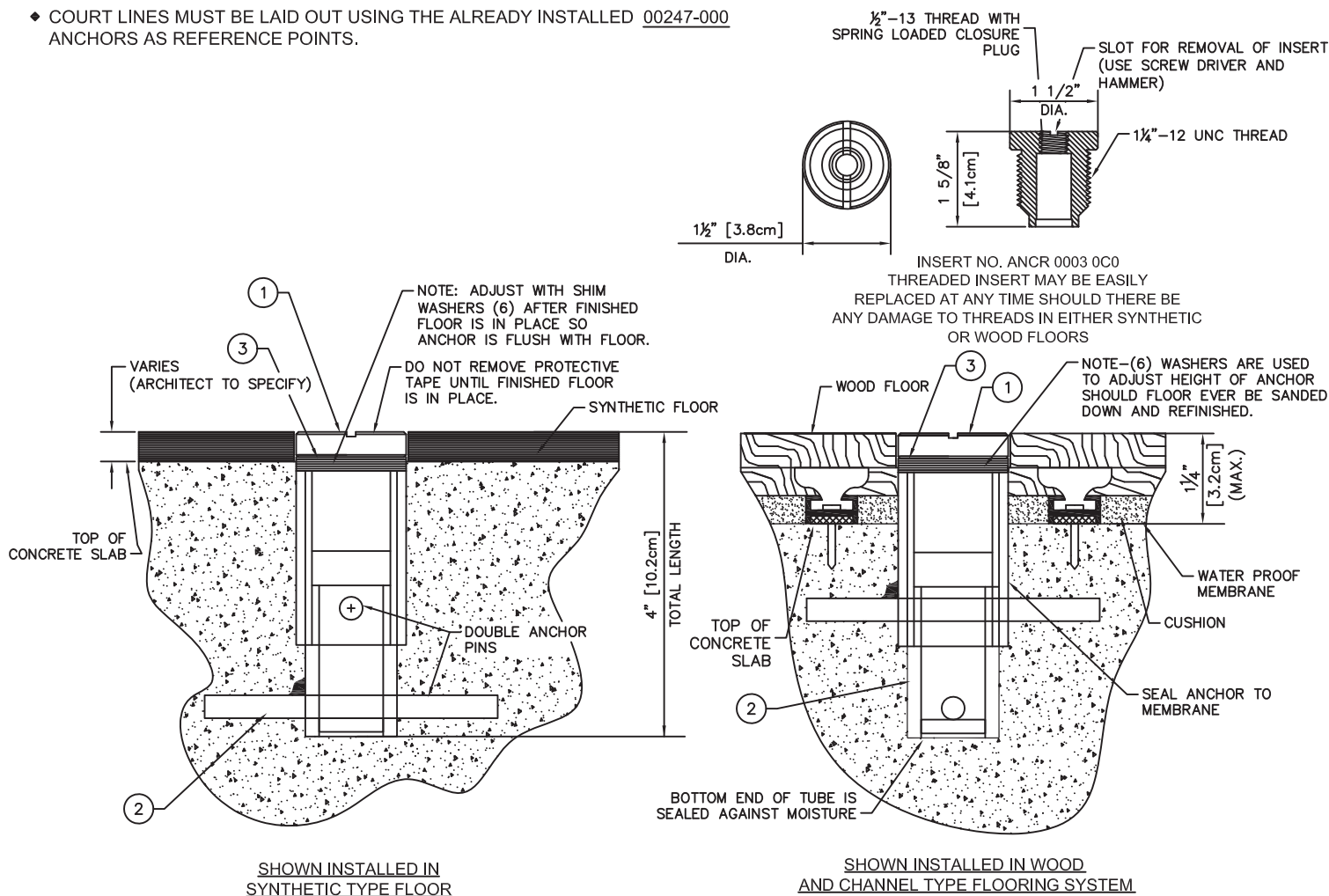
			PARTS LIST
No.	QTY.		DESCRIPTION
1	1	ANCR 00012 0C0	TOP PLATE ASSEMBLY
2	1	ANCR 00023 005	SWAGED PIPE COUPLING
3	4	HDWE 06011 0E0	PHILIPS FLAT HEAD # 14 x $\frac{3}{4}$ " Lg.
4	1	HDWE 01149 0E0	HEX HEAD CAP SCREW $\frac{1}{2}$ " x $3\frac{1}{2}$ " Lg.
5	6	HDWE 05005 0E0	FLATWASHER $\frac{1}{2}$ " DIA.
6	1	HDWE 55005 000	WROUGHT WASHER $\frac{1}{4}$ " THICK -1 $\frac{1}{8}$ " DIA.
7	1	HDWE 58004 000	DOUBLE EXPANSION ANCHOR





IMPORTANT NOTES:

- ◆ FLOOR ANCHOR TO BE CAST IN CONCRETE SLAB WITH PROJECTION EQUAL TO TOTAL FINISHED FLOOR THICKNESS. ARCHITECT TO FURNISH FLOOR THICKNESS AND FLOOR PLAN SHOWING ANCHOR LOCATIONS.  
(ARCHITECT MAY CONTACT PORTER FOR SUGGESTED FLOOR ANCHOR LAYOUT.)
- ◆ FOR FLOOR INSERTS TO BE USED ONLY FOR UPRIGHT PIN LOCATIONS. USE 00247-100 FLOOR INSERT WHICH IS INSTALLED AT EXACT CENTERS REQUIRED AFTER FINISHED FLOOR IS IN PLACE.
- ◆ COURT LINES MUST BE LAID OUT USING THE ALREADY INSTALLED 00247-000 ANCHORS AS REFERENCE POINTS.



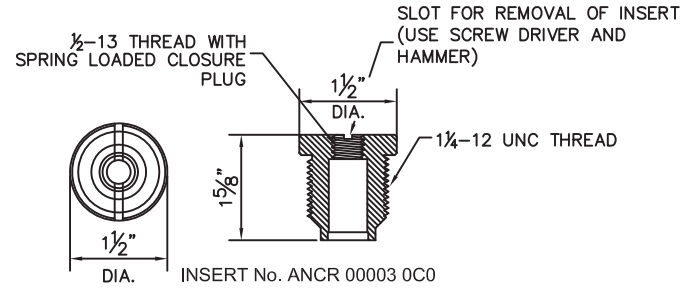
		PARTS LIST		
No.	QTY.	DESCRIPTION		
1	1	ANCR 00003	OC0	FLOOR ANCHOR INSERT
2	1	ANCR 00006	009	EXTENSION WELDMENT
3	6	HDWE 55004	OE0	SHIM WASHER



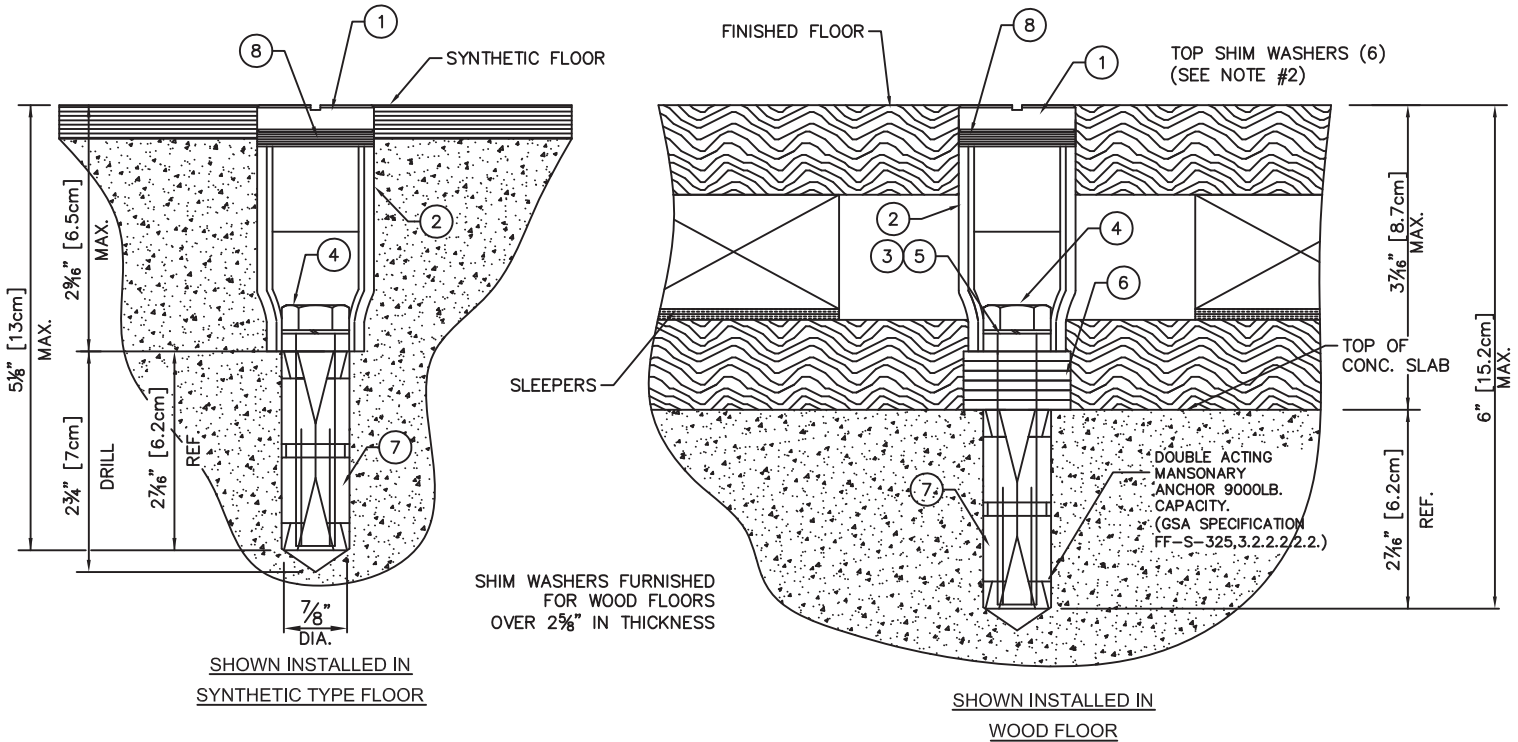
PARTS LIST		
No.	QTY.	DESCRIPTION
1	1	ANCR 00003 0C0 FLOOR ANCHOR INSERT
2	1	ANCR 00023 005 SWAGED PIPE COUPLING
3	1	HDWE 55005 000 WROUGHT WASHER
4	1	HDWE 01149 0E0 HEX HEAD CAP SCREW 1/2" x 3 1/2" Lg.
5	1	HDWE 55006 0E0 LOC-KIT WASHER SET
6	6	HDWE 05005 0E0 FLATWASHER 1/2" DIA.
7	1	HDWE 58004 000 DOUBLE EXPANSION ANCHOR
8	6	HDWE 55004 0E0 WAVE SPRING WASHER

### IMPORTANT NOTES:

- ANCHOR INSTALLED, AFTER FINISHED FLOOR IS IN PLACE, WITH 7/8" AND 1 1/2" DIA. HOLLOW CORE, CARBIDE TIPPED DRILLS.
- TOP SHIM WASHERS MAY BE REMOVED AS REQUIRED SHOULD FLOOR BE SANDED DOWN AND REFINISHED.



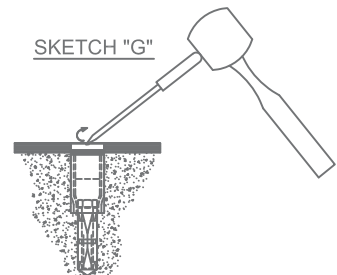
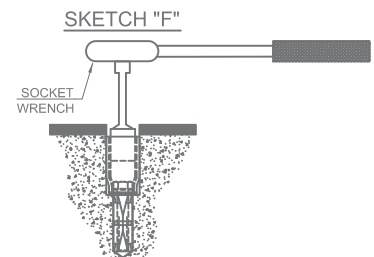
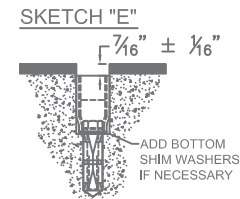
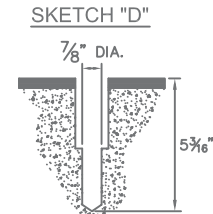
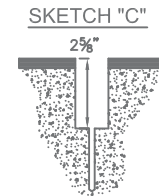
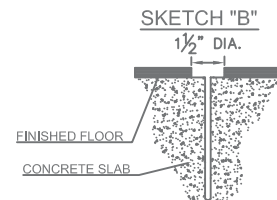
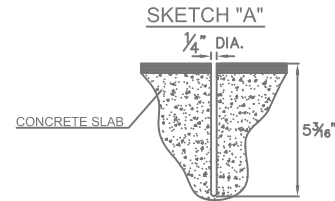
INSERT No. ANCR 00003 0C0  
THREADED INSERT MAY BE EASILY  
REPLACED AT ANY TIME SHOULD THERE BE  
ANY DAMAGE TO THREADS IN EITHER SYNTHETIC  
OR WOOD FLOORS



NOTE: AFTER DRILLING EACH HOLE  
THOROUGHLY CLEAN OUT ALL CONCRETE DUST

## INSTALLATION INSTRUCTIONS FOR INSTALLING 00247-100 FLOOR ANCHOR IN SYNTHETIC FLOORS OR WOOD FLOORS OF LESS THAN $1\frac{5}{8}$ " IN THICKNESS

1. Mark centers of all floor anchors on floor.
2. Cut  $\frac{1}{4}$ " dia. hole to a depth of  $5\frac{3}{16}$ " from finished floor for centering. (sketch A)
3. Cut  $1\frac{1}{2}$ " dia. hole in wood or synthetic flooring to slab depth. (sketch B)
4. Drill  $1\frac{1}{2}$ " dia. Hole into concrete slab to a depth of  $2\frac{5}{8}$ " from finished floor using a carbide tipped core drill. (sketch C)
5. In center of  $1\frac{1}{2}$ " dia. hole, drill  $\frac{7}{8}$ " dia. hole into concrete slab to a depth of  $5\frac{3}{16}$ " from finished floor using a carbide tipped core drill. (sketch D)
6. Remove top insert and all shim washers from anchor assembly.
7. Place anchor assembly (less threaded insert) into hole. Top of anchor must be  $\frac{7}{16}$ " ( $\pm \frac{1}{16}$ ) below finished floor. If dimension is not correct, drill hole deeper or add  $\frac{1}{8}$ " thick bottom spacer washers as required. (sketch E)
8. When insert is properly located at  $\frac{7}{16}$ " below finished floor, tighten  $\frac{1}{2}$ " bolt securely into double acting masonry anchor with socket wrench. (sketch F)
9. Add top (wave type) shim washers as required to bring top of anchor flush with finished floor when tightened into floor anchor body. Tighten insert securely into body by tapping in a clockwise direction with a large screwdriver inserted in one side of groove in top of insert. (If necessary, remove insert and add or remove shim washers as required.) (sketch G)
10. Should floor be refinished, remove insert to prevent damage to top surface. When reinstalling, remove sufficient quantity of shim washers as required to deep top of insert flush with finished floor.



NOTE: AFTER DRILLING EACH HOLE THOROUGHLY CLEAN OUT ALL CONCRETE DUST

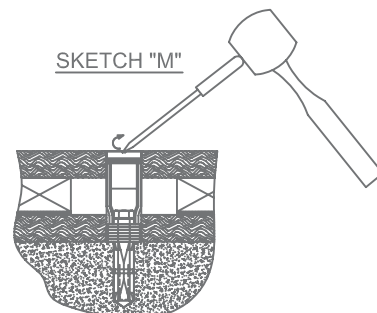
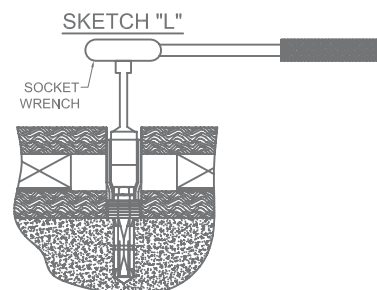
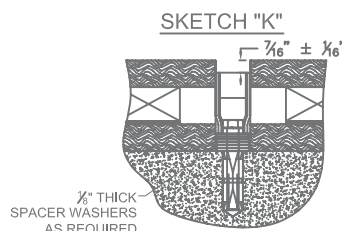
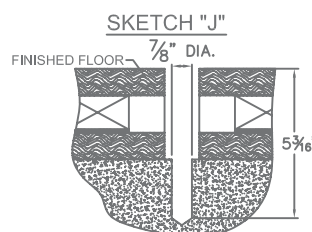
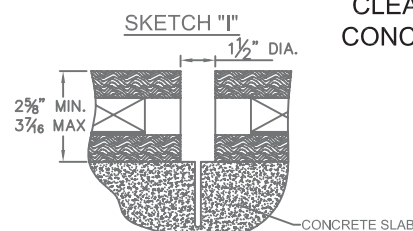
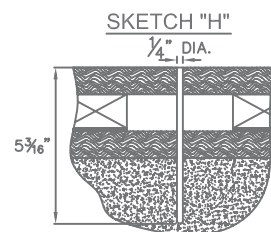
### Installer Note

After installing anchors, give these instructions to the customer for reference.

Top threaded insert may be ordered as part No. ANCR000030C0 insert assembly in the event of any damage.

INSTALLATION INSTRUCTIONS FOR INSTALLING 00247-100 FLOOR ANCHOR IN WOOD FLOORS OF MORE THAN  $2\frac{5}{8}$ " IN THICKNESS ( $3\frac{7}{16}$ " MAXIMUM THICKNESS)

1. Mark centers of all floor anchors on floor.
2. Cut  $\frac{1}{4}$ " dia. hole to a depth of  $5\frac{3}{16}$ " from finished floor for centering. (sketch H)
3. Cut  $1\frac{1}{2}$ " dia. hole to slab depth. (sketch I)
4. In center of  $1\frac{1}{2}$ " dia. Hole, drill  $\frac{7}{8}$ " dia. hole into concrete slab to a depth of  $5\frac{3}{16}$ " from finished floor using a carbide tipped core drill. (sketch J)
5. Remove top insert and all shim washers from anchor. Add  $\frac{1}{8}$ " thick spacer washers (between floor anchor body and masonry anchor) to compensate for any floors over  $2\frac{5}{8}$ " in thickness. Top of anchor must be  $\frac{7}{16}$ " ( $\pm \frac{1}{16}$ ") below finished floor. If dimension is not correct (after installing and checking) add or remove spacer washers as required. (sketch K)
6. When insert is properly located at  $\frac{7}{16}$ " below finished floor, tighten  $\frac{1}{2}$ " bolt securely into double acting masonry anchor with socket wrench. (sketch L)
7. Add top (wave type) shim washers as required to bring top of anchor flush with finished floor when tightened into floor anchor body. Tighten insert securely into body by tapping in a clockwise direction with a large screwdriver inserted in one side of groove in top of insert. (If necessary, remove insert and add or remove shim washers as required.) (sketch M)
8. Should floor be refinished, remove insert to prevent damage to top surface. When reinstalling, remove sufficient quantity of shim washers as required to deep top of insert flush with finished floor.



NOTE: AFTER DRILLING EACH HOLE THOROUGHLY CLEAN OUT ALL CONCRETE DUST

## Installer Note

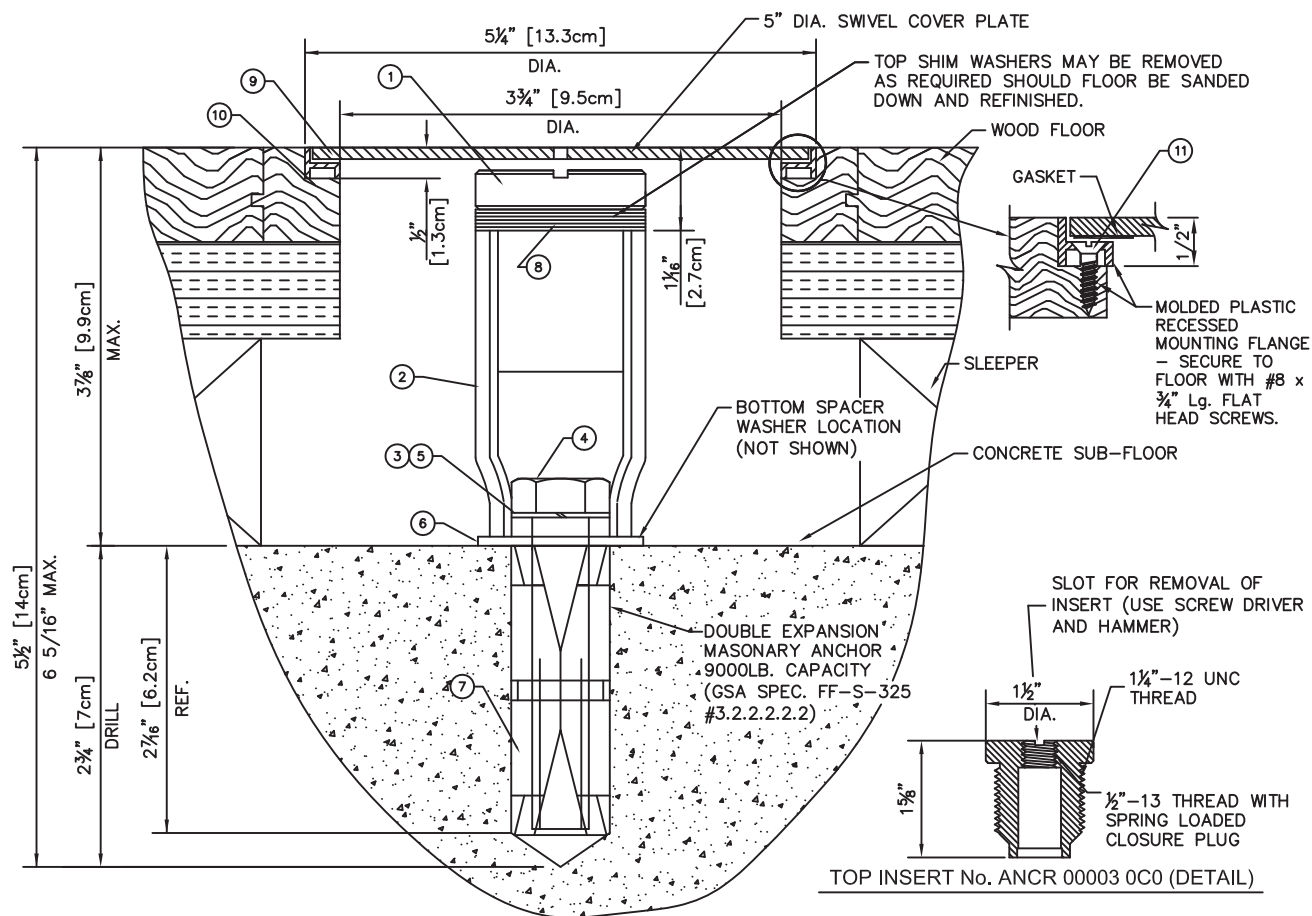
After installing anchors, give these instructions to the customer for reference.

Top threaded insert may be ordered as part No. ANCR000030C0 insert assembly in the event of any damage.

PARTS LIST			
No.	00249 000	00249 200	DESCRIPTION
	QTY.	QTY.	
1	1	1	ANCR 00003 0C0 FLOOR ANCHOR INSERT
2	1	1	ANCR 00023 005 SWAGED PIPE COUPLING
3	1	1	HDWE 55005 000 WROUGHT WASHER
4	1	1	HDWE 01149 0E0 HEX HEAD CAP SCREW 1/2" x 3 1/2" Lg.
5	1	1	HDWE 55006 0E0 LOC-KIT WASHER SET
6	6	6	HDWE 05005 0E0 FLATWASHER 1/2" DIA. (NOT SHOWN)
7	1	1	HDWE 58004 000 DOUBLE EXPANSION ANCHOR
8	6	6	HDWE 55004 0E0 WAVE SPRING WASHER
9	1	1	COVR 00003 0C0 COVER PLATE ASSEMBLY - CHROME
9	1	1	COVR 00003 0B0 COVER PLATE ASSEMBLY - BRASS
10	2	2	MISC 00158 000 COLLAR GASKET
11	3	3	HDWE 06100 0E0 PHILIPS FLATHEAD SCREW #8 x 3/4" Lg.
12	1	1	HDWE 00736 100 COVER REMOVAL KEY (NOT SHOWN)

## INSTALLATION INSTRUCTIONS:


1. ANCHOR TO BE INSTALLED AFTER FLOOR IS IN PLACE. LOCATE POSITION OF ANCHOR ON FLOOR.
2. ROUTE OUT 5¼" x ½" DEEP HOLE IN FLOOR FOR COVER PLATE. PLACE THE 5¼" DIA. ALUM. RING IN CAVITY AND MARK THE 3¾" DIA. INSIDE CIRCLE. ROUTE OUT THIS CIRCLE THRU THE WOOD FLOOR TO THE CONCRETE SLAB BELOW.
3. IN CENTER OF COVER PLATE DRILL A 7/8" DIA. HOLE INTO CONCRETE SLAB TO A DEPTH OF 5 7/16" FROM FINISHED FLOOR USING A CARBIDE TIPPED HOLLOW CORE DRILL. IF THE TOTAL WOOD FLOOR THICKNESS IS LESS THAN 3 1/16" DRILL A 1½" DIA. HOLE IN CONCRETE SUB-FLOOR FOR FLOOR ANCHOR BODY TO BE INSTALLED AT THE REQUIRED DEPTH. REMOVE TOP INSERT AND SHIM WASHERS FROM ANCHOR ASSEMBLY.
4. PLACE ANCHOR ASSEMBLY (LESS TOP INSERT) INTO HOLE. TOP OF ANCHOR MUST BE 1 1/16" (± 1/16") BELOW FINISHED FLOOR. USE BOTTOM SPACER WASHERS AS REQUIRED.
5. WHEN INSERT IS PROPERLY LOCATED, TIGHTEN ½" BOLT SECURELY INTO DOUBLE ACTING MASONARY ANCHOR WITH SOCKET WRENCH.
6. ADD TOP (WAVE TYPE) SHIM WASHERS AS REQUIRED TO BRING TOP OF ANCHOR TO WITHIN ¼" OF FINISHED FLOOR WHEN TIGHTENED INTO FLOOR ANCHOR BODY. TIGHTEN INSERT SECURELY INTO BODY BY TAPPING IN A CLOCKWISE DIRECTION WITH LARGE SCREWDRIVER INSERTED IN ONE SIDE OF GROOVE.
7. PLACE COVER PLATE IN POSITION IN 5¼" DIA. CAVITY AND SECURE IN PLACE WITH 8 ¾" FLAT HEAD SCREWS PROVIDED.



## NOTES

## NOTES

## NOTES

 **WARNING:** Cancer and Reproductive Harm –  
For more information go to [www.p65warnings.ca.gov](http://www.p65warnings.ca.gov)

F



## INSTALLER NOTES



601 Mercury Drive, Champaign, IL U.S.A., 61822  
[www.porterathletic.com](http://www.porterathletic.com)  
(888) 277-7778

SAVE THIS GUIDE FOR FUTURE USE