

00244-000 - FLOOR ANCHOR

SLEEPER-TYPE ADJUSTABLE FLOOR PLATE

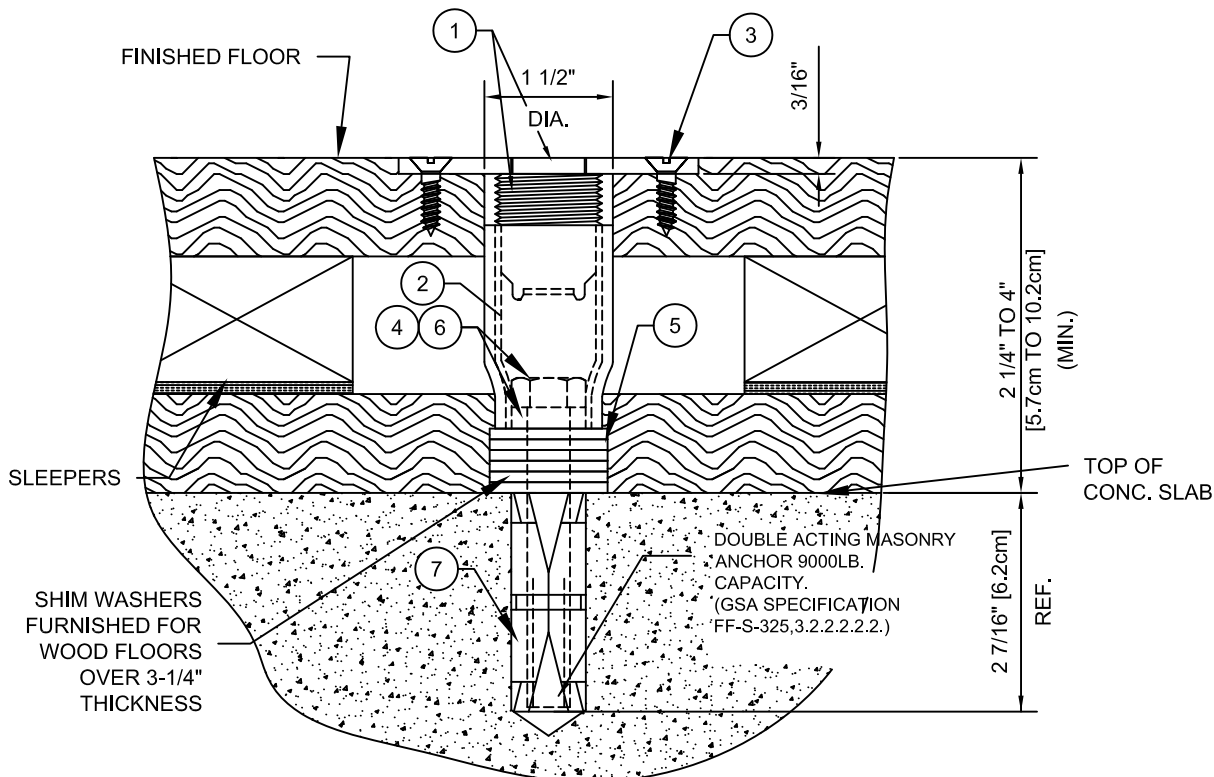
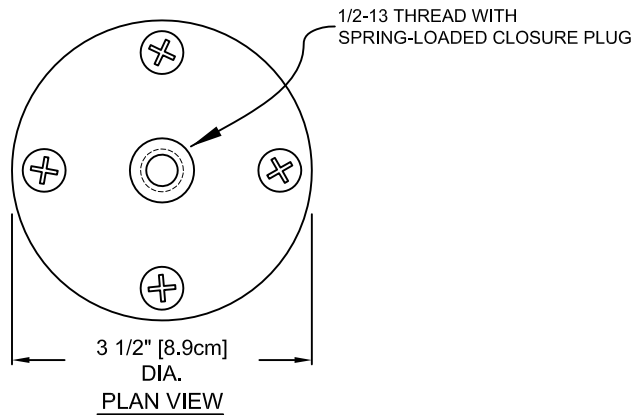
INSTALLATION NOTE:

ROUTE OUT 3/16" DEEP (3 1/2" DIA.) HOLE IN WOOD FLOOR FOR TOP PLATE. SCREW ASSEMBLY INTO BOTTOM HOUSING (INSTALLED IN CONCRETE SLAB) AND SECURE IN WOOD FLOOR WITH FOUR # 14x3/4" Lg. FLAT HEAD WOOD SCREWS.

*ON FLOORS WHERE TOTAL THICKNESS OF WOOD FLOOR (TO CONCRETE SLAB) IS LESS THAN 2 1/4" USE EITHER #00243-000 OR #00247-100 FLOOR ANCHORS.

*FOR FLOORS THAT EXCEED 4" IN THICKNESS EXTRA SHIM WASHERS AND LONGER 1/2" HEX HEAD CAP SCREW TO BE PROVIDED BY INSTALLER AS REQUIRED.

PARTS LIST		
No.	QTY.	DESCRIPTION
1	1	ANCR 00012 0C0 TOP PLATE ASSEMBLY
2	1	ANCR 00023 005 SWAGED PIPE COUPLING
3	4	HDWE 06011 0E0 PHILIPS FLAT HEAD # 14 x 3/4" Lg.
4	1	HDWE 01149 0P0 HEX HEAD CAP SCREW 1/2" x 3 1/2" Lg.
5	6	HDWE 05005 0E0 FLATWASHER 1/2" DIA.
6	1	HDWE 55005 000 WROUGHT WASHER 1/4" THICK -1 1/8" DIA.
7	1	HDWE 58004 000 DOUBLE EXPANSION ANCHOR



- 00244-000 SLEEPER-TYPE ADJUSTABLE FLOOR PLATE

Porter®

888-277-7778 PORTER@PORTERATHLETIC.COM
© COPYRIGHT 2014 PORTER ATHLETIC - ALL RIGHTS RESERVED

PROJECT NUMBER

PROJECT NAME

Porter

WWW.PORTERATHLETIC.COM/FACILITY

BASKETBALL SPECIFICATION SHEET

G-244

5/21/2014

00244-000 - FLOOR ANCHOR

SLEEPER-TYPE ADJUSTABLE FLOOR PLATE

SPECIFICATIONS

PORTER No. 00244-000 SLEEPER TYPE FLOOR PLATE
(For installation in wood over concrete type floors where total thickness of
wood floor exceeds 2-1/4")

Floor plate shall be designed to prevent movement of wood floors when installed.

Anchor shall consist of three (3) basic sections – top plate assembly, lower body assembly and a double acting masonry anchor.

Top plate assembly to be 3/16" thick x 3-1/2" diameter with 1/2-13 UNC internal threaded insert. Internal threads shall be protected by a spring-loaded closure plug. Underside of plate to incorporate an external threaded body assembly for securing into internal thread on lower body assembly. Top plate assembly to have countersunk holes for attaching into wood flooring with four (4) #14 x 3/4" lg. flat head wood screws.

Lower body shall be 1-1/2" in diameter with 1-1/4-12 UNC internal thread for securing top plate assembly to the concrete sub-floor to prevent movement of the wood floor. Body shall be zinc plated.

Lower body shall be secured into a double acting, expansion type masonry anchor by means of a 1/2" diameter plated machine bolt. Masonry anchor shall provide a 9000 pound pullout strength when properly installed (G.S.A. Specification FF-S-325, #3.2.2.2.2. which tests to a 9000 pound pullout when installed in concrete with a minimum of 3,000 P.S.I. compression strength.)

Shim washers (6) shall be provided for spacing between bottom of body and concrete slab when required.