

# CENTER STRUT® MOUNTING INSTALLATION INSTRUCTIONS

*THE MEDALLION™*

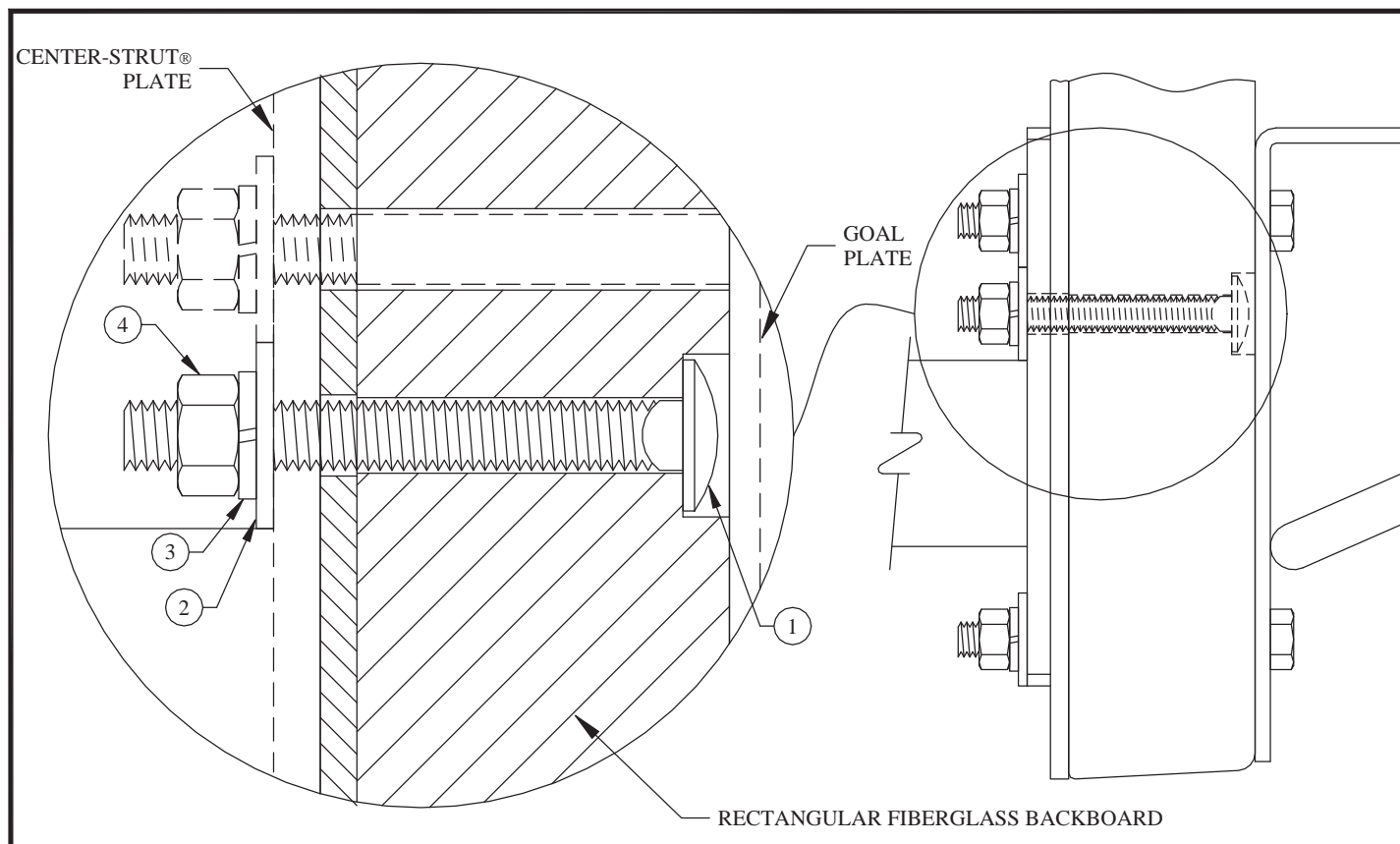
## *RECTANGULAR FIBERGLASS BACKBOARD*

*No. 216*

### PARTS LIST

Item No.	Qty.	Part Number	Description	Item No.	Qty.	Part Number	Description
1	2	HDWE 02068 0E0	3/8" x 3" Lg. Carriage Screw – Grade 5	3	2	HDWE 04002 0E0	3/8" Lock Washer
2	2	HDWE 05004 0E0	3/8" Flatwasher	4	2	HDWE 03002 0E0	3/8" Hex Nut

1. Assemble rectangular fiberglass backboard to Center-Strut® plate using two 3/8" x 3" lg. carriage bolts (1) (from front of backboard), two 3/8" flatwashers (2), two 3/8" lock washers (3) and two 3/8" hex nuts (4) as shown. Using a torque wrench, fully tighten hardware to between 225 and 250 inch pounds of torque – this will secure backboard to lower structure, allowing for separate installation or removal of goal. **Note: This feature cannot be utilized with Model No. 176 outdoor backstops.**
2. Assemble goal to backboard using the hardware provided with goal. Note: Goal can be removed without disturbing backboard, by removing the goal attachment hardware
3. Install upper support bracing to the backboard's top 3/8"-16 x 1" deep threaded inserts as shown in separate instructions. **Note: Tighten hardware to between 225 and 250 inch pounds of torque.**



**porter®**

www.porterathletic.com  
(888) 277-7778

**WARNING:** This product can expose you to Titanium Dioxide, which is known to the State of California to cause cancer. For more information go to [www.p65warnings.ca.gov](http://www.p65warnings.ca.gov).

SAVE THESE INSTRUCTIONS FOR FUTURE USE