

TRACK & FIELD

GILL®
ATHLETICS

2020

GILLATHLETICS.COM 800.637.3090





**Quality.
Commitment.
Innovation.**

Harry L. Gill

GILL[®]
ATHLETICS

Since 1918, Gill Athletics[®] has been empowering coaches with innovative equipment that helps develop track athletes and elevates the sport across the globe.

WHAT'S INSIDE



04



22



36



44



104



79

02 JUMPS

- 04 Landing Systems
- 10 Standards
- 14 Box Collars, Base Pads & Platforms
- 16 Raised Runways & Pit Garages
- 18 Crossbars & Accessories
- 22 Vaulting Poles
- 28 Vault Accessories

30 SPRINTS & HURDLES

- 32 Starting Blocks
- 36 Hurdles
- 39 Hurdle Accessories

40 THROWS

- 42 Discus
- 44 Hammers & Shots
- 46 Throw Accessories
- 48 Javelins
- 57 Implement Accessories

58 MEETS

- 60 Displays
- 62 Measuring Devices & Cameras
- 64 Track Accessories & Maintenance
- 70 Cross Country & Impact Tents

72 TRAINING

- 74 Plyometrics
- 76 Agility Training
- 78 Speed Development
- 81 Core Strength
- 82 Bodyweight Training
- 84 Weight Bars & Plates
- 86 Jump Training & Testing
- 88 Flexibility & Rehab

90 FACILITIES

- 92 Takeoff Boards & Curbing
- 94 Sand Pit Forms & Covers
- 96 Steeplechase
- 98 Vault Boxes & Implement Barriers
- 100 Circles & Toeboards
- 104 Hammer Cages
- 108 Discus Cages
- 112 Discus, Shot & Indoor Cages
- 114 VersaCom Boxes & Track Shelter
- 116 Ballstops

2020 Litalia Sports Group, Inc. Gill Athletics, PowerMax, Pacer are all registered trademarks of Gill Athletics, Inc. Gill Essentials, Maximus, SafetyMax, AGX, Pacer One, PacerFXV, Pacer Composite, Continuum, Fusion, Carbon 1, Hollowood Star, Orbiter, OTE, Tru-Flight, T2-Fiber, Tufmesh Plus, Duralife, are all trademarks of Gill Athletics, Inc. NCAA is a registered trademark of The National Collegiate Athletic Association.

CHECK OUT OUR GREAT **NEW** PRODUCTS

Featured here and online at: www.GILLATHLETICS.com / **NewProducts**

Prices effective from October 1, 2019 through September 30, 2020

FLY

FIRST

CLASS.



COUNTERVAIL

TRACK
CHAMPION

LANDING SYSTEMS

LANDING SYSTEMS

For over 100 years, Gill Athletics has been the leader of innovation in the sport of track & field. Our pole vault and high jump landing systems are engineered by collegiate athletes, professionals, and coaches. We are honored that the NCAA® and NFHS® have both partnered with us as we work together to elevate each athlete's journey and deliver a first-class experience.

DOUBLE FRONT SYSTEMS

Available on G4, G6, and AGX M4. Call for Details.



SIDE CARABINER CONNECTION:

Top Pad is connected to base pads with carabiner side attachments, eliminating any obstruction on top of the pit. This exclusive attention to detail provides an obstruction-free landing area with athletes' safety in mind.



OPTIMAL PIT ENTRY ANGLE:

An ASTM approved vault box collar changes the slope of the tri-slant area when vaulting poles rotate. Gill's thoughtful pit entry design accounts for the box collar's effect by featuring a vaulter friendly angle.

GILL LANDING SYSTEMS FEATURES*

Top Pads

EDGE-TO-EDGE TOP PAD: Aesthetic and functional design eliminates spike contact with base units and unevenness at the edge of the pit. This Gill exclusive feature will increase the life of your new pit and improve safety near the edges.

TUFMESH PLUS™ CASING: Using exclusive 17 x 11 1000 denier material increases the life of your top pad and stands up to repeated use better than any other on the market.

2" DURALIFE™ FOAM: Soft and durable foam creates confidence in every practice. Coaches can teach with assurance because of this industry leading design.

V-LOOP VINYL STRAP: Designed to evenly distribute the force from the athlete's landing, V-Loop straps eliminate tears compared to traditionally designed pits that put undue stress on the seams.

REVERSIBLE: Extend the life of your pit, Gill's top pads are designed to use either side safely and easily.

Vinyl Base Units

ALL-VINYL BASE: Exclusive to Gill landing systems, this unique design keeps water out of your pit better than old-school mesh top units used by the competition. To extend the life of your pit you keep water out of the foam. Gill's all-vinyl design gets results.

COMPLETE INTERCHANGEABILITY: Reversible sections for maximum interchangeability. This adds years to the life of your pit by maximizing the usage and size of the athlete's landing area.

QUADRUPLE DURALIFE LAYER FOAM: Athletes need to know they are landing safely and comfortably. Gill's new QUADRUPLE Duralife foam is 25% softer than others yet with firmness necessary for the safest landings.

DUAL COATED VINYL: Evenly distributed 1000 x 1000 denier polyester fabric is bonded on both sides with 18oz knife-coated PVC vinyl. This exclusive fabric design eliminates vinyl delamination seen in other pits after years of use. This creates the most durable casing on the market that is lighter than the other pits.

STITCHING: Gill's entire landing system is stitched with the industry's strongest 210 bonded polyester thread. Simply put, your new Gill pit comes triple stitched with the toughest thread in the industry to hold up to high volume practices.

GRIP STRIP FASTENING SYSTEM: A pit is safest when constructed as an integrated system. Gill's Grip Strip Fastening System will keep your base sections functioning as one unit season after season.

ECO-SMART COMPRESS PACKS: Gill Athletics cares about the environment and your budget. All landing systems are expertly packed and shipped utilizing Compress-Pack shipping, reducing freight volume lowering fuel consumption and shipping costs. Pits restore to original size and shape minutes after unpacking.

12 YEAR WARRANTY: A long-term warranty is only as dependable as the company standing behind it. And after 100 years, you can count on Gill to stand behind your landing system for years to come. If any failure occurs in the first 12 years, under normal use and care, we will repair or replace the damaged part. Essentials line includes 5 year warranty.

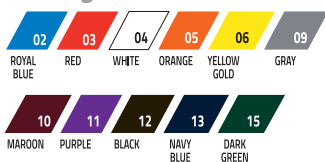
CUSTOM COLOR AND GRAPHICS: Choose from over 100 unique vinyl casing and top pad color combinations offered at NO EXTRA CHARGE! Select your vinyl casing (xx) and top pad (yy) color combination. Add distinction with multi-color graphics on the top pad, weather cover, or both.

**Features May Exclude Essentials Systems*



CUSTOMIZABLE LANDING SYSTEMS

Casing (XX)



Top Pad (YY)



CUSTOM GRAPHIC PRINTING

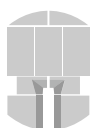
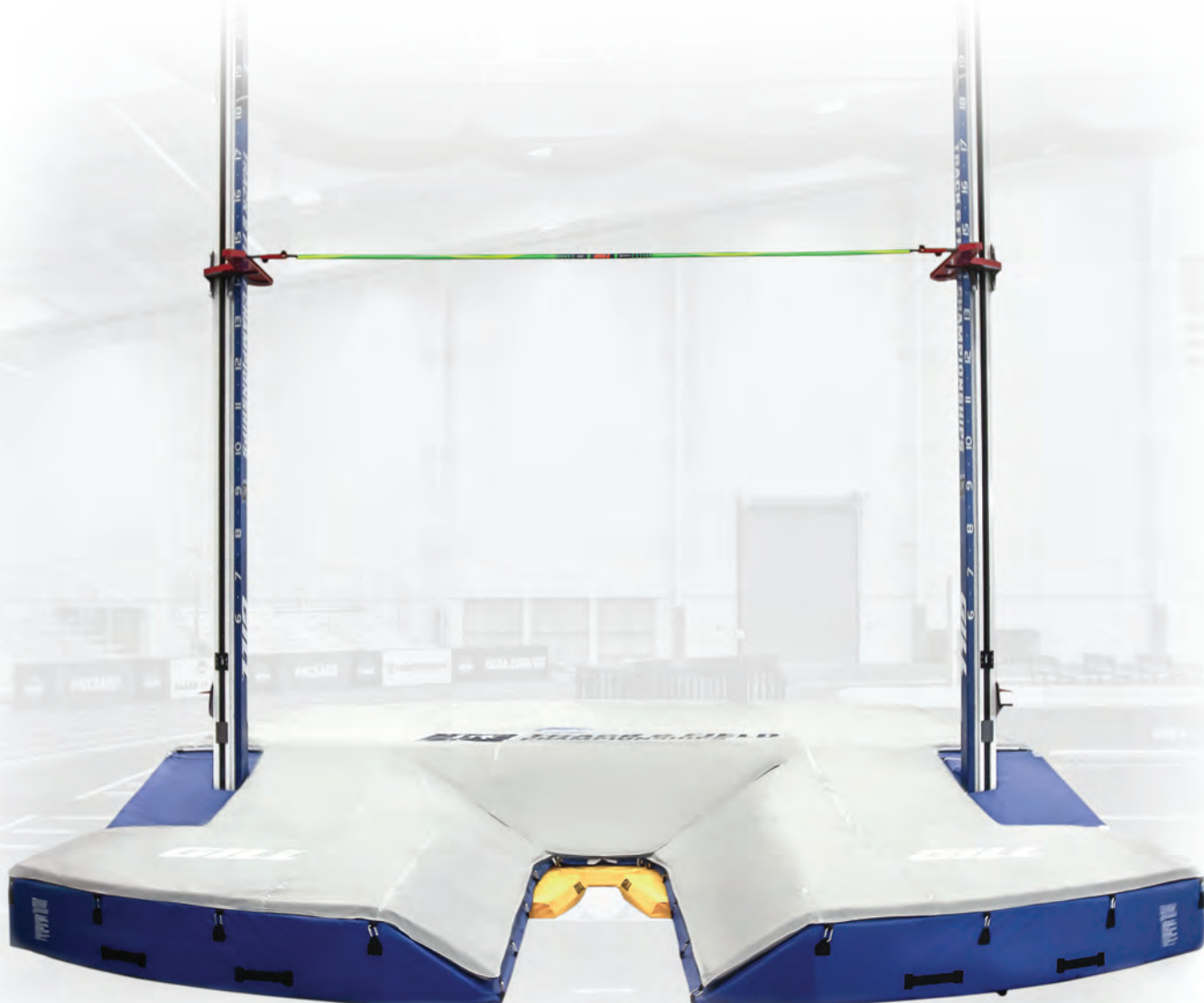
Add logo or school name to any landing system top pad or weather cover. Multi-color graphic is screen printed on 5' x 5' area. **Vector artwork must be provided.**

9451 Top Pad Graphic \$1085

9452 Weather Cover Graphic \$1085

To specify color with order, use the two-digit number of your color selection to replace XX & YY in the item number.

POLE VAULT LANDING SYSTEMS



OFFICIAL EQUIPMENT SUPPLIER TO THE
2020 TRACK & FIELD CHAMPIONSHIPS

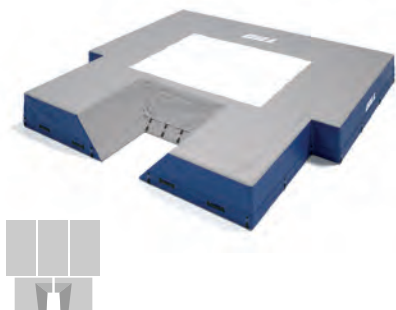
AGX M4 PV LANDING SYSTEM

- 21' 6" x 31' 2" x 32" // 6.55m x 9.50m x 0.81m
- 2" Top Pad
- 21' in back of the vault box
- Meets IAAF, NCAA and NFHS specifications
- 12 year warranty

66817CXXYY Landing System  \$28945

6681702CXX Weather Cover \$2705





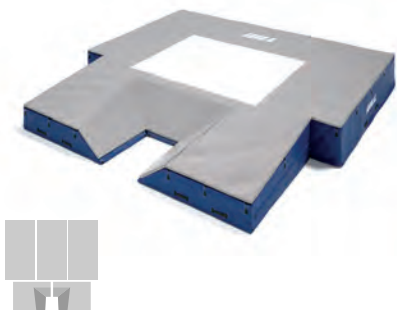
ESSENTIALS™ PV LANDING SYSTEM

- 19' 9" x 20' 2" x 26" // 6.02m x 6.15m x 0.66m
- Skirted Mesh Top Holds Unit in Place
- Royal blue vinyl with gray top pad only
- *Meets NFHS specifications*
- *5 year warranty*

653	Landing System	\$11875
65302	Weather Cover	\$1355

VP300	Essentials PV Valuepack	\$15000
--------------	-------------------------	----------------

INCLUDED: Essentials PV System, Weather Cover, 7100 Essentials PV Standards, 61517CXX Base Pads, 523 Essentials PV Crossbar



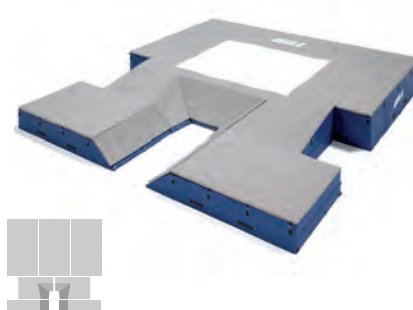
S1 PV LANDING SYSTEM

- 20' x 20' 2.5" x 28" // 6.1m x 6.16m x 0.71m
- 2" Top Pad
- 16' 7" in back of the vault box
- *Meets NFHS specifications*
- *12 year warranty*

65417CXXYY	Landing System	\$15665
6541702CXX	Weather Cover	\$1690

VP65417CXXYY	S1 PV Valuepack	\$19665
---------------------	-----------------	----------------

INCLUDED: S1 PV System, Weather Cover, 77100 Scholastic PV Standards, 61517CXX Base Pads, 523 Essentials PV Crossbar



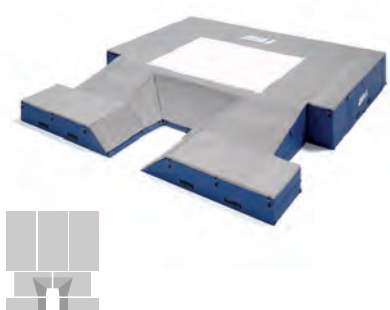
S4 PV LANDING SYSTEM

- 21' 6" x 24' x 28" // 6.55m x 7.32m x 0.71m
- 2" Top Pad
- 16' 7" in back of the vault box
- *Meets NFHS specifications*
- *12 year warranty*

65817CXXYY	Landing System	\$19465
6581702CXX	Weather Cover	\$2005

VP65817CXXYY	S4 PV Valuepack	\$23660
---------------------	-----------------	----------------

INCLUDED: S4 PV System, Weather Cover, 77100 Scholastic PV Standards, 61517CXX Base Pads, 523 Essentials PV Crossbar



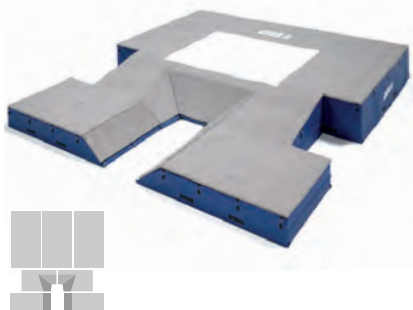
G1 PV LANDING SYSTEM

- 20' x 21' 11" x 32" // 6.10m x 6.68m x 0.81m
- 2" Top Pad
- 16' 7" in back of the vault box
- *Meets NCAA and NFHS specifications*
- *12 year warranty*

66217CXXYY	Landing System	\$19710
6621702CXX	Weather Cover	\$2060

VP66217CXXYY	G1 PV Valuepack	\$27170
---------------------	-----------------	----------------

INCLUDED: G1 PV System, Weather Cover, 77200C12 Collegiate PV Standards, 61617CXX Base Pads, 526 Gill Collegiate PV Crossbar



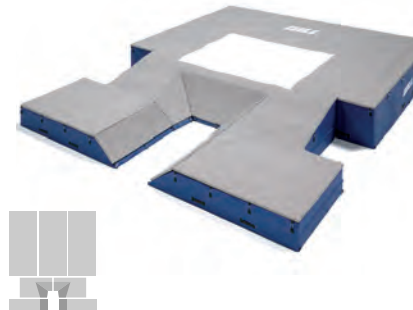
G4 PV LANDING SYSTEM

- 21' 6" x 24' x 32" // 6.55m x 7.32m x 0.81m
- 2" Top Pad
- 16' 7" in back of the vault box
- *Meets NCAA and NFHS specifications*
- *12 year warranty*

66317CXXYY	Landing System	\$21770
6631702CXX	Weather Cover	\$2255

VP66317CXXYY	G4 PV Valuepack	\$27170
---------------------	-----------------	----------------

INCLUDED: G4 PV System, Weather Cover, 77200C12 Collegiate PV Standards, 61617CXX Base Pads, 526 Gill Collegiate PV Crossbar



G6 PV LANDING SYSTEM

- 21' 6" x 27' x 32" // 6.55m x 8.23m x 0.81m
- 2" Top Pad
- 19' 7" in back of the vault box
- *Meets IAAF, NCAA and NFHS specifications*
- *12 year warranty*

66517CXXYY	Landing System	\$24015
6651702CXX	Weather Cover	\$2485

VP66517CXXYY	G6 PV Valuepack	\$27170
---------------------	-----------------	----------------

INCLUDED: G6 PV System, Weather Cover, 77200C12 Collegiate PV Standards, 61617CXX Base Pads, 526 Gill Collegiate PV Crossbar



CUSTOMIZABLE SYSTEMS

See color charts on page 3 to replace the XX and YY in the item numbers.



On all Gill Landing Systems*
Call for Details.


*Excludes Essentials. 5 Year Warranty on Essentials.

HIGH JUMP LANDING SYSTEMS

G4 HJ LANDING SYSTEM

- 20' x 13' 2" x 28" // 6.10m x 4.01m x 0.71m
- 2" Top pad
- Added safety cutout
- Meets IAAF, NCAA and NFHS specifications
- 12 year warranty



64417CXXYY Landing System  \$10245

6441702CXX Weather Cover \$1520



OFFICIAL EQUIPMENT SUPPLIER TO THE
2020 TRACK & FIELD CHAMPIONSHIPS

AGX M4 HJ LANDING SYSTEM

- 27' 2" x 13' 2" x 28" // 8.29m x 4.01m x 0.71m
- 2" Top pad
- Added safety cutout
- Meets IAAF, NCAA and NFHS specifications
- 12 year warranty



64817CXXYY Landing System  \$13545

6481702CXX Weather Cover \$1735



ESSENTIALS™ HJ LANDING SYSTEM

- 16' x 8' x 24" // 4.88m x 2.44m x 0.61m
- Skirted mesh top holds unit in place
- Royal blue vinyl with gray top pad only
- **Meets NFHS specifications**
- **5 year warranty**

640A Landing System **\$4255**

640A02 Weather Cover **\$670**

VP405 Essentials HJ Valuepack **\$5205**

INCLUDED: Essentials HJ System, Weather Cover, 700 Essentials HJ Standards, 522 Essentials HJ Crossbar



S1 HJ LANDING SYSTEM

- 16'6" x 8' x 26" // 5.03m x 2.44m x 0.66m
- 2" Top pad
- **Meets NFHS specifications**
- **12 year warranty**

64117CXXYY Landing System **\$5905**

6411702CXX Weather Cover **\$898**

VP64117CXXYY S1 HJ Valuepack **\$7410**

INCLUDED: S1 HJ System, Weather Cover, 78105 Scholastic HJ Standards, 522 Essentials HJ Crossbar



S4 HJ LANDING SYSTEM

- 16' 6" x 10' x 26" // 5.03m x 3.05m x 0.66m
- 2" Top pad
- Added safety cutout
- **Meets NCAA and NFHS specifications**
- **12 year warranty**

64217CXXYY Landing System **\$7460**

6421702CXX Weather Cover **\$1130**

VP64217CXXYY S4 HJ Valuepack **\$9145**

INCLUDED: S4 HJ System, Weather Cover, 78105 Scholastic HJ Standards, 522 Essentials HJ Crossbar



G1 HJ LANDING SYSTEM

- 18' x 10' x 26" // 5.49m x 3.05m x 0.66m
- 2" Top pad
- Added safety cutout
- **Meets IAAF, NCAA and NFHS specifications**
- **12 year warranty**

64617CXXYY Landing System **\$8440**

6461702CXX Weather Cover **\$1300**

VP64617CXXYY G1 HJ Valuepack **\$10865**

INCLUDED: G1 HJ System, Weather Cover, 78200C12 Collegiate HJ Standards, 525 Gill Collegiate HJ Crossbar



CUSTOMIZABLE SYSTEMS

See color charts on page 3 to replace the XX and YY in the item numbers.



On all Gill Landing Systems*
Call for Details.

*Excludes Essentials

POLE VAULT STANDARDS

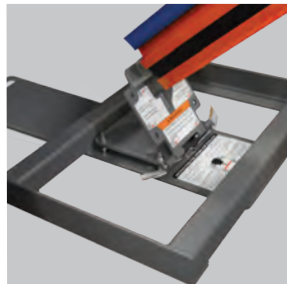
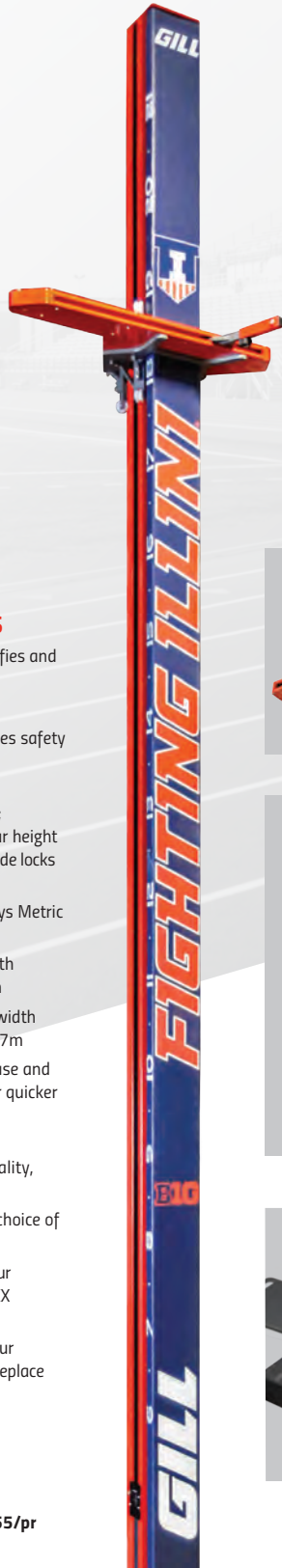


OFFICIAL EQUIPMENT SUPPLIER TO THE
2020 TRACK & FIELD CHAMPIONSHIPS

AGX M4 POLE VAULT STANDARDS

- Dual hand crank system simplifies and speeds up height transitions
- Height range from 6' 6" to 21'
- Exclusive 2" safety pad increases safety of athletes and reduces vaulting pole damage
- Dual positional locking system; Practice Mode creates quick bar height changes while Competition Mode locks in peg height during jumps
- Internal measuring tape displays Metric and English units
- Quick hand crank crossbar depth adjustment from 0cm to 80cm
- Exclusive customizable offset width between pins from 4.30m-4.37m
- Steel base for stability during use and Easy-Port hinge technology for quicker location movement
- Strong aluminum profile increases aesthetics, functionality, and customization
- Customize 2" safety pad with choice of color and graphics
- Use the two-digit number of your vinyl color selection to replace XX in the item number
- Use the two-digit number of your powder coat color selection to replace YY in the item number
- Meets NFHS, NCAA, and IAAF specifications
- 10 year warranty

740110CXXYYSP \$20555/pr



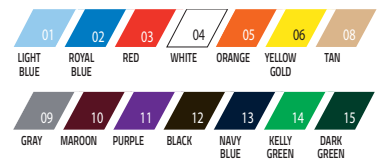
MANUAL DEPTH
ADJUSTMENTS

MANUAL AGX POLE VAULT STANDARDS

- Includes high-end features from the AGX M4 Standard except with manual depth adjustments
- Meets NFHS, NCAA, and IAAF specifications
- 10 year warranty

77300CXXYYSP \$13000/pr

Vinyl



Powder Coat



*Gray and Black powder coat available in Gloss or Flat



On all Gill Standards®
Call for Details.

*Excludes Essentials. 5 Year Warranty on Essentials.



77200C02

COLLEGIATE POLE VAULT STANDARDS

- Constructed of heavy duty aluminum uprights and risers with custom glide parts for smooth operation
- Weighted steel base includes leveling feet and wheels for easy mobility
- Clamping mechanism pulls upright and riser together to hold desired height
- Height adjustment: 10' 3" to 21' with adjustable height readout window display
- Reads both English and Metric measurements
- 55mm bar rest pins and 8 base anchors included
- *Meets NFHS, NCAA, and IAAF specifications*
- **10 year warranty**

77200CXX \$4370/pr



SCHOLASTIC POLE VAULT STANDARDS

- Constructed of heavy duty aluminum uprights and risers with custom glide parts for smooth operation
- Weighted steel base includes wheels for easy mobility
- Clamping mechanism pulls upright and riser together to hold desired height
- Height adjustment: 7' to 18'
- Reads both English and Metric measurements
- *Meets NFHS and NCAA specifications*
- **10 year warranty**

77100 \$1770/pr



ESSENTIALS™ POLE VAULT STANDARDS

- Full steel tubing construction gives added strength
- Height adjustment: 6' to 16'
- Reads both English and Metric measurements
- Upright detaches from base rails for improved storage
- Wide stance base for added stability
- 75mm bar rest pins and 8 base anchors included
- *Meets NFHS specifications*
- **5 year warranty**

7100 \$1085/pr



PV STANDARD UPRIGHT PAD

- Protects competitors, pole, and standards from harm
- Fits snug around the standard facing the inside of the pit
- Open back allows for setting of height and tightening of knobs
- High density foam in vinyl casing
- Customizable Color

731109CXX \$389/ea



71252 Shown

OFFSET EXTENSION

- 71252 adds additional 2' to Gill standards: 77100 and 77200CXX
- 71253 adds additional 4' to Gill standards: 77100 and 77200CXX
- Fits any standards with 1.25" square offsets
- Comes in safety orange color

71252 \$108/pr

71253 \$238/pr

HIGH JUMP STANDARDS

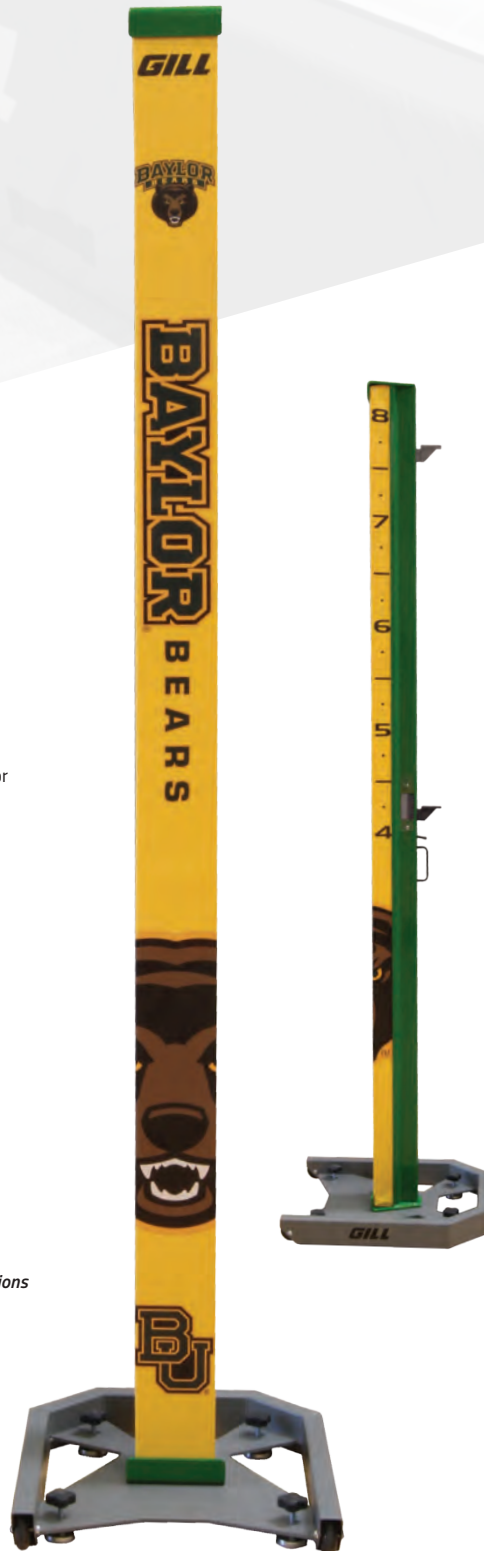


OFFICIAL EQUIPMENT SUPPLIER TO THE
2020 TRACK & FIELD CHAMPIONSHIPS

AGX M4 HIGH JUMP STANDARDS

- Simple height adjustments with unique thumb button and handle assist
- Choose your team's powder coat color for complete customization
- Customize exclusive 2" safety pad with choice of color and graphics
- High-visible English or Metric unit height indicator display for fans, coaches, and athletes
- Eye-level height indicator color coordinated with dual bar rest system
- Exclusive steel powder coated weighted base with wheels for increased stability and easy transportation
- Height range from 1' to 8' 3"
- Use the two-digit number of your vinyl color selection to replace XX in the item number
- Use the two-digit number of your powder coat color selection to replace YY in the item number
- Meets NFHS, NCAA, and IAAF specifications
- 10 year warranty

740120CXXYYSP  \$2235/pr



M4 HIGH JUMP BASE PADS

Specifically designed for AGX M4 High Jump Standards.

- Use the two-digit number of your vinyl color selection to replace XX in the item number

708CXX \$370/pr

Vinyl



Powder Coat

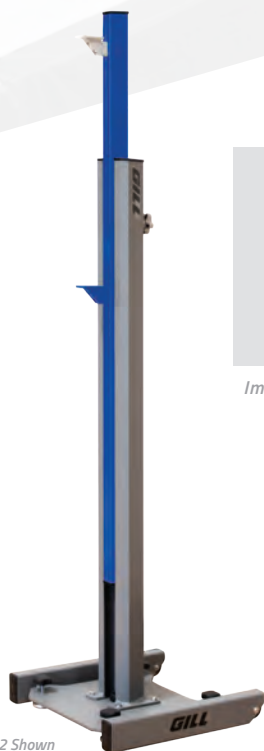


*Gray and Black powder coat available in Gloss or Flat



On all Gill Standards*
Call for Details.

*Excludes Essentials. 5 Year Warranty on Essentials.



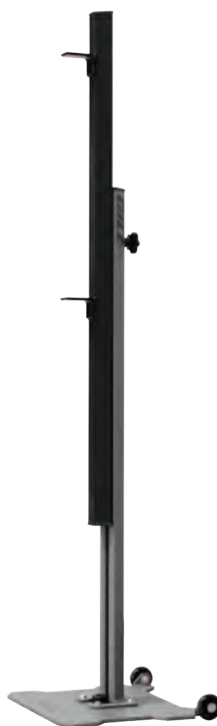
Improved Clamping Mechanism

78200C02 Shown

COLLEGIATE HIGH JUMP STANDARDS

- Constructed of heavy duty aluminum uprights and risers with custom glide parts for smooth operation
- Weighted steel base includes wheels for easy mobility and leveling feet
- Clamping mechanism pulls upright and riser together to hold desired height
- Height adjustment: 2'8" - 8'4" with adjustable height readout window display
- Reads both English and Metric measurements.
- *Meets NFHS, IAAF, and NCAA specifications*
- **10 year warranty**

78200CXX \$1355/pr



SCHOLASTIC HIGH JUMP STANDARDS

- Constructed of heavy duty aluminum uprights and risers with custom glide parts for smooth operation
- Weighted steel base includes wheels for easy mobility
- Clamping mechanism pulls upright and riser together to hold desired height
- Height adjustment: 2' - 7'4"
- Reads both English and Metric measurements
- *Meets NFHS and NCAA specifications*
- **10 year warranty**

78105 \$765/pr



ESSENTIALS™ HIGH JUMP STANDARDS

- Square steel construction with durable black powder coat finish
- Weighted base includes wheels for easy mobility
- Height adjustment: 2' to 8'
- Reads both English and Metric measurements
- *Meets NFHS and NCAA specifications*
- **5 year warranty**

700 Standards \$368/pr

HIGH JUMP MULTI-BAR REST ATTACHMENT

- Eliminates need for time wasting raising and lowering of standards at practice
- Designed to fit most high jump standards
- Six bar rest pads at 3" increments
- 1 3/4" x 1 3/4" openings with a 22" overall length

71254 \$71/pr



HIGH JUMP STANDARD BASE PADS

- Provides additional safety during high jump event
- 2" thick foam pad encased in yellow vinyl

707 \$231/pr



LANDING SYSTEM ACCESSORIES



2534



2535



PATENT NO. 8444531

NEW!

PIT STOP

- 1/4" Powder coated steel plates
- 1/2" spikes on base secures the plate from shifting
- Pole Vault Pit Stop includes 2 base plates with a connector panel
- High Jump Pit Stop includes 1 base plate
- Compatible with any pole vault or high jump pit

2534 Pole Vault \$559

2535 High Jump \$229

SAFETYMAX+™ VAULT BOX COLLAR

- Compatible with any style of landing system
- Spike Plate to reduce collar from slipping
- Complies with ASTM standard F2949
- Meets the 2014 NCAA and 2015 NFHS rule

719 SafetyMax+ Vault Box Collar \$612

71904 Spike Plate Kit \$205



VAULT PERIMETER PAD

- High school rule requires covering over all exposed hard surfaces surrounding the PV landing area
- 4' x 8' pad is 2" thick high density foam

716 \$294



STANDARD BASE PADS

- Fits 28" tall Gill systems and all standards with center-mounted uprights

61517CXX \$1080/pr



LANDING SYSTEM TIE-DOWN KIT

- Decrease the chances of pit 'flying' away
- Increase safety and security of your pits

7081 With Concrete Anchors \$52

7082 With Grass Anchors \$52



ANGLED BASE PADS

- Fits 32" tall Gill systems and all standards with center-mounted uprights
- Adjustable measurement scale on top of pad
- Meets IAAF specifications

61617CXX \$1765/pr



SLOPED MANUAL AGX BASE PADS

- Specifically designed for 77300CXXYYSP Manual AGX M4 Pole Vault Standards.

61817CXX \$1850/pr



SLOPED AGX M4 BASE PADS

- Specifically designed for 740110CXXYYSP AGX M4 Pole Vault Standards.

61717CXX \$1530/pr



CUSTOMIZABLE BASE PADS

See color charts on page 3 to replace the XX and YY in the item numbers.



ALUMINUM PIT CART

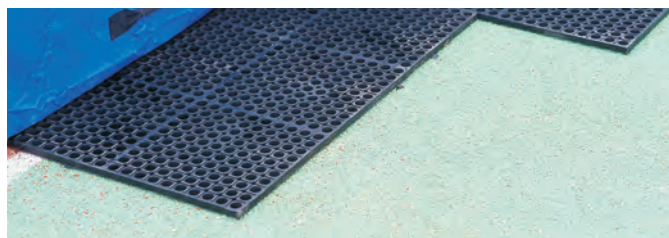
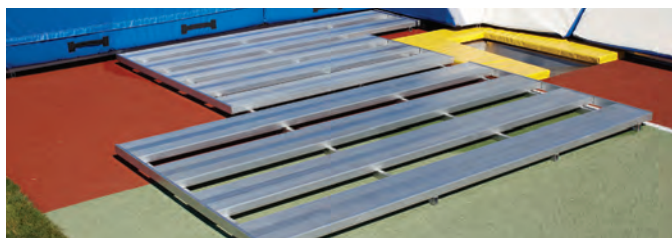
- Deck of cart measures 5' x 10'
- Constructed of quality aluminum planking
- Pneumatic caster wheels have a 12" diameter for easy travel over smooth and rough surfaces
- Deck height is optimal 19"

768 \$2570

WOOD DECK PIT CART

- Deck of cart measures 4' x 8'
- Constructed of MDO exterior plywood for improved weather resistance
- Pneumatic caster wheels have a 12" diameter for easy travel over smooth and rough surfaces
- Deck height is 16"

767 \$1275



PLATFORMS FOR LANDING SYSTEMS

- Support PV and HJ pits above the ground to prevent water damage
- Corrosion resistant aluminum or corrosion resistant rubber construction
- Consist of individual, easy to carry and convenient to store pallets

Aluminum

733641	Fits 64117 High Jump System	\$2875
733642	Fits 64217 High Jump System	\$3960
733644	Fits 64417 High Jump System	\$6120
733646	Fits 64617 High Jump System	\$4250
733648	Fits 64817 High Jump System	\$6480
733654	Fits 65417 Pole Vault System	\$7345
733662	Fits 66217 Pole Vault System	\$7850
733663	Fits 66317 and 65817 Pole Vault System	\$8605
733665	Fits 66517 Pole Vault System	\$10120
733668	Fits 66817 Pole Vault System	\$10660

Rubber

734641	Fits 64117 High Jump System	\$1815
734642	Fits 64217 High Jump System	\$2180
734644	Fits 64417 High Jump System	\$4315
734646	Fits 64617 High Jump System	\$2350
734648	Fits 64817 High Jump System	\$4840
734654	Fits 65417 Pole Vault System	\$4850
734662	Fits 66217 Pole Vault System	\$4995
734663	Fits 66317 and 65817 Pole Vault System	\$6020
734665	Fits 66517 Pole Vault System	\$7140
734668	Fits 66517 Pole Vault System	\$7695



WATER SHED INSERT

- Guaranteed to increase the life of your HJ and PV pits
- Prevents water pooling on your pit which destroys your foam

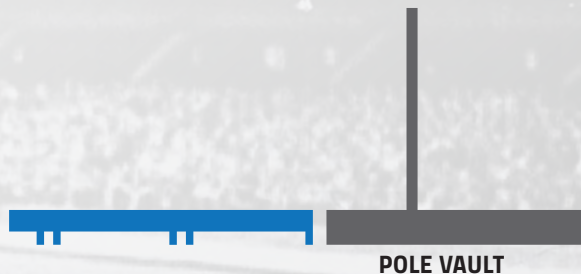
709 \$78

RAISED RUNWAYS

In the past, these types of runway systems have been priced upwards to \$75k! You can now have this product at a fraction of that price. The Gill Raised Runway allows for the flexibility to design runways that will accommodate the pole vault, long jump and triple jump for all levels of competition and practice.

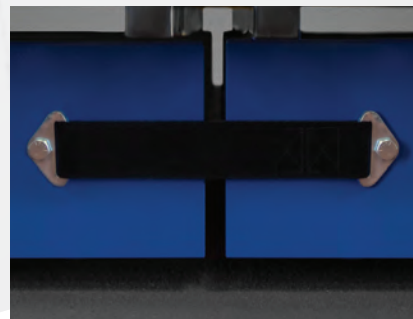
The basic unit is an 8' x 4' general runway section. Specialized sections incorporate a vault box or take-off board trays and blanking lids. The construction of each section is welded aluminum, with 1/2" plywood decking. Track surfacing is not included, so you can have your preference on surfacing.

Adjunct products for the Raised Runway include the Soft Shell Sand Pit Form for the long and triple jump (sand not included), and a pole vault pit elevating system.



CALL TODAY!

LET US HELP YOU PIECE TOGETHER THE **RAISED RUNWAY** SYSTEM THAT BEST FITS YOUR NEEDS.



CUSTOMIZABLE RUNWAY

Powder Coat



*Gray and Black powder coat available in Gloss or Flat

Gill Raised Runways are used at:
Kent State University, Marshall University,
Towson University, and Vanderbilt University.

PIT GARAGES

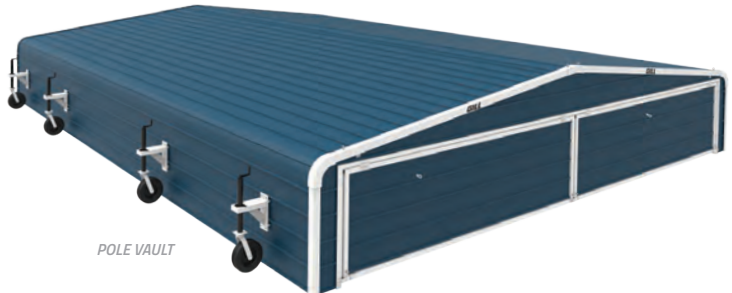


PIT GARAGES

- Protect your PV or HJ investment from the elements
- Keep rain, snow, and vandals away
- Easily moves on and off position with the help of a few people
- Use the two-digit number of your color selection to replace XX in the item number

881018CXX	21' X 10' 6" High Jump Pits or Smaller	\$9335
881425CXX	28' 5" X 13' 8" High Jump Pits or Smaller	\$13980
882120CXX	20' 3" X 21' 11" Pole Vault Pits or Smaller	\$14605
883022CXX	22' X 32' Pole Vault Pits or Smaller	\$17940
GILLINSTALLHJG	High Jump Pit Garage Factory Installation	\$3905
GILLINSTALLPVG	Pole Vault Pit Garage Factory Installation	\$5010

COLORS



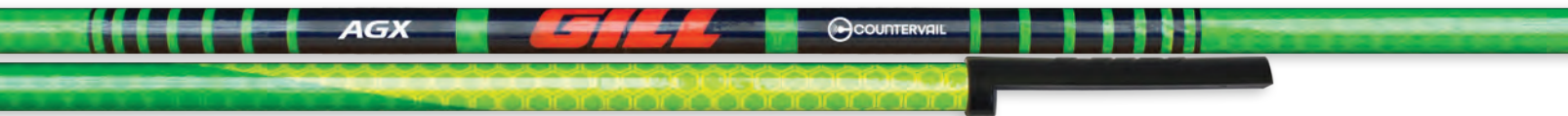
POLE VAULT



HIGH JUMP



CROSSBARS



AGX™ COUNTERVAIL CROSSBARS

- Includes high-end features of the AGX Crossbar with added Countervail™ Vibration Cancelling Technology
- Countervail strengthens the crossbar creating minimal sag
- Dampens 40% quicker than other crossbars
- Meets NFHS, NCAA and IAAF specifications, IAAF certified



535	High Jump		\$315
536	Pole Vault		\$322



AGX™ CROSSBARS

- Exclusive half moon profile ends lower the center of gravity of the bar
- Heaviest crossbar the rules allow
- Shorter, more stable, end pieces redesigned for improved performance
- Features durable thick-walled pulltruded fiberglass rod
- Meets NFHS, NCAA and IAAF specifications, IAAF certified



INSPECT CROSSBARS FOR VISIBLE AND CONCEALED DAMAGE BEFORE ACCEPTING DELIVERY

CROSSBARS ARE NOT GUARANTEED AGAINST BREAKAGE

529	High Jump		\$142
530	Pole Vault		\$148



GILL® COLLEGIATE CROSSBARS

- Features durable thick-walled pulltruded fiberglass rod
- Minimum sag
- Order sets of three to help offset expensive shipping costs
- Meets NFHS, NCAA and IAAF specifications, IAAF certified

525	High Jump		\$103/ea
5253	High Jump (3)		\$300/set
526	Pole Vault		\$103/ea
5263	Pole Vault (3)		\$300/set



ESSENTIALS™ CROSSBARS

- Features durable pulltruded fiberglass rod
- Excellent choice for high school competitions
- Order sets of three to help offset expensive shipping costs
- Meets NFHS specifications

522	High Jump		\$68/ea
5223	High Jump (3)		\$197/set
523	Pole Vault		\$68/ea
5233	Pole Vault (3)		\$197/set



PV/HJ MEASURING STICK

- 59" tall aluminum measuring stick brings laser readout closer to eye level
- Use for both High Jump and Pole Vault events
- Simple to use: Utilize viewfinder to line up crossbar and press the button
- Measure in either English or Metric units
- Minimum measurement is 1.54m (5' 1/2"), No maximum measurement

E73708 *Stick and Laser* **\$1040**

3-PIECE CROSSBARS

- Crossbar kit that ships by UPS instead of truck
- Reduced shipping charges
- Can be shipped UPS overnight
- Utilizes same durable thick-walled pulltruded fiberglass as Collegiate Crossbars
- Meets NFHS and NCAA specifications



531	<i>High Jump</i>	\$145
532	<i>Pole Vault</i>	\$145



PUTTER UPPER

- Simplest crossbar placer ever made
- Fits over the end of any vaulting pole

710390 **\$20**



TELESCOPING CROSSBAR PLACER

- Facilitate easy placement of crossbars at all heights
- Telescoping pole extends 6' to 12' in 6" increments
- Thumb mechanism allows for quick adjustment

950 **\$135**



ELASTIC CROSSBAND

- Training crossbar for PV and HJ
- Bright fluorescent orange elastic tubing
- 1" diameter foam sections

528 **\$22**



PACER[®]

ONE *FXV* COMPOSITE

**RISE
ABOVE.**





KATIE NAGEOTTE

NATIONAL, NACAC, IAAF & USATF CHAMPION

  @ktnago13

#TeamPacer

POLES

ONE



ONE-YEAR WARRANTY
ON EVERY PACER POLE

QUICK SHIP
24-HR SHIPPING ON ALL
FIBERGLASS POLES

A full-line of vaulting poles designed for every vaulter, allowing smooth transition from pole to pole no matter the length, weight, or model. The ONLY vaulting pole with a One Year warranty.

From novice to elite, Pacer has you covered.

THE PACER® ADVANTAGE

The Pacer One is a versatile, economical pole perfect for every vaulter. The design 'slows down' the bend allowing more time to rotate into vertical position. Available 9' to 13' in 10 lb increments.



9'
(2.75M)
\$270

ITEM #	TEST WT	TIP
527527	60 lb	21
527532	70 lb	21
527536	80 lb	21
527541	90 lb	21
527545	100 lb	21

10'
(3.10M)
\$298

ITEM #	TEST WT	TIP
531032	70 lb	21
531036	80 lb	21
531041	90 lb	21
531045	100 lb	21
531050	110 lb	21
531054	120 lb	21
531059	130 lb	21

10'6"
(3.20M)
\$318

ITEM #	TEST WT	TIP
532532	70 lb	21
532536	80 lb	21
532541	90 lb	21
532545	100 lb	21
532550	110 lb	21
532554	120 lb	21
532559	130 lb	21
532563	140 lb	21

11'
(3.35M)
\$336

ITEM #	TEST WT	TIP
533536	80 lb	21
533541	90 lb	21
533545	100 lb	21
533550	110 lb	21
533554	120 lb	21
533559	130 lb	21
533563	140 lb	21
533568	150 lb	21

11'6"
(3.51M)
\$348

ITEM #	TEST WT	TIP
535541	90 lb	21
535545	100 lb	21
535550	110 lb	21
535554	120 lb	21
535559	130 lb	21
535563	140 lb	21
535568	150 lb	21

12'
(3.66M)
\$359

ITEM #	TEST WT	TIP
536041	90 lb	21
536045	100 lb	21
536050	110 lb	21
536054	120 lb	21
536059	130 lb	18
536063	140 lb	18
536068	150 lb	16
536073	160 lb	16

12'6"
(3.81M)
\$376

ITEM #	TEST WT	TIP
537545	100 lb	21
537550	110 lb	21
537554	120 lb	21
537559	130 lb	18
537563	140 lb	18
537568	150 lb	16
537573	160 lb	16
537577	170 lb	16

13'
(3.96M)
\$393

ITEM #	TEST WT	TIP
540050	110 lb	18
540054	120 lb	18
540059	130 lb	18
540063	140 lb	16
540068	150 lb	16
540073	160 lb	13
540077	170 lb	13
540082	180 lb	13

VAULTING POLES ARE NOT GUARANTEED AGAINST BREAKAGE

INSPECT VAULTING POLES FOR VISIBLE AND CONCEALED DAMAGE BEFORE ACCEPTING DELIVERY

CHOOSING POLE TIPS

COMPETITION POLE TIPS

Tough, durable polyurethane for a softer plant and long lasting performance.



700002, 700004, 700005, 700007, 700010, 700013, 700016, 700018, and 700021 **\$11/ea**

FXV



11' (3.35M)

\$445

ITEM #	TEST WT	TIP
733536	80 lb	21
733541	90 lb	21
733545	100 lb	21
733550	110 lb	21
733554	120 lb	21
733559	130 lb	21
733563	140 lb	18
733568	150 lb	18

12' (3.66M)

\$476

ITEM #	TEST WT	TIP
736045	100 lb	21
736047	105 lb	21
736050	110 lb	21
736052	115 lb	21
736054	120 lb	21
736057	125 lb	21
736059	130 lb	18
736061	135 lb	18
736063	140 lb	18
736066	145 lb	18
736068	150 lb	18
736070	155 lb	18
736073	160 lb	18

13' (3.96M)

\$562

ITEM #	TEST WT	TIP
740050	110 lb	18
740052	115 lb	18
740054	120 lb	18
740057	125 lb	18
740059	130 lb	18
740061	135 lb	18
740063	140 lb	16
740066	145 lb	16
740068	150 lb	16
740070	155 lb	16
740073	160 lb	13
740075	165 lb	13
740077	170 lb	13
740080	175 lb	13
740082	180 lb	10

11'6" (3.51M)

\$458

ITEM #	TEST WT	TIP
735041	90 lb	21
735045	100 lb	21
735050	110 lb	21
735054	120 lb	18
735059	130 lb	18
735063	140 lb	16
735068	150 lb	16

12'6" (3.81M)

\$508

ITEM #	TEST WT	TIP
737545	100 lb	21
737547	105 lb	21
737550	110 lb	21
737552	115 lb	18
737554	120 lb	18
737557	125 lb	18
737559	130 lb	18
737561	135 lb	18
737563	140 lb	16
737566	145 lb	16
737568	150 lb	16
737570	155 lb	16
737573	160 lb	16
737575	165 lb	16
737577	170 lb	16

13'6" (4.11M)

\$594

ITEM #	TEST WT	TIP
741554	120 lb	16
741557	125 lb	16
741559	130 lb	16
741561	135 lb	16
741563	140 lb	16
741566	145 lb	16
741568	150 lb	13
741570	155 lb	13
741573	160 lb	13
741575	165 lb	13
741577	170 lb	10
741580	175 lb	10

THE PACER® ADVANTAGE

Gill's flagship® vaulting pole is made from an S-fiberglass and is designed to be consistent through the series of poles. This creates a smooth transition for a vaulter moving from one pole to the next. The Pacer® FXV performs well for all styles of jumpers. Available 11' to 16'9" in 5 lb or 10lb increments.



14' (4.27M)

\$606

ITEM #	TEST WT	TIP
742557	125 lb	16
742559	130 lb	16
742561	135 lb	13
742563	140 lb	13
742566	145 lb	13
742568	150 lb	13
742570	155 lb	13
742573	160 lb	13
742575	165 lb	10
742577	170 lb	10
742580	175 lb	7
742582	180 lb	7

15' (4.57M)

\$660

ITEM #	TEST WT	TIP
746063	140 lb	10
746066	145 lb	10
746068	150 lb	10
746070	155 lb	10
746073	160 lb	10
746075	165 lb	7
746077	170 lb	7
746080	175 lb	7
746082	180 lb	5
746084	185 lb	5

16'1 (4.90M)

\$778

ITEM #	TEST WT	TIP
749073	160 lb	10
749075	165 lb	10
749077	170 lb	7
749080	175 lb	7
749082	180 lb	5
749084	185 lb	5
749086	190 lb	4
749088	195 lb	4
749091	200 lb	4

14'6 (4.42M)

\$616

ITEM #	TEST WT	TIP
744059	130 lb	13
744061	135 lb	13
744063	140 lb	10
744066	145 lb	10
744068	150 lb	10
744070	155 lb	10
744073	160 lb	10
744075	165 lb	10
744077	170 lb	7
744080	175 lb	7
744082	180 lb	7
744084	185 lb	7

15'6 (4.72M)

\$736

ITEM #	TEST WT	TIP
747068	150 lb	10
747070	155 lb	10
747073	160 lb	7
747075	165 lb	7
747077	170 lb	5
747080	175 lb	5
747082	180 lb	4
747084	185 lb	4
747086	190 lb	4
747088	195 lb	4

16'5 (5.01M)

\$854

ITEM #	TEST WT	TIP
750077	170 lb	7
750080	175 lb	7
750082	180 lb	7
750084	185 lb	5
750086	190 lb	5
750088	195 lb	4
750091	200 lb	4

16'9 (5.11M)

\$908

ITEM #	TEST WT	TIP
751084	185 lb	5
751086	190 lb	5
751088	195 lb	4
751091	200 lb	4
751093	205 lb	4

COMPOSITE



13'
(3.96M)

\$584

ITEM #	TEST WT	TIP
340050	110 lb	21
340052	115 lb	18
340054	120 lb	18
340057	125 lb	18
340059	130 lb	18
340061	135 lb	18
340063	140 lb	18
340066	145 lb	18
340068	150 lb	16
340070	155 lb	16
340073	160 lb	16

14'
(4.27M)

\$670

ITEM #	TEST WT	TIP
342557	125 lb	16
342559	130 lb	16
342561	135 lb	16
342563	140 lb	16
342566	145 lb	16
342568	150 lb	13
342570	155 lb	13
342573	160 lb	13
342575	165 lb	13
342577	170 lb	13
342580	175 lb	13
342582	180 lb	10

15'
(4.57M)

\$812

ITEM #	TEST WT	TIP
346063	140 lb	13
346066	145 lb	10
346068	150 lb	10
346070	155 lb	10
346073	160 lb	10
346075	165 lb	10
346077	170 lb	10
346080	175 lb	10
346082	180 lb	7
346084	185 lb	7
346086	190 lb	7

13'6"
(4.11M)

\$630

ITEM #	TEST WT	TIP
341554	120 lb	18
341557	125 lb	18
341559	130 lb	18
341561	135 lb	16
341563	140 lb	16
341566	145 lb	16
341568	150 lb	16
341570	155 lb	16
341573	160 lb	13
341575	165 lb	13
341577	170 lb	13
341580	175 lb	13

14'6"
(4.42M)

\$710

ITEM #	TEST WT	TIP
344059	130 lb	13
344061	135 lb	13
344063	140 lb	13
344066	145 lb	10
344068	150 lb	10
344070	155 lb	10
344073	160 lb	10
344075	165 lb	10
344077	170 lb	10
344080	175 lb	10
344082	180 lb	10
344084	185 lb	10
344086	190 lb	7
344088	195 lb	7

15'6"
(4.72M)

\$853

ITEM #	TEST WT	TIP
347068	150 lb	10
347080	155 lb	10
347073	160 lb	10
347075	165 lb	10
347077	170 lb	10
347080	175 lb	10
347082	180 lb	7
347084	185 lb	7
347086	190 lb	5
347088	195 lb	5

THE PACER® ADVANTAGE

The Pacer COMPOSITE blends T2-Fiber™, Carbon fiber, and S-Glass to create the next generation pole design for the advanced and technical vaulter. This patent-pending design achieves a lighter carry weight, increased tensile strength, and superior energy return with a durable composite construction.

Available 13' to 16'9" in 5lb increments.



16'1
(4.90M)

\$895

ITEM #	TEST WT	TIP
349073	160 lb	10
349075	165 lb	10
349077	170 lb	10
349080	175 lb	10
349082	180 lb	7
349084	185 lb	7
349086	190 lb	5
349088	195 lb	5
349091	200 lb	5

16'5
(5.01M)

\$966

ITEM #	TEST WT	TIP
350077	170 lb	10
350080	175 lb	7
350082	180 lb	7
350084	185 lb	7
350086	190 lb	5
350088	195 lb	5
350091	200 lb	4
350093	205 lb	4
350095	210 lb	4

16'9
(5.11M)

\$997

ITEM #	TEST WT	TIP
351084	185 lb	5
351086	190 lb	5
351088	195 lb	4
351091	200 lb	4
351093	205 lb	4
351095	210 lb	4
351097	215 lb	2

**WE RAISED
THE BAR SO
YOU CAN TOO.**

VAULTING POLES ARE NOT
GUARANTEED AGAINST BREAKAGE

INSPECT VAULTING POLES FOR
VISIBLE AND CONCEALED DAMAGE
BEFORE ACCEPTING DELIVERY

CHOOSING POLE TIPS

COMPETITION POLE TIPS

Tough, durable polyurethane for a softer plant and long lasting performance.



700002, 700004, 700005, 700007, 700010,
700013, 700016, 700018, and 700021 **\$11/ea**

POLE BAGS & ACCESSORIES

CUSTOM POLE BAG

- Customize for your school's personality!
- Holds up to five vaulting poles
- Shoulder strap for ease of transportation
- Heavy duty vinyl and leather reinforced ends for long life
- Made to fit 6" corrugated drain tube (not included)
- Use the two-digit number of your vinyl color selection (Page 8) to replace the XX in the item number

8008##CXX 10'-18' Custom Pole Bag \$540

**Use two-digit number of desired pole bag length to replace '##' in part number. 10'-18' lengths available.*

PACER DELUXE TEAM POLE BAG

- Holds up to 20 vaulting poles (10 sleeved, 10 unsleeved)
- Heavy duty nylon outer with a dense inner 1/2" thick foam fused with a hard plastic shell for strength
- 10 durable sewn-in pole sleeves
- Soft rubber handles and seams

700714 14' Team Pole Bag \$746

700715 15' Team Pole Bag \$832

700716 16' Team Pole Bag \$898

700717 17' Team Pole Bag \$941



ESSENTIALS™ POLE BAG

- Holds up to five vaulting poles
- Heavy duty polyester for long life
- Maximum length is 15'
- Made to fit 6" corrugated drain tube (not included)

800801 \$119

ELITE POLE BAG

- Holds up to five vaulting poles
- Heavy duty vinyl and leather reinforced ends for long life
- Adjustable from 14' 6" to 17' 6"
- Made to fit 6" corrugated drain tube (not included)

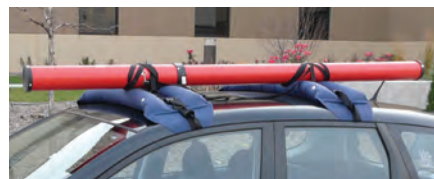
800802 \$216



POLE PROTECTOR SLEEVE

Slips on easily to provide maximum protection against damage caused by pole contact with the upper edges of the vault box

700255 \$8.25



HANDIRACK™ INFLATABLE ROOF RACK

- Can be used to transport vaulting poles and/or javelins
- Economical alternative to installing a permanent after market roof rack
- Includes 2-HandiRack twin tubes with 5 metal D-ring anchor points, 2x3m webbing tie-downs, air pump and travel bag

700800 \$162



VAULT TRAINER SYSTEM

- Unique device for beginner and intermediate vaulters
- Allows athlete to acclimate the body to positions occurring during peak vault height
- Strengthens muscle groups for effective push off
- Helps to coordinate grip and pole positions while rotating around pole for push off

TA190 \$335



PACER® GIZMO

- Practice vaulting while safely on the ground
- Allows athlete to mimic complex movements that occur in the air while firmly on your feet
- Three cord system to accommodate your specific level of strength and coordination
- Vault specific training device designed to take you to the next level

700231 Small Grip \$258

700232 Large Grip \$258





INTERNATIONAL POLE CART

- Built to hold all the vaulting poles you own
- Made of sturdy steel with high end design
- Dual purposed wheels switch from swivel to locked position in a snap

733180	<i>Cart</i>	\$1005
735	<i>Tow Bar Kit</i>	\$155



CHALK STAND

- Store chalk during practice and competition
- Lightweight stand features a wide opening for hands, a pocket for extra chalk, and rungs for hanging accessories or resting vaulting poles

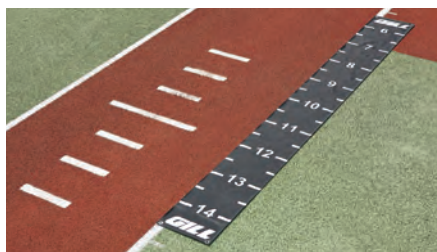
WE305	<i>Chalk Stand</i>	\$279
700250	<i>1 lb Sports Chalk</i>	\$17



PORTABLE POLE RACK

- Convenient way to store and protect your poles during meets and practice
- Free standing pole rack made of heavy duty steel with durable powder coat finish

725	\$175
------------	--------------



PV TAKEOFF INDICATOR

- Large easy to read numbers
- Easily identify the take-off step placement

TA189	\$24
--------------	-------------



VAULT BOX POWER PUMP

- Battery powered by 3 "D" cell batteries (not included)
- Pump fully submersible
- Empties a water filled vault box in less than five minutes

72001	\$144
--------------	--------------



**GRRRIP PLUS
LOTION & SPRAY**

- Scientifically formulated mixture developed to enhance hand-grip up to 75% better
- Fluid mixes with natural skin oils to create a moisture barrier yet still allows the skin to breathe
- More convenient and cleaner than chalk

700253	<i>Lotion</i>	\$12
700254	<i>Spray</i>	\$12



POLE VAULT GRIP TAPE

- 12 ¼ yard roll of colored adhesive tape
- 1 ½" width

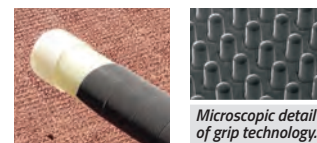
700259	<i>White (15 yds)</i>	\$9
700260	<i>Red</i>	\$9
700261	<i>Maroon</i>	\$9
700262	<i>Gold</i>	\$9
700263	<i>Green</i>	\$9
700264	<i>Royal</i>	\$9
700265	<i>Purple</i>	\$9
700266	<i>Black</i>	\$9
700267	<i>Pink</i>	\$9



**GRAPHIC
POLE VAULT GRIP TAPE**

- 20 yard roll of adhesive design tape
- Camo/flag designs come in 2" width
- Jolly Roger design comes in 1" width

700273	<i>USA Flag</i>	\$18
700271	<i>Pink Camo</i>	\$18
700272	<i>Winter Camo</i>	\$18
700274	<i>Jolly Roger</i>	\$18



**NINJA ELITE
POLE VAULT GRIP TAPE**

- Lab-designed with thousands of gripping 'fingers'
- Grip lighter and hold tighter
- No additional substances needed (chalk, sticky spray, etc)
- Slip resistant, vibration dampening and easy release properties
- Water and oil resistant

700281	<i>9' x 1"</i>	\$22
---------------	----------------	-------------

SPORT

CHANGES

LIVES.

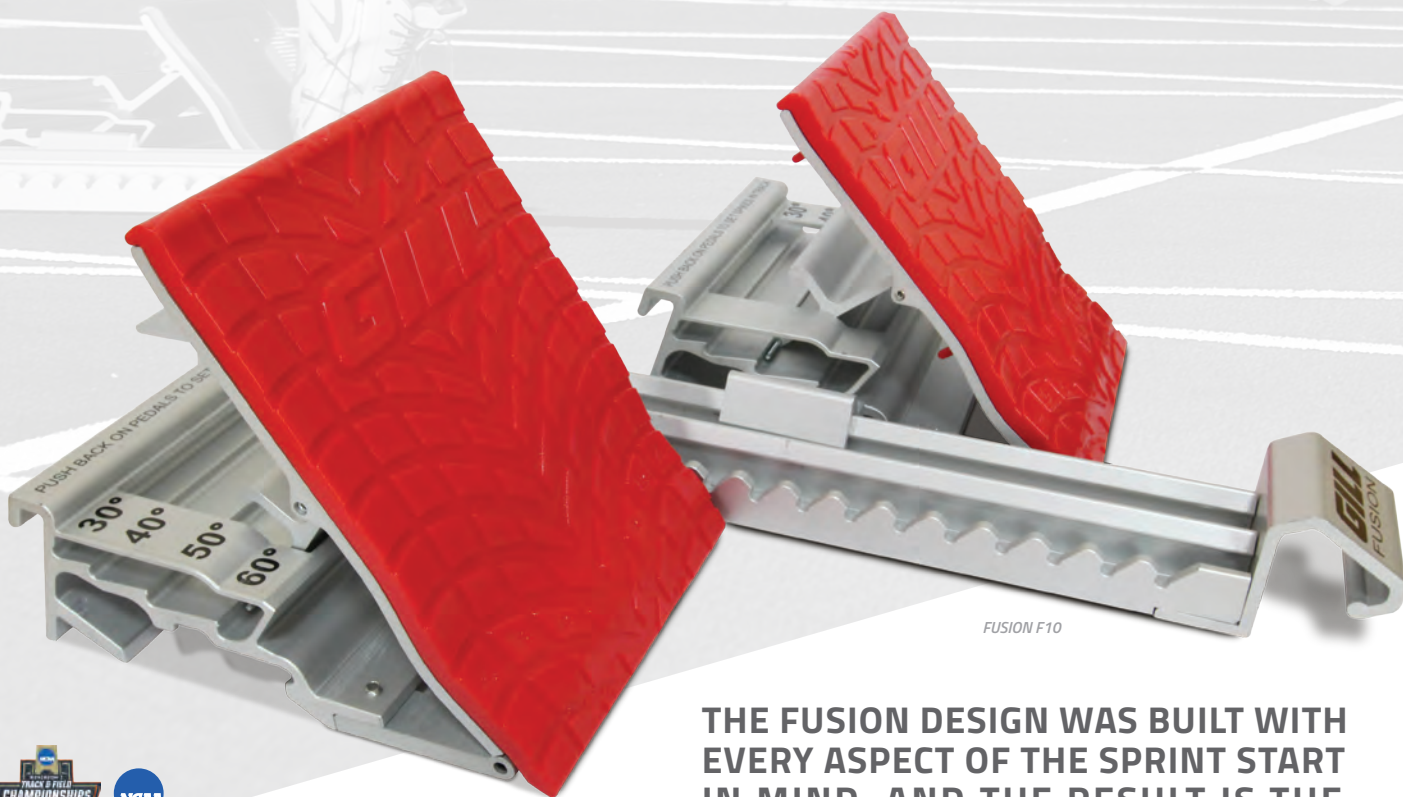




***SPRINTS &
HURDLES***

FUSION™

FASTER STARTS THROUGH
ADVANCED TECHNOLOGY



FUSION F10

THE FUSION DESIGN WAS BUILT WITH EVERY ASPECT OF THE SPRINT START IN MIND, AND THE RESULT IS THE BEST STARTING BLOCK IN EXISTENCE.



OFFICIAL EQUIPMENT SUPPLIER TO THE
2020 TRACK & FIELD CHAMPIONSHIPS

FUSION™ F10 STARTING BLOCK

- Exclusive 8" x 10" pedal allows full heel support for the best starts
- Precise and consistent foot placement is ensured using integrated pedal markings
- Angled spikes in base of pedals guarantee no slipping
- Built in handle allows for easy carriage between locations
- Pedals adjustable to 30°, 40°, 50°, 60°
- Meets NFHS, NCAA and IAAF specifications, IAAF certified

730183C02	Royal Blue		\$524
730183C03	Red		\$524
730183C05	Orange		\$524
730183C12	Black		\$524
730183C15	Dark Green		\$524



Adjust Fusion pedals to four different angles to fit your starting style.



Handle provides easy transport.



MORE FUSION COLOR OPTIONS



FUSION™ F8 STARTING BLOCK

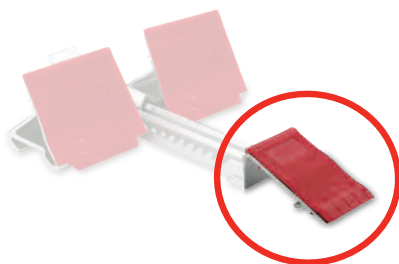
- Exclusive 8" x 8" pedals designed for a more aggressive acceleration pattern
- Meets NFHS, NCAA and IAAF specifications, IAAF certified

730182C02	Royal Blue		\$490
730182C03	Red		\$490
730182C05	Orange		\$490
730182C12	Black		\$490
730182C15	Dark Green		\$490

FUSION™ F4 STARTING BLOCK

- Standard 4" x 8" pedals
- Meets NFHS, NCAA and IAAF specifications, IAAF certified

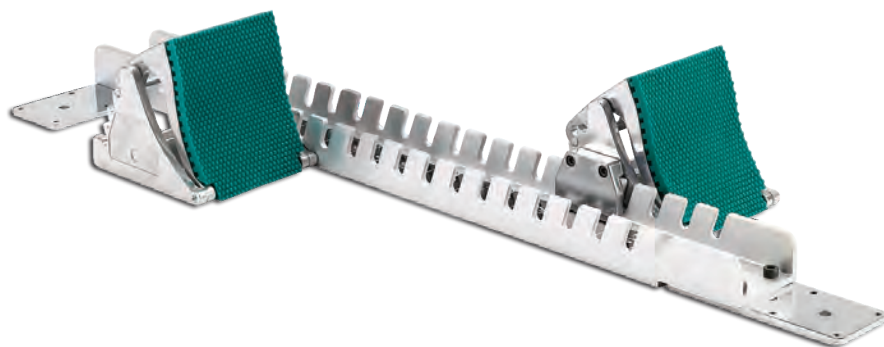
730181C02	Royal Blue		\$412
730181C03	Red		\$412
730181C05	Orange		\$412
730181C12	Black		\$412
730181C15	Dark Green		\$412



MOYE™ PEDAL ADAPTER

Converts any Fusion block into a Moye style block

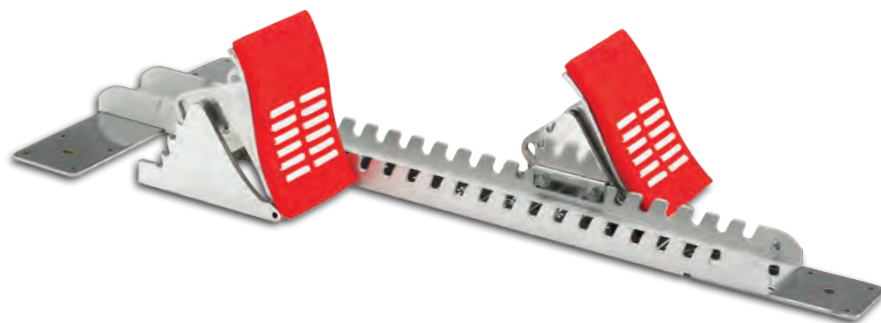
730168 \$71



NATIONAL STARTING BLOCK

- Aircraft aluminum rail with cast aluminum pedals
- Pedals adjust to 45°, 55°, 65°, 75°
- Ruled decal in rail allows quick, easy, repeatable pedal set-up
- Includes 1/2" needle spikes for synthetic tracks
- Meets NFHS, NCAA and IAAF specifications, IAAF certified

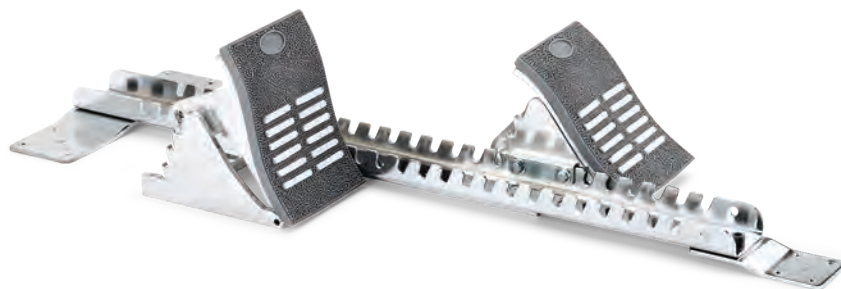
730155  \$270



COLLEGIATE STARTING BLOCK

- Aircraft aluminum construction for maximal lifespan
- Pedals adjust to 45°, 55°, 65°, 75°
- Ruled decal in rail allows quick, easy, repeatable pedal set-up
- Includes 1/2" needle spikes for synthetic tracks
- Meets NFHS and NCAA specifications

410 \$199



SCHOLASTIC STARTING BLOCK

- Polished steel rail with cast aluminum pedals
- Pedals adjust to 45°, 55°, 65°, 75°
- Ruled decal in rail allows quick, easy, repeatable pedal set-up
- Includes 1/2" needle spikes for synthetic tracks
- Meets NFHS and NCAA specifications

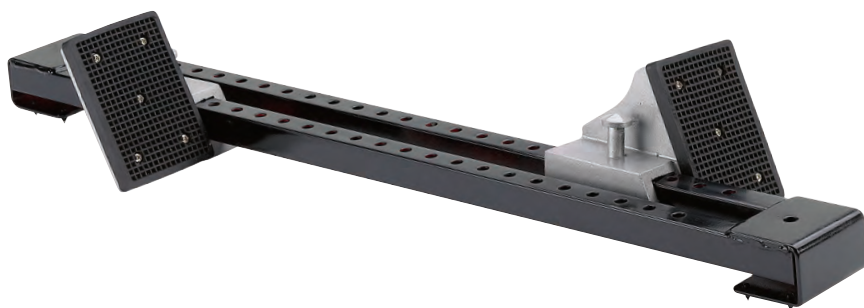
412 \$119



ALL SURFACE STARTING BLOCK

- One piece, sixteen gauge steel with no loose parts
- Slightly wider pedals allow for a wider stance
- Fixed angle pedals with rubber pads
- Change pedal positions with simple Pedal Snap Lock
- Sixteen needle spikes eliminate slipping
- Meets NFHS specifications

414 \$99



ESSENTIALS™ STARTING BLOCK

- One piece, all steel construction with durable black powder coat finish
- Standard width pedals with rubber pads
- Change pedal positions with simple Spring Lock Adjustment
- Features built in spikes to eliminate slipping
- *Meets NFHS specifications*

416 \$79

VP416 \$883

INCLUDED: (1) Essentials Block Cart, (8) Essentials Starting Blocks



INDOOR STARTING BLOCK

- No nails, pins or holes needed to hold in place
- Foot pressure on the flaps provide a non-slip start

417 \$34



GILL® INTERNATIONAL STARTING BLOCK CART

- Holds up to 10 starting blocks horizontally
- Handle is included for easy transport
- Includes a storage shelf for loose pedals and accessories
- Steel construction with durable, architectural gray powder coat finish

733190 \$1625



ESSENTIALS™ BLOCK CART

- Holds up to 10 starting blocks
- Steel construction with durable black powder coat finish

923 \$278



GILL® TRANSPORTER STARTING BLOCK CART

- Holds up to 16 starting blocks; any style
- Large wheels make transportation easy
- Steel construction with durable black powder coat finish

9311 \$727

CONTINUUM™

THE WORLD'S FASTEST HURDLE IS ALSO THE WORLD'S SAFEST



OFFICIAL EQUIPMENT SUPPLIER TO THE
2020 TRACK & FIELD CHAMPIONSHIPS

CONTINUUM™ C4 AUTOMATIC HURDLES

The Continuum™ hurdle is designed to be the safest, fastest, and most unobtrusive hurdle that the rules will allow, all accomplished by placing the gateboard directly over the pivot point (tip-over-fulcrum).

- Internal leg weight from Continuum looping mechanism creates the most reliable, hassle-free automatic hurdle
- Robust frame features reinforced gusseted elbows for unparalleled strength
- Exclusive extrusion gatetubes allow for graphic customization
- Unique inner leg height indicator for no-mistake height settings (30", 33", 36", 39", 42")
- Internalized height mechanism creates whole-unit hurdle reducing maintenance and upkeep
- *Meets NFHS, NCAA and IAAF specifications*
- *5 year warranty*

1041CXX	41" Continuum C4		\$557
1047CXX	47" Continuum C4		\$557

CONTINUUM™ C4 MANUAL HURDLES

Includes all high-end features from the Auto C4 except with manual weight adjustments.

1141CXX	41" Continuum C4 Manual	\$423
1147CXX	47" Continuum C4 Manual	\$423



Easy trigger mechanism creates zero-click continuous transitions from height to height.



On all Gill Hurdles*
Call for Details.

*Excludes Essentials

Automatic Hurdle U.S. Patent
Manual Hurdle U.S. Patent

#9,486,714
#9,427,677

CUSTOM GATEBOARD PRINTING

Customize your hurdle boards with four color printing and show off your hurdles!

946	59 or Less Hurdles	\$79/order
	60 or More Hurdles	FREE



STANDARD GATEBOARD PRINTING

Customize your hurdle boards with standard gateboard printing. Block letters printed in single color.

945	59 or Less Hurdles	\$37/order
	60 or More Hurdles	FREE





NATIONAL ALUMINUM HURDLE

- Constructed of thick extruded aircraft aluminum
- Manual weight adjustment to meet precise official pullover force at each height
- Aluminum powder coated gatetubes and Lexan® gateboard
- Easy stack design for better stacking and portability
- Adjustable heights: 30", 33", 36", 39", 42"
- *Meets NFHS, NCAA and IAAF specifications, IAAF certified*
- **5 year warranty**

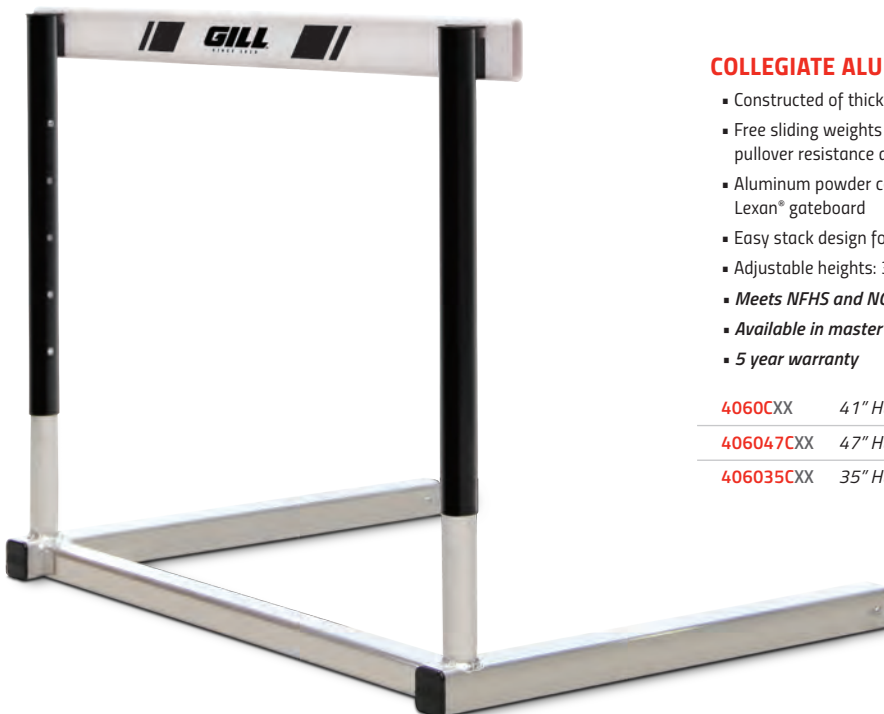
406CXX	41" Hurdle		\$239
40647CXX	47" Hurdle		\$249
40635CXX	35" Hurdle		\$258

Gatetubes available in a variety of bright and durable powder coat colors at no extra cost.

CUSTOMIZABLE HURDLES



**To specify color with order, use the two-digit number of your color selection to replace XX in the item number.
Gray and Black powder coat available in Gloss or Flat



COLLEGIATE ALUMINUM HURDLE

- Constructed of thick extruded aircraft aluminum
- Free sliding weights adjust quickly to official pullover resistance at all heights
- Aluminum powder coated gatetubes and Lexan® gateboard
- Easy stack design for better stacking and portability
- Adjustable heights: 30", 33", 36", 39", 42"
- *Meets NFHS and NCAA specifications*
- *Available in master's competition hurdle sizes*
- **5 year warranty**

4060CXX	41" Hurdle	\$216
406047CXX	47" Hurdle	\$237
406035CXX	35" Hurdle	\$248

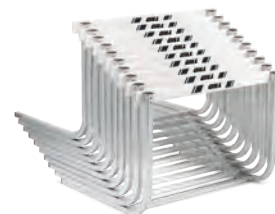


ELITE HIGH SCHOOL HURDLE

- Best selling high school hurdle that sets the premier standard for elite programs
- Aluminum square tube construction
- Welded cross support design provides unrivalled durability
- Aluminum powder coated gatetubes and Lexan® gateboard
- Gatetubes allow for GRAPHIC customization
- Adjustable heights: 30", 33", 36", 39", 42"
- **Meets NFHS specifications**
- **5 year warranty**
- **Ships assembled**

402CXX 41" Elite High School Hurdle \$180

402TCXXSP 41" Hurdle with Gatetube Graphics \$192



Easy stack design for better stacking and portability

CUSTOMIZABLE GATETUBES

See color charts on page 37 to replace the XX in the item numbers.



HIGH SCHOOL HURDLE

- Powder coated steel U-shaped single cross support design
- Single cross support allows for easy carriage and unhindered plyometric drills
- Aluminum powder coated gatetubes and Lexan® gateboard
- Adjustable heights: 30", 33", 36", 39", 42"
- **Meets NFHS specifications**
- **5 year warranty**
- **Assembly required**

403CXX 41" Hurdle \$152

40335CXX 35" Hurdle \$202

SCHOLASTIC ALUMINUM HURDLE

- All aluminum design provides unmatched value for high school programs
- Aluminum powder coated gatetubes and Lexan® gateboard
- Adjustable heights: 30", 33", 36", 39", 42"
- **Meets NFHS specifications**
- **5 year warranty**
- **Assembly required**

411CXX 41" Hurdle \$128

ESSENTIALS™ HURDLE

- Strong all steel construction
- Economical hurdle that meets official pullover resistance at all heights
- Rigid double-crossbar design ensures superior durability
- PVC gateboard
- Adjustable heights: 27", 30", 33", 36", 39", 42"
- **Meets NFHS specifications**
- **1 year warranty**
- **Assembly required**

400CXX 41" Hurdle \$108

TRIPLE GATETUBE HURDLE

- Strong all steel construction
- Hurdle adjusts for competition heights and shorter heights for training purposes
- Lexan® Gateboard
- Adjustable heights: 21", 24", 27", 30", 33", 36", 39"
- **Meets NFHS specifications**
- **1 year warranty**
- **Assembly required**

404CXX 41" Hurdle \$113



GILL® FLIGHT HURDLE CART

- World's most convenient and efficient hurdle cart
- Four wheel design provides superior moveability compared to corner cutting three wheel designed carts
- Sturdy steel construction with durable black powder coat finish
- Efficiently supports up to 10 hurdles at a time

4630	41" Hurdle Cart	\$345
4631	47" Hurdle Cart	\$399



HURDLE CART WEATHER COVER

733630CXX	41" Cart Weather Cover	\$271
733631CXX	47" Cart Weather Cover	\$271
733630CXXSP	41" Cart Weather Cover with Graphics	\$318
733631CXXSP	47" Cart Weather Cover With Graphics	\$318

CUSTOMIZABLE



*To specify color with order, use the two-digit number of your color selection to replace XX in the item number.



HURDLE PORTER

- Easy convenient way to move 8-10 hurdles
- Steel construction with durable black powder coat finish
- Compatible with 'L' shaped hurdles only

4210	41" Hurdle Porter	\$345
42147	47" Hurdle Porter	\$567



HURDLE CART

- Unique walk-in design
- Steel construction with durable black powder coat finish
- Large swivel casters for easy transportation
- Compatible with both rocker and 'L' shaped hurdles

4010	41" Hurdle Cart (Holds 8-10)	\$456
4020	41" Hurdle Cart (Holds 18-20)	\$814
4036	35" Hurdle Cart (Holds 8-10)	\$814

REPLACEMENT GATEBOARDS

Durable Lexan® gateboards. Hardware not included.

P40347	41" Gateboard	\$36
P40349	41" Ribbed Gateboard	\$42
40353	47" Ribbed Gateboard	\$45



FOAM HURDLE BOARD GUARD

- Easily attaches to hurdle for maximum protection against injury

4038G	Guard	\$13/ea
4038G10	Guards (10)	\$120/set

HURDLE STRIDE CHECKER

- Improves athlete's take-off distance
- Provides the coach with immediate feedback on athlete's take-off

4031	\$216
------	-------

**RECORDS
ARE MADE**

**TO BE
BROKEN.**

RYAN CROUSER

GOLD MEDALIST & OLYMPIC RECORD HOLDER

 [@RCrouserThrows](https://www.instagram.com/RCrouserThrows)  [@RCrouser](https://www.twitter.com/RCrouser)



THROWS

THROWS

DISCUS

PACER AND OTE DISCUSES HAVE BEEN USED TO SET WORLD RECORDS AND WIN CHAMPIONSHIPS FOR YEARS.



2204



2203



2202



82420



720201



817

OTE™ CARBON DISCUS

- Recommended for elite throwers
- Aluminum reinforced carbon side plates
- Wide steel alloy rim
- Meets NFHS, NCAA and IAAF specifications
- Patent Pending

2104	1.0K		85%	\$623
2164	1.6K		86%	\$651
2204	2.0K		90%	\$679

OTE™ VHM DISCUS

- Recommended for advanced throwers
- Red anodized aluminum side plates
- Steel alloy rim
- Meets NFHS, NCAA and IAAF specifications, IAAF certified

2103	1.0K		76%	\$279
2163	1.6K		82%	\$291
2203	2.0K		89%	\$327

OTE™ HM DISCUS

- Recommended for advanced throwers
- Precision aluminum side plates
- Steel alloy rim
- Meets NFHS, NCAA and IAAF specifications, IAAF certified

2102	1.0K		72%	\$240
2162	1.6K		78%	\$248
2202	2.0K		82%	\$276

PACER® ORANGE DISCUS

- Recommended for advanced throwers
- Orange ABS plastic side plates
- Steel alloy rim
- Meets NFHS, NCAA and IAAF specifications, IAAF certified

82410	1.0K		84%	\$231
82415	1.5K		84%	\$246
82416	1.6K		83%	\$250
82417	1.75K		86%	\$256
82420	2.0K		89%	\$269

PACER® GOLD DISCUS

- Recommended for advanced throwers
- Gold ABS plastic side plates
- Bronze alloy rim
- Meets NFHS, NCAA and IAAF specifications, IAAF certified

720203	1.0K		78%	\$362
720202	1.6K		81%	\$389
720201	2.0K		84%	\$406

PACER® BLACK DISCUS

- Recommended for intermediate throwers
- ABS plastic side plates
- High quality steel rim
- Meets NFHS, NCAA and IAAF specifications, IAAF certified

819	1.0K		80%	\$192
818	1.6K		85%	\$200
817	2.0K		85%	\$220

HOLLOWOOD STAR™ DISCUS

- Recommended for intermediate throwers
- Straight grained hard rock maple side plates
- High quality steel rim
- Meets NFHS, NCAA and IAAF specifications, IAAF certified

313	1.0K		65%	\$303
305	1.6K		74%	\$331
300	2.0K		75%	\$343



PACER® GHOST DISCUS

- Recommended for intermediate throwers
- Clear plated discus
- Stainless steel rim
- Meets NFHS, NCAA and IAAF specifications

720310	1.0K	80%	\$192
720316	1.6K	80%	\$203
720320	2.0K	80%	\$214

ESSENTIALS™ DISCUS

- Recommended for beginner throwers
- ABS plastic side plates
- High quality steel rim
- Meets NFHS, NCAA and IAAF specifications

82310	1.0K	Pink	58%	\$51
82316	1.6K	Green	61%	\$67
82320	2.0K	Green	67%	\$76



GILL® BLUE DISCUS

- Recommended for beginner throwers
- ABS plastic side plates
- High quality steel rim
- Meets NFHS, NCAA and IAAF specifications

816	1.0K	75%	\$80
815	1.6K	75%	\$90
814	2.0K	75%	\$107



GILL® RED DISCUS

- Recommended for intermediate throwers
- ABS plastic side plates
- High quality steel rim
- Meets NFHS, NCAA and IAAF specifications

312	1.0K	78%	\$90
309	1.6K	80%	\$102
303	2.0K	80%	\$121



RUBBER DISCUS

- Solid one-piece construction
- Tough, durable rubber
- Meets NFHS specifications

310	1.0K	\$20
307	1.6K	\$21
302	2.0K	\$22

INDOOR RUBBER DISCUS

- Solid one-piece rubber construction
- Won't scuff floors or walls
- Meets NFHS specifications

311	1.0K	\$22
308	1.6K	\$24
304	2.0K	\$32

RUBBER DISCUS WITH HANDSTRAP

- Adjustable hand strap
- For training only
- Warning: Practice in a protective cage

81310	1.0K	\$28
81316	1.6K	\$32
81320	2.0K	\$35

COMPETITOR WOOD DISCUS

- Recommended for beginner throwers
- Laminated wood side plates
- High quality steel rim
- Meets NFHS, NCAA and IAAF specifications

317	1.0K	54%	\$62
31601	1.5K	65%	\$64
316	1.6K	67%	\$65
31602	1.75K	68%	\$66
315	2.0K	69%	\$70
81025	2.5K	70%	\$108

OFFICIAL
COMPETITION
REFERENCE GUIDE

High School Girls/Women: 1.0K
High School Boys: 1.6K
College Men: 2.0K

THROWS

HAMMERS

ONE-PIECE
TEXTURED HANDLE

LIGHTWEIGHT
BALL BEARING SWIVEL

ORBITER™ - TUNGSTEN

- Smaller diameter 100% tungsten-filled shell: 125mm for 20lb balls and 156mm for 35lb balls
- One-piece textured handle
- Exclusive lightweight ball-bearing swivel reduces torque and friction during rotation
- Kevlar weight bag
- Plastic injection NBR collar reduces damage potential and allows uninhibited rotation
- 1 year warranty

4959	20 lb	\$2685
4958	35 lb	\$4450

PACER® STAINLESS STEEL HAMMERS

- Includes wire, handle and ball
- Meets NFHS, NCAA and IAAF specifications
- IAAF Certified

738940	4K	IAAF	95mm	\$163
738120	12 lb		103mm	\$174
738160	16 lb	IAAF	110mm	\$201



TRAINING THROWING WEIGHTS

- Top quality turned iron
- Strong steel handle

3920	20 lb	\$205
3925	25 lb	\$247
3935	35 lb	\$274

ORBITER™ - LEAD

- Plastic injection NBR collar reduces damage potential and allows uninhibited rotation
- Sewn strap bag made out of double layered seatbelt polyester material
- Textured handle is the widest the rules allow for increased throwing performance
- 1 year warranty

4947	12 lb	\$285
4948	16 lb	\$301
4949	18 lb	\$303
4950	20 lb	\$346
4952	25 lb	\$357
4954	30 lb	\$368
4955	35 lb	\$454

TURNED IRON HAMMERS

- Includes wire, handle and ball
- Meets NFHS, NCAA and IAAF specifications

3693	3K (6.6 lb)	\$62
36935	3.5K (7.7 lb)	\$63
3694	4K (8.8 lb)	\$66
36945	4.5K (9.9 lb)	\$71
3695	5K (11 lb)	\$77
3612	12 lb	\$74
3696	6K (13.2 lb)	\$80
3614	14 lb	\$81
3616	16 lb	\$82
3618	18 lb	\$92
3620	20 lb	\$98





PERFECT BALANCE SHOTS

- Engineered with exacting specifications for balance
- 100% sweet spot design gives uncompromised throwing distance
- Turned iron material for maximum durability
- Meets NFHS, NCAA and IAAF specifications

3894	4K	IAAF	108mm	\$176
3812	12 lb		115mm	\$200
3816	16 lb	IAAF	128mm	\$229

OFFICIAL
COMPETITION
REFERENCE GUIDE



PACER® STAINLESS STEEL SHOTS

- Machine turned for precision shape and weight
- Meets NFHS, NCAA and IAAF specifications, IAAF certified

735940	4K		95mm	\$119
735941	4K	IAAF	109mm	\$139
735120	12 lb		103mm	\$136
735160	16 lb		110mm	\$155
735163	16 lb	IAAF	129mm	\$188

High School Girls/Women: 4K
High School Boys: 12 lb
College Men: 16 lb



BRASS SHOTS

- Machine turned brass for unmatched design and feel
- Meets NFHS, NCAA and IAAF specifications

3594	4K	95mm	\$144
3512	12 lb	103mm	\$155
3516	16 lb	110mm	\$169

TRAINING SHOTS

- Cast iron material for maximum durability
- Uniform size of diameter allows for ideal training
- Keep the same size diameter as you train with variable weights



TS10830	3K	108mm	\$39
TS10835	3.5K	108mm	\$45
TS10845	4.5K	108mm	\$58
TS10850	5K	108mm	\$64
TS11510	10 lb	115mm	\$54
TS11511	11 lb	115mm	\$58
TS11513	13 lb	115mm	\$69
TS11514	14 lb	115mm	\$77
TS11516	16 lb	115mm	\$93
TS12813	13 lb	128mm	\$64
TS12814	14 lb	128mm	\$69
TS12815	15 lb	128mm	\$75
TS12817	17 lb	128mm	\$85
TS12818	18 lb	128mm	\$91
TS12820	20 lb	128mm	\$104



INDOOR SOFTSHELL SHOTS

- Polyvinyl plastic shell has softer feel for athlete preference
- Fine lead shot filled to exact weights
- Meets NFHS, and IAAF specifications, IAAF certified
- 1 year warranty

3106	6 lb	\$78
3193	3K (6.6 lb)	\$97
3108	8 lb	\$86
3194	4K (8.8 lb)	IAAF \$88
3195	5K (11 lb)	\$114
3112	12 lb	\$102
3196	6K (13.2 lb)	\$120
3114	14 lb	\$114
3115	15 lb	\$123
3116	16 lb	IAAF \$133
3118	18 lb	\$135



INDOOR HARDSHELL SHOTS

- Polyethylene shell will last season after season
- Fine lead shot filled to exact weights
- Meets NFHS, NCAA and IAAF specifications, IAAF certified
- 1 year warranty

3206	6 lb	\$78
3293	3K (6.6 lb)	\$87
3208	8 lb	\$89
3294	4K (8.8 lb)	IAAF \$92
3210	10 lb	\$103
3295	5K (11 lb)	\$106
3212	12 lb	\$109
3296	6K (13.2 lb)	\$112
3214	14 lb	\$112
3215	15 lb	\$117
3216	16 lb	IAAF \$125
3218	18 lb	\$138



CAST IRON SHOTS

- 4K and 12 lb shots guaranteed legal weight and size
- Meets NFHS, NCAA and IAAF specifications

3306	6 lb	\$19
3393	3K (6.6 lb)	\$21
3308	8 lb	\$22
3394	4K (8.8 lb)	\$26
3310	10 lb	\$28
3395	5K (11 lb)	\$33
3312	12 lb	\$30
3396	6K (13.2 lb)	\$38
3314	14 lb	\$39
3315	15 lb	\$40
3316	16 lb	\$41
3318	18 lb	\$52
3320	20 lb	\$57



TURNUED SHOTS

- Machine turned for precision shape and weight
- Meets NFHS, NCAA and IAAF specifications, IAAF certified

34941	4K	100mm	\$61
34944	4K	104mm	\$49
34943	4K	IAAF 108mm	\$52
34121	12 lb	108mm	\$71
34122	12 lb	115mm	\$58
34161	16 lb	120mm	\$90
34162	16 lb	125mm	\$80
34163	16 lb	IAAF 128mm	\$67

TRAINING & ACCESSORIES

SAVE MONEY WITH VALUEPACKS!



BOYS' THROWS HIGH SCHOOL

307	1.6K Gill Rubber Discus (1)
815	1.6K Gill Blue Discus (1)
309	1.6K Gill Red Discus (1)
82316	1.6K Gill Essentials Discus (1)
3312	12 lb Cast Iron Shot (1)
34121	12 lb, 108mm Turned Iron Shot (1)
931	Shot/Discus Carriers (2)

VP200 \$401

GIRLS' THROWS HIGH SCHOOL/COLLEGE

310	1K Gill Rubber Discus (1)
816	1K Gill Blue Discus (1)
312	1K Gill Red Discus (1)
82310	1K Gill Essentials Discus (1)
3394	4K Cast Iron Shot (1)
34941	4K, 100mm Turned Iron Shot (1)
931	Shot/Discus Carriers (2)

VP100 \$350



DISCUS CARRIER

- High quality vinyl discus carrier
- Features a plastic handle and convenient shoulder strap
- Holds 2 discuses or shot puts

931 \$16



2-SHOT CARRIER

- Features a plastic handle and convenient shoulder strap
- Vinyl construction with snap top closure
- Holds 2 shot puts

929 \$18



SCHOLASTIC SHOT CARRIER

- Heavy woven polyethylene rope with plastic handle
- Holds 1 shot put

928 \$10



TRAINING DISCUS

- Customize your training with variable weight
- Easy and quick transition from weight to weight
- Not competition legal, for training only

812 0.85K-1.20K \$114

811 1.40K-1.80K \$128

810 1.75K-2.20K \$155



DELUXE UNIVERSAL IMPLEMENT CARRIER

- Holds any of the three standard throwing implements
- Stores and protects: Shot Put (1), Discus (2), or Hammer (1)
- Great value to protect your throwing investment

9282 \$44



ADD ON WEIGHT

- Use for either hammer or indoor throwing weights
- Economical way to add variable weight to your training without buying more implements
- Adjustable from .5 lb to 2.5 lb

3603 Add on Weight \$26

SHOTS
THROWING WEIGHTS
DISCUS
HAMMERS
JAVELINS



*733100 Shown

INTERNATIONAL IMPLEMENT CARTS

- HDPE liners keep each implement separated and protected
- 8" never-flat rubber casters for easy movement over rough terrain
- Steel construction with durable powder coat finish

733100	Shot Cart (Holds 32)	\$1,465
733110	Throwing Weight Cart (Holds 20)	\$1,465
733200	Discus Cart (Holds 28)	\$1,465
733210	Hammer Cart (Holds 16)	\$1,465
733220	Javelin Cart (Holds 24)	\$1,465



TRACK WAGON

- Conveniently haul a variety of track equipment
- Gates fold down for added convenience
- Large pneumatic tires for rugged terrain travel
- 500 lb capacity to haul even the heaviest of equipment
- 48" long x 24" wide x 12" deep x 25" tall

937 Track Wagon **\$268**



*9312 Shown

IMPLEMENT CARTS

9313	Shot Cart (Holds 24)	\$613
9314	Discus Cart (Holds 30)	\$613
9315	Javelin Cart (Holds 26)	\$613
9316	Hammer Cart (Holds 18)	\$613
9312	Discus/Shot/Hammer Combo Cart	\$736



HAMMER HANDLE (ALUMINUM GRIP)

32020 IAAF Approved **\$22**



USA HAMMER GLOVES

- Designed to endure the toughest throwers
- Seamless outside finger designed for unobtrusive fit
- High quality genuine leather

31918	Left	Small	\$22
31917	Right	Small	\$22
31919	Left	Medium	\$22
31922	Right	Medium	\$22
31920	Left	Large	\$22
31923	Right	Large	\$22
31921	Left	X-Large	\$22
31924	Right	X-Large	\$22



HAMMER WIRES

32200	20" Wire	\$12
32300	30" Wire	\$12
32370	37" Wire	\$12
32375	37 1/2" Wire	\$12
32380	38" Wire	\$12
32385	38 1/2" Wire	\$12
32390	39" Wire	\$12
32395	39 1/2" Wire	\$12



2K TURBO HAMMER

- Teaches proper throwing mechanics and fundamentals
- Made of durable nylon with strong grip handle
- Ball made with high grade polyethylene rubber with gel filling and sharkskin surface
- Safe for both indoor and outdoor use

TA1185 **\$113**

2K TURBO SHOT

- Teaches proper throwing mechanics and fundamentals
- High grade polyethylene rubber with gel filling
- Sharkskin grip surface
- Non-marking materials
- Printed uni-grip hand guide for proper positioning

TA1184 **\$61**

JAVELINS



The choice of elite throwers worldwide! OTE javelins are handmade in the USA by the master artisans who are following in the tradition of the world's greatest name in javelin development: Dick Held. The performance potential of OTE javelins is unsurpassed, being used for numerous championship wins and world records.



Gill Athletics is proud to be the exclusive North American distributor of all Nordic javelins. The Nordic Sport javelins are all manufactured with the famous Nordic finish and Nordic quality. Gill manufactures the elite OTE javelins, as well as the championship level Pacer javelins. Both Gill and Nordic provide different level javelins as well as rubber tipped javelins.



Built by the same master craftsmen that make the OTE javelins, Pacer javelins are built to slightly more generous tolerances. These javelins are built for performance and durability, and are suitable for high level competition. Pacer is the brand of choice for coaches seeking great value.



This lower price point line of javelins is recommended for high school level competition offering unsurpassed value. The best quality javelin for a budget-conscious program, Tru-Flight javelins allow athletes to have more efficient practice sessions by purchasing multiple javelins at nearly the same price as a singular higher-priced javelin!

CHOOSING A JAVELIN

STEP 1 Decide if you are purchasing a Rubber Tipped, 600g women's, or 800g men's javelin.

STEP 2 Consider the technical proficiency of the athlete. Javelin throwers who are skilled at flying the javelin will get farther throws when they throw through the point using OTE javelins. Throwers who occasionally miss accurate flights should switch between OTE and Pacer to help learn the fine points of flying the javelin. Beginners will learn quicker with Tru-Flight javelins, and if possible, should occasionally try an OTE to see if they understand how to really make it fly.

STEP 3 Once you have decided which javelin will best maximize your athlete's potential, choose a light, medium, or max relative flex javelin. Generally speaking; the stiffer the javelin, the longer the throw, assuming it is thrown precisely through the point.

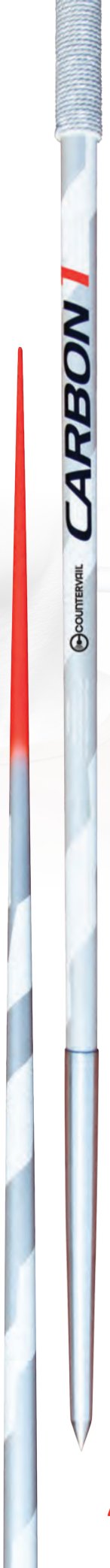
THROW FURTHER

	ATHLETE'S ABILITY	JAVELIN FORGIVENESS
STIFF 4.4 FLEX 100M	High	Low
	Low	High
SOFT 12.6 FLEX 40M		High

Use this chart for help on how to choose the best javelin. Call our experts at 800.637.3090 for more details.



CARBON 1™



Gill Athletics is privileged to announce our exclusive partnership with Countervail® to create the world's most technologically advanced javelin. The OTE Carbon 1 Countervail provides up to a 40% quicker damping rate which results in longer flights with minimal vibration.

The Carbon 1 Countervail is designed after the world-record setting OTE Legend tailwind javelin, and rooted in a patented design by the inventor of modern javelins, Dick Held. Featuring a flex of 4.4 and thicker grip cord for more support and control, this javelin will behave similar to old-rules javelins and appear to "float" when thrown clean.



THE **ONLY** SINGLE-PIECE CARBON JAVELIN IN THE WORLD



CARBON FIBER TECHNOLOGY



THICKER GRIP CORD FOR MAXIMUM PERFORMANCE



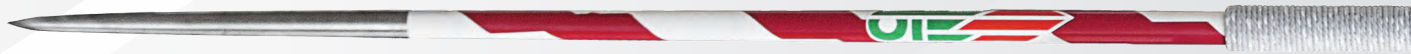
OFFICIAL TRACK & FIELD EQUIPMENT SUPPLIER

JAVELINS



CARBON 1 COUNTERVAIL

2001H	Headwind		80m	5.4 flex	\$1265
2001T	Tailwind		80m	5.4 flex	\$1300



COMPETITION

2695H	Headwind		70m	6.1 flex	\$594
2695T	Tailwind		70m	6.1 flex	\$618



XTRA

2690H	Headwind		60m	6.5 flex	\$560
2690T	Tailwind		60m	6.5 flex	\$583



SPECIAL

2684H	Headwind		50m	6.9 flex	\$526
2684T	Tailwind		50m	6.9 flex	\$549



INTERMEDIATE

2663H	Headwind		40m	7.2 flex	\$492
2663T	Tailwind		40m	7.2 flex	\$514

600G JAVELINS



**nordic
Sport**

7961600	Comet Alu 600		Universal	12.1 flex	\$123
7925600	Viking 600		Universal	11.1 flex	\$227
7915600	Nordic Classic 600		Tailwind	8.5 flex	\$409
7917601	Diana Classic 600		Universal	7.2 flex	\$1050
7917602	Diana Classic 600		Headwind	7.7 flex	\$584
7917600A	Master Alu 600		Universal	7.9 flex	\$486
7917606C	Olympia Carbon 600		Universal	5.9 flex	\$1280
7917603C	Diana Carbon 600		Headwind	5.3 flex	\$1320
7918601C	Valhalla 600		NXS	Hard	\$1380
7918600C	Valhalla 600		NXB	Hard	\$1380
7918603C	Valhalla 600		NXS	Medium	\$1300
7918602C	Valhalla 600		NXB	Medium	\$1300
7918604C	Valkyrie 600		NXS	Medium	\$1210



PACER

760005	Litania®	Universal	40m	8.2 flex	\$270
760011	Comet 45	Headwind	45m	7.0 flex	\$444
760012	Comet 55	Headwind	55m	6.8 flex	\$454



GILL TRU-FLIGHT

35064	Tru-Flight 40	Universal	40m	8.6 flex	\$195
35065	Tru-Flight 50	Universal	50m	8.3 flex	\$216



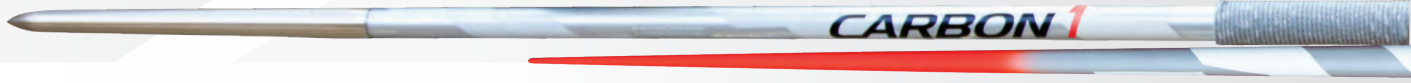
HEADWIND (H) A headwind version of an OTE javelin describes a streamlined tip designed to help cut through the wind. This javelin tip, because of its small surface area, will have self-correcting characteristics when a thrower misses the point, adding valuable distance to a missed throw. The headwind version is ideal for 'power' throwers who lack perfect technique but make up for it with strength and torque.



TAILWIND (T) A tailwind version of an OTE javelin describes a thicker, more blunted tip that increases the surface area in front of the javelin. When a thrower hits the point with a tailwind version of an OTE javelin, it will mimic the old rules style javelins, with a beautiful floating flight and greater distances. This tailwind version is ideal for 'finesse' throwers who lack high outputs of power, yet throw at a high technical level.



JAVELINS



CARBON 1 COUNTERVAIL

3001H	Headwind		100m	4.4 flex	\$1265
3001T	Tailwind		100m	4.4 flex	\$1300



COMPETITION

2885H	Headwind		90m	6.3 flex	\$767
2885T	Tailwind		90m	6.3 flex	\$801



XTRA

2890H	Headwind		80m	6.7 flex	\$722
2890T	Tailwind		80m	6.7 flex	\$756



SPECIAL

2870H	Headwind		70m	6.9 flex	\$594
2870T	Tailwind		70m	6.9 flex	\$629



INTERMEDIATE

2860H	Headwind		60m	7.1 flex	\$553
2860T	Tailwind		60m	7.1 flex	\$587

800G JAVELINS



Nordic Sport

7961800	Comet Alu 800		Universal	11.4 flex	\$141
7922800	Viking 800		Universal	10.4 flex	\$268
7912800A	Master Classic 800		Headwind	7.8 flex	\$613
7913800	Master 800		Universal	7.5 flex	\$575
7916802	Super Elite Classic 800		Tailwind	7.0 flex	\$973
7916805	Champion Steel 800		Headwind	6.4 flex	\$1170
7916803	Airglider Steel 800		Universal	6.1 flex	\$1245
7916808C	Orbit Carbon 800		Tailwind	5.0 flex	\$1310
7916800C	Champion Carbon 800		Headwind	4.8 flex	\$1265
7916803C	Airglider Carbon 800		Universal	4.5 flex	\$1320
7918801C	Valhalla 600		NXS	Hard	\$1460
7918800C	Valhalla 600		NXB	Hard	\$1460
7918803C	Valhalla 600		NXS	Medium	\$1405
7918802C	Valhalla 600		NXB	Medium	\$1405
7918804C	Valkyrie 600		NXS	Medium	\$1260



PACER

780005	Litania®	Universal	50m	8.7 flex	\$357
780050	Astro 50	Headwind	50m	7.4 flex	\$463
780060	Astro 60	Headwind	60m	7.2 flex	\$470
780031	Astro 70	Headwind	70m	6.9 flex	\$477



GILL TRU-FLIGHT

35085	Tru-Flight 50	Universal	50m	8.6 flex	\$216
35086	Tru-Flight 60	Universal	60m	8.3 flex	\$227
35087	Tru-Flight 70	Universal	70m	7.7 flex	\$238





600G RUBBER TIPPED JAVELINS

	2663R	Intermediate RT	40m	7.2 flex	\$492
	2690R	Xtra RT	60m	6.5 flex	\$560
	7968600	Classic Alu RT 600		8.8 flex	\$201
	7955600	Javelin High School 600		Medium	\$303
	7965600	Javelin HS Diana 600		Max	\$389
	760055R	Litania® RT	40m	8.2 flex	\$270
	760211R	Comet 45RT	45m	7.0 flex	\$444
	760212R	Comet 55RT	55m	6.8 flex	\$454
	35164R	Tru-Flight 40RT	40m	8.6 flex	\$195
	35165R	Tru-Flight 50RT	50m	8.3 flex	\$216

RUBBER TIPPED STATES: ALABAMA, NEW JERSEY, NORTH DAKOTA, AND WASHINGTON



800G RUBBER TIPPED JAVELINS

	2860R	Intermediate RT	60m	7.1 flex	\$553
	2870R	Special RT	70m	6.9 flex	\$594
	2890R	Xtra RT	80m	6.7 flex	\$722
	7968800	Classic Alu RT 800		8.7 flex	\$244
	7952800	Javelin High School 800		Medium	\$335
	7916822	High School Master 60 800		Medium	\$389
	7962800	Javelin HS Elite 800		Max	\$506
	7916902	High School Master 70 800		Max	\$399
	780055R	Litania® RT	50m	8.7 flex	\$357
	780250R	Astro 50RT	50m	7.4 flex	\$447
	780260R	Astro 60RT	60m	7.2 flex	\$466
	780033R	Astro 70RT	70m	6.9 flex	\$477
	35185R	Tru-Flight 50RT	50m	8.6 flex	\$216
	35186R	Tru-Flight 60RT	60m	8.3 flex	\$227

J FORCE TRAINING JAVELINS



- 700g weighted training javelin designed with 800g dimensions
- 700g is the ideal tool for injury recovery training
- 900g weighted training javelin designed with 800g dimensions
- 900g is the perfect tool for specific strength adaptation

780700	700g Training Javelin	\$540
780900	900g Training Javelin	\$594

NEW! POCKET JAVELIN



- Replicates the feel of a competition javelin
- Aluminum shaft, rubber ends, and real grip cord
- Balance point that matches that of a competition javelin
- Compact design of 13"
- Designed for indoor and outdoor use

34620	600g Pocket Javelin	\$84
34820	800g Pocket Javelin	\$84



NOCKEN BALLS

- Designed to give you the look and feel of a javelin while throwing indoors

TA105	400g	\$22
TA100	600g	\$30
TA101	800g	\$35
TA1010	1K	\$40



OUTDOOR THROWING BALLS

- Technique and arm speed training balls. For outdoor use.

TA113	400g	\$17
TA114	600g	\$19
TA115	800g	\$20
TA116	1K	\$22
TA117	1.5K	\$23
TA118	2K	\$23



INDOOR THROWING BALLS

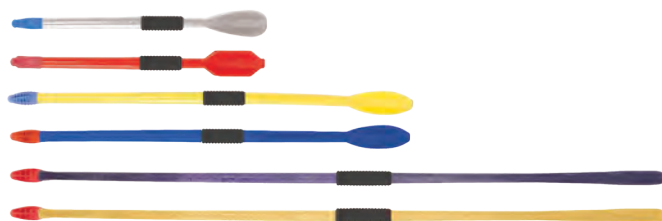
- Technique and arm speed training balls. For indoor use.

TA102	500g	\$19
TA103	600g	\$21
TA104	800g	\$31
TA1041	1K	\$34
TA1042	1.6K	\$36
TA1043	2K	\$37

PETRANOFF JAVELINS

- Designed by former world record holder Tom Petranoff (99.72m)
- Advance from 300g to 800g model

TA1193	300g Turbojav	\$44
TA1194	400g Turbojav	\$47
TA1195	500g Long Tom	\$55
TA1196	600g Long Tom	\$59
TA1187	700g Turbo Spier	\$86
TA1188	800g Turbo Spier	\$82



INDOOR TRAINING JAVELINS

- Air drag cones increase resistance to shorten throw for indoor facilities
- Aluminum shaft with rubber tip for maximum durability

TA1198	600g	\$126
TA1199	800g	\$127



ALL SURFACE TRAINING JAVELINS

- Designed for indoor, outdoor, and turf surfaces
- Get the balance and weight of a competition implement with a durable metal shaft and real grip cord
- Cost effective way to get more practice implements in your training inventory

REAL GRIP CORD!



34610	600g	\$91
34710	700g	\$91
34810	800g	\$91
34910	900g	\$91



JAVEE JAVELIN TRAINER

- Excellent training aid to develop javelin specific strength, flexibility, range of motion
- Use for static and dynamic stretching and warm up routines
- Improve functional length limits for reduced chance of muscle and tendon injuries
- Variable resistance provided by three strong elastic cords
- Grip diameter specific to 600g and 800g sizes

TA1820	600g	\$77
TA1821	800g	\$77



ARCHY ALL SURFACE TRAINING MAT

- Specifically designed to help isolate the shoulder for javelin-specific exercises
- Three different sides create a multi-use training tool for core, flexibility, and technique
- Anti-skid material on bottom of Archy

TA2000	\$442
--------	-------

TRAINING & ACCESSORIES



OTE™ DELUXE JAVELIN BAG

- Holds up to six javelins
- Two hardshell inserts wrapped in ¼" lightweight closed cell foam
- Soft rubber handles and seams held with strong 2" webbing
- Men's length 9'; Women's length 8'

700706 600g Bag \$540

700708 800g Bag \$574



PACER® ADJUSTABLE BAG

- Includes 4 protective tubes
- Holds 5-7 javelins (without tubing), 4 javelins (with tubing)
- Heavy duty Cordura nylon
- Universal fit adjusts to hold 600g and 800g javelins

700803 \$215



HARDSHELL JAVELIN TUBE

- Holds five to seven javelins
- ABS plastic material gives piece of mind when transporting valuable javelins
- Universal fit adjusts between 600g and 800g javelins

700804 \$119



JAVELIN BACK BRACE

- Used by javelin throwers around the world
- Supports throwers and helps them throw far and safe
- Fits waist sizes 28-50" (71-127cm)

4581 \$36



NORDIC BACK BRACE

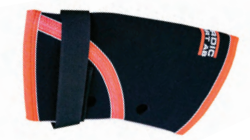
1086292 S, 22" - 28.5" \$168

1086293 M, 28" - 34.5" \$168

1086294 L, 34" - 40.5" \$168

1086295 XL, 40" - 46.5" \$168

1086296 XXL, 46.5"+ \$168



NORDIC ELBOW BRACE

1086392 S, 7.5" - 9" \$78

1086383 M, 8.5" - 12" \$78

1086384 L, 11.5" - 14" \$78

1086395 XL, 13.5" - 15" \$78

IMPLEMENT ACCESSORIES & KITS

REDESIGNED!

IMPLEMENT CERTIFICATION KITS

- Official-friendly design assures each implement meets specifications
- Laser cut stainless steel gauges for extreme accuracy and permanency
- High School gauges are 1/4" polycarbonate for durability and grip
- Labeled tabs on each gauge helps organize the process
- Self-contained unit packaged in one convenient case

93051	High School Certification Kit (1K, 1.6K discs; 4K, 12 lb shot put)	\$499
93066	Javelin Certification Kit (all javelin competitions)	\$644
93075	NCAA Certification Kit (1K, 2K discs; 4K, 16 lb shot put; 4K, 16 lb hammer; all javelin competitions)	\$3545
93080	IAAF Certification Kit (1K, 1.5K, 1.75K, 2K discs; 4K, 5K, 6K, 16 lb shot put and hammer; all javelin competitions)	\$3950



GILL® IMPLEMENT SCALES

- Quickly, easily and accurately measure the weight of any track implement
- Works for javelin, discus, hammer, shot, and indoor weight
- Easy zero reset for calibration prior to weighing
- Read out in English or Metric system

93015	Up to 15K/33 lb	\$432
93020	Up to 20K/44 lb	\$743
93021	Scale Ring	\$23



ESSENTIALS™ IMPLEMENT SCALE

- Large 55 lb capacity scale with 'easy press' buttons
- Includes digital auto calibration and full range tare/zero function
- Read out in English or Metric system

93010	Essentials™ Implement Scale	\$109
--------------	-----------------------------	--------------



INDOOR THROWING WEIGHT GAUGE

- Easily check the length of indoor weight throw implements
- Adjustable knob assists in the quick calibration of the gauge before each use

93035	\$303
--------------	--------------



SHOT/HAMMER RETRIEVER

- Ideal for quick, painless pick-up of shots and hammers
- Multi-adjustment height for ergonomic use

940	\$36
------------	-------------

SHOT AND DISCUS MARKERS

- Large three square-inch writing surface
- Ample room to write athlete's name or number
- Extra strong pointed base for fast placement
- 7 1/2" long
- 18 gauge steel

932W	Marker	\$5.50/ea
932W12	Markers (12)	\$34/set



A red-tinted photograph of a mountain range. In the foreground, a utility pole stands on the right side. The mountains are in the background, and the overall scene is covered in a solid red color.

TAKE

THE LEAD.



MEETS

ELECTRONICS & INDICATORS



OFFICIAL EQUIPMENT SUPPLIER TO THE
2020 TRACK & FIELD CHAMPIONSHIPS

TIMER AND DISPLAY

- Lightweight with rugged rubber bumpers for increased durability
- Countdown timer has various pre-programmed times
- Three brightness intervals adjust to your specific needs
- Also used as an elapsed time clock for CC, road races, and the track
- Countdown can be set for durations up to 99 minutes
- Anti-glare 6" x 3" digits
- Includes tripod, 120V adapter plug, and 12V internal battery
- External battery can be connected if needed
- Connect to Gill Ultrasonic Wind Gauge to display wind reading continuously or at 10 second intervals



E49821	<i>Single Sided</i>	\$1120
E49822	<i>Double Sided</i>	\$1510
E39820B	<i>Optional External Battery</i>	\$82



ULTRASONIC WIND GAUGE 2.0

- Highly visible backlit display improved for officials accuracy
- Use as standalone, or designed for smooth interface with Lynx systems
- Special cable from Lynx required for Lynx interface
- Includes tripod, AC adapter, and padded protective case
- IAAF: ultrasonic wind gauges shall be used at all International Competitions (Rule 1.1 (a) through (h))

E49810 **\$2510**



COMPACT WIND GAUGE KIT

- Displays Wind Reading in Meters Per Second
- Accuracy: +/- 0.010 m/s
- Meets NFHS, NCAA, and IAAF specifications
- Includes tripod and carry case

E39815 **\$401**



COMPACT WIND INDICATOR

- Designed to indicate relative strength of wind at point of use
- Unintrusive economical design, gets the job done without breaking the budget
- Guides athletes to jump safer (pole vault) and farther (long jump/triple jump)

726 **\$168**



E49872



728

2 DIGIT ELECTRONIC DISPLAY

- Use as a PV standard indicator, wind reading indicator unit, or lap counter.
- 6" digits with 3 stage dimming feature
- Quality carry/storage case included
- Lap Counter Display Stand sold separately

E49872 2 Digit Electronic Display **\$557**

728 Lap Counter Display Stand **\$324**



79200



79300



79400



79100

PERFORMANCE INDICATORS

- 9" numerals
- Rotates 360° for visibility
- Aluminum construction with steel roll away base
- Powder coated black

79300 2 Digit Lap Counter w/ Bell **\$665**

79400 2 Digit Pole Vault Display **\$744**

79100 4 Digit Scholastic Performance Indicator **\$840**

79200 5 Digit National Performance Indicator **\$994**



LYNX COMPATIBLE
EAGLE EYE COMPATIBLE

LED SCROLLING DISPLAY

- Displays event standings, upcoming races and more
- Update information easily with provided software
- Software is designed to run in background when using Lynx, scrolls track event times/places as Lynx System files results
- Sixteen 4" tall characters maximum displayed at one time
- Power options: 120V power cord (included) or 12V battery (sold separately)
- Carrying case included

E39860 Scrolling Display **\$2255**

E39820B 12V Battery **\$82**



LYNX COMPATIBLE
EAGLE EYE COMPATIBLE

GILL 9" DIGIT RACE CLOCKS

- Six digit race clocks in 9" tall digits
- Count-up/count-down capability in seconds or hundredths of seconds
- Features end-mounted controls for direct operation
- Power options: 120V AC (included) or external 12V battery (sold separately)
- *Optional carrying case available (sold separately)*
- *Tripod and remote control included*

E39851 Race Clock **\$1735**

E39853 Double-Sided Race Clock **\$2435**

E39858 Carrying Case **\$524**

E39820B 12V Battery **\$82**

MEETS

MEASURING DEVICES



FIBERGLASS MEASURING TAPES

- Durable vinyl-coated fiberglass tape
- More flexible than cloth tapes and won't kink or break when twisted or stepped on
- Measures in both English and Metric units
- C = closed reel; O = open reel

984	50' (15m)	C	\$11
985	100' (30m)	C	\$16
987	165' (50m)	C	\$24
986	200' (60m)	O	\$30
988	300' (90m)	O	\$46
989	330' (100m)	O	\$50



STEEL MEASURING TAPES

- Coated with durable epoxy finish
- C = closed reel; O = open reel

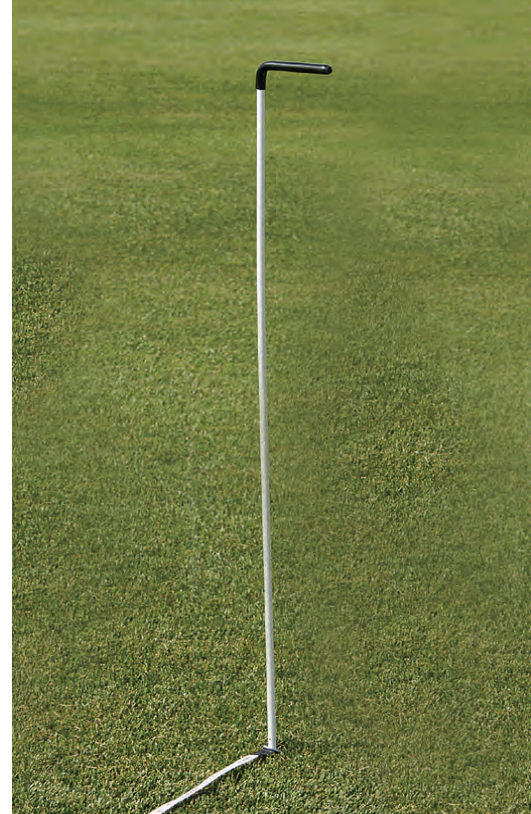
980	50' (15m)	C	\$25
981	100' (30m)	C	\$35
983	300' (90m)	O	\$96
971	330' (100m)	O	\$100

MEASURING TAPE KIT

For all your measuring needs, includes:

- 988 (1)
- 985 (2)
- 984 (1)

982	Measuring Tape Kit	\$87
-----	--------------------	------



TAPE STAKES

- Handy tool attaches to end of measuring tape for convenient use
- Used for all throwing and horizontal jumping events
- Set of 4

970	\$43/set
-----	----------



REDESIGNED!

HORIZONTAL JUMPS LASER MEASURING DEVICE

- Provides accurate measurements for both Long Jump and Triple Jump
- Leica Measuring Device reads both English and Metric units
- Constructed with a 6 meter aluminum rail and weighted steel bases

E73740	\$3200
--------	--------

After aligning the targeting laser with the landing, simply push a button on and read the measurement.



LASER DISTANCE MEASURING SYSTEM

- Accurate laser measuring device for throwing events
- Center the mounted laser after each attempt and aim at the target
- Accurate readings to the nearest 1/8"
- Fully compliant with NFHS, NCAA and IAAF specifications

E737	\$3345
------	--------

EVERYTHING YOU NEED IN ONE SIMPLE PACKAGE

ETHERLYNX VISION™ CAMERA PACKAGES BY LYNX

- **All packages contain everything you need.** Each package is a complete photofinish and timing solution for your track meets. All you add are the athletes and a computer!
- **All systems can run on any Windows computer** equipped with an Ethernet connection
- **All systems include the new FinishLynx EASYALIGN™ technology** that shows a full-frame video view of the finish line for fast and accurate camera placement
- **All systems take full color pictures** for easier athlete identification
- **All systems use power-over-Ethernet**, so no dedicated AC power is required at the camera location. A single Ethernet cable transfers all data AND provides camera power
- **All packages include LYNXPAD Meet Management software** - this integrates with multiple online meet entry websites, including Athletics.net and DirectAthletics.com



THE SCHOLASTIC SOLUTION	THE BRONZE SOLUTION	THE SILVER SOLUTION	THE GOLD SOLUTION	THE MVP SOLUTION
<ul style="list-style-type: none"> ▪ 5L510 EtherLynx™ Camera ▪ 600 Standard Frame Rate ▪ 6mm fixed lens <p>INCLUDES: <i>All camera connection and power cables</i></p> <p><i>Custom FinishLynx Carrying Case</i></p> <p><i>Tech Support & 1-year renewable warranty</i></p> <p><i>Camera Tripod and mounting hardware</i></p> <p><i>FinishLynx Lite software with support for RadioLynx Wireless Start (E39916)</i></p> <p>E39905 \$5000</p>	<ul style="list-style-type: none"> ▪ 5L500 Vision EtherLynx™ Camera ▪ 1000 Standard Frame Rate ▪ Manual Zoom lens <p>INCLUDES EVERYTHING FROM THE SCHOLASTIC SOLUTION, PLUS: <i>Full FinishLynx32 software with support for RadioLynx Wireless Start (E39916), Lynx Software Plug-in(s), multiple FinishLynx Cameras, IdentLynx 2-D video camera, scoreboard interface for display of running time & results, and wind gauge interface for automatic wind reading data import</i></p> <p>E39906 \$7500</p>	<ul style="list-style-type: none"> ▪ 5L500 Vision EtherLynx™ Camera ▪ 2000 Standard Frame Rate ▪ Motorized Zoom lens <p>INCLUDES EVERYTHING FROM THE BRONZE SOLUTION, PLUS: <i>Automatic capture & virtual photocell plug-in</i></p> <p><i>High resolution (2000 fps) images</i></p> <p><i>Remote positioner (remote camera adjustment)</i></p> <p><i>Motorized lens (remote lens adjustment)</i></p> <p>E39903 \$11300</p>	<ul style="list-style-type: none"> ▪ 5L500 Vision EtherLynx™ Camera ▪ 2000 Standard Frame Rate ▪ Motorized Zoom lens <p>INCLUDES EVERYTHING FROM THE SILVER SOLUTION, PLUS: <i>RadioLynx Wireless Start System</i></p> <p><i>Power over Ethernet network switch</i></p> <p><i>IdentLynx full frame video camera</i></p> <p><i>9-digit alphanumeric scoreboard</i></p> <p>E39901 \$17000</p>	<ul style="list-style-type: none"> ▪ 5L500 Vision EtherLynx™ Camera ▪ 2000 Standard Frame Rate ▪ Motorized Zoom lens <p>INCLUDES EVERYTHING FROM THE GOLD SOLUTION, PLUS: <i>IAAF approved sonic wind gauge</i></p> <p><i>A second 1000 fps 5L500 Vision EtherLynx™ camera (reverse angle/alternate finish line)</i></p> <p>E39920 \$25000</p>

* FinishLynx Systems are licensed and cannot be returned.

TRACK ACCESSORIES



CONE MARKERS

• Durable, flexible PVC

F451	2"	\$2.25	999	12"	\$9.50
975	4"	\$5.25	976	18"	\$14
TA9756	6"	\$5.25			



730310



ALL NEW LOOK!

GILL® LANE MARKERS

- Lightweight markers are easy to stack and carry
- Stable 3-sided design provides great visibility
- 28" tall with convenient hand hole for quick set up
- Custom graphics available

73090	Lanes 1-8	\$1250/set
73090SP	Lanes 1-8, Custom	\$1460/set
730909	Lane 9 Only	\$162/ea
730909SP	Lane 9 Only, Custom	\$188/ea
730910	Lane 10 Only	\$162/ea
730910SP	Lane 10 Only, Custom	\$188/ea

LJ & TJ TAKE OFF BOARD MARKERS

- Guides athletes to the horizontal jumps take-off board
- Made of safe collapsible plastic material

730310 \$108/set



HORIZONTAL DISTANCE INDICATOR BOARDS

- Visual gauge of jump distance
- Made of safe collapsible plastic material
- Lightweight for easy transportation and storage
- Custom graphics available for additional charge

730721	LJ Boards English (16'-30')	\$498
730722	LJ Boards Metric (5m-9m)	\$498
730741	TJ Boards English (38'-55')	\$606
730742	TJ Boards Metric (12m-17m)	\$606

BATONS

Individual	\$4.25	Set of 8	\$33
43101	Gold	431018	Gold
43102	Orange	431028	Orange
43104	Silver	431048	Silver
43105	Red	431058	Red
43106	Purple	431068	Purple
43107	Green	431078	Green
43108	Blue	431088	Blue
43109	Black	431098	Black
433	White Plastic	430	Assorted



GILL® DISTANCE MARKERS

- Lightweight durable plastic material
- Stable 3-sided design provides 360 degree visibility
- 18" tall letters
- Custom graphics available*

Individual Markers		\$159
Individual Markers with Graphics*		\$182
730912	12m/39'	730930 30m/98'
730914	14m/46'	730940 40m/131'
730916	16m/52'	730950 50m/164'
730918	18m/59'	730960 60m/197'
730920	20m/66'	730970 70m/230'
730922	22m/72'	730980 80m/262'
730924	24m/79'	730990 90m/295'

*Add "SP" to end of part number. Example: 730912SP



SCHOLASTIC DISTANCE MARKERS

- Ultra light expanded vinyl material
- 13" x 16" with quick stack & light carry characteristics
- 11" letter height

941 Set of 13 \$518

Individual Markers		\$41
941030	30"	941100 100'
941035	35'	941120 120'
941040	40'	941140 140'
941045	45'	941160 160'
941050	50'	941180 180'
941055	55'	941200 200'
941060	60'	



TEAR TAG NUMBERS

- Made of Tyvek® material for unsurpassed durability
- 7 ½" x 7 ½" numbers feature a 3 ½" numeral and 2" detachable tag
- Sets of 100

92300	#001-100	\$41
92301	#101-200	\$41
92302	#201-300	\$41
92303	#301-400	\$41
92304	#401-500	\$41



CUSTOMIZED COMPETITOR'S NUMBERS

- Feature your school name and/or event
- Made of Tyvek material for unsurpassed durability
- Sets of 100

730400	5 ½" x 7 ½"	\$33/set
730410	7 ½" x 7 ½" * * with Detachable Tag	\$40/set



HIP NUMBERS

- Necessary for photo finish timing
- 3 ½" digit on a 4" x 3" label
- No-residue adhesive labels

921	Hip Numbers 1-9 (25 of each)	\$24/set
922	Hip Numbers 1-18 (25 of each)	\$37/set

SAFETY PINS

910	144 ct.	\$11
91010	1440 ct.	\$52

COMPETITOR'S NUMBERS

- Made of 100 lb 'Tuff Tear' paper tag stock
- 5 ½" x 8 ½"
- Sets of 100

Competitor's Numbers		\$16/set	
900	#001-100	903	#301-400
901	#101-200	904	#401-500
902	#201-300	909	#901-1000



INDIVIDUAL HIP NUMBERS

Sets of 100		\$11	Rolls of 250		\$22
92101	#1	92110	#10	92201	#1
92102	#2	92111	#11	92202	#2
92103	#3	92112	#12	92203	#3
92104	#4	92113	#13	92204	#4
92105	#5	92114	#14	92205	#5
92106	#6	92115	#15	92206	#6
92107	#7	92116	#16	92207	#7
92108	#8	92117	#17	92208	#8
92109	#9	92118	#18	92209	#9
				92210	#10
				92211	#11
				92212	#12
				92213	#13
				92214	#14
				92215	#15
				92216	#16
				92217	#17
				92218	#18

BEST VALUE!



SPIKE KIT

Storage case and 1500 spikes

- 4 x 842 spikes
- 3 x 840 spikes
- 2 x 83602 spikes
- 2 x 83601 spikes
- 2 x 843 spikes
- 2 x 838 spikes
- 1 x 846 t-handle wrench

850 \$177



STEELEX SPIKES

- Case hardened steel with blue coat provides extreme durability and extended life
- Hex-base for easier installation and removal
- Bags of 100

83500	½" Spike Wrench	\$11
83511	Spikes: ⅛"	\$15
83512	Spikes: ⅜"	\$15
83513	Spikes: ¼"	\$15
83514	Spikes: ⅝"	\$15



PYRAMID NEEDLE BLANK

SPIKES

Bags of 100, unless otherwise noted

842	Pyramid: ¼"	\$11
8401	Needle: ⅛"	\$11
83601	Needle: ⅜"	\$11
838	Needle: ¼"	\$11
839	Needle: ⅝"	\$11
840	Pyramid: ⅛"	\$11
83602	Pyramid: ⅜"	\$11
841	Pyramid: ½"	\$11
843	Pyramid: ⅝"	\$11
844	Pyramid: ⅞"	\$11
848	Blanks	\$11
837	Javelin: 1" (20 ct.)	\$11



SPIKE WRENCHES

845	3-Way	\$5
846	T-Handle	\$12
849	Spike Gauge	\$31



45W MEGAPHONE

45W Megaphone with range of up to 800 meters.
Requires 10 "D" batteries (17 hours of use. Not included).

731 \$479

ELECTRONIX STARTING DEVICE

- Battery operated starting pistol eliminates the need for blanks
- Pistol comes with auxiliary cable and case
- Strobe light tip flashes when the gun is fired to offer a visual signal for hand timing
- Uses three "AA" batteries (not included)
- Connects to a megaphone or speaker to sound (not included)
- *FinishLynx and Eagle Eye compatible!*

E39846 \$238



STARTERS SLEEVE

Highly visible from any part of the track. Bright orange with elastic at both ends for a sure fit.

423 \$11

STARTING BLANKS

42701	.22 Cal. Crimped (100 rds.)	\$44
429	.32 Cal. Gator Blanks (50 rds.)	\$66
42801	.32 Cal. Crimped (100 rds.)	\$98
39603	Pyro Bright Shells (50 rds.)	\$62



ALFA COMPETITION STARTING PISTOLS

- Zinc-aluminum frame finished in rust resistant nickel
- High strength heat-treated steel parts promise trouble free usage
- Bright orange grips and barrel cap eliminate confusion with a firearm
- Rugged and reliable with swing out 6-round cylinder for easy load and unload
- *Limited Lifetime warranty*

425	.22 Cal. Pistol	\$336
426	.32 Cal. Pistol	\$346



GILL® COMPETITION STARTING PISTOLS

- Inexpensive yet durable starting pistols
- Feature free spinning cylinder necessitating to cock the hammer before firing
- Holds 8 rounds

42510	.22 Cal.	\$120
42610	.32 Cal. (holds 5 rds.)	\$128

TIMEKEEPING FOR ANY SIZE EVENT

ULTRAK L10 MULTI-LANE TIMER

- Compatible with Hytek Meet Management Software
- Times races with up to 10 lanes
- Times road races with up to 8,000 participants
- Prints bib number, lane, place, and time
- Includes linkgate, eliminating tangled cords to L10
- Includes Windows interface and 2 rolls of paper
- **2 year warranty**

37932	8-Lane Timer	\$814
37934	Extra Button	\$26
37935	Paper Refills (3)	\$31



SEIKO S149 STOPWATCH WITH PRINTER

- 300 dual split memory
- Saves multiple events into memory
- Large-sized 3 line display
- Auto start function
- Prints 13 digits per line at 1.5 per second
- Battery life indicator
- Includes 2 rolls of paper
- **3 year warranty**

37801	Stopwatch and Printer	\$535
37805	Paper Refills (5)	\$14



ROBIC SILVER 2.0

- Event, lap or split timing
- 1/100 second precision to 10 hours
- Two finish time memory recall
- **1 year warranty**

37923 \$21



ULTRAK 310

- Functions: start, stop, reset
- Measures 10 hours
- **3 year warranty**

33106 Set of Six \$60



ROBIC SC-505W

- Twelve (12) memory recall
- Lap, split or single event timing
- 1/100 second resolution to 24 hours
- **1 year full factory warranty**

37603	Single	\$33
37604	Set of Six	\$193



ROBIC SC-606W

- 50 dual split memory recall
- Lap, split or dual split timing
- Multi-function countdown timer; stop, repeat or count-up modes
- **1 year full factory warranty**

37602 \$43



ULTRAK 830 HEAT INDEX

- Accurately calculates temperature, humidity, heat index and dew point
- 30 dual split recallable memory
- Measures to 10 hours with 1/100 second resolution
- Solar powered with back-up lithium battery
- **5 year warranty**

3830 \$47



BEST SELLER!

ULTRAK 495

- 100 dual split recallable memory
- Measures up to 10 hours
- Continuous display of event time
- Allow for split in recall mode
- Water resistant
- **5 year warranty**

37904	Black	\$51
37904Y	Yellow	\$51



ROBIC SC-899

- Up to 540 memory recall
- 3 fully loaded time keeping modes
- 1/100 second precision to 1 hour
- Speed timer in mph/kph
- On-demand EL backlight for low light or no light use
- Lithium battery
- **1 year warranty**

37611 \$72



ULTRAK BTS - BLUETOOTH

- Compatible with both Apple and Android smartphones
- 750 dual split memory recall, measuring to 10 hours in 1/100 second precision
- Countdown timer, pacer, stroke frequency and calendar functions
- **5 year warranty**

37912 \$113

TRACK ACCESSORIES



FINISH LINE TAPE

- Lightweight and easy to break
- 50 yd roll

974 \$5.25



INTERNATIONAL FINISH POSTS

- Heavy duty steel with folded square bases
- Wheeled bases for easy mobility
- Big, bold letters for clear visibility

721 \$562/pr



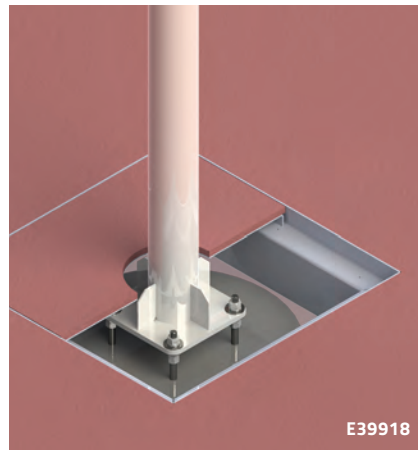
STARTER'S ROSTRUM

- Provides starting official with enough height to view all lanes
- Stable design for safety

860 \$884



E39917 Shown



E39918

CAMERA MOUNT POLE

- Custom Height Settings
- Durable powder coat finish

E39917 *Portable* \$1090

E39918 *Ground Sleeve* \$1090



TIMERS AND JUDGES STAND

- Holds 10 people seated or 20 standing
- Five rows of 48" long steps
- Rail support along back for safety
- Red enamel finish with galvanized seats, footrests and backrest
- Easy mobility provided by 8" diameter wheels on back

995 \$1460

TRACK MAINTENANCE



3-LANE TRACK GATE

- Discourage joggers from using three inside lanes causing premature and uneven wear
- Easy lift and rotate to allow training on inside lanes
- Locks into place
- Includes ground sleeve
- Available in custom color, see chart on page 87

8540	3-Lane Track Gate	\$1445
8540CXX	3-Lane Track Gate; color	\$1590
8540P	Track Gate Post Padding	\$126



CROSSOVER ZONE®

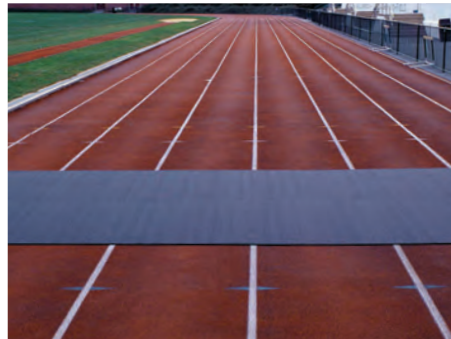
- Lighter and easier to handle than other 'conveyor belt rubber' systems
- Protects against steel tipped cleats, shoes and equipment wheels
- Rain drains through

493667	7.5' x 30'	\$1065
493668	7.5' x 40'	\$1170
493663	15' x 30'	\$1265
493664	15' x 40'	\$1395
493651	15' x 75'	\$1750
493652	15' x 100'	\$1785
493653	15' x 125'	\$2010

TRACK REPAIR KITS

- Repair worn areas of track or field event area
- Includes 18.5 lb of rubber granules and 1 gallon of single-solution, no-mix polyurethane adhesive
- Approximate 11 sq ft coverage

8700	Black Repair Kit	\$475
8701	Red Repair Kit	\$475
8702	Royal Blue Repair Kit	\$475
8703	Green Repair Kit	\$475



ROLLOUT RUNWAY

- Install quickly over worn runway or create a runway where none exists
- No bonding necessary, but can be done if required
- Custom Length (25' minimum) (no returns)

49036	10mm x 36"	\$7.50/ln ft
49048	10mm x 48"	\$9.50/ln ft
49136	12mm x 36"	\$8.50/ln ft
49148	12mm x 48"	\$11/ln ft



SURFACE ROLLER

452 Complete Roller \$121



PIT RAKE

451 Pit Rake \$86



QUICKIE SAND PIT BROOM

453 Sand Pit Broom \$48



PIT SHOVEL

450 Pit Shovel \$45

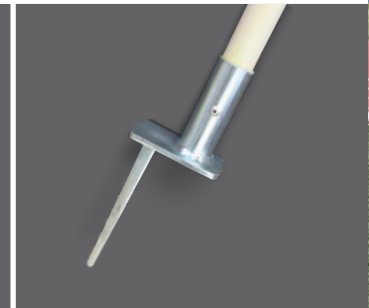
CROSS COUNTRY KIT

Includes: 24 chute posts, 2-110' lengths of chute rope with pennants, 9 directional flags (3 red, 3 blue, 3 yellow) and 9 flag poles.

960	Complete Kit	\$545
961	4' Chute Post	\$12/ea
962	Chute Rope and Pennants (110')	\$24
9650	Flag Pole, Red Flag (Left Turn)	\$38
9660	Flag Pole, Blue Flag (Straight)	\$38
9670	Flag Pole, Yellow Flag (Right Turn)	\$38



968



TURF CHUTE POST

- 12 lb non-invasive chute posts are ideal for turf or golf course

968	Turf Chute Post	\$57/ea
962	Chute Rope and Pennants (110')	\$24

CROSS COUNTRY FINISH LINE BANNER

- Heavy duty vinyl banner attaches to fiberglass uprights
- Width is adjustable from 6'-12'
- Clearance height is 7'

969 \$312

DISTANCE MEASURING WHEEL

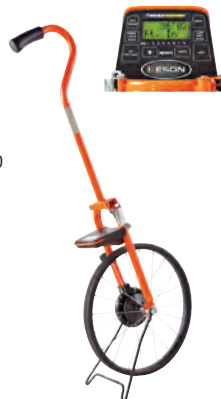
- Handle collapses for easy storage
- Lightweight, durable construction
- Measures up to 10,000 feet
- English Units Only



9703 \$130

ELECTRONIC MEASURING WHEEL

- Durable long-lasting steel frame
- Electronic 7-digit LCD readout is backlit for low light usage
- Patent-pending 'thumb-up' grip ensures less wrist strain and superior control



9701 \$311

CC PACE WHEEL

- Find your athlete's recent race/time trial in the 'Current Fitness' window and that's it!
- Pace wheel reveals aerobic base training pace, marathon race pace, lactate threshold pace, Vo2 max development intervals, and running economy repetitions

998 \$19



DUAL XC MEASURING WHEEL & COURSE MARKER

- Measure and mark simultaneously
- Lightweight tool features a trigger under the pistol grip
- Trigger activates spray paint (not included)
- English units only

9702 \$184





TENT SHOWN: 955215 Tent Canopy, 955210S Side Wall (2), 955215S Side Wall, 955201 Custom Graphics

IMPACT TENTS

- Commercial grade steel frame
- 500 denier polyester canopy and walls
- Water, UV light, and fire resistant
- Roller bag: 600 denier polyester with scuff resistant and waterproof finish
- Tent stake kit and dust coverbag included
- Sidewalls, roller bags, and graphics sold separately

COLORS



TENT CANOPY

955210	10' x 10' Tent Canopy	\$475
955215	10' x 15' Tent Canopy	\$635
955220	10' x 20' Tent Canopy	\$790

SIDE WALL

955210S	10' Solid Side Wall	\$94
955215S	15' Solid Side Wall	\$124

ROLLER BAG

955210B	10' Tent Roller Bag	\$63
955215B	15' Tent Roller Bag	\$94
955220B	20' Tent Roller Bag	\$103

CUSTOM GRAPHICS

Stand out from the crowd with custom screen printed graphics available in 1 to 5 locations! Tent graphic worksheet and vector graphics are all that is needed to show your team pride today! *Price covers 1 to 5 locations, per logo, per color.*

955201	Graphic 10" x 100"	\$222
955202	Graphic 40" x 60"	\$289
955203	Graphic 50" x 90"	\$370

ACCESSORIES

9552WB	Weight Bags (4) (Recommended)	\$44
--------	-------------------------------	------



TOTE BASKET

809	\$18
-----	------



BOOKS

98901	T&F / XC Rules Book	\$14
98902	T&F Scorebook	\$23



STRIKEALERT

- Provides warning for strikes as far away as 40 miles
- Audible alarm and corresponding LED light illuminates to warn you of strike
- Comes with belt clip and runs on single AA battery for up to 100 hours

ELD1000	\$147
---------	-------



OFFICIALS' FLAGS

- Highly visible heavy duty nylon flag with plastic handle
- Flags measure 14" x 13"

730270	Red/White	\$18
730271	Yellow/White	\$18

**MAKE
WINNING**

**SECOND
NATURE.**





TRAINING

PLYOMETRICS



STEEL PLYOBXES

- 1" square steel tubing
- Plywood top platform with 10mm rubber surface
- Anti-skid rubber on base corners prevents slipping and protects floors
- Tapered design allows for stacking and stability

TA3060	6" Plyobox	\$108
TA312	12" Plyobox	\$122
TA318	18" Plyobox	\$136
TA324	24" Plyobox	\$149
TA330	30" Plyobox	\$163
TA336	36" Plyobox	\$176
TA342	42" Plyobox	\$189
TA301	4pc. Plyobox Set (12", 18", 24" & 30")	\$553
TA300	6pc. Plyobox Set (12", 18", 24", 30", 36" & 42")	\$907



LAUNCH PAD

- Allows for more jumps per session
- Steel construction with welded support braces
- Synthetic track material on jump surface
- Track spikes can be installed to ensure no slipping if needed

TA1921 \$757



PLYO RUNWAY MAT

Surface reduces stress of impact on joints and muscles during explosive training sessions.

TA303 3'W x 6'L x 1/2" thick \$97



ARCHED JUMP BOX

- Convex jumping box made of lightweight steel that is easy to carry to and from practices
- Covered in synthetic track material to simulate the same feelings as your track and runways
- 8" high in the middle by 30" wide and 47" long

TA193 \$642



SOFT PLYOBXES

- Standard 28" x 28" blocks
- 3" block is built with 2.2# density polyethylene foam, other sizes with 1.8# which provides stability, shock attenuation, and performance
- Secured for stacking with industrial strength Velcro®
- Durable vinyl cover with two reinforced handles for portability
- Each box weighs less than 28 lb

TA203	3" Soft Plyobox	\$117
TA206	6" Soft Plyobox	\$159
TA212	12" Soft Plyobox	\$225
TA218	18" Soft Plyobox	\$321
TA224	24" Soft Plyobox	\$386
TA225	Set of 5, 1 of Each Size	\$1175



POWER PAD

- Low-impact, energy absorbing foam pad
- 48"L x 48"W x 24"H

TA194 \$836



FLAT JUMP PLATFORM

- Made of lightweight aluminum and covered with synthetic track material
- Easy to transport between practices
- Track spikes can be installed to ensure no slipping if needed
- Platform is 5" x 34" x 19"

TA198 \$428



POWERMAX® VERSA-HURDLE

- Built-in safety feature causes the hurdles to collapse upon impact
- Adjustable from 12" to 42"
- 18 gauge tube steel with durable gate board

100	Hurdle	\$44/ea
101	Versa-Hurdle Bag	\$24



FOAM TRAINING HURDLE

- Ideal training hurdle made of forgiving foam
- Heavy enough to remain upright, yet light enough to be completely portable
- Durable vinyl covering allows for indoor and outdoor use
- Heights: 30", 33", 36", & 39"

409 \$173



SMART HURDLE

Smart Hurdles have a three point base for superior stability on all surfaces. Smart Hurdles are durable, lightweight, and easy to carry.

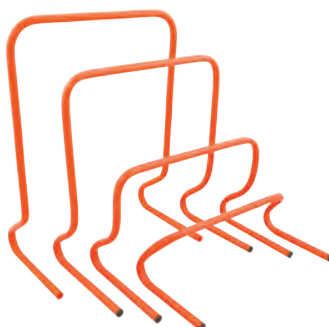
TA18544	21-36" Adjustable Hurdle	\$85
TA18545	27-42" Adjustable Hurdle	\$95



AGILITY ROCKER HURDLES

Weighted base allows hurdles to rock back into the starting position.

TA1676	6" Hurdle	\$22/ea
TA1678	8" Hurdle	\$22/ea
TA16710	10" Hurdle	\$23/ea
TA16712	12" Hurdle	\$23/ea



STEP HURDLES

Constructed of durable, lightweight PVC tubing

TA167	6" Hurdle	\$13/ea
TA1675	6" Hurdles (5)	\$63/set
TA166	12" Hurdle	\$14/ea
TA1665	12" Hurdles (5)	\$68/set
TA16618	18" Hurdle	\$19/ea
TA166185	18" Hurdles (5)	\$93/set
TA16624	24" Hurdle	\$22/ea
TA166245	24" Hurdles (5)	\$107/set



VARIABLE HEIGHT STEP HURDLES

The 2-in-1 hurdle can quickly and easily be adjusted to 2 heights (8"-12") and folds flat for storage.

TA1662	2-in-1 Hurdles	\$14/ea
TA16625	Set of 5 with Bag	\$76
TA16601	Mesh Carry Bag (Holds 5 Hurdles)	\$7.50

The 3-in-1 step hurdle adjusts from (6"-12"-18") and may be disassembled for storage. perform lateral agility moves, forward moves for speed, or plyometrics jumps.

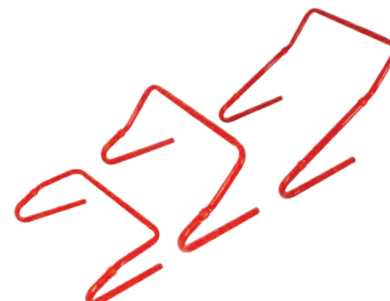
TA1663	3-in-1 Hurdles	\$38/ea
TA16635	Set of 5 with Bag	\$192
TA16601	Mesh Carry Bag (Holds 5 Hurdles)	\$7.50



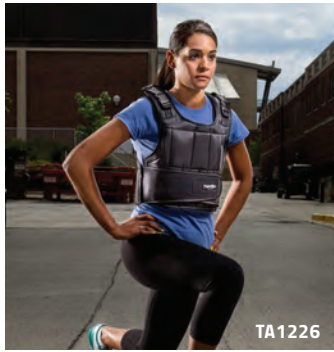
STEP-UP BOX

Perform weighted step-ups safely on this adjustable box. Four height adjustments: 14", 16", 18", and 20". Reinforced plywood top is 20" x 28" and coated with artificial turf. Ships assembled.

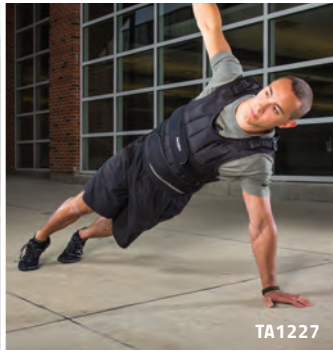
WE160 14"H x 29"W x 28"L, 53 lb \$432



AGILITY TRAINING



TA1226



TA1227

POWERMAX® WEIGHT VEST

- Holds soft double stitched ½ lb weights
- Purchase additional ½ lb packs to fill short vest up to 20 lb or the long vest up to 40 lb
- Moveable shoulder straps 2 ¾" wide with 5 ½" of adjustability
- Short vest fits up to a 40" chest/waist, 18" L x 16" W, long vest fits up to a 57" chest/waist, 23" L x 16" W

TA1226	Short 10 lb Vest	\$109
TA1227	Long 20 lb Vest	\$174
TA1228	10 weight packs (5 lb)	\$31
TA12281	20 weight packs (10 lb)	\$59
TA12282	40 weight packs (20 lb)	\$115



POWERMAX® DRILL MAT

- Press the squares in place to customize the PowerMax Drill Mat
- Create a variety of simple or challenging patterns for the performance of agility drills
- Nine 50cm squares included

TA142 \$86



POWERMAX® WEB LADDER

- Sewn nylon ladder is 16' L x 18" W
- Slats every 18"
- Includes storage bag and 4 ground stakes

TA1696 \$30



POWERMAX® AGILITY LADDERS

- 15' ladder comes in two 7' 6" sections with 10 slats total
- 30' ladder comes in four 7' 6" sections
- Easily connect with other ladders
- 20" wide with 18" between slats, not adjustable
- Includes 1 agility ladder & carry bag

TA1691	15' Agility Ladder	\$55
TA1681	30' Agility Ladder	\$91



POWERMAX® AGILITY DOMES

- Multicolored domes are ideal to mark an agility course
- Durable impact resistant polyethylene
- Includes 40 domes (10 in each color) and storage rack

TA1852 \$77



SMART INDOOR LADDER

- 15' Ladder
- Non-slip rubber, great for gym floors
- Rolls up for storage

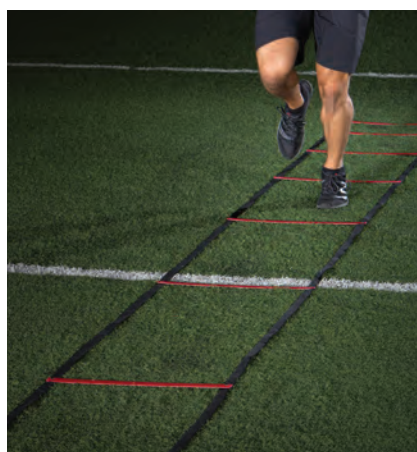
TA1685 \$82



AGILITY RINGS

- Create patterns to challenge footwork or set a pattern of acceleration
- Can be used on a variety of surfaces, ideal on textured surfaces

TA1693 Set of 12 \$54



POWERMAX® ACCELERATION LADDER

- Incrementally increase stride length and frequency
- Increasing stride spacing from 12" to 69"
- All red rungs, black sides, and a carry bag

TA168 37'6" X 20" \$78



AGILITY POLES

- 5' tall poles force athletes to maintain posture
- Includes 4 bases and 4 poles
- Add sand or water to base for additional stability

TA1850 \$98



AGILITY DOTS

- Dots are easy to store and transport
- Easy to see bright colors

TA1694 Set of 6 \$28



SPEED ROPES

- Stainless steel cable encased in plastic
- Ball bearing in handles for quick turnover
- Fixed length
- Includes carry bag for easy storage
- Padded handles for comfort

TA128 9' Speed Rope \$17
TA1281 10' Speed Rope \$19

BEGINNER SPEED ROPES

- These PVC ropes feature lightweight plastic handles and high-spin swivels

TA1271 7' (Green) \$6.25
TA1272 8' (Blue) \$6.25
TA1273 9' (Red) \$6.25
TA1274 10' (Yellow) \$6.25

SPEED DEVELOPMENT

MAX BELT

- Features a 3" wide padded heavy-duty Cordura nylon
- Reinforced stitching
- Multiple nylon attachment loops
- Stainless steel hardware

TA1500	<i>S-M (24" - 32" waist)</i>	\$32
TA1501	<i>L-XL (33" - 42" waist)</i>	\$34
TA1503	<i>XXL (43" - 52" waist)</i>	\$35



BULLET BELT™ SYSTEM

- For resistance to improve starting and acceleration mechanics
- Hook & loop closure for easy release giving a contrast workout from resistance to free running
- Adjustable belt

TA138 *Bullet Belt System* **\$119**

POP BELT™

- The Bullet Belt "Pop" release is the basic design in the Bullet Belt series
- Used to train explosive sport-specific skills

TA1383 **\$71**

BULLET BELT SPEED PULLEY

This two-person over-speed trainer features a unique safety release if towed athlete cannot maintain pace. Comes with 30m of cord and a Bullet Belt universal web belt.

TA1381 **\$195**



RESISTANCE TETHER

- Improve speed with resistance running
- Harness attaches to 10' long nylon web cord with handle
- Includes nylon cord and a 3" wide hook & loop closure belt adjustable to 42" waist, and carry bag

TA150 **\$46**

DUAL RESISTANCE TETHER

- One athlete runs while the other provides resistance
- Includes nylon strap attached to two 3" wide hook & loop closure belts adjustable to 42" waist, and carry bag

TA1521 **\$48**

TIRE TETHER

- Can be used to drag tires of different sizes for varied workouts
- Includes nylon strap and hardware to attach tire, 3" wide hook & loop closure belt adjustable to 42" waist, and carry bag
- Tire not included

TA1384 **\$54**



SPRINT START SLED

- Unique design provides for clearance over and around virtually all starting blocks
- Olympic style weight plates may be added to increase resistance. Includes sled, 11' leads, and 3" wide hook & loop closure belt adjustable up to 42" waist
- Designed by University of Idaho head coach Tim Cawley

TA1541 \$334



POWERMAX® SLED

Provides lower body resistance that develops speed and strength for all athletes in all sports. Add the desired weight to determine resistance. Load up to 200 lb. 15" tall post fits 4 Olympic bumper plates. Includes sled, 11' lead, 3" wide hook & loop closure belt adjustable to 42" waist, and instructions. *Weights not included.*

TA154 Sled with Belt \$171
TA156 Sled with Shoulder Harness \$176



LOW DRAG SPEED SLED

- Ideal sled to add incremental resistance to your athletes
- Easy storage
- Weighs less than 7 lb each
- Includes waist belt, nylon leads, carabiners and sled

TA157 \$108



POWERMAX® VARIABLE RESISTANCE CHUTE

The PowerMax VR Chute features a hook & loop closure baffle panel that can be opened or closed to achieve desired resistance. Open the baffle for reduced resistance or close to increase it.

TA163M S/M Gray \$65
TA163XL L/XL Black \$78



TC-TIMER SYSTEM

The TC-Timer is a wireless timing device that enables athletes and coaches to measure time, speed, count repetitions, input test data and save it all in the TC-Timer memory.

- Sends radio transmissions up to 1,000 feet
- Accurate to the 100th of a second
- Equipped with 5 different radio frequencies allowing multiple systems to be used in the same area
- All components fit neatly into a small lumbar pack

E38720 TC Timer System \$2035
E38721 Pair, Additional TC Gates \$856
E38710 Speed-Trap1 Timing System \$846



POWERMAX® PUSH/PULL SLED

The PowerMax Push/Pull Sled is great for versatility and adjustability in speed training.

- USA made 11 gauge steel frame sled
- Space-saving design that is less than 7" high when folded
- Replaceable/removable runners for use on a variety of surfaces
- Quick release pins for fast set-up and breakdown
- Adjustable width push posts (12-21" W x 32" H) and multiple push/pull options
- Sled weighs 45 lb (empty)
- Holds up to 300 lb, center post fits four 45 lb bumper plates

TA155C12 Sled w/Belt + Harness
24" W x 35" L x 35" H (w/post) \$486

SPEED DEVELOPMENT



DUAL SPEED TRAINER

- Two-person assisted overspeed and resistance running kit
- Overspeed training provided to the rear athlete increases both stride length and frequency.
- Includes 20' latex tubing, two 3" wide hook & loop closure belts adjustable to 42" waist, and carry bag.

TA164	20' Medium Tubing	\$127
TA165	20' Heavy Tubing	\$134



DYNAMIC TRAINER

- Keeps resistance around the hips or torso
- 10' elastic tube is covered with nylon webbing, can stretch up to 30'

TA158 \$144



POWERMAX® HIP FLEXOR

- Strengthen hip flexors and upper quadriceps
- Offers resistance to muscle groups during any training session and maintains athlete's pure running form
- Up to three ¾ lb weight bars attached to thigh belts
- Includes thigh belts, six ¾ lb weight bars, 3" wide hook & loop closure belt adjustable to 42" waist, and carry bag

TA1511 \$87



POWERMAX® SAND BAG SET

- Leak proof inner bags hold 20 lb of sand securely (sand not included)
- Inner bags are pre-marked for easy measurement
- Five strategically placed padded handles
- Set includes inner and outer bags, holds up to 80 lbs

TA12241 \$115



SINGLE-SIDED RACK

- Powder-coated steel rack holds up to 5 balls

TA129 52" x 11" x 14" (7 lb) \$122



Fits Powermax® V2 Medicine Balls

DOUBLE-SIDED RACK

- Powder-coated steel rack holds up to 10 balls

TA1292 63" x 22.5" x 9" (27 lb) \$165

CORE STRENGTH



POWERMAX® V2 MED BALLS

- 18 oz. flexible moisture resistant polyurethane shell textured for grip
- Hand-sewn casing design and expert ball construction
- Dimensionally stable, balanced, and maintains the impact absorbing properties
- **One year warranty**

TA1362	6 lb	Ø 14"	\$87
TA1363	8 lb	Ø 14"	\$92
TA1364	10 lb	Ø 14"	\$98
TA1365	12 lb	Ø 14"	\$106
TA1366	14 lb	Ø 14"	\$111
TA1367	16 lb	Ø 14"	\$117
TA1368	18 lb	Ø 14"	\$122
TA1369	20 lb	Ø 14"	\$128



POWERMAX® RUBBER MED BALLS

Synthetic rubber balls suitable for all sports. Can be used indoor and outdoor. Color coded for easy weight identification.

TA106	1K Purple	Ø 6.5"	\$31	TA111	5K Blue	Ø 10.5"	\$65
TA108	2K Yellow	Ø 7.5"	\$39	TA112	6K Orange	Ø 11"	\$71
TA109	3K Green	Ø 9.5"	\$46	TA131	7K Gray	Ø 11.5"	\$87
TA110	4K Red	Ø 9.5"	\$57	TA132	8K Black	Ø 12"	\$101



NON-BOUNCE MED BALLS

Material is made from durable PVC.

TA13204	4 lb	Ø 9"	\$17
TA13206	6 lb	Ø 9"	\$19
TA13208	8 lb	Ø 9"	\$23
TA13210	10 lb	Ø 9"	\$28
TA13215	15 lb	Ø 9"	\$37
TA13220	20 lb	Ø 9"	\$40
TA13225	25 lb	Ø 9"	\$59
TA13230	30 lb	Ø 10 1/4"	\$68
TA13240	40 lb	Ø 10 1/4"	\$97
TA13250	50 lb	Ø 10 1/4"	\$134



POWERMAX® GRIP BALLS

Durable rubber shell with filler and comfortable built in rubber handle. Will not harm rubber floors. Balls are Ø 8" (diameter), grip is 1" x 1 1/4".

TA4002	2 lb	\$34
TA4004	4 lb	\$40
TA4006	6 lb	\$50
TA4008	8 lb	\$59
TA4010	10 lb	\$66



POWERMAX® SWING BALLS

- For swinging, slamming, and rotation drills
- Rope: 1/2" nylon with a 30" handle from stopper to end

TA1332	2K Yellow	Ø 7.5"	\$68
TA1333	3K Green	Ø 9.5"	\$80
TA1334	4K Red	Ø 9.5"	\$95
TA1335	5K Blue	Ø 9.5"	\$112

BODYWEIGHT TRAINING

	Knotted End Hemp	Vinyl Boot End Collegiate	Ball/Knotted Hemp	Vinyl Boot End Dacron	Boot/Knotted Dacron
12' Long	\$335 00113120	\$274 00199012	\$790 00115120	\$320 00118120	\$648 00119120
16' Long	\$346 00113160	\$285 00199016	\$952 00115160	\$335 00118160	\$822 00119160
20' Long	\$357 00113200	\$294 00199020	\$1105 00115200	\$357 00118200	\$973 00119200
24' Long	\$368 00113240	\$306 00199024	\$1270 00115240	\$378 00118240	\$1130 00119240



HEMP CLIMBING ROPES

This 1-1/2" rope contains 12-18% mineral oil lubricant by weight for long life and is securely attached within a heavy-duty steel fitting for years of durability. Optional rubber knots anchored every 12". Collegiate ropes are finished with a vinyl boot.

SOFT DACRON ROPES

Soft Dacron ropes are ideal for elementary physical education programs. The no-twist spun Dacron material is easier on hands than hemp ropes and will wear better than cotton. Hypoallergenic.

ROPE ATTACHMENT METHODS



3 1/2" OD PIPE CLAMP

10970000 \$17



STAPLE PLATE

10340000 For Wood Beams \$23
10341000 For Concrete Beams \$38



STEEL I-BEAM CLAMP

10100100 Fits ≤8" Beams \$52
10100200 Fits ≤17" Beams \$74

ROPE ACCESSORIES



TAMBOURINE

3/8" lacquered plywood tambourine restricts climbing height. Clamp permits fast removal & easy adjustment.

00198000 \$151



ROPE HOIST

Hoist is complete with wall brackets, ceiling attachment, heavy-duty cord and weight. Installs easily, ready to use.

00104000 \$258



SAFETY GUARD

Safety guard prevents the rope from falling if a part fails or wears out.

00110000 \$144



POWERMAX® CONDITIONING ROPES

Ropes help athletes with power generation, strength endurance, and increased cardio development.

- 1.5" or 2" Thicknesses with finished handles to prevent shedding and blistering
- Synthetic fibers
- Optional bracket fits up to 2.125" rope, made of .125" flat steel and round bar

TA1606	1.5" Synthetic Rope - 30'	\$237
TA1607	1.5" Synthetic Rope - 40'	\$279
TA1608	1.5" Synthetic Rope - 50'	\$331
TA1617	2" Synthetic Rope - 30'	\$263
TA1618	2" Synthetic Rope - 40'	\$331
TA1619	2" Synthetic Rope - 50'	\$377





MULTI-STATION WALL-MOUNTED CHINNING BARS

- 10' long chinning bar with three stations
- Mounts 16" away from the wall
- 1" solid steel diameter grip with a durable zinc plated finish
- Design allows for continuous chinning bar installations in 10' long increments with optional add-on section

00196010 10' Solid Steel Chinning Bar \$638

00196013 10' 3 Piece Steel Chinning Bar \$638



WALL-MOUNTED CHINNING BAR

- 50" wide by 21" tall with 1" grip diameter
- Bar is 22" away from wall/ceiling
- 48" mounting centers
- Black powder coat finish
- *Hardware not included*

WE179 \$219



PEG BOARD CLIMBERS

- 1½" Thick gloss finished hardwood
- Rectangle has 11 holes spaced on 10" centers. Holes are arranged in 2 rows with staggered alignment
- Square has 16 holes spaced on 7½" centers in a 4 x 4 grid pattern
- Two ø1½" x 6½" wood pegs included
- Mount directly to the wall or use optional mounting brackets
- *Hardware not included*

00188 Rectangle 15" x 60" \$490

00189 Square 30" x 30" \$490

001881 Pair, Mounting Brackets \$145

001891 Pair, Wood Pegs \$24



ADJUSTABLE CHINNING BAR

- 1" Grip diameter
- Bar is 22" away from wall
- 48" Mounting centers
- Black powder coat finish
- *Hardware not included*

00197100 \$400



AB BUSTER STRAPS

- Improve core strength and stability with suspended core exercises
- Heavy duty woven nylon with steel grommets and carabiners
- Straps are padded with a washable brushed lining for comfort

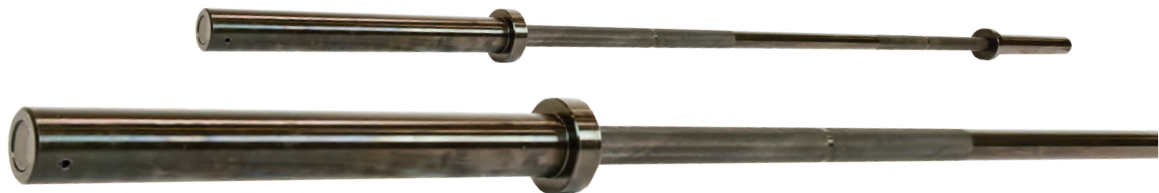
WE242 \$93

WEIGHT BARS & PLATES

POWER BAR

- 86" Black oxide steel
- 45 Lb weight
- 32 Mm grip diameter
- 1200 Lb weight rating
- Lifetime warranty against bending

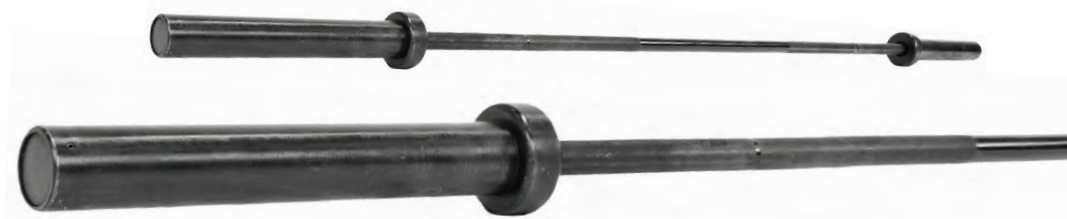
WT1203 \$357



WOMEN'S HYBRID BAR

- 79" Carbon steel bar
- 33 Lb weight
- 25mm grip diameter
- 400 Lb weight rating

WT1216 \$335



92 1/2" L x 16" W x 5" H, 66 lb

CAMBERED SQUAT BAR

This bar allows squats to be done in a more vertical posture, producing intensified quadriceps involvement. Cambered end design relieves much of the lower back stress normally associated with a back squat. All steel design with padded shoulder harness.

WT129 Cambered Squat Bar \$411



PRO BAR WRAP PAD

- Protects shoulders and back during lifting exercises
- Black nylon cover with high quality foam insert
- 14" Long

WE310 \$17



MANTA RAY

- Prevents painful pressure points during back squats
- Durable polyurethane material
- Quickly snaps onto the bar
- Distributes weight over a larger area

WE3111 \$62



STING RAY

- Use the sting ray during front squats to relieve pressure on the shoulders
- Durable polyurethane material
- Quickly snaps onto the bar
- Distributes weight over a larger area

WE3112 \$62



STEEL SPRING COLLARS

Traditional, functional steel spring collar

WT131 \$15

SOLID RUBBER BUMPER PLATES

Bumper plates are the ideal tools for any lift from a standing position. Designed to impact the ground without creating damage to the floor, these new plates are thinner for those who wish to lift larger loads.

- 100% Rubber plates with solid steel insert
- Fit any olympic-style bar
- Colored plates feature colors to help guide weight selection
- Plates are sold in pairs
- Standard plate size 18" diameter



ROLLING BUMPER STAND

- Rugged casters allow for easy transport
- Stores up to ten 45 lb bumper plates
- Removable center post for easy load/unload
- Laser cut 1/2" steel base

WE528 36"H x 24"W x 24"D, 25 lb **\$185**



FLAT UTILITY BENCH

- Constructed of 11 gauge, 2" welded square steel tubing
- Firm Foam Padding with durable stitch-seamed vinyl
- Assembly Required

WE100 18"H x 16"W x 48"L, 32 lb **\$180**



WRIST STRAPS

Provides support for Olympic lifts, overheadwork, and bench presses.

WE31912	12" Wrist Straps	\$19/pr
WE31924	24" Wrist Straps	\$26/pr

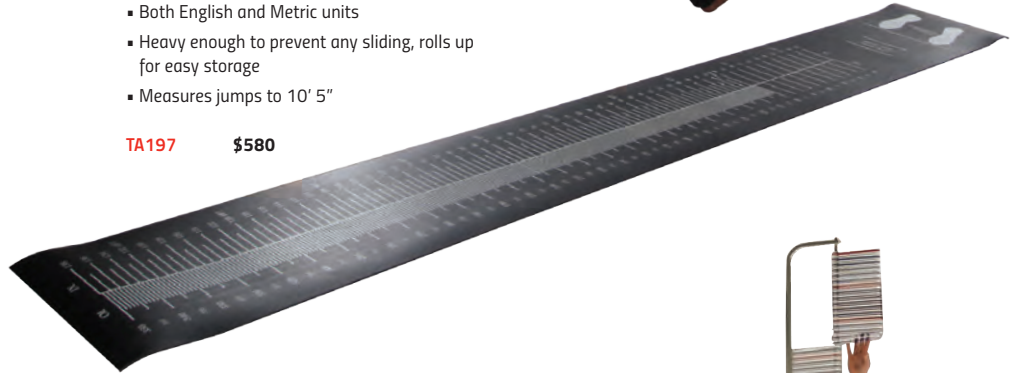
JUMP TRAINING & TESTING



STANDING LONG JUMP TEST MAT

- Non slip mat provides a soft landing surface that makes marking the distance of the jump easy
- Both English and Metric units
- Heavy enough to prevent any sliding, rolls up for easy storage
- Measures jumps to 10' 5"

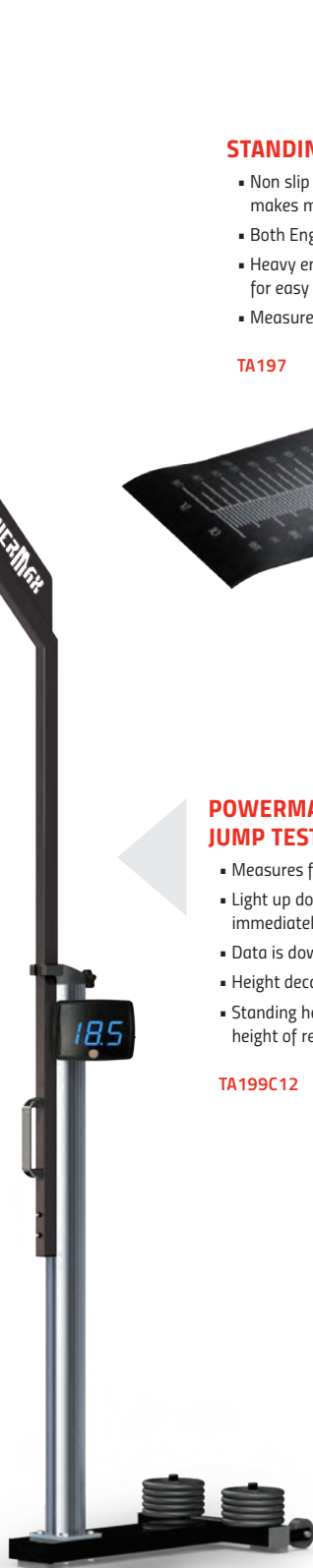
TA197 \$580



POWERMAX® ELECTRONIC VERTICAL JUMP TESTER

- Measures from 7' to 12' in ½" increments
- Light up dots on the height scale and digital display immediately show the exact jump height
- Data is downloadable to any computer
- Height decal offers quick "zero" marking
- Standing height measuring strip helps establish base height of reach prior to jump

TA199C12 \$2810



VERTEC MEASURING DEVICE

- An effective, easy-to-use jump training tool
- Measures from 6-12'
- Height scale and color coded vanes offer half-inch measurement for immediate feedback
- Handy, attachable rod to align or reset vanes

TA195 \$730



STRIDE CHECKER

- Improve stride length and frequency
- 30M long with segmented markings
- Usable on most surfaces
- Includes storage bag

TA1695 \$49



COACH BEEPER

- Digital electronic cadence beeper
- Helps a coach to work more exclusively with additional athletes
- Allows athlete to train more effectively
- Helps implement several critical training techniques to enhance speed and strength

TA145 \$1085



PRO WRIST ROLLER

- Most effective way to strengthen hands, forearms, and wrists
- Heavy 12" long ø1.25" Pipes
- Clip on attachment for standard plates

WE312 \$51



POWERWHEEL

Challenging unique exercises for your abs, obliques, back, hips and glutes

TA364 \$77



**POWERMAX®
ADJUSTABLE ANKLE WEIGHTS**

- Made of stretchable neoprene
- Adjustable weight up to 5lb total
- 21" x 5.25" x 1/2"

TA1861 \$43/pr

FLEXIBILITY & REHAB



POWERMAX® STRENGTH BANDS

- Resistance determined by thickness & width
- 41" long, seamless latex rubber
- Layered construction helps prevent breakage
- Sold individually

TA17110	XX-Light 35 lb Resistance, .5", Red	\$12
TA17160	X-Light 50 lb Resistance, .75", Orange	\$19
TA17170	Light 65 lb Resistance, 1", Violet	\$22
TA17120	Medium 80 lb Resistance, 1.5", Blue	\$34
TA17130	Heavy 150 lb Resistance, 2", Green	\$47
TA17140	X-Heavy 175 lb Resistance, 3", Black	\$65
TA17150	Super 200 lb Resistance, 4", Yellow	\$80



POWERMAX® MINI BANDS

- Great tool for warm-ups, hip muscles, and small intrinsic muscles
- 2" wide x 13" long

TA1741L	10 Light Bands (Red)	\$32
TA1741M	10 Medium Bands (Gray)	\$41
TA1741H	10 Heavy Bands (Black)	\$46



5" MASSAGE BALL

- Helps eliminate muscle knots, tension, and tightness
- Multi-directional roll to pinpoint specific muscles
- Two layer design with firm interior and soft exterior

TA1841 \$37

POWERMAX® FITNESS BANDS

- Effective for rehab, fitness, flexibility, and training
- Boxed rolls can be cut to length
- 6" wide cut bands

TA1726	5 yd Roll, Light	\$16
TA1727	5 yd Roll, Medium	\$22
TA1728	5 yd Roll, Heavy	\$26



POWERMAX® STABILITY BALLS

- Excellent for balance, abdominal work, and stretching
- Fabricated from durable vinyl, supports 500 lb
- Ships Deflated

TA1805	55 cm Ball (5' - 5' 8")	\$30
TA1806	65 cm Ball (5' 8"-6' 2")	\$33
TA1807	75 cm Ball (6' 2"+)	\$37



ANKLE-FLEX STRAPS

- Holds sprinter's foot flexed
- Improved ground strike efficiency

TA1485 \$26/pr



STRETCH OUT STRAP

- PNF stretching without a partner
- Eight 8" Handles allow a variety of stretches
- 62" Length x 4" Width x .5" Thickness

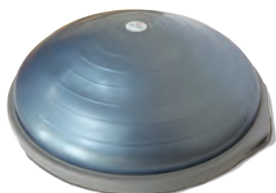
TA1781 \$6.25



STRETCHRITE™

- Increase tension by changing grip position
- Change or isolate the stretch by rotating foot inward or outward

TA1780 \$30



BOSU® BALANCE TRAINER

- Fitness / health professional version
- Includes program manual, training video, & free pump

TA1790 \$195



**36" POWERMAX®
FOAM ROLLER**

- For advanced balance exercises or pressure massage
- Constructed of high density foam
- 6" Diameter x 36" Length

TA3620 \$35



**18" POWERMAX®
2-IN-1 FOAM ROLLER**

- 6" Diameter x 18" Length high density EVA foam
- Removeable trigger point sleeve

TA1826 \$48



THE STICK

- Excellent tool for injury prevention and rehabilitation
- Used by professional athletic teams

TA1830 24" Stick \$57

TA1831 18" Stick \$45



ROLL-UP EXERCISE MAT

- Soft, durable foam with textured surface
- Roll-up for portability and storage
- 24" Width x 70" Length x .125" Height

TA304 \$24



TRIGGER POINT GRID ROLLER

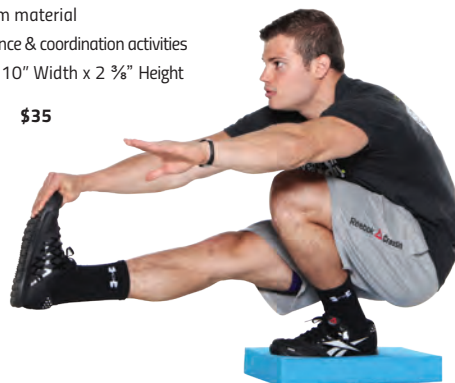
- Grid foam roller with Distrodensity™ zones
- 5" Diameter x 13" Length

TA1835 \$48

POWERMAX® BALANCE PAD

- Soft eva foam material
- Great for balance & coordination activities
- 17" Length x 10" Width x 2 3/4" Height

TA1803 \$35





**GREATNESS
STARTS**

AT HOME.

DAMAR FORBES

OLYMPIAN & 5-TIME JAMAICA NATIONAL CHAMPION

 [@airborneforbes](#)  [@airbornforbes](#)



JAMAICA

FORBES

LONDON 2012

FACILITIES

TAKE-OFF BOARDS & CURBING

PREPARE FOR TAKE-OFF WITH GILL BOARDS



ADJUSTABLE TAKE-OFF BOARD SYSTEMS

With the Gill Adjustable Take-Off Board Systems you get ease of installation, ease of use and dependable peak performance.

Gill Take-Off Board systems are the easiest and fastest boards to install in the market. **Complete system** comes with installation tray, adjustable folded aluminum base, reversible long lasting take-off board and foul board, and functional blanking lid ready to accept track surfacing.

- 8" take-off board and 4" foul board creates 12" system
- Exclusive easy-adjust leveling system for both horizontal and vertical axis
- Composite for longer lifespan
- Composite boards made of Polyboard®, an environmentally friendly, waterproof material that will not split or crack while offering jumpers great grip
- Meets NFHS, NCAA and IAAF specifications

43505	Complete NCAA System	\$987
43515	Complete IAAF System 	\$1025
P435007	Replacement 4" NCAA Foul Board	\$61
P435107	Replacement 4" IAAF Foul Board 	\$96
P435005	Replacement 8" Take-Off Board	\$155
P435205	Replacement 12" Take-Off Board	\$149
43525	12" Take-Off Board and Tray	\$503
439	1 lb Plasticine Brick - Yellow	\$7.50

STANDARD 8" TAKE-OFF BOARD SYSTEMS

- Complete system: Installation tray, aluminum leveling board and reversible take-off board
- Composite for longer lifespan
- Composite boards made of Polyboard®, an environmentally friendly, waterproof material that will not split or crack while offering jumpers great grip
- Blanking lid sold separately
- Meets NFHS and NCAA specifications

4445	Complete Standard 8" Take-Off Board System	\$459
44421	Blanking Lid Assembly	\$292
44405	Replacement Take-Off Board	\$223





851A

INTERNATIONAL TRACK CURBING

- Heavy gauge aluminum design features upscale fluted dome-shaped top
- Curbing sections are notched at one end to allow easy drop in or removal of section
- Curbing supported by 1/2" tall ribbed feet for unencumbered drainage
- Optional pin kit available to keep curbing from shifting on track
- Permanent installation includes two anchor pins for every 20' section
- Meets NFHS, NCAA and IAAF specifications, IAAF certified

Effective Dec. 1, 2018, all newly constructed or resurfaced indoor tracks to be surveyed for a curb must have regulation curbing in place for competition. (NCAA)

NON-PERMANENT INSTALLATION CURBING

851A	Plain		\$11/ln ft
852A	Anodized		\$16/ln ft
852P	Powder Coated		\$14/ln ft
851P	Base Pins (12)		\$185/set

PERMANENT INSTALLATION CURBING

853A	Plain		\$12/ln ft
854A	Anodized		\$16/ln ft
854P	Powder Coated		\$16/ln ft

CUSTOMIZABLE

Powder Coat



*Gray and Black powder coat available in Gloss or Flat



441TS

19.5" TAKE-OFF BOARD SYSTEM

- Complete System: Installation tray, aluminum base board, and reversible take-off board
- Composite for longer lifespan
- Composite boards made of Polyboard®, an environmentally friendly, waterproof material that will not split or crack while offering jumpers great grip
- Meets NFHS specifications

441TS	Complete HS System	\$516
4410S	Replacement 19 1/2" Take-Off Board	\$129



CONVERSION BOARD

- Convert a Gill 19 1/2" take-off board system to an 8" system
- Includes 8" composite take-off board, black vultrak, and baseboard

441C \$334

SAND PIT FORMS & COVERS

Sand pit forms hold more than just sand, they hold value. With four different options of Sand Catcher locations and two practical Sand Catcher Cover options, you can design the horizontal jump facility that will perfectly meet your needs.

Choose from one of four sand catcher locations: no sides, two sides, two sides and back, or all four sides. Choosing Sand Catchers on the sides will cut unnecessary costs and eliminate potential trip hazards, providing more than ample storage space for overflow sand.

Choose from one of two Sand Catcher Cover systems: traditional grate and mat or Gill (exclusive) Recessed Lid. When you consider the main function of a Sand Catcher system is not to catch sand but to store it, the Recessed Lid system is rapidly becoming the choice of facilities worldwide, as it is designed to receive track surfacing to match your track facility. When coupled with the 730148 Aluminum Sand Pit Cover, a complete logical design emerges for your world class jumps facility.

No matter which combination you choose; with the Gill Functional-Form, you can rest assured that you have chosen the finest product (with the easiest installation) available.

FORM WITH RECESSED CATCHERS

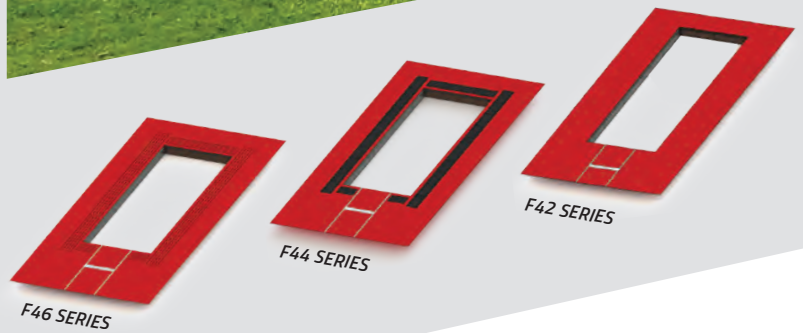
SIDES	FORM WITH RECESSED CATCHERS		
	Model	Length	Price
4 SIDES	F46225	25'	\$20230
	F46228	28'	\$21935
	F46231	31'	\$22730
3 SIDES	F46124	24'	\$16820
	F46127	27'	\$17620
	F46130	30'	\$19665
2 SIDES	F46023	23'	\$14100
	F46026	26'	\$16145
	F46029	29'	\$17390

FORM WITH GRATE & MAT CATCHERS

SIDES	FORM WITH GRATE & MAT CATCHERS		
	Model	Length	Price
4 SIDES	F44225	25'	\$19320
	F44228	28'	\$21595
	F44231	31'	\$22285
3 SIDES	F44124	24'	\$16055
	F44127	27'	\$16820
	F44130	30'	\$18645
2 SIDES	F44023	23'	\$12730
	F44026	26'	\$14210
	F44029	29'	\$14775

FORM WITHOUT CATCHERS

LEDDGE	FORM WITHOUT CATCHERS		
	Model	Length	Price
	F42023	23'	\$5575
	F42026	26'	\$6145
	F42029	29'	\$6370



ALL FORMS ARE 9' 8" WIDE

FAST INSTALLATION

READY-FIT ALUMINUM SAND PIT COVERS

F44023C	23' Cover	\$8660	F44026C	26' Cover	\$9790	F44029C	29' Cover	\$10920
F44124C	24' Cover	\$9050	F44127C	27' Cover	\$10180	F44130C	30' Cover	\$11310
F44225C	25' Cover	\$9440	F44228C	28' Cover	\$10570	F44231C	31' Cover	\$11700



COLORS



BALLASTED LJ/TJ SAND PIT COVERS

- Exclusive Vipol Matrix mesh material or solid vinyl polyester
- Anchoring system: Vinyl wrapped galvanized steel chain perimeter
- Ballasted pit covers are custom sized and sold by the square foot (no returns)
- Dimension certification form must be submitted with order

493680	Mesh Vinyl	\$5.25/sq ft
493682	Solid Vinyl	\$4.50/sq ft



ADDITIONAL COVER COLORS AVAILABLE!
Additional charge applies. See page 3 for color options. (Gray is standard.)

LJ/TJ SAND PIT COVERS

- Keep your sand pit clean and dry with solid vinyl sand pit covers or choose mesh if rain is not an issue
- Constructed of vinyl coated woven polyester
- Anchoring system: Bags filled with sand placed in pouches to weigh cover down
- Optional 5' x 5' multi-color graphic available
- Graphic worksheet and vector artwork must be provided

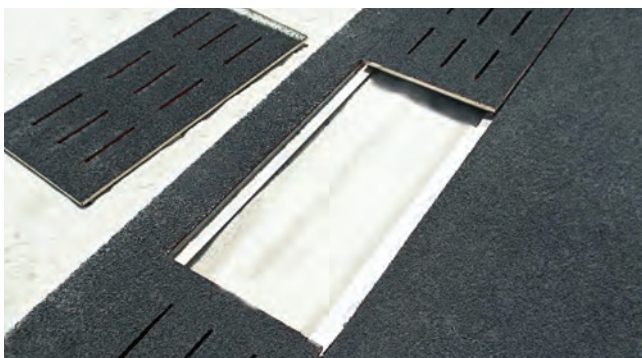
730147	Mesh 11' 9" x 25' 6"	\$1105
730147L	Mesh 11' 9" x 31' 6"	\$1345
730147V	Vinyl 11' 9" x 25' 6"	\$1160
730147VL	Vinyl 11' 9" x 31' 6"	\$1505
9453	Graphic Option	\$757



TRADITIONAL GRATE & MAT SAND CATCHER COVER SYSTEM

- Combination of 1" x 1/8" galvanized steel bar grating and perforated rubber overlay
- Creates strong combination for stamping off sand yet light enough for easy handling
- Standard unit measures 18" x 36" x 1 5/8" and requires a ledge around perimeter to rest on
- For perfect fit, installer may make one or more field cuts
- Sold per 18" x 36" sections only

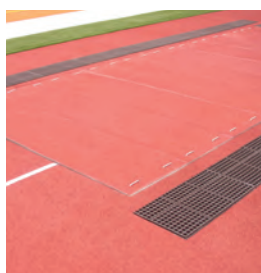
730149 \$185/section



RECESSED SAND CATCHER COVER SYSTEM

- Recessed cover design for 1/2" (12mm) track surface
- Constructed of 1/8" aluminum sheet metal
- Standard unit measures 18" x 36" and requires a ledge around perimeter to rest on
- Special lengths available between 18" and 35" long

73015036 \$171/section



LJ/TJ ALUMINUM SAND PIT COVER

- Each panel made from 9.5" x 1.75" x .125" aluminum planking framed with 2 3/8" x 1 1/2" x 3/16" aluminum angle
- Panels have four flush mount handles
- Recessed design for 1/2" (12mm) track surface

730148 \$39/sq ft

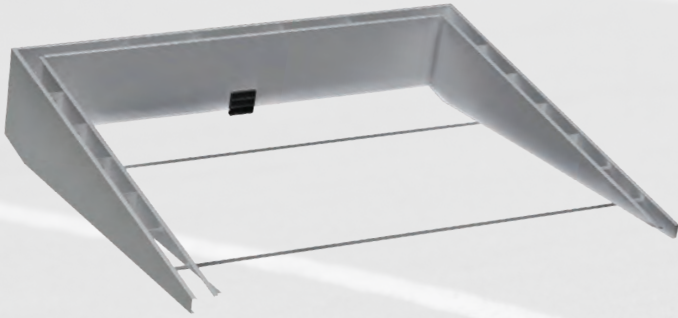


PERIMETER PADDING SYSTEM

- Greatly reduce possibility of injury caused by impact with sand pit edging
- Modular pads install on any sand pit quickly and conveniently
- Critical location of pads is along sides of sand pit
- Each pad is 36" long

730 \$93

STEEPLECHASE



SAVE MONEY WITH VALUEPACKS!

VALUEPACK - SURFACE MOUNT

Package includes:

- F500 Steeplechase Water Jump Form
- 740144 Steeplechase Water Jump Barrier-surface mount version

VPF500 \$8600

FUNCTIONAL-FORM STEEPLECHASE WATER JUMP SYSTEMS

Gill Athletics has greatly simplified the installation of steeplechase water jump reservoirs with these Functional-Form systems. With the Functional-Form, installation precision is ensured to meet NFHS, NCAA and IAAF specifications. Structure is fabricated of specially folded 1/8" aluminum to maximize strength and includes designed inner wall supports that allow the concrete to flow through and set evenly.

- F500: Compatible with 740144 water jump barrier
- F510: Compatible with 740134 water jump barrier
- Both models compatible with 730146 aluminum water jump cover
- Both models come standard with valve option: installed front wall valve to be connected with an outgoing pipe to the drain source
- *Meets NFHS, NCAA and IAAF specifications*

F500 Surface Mount Form \$6025

F510 Ground Sleeve Form \$6025

VALUEPACK - GROUND SLEEVE

Package includes:

- F510 Steeplechase Water Jump Form with integrated ground sleeves
- 740134 Steeplechase Water Jump Barrier-ground sleeve version

VPF510 \$8215



730146

WATER JUMP COVERS

- Each panel made from 9.5" x 1.75" x .125" aluminum planking framed with heavy duty aluminum angle
- Panels have four flush mount handles
- Recessed design for 1/2" (12mm) track surface
- Understructure supported with 4" x 2" aluminum beams

730146 \$8990



740134 Shown with 740145212



STEEPLECHASE WATER JUMP BARRIERS

- Barrier beam is 4" x 4" square steel tubing with synthetic track material
- Pull pin design makes barrier height change a snap
- Welded gusset adds needed strength support to the beam
- Adjustable to three heights: 30", 33", 36"
- Aluminum water jump barrier seal available
- *Meets NFHS, NCAA and IAAF specifications*
- *Surface mount barrier is IAAF certified*
- *5 Year Limited Warranty*

740134 Water Jump Barrier w/ Ground Sleeves \$2440

740144 Water Jump Barrier w/ Surface Mount  \$2840

730145B Aluminum Water Jump Barrier Seal \$678

MESH WATER JUMP BARRIER SEALS

- Add color and design to your steeplechase water jump
- Lightweight design will ease water barrier height change

740145202 Royal Blue \$334

740145203 Red \$334

740145204 White \$334

740145209 Gray \$334

740145212 Black \$334

740145204SP White Mesh with Graphics \$557

COLORS





OFFICIAL EQUIPMENT SUPPLIER TO THE
2020 TRACK & FIELD CHAMPIONSHIPS



STEEPLECHASE BARRIER WITH DROP DOWN WHEELS

- 5" x 5" Barrier beam is constructed with aluminum extrusion and synthetic track material
- Wheels easily set and retract with foot engaged levers
- Pin pull design allows for simple barrier height adjustment
- Welded gusset adds needed strength support to the beam
- Adjustable to three heights: 30", 33", 36"
- Meets NFHS, NCAA and IAAF specifications, IAAF certified
- 5 Year Limited Warranty

740150	1 x 5m Barriers, 3 x 4m (4)		\$13110/set
740150131	4m Barrier; 13' Width		\$3305/ea
740150161	5m Barrier; 16' 5" Width		\$3600/ea



STEEPLECHASE BARRIER

- 5" x 5" Barrier beam is constructed with aluminum extrusion and synthetic track material
- Pin pull design allows for simple barrier height adjustment
- Welded gusset adds needed strength support to the beam
- Adjustable to three heights: 30", 33", 36"
- Optional wheel kit for manual addition of wheels for transportation
- Meets NFHS, NCAA and IAAF specifications, IAAF certified
- 5 Year Limited Warranty



On all Steeplechase Barriers
Call for Details.



740140	1 x 5m Barriers, 3 x 4m (4)		\$9340/set
740140131	4m Barrier; 13' Width		\$2330/ea
740140161	5m Barrier; 16' 5" Width		\$2635/ea
74014050	Wheels (4)		\$233/set



740140

6' TRAINING BARRIER

740140061	6' Training Steeplechase Barrier		\$1865
740150061	6' Training Barrier w/Drop Down Wheels		\$3095

VAULT BOXES

ALUMINUM VAULT BOX

- Welded aluminum construction
- Reinforced backstop for prolonged life
- Meets NFHS, NCAA and IAAF specifications, IAAF certified

502  \$535

ALUMINUM VAULT BOX LID

- Compatible with all Gill vault boxes
- Reinforced with two 1/2" angled vertical supports to prevent sagging
- 50201: Recessed design to accommodate 1/2" (12mm) track surface
- 50202: Flush design with no added track surface

50201 *Lid-Recessed Mount* \$470

50202 *Lid-Flush Mount* \$503



STEEL VAULT BOX

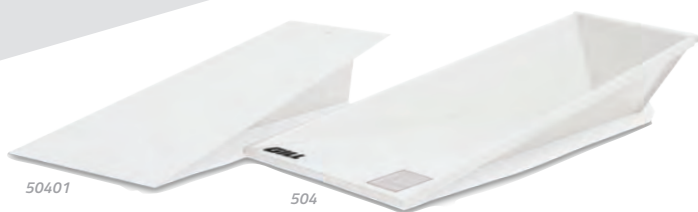
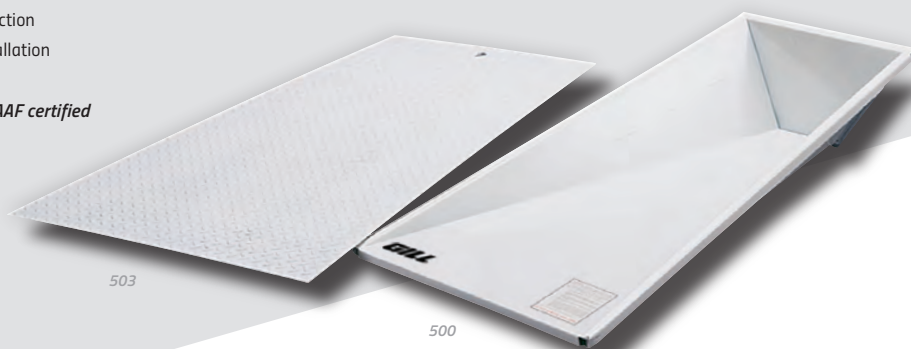
- Twelve gauge steel with fold and weld construction
- Flanged edges and flared sides for secure installation
- Finished with durable white powder coat
- Meets NFHS, NCAA and IAAF specifications, IAAF certified

500  \$394

UNIVERSAL VAULT BOX LID

- Compatible with all Gill vault boxes
- Constructed of 11 gauge hot rolled steel
- Features anti-slip designed surface
- Finished with durable white powder coat

503 \$338



STAINLESS STEEL VAULT BOX AND LID

- Box: Stainless steel alloy fold and weld construction for corrosion resistance
- Lid: 12 gauge 304 stainless steel plate with 2 angled vertical supports to prevent sag
- Lid: Recessed design to accommodate 1/2" (12mm) track surface
- Lid intended for use with stainless steel vault box
- Meets NFHS and NCAA specifications

504 *Vault Box* \$798

50401 *Vault Box Lid* \$577

CAST ALUMINUM VAULT BOX

- 100% cast aluminum construction with a wall thickness of 3/8"
- Standard durable white powder coat finish; Orange powder coat option available
- Inside corners rounded for unhindered pole rotation
- Guaranteed against cracking or warping
- Meets NFHS, NCAA and IAAF specifications, IAAF certified

505 *White*  \$874

505C05 *Orange*  \$950



SHOT RETURN & STOPS



NEW!

SHOT PUT RETURN

- Spring loaded Shock-Stop™ absorbs the impact of the returning shot and protects the implement
- Powder coated steel legs adjust in height to control the shot return speed
- Pin pull design allows for simple barrier height adjustment
- Bases include stabilizing rubber feet (indoor surfaces) and spikes (outdoor surfaces)
- Base Set 872 includes 2 bases and 10' of rail
- Each Add-On Kit adds 10' of rail to customize the length to meet the facility needs

**Shown with 872 Base Set, 871 Add-on Kits (3), and Custom Banner*

872	Shot Put Return Base Set	\$745
871	Shot Put Return 10' Add-on Kit	\$400/ea
87103CXXSP	Optional Custom Banner	\$510

CUSTOMIZABLE



SOFT SHOT STOP

- Prevents implements from rolling past the throw sector
- Shock absorbing foam filled barriers wrapped in a 19oz customizable vinyl
- Non-slip material on bottom creates traction to keep barriers in place
- Hook and loop straps secures each barrier to each other and keeps barriers functioning as one unit
- Each barrier is 6' L x 23" W x 23" H

869CXX	Soft Shot Stop	\$642
869CXXSP	Soft Shot Stop W/ Graphics	\$723



HEAVY DUTY IMPLEMENT BARRIER

- Prevents implements from rolling past the throw sector
- Constructed with durable polyethylene
- Each barrier locks together with steel pin to eliminate gaps
- Each section is 6' L x 18" W x 32" H
- 80 lbs empty / 1,110 lbs if filled with water

868 **\$661**

SECTOR LENGTH	# OF UNITS
16m / 52'	6
18m / 59'	7
20m / 66'	8
22m / 72'	8
24m / 79'	9

**Applies to both 868 and 869 Models*

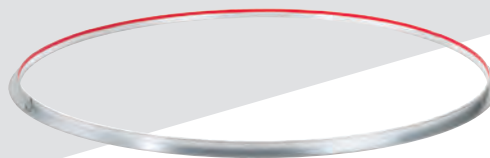
CIRCLES & TOEBOARDS



ALUMINUM CIRCLES

- Four sections of 1" x 3/4" extruded aluminum angle
- Designed to be cast into concrete
- Discus circle can also be mounted to surface
- Compatible with toeboards 358, 363
- *Meets NFHS, NCAA and IAAF specifications*

369	Shot/Hammer Circle	\$233
370	Discus Circle	\$245



ALUMINUM CIRCLES WITH 2" ANGLE PROFILE

- Two sections of 2" x 2" extruded aluminum angle
- Designed to be cast into concrete
- Compatible with toeboards 358, 363
- *Meets NFHS, NCAA and IAAF specifications*

374	Shot/Hammer Circle	\$514
375	Discus Circle	\$535



PROFILE FOR
369, 370 & 372



PROFILE FOR
371 & 373



PROFILE FOR
374 & 375



364 with 373



ALUMINUM SHOT CIRCLE

- Three sections of 1" x 3/4" extruded aluminum angle
- Designed to be mounted on top of concrete surface
- Anchor bolts included
- Compatible with toeboards 359, 364
- *Meets NFHS specifications*

372	\$223
-----	-------



POWDER COATED STEEL DISCUS CIRCLE

- Three sections of 1/4" x 1 1/2" flat powder coated steel
- Designed to be mounted on top of concrete surface
- Anchor bolts included
- *Meets NFHS specifications*

371	\$290
-----	-------



POWDER COATED STEEL SHOT CIRCLE

- Four sections of 1/4" x 1 1/2" flat powder coated steel
- Designed to be mounted on top of concrete surface
- Anchor bolts included
- Compatible with toeboards 359, 364
- *Meets NFHS specifications*

373	\$257
-----	-------



REDESIGNED!

HAMMER CONVERSION CIRCLE

- Converts a discus ring into a hammer ring
- 7 interlocking sections of white PVC plastic
- *Meets NFHS, NCAA and IAAF specifications, IAAF certified*

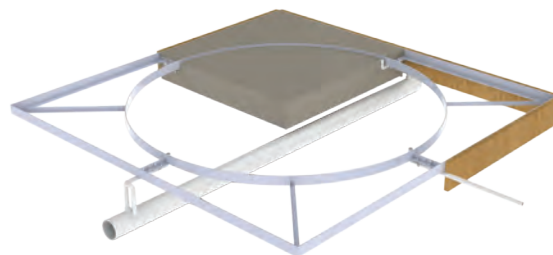
3622	4 Piece System	\$1040
3621	6 Piece System	\$891



ALUMINUM CIRCLES WITH CROSS BRACING

- Two sections of 1/4" x 3" extruded aluminum with welded bracing
- Bolt together to maintain form during in-ground installation
- Hardware included
- Compatible with toeboards 358, 363
- *Meets NFHS, NCAA and IAAF specifications, IAAF certified*

366	Shot/Hammer Circle		\$701
366C04	Shot/Hammer Circle; white		\$758
367	Discus Circle		\$699
367C04	Discus Circle; white		\$753



ALUMINUM CIRCLE FORMS

- Four sections of 2" x 3" aluminum angle
- Bolt together form for in-ground installation
- Aluminum exterior bracing creates a strong frame
- Center open for smooth concrete pour and crack-resistant finish
- Inner circle is 1/4" x 3" flat aluminum bar
- Compatible with toeboards 358, 363
- *Meets NFHS, NCAA and IAAF specifications*

3741	Shot/Hammer Circle Form	\$2610
3751	Discus Circle Form	\$2980



SYNTHETIC SHOT TOEBOARD FOR DEPRESSED PAD

- Molded low density polyethylene designed for 3/8" depressed surface
- Compatible with circles 366, 369, 374, 3741
- *Meets NFHS, NCAA and IAAF specifications*

358 \$350

SYNTHETIC SHOT TOEBOARD FOR LEVEL PAD

- Molded low density polyethylene designed for surface mount shot circles
- Compatible with circles 372, 373
- *Meets NFHS specifications*

359 \$350



ALUMINUM SHOT TOEBOARD FOR DEPRESSED PAD

- Cast aluminum designed for a 3/8" depressed surface
- Compatible with circles 366, 369, 374, 3741
- *Meets NFHS, NCAA and IAAF specifications, IAAF certified*

363 \$546

ALUMINUM SHOT TOEBOARD FOR LEVEL PAD

- Cast aluminum designed for surface mount shot circles
- Compatible with circles 372, 373
- *Meets NFHS specifications*

364 \$546



SYNTHETIC PLUGS

- Keeps debris and standing water out of throwing circles
- Constructed of 3/8" thick rubber and made to fit snug inside depressed circles
- Plugs come in sections for easier handling

37001	Shot Circle Plug	\$329
37002	Discus Circle Plug	\$519



Toeboard sold separately

INDOOR SHOT/WEIGHT THROW CIRCLE

- Constructed of 3/4" plywood with steel hinges and handles
- Foldaway handles for easy handling and storage
- Laminated weather proofed marine plywood toeboard (sold separately)
- Optional three piece 3/4" 7-ply birch plywood throwing surface (sold separately, not shown)
- *Meets NFHS, NCAA and IAAF specifications*

368	Indoor Shot/Weight Throw Circle	\$1085
3680	Wood Shot Toeboard for Indoor Circle	\$512
3681	Shot Throwing Surface	\$412



**NEVER
GIVEN,**

**ALWAYS
EARNED.**

REGGIE JAGERS

U.S. CHAMPION & WORLD UNIVERSITY CHAMPION

 @KingJagers

 @KingJagers



USA

USA
ATHLETICS WORLD CUP
LONDON 2018

CAGES

HAMMER CAGES



SAFETY.
CONVENIENCE.
LONGEVITY.

Gill hammer cages have three exclusive features that increase safety and decrease liability. Combined with an industry best five-year warranty, Gill Athletics keeps your facility at the top of its class. Your facility deserves the best.

WIRED FRONT DOOR DESIGN

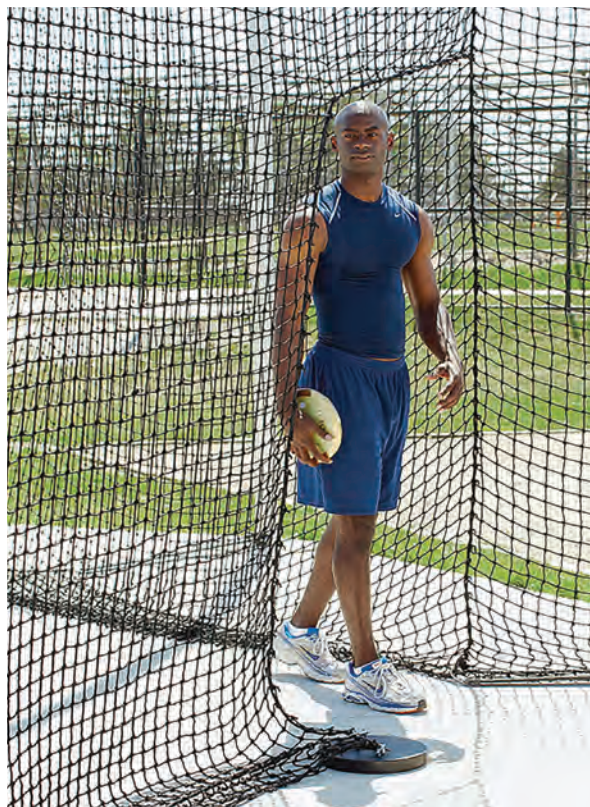
With a wired front door design your cage will look new for years to come. No more bent front pole from errant throws, and decrease the likelihood of bounce backs from implements.

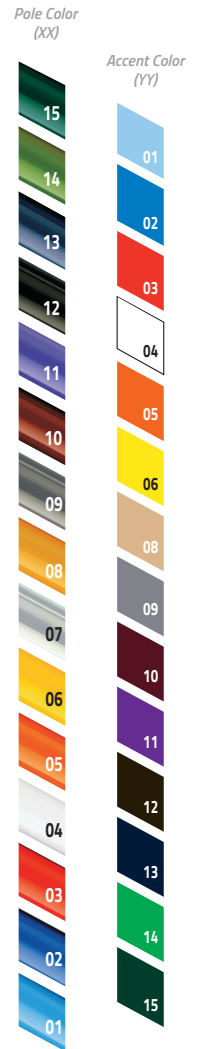
DOOR HINGE LOCK BOLT

Suggested from the top track designer in America, this unique feature keeps your front doors from tweaking and misaligning from the door hatch location.

REAR DOOR ACCESS

Keep your athletes away from the danger zone of the front cage while increasing the speed of repetitions.

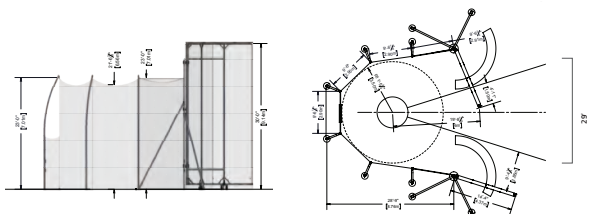




MAXIMUS™ HAMMER CAGE

• 5 Year Warranty

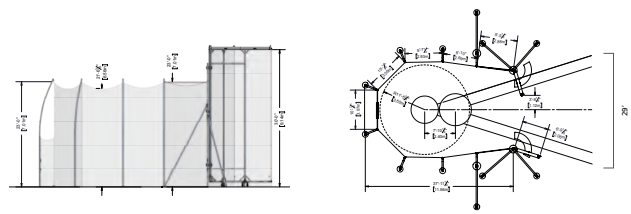
742130	Cage	\$36830
742130CXXYY	Cage with Custom Color	\$40515
74213001	Ground Sleeve Kit	\$2000
732103	Optional Barrier Net (8')	\$891



MAXIMUS™ DOUBLE RING HAMMER CAGE

• 5 Year Warranty

742135	Cage	\$38995
742135CXXYY	Cage with Custom Color	\$42895
74213501	Ground Sleeve Kit	\$2500
732108	Optional Barrier Net (8')	\$980



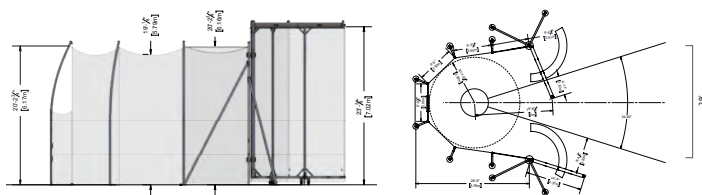
HAMMER CAGES



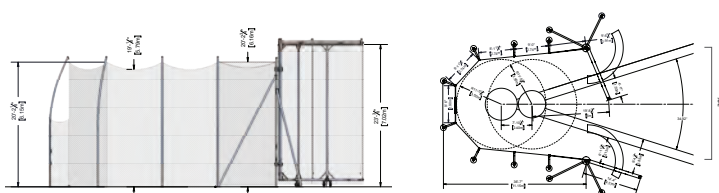
REDESIGNED!

NCAA HAMMER/DISCUS CAGES

- Available in single ring or double ring design
- Poles: 6063-T6 aluminum net poles
- Doors: Cages have 7m tall aluminum doors with galvanized steel door hinge poles. Tall Cages have 8m tall doors.
- Net: Weather treated nylon 6 net with 749 lb break strength
- Cage - Main net: 20' 6"/6.25m, Door net: 23'/7m
- Tall Cage - Main net: 23'/7m, Door net: 26' 3"/8m
- Tall cage includes required cage door bracing
- Ground sleeve kit sold separately
- **Meets NCAA specifications**
- **5 Year Warranty**



SINGLE RING CAGES



DOUBLE RING CAGES

SINGLE RING CAGE

742110	Cage	\$28970
742110CXXYY	Cage with Custom Color	\$31870
74211001	Ground Sleeve Kit	\$1930
732103	Optional Barrier Net (8')	\$891

TALL SINGLE RING CAGE

742120	Tall Cage	\$32310
742120CXXYY	Tall Cage with Custom Color	\$35545
74212001	Ground Sleeve Kit	\$1975
732103	Optional Barrier Net (8')	\$891

DOUBLE RING CAGE

742115	Cage	\$31310
742115CXXYY	Cage with Custom Color	\$34445
74211501	Ground Sleeve Kit	\$2375
732108	Optional Barrier Net (8')	\$980

TALL DOUBLE RING CAGE

742125	Tall Cage	\$34430
742125CXXYY	Tall Cage with Custom Color	\$37875
74212501	Ground Sleeve Kit	\$2475
732108	Optional Barrier Net (8')	\$980

Pole Color (XX) Accent Color (YY) See color chart on pg 105



732310CX



On all Gill Cages
Call for Details.

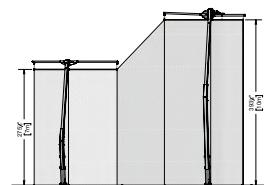
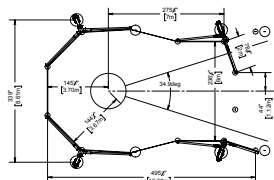
COLORS



*To specify color with order, use the two-digit number of your color selection to replace XX in the item number.

THOR 10 HAMMER/DISCUS CAGE

- Poles: (4) Combination of steel and aluminum to withstand up to 74mph winds
- Doors: (2) 10m x 2m swing arm doors
- Net: 1 3/4" square mesh woven poly cord with 771 lb break strength
- Main net height: 23'7m, Door net height: 32'10"/10m
- Net is secured by net rails across entire cage and 14 rope anchors
- 59" deep ground sleeves
- Meets NCAA and IAAF specifications
- 5 Year Warranty

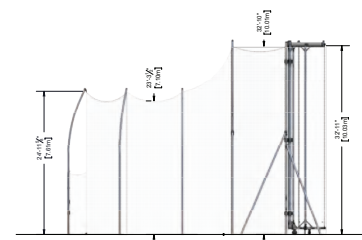
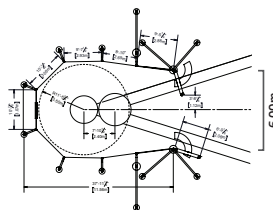


732310CX Thor 10 Hammer/Discus Cage \$41315

73231001 Ground Sleeve and Net Anchor Kit \$2255

IAAF TALL DISCUS/HAMMER CAGE

- Poles: (8) 6063-T6 aluminum net poles
- Doors: (2) Galvanized steel door hinge poles and 10m tall aluminum moveable doors
- Net: Weather treated nylon 6 net with 340.7kg break strength
- Ground sleeve kit sold separately
- Meets NCAA and IAAF specifications. IAAF certified
- 5 Year Warranty



742145 Cage IAAF \$37880

74214501 Ground Sleeve Kit \$2675

732218 Optional Barrier Net (8') \$1875

DISCUS CAGES



APOLLO DISCUS CAGE

- Poles: (3) Combination of steel and aluminum to withstand up to 62mph winds
- Net: 1 3/4" square mesh woven poly cord with 352 lb break strength
- Net height: 18'
- Net is secured by 14 hanging points and 8 rope anchors
- 36" deep ground sleeves
- *Meets NCAA and IAAF Specifications*
- *5 Year Warranty*

COLORS

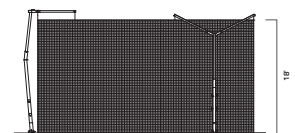
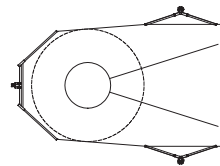


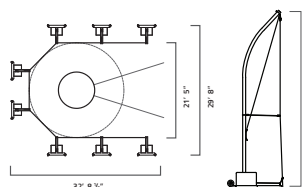
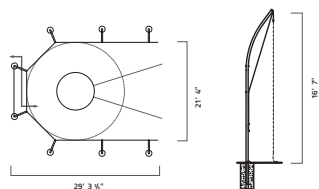
**To specify color with order, use the two-digit number of your color selection to replace XX in the item number.*

732301CXX	<i>Apollo Discus Cage</i>	\$16120
732301009	<i>Ground Sleeve and Net Anchor Kit</i>	\$827



*On all Gill Cages
Call for Details.*





NCAA ALUMINUM DISCUS CAGE

- Poles: (8) 6063-T6 aluminum net poles
- 16' 7" Net: Weather treated nylon 6 net with 340 lb break strength
- Rear door access net standard
- Rear net support tubes prevent net sag
- 18" hinged net arms secure net at all eight poles
- 36" deep ground sleeves
- *Meets NCAA specifications*
- *5 Year Warranty*

732130	Cage	\$5850
732130CXX	Cage with Custom Color	\$6890
732132	Optional Barrier Net (B')	\$1285

NCAA PORTABLE DISCUS CAGE

- Designed for set up and removal as needed
- Poles: (8) 2 1/2" outside diameter 6063-T6 aluminum net poles
- 16' 7" Net: Weather treated nylon 6 net with 340 lb break strength
- Bases: A500 Grade B steel with wheels for transportability and weighted with 5 gallon jugs to be filled with sand or water
- *Meets NCAA specifications*
- *5 Year Warranty*

732230	Cage	\$11920
732230CXXYY	Cage with Custom Color	\$13110

Pole Color (XX) Accent Color (YY) See color chart on pg 105

BRUTUS DISCUS CAGE

- For high wind areas that need extra strength discus cages
- Made of Hammer Cage strength 4" outside diameter aluminum poles
- *Meets NFHS specifications*
- *5 Year Warranty*

732150	Brutus Cage	\$9140
732150CXX	Brutus Cage, Custom Color	\$10035

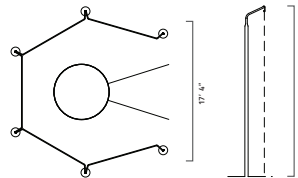
DISCUS CAGES



PRO-DOWN DISCUS CAGE

- Poles: (6) 2 3/8" outside diameter 12 gauge steel poles
- 10' 6" Net: Knotless weather treated nylon net with 180 lb break strength
- Five galvanized steel top rungs eliminate net sag
- **Meets NFHS specifications**
- **5 Year Warranty**

80401	<i>Cage with Ground Sleeves</i>	\$1825
80402	<i>Cage with Plates</i>	\$2895



DISCUS SECTOR NET

- Effective at stopping a discus from skipping outside of the sector
- 2' tall by 60' long 320 lb break strength discus net
- Held by 3/4" diameter steel net poles and ground stakes
- Polyethylene net spools included for convenient storage and handling

731135 \$578



OUTDOOR THROWING NET

- Get the maximum number of reps with the minimal amount of retrieval
- Provides the perfect set up for working on throwing technique for shot put, discus and javelin (weighted balls)
- Bottom of main net has a pocket to catch implements before they hit the ground, preventing damage and making retrieval easier
- Side nets offer additional errant throw protection
- Poles: 4" diameter, 1/8" wall, T6 aluminum tube in 40" deep ground sleeves
- Nets are 749 lb test weather treated knotted nylon
- Main net is 20' x 20'

731300 \$2905



COLOR OPTIONS AVAILABLE!

Transform Your Cages with Custom Powder Coat

CUSTOMIZABLE

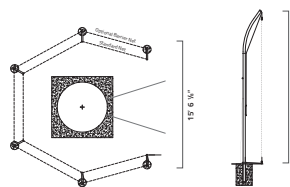


*To specify color with order, use the two-digit number of your color selection to replace XX in the item number.
*Gray and Black powder coat available in Gloss or Flat

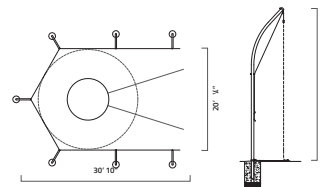
HIGH SCHOOL DISCUS CAGES

- Aluminum poles: 2 7/8" outside diameter 6063-T6 (Ultimate-30ksi, Yield-25ksi) with rolled offset for safety
- Steel poles: 2 1/2" square A513 (Ultimate-42ksi, Yield-30ksi) with rolled offset for safety
- Nets: 180 lb break strength
- Net height: 13' 6"
- **Meets NFHS specifications**
- **5 Year Warranty**

6 POLE DESIGN



7 POLE DESIGN



ALUMINUM CAGE

8010	6-Pole Cage	\$3330
8010CXX	6-Pole Cage, Custom Color	\$4130
80102	Barrier Net	\$434
8020	7-Pole Cage	\$3710
8020CXX	7-Pole Cage, Custom Color	\$4595
80202A	Barrier Net	\$579
8021	7-Pole Cage w/ Rear Door Access	\$4825
8021CXX	7-Pole Cage w/ Rear Door Access, Custom Color	\$5625
80212	Barrier Net w/ Rear Door Access	\$557

STEEL CAGE

8030	6-Pole Cage	\$3015
80302	Barrier Net	\$467

BRUTUS CAGE

- For high wind areas that need extra strength discus cages
- Made of Hammer Cage strength 4" outside diameter aluminum poles
- **Meets NFHS specifications**
- **5 Year Warranty**

9010	6 Pole High School Cage	\$4940
9010CXX	6 Pole High School Cage with Custom Color	\$5855
9020	7 Pole High School Cage	\$5745
9020CXX	7 Pole High School Cage with Custom Color	\$6545
9021	7 Pole High School Cage, Rear Door Access	\$6085
9021CXX	7 Pole High School Cage, Rear Door Access, Custom Color	\$6890

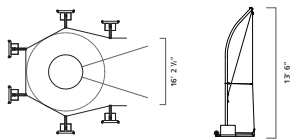
DISCUS, SHOT, & INDOOR CAGES



HIGH SCHOOL PORTABLE DISCUS CAGE

- Designed for set up and removal as needed
- Poles: (6) 6063-T6 aluminum net poles
- 13' 6" Net: #504 knotless nylon netting with 180 lb break strength
- Bases: A500 Grade B steel with wheels for transportability and weighted with 5 gallon jugs to be filled with sand or water
- Jug cover customization available for additional charge
- **5 Year Warranty**

732220	Cage	\$8385
732220CXXYY	Cage with Custom Color	\$9415

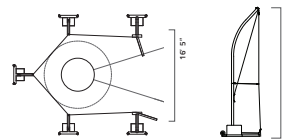


Pole Color (XX) Accent Color (YY)
See color chart on pg 105

NCAA PORTABLE INDOOR CAGE

- Designed for set up and removal as needed
- Poles: (5) 6063-T6 aluminum net poles
- 13' 2" Net: #42A knotless nylon netting with 561 lb break strength
- Doors: repositionable with wired front design for longer life
- Bases: A500 Grade B steel with wheels for transportability and weighted with 5 gallon jugs to be filled with sand or water
- Jug cover customization available for additional charge
- **Meets NCAA specifications**
- **5 Year Warranty**

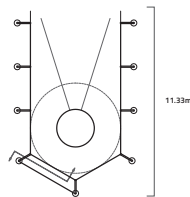
732250	Cage	\$12855
732250CXXYY	Cage with Custom Color	\$14230



Pole Color (XX) Accent Color (YY)
See color chart on pg 105

IAAF ALUMINUM DISCUS CAGE

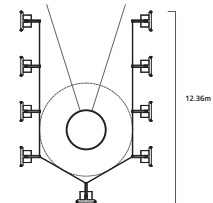
- Poles: (9) 6063-T6 aluminum net poles
- 5.1m Net: Weather treated nylon 6 net with 340 lb break strength
- Rear door access net standard
- Rear net support tubes prevent net sag
- 18" hinged net arms secure net at all poles
- **IAAF certified**
- **5 Year Warranty**



732140	Cage	\$6720
732140CXX	Cage with Custom Color	\$7800
732142	Optional Barrier Net (8')	\$847

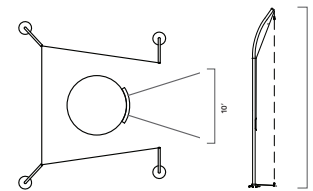
IAAF PORTABLE DISCUS CAGE

- Designed for set up and removal as needed
- Poles: (9) 6063-T6 aluminum net poles
- 5.1m Net: Weather treated #42A knotless net with 340 lb break strength
- Bases: A500 Grade B steel with wheels for transportability and weighted with 5 gallon jugs to be filled with sand or water
- **IAAF certified**
- **5 Year Warranty**

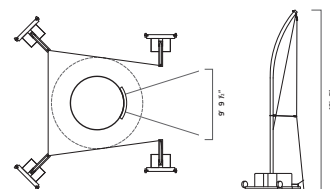


732240	Cage	\$14920
732240CXXYY	Cage with Custom Color	\$16070

Pole Color (XX) Accent Color (YY) See color chart on pg 105



SHOT CAGE



PORTABLE SHOT CAGE

SHOT CAGE

- Poles: (4) 6063-T6 aluminum or A513 steel
- 13' 6" Net: Weather treated nylon 6 net with 180 lb break strength
- 18" hinged net arms secure net at front two poles with ground stakes used at back poles
- **5 Year Warranty**

805	Steel Cage	\$2400
8050	Aluminum Cage	\$2905
8050CXX	Aluminum Cage with Custom Color	\$3275

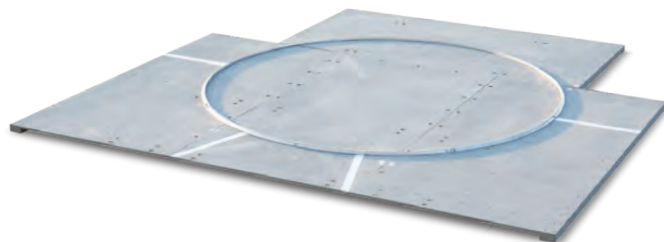
PORTABLE SHOT CAGE

- Designed for set up and removal as needed
- Poles: (4) 6063-T6 aluminum net poles
- 13' 6" Net: #42A knotless nylon netting with 180 lb break strength
- Bases: A500 Grade B steel with wheels for transportability and weighted with 5 gallon jugs to be filled with sand or water
- **5 Year Warranty**

732260	Cage	\$6545
732260CXXYY	Cage with Custom Color	\$7235



On all Gill Cages
Call for Details.



PORTABLE DISCUS PLATFORM

- Wood platform with aluminum circle
- Constructed of 1/2" marine grade plywood with pressure treated 2' x 5' and 2' x 6' lumber
- Platform breaks down into eight pieces for storage space of 8' x 4'
- Weighs in excess of 400 lb
- Gray marine coat finish

3710 **\$6825**



VERSACOM BOXES

CONNECTING IT ALL TOGETHER

The *VersaCom Box* provides a junction for electricity and cable hookups. This box can be put in virtually any location around performance areas of varying surfaces. The open bottom of the *VersaCom Box* provides adequate drainage and conduit entry, while the hand holes in the cover allow easy access.

- Divider plates in full size version, provided to help keep electrical equipment segregated
- Main box structure is made of 1/4" thick folded aluminum
- Lid is constructed of 1/4" aluminum plates for maximum support and durability

The *VersaCom Box - Synthetic Version* allows material to be bonded or poured onto the top of the lid to match the surrounding surface. The F91033 and F93033 versions have black Vultrak bonded to the lid. This addition is usually for asphalt applications (this material can also be painted).

The *VersaCom Box - Turf Version* features a supplied aluminum top to allow artificial turf to be glued on the jobsite, and is tethered to the box. This top is reinforced with multiple aluminum plates for maximum strength and durability. Factory installed turf infill retainment brushes keep infill out of the box.



SOLD SEPARATELY

VERSACOM RISER

The *VersaCom Riser* has the same dimensions as a full-size *VersaCom Box*. The riser attaches to the bottom creating a box that is twice as deep.

F90010 *Versacom Riser* **\$578**

VERSACOM BOXES		FULL SIZE 30" L x 18" W x 14" D		HALF SIZE 15" L x 18" W x 14" D	
SYNTHETIC VERSIONS	<i>Synthetic</i>	F910	\$1145	F930	\$746
	<i>Black Vultrak (Factory Installed)</i>	F91033	\$1285	F93033	\$880
TURF VERSION	<i>Turf</i>	F960	\$1180	F970	\$779



OFFICIAL EQUIPMENT SUPPLIER TO THE
2020 TRACK & FIELD CHAMPIONSHIPS

PORTABLE TRACK SHELTER

Steel frame is mounted on swivel casters. 360 degree seating surrounds a center storage shelf. Roof frame is constructed of aluminum bracing with architectural gray powder coat. Canopy is tensioned with a one-piece vinyl gray powder coat. Custom color and graphic application available on canopy top.

54240CXXSP Portable Track Shelter w/ Graphics \$5200



Vinyl

CUSTOMIZABLE



*Specify vinyl color with order, use the two-digit number of your color selection to replace XX in the item number.



PORTABLE PRESS TOWER

Multi-use tower can be used for coaching, filming, press and media. Non-skid decking. 5'-9" platform height. 4' x 10'-6" platform size with an overall size of 7' x 10'-6". Anodized aluminum bench with back moves forward and back. 16" pneumatic wheels— two locking and two swivel wheels. Optional soft enclosure for inclement weather.

- Weather Resistant Top Cover Available in Colors
- Heavy Duty Aluminum Construction
- 3 Year Warranty

542359XX	Press Tower	\$16540
542300XX	Removable Side Curtain	\$1580
54230000	Towing Kit	\$524

BALLSTOPS



CUSTOMIZABLE

Powder Coat



*Gray and Black powder coat available in Gloss or Flat

12' - 40' TALL BALLSTOP SYSTEMS

- 12', 15' and 20' use 4" diameter, 1/8" wall aluminum tube - #42A netting
- 25' and 30' use 6" Sch 40 aluminum tube - #42A netting
- 35' and 40' use 6" Sch 40 steel tube - #42A netting
- All Poles 12'-40' have a vertical support cable for additional net support
- Ground sleeves included
- **All poles are now powder coated in architectural black - Other colors available for an additional cost**
- **5 Year Warranty**

739012	12' Ball Stop; Straight Pole Starter (20' x 12')	\$1620
732012A	12' Ball Stop; Straight Pole Add-On (20' x 12')	\$923
739015	15' Ball Stop; Straight Pole Starter (20' x 15')	\$1745
739015A	15' Ball Stop; Straight Pole Add-On (20' x 15')	\$990
739120	20' Ball Stop; Offset Pole Starter (20' x 20')	\$1925
739120A	20' Ball Stop; Offset Pole Add-On (20' x 20')	\$1170
739020	20' Ball Stop; Straight Pole Starter (20' x 20')	\$1845
739020A	20' Ball Stop; Straight Pole Add-On (20' x 20')	\$1130
739025	25' Ball Stop; Straight Pole Starter (20' x 25')	\$4690
739025A	25' Ball Stop; Straight Pole Add-On (20' x 25')	\$2715
739030	30' Ball Stop; Straight Pole Starter (20' x 30')	\$5155
739030A	30' Ball Stop; Straight Pole Add-On (20' x 30')	\$3010
739035	35' Ball Stop; Straight Pole Starter (20' x 35')	\$5125
739035A	35' Ball Stop; Straight Pole Add-On (20' x 35')	\$3020
739040	40' Ball Stop; Straight Pole Starter (20' x 40')	\$5830
739040A	40' Ball Stop; Straight Pole Add-On (20' x 40')	\$3445

10' TALL BALLSTOP SYSTEMS

The 10' Tall Ballstop Systems were designed to be set up and removed as needed and are available as above ground or in ground installation.

- Net: #504 Weather treated 1 3/16" square mesh with 1/4" roped edge and 180 lb break strength
- Net is supported at the top and held in place at their bottom by 1/8" vinyl covered steel cable
- The 8062 is a portable system which uses a platform base with wheels that is weighted down by four 5 gallon jugs (included)
- The 807 is installed in aluminum ground sleeves (caps are included for use when poles are removed)
- **Purchase one starter unit and as many additional units as needed to reach your desired overall length (Sold in 20' lengths)**
- **All poles are now powder coated in architectural black - Other colors available for an additional cost**
- **5 Year Warranty**

8062	Portable Starter Unit (10' x 20')	\$1950
8062A	Portable Additional Unit (10' x 20')	\$1140
807	Sleeved Starter Unit (10' x 20')	\$641
807A	Sleeved Additional Unit (10' x 20')	\$461



On all Gill Ballstops
Call for Details.



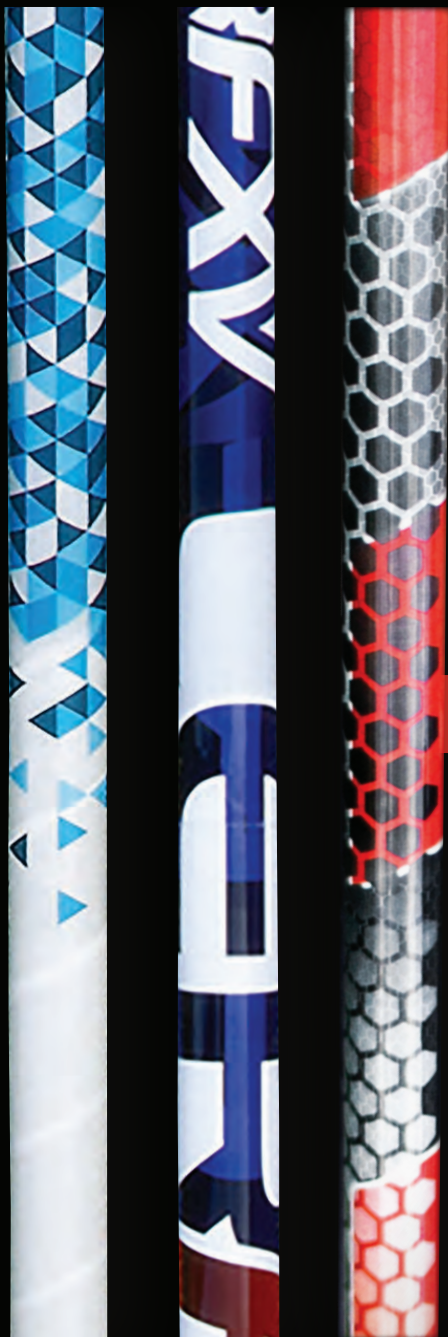
**FROM NOVICE TO
ELITE, WE HAVE
YOU COVERED.**

Get the right pole for your vaulters.

New lengths available! Pages 20-27

**ONE-YEAR WARRANTY
ON EVERY PACER POLE**

**QUICK SHIP
24-HR SHIPPING ON ALL
FIBERGLASS POLES**



OFFICIAL TRACK & FIELD
EQUIPMENT SUPPLIER

ONE FKV COMPOSITE



601 Mercury Drive
Champaign, IL 61822
USA

OFFICIAL
PARTNER



OFFICIAL TRACK & FIELD
EQUIPMENT SUPPLIER

PRESORTED STD
U.S. Postage
PAID
LITANIA SPORTS
GROUP

INNOVATORS IN THE SPORT OF **TRACK & FIELD**



2020 TRACK+FIELD CATALOG

GILLATHLETICS.COM
601 MERCURY DRIVE | CHAMPAIGN, IL 61822

800.637.3090
SALES@GILLATHLETICS.COM

Prefer an E-Catalog instead? To unsubscribe from future mailings go to www.litaniaspports.com/unsubscribe