

# TRACK & FIELD

# 2023

**GILL**<sup>®</sup>  
ATHLETICS

800.637.3090



OFFICIAL TRACK & FIELD  
EQUIPMENT SUPPLIER

GILLATHLETICS.COM

**QUALITY.  
COMMITMENT.  
INNOVATION.**

*Harry L Gill*

**GILL**<sup>®</sup>  
**ATHLETICS**

*Since 1918, Gill Athletics<sup>®</sup> has empowered coaches with innovative equipment that develops track athletes and elevates the sport across the globe.*

# WHAT'S INSIDE



**FACILITIES CHECKLIST**  
Make remembering what you need easier!



## 02 JUMPS

- 04 Landing Systems
- 07 Custom Pit Graphics
- 12 Standards
- 16 Box Collars, Base Pads & Platforms
- 18 Track Shelters & Pit Garages
- 20 Crossbars & Accessories
- 22 Vaulting Poles
- 30 Vault Accessories

## 32 SPRINTS & HURDLES

- 34 Starting Blocks
- 38 Hurdles
- 42 Hurdle Accessories

## 44 MEETS

- 46 Displays
- 48 Measuring Devices & Cameras
- 50 Starting Devices
- 52 Track Accessories & Maintenance
- 56 Cross Country & Portable Tents

## 58 THROWS

- 60 Discus
- 64 Hammers & Shots
- 66 Throw Accessories
- 69 Javelins & Accessories
- 77 Implement Accessories

## 78 TRAINING

- 80 Speed Development
- 83 Med Balls
- 84 Jump Training & Testing
- 88 Agility Training
- 90 Bodyweight Training
- 92 Weight Bars & Plates
- 94 Flexibility & Rehab

## 96 FACILITIES

- 98 Hammer Cages
- 102 Discus Cages
- 106 Discus, Shot & Indoor Cages
- 108 Circles & Toeboards
- 110 Takeoff Boards & Curbing
- 112 Vault Boxes & VersaCom Boxes
- 114 Sand Pit Forms & Covers
- 116 Steeplechase
- 118 Raised Runways & Ballstops

2023 Litan Sports Group, Inc, Gill Athletics, PowerMax, Pacer are all registered trademarks of Gill Athletics, Inc. Gill Essentials, Maximus, SafetyMax, AGX, Pacer One, PacerFXV, Pacer Composite, Continuum, Fusion, Carbon 1, Hollowood Star, Orbiter, OTE, Tru-Flight, T2-Fiber, Tufmesh Plus, Durallife, are all trademarks of Gill Athletics, Inc. NCAA is a registered trademark of The National Collegiate Athletic Association.

## CHECK OUT OUR GREAT **NEW** PRODUCTS

Featured here and online at: [www.GILLATHLETICS.com](http://www.GILLATHLETICS.com) / **NewProducts**

Prices effective from October 1, 2022 through September 30, 2023

RAISE

THE

BAR





# **LANDING SYSTEMS**

## LANDING SYSTEMS

For over 100 years, Gill Athletics® has kept coaches focused on their athletes with equipment they can take for granted. Our pole vault and high jump landing systems are engineered by collegiate athletes, professionals, and coaches alike. Both the NCAA® and NFHS® have partnered with us as we join to support every athlete's competitive journey and aspiration.

### DOUBLE FRONT SYSTEMS

Available on G4, G6, and AGX M4. Call for Details.



#### SIDE CARABINER CONNECTION:

Top Pad is connected to base pads with carabiner side attachments, eliminating any obstruction on top of the pit. This exclusive attention to detail provides an obstruction-free landing area with athletes' safety in mind.



#### OPTIMAL PIT ENTRY ANGLE:

An ASTM approved vault box collar changes the slope of the tri-slant area when vaulting poles rotate. Gill's thoughtful pit entry design accounts for the box collar's effect by featuring a vaulter friendly angle.

## GILL LANDING SYSTEMS FEATURES\*

### Top Pads

**EDGE-TO-EDGE TOP PAD:** Aesthetic and functional design eliminates spike contact with base units and unevenness at the edge of the pit. This Gill exclusive feature will increase the life of your new pit and improve safety near the edges.

**TUFMESH PLUS™ CASING:** Using exclusive 17 x 11 1000 denier material increases the life of your top pad and stands up to repeated use better than any other landing system.

**2" DURALIFE™ FOAM:** Soft and durable foam creates confidence in every practice. Coaches can teach with assurance because of this industry leading design.

**V-LOOP VINYL STRAP:** Designed to evenly distribute the force from the athlete's landing, V-Loop straps eliminate tears compared to traditionally designed pits that put undue stress on the seams.

**REVERSIBLE:** Extend the life of your pit, Gill's top pads are designed to use either side safely and easily.

### Vinyl Base Units

**ALL-VINYL BASE:** Exclusive to Gill landing systems, this unique design keeps water out of your pit better than traditional mesh top units. To extend the life of your pit you keep water out of the foam. Gill's all-vinyl design gets results.

**COMPLETE INTERCHANGEABILITY:** Reversible sections for maximum interchangeability. This adds years to the life of your pit by maximizing the usage and size of the athlete's landing area.

**QUADRUPLE DURALIFE LAYER FOAM:** Athletes need to know they are landing safely and comfortably. Gill's new QUADRUPLE Duralife foam is 25% softer than others yet with firmness necessary for the safest landings.

**DUAL COATED VINYL:** Evenly distributed 1000 x 1000 denier polyester fabric is bonded on both sides with 18oz knife-coated PVC vinyl. This exclusive fabric design eliminates vinyl delamination seen in other pits after years of use. This creates the most durable casing that is lighter than the other pits.

**STITCHING:** Gill's entire landing system is stitched with the industry's strongest 210 bonded polyester thread. Simply put, your new Gill pit comes triple stitched with the toughest thread in the industry to hold up to high volume practices.

**GRIP STRIP FASTENING SYSTEM:** A pit is safest when constructed as an integrated system. Gill's Grip Strip Fastening System will keep your base sections functioning as one unit season after season.

**ECO-SMART COMPRESS PACKS:** Gill Athletics cares about the environment and your budget. All landing systems are expertly packed and shipped utilizing Compress-Pack shipping, reducing freight volume lowering fuel consumption and shipping costs. Pits restore to original size and shape minutes after unpacking.

**12 YEAR WARRANTY:** A long-term warranty is only as dependable as the company standing behind it. And after 100 years, you can count on Gill to stand behind your landing system for years to come. If any failure occurs in the first 12 years, under normal use and care, we will repair or replace the damaged part. Essentials line includes 5 year warranty.

**CUSTOM COLOR AND GRAPHICS:** Choose from over 100 unique vinyl casing and top pad color combinations offered at NO EXTRA CHARGE! Select your vinyl casing (xx) and top pad (yy) color combination. Add distinction with multi-color graphics on the top pad, weather cover, or both.

*\*Features May Exclude Essentials Systems*



### CUSTOMIZABLE SYSTEMS

See color charts on page 7 to replace the XX and YY in the item numbers.



**SEE IT ONLINE!**

Visit [GillAthletics.com](http://GillAthletics.com) and build your custom pit!

## CUSTOM PRINTING

### ULTIMATE CUSTOM PRINTING

Fully customizable Edge-To-Edge top pad printing and side panel casing graphics are available for **landing systems and weather covers**. With nearly limitless custom printing options, call today to learn more about the ultimate in customization. 3 Year limited warranty on all custom printed graphics.

*\*Excludes Essentials Systems*



*As shown: EDGE-TO-EDGE custom 100% Top Pad Graphic, and PV Side Panel Graphic options.*





## GILL LANDING SYSTEMS PRINTING\*

Add logo, school name, or edge-to-edge design to any landing system top pad, side panel or weather cover. Multi-color graphic is screen printed in dimensioned areas shown below. Custom graphic selections are printed on same color mesh as top pad, eliminating the white box. **Vector artwork must be provided.** \*Features Exclude Essentials Systems

### Top Pads & Covers

**SQUARE:** Coaches Box Graphic - 60" x 60"

9451 Landing System Graphic

9452 Weather Cover Top

**OVERSIZED:** Oversized Coaches Box Graphic - 90" x 110"

9454 Landing System Graphic

9455 Weather Cover Top

**HORIZONTAL:** Horizontal Graphic - 55" x 240"

9552 Landing System Graphic

9557 Weather Cover Top

**PV FRONT EXTENSION:** Top Pad Graphic (Choice of Horizontal or Vertical graphics)

9553 Landing System Graphic

9558 Weather Cover Top

**EDGE-TO-EDGE:** Custom 100% Top Pad Graphic

9554 PV Landing System Graphic

9559 PV Weather Cover Top

9554 HJ Landing System Graphic

9559 HJ Weather Cover Top

### Vinyl Base & Sides

**PV SIDE PANEL:** Side Panel Graphic - 14" x 156"

9456 Landing System Graphic

9457 Weather Cover Side Panel

**HJ SIDE PANEL:** Side Panel Graphic - 9" x 108"

9456 Landing System Graphic

9457 Weather Cover Side Panel

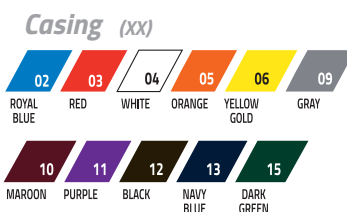


On all Gill Landing Systems Graphics



## COLOR SELECTION

To specify color with order, use the two-digit number of your color selection to replace XX & YY in the item number.



**SEE IT ONLINE!**

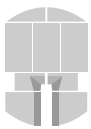
Visit [GillAthletics.com](http://GillAthletics.com) and build your custom pit!

## POLE VAULT LANDING SYSTEMS



### DOUBLE FRONT LANDING SYSTEMS

Available on G4, G6, and AGX M4. Call for Details.



OFFICIAL EQUIPMENT SUPPLIER TO THE  
NCAA TRACK & FIELD CHAMPIONSHIPS

### AGX M4 PV LANDING SYSTEM

- 21' 6" x 31' 2" x 32" // 6.55m x 9.50m x 0.81m
- 2" Top Pad
- 21' in back of the vault box
- Meets World Athletics, NCAA and NFHS specifications
- 12 year warranty

66817CXXYY Landing System 

6681702CXX Weather Cover

### CUSTOMIZE IT!

MULTIPLE COLOR COMBINATIONS

\*Custom Graphics available. See page 7.





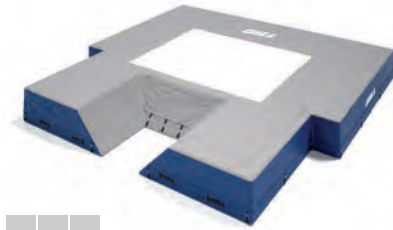
On all Gill Landing Systems\*  
Call for Details.

\*Excludes Essentials. 5 Year Warranty on Essentials.



**CUSTOMIZABLE SYSTEMS**

See color charts on page 7 to replace the XX and YY in the item numbers.



### ESSENTIALS™ PV LANDING SYSTEM

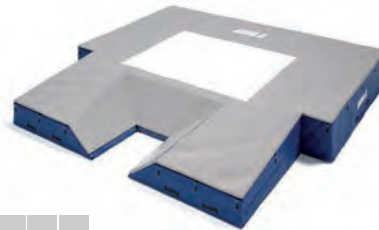
- 19' 9" x 20'2" x 26" // 6.02m x 6.15m x 0.66m
- Skirted Mesh Top Holds Unit in Place
- Royal blue vinyl with gray skirted mesh top only
- **Meets NFHS specifications**
- **5 year warranty**

653 Landing System

65302 Weather Cover

**VP300** Essentials PV Valuepack

INCLUDED: Essentials PV System, Weather Cover, 7100 Essentials PV Standards, 61517CXX Base Pads, 523 Essentials PV Crossbar



### S1 PV LANDING SYSTEM

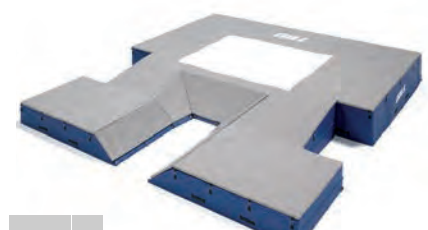
- 20' x 20' 2.5" x 28" // 6.1m x 6.16m x 0.71m
- 2" Top Pad
- 16' 7" in back of the vault box
- **Meets NFHS specifications**
- **12 year warranty**

65417CXXYY Landing System

6541702CXX Weather Cover

**VP65417CXXYY** S1 PV Valuepack

INCLUDED: S1 PV System, Weather Cover, 77100 S4 PV Standards, 61517CXX Base Pads, 523 Essentials PV Crossbar



### S4 PV LANDING SYSTEM

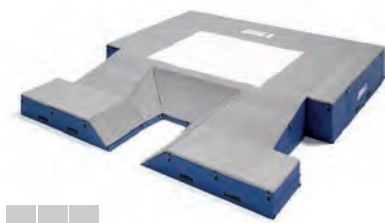
- 21' 6" x 24' x 28" // 6.55m x 7.32m x 0.71m
- 2" Top Pad
- 16' 7" in back of the vault box
- **Meets NFHS specifications**
- **12 year warranty**

65817CXXYY Landing System

6581702CXX Weather Cover

**VP65817CXXYY** S4 PV Valuepack

INCLUDED: S4 PV System, Weather Cover, 77100 S4 PV Standards, 61517CXX Base Pads, 523 Essentials PV Crossbar



### G1 PV LANDING SYSTEM

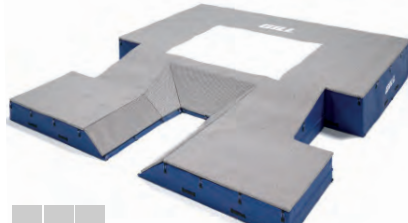
- 20' x 21'11" x 32" // 6.10m x 6.68m x 0.81m
- 2" Top Pad
- 16' 7" in back of the vault box
- **Meets NCAA and NFHS specifications**
- **12 year warranty**

66217CXXYY Landing System

6621702CXX Weather Cover

**VP66217CXXYY** G1 PV Valuepack

INCLUDED: G1 PV System, Weather Cover, 77200C12 G4 PV Standards, 61617CXX Base Pads, 526 Gill Collegiate PV Crossbar

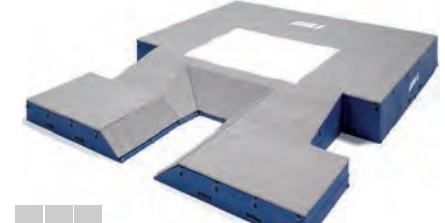


### G4 PV LANDING SYSTEM

- 21' 6" x 24' x 32" // 6.55m x 7.32m x 0.81m
- 2" Top Pad
- 16' 7" in back of the vault box
- **Meets NCAA and NFHS specifications**
- **12 year warranty**

66317CXXYY Landing System

6631702CXX Weather Cover



### G6 PV LANDING SYSTEM

- 21' 6" x 27' x 32" // 6.55m x 8.23m x 0.81m
- 2" Top Pad
- 19'7" in back of the vault box
- **Meets Word Athletics, NCAA and NFHS specifications**
- **12 year warranty**

66517CXXYY Landing System 

6651702CXX Weather Cover



OFFICIAL TRACK & FIELD EQUIPMENT SUPPLIER

## HIGH JUMP LANDING SYSTEMS


**CUSTOMIZE IT!**  
SHOW YOUR SCHOOL PRIDE

\*60 x 60 Top Pad Printing shown. See page 7.

### G4 HJ LANDING SYSTEM

- 20' x 13' 2" x 28" // 6.10m x 4.01m x 0.71m
- 2" Top pad
- Added safety cutout
- Meets World Athletics, NCAA and NFHS specifications
- 12 year warranty



64417CXXYY Landing System 

6441702CXX Weather Cover



OFFICIAL EQUIPMENT SUPPLIER TO THE  
NCAA TRACK & FIELD CHAMPIONSHIPS

### AGX M4 HJ LANDING SYSTEM

- 27' 2" x 13' 2" x 28" // 8.29m x 4.01m x 0.71m
- 2" Top pad
- Added safety cutout
- Meets World Athletics, NCAA and NFHS specifications
- 12 year warranty



64817CXXYY Landing System 

6481702CXX Weather Cover



\*Ultimate Custom Printing shown:  
Horizontal Top Pad Graphic.



**On all Gill Landing Systems\*  
Call for Details.**

\*Excludes Essentials. 5 Year Warranty on Essentials.



**CUSTOMIZABLE SYSTEMS**

See color charts on page 7 to replace the XX and YY in the item numbers.



**ESSENTIALS™ HJ LANDING SYSTEM**

- 16' x 8' x 24" // 4.88m x 2.44m x 0.61m
- Skirted mesh top holds unit in place
- Royal blue vinyl with gray skirted mesh top only
- **Meets NFHS specifications**
- **5 year warranty**

**640A** Landing System

**640A02** Weather Cover

**VP405** Essentials HJ Valuepack

*INCLUDED: Essentials HJ System, Weather Cover, 700 Essentials HJ Standards, 522 Essentials HJ Crossbar*



**S1 HJ LANDING SYSTEM**

- 16'6" x 8' x 26" // 5.03m x 2.44m x 0.66m
- 2" Top pad
- **Meets NFHS specifications**
- **12 year warranty**

**64117CXXYY** Landing System

**6411702CXX** Weather Cover

**VP64117CXXYY** S1 HJ Valuepack

*INCLUDED: S1 HJ System, Weather Cover, 78105 S4 HJ Standards, 522 Essentials HJ Crossbar*



**S4 HJ LANDING SYSTEM**

- 16' 6" x 10' x 26" // 5.03m x 3.05m x 0.66m
- 2" Top pad
- Added safety cutout
- **Meets NCAA and NFHS specifications**
- **12 year warranty**

**64217CXXYY** Landing System

**6421702CXX** Weather Cover

**VP64217CXXYY** S4 HJ Valuepack

*INCLUDED: S4 HJ System, Weather Cover, 78105 S4 HJ Standards, 522 Essentials HJ Crossbar*



**G1 HJ LANDING SYSTEM**

- 18' x 10' x 26" // 5.49m x 3.05m x 0.66m
- 2" Top pad
- Added safety cutout
- **Meets NCAA and NFHS specifications**
- **12 year warranty**

**64617CXXYY** Landing System

**6461702CXX** Weather Cover

**VP64617CXXYY** G1 HJ Valuepack

*INCLUDED: G1 HJ System, Weather Cover, 78200C12 G4 HJ Standards, 525 Gill Collegiate HJ Crossbar*



## POLE VAULT STANDARDS

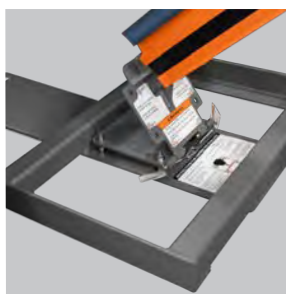


OFFICIAL EQUIPMENT SUPPLIER TO THE  
NCAA TRACK & FIELD CHAMPIONSHIPS

### AGX M4 POLE VAULT STANDARDS

- Dual hand crank system simplifies and speeds up height transitions
- Height range from 6' 6" to 21'
- Exclusive 2" safety pad increases safety of athletes and reduces vaulting pole damage
- Dual positional locking system; Practice Mode creates quick bar height changes while Competition Mode locks in peg height during jumps
- Internal measuring tape displays Metric and English units
- Quick hand crank crossbar depth adjustment from 0cm to 80cm
- Exclusive customizable offset width between pins from 4.30m-4.37m
- Steel base for stability during use and Easy-Port hinge technology for quicker location movement
- Strong aluminum profile increases aesthetics, functionality, and customization
- Customize 2" safety pad with choice of color and graphics
- Use the two-digit number of your vinyl color selection to replace XX in the item number
- Use the two-digit number of your powder coat color selection to replace YY in the item number
- Meets NFHS, NCAA, and World Athletics specifications
- 10 year warranty

740110CXXYYSP



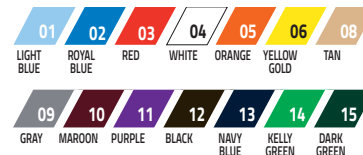
MANUAL DEPTH ADJUSTMENTS

### AGX M2 POLE VAULT STANDARDS

- Includes high-end features from the AGX M4 Standard except with manual depth adjustments
- Height ranges 6'9" to 21'6"
- Meets NFHS, NCAA, and World Athletics specifications
- 10 year warranty

77300CXXYYSP

#### Vinyl



#### Powder Coat



BASE PADS

See page 16



On all Gill Standards®  
Call for Details.

\*Excludes Essentials. 5 Year Warranty on Essentials.



77200C02

#### G4 POLE VAULT STANDARDS

- Constructed of heavy duty aluminum uprights and risers with custom glide parts for smooth operation
- Weighted steel base includes leveling feet and wheels for easy mobility
- Clamping mechanism pulls upright and riser together to hold desired height
- Height adjustment: 10' 3" to 21' with adjustable height readout window display
- Reads both English and Metric measurements
- 55mm bar rest pins and 8 base anchors included
- Meets NFHS, NCAA, and World Athletics specifications, World Athletics certified
- 10 year warranty

77200CXX 



#### S4 POLE VAULT STANDARDS

- Constructed of heavy duty aluminum uprights and risers with custom glide parts for smooth operation
- Weighted steel base includes wheels for easy mobility
- Clamping mechanism pulls upright and riser together to hold desired height
- Height adjustment: 7' to 18'
- Reads both English and Metric measurements
- Meets NFHS and NCAA specifications
- 10 year warranty

77100



#### ESSENTIALS™ POLE VAULT STANDARDS

- Full steel tubing construction gives added strength
- Height adjustment: 6' to 16'
- Reads both English and Metric measurements
- Upright detaches from base rails for improved storage
- Wide stance base for added stability
- 75mm bar rest pins and 8 base anchors included
- Meets NFHS specifications
- 5 year warranty

7100



#### AGX POLE VAULT STANDARD CARTS

Cart designed for easy transportation and storage of the AGX M4 Pole Vault Standard Uprights. Carts are sold in pairs.

73315020



#### PV STANDARD UPRIGHT PAD

- Protects competitors, pole, and standards from harm
- Fits snug around the standard facing the inside of the pit
- Open back allows for setting of height and tightening of knobs
- High density foam in vinyl casing
- Customizable Color

731109CXX



71252 Shown

#### OFFSET EXTENSION

- 71252 adds additional 2' to Gill standards: 77100 and 77200CXX
- 71253 adds additional 4' to Gill standards: 77100 and 77200CXX
- Fits any standards with 1.25" square offsets
- Comes in safety orange color

71252

71253

## HIGH JUMP STANDARDS



OFFICIAL EQUIPMENT SUPPLIER TO THE  
NCAA TRACK & FIELD CHAMPIONSHIPS

### AGX M4 HIGH JUMP STANDARDS

- Simple height adjustments with unique thumb button and handle assist
- Choose your team's powder coat color for complete customization
- Customize exclusive 2" safety pad with choice of color and graphics
- High-visible English or Metric unit height indicator display for fans, coaches, and athletes
- Eye-level height indicator color coordinated with dual bar rest system
- Exclusive steel powder coated weighted base with wheels for increased stability and easy transportation
- Height range from 1' to 8' 3"
- Use the two-digit number of your vinyl color selection to replace XX in the item number
- Use the two-digit number of your powder coat color selection to replace YY in the item number
- Meets NFHS, NCAA, and World Athletics specifications
- 10 year warranty

740120CXXYYSP



### AGX M4 HIGH JUMP BASE PADS

Specifically designed for AGX M4 High Jump Standards.

- Use the two-digit number of your vinyl color selection to replace XX in the item number

708CXX

#### Vinyl



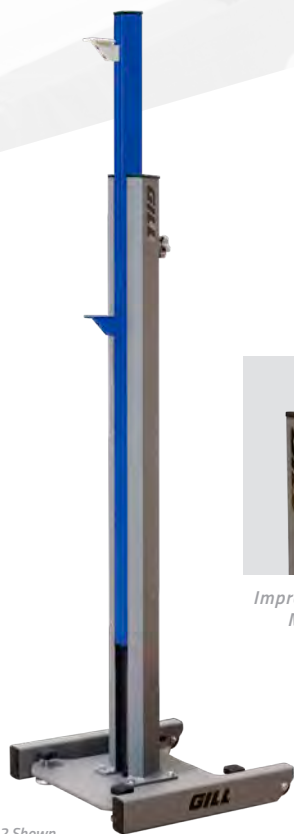
#### Powder Coat



On all Gill Standards\*  
Call for Details.

\*Excludes Essentials. 5 Year Warranty on Essentials.

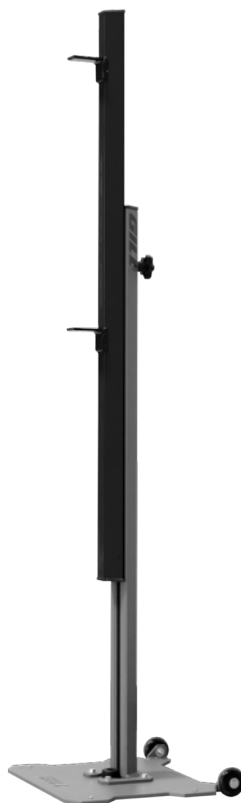




78200C02 Shown



Improved Clamping Mechanism



### G4 HIGH JUMP STANDARDS

- Constructed of heavy duty aluminum uprights and risers with custom glide parts for smooth operation
- Weighted steel base includes wheels for easy mobility and leveling feet
- Clamping mechanism pulls upright and riser together to hold desired height
- Height adjustment: 2'8" - 8'4" with adjustable height readout window display
- Reads both English and Metric measurements.
- *Meets NFHS, NCAA and World Athletics specifications*
- *10 year warranty*

78200CXX



### S4 HIGH JUMP STANDARDS

- Constructed of heavy duty aluminum uprights and risers with custom glide parts for smooth operation
- Weighted steel base includes wheels for easy mobility
- Clamping mechanism pulls upright and riser together to hold desired height
- Height adjustment: 2' - 7'4"
- Reads both English and Metric measurements
- *Meets NFHS and NCAA specifications*
- *10 year warranty*

78105

### ESSENTIALS™ HIGH JUMP STANDARDS

- Square steel construction with durable black powder coat finish
- Weighted base includes wheels for easy mobility
- Height adjustment: 2' to 8'
- Reads both English and Metric measurements
- *Meets NFHS and NCAA specifications*
- *5 year warranty*

700



### HIGH JUMP STANDARD BASE PADS

- Provides additional safety during high jump event
- 2" thick foam pad encased in yellow vinyl

707

## LANDING SYSTEM ACCESSORIES



2534



OFFICIAL EQUIPMENT SUPPLIER TO THE  
NCAA TRACK & FIELD CHAMPIONSHIPS



2535



PATENT NO. 8444531

### PIT STOP

- 1/4" Powder coated steel plates
- 1/2" spikes on base secures the plate from shifting
- Pole Vault Pit Stop includes 2 base plates with a connector panel
- High Jump Pit Stop includes 1 base plate
- Compatible with any pole vault or high jump pit

2534 Pole Vault

2535 High Jump

### SAFETYMAX+™ VAULT BOX COLLAR



- Compatible with any style of landing system
- Spike Plate to reduce collar from slipping
- Complies with ASTM standard F2949
- Meets current NCAA and NFHS rules

719 SafetyMax+ Vault Box Collar

71904 Spike Plate Kit



### VAULT PERIMETER PAD

- High school rule requires covering over all exposed hard surfaces surrounding the PV landing area
- 4' x 8' pad is 2" thick high density foam

716



### FLAT BASE PADS

- Fits 28" tall Gill systems and all standards with center-mounted uprights

61517CXX



### LANDING SYSTEM TIE-DOWN KIT

- Decrease the chances of pit 'flying' away
- Increase safety and security of your pits

7081 With Concrete Anchors

7082 With Grass Anchors



### SLOPED BASE PADS

- Fits 32" tall Gill systems and all standards with center-mounted uprights
- Adjustable measurement scale on top of pad
- Meets World Athletics specifications

61617CXX



### SLOPED AGX M2 BASE PADS

- Specifically designed for 77300CXXYYSP AGX M2 Pole Vault Standards.

61817CXX



### SLOPED AGX M4 BASE PADS

- Specifically designed for 740110CXXYYSP AGX M4 Pole Vault Standards.

61717CXX



### CUSTOMIZABLE BASE PADS

See color charts on page 7 to replace the XX in the item numbers.



**ALUMINUM PIT CART**

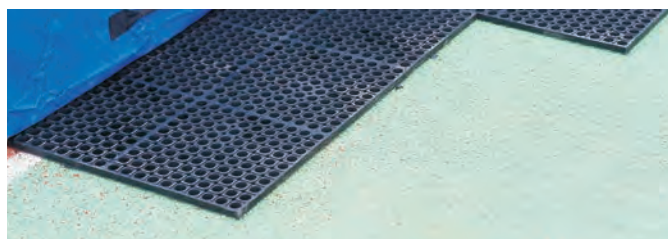
- Deck of cart measures 5' x 10'
- Constructed of quality aluminum planking
- Pneumatic caster wheels have a 12" diameter for easy travel over smooth and rough surfaces
- Deck height is optimal 19"

768

**WOOD DECK PIT CART**

- Deck of cart measures 4' x 8'
- Constructed of MDO exterior plywood for improved weather resistance
- Pneumatic caster wheels have a 12" diameter for easy travel over smooth and rough surfaces
- Deck height is 16"

767



**PLATFORMS FOR LANDING SYSTEMS**

- Support PV and HJ pits above the ground to prevent water damage
- Corrosion resistant aluminum or corrosion resistant rubber construction
- Consist of individual, easy to carry and convenient to store pallets

*Aluminum*

733641	Fits 64117 High Jump System
733642	Fits 64217 High Jump System
733644	Fits 64417 High Jump System
733646	Fits 64617 High Jump System
733648	Fits 64817 High Jump System
733654	Fits 65417 Pole Vault System
733662	Fits 66217 Pole Vault System
733663	Fits 66317 and 65817 Pole Vault System
733665	Fits 66517 Pole Vault System
733668	Fits 66817 Pole Vault System

*Rubber*

734641	Fits 64117 High Jump System
734642	Fits 64217 High Jump System
734644	Fits 64417 High Jump System
734646	Fits 64617 High Jump System
734648	Fits 64817 High Jump System
734654	Fits 65417 Pole Vault System
734662	Fits 66217 Pole Vault System
734663	Fits 66317 and 65817 Pole Vault System
734665	Fits 66517 Pole Vault System
734668	Fits 66817 Pole Vault System



**WATER SHED INSERT**

- Guaranteed to increase the life of your HJ and PV pits
- Prevents water pooling on your pit which destroys your foam

709

## SHELTERS & BENCHES

### PORTABLE TRACK SHELTER

Steel frame is mounted on swivel casters. 360 degree seating surrounds a center storage shelf. Roof frame is constructed of aluminum bracing with architectural gray powder coat. Canopy is tensioned with a one-piece vinyl wrap. Custom color and graphic application available on canopy top.

54240CXXSP Portable Track Shelter with Graphics



### CUSTOMIZABLE

#### Vinyl



\*Specify powder coat color with order, use the two-digit number of your color selection to replace XX in the item number.



72081

### ALUMINUM BENCHES

#### PORTABLE BENCHES

- 72081 8' Bench, Aluminum Finish
- 72081CXX 8' Bench, Powder Coat
- 72161 16' Bench, Aluminum Finish
- 72161CXX 16' Bench, Powder Coat



73081

### ALUMINUM BENCHES WITH BACKREST

#### PORTABLE BENCHES

- 73081 8' Bench, Aluminum Finish
- 73081CXX 8' Bench, Powder Coat
- 73161 16' Bench, Aluminum Finish
- 73161CXX 16' Bench, Powder Coat

### COLORS

#### Powder Coat



# PIT GARAGES



## PIT GARAGES

- Protect your PV or HJ investment from the elements
- Keep rain, snow, and vandals away
- Easily moves on and off position with the help of a few people
- Use the two-digit number of your color selection to replace XX in the item number

**881018CXX** 21' X 10' 6" High Jump Pits or Smaller

**881425CXX** 28' 5" X 13' 8" High Jump Pits or Smaller

**882120CXX** 20' 3" X 21' 11" Pole Vault Pits or Smaller

**883022CXX** 22' X 32' Pole Vault Pits or Smaller

**GILLINSTALLHJG** High Jump Pit Garage Factory Installation

**GILLINSTALLPVG** Pole Vault Pit Garage Factory Installation

- Snow Load Kits available for areas with inclement weather

## COLORS



POLE VAULT



HIGH JUMP

## CROSSBARS



### AGX™ COUNTERVAIL CROSSBARS

- Includes high-end features of the AGX Crossbar with added Countervail™ Vibration Cancelling Technology
- Countervail strengthens the crossbar creating minimal sag
- Dampens 40% quicker than other crossbars
- *Meets NFHS, NCAA and World Athletics specifications, World Athletics certified*



535 High Jump

536 Pole Vault



### AGX™ CROSSBARS

- Exclusive half moon profile ends lower the center of gravity of the bar
- Heaviest crossbar the rules allow
- Shorter, more stable, end pieces redesigned for improved performance
- Features durable thick-walled pulltruded fiberglass rod
- *Meets NFHS, NCAA and World Athletics specifications, World Athletics certified*



INSPECT CROSSBARS FOR  
VISIBLE AND CONCEALED DAMAGE  
BEFORE ACCEPTING DELIVERY

CROSSBARS ARE NOT  
GUARANTEED AGAINST BREAKAGE

529 High Jump 

530 Pole Vault 



### BEST SELLER!

### GILL® COLLEGIATE CROSSBARS

- Features durable thick-walled pulltruded fiberglass rod
- Minimum sag
- Order sets of three to help offset expensive shipping costs
- *Meets NFHS, NCAA and World Athletics specifications, World Athletics certified*

525 High Jump 

5253 High Jump (3) 

526 Pole Vault 

5263 Pole Vault (3) 



### ESSENTIALS™ CROSSBARS

- Features durable pulltruded fiberglass rod
- Excellent choice for high school competitions
- Order sets of three to help offset expensive shipping costs
- *Meets NFHS specifications*

522 High Jump

5223 High Jump (3)

523 Pole Vault

5233 Pole Vault (3)

### 3-PIECE CROSSBARS

- Crossbar kit that ships by UPS instead of truck
- Reduced shipping charges
- Can be shipped UPS overnight
- Utilizes same durable thick-walled pultruded fiberglass as Collegiate Crossbars
- *Meets NFHS and NCAA specifications*



538 High Jump

539 Pole Vault



E73708



### PV/HJ MEASURING STICK

- 59" tall aluminum measuring stick brings laser readout closer to eye level
- Use for both High Jump and Pole Vault events
- Simple to use: Utilize viewfinder to line up crossbar and press the button
- Measure in either English or Metric units
- Minimum measurement is 1.54m (5' 1/2"), No maximum measurement

E73708 Stick and Laser



### PUTTER UPPER

- Simplest crossbar placer ever made
- Fits over the end of any vaulting pole

710390



### TELESCOPING CROSSBAR PLACER

- Facilitate easy placement of crossbars at all heights
- Telescoping pole extends 6' to 12' in 6" increments
- Thumb mechanism allows for quick adjustment

950



### ELASTIC CROSSBAND

- Training crossbar for PV and HJ
- Bright fluorescent orange elastic tubing
- 1" diameter foam sections

528

TEAMPACER.COM

 **PACER**<sup>®</sup>

ONE **FXV** COMPOSITE

LIVE  
TO  
VAULT







**POLES**

# ONE



 **1** YEAR  
WARRANTY

*ON EVERY PACER POLE*

**QUICK  
SHIP** 

*AVAILABLE FOR ALL PACER  
FIBERGLASS POLES*

*A full-line of vaulting poles designed for every vaulter, allowing smooth transition from pole to pole no matter the length, weight, or model. The ONLY vaulting pole with a 1 Year warranty.*

*From novice to elite, Pacer has you covered.*

# THE PACER® ADVANTAGE

The Pacer® ONE is a versatile, economical pole perfect for the beginning vaulter. Our design patterns create a “slow down” of the bend allowing more time to rotate into a vertical position. Available 9’ to 13’ in 10 lb increments, the Pacer ONE is sure to get your vaulters to the next level. 1 Year Warranty.



## 9’ (2.75M)

ITEM #	TEST WT	TIP
527527	60 lb	21
527532	70 lb	21
527536	80 lb	21
527541	90 lb	21
527545	100 lb	21

## 11’ (3.35M)

ITEM #	TEST WT	TIP
533536	80 lb	21
533541	90 lb	21
533545	100 lb	21
533550	110 lb	21
533554	120 lb	21
533559	130 lb	21
533563	140 lb	21
533568	150 lb	21

## 12’6” (3.81M)

ITEM #	TEST WT	TIP
537545	100 lb	21
537550	110 lb	21
537554	120 lb	21
537559	130 lb	18
537563	140 lb	18
537568	150 lb	16
537573	160 lb	16
537577	170 lb	16

## 10’ (3.10M)

ITEM #	TEST WT	TIP
531032	70 lb	21
531036	80 lb	21
531041	90 lb	21
531045	100 lb	21
531050	110 lb	21
531054	120 lb	21
531059	130 lb	21

## 11’6” (3.51M)

ITEM #	TEST WT	TIP
535541	90 lb	21
535545	100 lb	21
535550	110 lb	21
535554	120 lb	21
535559	130 lb	21
535563	140 lb	21
535568	150 lb	21

## 13’ (3.96M)

ITEM #	TEST WT	TIP
540050	110 lb	18
540054	120 lb	18
540059	130 lb	18
540063	140 lb	16
540068	150 lb	16
540073	160 lb	13
540077	170 lb	13
540082	180 lb	13

## 10’6” (3.20M)

ITEM #	TEST WT	TIP
532532	70 lb	21
532536	80 lb	21
532541	90 lb	21
532545	100 lb	21
532550	110 lb	21
532554	120 lb	21
532559	130 lb	21
532563	140 lb	21

## 12’ (3.66M)

ITEM #	TEST WT	TIP
536041	90 lb	21
536045	100 lb	21
536050	110 lb	21
536054	120 lb	21
536059	130 lb	18
536063	140 lb	18
536068	150 lb	16
536073	160 lb	16

VAULTING POLES ARE NOT  
GUARANTEED AGAINST BREAKAGE

INSPECT VAULTING POLES FOR  
VISIBLE AND CONCEALED DAMAGE  
BEFORE ACCEPTING DELIVERY

### COMPETITION POLE TIPS

Tough, durable polyurethane for a softer plant and long lasting performance.



700002, 700004, 700005, 700007, 700010,  
700013, 700016, 700018, and 700021

# FXV



**NEW! 5lb WT INCREMENTS**

**11'**  
(3.35M)

ITEM #	TEST WT	TIP
733536	80 lb	21
733539	85 lb	21
733541	90 lb	21
733543	95 lb	21
733545	100 lb	21
733547	105 lb	21
733550	110 lb	21
733552	115 lb	21
733554	120 lb	21
733557	125 lb	21
733559	130 lb	21
733561	135 lb	21
733563	140 lb	18
733566	145 lb	18
733568	150 lb	18

**12'**  
(3.66M)

ITEM #	TEST WT	TIP
736045	100 lb	21
736047	105 lb	21
736050	110 lb	21
736052	115 lb	21
736054	120 lb	21
736057	125 lb	21
736059	130 lb	18
736061	135 lb	18
736063	140 lb	18
736066	145 lb	18
736068	150 lb	18
736070	155 lb	18
736073	160 lb	18

**13'**  
(3.96M)

ITEM #	TEST WT	TIP
740050	110 lb	18
740052	115 lb	18
740054	120 lb	18
740057	125 lb	18
740059	130 lb	18
740061	135 lb	18
740063	140 lb	16
740066	145 lb	16
740068	150 lb	16
740070	155 lb	16
740073	160 lb	13
740075	165 lb	13
740077	170 lb	13
740080	175 lb	13
740082	180 lb	10

**11'6"**  
(3.51M)

ITEM #	TEST WT	TIP
735039	85 lb	21
735041	90 lb	21
735043	95 lb	21
735045	100 lb	21
735047	105 lb	21
735050	110 lb	21
735052	115 lb	21
735054	120 lb	18
735057	125 lb	18
735059	130 lb	18
735061	135 lb	18
735063	140 lb	16
735066	145 lb	16
735068	150 lb	16

**12'6"**  
(3.81M)

ITEM #	TEST WT	TIP
737545	100 lb	21
737547	105 lb	21
737550	110 lb	21
737552	115 lb	18
737554	120 lb	18
737557	125 lb	18
737559	130 lb	18
737561	135 lb	18
737563	140 lb	16
737566	145 lb	16
737568	150 lb	16
737570	155 lb	16
737573	160 lb	16
737575	165 lb	16
737577	170 lb	16

**13'6"**  
(4.11M)

ITEM #	TEST WT	TIP
741554	120 lb	16
741557	125 lb	16
741559	130 lb	16
741561	135 lb	16
741563	140 lb	16
741566	145 lb	16
741568	150 lb	13
741570	155 lb	13
741573	160 lb	13
741575	165 lb	13
741577	170 lb	10
741580	175 lb	10

## THE PACER® ADVANTAGE

The Pacer® FXV vaulting pole is the flagship series of our Pacer line-up. With a design to perform well for all styles of jumpers, the lightweight s-glass is designed for smooth, consistent response as vaulters transition from pole to pole. The Pacer FXV is the perfect pole for greater heights and maximum PRs. Available 11' to 16'9" in 5lb increments. 1 Year Warranty.



### 14' (4.27M)

ITEM #	TEST WT	TIP
742557	125 lb	16
742559	130 lb	16
742561	135 lb	13
742563	140 lb	13
742566	145 lb	13
742568	150 lb	13
742570	155 lb	13
742573	160 lb	13
742575	165 lb	10
742577	170 lb	10
742580	175 lb	7
742582	180 lb	7

### 15' (4.57M)

ITEM #	TEST WT	TIP
746063	140 lb	10
746066	145 lb	10
746068	150 lb	10
746070	155 lb	10
746073	160 lb	10
746075	165 lb	7
746077	170 lb	7
746080	175 lb	7
746082	180 lb	5
746084	185 lb	5

### 16'1 (4.90M)

ITEM #	TEST WT	TIP
749073	160 lb	10
749075	165 lb	10
749077	170 lb	7
749080	175 lb	7
749082	180 lb	5
749084	185 lb	5
749086	190 lb	4
749088	195 lb	4
749091	200 lb	4

### 14'6 (4.42M)

ITEM #	TEST WT	TIP
744059	130 lb	13
744061	135 lb	13
744063	140 lb	10
744066	145 lb	10
744068	150 lb	10
744070	155 lb	10
744073	160 lb	10
744075	165 lb	10
744077	170 lb	7
744080	175 lb	7
744082	180 lb	7
744084	185 lb	7

### 15'6 (4.72M)

ITEM #	TEST WT	TIP
747068	150 lb	10
747070	155 lb	10
747073	160 lb	7
747075	165 lb	7
747077	170 lb	5
747080	175 lb	5
747082	180 lb	4
747084	185 lb	4
747086	190 lb	4
747088	195 lb	4

### 16'5 (5.01M)

ITEM #	TEST WT	TIP
750077	170 lb	7
750080	175 lb	7
750082	180 lb	7
750084	185 lb	5
750086	190 lb	5
750088	195 lb	4
750091	200 lb	4

### 16'9 (5.11M)

ITEM #	TEST WT	TIP
751084	185 lb	5
751086	190 lb	5
751088	195 lb	4
751091	200 lb	4
751093	205 lb	4

# COMPOSITE



## 13' (3.96M)

ITEM #	TEST WT	TIP
340050	110 lb	21
340052	115 lb	18
340054	120 lb	18
340057	125 lb	18
340059	130 lb	18
340061	135 lb	18
340063	140 lb	18
340066	145 lb	18
340068	150 lb	16
340070	155 lb	16
340073	160 lb	16

## 14' (4.27M)

ITEM #	TEST WT	TIP
342557	125 lb	16
342559	130 lb	16
342561	135 lb	16
342563	140 lb	16
342566	145 lb	16
342568	150 lb	13
342570	155 lb	13
342573	160 lb	13
342575	165 lb	13
342577	170 lb	13
342580	175 lb	13
342582	180 lb	10

## 15' (4.57M)

ITEM #	TEST WT	TIP
346063	140 lb	13
346066	145 lb	10
346068	150 lb	10
346070	155 lb	10
346073	160 lb	10
346075	165 lb	10
346077	170 lb	10
346080	175 lb	10
346082	180 lb	7
346084	185 lb	7
346086	190 lb	7

## 13'6" (4.11M)

ITEM #	TEST WT	TIP
341554	120 lb	18
341557	125 lb	18
341559	130 lb	18
341561	135 lb	16
341563	140 lb	16
341566	145 lb	16
341568	150 lb	16
341570	155 lb	16
341573	160 lb	13
341575	165 lb	13
341577	170 lb	13
341580	175 lb	13

## 14'6" (4.42M)

ITEM #	TEST WT	TIP
344059	130 lb	13
344061	135 lb	13
344063	140 lb	13
344066	145 lb	10
344068	150 lb	10
344070	155 lb	10
344073	160 lb	10
344075	165 lb	10
344077	170 lb	10
344080	175 lb	10
344082	180 lb	10
344084	185 lb	10
344086	190 lb	7
344088	195 lb	7

## 15'6" (4.72M)

ITEM #	TEST WT	TIP
347068	150 lb	10
347070	155 lb	10
347073	160 lb	10
347075	165 lb	10
347077	170 lb	10
347080	175 lb	10
347082	180 lb	7
347084	185 lb	7
347086	190 lb	5
347088	195 lb	5

## THE PACER® ADVANTAGE

For advanced aggressive vaulters, the Pacer® COMPOSITE is the lightest pole on the market with increased tensile strength and superior energy return. The patent-pending design blends T2-Fiber™, S-Glass, and carbon fiber to create a robust and durable composite construction. The Pacer COMPOSITE is designed for vaulters to raise the bar. Available 13' to 16'9" in 5lb increments. 1 Year Warranty.



### 16'1 (4.90M)

ITEM #	TEST WT	TIP
349073	160 lb	10
349075	165 lb	10
349077	170 lb	10
349080	175 lb	10
349082	180 lb	7
349084	185 lb	7
349086	190 lb	5
349088	195 lb	5
349091	200 lb	5

### 16'5 (5.01M)

ITEM #	TEST WT	TIP
350077	170 lb	10
350080	175 lb	7
350082	180 lb	7
350084	185 lb	7
350086	190 lb	5
350088	195 lb	5
350091	200 lb	4
350093	205 lb	4
350095	210 lb	4

### 16'9 (5.11M)

ITEM #	TEST WT	TIP
351084	185 lb	5
351086	190 lb	5
351088	195 lb	4
351091	200 lb	4
351093	205 lb	4
351095	210 lb	4
351097	215 lb	2

WE RAISED  
THE BAR SO  
YOU CAN TOO.

VAULTING POLES ARE NOT  
GUARANTEED AGAINST BREAKAGE

INSPECT VAULTING POLES FOR  
VISIBLE AND CONCEALED DAMAGE  
BEFORE ACCEPTING DELIVERY

#### COMPETITION POLE TIPS

Tough, durable polyurethane for  
a softer plant and long lasting performance.



700002, 700004, 700005, 700007, 700010,  
700013, 700016, 700018, and 700021

## POLE BAGS & ACCESSORIES



800801

800802

8008##CXX

### CUSTOM POLE BAG

- Customize for your school's personality!
- Holds at least five vaulting poles
- Shoulder strap for ease of transportation
- Heavy duty vinyl and leather reinforced ends for long life
- Made to fit 6" corrugated drain tube (not included)
- Use the two-digit number of your vinyl color selection (Page 10) to replace the XX in the item number

8008##CXX 10'-18' Custom Pole Bag

\*Use two-digit number of desired pole bag length to replace '##' in part number. 10'-18' lengths available.

### ESSENTIALS™ POLE BAG

- Holds at least five vaulting poles
- Heavy duty polyester for long life
- Maximum length is 15'
- Made to fit 6" corrugated drain tube (not included)

800801

### ELITE POLE BAG

- Holds at least five vaulting poles
- Heavy duty vinyl and leather reinforced ends for long life
- Adjustable from 14' 6" to 17' 6"
- Made to fit 6" corrugated drain tube (not included)

800802



### VAULT TRAINER SYSTEM

- Unique device for beginner and intermediate vaulters
- Allows athlete to acclimate the body to positions occurring during peak vault height
- Strengthens muscle groups for effective push off
- Helps to coordinate grip and pole positions while rotating around pole for push off

TA190



### PACER® GIZMO

- Practice vaulting while safely on the ground
- Allows athlete to mimic complex movements that occur in the air while firmly on your feet
- Three cord system to accommodate your specific level of strength and coordination
- Vault specific training device designed to take you to the next level

700231 Small Grip

700232 Large Grip



### PERFECT PLANT SLIDING VAULT BOX

- Sliding vault box allows vaulters to perfect the run, plant, and take-off
- Pole carriage, run mechanics, tempo, and step placement are more effectively learned using this training tool
- Tip proof design has a built in handle, a zero mark molded into the side for placement accuracy
- Constructed of a high-impact thermoplastic

2531







**CHALK STAND**

- Store chalk during practice and competition
- Lightweight stand features a wide opening for hands, a pocket for extra chalk, and rungs for hanging accessories or resting vaulting poles

**WE305** Chalk Stand

**700250** 1 lb Sports Chalk



**PORTABLE POLE RACK**

- Convenient way to store and protect your poles during meets and practice
- Free standing pole rack made of heavy duty steel with durable powder coat finish

**725**



**INTERNATIONAL POLE CART**

- Built to hold all the vaulting poles you own
- Made of sturdy steel with high end design
- Dual purposed wheels switch from swivel to locked position in a snap

**733180** Cart

**735** Tow Bar Kit



**REPLACEMENT POLE VAULT WEIGHT LABEL**

When ordering online you will receive an email requesting further information to complete this order



**WT LABEL**



**GRRRIP PLUS LOTION**

- Scientifically formulated mixture developed to enhance hand-grip up to 75% better
- Fluid mixes with natural skin oils to create a moisture barrier yet still allows the skin to breathe
- More convenient and cleaner than chalk

**700253**



**POLE VAULT GRIP TAPE**

- 12 1/2 yard roll of colored adhesive tape
- 1 1/2" width

**700259** White (15 yds)

**700260** Red

**700261** Maroon

**700262** Gold

**700263** Green

**700264** Royal

**700265** Purple

**700266** Black

**700267** Pink



**GRAPHIC POLE VAULT GRIP TAPE**

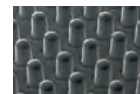
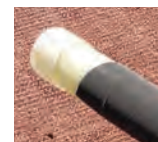
- 20 yard roll of adhesive design tape
- Camo/flag designs come in 2" width
- Jolly Roger design comes in 1" width

**700273** USA Flag

**700271** Pink Camo

**700272** Winter Camo

**700274** Jolly Roger



Microscopic detail of grip technology.

**NINJA ELITE POLE VAULT GRIP TAPE**

- Lab-designed with thousands of gripping 'fingers'
- Grip lighter and hold tighter
- No additional substances needed (chalk, sticky spray, etc)
- Slip resistant, vibration dampening and easy release properties
- Water and oil resistant

**700281** 9' x 1"

RECORDS  
ARE MADE  
TO BE  
BROKEN

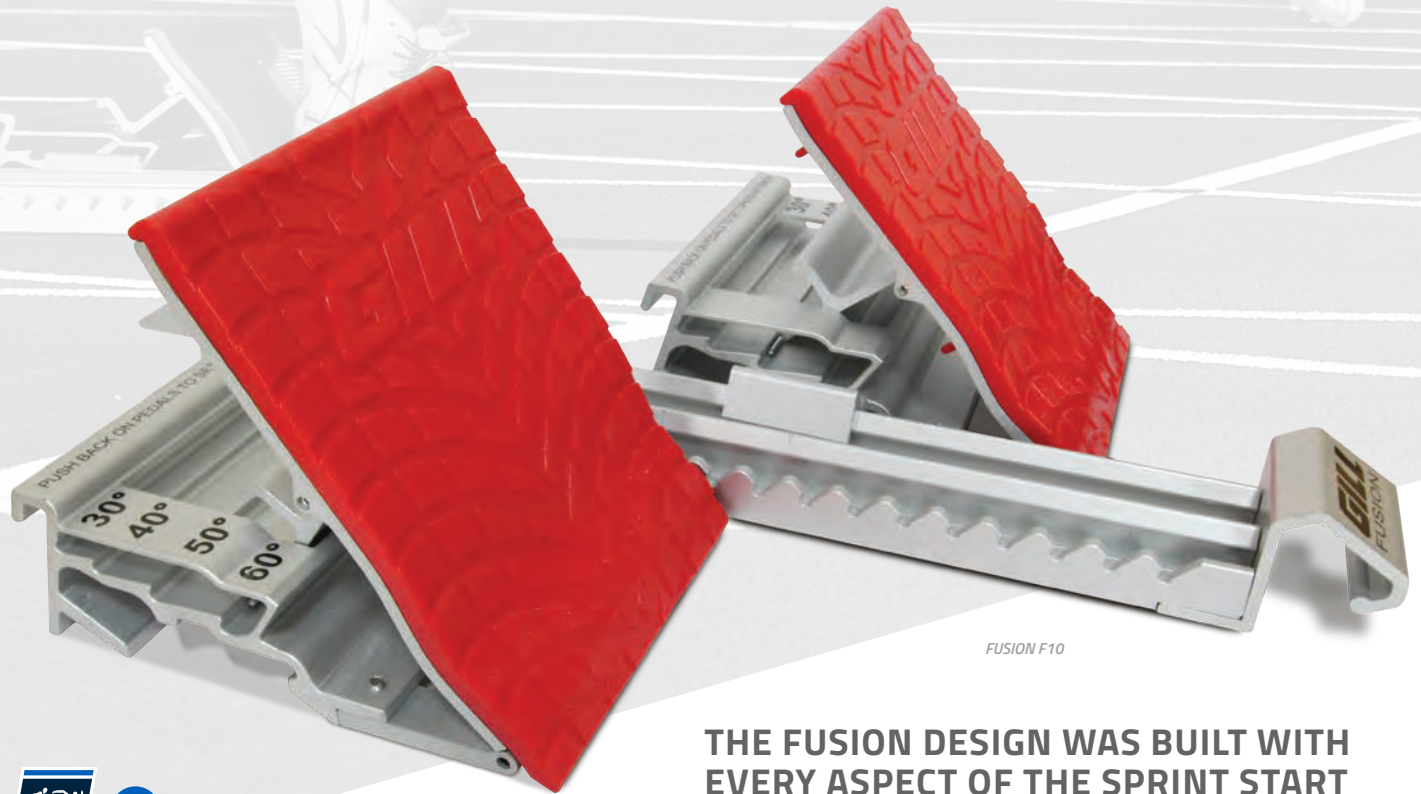




**SPRINTS &  
HURDLES**

# FUSION™

FASTER STARTS THROUGH  
ADVANCED TECHNOLOGY



FUSION F10

THE FUSION DESIGN WAS BUILT WITH EVERY ASPECT OF THE SPRINT START IN MIND, AND THE RESULT IS THE BEST STARTING BLOCK IN EXISTENCE.



OFFICIAL EQUIPMENT SUPPLIER TO THE  
NCAA TRACK & FIELD CHAMPIONSHIPS



## FUSION™ F10 STARTING BLOCK

- Exclusive 8" x 10" pedal allows full heel support for the best starts
- Precise and consistent foot placement is ensured using integrated pedal markings
- Angled spikes in base of pedals guarantee no slipping
- Built in handle allows for easy carriage between locations
- Pedals adjustable to 30°, 40°, 50°, 60°
- Meets NFHS, NCAA and World Athletics specifications, World Athletics certified

730183C02 Royal Blue



730183C03 Red



730183C05 Orange



730183C12 Black



730183C15 Dark Green



Adjust Fusion pedals to four different angles to fit your starting style.



Handle provides easy transport.



**FUSION F4, F8, & F10**  
PAT. NO. 6,929,585 & 7,156,775

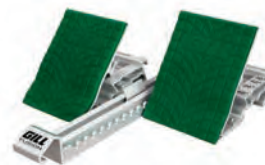
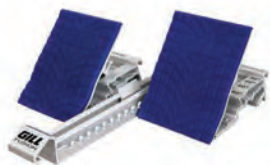


FUSION F4

FUSION F10

FUSION F8

**MORE FUSION COLOR OPTIONS**



**FUSION™ F8 STARTING BLOCK**



- Exclusive 8" x 8" pedals designed for a more aggressive acceleration pattern
- Meets NFHS, NCAA and World Athletics specifications, World Athletics certified

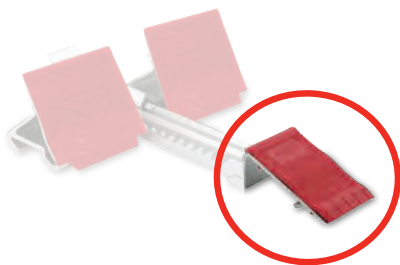
730182C02	Royal Blue	
730182C03	Red	
730182C05	Orange	
730182C12	Black	
730182C15	Dark Green	

**FUSION™ F4 STARTING BLOCK**



- Standard 4" x 8" pedals
- Meets NFHS, NCAA and World Athletics specifications, World Athletics certified

730181C02	Royal Blue	
730181C03	Red	
730181C05	Orange	
730181C12	Black	
730181C15	Dark Green	



**MOYE™ PEDAL ADAPTER**

Converts any Fusion block into a Moye style block

730168

## STARTING BLOCKS



### G2 STARTING BLOCK

- Aircraft aluminum construction for maximal lifespan
- Pedals adjust to 45°, 55°, 65°, 75°
- Ruled decal in rail allows quick, easy, repeatable pedal set-up
- Includes ½" pyramid spikes for synthetic tracks
- Meets World Athletics, NCAA and NFHS specifications

410C02 *Royal Blue*

410C03 *Red*

410C12 *Black*

### PAD COLORS



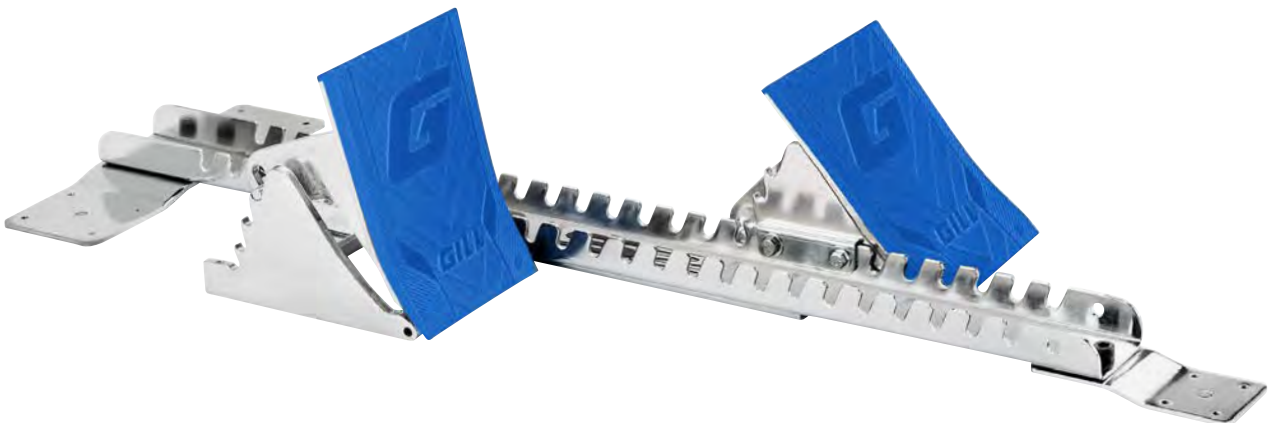
### S2 STARTING BLOCK

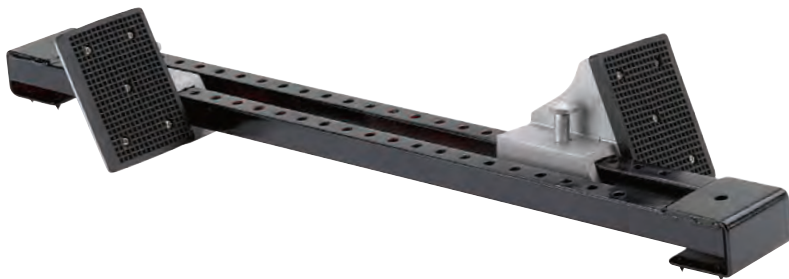
- Polished steel rail with cast aluminum pedals
- Pedals adjust to 45°, 55°, 65°, 75°
- Ruled decal in rail allows quick, easy, repeatable pedal set-up
- Includes ½" pyramid spikes for synthetic tracks
- Meets NCAA and NFHS specifications

412C02 *Royal Blue*

412C03 *Red*

412C12 *Black*





**ESSENTIALS™ STARTING BLOCK**

- One piece, all steel construction with durable black powder coat finish
- Standard width pedals with rubber pads
- Change pedal positions with simple Spring Lock Adjustment
- Features built in spikes to eliminate slipping
- *Meets NFHS specifications*

416

VP416

INCLUDED: (1) Essentials Block Cart, (8) Essentials Starting Blocks



**INDOOR STARTING BLOCK**

- No nails, pins or holes needed to hold in place
- Foot pressure on the flaps provide a non-slip start

417



**GILL® INTERNATIONAL STARTING BLOCK CART**

- Holds up to 10 starting blocks horizontally
- Handle is included for easy transport
- Includes a storage shelf for loose pedals and accessories
- Steel construction with durable, architectural gray powder coat finish

733190



**ESSENTIALS™ BLOCK CART**

- Holds up to 10 starting blocks
- Steel construction with durable black powder coat finish

923



**GILL® TRANSPORTER STARTING BLOCK CART**

- Holds up to 16 starting blocks; any style
- Large wheels make transportation easy
- Steel construction with durable black powder coat finish

9311

# HURDLES

# CONTINUUM™

THE WORLD'S FASTEST HURDLE IS ALSO THE WORLD'S SAFEST

## CONTINUUM™ AUTOMATIC HURDLES

The Continuum™ hurdle is designed to be the safest, fastest, and most unobtrusive hurdle that the rules will allow, all accomplished by placing the gateboard directly over the pivot point (tip-over-fulcrum).

- Internal leg weight from Continuum looping mechanism creates the most reliable, hassle-free automatic hurdle
- Robust C4 & C5 hurdle frames feature reinforced gusseted elbows for unparalleled strength
- Exclusive extrusion gatetubes allow for graphic customization C4 & C5 hurdles.
- C4 & C5 hurdles utilize a unique inner leg vertical height indicator for no-mistake height settings (30", 33", 36", 39", 42")
- Internalized weight mechanism of C4 & C5 hurdles creates whole-unit hurdle reducing maintenance and upkeep
- *Meets NFHS, NCAA and World Athletics specifications*
- *5 year warranty*



Automatic Hurdle U.S. Patents #9,486,714 | #9,427,677



On all Gill Hurdles\*  
Call for Details.

\*Excludes Essentials



NEW!

## CONTINUUM™ C3 AUTOMATIC HURDLE

408CXX 41"

40847CXX 47"



OFFICIAL EQUIPMENT SUPPLIER TO THE  
NCAA TRACK & FIELD CHAMPIONSHIPS

## CONTINUUM™ C4 AUTOMATIC HURDLE

1041CXX 41"

1047CXX 47"

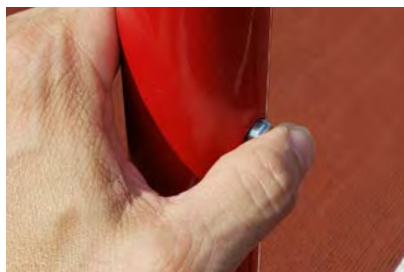
NEW!

PATENT PENDING

## CONTINUUM™ C5 AUTOMATIC HURDLE

1241CXX 41"

1247CXX 47"



C3 Hurdle thumb buttons allow for quick click setting and smooth hurdle height adjustments.



Patented C4 Hurdle dual hand trigger mechanism creates zero-click continuous transitions between any height.



Patent pending C5 Hurdle Quick-Step™ foot pedal allows for smooth continuous transitions between any height.





## CUSTOM GATETUBES

Available on Continuum C4/C5 hurdles.

## CUSTOM COLORS

Gate tubes available in a variety of bright and durable powder coat colors at no extra cost.



Color Rendering Feature at [GillAthletics.com](http://GillAthletics.com)

\*Replace XX in the item number with the two-digit number of your color selection.

## HURDLES



### CUSTOM GATEBOARDS

#### ULTIMATE CUSTOM GATEBOARD PRINTING

Customize your hurdle boards with four color printing and show off your hurdles!

946 59 or Less Hurdles  
60 or More Hurdles



#### STANDARD CUSTOM GATEBOARD PRINTING

Customize your hurdle boards with standard gateboard printing. Uppercase letters printed in single color.

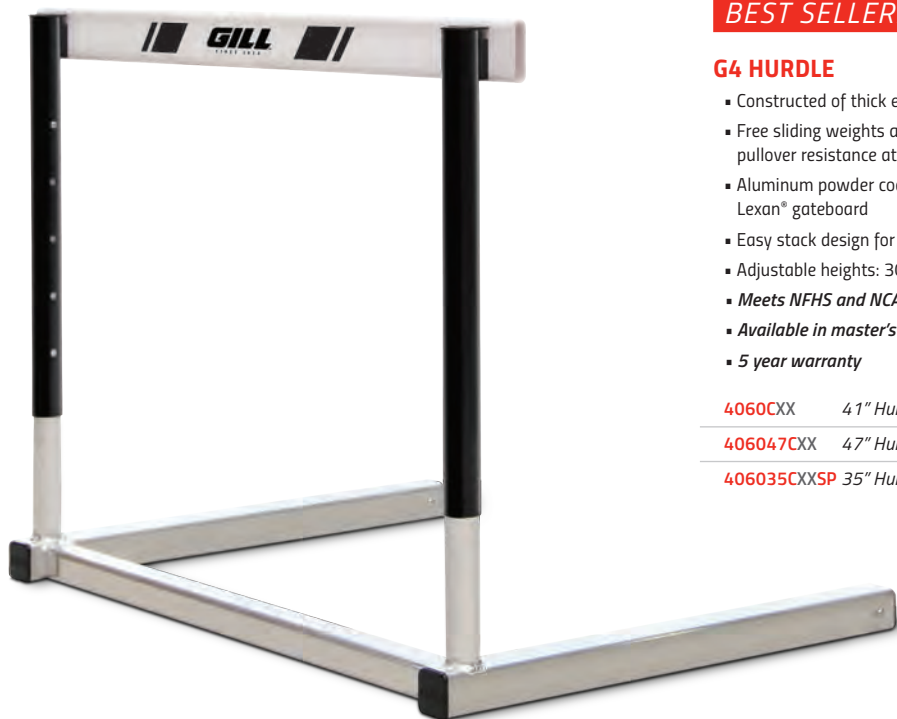
945 59 or Less Hurdles  
60 or More Hurdles



### REPLACEMENT BOARDS & PARTS



visit us online: [GillAthletics.com](http://GillAthletics.com)



**BEST SELLER!**

**G4 HURDLE**

- Constructed of thick extruded aircraft aluminum
- Free sliding weights adjust quickly to official pullover resistance at all heights
- Aluminum powder coated gatetubes and Lexan® gateboard
- Easy stack design for better stacking and portability
- Adjustable heights: 30", 33", 36", 39", 42"
- *Meets NFHS and NCAA specifications*
- *Available in master's competition hurdle sizes*
- *5 year warranty*

4060CXX 41" Hurdle

406047CXX 47" Hurdle

406035CXXSP 35" Hurdle

**CUSTOMIZABLE HURDLES**

*Gatetubes available in a variety of bright and durable powder coat colors at no extra cost.*



*\*Replace XX in the item number with the two-digit number of your color selection.*

*Color Rendering Feature at GillAthletics.com*



**G6 HURDLE**

- Constructed of thick extruded aircraft aluminum
- Manual weight adjustment to meet precise official pullover force at each height
- Aluminum powder coated gatetubes and Lexan® gateboard
- Easy stack design for better stacking and portability
- Adjustable heights: 30", 33", 36", 39", 42"
- *Meets NFHS, NCAA and World Athletics specifications, World Athletics certified*
- *5 year warranty*

406CXX 41" Hurdle

40647CXX 47" Hurdle

40635CXXSP 35" Hurdle



## HURDLES



### CUSTOMIZABLE HURDLES

See color charts on page 39 to replace the XX in the item numbers.



**PRO TIP:** Hurdles are packaged in two per box. Order in even numbers to improve shipping.

#### GILL ESSENTIALS™ HURDLE

- All aluminum construction
- Economical hurdle that meets official pullover resistance at all heights
- Rigid double-crossbar design ensures superior durability
- Lexan gateboard
- Adjustable heights: 27", 30", 33", 36", 39", 42"
- Meets NFHS specifications
- 1 year warranty
- Assembly required

401CXX 41" Hurdle

#### S1 HURDLE

- Strong all aluminum design
- Unmatched value for high school programs
- Aluminum powder coated gatetubes and Lexan® gateboard
- Adjustable heights: 30", 33", 36", 39", 42"
- Meets NFHS specifications
- 5 year warranty
- Assembly required

411CXX 41" Hurdle

#### S2 HURDLE

- Powder coated steel U-shaped single cross support design
- Single cross support allows for easy carriage and unhindered plyometric drills
- Aluminum powder coated gatetubes and Lexan® gateboard
- Adjustable heights: 30", 33", 36", 39", 42"
- Meets NFHS specifications
- 5 year warranty
- Assembly required

403CXX 41" Hurdle

40335CXX 35" Hurdle

#### HURDLE CART

- Unique walk-in design
- Steel construction with durable black powder coat finish
- Large swivel casters for easy transportation
- Compatible with both rocker and 'L' shaped hurdles

4010 41" Hurdle Cart (Holds 8-10)

4020 41" Hurdle Cart (Holds 18-20)

4036 35" Hurdle Cart (Holds 8-10)



4010



4020

#### HURDLE PORTER

- Easy convenient way to move 8-10 hurdles
- Steel construction with durable black powder coat finish
- Compatible with 'L' shaped hurdles only

4210 41" Hurdle Porter



#### FOAM HURDLE BOARD GUARD

- Easily attaches to hurdle for maximum protection against injury

403BG Guard

403BG10 Guards (10)

**BEST SELLER!**

**S4 HURDLE**

- Best selling high school hurdle for elite programs
- Aluminum square tube construction
- Welded cross support design provides unrivalled durability
- Aluminum powder coated gatetubes and Lexan® gateboard
- Gatetubes allow for GRAPHIC customization
- Adjustable heights: 30", 33", 36", 39", 42"
- *Meets NFHS specifications*
- *5 year warranty*
- *Ships assembled*

402CXX 41" S4 Hurdle

402TCXXSP 41" Hurdle with Gatetube Graphics



402TC02SP

**CUSTOMIZABLE  
GATETUBES**



*Easy stack design for better storage and portability*

**CUSTOMIZABLE  
HURDLES**

*Gatetubes available in a variety of bright and durable powder coat colors at no extra cost.*



**Color Rendering Feature  
at GillAthletics.com**

*\*Replace XX in the item number with the two-digit number of your color selection.*

**GILL® FLIGHT HURDLE CART**

- World's most convenient and efficient hurdle cart
- Four wheel design provides superior moveability compared to corner cutting three wheel designed carts
- Sturdy steel construction with durable black powder coat finish
- Efficiently supports up to 10 hurdles at a time

4630 41" Hurdle Cart

4631 47" Hurdle Cart



**HURDLE CART WEATHER COVER**

733630CXX 41" Cart Weather Cover

733631CXX 47" Cart Weather Cover

733630CXXSP 41" Cart Weather Cover with Graphics

733631CXXSP 47" Cart Weather Cover with Graphics

**CUSTOMIZABLE  
COVER**



*\*Replace XX in the item number with the two-digit number of your vinyl color selection.*

NEVER  
GIVEN  
ALWAYS  
EARNED





**MEETS**

## ELECTRONICS & INDICATORS



OFFICIAL EQUIPMENT SUPPLIER TO THE  
NCAA TRACK & FIELD CHAMPIONSHIPS

### TIMER AND DISPLAY

- Lightweight with rugged rubber bumpers for increased durability
- Countdown timer has various pre-programmed times
- Three brightness intervals adjust to your specific needs
- Also used as an elapsed time clock for CC, road races, and the track
- Countdown can be set for durations up to 99 minutes
- Anti-glare 6" x 3" digits
- Includes tripod, 120V adapter plug, and 12V internal battery
- External battery can be connected if needed
- Connect to Gill Ultrasonic Wind Gauge to display wind reading continuously or at 10 second intervals

**E49821** Single Sided

**E49822** Double Sided

**E39820B** Optional External Battery



### ULTRASONIC WIND GAUGE 2.0

- Highly visible backlit display improved for officials accuracy
- Special cable from Lynx required for Lynx interface
- Includes tripod, AC adapter, and padded protective case
- World Athletics: ultrasonic wind gauges shall be used at all International Competitions (Rule 1.1 (a) through (h))

**E49810**



### COMPACT WIND GAUGE KIT

- Displays Wind Reading in Meters Per Second
- Accuracy: +/- 0.010 m/s
- Meets NFHS, NCAA, and World Athletics specifications
- Includes tripod and carry case

**E39815**







E49872



728

### 2 DIGIT ELECTRONIC DISPLAY

- Use as a PV standard indicator, wind reading indicator unit, or lap counter.
- 6" digits with 3 stage dimming feature
- Quality carry/storage case included
- Lap Counter Display Stand sold separately

E49872 2 Digit Electronic Display

728 Lap Counter Display Stand



79200



79300



79400



79100

### PERFORMANCE INDICATORS

- 9" numerals
- Rotates 360° for visibility
- Aluminum construction with steel roll away base
- Powder coated black

79300 2 Digit Lap Counter with Bell

79400 2 Digit Pole Vault Display

79100 4 Digit Scholastic Performance Indicator

79200 5 Digit National Performance Indicator



LYNX COMPATIBLE  
EAGLE EYE COMPATIBLE

### LED SCROLLING DISPLAY

- Displays event standings, upcoming races and more
- Update information easily with provided software
- Software is designed to run in background when using Lynx, scrolls track event times/places as Lynx System files results
- Sixteen 4" tall characters maximum displayed at one time
- Power options: 120V power cord (included) or 12V battery (sold separately)
- Carrying case included

E39860 Scrolling Display

E39820B 12V Battery



LYNX COMPATIBLE  
EAGLE EYE COMPATIBLE

### GILL 9" DIGIT RACE CLOCKS

- Six digit race clocks in 9" tall digits
- Count-up/count-down capability in seconds or hundredths of seconds
- Features end-mounted controls for direct operation
- Power options: 120V AC (included) or external 12V battery (sold separately)
- Optional carrying case available (sold separately)
- Tripod and remote control included

E39851 Race Clock

E39853 Double-Sided Race Clock

E39858 Carrying Case

E39820B 12V Battery

## MEASURING DEVICES



### FIBERGLASS MEASURING TAPES

- Durable vinyl-coated fiberglass tape
- More flexible than cloth tapes and won't kink or break when twisted or stepped on
- Measures in both English and Metric units
- *C = closed reel; O = open reel*

984 50' (15m) C

985 100' (30m) O

987 165' (50m) O

986 200' (60m) O

988 300' (90m) O

989 330' (100m) O



### STEEL MEASURING TAPES

- Coated with durable epoxy finish
- *C = closed reel; O = open reel*

980 50' (15m) C

981 100' (30m) C

971 330' (100m) O

### MEASURING TAPE KIT

For all your measuring needs, includes:

- 988 300' (90m) (1)
- 985 100' (30m) (2)
- 984 50' (15m) (1)

982 Measuring Tape Kit



### TAPE STAKES

- Handy tool attaches to end of measuring tape for convenient use
- Used for all throwing and horizontal jumping events
- *Set of 4*

970



*After aligning the targeting laser with the landing, simply push a button on and read the measurement.*

### HORIZONTAL JUMPS LASER MEASURING DEVICE

- Provides accurate measurements for both Long Jump and Triple Jump
- Leica Measuring Device reads both English and Metric units
- Constructed with a 6 meter aluminum rail and weighted steel bases

E73740



### LASER DISTANCE MEASURING SYSTEM

- Accurate laser measuring device for throwing events
- Center the mounted laser after each attempt and aim at the target
- Accurate readings to the nearest 1/8"
- *Fully compliant with NFHS, NCAA and World Athletics specifications*

E737

# EVERYTHING YOU NEED IN ONE SIMPLE PACKAGE

## ETHERLYNX VISION™ CAMERA PACKAGES BY LYNX

- **All packages contain everything you need.** Each package is a complete photofinish and timing solution for your track meets. All you add are the athletes and a computer!
- **All systems can run on any Windows computer** equipped with an Ethernet connection
- **All systems include the new FinishLynx EASYALIGN™ technology** that shows a full-frame video view of the finish line for fast and accurate camera placement
- **All systems take full color pictures** for easier athlete identification
- **All systems use power-over-Ethernet**, so no dedicated AC power is required at the camera location. A single Ethernet cable transfers all data AND provides camera power
- **All packages include LYNXPAD Meet Management software** - this integrates with multiple online meet entry websites, including Athletics.net



LYNX COMPATIBLE PRODUCTS	
LED Scrolling Display	Page 47
Race Clock	Page 47
HALO	Page 50

### THE SCHOLASTIC SOLUTION

- (1) 5L510 EtherLynx™ Camera
- 600 Standard Frame Rate
- 2.8-10mm Manual Zoom Lens

**INCLUDES:**  
All camera connection and power cables  
Custom FinishLynx Carrying Case  
Tech Support & 1-year renewable warranty  
Camera Tripod and mounting hardware  
FinishLynx Lite software with support for RadioLynx Wireless Start (E39916)

**E39905**

### THE BRONZE SOLUTION

- (1) 5L500 Vision EtherLynx™ Camera
- 1000 Standard Frame Rate
- 8-48mm Manual Zoom lens

**INCLUDES EVERYTHING FROM THE SCHOLASTIC SOLUTION, PLUS:**  
Full FinishLynx32 software with support for RadioLynx Wireless Start (E39916), Lynx Software Plug-in(s)  
Multiple FinishLynx Cameras, IdentLynx 2-D video camera, scoreboard interface for display of running time & results, and wind gauge interface for automatic wind reading data import

**E39906**

### THE SILVER SOLUTION

- (1) 5L500 Vision EtherLynx™ Camera
- 2000 Standard Frame Rate
- Motorized Zoom lens

**INCLUDES EVERYTHING FROM THE BRONZE SOLUTION, PLUS:**  
Automatic capture & virtual photocell plug-in  
High resolution (2000 fps) images  
Remote positioner (remote camera adjustment)  
Motorized lens (remote lens adjustment)

**E39903**

### BEST SELLER!

### THE GOLD SOLUTION

- (1) 5L500 Vision EtherLynx™ Camera
- 2000 Standard Frame Rate
- Motorized Zoom lens

**INCLUDES EVERYTHING FROM THE SILVER SOLUTION, PLUS:**  
RadioLynx Wireless Start System  
Power over Ethernet network switch  
IdentLynx full frame video camera  
9-digit alphanumeric scoreboard

**E39901**

### THE PLATINUM SOLUTION

- (2) 5L500 Vision EtherLynx™ Cameras
- 2000 Standard Frame Rate
- Motorized Zoom lens

**INCLUDES EVERYTHING FROM THE GOLD SOLUTION, WITH UPGRADED DISPLAY, PLUS:**  
A second 2000 fps 5L500 Vision EtherLynx™ camera (reverse angle/alternate finish line)  
Internal RadioLynx Receiver  
Video display Module (VDM)  
Portable LED Display

**E39921**

### THE DIAMOND SOLUTION

- (2) 5L500 Vision EtherLynx™ Cameras
- 2000 Standard Frame Rate
- Motorized Zoom lens

**INCLUDES EVERYTHING FROM THE PLATINUM SOLUTION WITH UPGRADED DISPLAY, PLUS:**  
LuxBoost Low-Light Capture  
Internal Camera Battery  
ResuITV software License  
Network COM Port Plug-in  
SeriaLynx with External Battery Pack  
Weather-Proof Wind Gauge  
Infield Video Display

**E39922**

\* FinishLynx Systems are licensed and cannot be returned.

## GILL HALO



### HALO ELECTRONIC STARTER DEVICE

Introducing the next generation of starting devices—the patent pending Gill Athletics® HALO Electronic Starter Device! Unlike traditional starting pistols that require costly blanks, the HALO® is an electronic system that can connect wirelessly to the Wireless Speaker System and produce both the traditional bang sound as well as an audible tone. Connect to the Multiple Speaker System to disperse sound above the decibel standard equally across the starting line. *Compatible with FinishLynx and Eagle Eye*

E49710



### ALFA COMPETITION STARTING PISTOLS

- Zinc-aluminum frame finished in rust resistant nickel
- High strength heat-treated steel parts promise trouble free usage
- Bright orange grips and barrel cap eliminate confusion with a firearm
- Rugged and reliable with swing out 6-round cylinder for easy load and unload
- **Limited Lifetime warranty**

425 .22 Cal. Pistol

426 .32 Cal. Pistol



### GILL® COMPETITION STARTING PISTOLS

- Inexpensive yet durable starting pistols
- Feature free spinning cylinder necessitating to cock the hammer before firing
- Holds 8 rounds

42510 .22 Cal.

42610 .32 Cal. (holds 5 rds.)

### STARTING BLANKS

42701 .22 Cal. Crimped (100 rds.)

429 .32 Cal. Gator Blanks (50 rds.)

435 .22 Cal Gator Blanks (100)

42801 .32 Cal. Crimped (100 rds.)

39603 Pyro Bright Shells (50 rds.)

### OFFICIALS' FLAGS

- Highly visible heavy duty nylon flag with plastic handle
- Flags measure 14" x 13"

730270 Red/White

730271 Yellow/White



### STARTERS SLEEVE

Highly visible from any part of the track. Bright orange with elastic at both ends for a sure fit.

423



### 45W MEGAPHONE

45W Megaphone with range of up to 800 meters. Requires 10 "D" batteries (17 hours of use. Not included).

731



Back Panel

**WIRELESS SPEAKER SYSTEM**

The Wireless Starter System is the perfect companion to the HALO® Starting Device. Multiple Speaker System disperses sound above the decibel standard equally across the starting line.

E49720



Includes: Wide-base Tripod, Protective Carrying Case, Rain Cover, 12V Battery & Charging Cable.

TIMEKEEPING  
FOR ANY SIZE EVENT

**ULTRAK L10 MULTI-LANE TIMER**

- Compatible with Hytek Meet Management Software
- Times races with up to 10 lanes
- Times road races with up to 8,000 participants
- Prints bib number, lane, place, and time
- Includes linkgate, eliminating tangled cords to L10
- Includes Windows interface and 2 rolls of paper
- **2 year warranty**



37932 8-Lane Timer

37934 Extra Button

37935 Paper Refills (3)

**SEIKO S149 STOPWATCH WITH PRINTER**

- 300 dual split memory
- Saves multiple events into memory
- Large-sized 3 line display
- Auto start function
- Prints 13 digits per line at 1.5 per second
- Battery life indicator
- Includes 2 rolls of paper
- **3 year warranty**



37801 Stopwatch and Printer

37805 Paper Refills (5)



**ROBIC SC-505W**

- Twelve (12) memory recall
- Lap, split or single event timing
- 1/100 second resolution to 24 hours
- **1 year full factory warranty**

37603 Single

37604 Set of Six



**ULTRAK 310**

- Functions: start, stop, reset
- Measures 10 hours
- **3 year warranty**

33106 Set of Six



**BEST SELLER!**

**ULTRAK 495**

- 100 dual split recallable memory
- Measures up to 10 hours
- Continuous display of event time
- Allow for split in recall mode
- Water resistant
- **5 year warranty**

37904 Black

37904Y Yellow

## TRACK ACCESSORIES



### CONE MARKERS

- Durable, flexible PVC

F451	2"	999	12"
975	4"	976	18"
TA9756	6"		



730310



### GILL® LANE MARKERS

- Lightweight markers are easy to stack and carry
- Stable 3-sided design provides great visibility
- 28" tall with convenient hand hole for quick set up
- Custom graphics available

73090	Lanes 1-8
73090SP	Lanes 1-8, Custom
730909	Lane 9 Only
730909SP	Lane 9 Only, Custom
730910	Lane 10 Only
730910SP	Lane 10 Only, Custom

### LJ & TJ TAKE OFF BOARD MARKERS

- Guides athletes to the horizontal jumps take-off board
- Made of safe collapsible plastic material

730310



### HORIZONTAL DISTANCE INDICATOR BOARDS

- Visual gauge of jump distance
- Made of safe collapsible plastic material
- Lightweight for easy transportation and storage
- Custom graphics available for additional charge

730721	LJ Boards English (16'-30')
730722	LJ Boards Metric (5m-9m)
730741	TJ Boards English (38'-55')
730742	TJ Boards Metric (12m-17m)

### BATONS

Individual		Set of 8	
43101	Gold	431018	Gold
43102	Orange	431028	Orange
43104	Silver	431048	Silver
43105	Red	431058	Red
43106	Purple	431068	Purple
43107	Green	431078	Green
43108	Blue	431088	Blue
43109	Black	431098	Black
		430	Assorted



### GILL® DISTANCE MARKERS

- Lightweight durable plastic material
- Stable 3-sided design provides 360 degree visibility
- 18" tall letters
- Custom graphics available\*

#### Individual Markers

#### Individual Markers with Graphics\*

730912	12m/39'	730930	30m/98'
730914	14m/46'	730940	40m/131'
730916	16m/52'	730950	50m/164'
730918	18m/59'	730960	60m/197'
730920	20m/66'	730970	70m/230'
730922	22m/72'	730980	80m/262'
730924	24m/79'	730990	90m/295'

\*Add "SP" to end of part number. Example: 730912SP



### SCHOLASTIC DISTANCE MARKERS

- Ultra light expanded vinyl material
- 13" x 16" with quick stack & light carry characteristics
- 11" letter height

941 Set of 13

#### Individual Markers

941030	30'	941100	100'
941035	35'	941120	120'
941040	40'	941140	140'
941045	45'	941160	160'
941050	50'	941180	180'
941055	55'	941200	200'
941060	60'		



**TEAR TAG NUMBERS**

- Made of Tyvek® material for unsurpassed durability
- 7 ½" x 7 ½" numbers feature a 3 ½" numeral and 2" detachable tag
- **Sets of 100**

92300	#001-100
92301	#101-200
92302	#201-300
92303	#301-400
92304	#401-500



**CUSTOMIZED COMPETITOR'S NUMBERS**

- Feature your school name and/or event
- Made of Tyvek material for unsurpassed durability
- **Sets of 100**

730400	5 ½" x 7 ½"
730410	7 ½" x 7 ½" * * with Detachable Tag



**CUSTOMIZE IT!**  
Add SP to item number.

**INDIVIDUAL HIP NUMBERS**

\* Add SP to item number for customized Hip numbers

Roll of 100	\$14	Customized Roll of 100	\$23
92101	#1	92107	#7
92102	#2	92108	#8
92103	#3	92109	#9
92104	#4	92110	#10
92105	#5	92111	#11
92106	#6	92112	#12
		92113	#13
		92114	#14
		92115	#15
		92116	#16
		92117	#17
		92118	#18

**HIP NUMBERS**

- Necessary for photo finish timing
- 3 ½" digit on a 4" x 1"
- No-residue adhesive labels

921	Hip Numbers 1-9 (25 of each)
922	Hip Numbers 1-18 (25 of each)

**COMPETITOR'S NUMBERS**

- Made of 100 lb 'Tuff Tear' paper tag stock
- 5 ½" x 8 ½"
- **Sets of 100**

**Competitor's Numbers**

900	#001-100	903	#301-400
901	#101-200	904	#401-500
902	#201-300	909	#901-1000



**SAFETY PINS**

910	144 ct.
91010	1440 ct.



**SPIKE KIT**

Storage case and 1500 spikes

- 4 x 842 spikes
- 3 x 840 spikes
- 2 x 83602 spikes
- 2 x 83601 spikes
- 2 x 843 spikes
- 2 x 838 spikes
- 1 x 846 t-handle wrench

850



**STEELEX SPIKES**

- Case hardened steel with blue coat provides extreme durability and extended life
- Hex-base for easier installation and removal
- Bags of 100

83500	¼" Spike Wrench
83511	Spikes: ⅛"
83512	Spikes: ⅜"
83513	Spikes: ½"
83514	Spikes: ¾"



**PYRAMID    NEEDLE    BLANK**

**SPIKES**

Bags of 100, unless otherwise noted

842	Pyramid: ¼"
8401	Needle: ⅛"
83601	Needle: ⅜"
838	Needle: ¼"
839	Needle: ⅜"
840	Pyramid: ⅛"
83602	Pyramid: ⅜"
841	Pyramid: ½"
843	Pyramid: ⅜"
844	Pyramid: ⅝"
848	Blanks
837	Javelin: 1" (20 ct.)



846



845

**SPIKE WRENCHES**

845	3-Way
846	T-Handle

## TRACK ACCESSORIES

### VICTORY PODIUM (8 PIECE SET)

- Frame constructed with 2" x 2" aluminum tubing, powder coated flat black.
- 8 individual stands allow for quick storage
- Each stand has a 39" x 39" polyboard grip floor
- Podium face is wrapped with a 19oz vinyl for cascading customization across the front of all 8 stands

990CXXSP



### VICTORY PODIUM CART

- Steel construction with durable powder coat
- 8" never-flat rubber casters for easy movement over rough terrain
- Holds all 8 Victory Podium stands

991



E39917



### INTERNATIONAL FINISH POSTS

- Heavy duty steel with folded square square bases
- Wheeled bases for easy mobility
- Big, bold letters for clear visibility

721

### FINISH LINE TAPE

- Lightweight and easy to break
- 50 yd roll

974



### STARTER'S ROSTRUM

- Provides starting official with enough height to view all lanes
- Stable design for safety

860



E39918

### CAMERA MOUNT POLE

- Custom Height Settings
- Durable powder coat finish

E39917 *Portable*

E39918 *Ground Sleeve*



### TIMERS AND JUDGES STAND

- Holds 10 people seated or 20 standing
- Five rows of 48" long steps
- Rail support along back for safety
- Red enamel finish with galvanized seats, footrests and backrest
- Easy mobility provided by 8" diameter wheels on back

995



# TRACK MAINTENANCE



## SAND PIT LEVELER

- 10' long steel leveler smooths the sand in one pass
- Two 40" long wired handles
- Adjustable guides glide the leveler across the pit
- Powder coated in architectural gray
- Fits Sand Pits up to 9'8" wide

740



## 3-LANE TRACK GATE

- Discourage joggers from using three inside lanes causing premature and uneven wear
- Easy lift and rotate to allow training on inside lanes
- Locks into place
- Includes ground sleeve
- See color charts page 12

8540 3-Lane Track Gate

8540CXX 3-Lane Track Gate; color

010970XX Post Padding; Pair



## CROSSOVER ZONE®

- Lighter and easier to handle than other 'conveyor belt rubber' systems
- Protects against steel tipped cleats, shoes and equipment wheels
- Rain drains through

493667 7.5' x 30'

493668 7.5' x 40'

493663 15' x 30'

493664 15' x 40'

493651 15' x 75'

493652 15' x 100'

493653 15' x 125'



## QUICKIE SAND PIT BROOM

453



## PIT RAKE

451



## SURFACE ROLLER

452



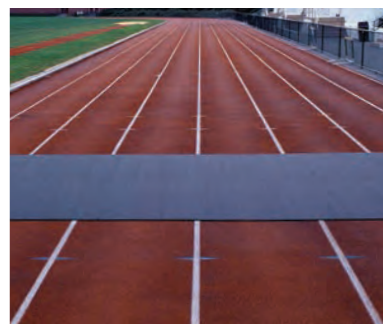
## PIT SHOVEL

450

## PIT FINISH RAKE

- Easy to use lightweight aluminum construction
- Custom made to fit each pit
- Quick release for ease of storage and movement
- Handle can be customized with school name or logo
- Rubber blade is "quarry quality" for long wear and does not allow sand to stick to it.
- Visit PitFinishRake.com for more information

550



## ROLLOUT RUNWAY

- Install quickly over worn runway or create a runway where none exists
- No bonding necessary, but can be done if required
- Custom Length (25' minimum) (no returns)

49036 10mm x 36"

49048 10mm x 48"

49136 12mm x 36"

49148 12mm x 48"

## TRACK REPAIR KITS

- Repair worn areas of track or field event area
- Includes 18.5 lb of rubber granules and 1 gallon of single-solution, no-mix polyurethane adhesive
- Approximate 11 sq ft coverage

8700 Black Repair Kit

8701 Red Repair Kit

8702 Royal Blue Repair Kit

8703 Green Repair Kit



## CROSS COUNTRY KIT

Includes: 24 chute posts, 2-110' lengths of chute rope with pennants, 9 directional flags (3 red, 3 blue, 3 yellow) and 9 flag poles.

- 960 Complete Kit
- 961 4' Chute Post
- 962 Chute Rope and Pennants (110')
- 9650 Flag Pole, Red Flag (Left Turn)
- 9660 Flag Pole, Blue Flag (Straight)
- 9670 Flag Pole, Yellow Flag (Right Turn)



## TURF CHUTE POST

- 12 lb non-invasive chute posts are ideal for turf or golf course

- 968 Turf Chute Post
- 962 Chute Rope and Pennants (110')



## CROSS COUNTRY FINISH LINE BANNER

- Heavy duty vinyl banner attaches to fiberglass uprights
- Width is adjustable from 6'-12'
- Clearance height is 7'

969



## CC PACE WHEEL

- Find your athlete's recent race/time trial in the 'Current Fitness' window and that's it!
- Pace wheel reveals aerobic base training pace, marathon race pace, lactate threshold pace, Vo2 max development intervals, and running economy repetitions

998

## SCOREBOOK

98902



## BEST SELLER!

### DISTANCE MEASURING WHEEL

- Handle collapses for easy storage
- Lightweight, durable construction
- Measures up to 10,000 feet
- English Units Only



9703

### ELECTRONIC MEASURING WHEEL

- Durable long-lasting steel frame
- Electronic 7-digit LCD readout is backlit for low light usage
- Patent-pending 'thumb-up' grip ensures less wrist strain and superior control



9701

### DUAL XC MEASURING WHEEL & COURSE MARKER

- Measure and mark simultaneously
- Lightweight tool features a trigger under the pistol grip
- Trigger activates spray paint (not included)
- English units only



9702



TENT SHOWN: 955415 Tent Canopy Premium Portable Tent with Full Color Printing

Tent graphic worksheet and vector graphics are all that is needed to show your team pride today!

## PORTABLE EVENT TENTS

- Commercial grade gray-blue steel frame
- 600 denier polyester canopy and walls are scuff resistant and waterproof finish.
- Water, UV light, and fire resistant
- Roller bag: 600 denier polyester with scuff resistant and waterproof finish
- Tent stake kit and dust coverbag included
- Sidewalls and roller bags sold separately

## COLORS



### QUICK SHIP PORTABLE TENT-WITHOUT GRAPHICS

- 10x10 size only; in-stock for Quick Ship in two canopy colors (black or white)
- Canopy available in White or Black; 600 denier polyester scuff resistant and waterproof finish.
- Commercial Grade Steel Frame with hammer tone finish.

- 955310B 10'x10' Tent (Quick-Ship) - Black Only
- 955310W 10'x10' Tent (Quick-Ship) - White Only

### PORTABLE TENT-WITHOUT GRAPHICS

- Canopy available in 10 colors. 600 denier polyester scuff resistant and waterproof finish.
- Commercial Grade Steel Frame with hammer tone finish.

- 955210 10'x10' Tent
- 955215 10'x15' Tent
- 955220 10' x 20' Tent

### PORTABLE TENT WITH ONE-COLOR IMPRINT

- Features one color custom imprint across canopy valance; 10"x100" print area
- Canopy available in 10 colors; 600 denier polyester scuff resistant and waterproof finish.
- Commercial Grade Steel Frame with hammer tone finish.

- 955310 10'x10' Tent - 1 Color Print
- 955315 10'x15' Tent - 1 Color Print
- 955320 10'x20' Tent - 1 Color Print

### PREMIUM PORTABLE TENT WITH FULL-COLOR PRINTING

- Features full color digital dye sublimated print on all locations of canopy
- Canopy available in 10 colors; 600 denier polyester scuff resistant and waterproof finish.
- Industrial Grade Steel Frame with aluminum brush finish.

- 955410 10'X10' Tent - full color print
- 955415 10'X15' Tent - full color print
- 955420 10'X20' Tent -full color print

### ACCESSORIES

- 9552SK Stake Kit
- 9552WB Weight Bags (4) (Recommended)
- 955209 XL All-Terrain Wagon w/ Thermal Imprint included

### SIDE WALL

- 955210S 10' Solid Color Side Wall
- 955215S 15' Solid Color Side Wall

### ROLLER BAG

- 955210B 10' Tent Heavy Duty Roller Carry Bag
- 955215B 15' Tent Heavy Duty Roller Carry Bag
- 955220B 20' Tent Heavy Duty Roller Carry Bag

THROW

FAR





CARBON  
87

**THROWS**

## DISCUS

### S-SERIES

Gill Athletics® new low- to mid-spin S-series feature exclusive, high-impact translucent side plates in three distinctive in-molding patterns.

- High quality steel rim
- Colorful, high-impact translucent side plates
- Meets NFHS, NCAA and World Athletics specifications



Guaranteed Legal  
Weight and Size



### HOW TO CHOOSE

#### STEP 1:

SELECT YOUR OFFICIAL  
COMPETITION WEIGHT

**1.0K** High School Girls/Women

**1.6K** High School Boys

**2.0K** College Men

#### STEP 2:

SELECT YOUR DISCUS  
% RIM WEIGHT



S  
2.0

GILL

2.0

S



S  
6

GILL

6

S

STEP 1: DISCUS WEIGHT	STEP 2: % RIM WEIGHT	BEST SELLER!			
		S6	S7	S8	
1.0K Womens	LOW-SPIN 60% RIM WT 75810		MID-SPIN 75% RIM WT 77510		MID-SPIN 80% RIM WT 77810
1.6K Boys	LOW-SPIN 61% RIM WT 76116		MID-SPIN 75% RIM WT 77516		MID-SPIN 80% RIM WT 78016
2.0K Mens	LOW-SPIN 67% RIM WT 76720		MID-SPIN 75% RIM WT 77520		MID-SPIN 80% RIM WT 78020



### INDOOR RUBBER DISCUS

- Solid one-piece rubber construction
- Won't scuff floors or walls
- Meets NFHS specifications

311 1.0K

308 1.6K

304 2.0K



### RUBBER DISCUS

- Solid one-piece construction
- Tough, durable rubber
- Meets NFHS specifications

310 1.0K

307 1.6K

302 2.0K



### RUBBER DISCUS + HANDSTRAP

- Adjustable hand strap
- For training only
- Warning: Practice in a protective cage

81310 1.0K

81316 1.6K

81320 2.0K



### VIBE LIMITED EDITION DISCUS

- Mid-spin discus
- ABS plastic side plates
- High quality steel rim
- Meets NFHS, NCAA and World Athletics specifications

VIBE10 1.0K 75%

VIBE16 1.6K 75%



OFFICIAL TRACK & FIELD EQUIPMENT SUPPLIER



Guaranteed Legal Weight and Size

## DISCUS

### G-SERIES

Gill Athletics® high-moment G-series discus with high-spin rim offers throwers precision-crafted, certified World Athletics discuses.

- High-spin steel alloy rim
- Meets NFHS, NCAA, and World Athletics specifications
- World Athletics certified



Guaranteed Legal  
Weight and Size



### HOW TO CHOOSE

#### STEP 1:

SELECT YOUR OFFICIAL  
COMPETITION WEIGHT

**1.0K** High School Girls/Women

**1.6K** High School Boys

**2.0K** College Men

#### STEP 2:

SELECT YOUR DISCUS  
% RIM WEIGHT







STEP 1: DISCUS WEIGHT	STEP 2: % RIM WEIGHT	G83	G85	CARBON 
1.0K Womens		<i>HIGH-SPIN</i> 83% RIM WT 88110 		
1.6K Boys		<i>HIGH-SPIN</i> 83% RIM WT 88316 		
2.0K Mens		<i>HIGH-SPIN</i> 83% RIM WT 88320 		



**LEGENDARY HOLLOWOOD™ DISCUS**

- Low- to mid-spin discus
- Straight grained hard rock maple side plates
- High quality steel rim
- World Athletics certified
- Meets NFHS, NCAA and World Athletics specifications

313	1.0K		65%
305	1.6K		74%
300	2.0K		75%



# THROWS

## HAMMERS



OFFICIAL EQUIPMENT SUPPLIER TO THE  
NCAA TRACK & FIELD CHAMPIONSHIPS

### ORBITER™ - TUNGSTEN

- Smaller diameter 100% tungsten-filled shell: 125mm for 20lb balls and 156mm for 35lb balls
- One-piece textured handle
- Exclusive lightweight ball-bearing swivel reduces torque and friction during rotation
- Kevlar weight bag
- Plastic injection NBR collar reduces damage potential and allows uninhibited rotation
- **1 year warranty**

4959 20 lb

4958 35 lb



**Guaranteed Legal  
Weight and Size**

### ORBITER™ - LEAD

- Plastic injection NBR collar reduces damage potential and allows uninhibited rotation
- Sewn strap bag made out of double layered seatbelt polyester material
- Textured handle is the widest the rules allow for increased throwing performance
- **1 year warranty**

4947 12 lb

4948 16 lb

4949 18 lb

4950 20 lb

4952 25 lb

4954 30 lb

4955 35 lb



### TURNED IRON HAMMERS

- Includes wire, handle and ball
- **Meets NFHS, NCAA and World Athletics specifications**

3693 3K (6.6 lb)

36935 3.5K (7.7 lb)

3694 4K (8.8 lb)

36945 4.5K (9.9 lb)

3695 5K (11 lb)

3612 12 lb

3696 6K (13.2 lb)

3614 14 lb

3616 16 lb

3618 18 lb

3620 20 lb



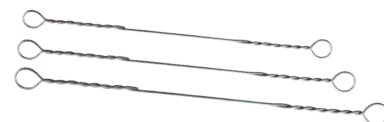
### PACER® STAINLESS STEEL HAMMERS

- Includes wire, handle and ball
- **Meets NFHS, NCAA and World Athletics specifications**
- **World Athletics Certified**

738940 4K 95mm

738120 12 lb 103mm

738160 16 lb 110mm



### HAMMER WIRES

32200 20" Wire

32300 30" Wire

32370 37" Wire

32375 37 1/2" Wire

32380 38" Wire

32385 38 1/2" Wire

32390 39" Wire

32395 39 1/2" Wire

### TRAINING THROWING WEIGHTS

- Top quality turned iron
- Strong steel handle

3920 20 lb

3925 25 lb

3935 35 lb



### PREMIUM HAMMER HANDLE (ALUMINUM GRIP)

32019 Meets World Athletics Specifications

### USA HAMMER GLOVES

- Designed to endure the toughest throwers
- Seamless outside finger designed for unobtrusive fit
- High quality genuine leather

31918 Left Small

31917 Right Small

31919 Left Medium

31922 Right Medium

31920 Left Large

31923 Right Large

31921 Left X-Large

31924 Right X-Large





## PERFECT BALANCE SHOTS

- Engineered with exacting specifications for balance
- 100% sweet spot design gives uncompromised throwing distance
- Turned iron material for maximum durability
- *Meets NFHS, NCAA and World Athletics specifications*

3894	4K	108mm
3812	12 lb	115mm
3816	16 lb	128mm

**OFFICIAL  
COMPETITION  
REFERENCE GUIDE**



## PACER® STAINLESS STEEL SHOTS

- Machine turned for precision shape and weight
- *Meets NFHS, NCAA and World Athletics specifications, World Athletics certified*

735940	4K	95mm
735941	4K	109mm
735120	12 lb	103mm
735160	16 lb	110mm
735163	16 lb	129mm

**High School Girls/Women:** 4K  
**High School Boys:** 12 lb  
**College Men:** 16 lb



## BRASS SHOTS

- Machine turned brass for unmatched design and feel
- *Meets NFHS, NCAA and World Athletics specifications*

3594	4K	95mm
3512	12 lb	103mm
3516	16 lb	110mm

## TRAINING SHOTS

- Cast iron material for maximum durability
- Uniform size of diameter allows for ideal training
- Keep the same size diameter as you train with variable weights



TS10830	3K	108mm	TS11516	16 lb	115mm
TS10835	3.5K	108mm	TS12813	13 lb	128mm
TS10845	4.5K	108mm	TS12814	14 lb	128mm
TS10850	5K	108mm	TS12815	15 lb	128mm
TS11510	10 lb	115mm	TS12817	17 lb	128mm
TS11511	11 lb	115mm	TS12818	18 lb	128mm
TS11513	13 lb	115mm	TS12820	20 lb	128mm
TS11514	14 lb	115mm			



## INDOOR SOFTSHELL SHOTS

- Polyvinyl plastic shell has softer feel for athlete preference
- Fine lead shot filled to exact weights
- *Meets NFHS, and World Athletics specifications, World Athletics certified*
- **1 year warranty**

3106	6 lb	101mm
3193	3K (6.6 lb)	101mm
3108	8 lb	115mm
3194	4K (8.8 lb)	115mm
3195	5K (11 lb)	125mm
3112	12 lb	125mm
3196	6K (13.2 lb)	139mm
3114	14 lb	139mm
3115	15 lb	139mm
3116	16 lb	139mm
3118	18 lb	145mm



## INDOOR HARDSHELL SHOTS

- Polyethylene shell will last season after season
- Fine lead shot filled to exact weights
- *Meets NFHS, NCAA and World Athletics specifications, World Athletics certified*
- **1 year warranty**

3206	6 lb	100mm
3293	3K (6.6 lb)	114mm
3208	8 lb	114mm
3294	4K (8.8 lb)	114mm
3210	10 lb	114mm
3295	5K (11 lb)	125mm
3212	12 lb	125mm
3296	6K (13.2 lb)	138mm
3214	14 lb	138mm
3215	15 lb	138mm
3216	16 lb	138mm
3218	18 lb	144mm



## CAST IRON SHOTS

- 4K and 12 lb shots guaranteed legal weight and size
- *Meets NFHS, NCAA and World Athletics specifications*

3306	6 lb
3393	3K (6.6 lb)
3308	8 lb
3394	4K (8.8 lb)
3310	10 lb
3395	5K (11 lb)
3312	12 lb
3396	6K (13.2 lb)
3314	14 lb
3315	15 lb
3316	16 lb
3318	18 lb
3320	20 lb



## TURNUED SHOTS

- Machine turned for precision shape and weight
- *Meets NFHS, NCAA and World Athletics specifications, World Athletics certified*

34941	4K	100mm
34944	4K	104mm
34943	4K	108mm
34121	12 lb	108mm
34122	12 lb	115mm
34161	16 lb	120mm
34162	16 lb	125mm
34163	16 lb	128mm

## TRAINING & ACCESSORIES

**BEST SELLER!**



### BOYS' THROWS HIGH SCHOOL

- 307 1.6K Gill Rubber Discus (1)
- 77516 1.6K Gill S7 Discus (1)
- 78016 1.6K Gill S8 Discus (1)
- 76116 1.6K Gill S6 Discus (1)
- 3312 12 lb Cast Iron Shot (1)
- 34121 12 lb, 108mm Turned Iron Shot (1)
- 931 Shot/Discus Carriers (2)

VP200

### GIRLS' THROWS HIGH SCHOOL/COLLEGE

- 310 1K Gill Rubber Discus (1)
- 77510 1K Gill S7 Discus (1)
- 77810 1K Gill S8 Discus (1)
- 75810 1K Gill S6 Discus (1)
- 3394 4K Cast Iron Shot (1)
- 34941 4K, 100mm Turned Iron Shot (1)
- 931 Shot/Discus Carriers (2)

VP100



### DISCUS CARRIER

- High quality vinyl discus carrier
- Features a plastic handle and convenient shoulder strap
- Holds 2 discuses or shot puts

931



### 2-SHOT CARRIER

- Features a plastic handle and convenient shoulder strap
- Vinyl construction with snap top closure
- Holds 2 shot puts

929



### SCHOLASTIC SHOT CARRIER

- Heavy woven polyethylene rope with plastic handle
- Holds 1 shot put

928



### TRAINING DISCUS

- Customize your training with variable weight
- Easy and quick transition from weight to weight
- Not competition legal, for training only

812 0.85K~1.20K

811 1.40K~1.80K

810 1.75K~2.20K



### DELUXE UNIVERSAL IMPLEMENT CARRIER

- Holds any of the three standard throwing implements
- Stores and protects: Shot Put (1), Discus (2), or Hammer (1)
- Great value to protect your throwing investment

9282



### ADD ON WEIGHT

- Use for either hammer or indoor throwing weights
- Economical way to add variable weight to your training without buying more implements
- Adjustable from .5 lb to 2.5 lb

3603 Add on Weight

SHOTS  
THROWING  
WEIGHTS  
DISCUS  
HAMMERS  
JAVELINS



\*733230 Shown.  
Equipment Sold Separately

**INTERNATIONAL IMPLEMENT CARTS**

- HDPE liners keep each implement separated and protected
- 8" never-flat rubber casters for easy movement over rough terrain
- Steel construction with durable powder coat finish

**733100** Shot Cart (Holds 32)

**733110** Throwing Weight Cart (Holds 20)

**733200** Discus Cart (Holds 28)

**733210** Hammer Cart (Holds 16)

**733220** Javelin Cart (Holds 24)

**733230** Combo Cart



\*733230 Shown.  
Equipment Sold Separately



\*9312 Shown

**IMPLEMENT CARTS**

**9315** Javelin Cart (Holds 26)

**9316** Hammer Cart (Holds 18)

**9312** Discus/Shot/Hammer Combo Cart

**TRACK WAGON**

- Conveniently haul a variety of track equipment
- Gates fold down for added convenience
- Large pneumatic tires for rugged terrain travel
- 500 lb capacity to haul even the heaviest of equipment
- 48" long x 24" wide x 12" deep x 25" tall

**937** Track Wagon



**2K TURBO HAMMER**

- Teaches proper throwing mechanics and fundamentals
- Made of durable nylon with strong grip handle
- Ball made with high grade polyethylene rubber with gel filling and sharkskin surface
- Safe for both indoor and outdoor use

**TA1185**

**2K TURBO SHOT**



- Teaches proper throwing mechanics and fundamentals
- High grade polyethylene rubber with gel filling
- Sharkskin grip surface
- Non-marking materials
- Printed uni-grip hand guide for proper positioning

**TA1184**

## SHOT RETURN & STOPS



\*Shown with 872 Base Set, 871 Add-on Kits (3), and Custom Banner

### SHOT PUT RETURN

- Spring loaded Shock-Stop™ absorbs the impact of the returning shot and protects the implement
- Powder coated steel legs adjust in height to control the shot return speed
- Pin pull design allows for simple barrier height adjustment
- Bases include stabilizing rubber feet (indoor surfaces) and spikes (outdoor surfaces)
- Base Set 872 includes 2 bases and 10' of rail
- Each Add-On Kit adds 10' of rail to customize the length to meet the facility needs

872	Shot Put Return Base Set
871	Shot Put Return 10' Add-on Kit
87103CXXSP	Optional Custom Banner

### CUSTOMIZABLE



### SOFT SHOT STOP

- Prevents implements from rolling past the throw sector
- Shock absorbing foam filled barriers wrapped in a 19oz customizable vinyl
- Non-slip material on bottom creates traction to keep barriers in place
- Hook and loop straps secures each barrier to each other and keeps barriers functioning as one unit
- Each barrier is 6' L x 23" W x 23" H

869CXX	Soft Shot Stop
869CXXSP	Soft Shot Stop with Graphics



### HEAVY DUTY IMPLEMENT BARRIER

- Prevents implements from rolling past the throw sector
- Constructed with durable polyethylene
- Each barrier locks together with steel pin to eliminate gaps
- Each section is 6' L x 18" W x 32" H
- 80 lbs empty / 1,110 lbs if filled with water

868

SECTOR LENGTH	# OF UNITS
16m / 52'	6
18m / 59'	7
20m / 66'	8
22m / 72'	8
24m / 79'	9

\*Applies to both 868 and 869 Models

# JAVELINS



The choice of elite throwers worldwide! OTE

javelins are handmade in the USA by the master artisans who are following in the tradition of the world's greatest name in javelin development: Dick Held. The performance potential of OTE javelins is unsurpassed, being used for numerous championship wins and world records.

## PACER®

Built by the same master craftsmen that make the OTE javelins, Pacer javelins feature slightly more generous tolerances. These javelins are built for performance and durability, and are suitable for high level competition. Pacer is the brand of choice for coaches seeking great value.

### BEST SELLER!

## GILL TRUFLIGHT

Tru-Flight javelins allow

athletes to have more efficient practice sessions by purchasing multiple javelins at nearly the same price as a singular higher-priced javelin! Recommended for high school level competition, these javelins offer unsurpassed value and quality for a budget-conscious program.



Gill Athletics is proud to be a North American distributor of Nordic javelins.



Gill Athletics is privileged to continue our exclusive partnership with Countervail® to create the world's most technologically advanced javelins. The OTE Carbon 1 Countervail provides up to a 40% quicker damping rate which results in longer flights with minimal vibration.

The Carbon 1 Countervail is designed after the world-record setting OTE Legend tailwind javelin, and rooted in a patented design by the inventor of modern javelins, Dick Held. Featuring a flex of 4.4 and thicker grip cord for more support and control, this javelin will behave similar to old-rules javelins and appear to "float" when thrown clean.



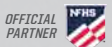
THE ONLY SINGLE-PIECE CARBON JAVELIN IN THE WORLD



CARBON FIBER TECHNOLOGY



THICKER GRIP CORD FOR MAXIMUM PERFORMANCE

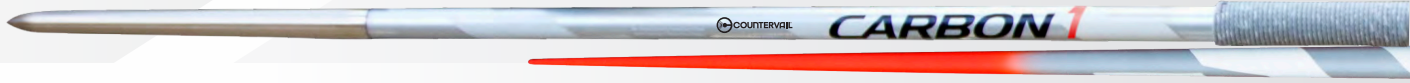


OFFICIAL TRACK & FIELD EQUIPMENT SUPPLIER

## JAVELINS

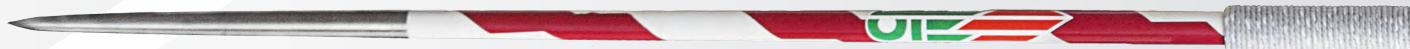


Guaranteed Legal  
Weight and Size



**CARBON 1** COUNTERVAIL

<b>2001H</b>	Headwind		80m	5.4 flex
<b>2001T</b>	Tailwind		80m	5.4 flex



**COMPETITION**

<b>2695H</b>	Headwind		70m	6.1 flex
<b>2695T</b>	Tailwind		70m	6.1 flex



**XTRA**

<b>2690H</b>	Headwind		60m	6.5 flex
<b>2690T</b>	Tailwind		60m	6.5 flex



**SPECIAL**

<b>2684H</b>	Headwind		50m	6.9 flex
<b>2684T</b>	Tailwind		50m	6.9 flex



**INTERMEDIATE**

<b>2663H</b>	Headwind		40m	7.2 flex
<b>2663T</b>	Tailwind		40m	7.2 flex



**600G  
JAVELINS**



**TRU-FLIGHT** 35064 Tru-Flight 40 Universal 40m 8.6 flex



35065 Tru-Flight 50 Universal 50m 8.3 flex



**PACER** 760005 Litania® Universal 40m 8.2 flex



760011 Comet 45 Headwind 45m 7.0 flex



760012 Comet 55 Headwind 55m 6.8 flex



**Nordic Sport** 7961600 Comet Alu 600 Universal 12.1 flex



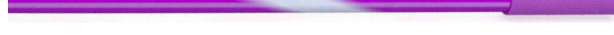
7925600 Viking 600 Universal 11.1 flex



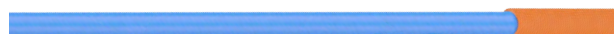
7917601 Diana NXS NXS 7.2 flex



7917602 Diana NXB NXB 7.7 flex



7917600A Master Alu 600 Universal 7.9 flex



**CHOOSE YOUR JAVELIN**

Use this chart for help on how to choose the best javelin.

ABILITY	BEGINNER → ADVANCED
FLEX	12.6 (SOFT) → 4.4 (STIFF)
DISTANCE	40M → 100M

**STEP 1:**

SELECT JAVELIN TYPE

600g women's, 800g men's, or rubber tipped javelin.

**STEP 2:**

CONSIDER YOUR ATHLETE

ADVANCED: Technically proficient throwers who can throw through the point.

INTERMEDIATE: Throwers who occasionally miss accurate flights should switch between OTE and Pacer to help learn proper javelin flight.

BEGINNER: Learn quickest with Tru-Flight javelins and should occasionally try an OTE to get a feel for how to really make it fly.

**STEP 3:**

SELECT YOUR FLEX

Choose a low, mid, or high flex javelin. In general, the stiffer the javelin the longer the throw.

## JAVELINS

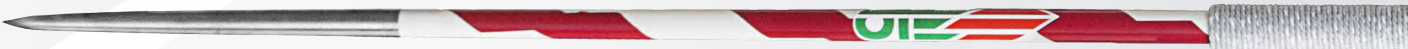


Guaranteed Legal  
Weight and Size



**CARBON 1** COUNTERVAIL

<b>3001H</b>	Headwind		100m	4.4 flex
<b>3001T</b>	Tailwind		100m	4.4 flex



**COMPETITION**

<b>2885H</b>	Headwind		90m	6.3 flex
<b>2885T</b>	Tailwind		90m	6.3 flex



**XTRA**

<b>2890H</b>	Headwind		80m	6.7 flex
<b>2890T</b>	Tailwind		80m	6.7 flex



**SPECIAL**

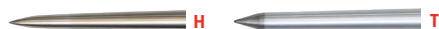
<b>2870H</b>	Headwind		70m	6.9 flex
<b>2870T</b>	Tailwind		70m	6.9 flex



**INTERMEDIATE**

<b>2860H</b>	Headwind		60m	7.1 flex
<b>2860T</b>	Tailwind		60m	7.1 flex

**800G  
JAVELINS**



**GILL TRU-FLIGHT**

<b>35085</b>	Tru-Flight 50	Universal	50m	8.6 flex
<b>35086</b>	Tru-Flight 60	Universal	60m	8.3 flex
<b>35087</b>	Tru-Flight 70	Universal	70m	7.7 flex



**PACER**

<b>780005</b>	Litania®	Universal	50m	8.7 flex
<b>780050</b>	Astro 50	Headwind	50m	7.4 flex
<b>780060</b>	Astro 60	Headwind	60m	7.2 flex
<b>780031</b>	Astro 70	Headwind	70m	6.9 flex



**Nordic Sport**

<b>7961800</b>	Comet Alu 800	Universal	11.4 flex
<b>7922800</b>	Viking 800	Universal	10.4 flex
<b>7916803</b>	Airglider Steel 800	Universal	6.1 flex
<b>7918803C</b>	Valhalla 800	NXS	Medium



**HEADWIND (H)** A headwind version of an OTE javelin describes a streamlined tip designed to help cut through the wind. This javelin tip, because of its small surface area, will have self-correcting characteristics when a thrower misses the point, adding valuable distance to a missed throw. The headwind version is ideal for 'power' throwers who lack perfect technique but make up for it with strength and torque.

**TAILWIND (T)** A tailwind version of an OTE javelin describes a thicker, more blunted tip that increases the surface area in front of the javelin. When a thrower hits the point with a tailwind version of an OTE javelin, it will mimic the old rules style javelins, with a beautiful floating flight and greater distances. This tailwind version is ideal for 'finesse' throwers who lack high outputs of power, yet throw at a high technical level.

## JAVELINS & ACCESSORIES



Guaranteed Legal Weight and Size



### 600G RUBBER TIPPED

2663R	Intermediate RT	40m	7.2 flex
2690R	Xtra RT	60m	6.5 flex



### 800G RUBBER TIPPED

2860R	Intermediate RT	60m	7.1 flex
2870R	Special RT	70m	6.9 flex
2890R	Xtra RT	80m	6.7 flex



Nordic Sport

7968600	Comet RT 600	8.8 flex
7955600	High School 600	Medium



Nordic Sport

7968800	Comet RT 800	8.7 flex
7952800	High School 800	Medium



PACER

760055R	Litania® RT	40m	8.2 flex
760211R	Comet 45RT	45m	7.0 flex
760212R	Comet 55RT	55m	6.8 flex



PACER

780250R	Astro 50RT	50m	7.4 flex
780260R	Astro 60RT	60m	7.2 flex
780033R	Astro 70RT	70m	6.9 flex



GILL TRU-FLIGHT

**BEST SELLER!**

35164R	Tru-Flight 40RT	40m	8.6 flex
35165R	Tru-Flight 50RT	50m	8.3 flex



GILL TRU-FLIGHT

**BEST SELLER!**

35185R	Tru-Flight 50RT	50m	8.6 flex
35186R	Tru-Flight 60RT	60m	8.3 flex



### RUBBER TIPPED STATES:

ALABAMA, FLORIDA, NEW JERSEY, NORTH DAKOTA, SOUTH CAROLINA, SOUTH DAKOTA AND WASHINGTON



### POCKET JAVELIN

- Replicates the feel of a competition javelin
- Aluminum shaft, rubber ends, and real grip cord
- Balance point that matches that of a competition javelin
- Compact design of 13"
- Designed for indoor and outdoor use

34620 600g Pocket Javelin

34820 800g Pocket Javelin



### NOCKEN BALLS

- Designed to give you the look and feel of a javelin while throwing indoors

TA105	400g
TA100	600g
TA101	800g
TA1010	1K



### OUTDOOR THROWING BALLS

- Technique and arm speed training balls. For outdoor use.

TA113	400g
TA114	600g
TA115	800g
TA116	1K
TA117	1.5K
TA118	2K



### INDOOR THROWING BALLS

- Technique and arm speed training balls. For indoor use.

TA102	500g
TA103	600g
TA104	800g
TA1041	1K
TA1042	1.6K
TA1043	2K

### PETRANOFF JAVELINS

- Designed by former world record holder Tom Petranoff (99.72m)
- Advance from 300g to 800g model

TA1193	300g Turbojav
TA1194	400g Turbojav
TA1195	500g Long Tom
TA1196	600g Long Tom
TA1187	700g Turbo Spier
TA1188	800g Turbo Spier



### INDOOR TRAINING JAVELINS

- Air drag cones increase resistance to shorten throw for indoor facilities
- Aluminum shaft with rubber tip for maximum durability
- Close Out - limited QTY available.

TA1198	600g
TA1199	800g



### ALL SURFACE TRAINING JAVELINS

- Designed for indoor, outdoor, and turf surfaces
- Get the balance and weight of a competition implement with a durable metal shaft and real grip cord
- Cost effective way to get more practice implements in your training inventory

34610	600g
34710	700g
34810	800g
34910	900g

REAL GRIP CORD!



### JAVEE JAVELIN TRAINER

- Excellent training aid to develop javelin specific strength, flexibility, range of motion
- Use for static and dynamic stretching and warm up routines
- Improve functional length limits for reduced chance of muscle and tendon injuries
- Variable resistance provided by three strong elastic cords
- Grip diameter specific to 600g and 800g sizes

TA1820	600g
TA1821	800g



### ARCHY ALL SURFACE TRAINING MAT

- Specifically designed to help isolate the shoulder for javelin-specific exercises
- Three different sides create a multi-use training tool for core, flexibility, and technique
- Anti-skid material on bottom of Archy

TA2000

## TRAINING & ACCESSORIES



### PACER® ADJUSTABLE BAG

- Includes 4 protective tubes
- Holds 5-7 javelins (without tubing), 4 javelins (with tubing)
- Heavy duty Cordura nylon
- Universal fit adjusts to hold 600g and 800g javelins

700803



### HARDSHELL JAVELIN TUBE

- Holds five to seven javelins
- ABS plastic material gives peace of mind when transporting valuable javelins
- Universal fit adjusts between 600g and 800g javelins

700804



### JAVELIN BACK BRACE

- Used by javelin throwers around the world
- Supports throwers and helps them throw far and safe
- Fits waist sizes 28-50" (71-127cm)

4581



### NORDIC BACK BRACE

1086292	S, 22" - 28.5"
1086293	M, 28" - 34.5"
1086294	L, 34" - 40.5"
1086295	XL, 40" - 46.5"
1086296	XXL, 46.5"+



### NORDIC ELBOW BRACE

1086392	S, 7.5" - 9"
1086383	M, 8.5" - 12"
1086384	L, 11.5" - 14"
1086395	XL, 13.5" - 15"

# IMPLEMENT ACCESSORIES & KITS

## GILL® HAMMER LENGTH GAUGE

- Aluminum gauge is constructed horizontally for ergonomic use
- Toggle Clamp pulls and straightens the wire for true length
- Hammer Read-Out Tool to precisely capture lengths
- 3-piece unit breaks down for convenient storage



93090



## IMPLEMENT CERTIFICATION KITS

- Official-friendly design assures each implement meets specifications
- Laser cut stainless steel gauges for extreme accuracy and permanency
- High School gauges are 1/4" polycarbonate for durability and grip
- Labeled tabs on each gauge helps organize the process
- Self-contained unit packaged in one convenient case



93051



93075 & 93080

- 93051** High School Certification Kit  
(1K, 1.6K discuses; 4K, 12 lb shot put)
- 
- 93066** Javelin Certification Kit (all javelin competitions)
- 
- 93075** NCAA Certification Kit  
(1K, 2K discuses; 4K, 16 lb shot put; 4K, 16 lb hammer; all javelin competitions)
- 
- 93080** World Athletics Certification Kit  
(1K, 1.5K, 1.75K, 2K discuses; 4K, 5K, 6K, 16 lb shot put and hammer; all javelin competitions)

## GILL® IMPLEMENT SCALES

- Quickly, easily and accurately measure the weight of any track implement
- Works for javelin, discus, hammer, shot, and indoor weight
- Easy zero reset for calibration prior to weighing
- Read out in English or Metric system



93015



## ESSENTIALS™ IMPLEMENT SCALE

- Large 55 lb capacity scale with 'easy press' buttons
- Includes digital auto calibration and full range tare/zero function
- Read out in English or Metric system

- 93015** Up to 15K/33 lb
- 
- 93020** Up to 20K/44 lb
- 
- 93021** Scale Ring



93021

**93010** Essentials™ Implement Scale

## INDOOR THROWING WEIGHT GAUGE

- Easily check the length of indoor weight throw implements
- Adjustable knob assists in the quick calibration of the gauge before each use



93035

## SHOT/HAMMER RETRIEVER

- Ideal for quick, painless pick-up of shots and hammers
- Multi-adjustment height for ergonomic use

940



## SHOT AND DISCUS MARKERS

- Large three square-inch writing surface
- Ample room to write athlete's name or number
- Extra strong pointed base for fast placement
- 7 1/2" long
- 18 gauge steel



**932W** Marker

**932W12** Markers (12)

TRAIN  
HARD

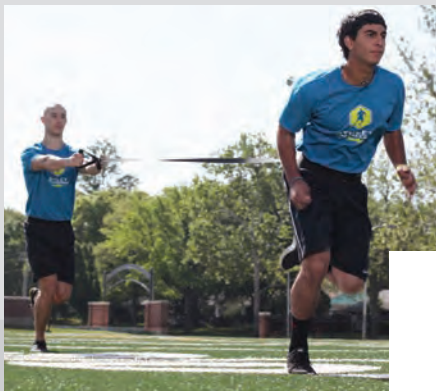






***TRAINING***

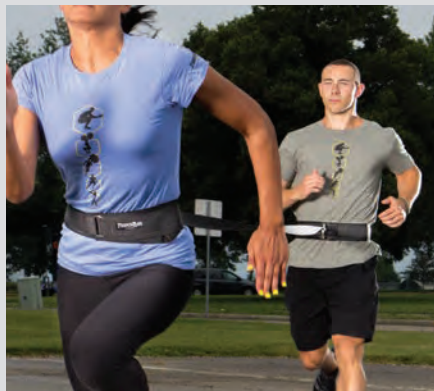
## SPEED DEVELOPMENT



### RESISTANCE TETHER

- **Max Belt compatible**
- Improve speed with resistance running
- Harness attaches to 10' long nylon web cord with handle
- Includes nylon cord and a 3" wide hook & loop closure belt adjustable to 42" waist, and carry bag

TA150



### DUAL RESISTANCE TETHER

- **Max Belt compatible**
- One athlete runs while the other provides resistance
- Includes nylon strap attached to two 3" wide hook & loop closure belts adjustable to 42" waist, and carry bag

TA1521



### TIRE TETHER

- **Max Belt compatible**
- Can be used to drag tires of different sizes for varied workouts
- Includes nylon strap and hardware to attach tire, 3" wide hook & loop closure belt adjustable to 42" waist, and carry bag. *Tire not included.*

TA1384



### DUAL SPEED TRAINER

- **Max Belt compatible**
- Two-person assisted overspeed and resistance running kit
- Overspeed training provided to the rear athlete increases both stride length and frequency.
- Includes 20' latex tubing, two 3" wide hook and loop closure belts adjustable to 42" waist, and carry bag

TA164 20' Medium Tubing

TA165 20' Heavy Tubing



### DYNAMIC TRAINER

- **Max Belt compatible**
- Keeps resistance around the hips or torso
- 10' elastic tube is covered with nylon webbing, can stretch up to 30'

TA158



### POWERMAX® HIP FLEXOR

- **Max Belt compatible**
- Strengthen hip flexors and upper quadriceps
- Offers resistance to muscle groups during any training session and maintains athlete's pure running form
- Up to three ¾ lb weight bars attached to thigh belts
- Includes thigh belts, six ¾ lb weight bars, 3" wide hook & loop closure belt adjustable to 42" waist, and carry bag

TA1511



### SPRINT START SLED

- Unique design provides for clearance over and around virtually all starting blocks
- Includes sled, 11' leads, and 3" wide hook & loop closure belt adjustable up to 42" waist
- Olympic style weight plates may be added to increase resistance.
- Designed by University of Idaho head coach Tim Cawley

TA1541



### POWERMAX® SLED

- Provides lower body resistance that develops speed and strength for all athletes in all sports.
- Add the desired weight to determine resistance. Load up to 200 lb. 15" tall post fits 4 Olympic bumper plates.
- Includes sled, 11' lead, 3" wide hook & loop closure belt adjustable to 42" waist, and instructions. *Weights not included.*

TA154 Sled with Belt

TA156 Sled with Shoulder Harness



**BEST SELLER!**

### POWERMAX® PUSH/PULL SLED

- The PowerMax Push/Pull Sled is great for versatility and adjustability in speed training.
- USA made 11 gauge steel frame sled
- Space-saving design that is less than 7" high when folded
- Replaceable/removable runners for use on a variety of surfaces
- Quick release pins for fast set-up and breakdown
- Adjustable width push posts (12-21" W x 32" H) and multiple push/pull options
- Sled weighs 45 lb (empty)
- Holds up to 300 lb, center post fits four 45 lb bumper plates
- Includes waist belt and harness

TA155 Sled w/Belt + Harness



### FLYWEIGHT SPEED SLED

- Ideal sled to add incremental resistance to your athletes
- Easy storage
- Weighs less than 7 lb
- Includes waist belt, nylon leads, carabiners and sled

TA157



### POWERMAX® VARIABLE RESISTANCE CHUTE

- The PowerMax VR Chute features a hook & loop closure baffle panel that can be opened or closed to achieve desired resistance.
- Open the baffle for reduced resistance or close to increase it.

TA163M S/M Gray

TA163XL L/XL Black



OFFICIAL TRACK & FIELD EQUIPMENT SUPPLIER

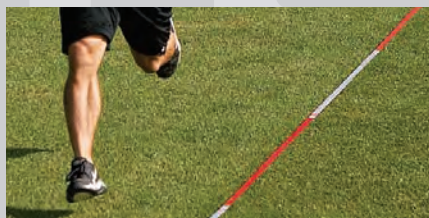
## SPEED DEVELOPMENT



### BULLET BELT™ SYSTEM

- For resistance to improve starting and acceleration mechanics
- Hook & loop closure for easy release giving a contrast workout from resistance to free running
- Adjustable belt

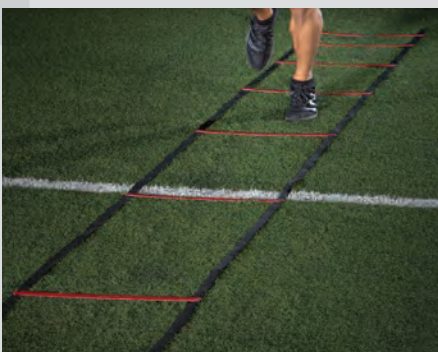
TA138



### STRIDE CHECKER

- Improve stride length and frequency
- 30M long with segmented markings
- Usable on most surfaces
- Includes storage bag

TA1695



### POWERMAX® ACCELERATION LADDER

- Incrementally increase stride length and frequency
- Increasing stride spacing from 12" to 69"
- All red rungs, black sides, and a carry bag

TA168 37'6" X 20"



### POP BELT™

- The Bullet Belt "Pop" release is the basic design in the Bullet Belt series
- Used to train explosive sport-specific skills

TA1383



### ANKLE-FLEX STRAPS

- Holds sprinter's foot flexed
- Improved ground strike efficiency

TA1485



### BULLET BELT SPEED PULLEY

- This two-person over-speed trainer features a unique safety release if towed athlete cannot maintain pace.
- Comes with 30m of cord and a Bullet Belt universal web belt.

TA1381



### TC-TIMER SYSTEM

The TC-Timer is a wireless timing device that enables athletes and coaches to measure time, speed, count repetitions, input test data and save it all in the TC-Timer memory.

- Sends radio transmissions up to 1,000 feet
- Accurate to the 100<sup>th</sup> of a second
- Equipped with 5 different radio frequencies allowing multiple systems to be used in the same area
- All components fit neatly into a small lumbar pack

E38720 TC Timer System **\$1955**

E38721 Pair, Additional TC Gates **\$1070**

### BLACK BOX TIMING SYSTEM

The Black Box system timing data is displayed on a smart-phone instead of the TCi Timer using a BLE connection. Add up to 20 split beams for testing and custom applications.

E38711

# MED BALLS



**BEST SELLER!**

## POWERMAX® V2 MED BALLS

- 18 oz. flexible moisture resistant polyurethane shell textured for grip
- Hand-sewn casing design and expert ball construction
- Dimensionally stable, balanced, and maintains the impact absorbing properties
- **One year warranty**

TA1362	6 lb	Ø 14"
TA1363	8 lb	Ø 14"
TA1364	10 lb	Ø 14"
TA1365	12 lb	Ø 14"
TA1366	14 lb	Ø 14"
TA1367	16 lb	Ø 14"
TA1368	18 lb	Ø 14"
TA1369	20 lb	Ø 14"



## POWERMAX® RUBBER MED BALLS

- Synthetic rubber balls suitable for all sports.
- Can be used indoor and outdoor.
- Color coded for easy weight identification.

TA106	1K Purple	Ø 6.5"	TA111	5K Blue	Ø 10.5"
TA108	2K Yellow	Ø 7.5"	TA112	6K Orange	Ø 11"
TA109	3K Green	Ø 9.5"	TA131	7K Gray	Ø 11.5"
TA110	4K Red	Ø 9.5"	TA132	8K Black	Ø 12"



## NON-BOUNCE MED BALLS

- Material is made from durable PVC.

TA13204	4 lb	Ø 9"
TA13206	6 lb	Ø 9"
TA13208	8 lb	Ø 9"
TA13210	10 lb	Ø 9"
TA13215	15 lb	Ø 9"
TA13220	20 lb	Ø 9"
TA13225	25 lb	Ø 9"
TA13230	30 lb	Ø 10 1/2"
TA13240	40 lb	Ø 10 1/2"
TA13250	50 lb	Ø 10 1/2"



## POWERMAX® GRIP BALLS

- Durable rubber shell with filler and comfortable built in rubber handle.
- Will not harm rubber floors. Balls are Ø 8" (diameter), grip is 1" x 1 1/4".

TA4002	2 lb
TA4004	4 lb
TA4006	6 lb
TA4008	8 lb



## POWERMAX® SWING BALLS

- For swinging, slamming, and rotation drills
- Rope: 1/2" nylon with a 30" handle from stopper to end

TA1332	2K Yellow	Ø 7.5"
TA1333	3K Green	Ø 9.5"
TA1334	4K Red	Ø 9.5"
TA1335	5K Blue	Ø 9.5"



Fits Powermax® V2 Medicine Balls

## DOUBLE-SIDED RACK

- Powder-coated steel rack holds up to 10 balls

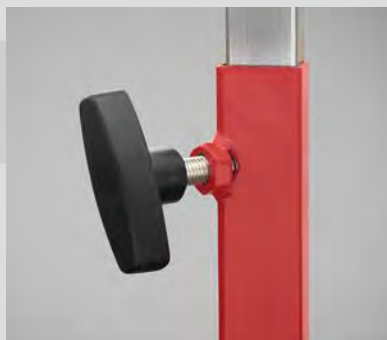
TA1292	63" x 22.5" x 9" (27 lb)
--------	--------------------------

## JUMP TRAINING

### THE POWERMAX® VERTICAL JUMP TRAINER

The PowerMax® Vertical Jump Trainer is constructed of aluminum, providing a lightweight, reliable solution for any vertical training needs. Tip and Roll wheels provide easy transportation while the rubber adjustable feet offer a secure base that won't mar your floor. Foldable Weight Arms on both ends of the base allow for weights to be added for more stability. Colored vanes provide quick and easy measurement readings. Height ranges from 95" to a maximum height of 146"

TA205





**POWERMAX® ELECTRONIC VERTICAL JUMP TESTER**

- Measures from 7' to 12' in ½" increments
- Light up dots on the height scale and digital display immediately show the exact jump height
- Data is downloadable to any computer
- Height decal offers quick "zero" marking
- Standing height measuring strip helps establish base height of reach prior to jump

TA199C12



**BEST SELLER!**

**SOFT PLYOBXES**

- Standard 28" x 28" blocks
- 3" block is built with 2.2# density polyethylene foam, other sizes with 1.8# which provides stability, shock attenuation, and performance
- Secured for stacking with industrial strength Velcro®
- Durable vinyl cover with two reinforced handles for portability
- Each box weighs less than 28 lb

TA203	3" Soft Plyobox
TA206	6" Soft Plyobox
TA212	12" Soft Plyobox
TA218	18" Soft Plyobox
TA224	24" Soft Plyobox
TA225	Set of 5, 1 of Each Size

**STEEL PLYOBXES**

- 1" square steel tubing
- Plywood top platform with 10mm rubber surface
- Anti-skid rubber on base corners prevents slipping and protects floors
- Tapered design allows for stacking and stability



TA3060	6" Plyobox
TA312	12" Plyobox
TA318	18" Plyobox
TA324	24" Plyobox
TA330	30" Plyobox
TA336	36" Plyobox
TA342	42" Plyobox
TA301	4pc. Plyobox Set (12", 18", 24" & 30")
TA300	6pc. Plyobox Set (12", 18", 24", 30", 36" & 42")

# TRAINING

## PLYOMETRICS



### PLYO RUNWAY MAT

Surface reduces stress of impact on joints and muscles during explosive training sessions.

**TA303** 3'W x 6'L x ¼" thick



### POWER PAD

- Low-impact, energy absorbing foam pad
- 48"L x 48"W x 24"H

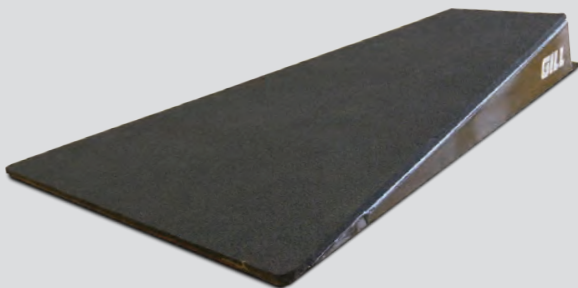
**TA194**



### FLAT JUMP PLATFORM

- Made of lightweight aluminum and covered with synthetic track material
- Easy to transport between practices
- Track spikes can be installed to ensure no slipping if needed
- Platform is 5" x 34" x 19"

**TA198**



### LAUNCH PAD

- Allows for more jumps per session
- Steel construction with welded support braces
- Synthetic track material on jump surface
- Track spikes can be installed to ensure no slipping if needed

**TA1921**



### ARCHED JUMP BOX

- Convex jumping box made of lightweight steel that is easy to carry to and from practices
- Covered in synthetic track material to simulate the same feel as your track and runways
- 8" high in the middle by 30" wide and 47" long

**TA193**





### POWERMAX® VERSA-HURDLE

- Built-in safety feature causes the hurdles to collapse upon impact
- Adjustable from 12" to 42"
- 18 gauge tube steel with durable gate board

100	Hurdle
101	Versa-Hurdle Bag

### FOAM TRAINING HURDLE

- Ideal training hurdle made of forgiving foam
- Heavy enough to remain upright, yet light enough to be completely portable
- Durable vinyl covering allows for indoor and outdoor use
- Heights: 30", 33", 36", & 39"

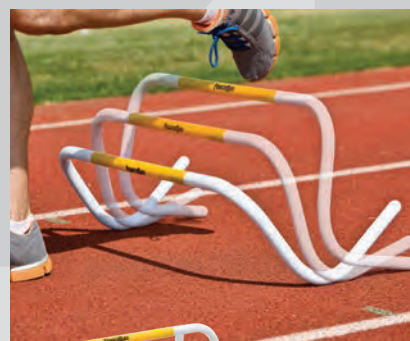
409



### SMART HURDLE

Smart Hurdles have a three point base for superior stability on all surfaces. Smart Hurdles are durable, lightweight, and easy to carry.

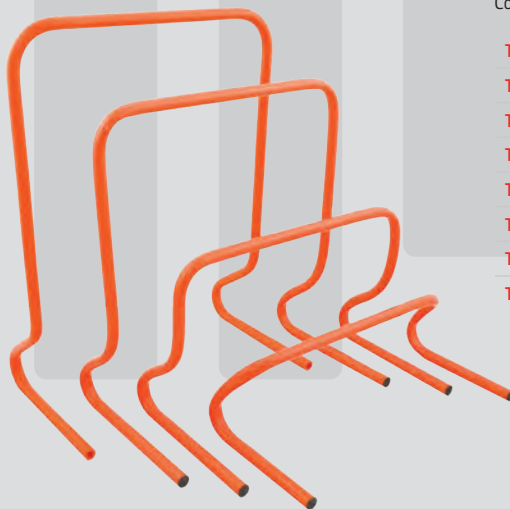
TA18544	21-36" Adjustable Hurdle
TA18545	27-42" Adjustable Hurdle



### AGILITY ROCKER HURDLES

Weighted base allows hurdles to rock back into the starting position. Colors may vary.

TA1676	6" Hurdle
TA1678	8" Hurdle
TA16710	10" Hurdle
TA16712	12" Hurdle



### STEP HURDLES

Constructed of durable, lightweight PVC tubing

TA167	6" Hurdle
TA1675	6" Hurdles (5)
TA166	12" Hurdle
TA1665	12" Hurdles (5)
TA16618	18" Hurdle
TA166185	18" Hurdles (5)
TA16624	24" Hurdle
TA166245	24" Hurdles (5)



### VARIABLE HEIGHT STEP HURDLES

The 2-in-1 hurdle can quickly and easily be adjusted to 2 heights (8"-12") and folds flat for storage.

TA1662	2-in-1 Hurdles
TA16625	Set of 5 with Bag
TA16601	Mesh Carry Bag (Holds 5 Hurdles)

## AGILITY TRAINING

### POWERMAX® WEIGHT VEST

- Holds soft double stitched ½ lb weights
- Purchase additional ½ lb packs to fill short vest up to 20 lb or the long vest up to 40 lb
- Moveable shoulder straps 2 ¾" wide with 5 ½" of adjustability
- Short vest fits up to a 40" chest/waist, 18" L x 16" W, long vest fits up to a 57" chest/waist, 23" L x 16" W

TA1226 Short 10 lb Vest

TA1227 Long 20 lb Vest

TA1228 10 weight packs (5 lb)

TA12281 20 weight packs (10 lb)

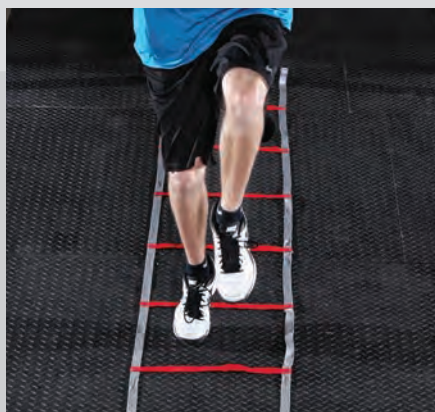
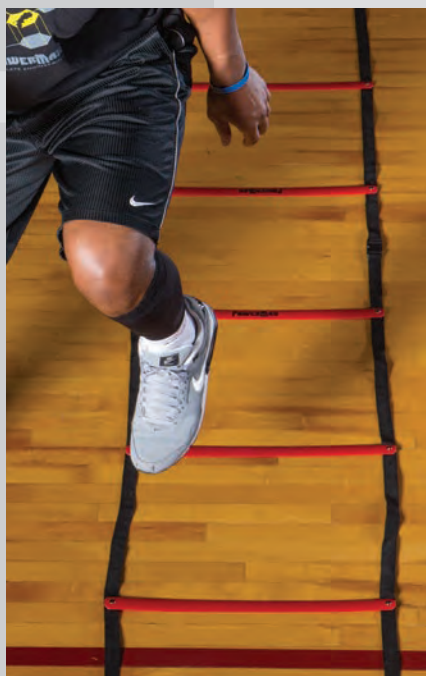
TA12282 40 weight packs (20 lb)



TA1226



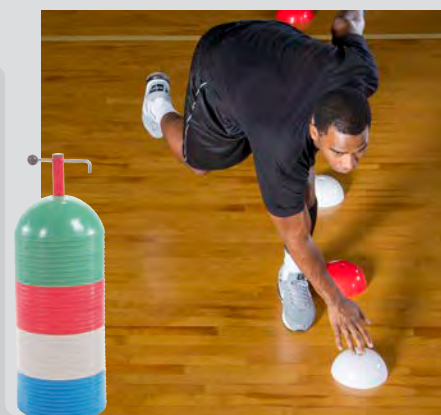
TA1227



### POWERMAX® WEB LADDER

- Sewn nylon ladder is 16' L x 18" W
- Slats every 18"
- Includes storage bag and 4 ground stakes

TA1696



### POWERMAX® AGILITY DOMES

- Multicolored domes are ideal to mark an agility course
- Durable impact resistant polyethylene
- Includes 40 domes (10 in each color) and storage rack

TA1852

### BEST SELLER!

### POWERMAX® AGILITY LADDERS

- 15' ladder comes in two 7' 6" sections with 10 slats total
- 30' ladder comes in four 7' 6" sections
- Easily connect with other ladders
- 20" wide with 18" between slats, not adjustable
- Includes 1 agility ladder & carry bag

TA1691 15' Agility Ladder

TA1681 30' Agility Ladder



### POWERMAX® SAND BAG SET

- Leak proof inner bags hold 20 lb of sand securely (sand not included)
- Inner bags are pre-marked for easy measurement
- Five strategically placed padded handles
- Set includes inner and outer bags, holds up to 80 lbs

TA12241



### POWERMAX® ADJUSTABLE ANKLE WEIGHTS

- Made of stretchable neoprene
- Adjustable weight up to 5lb total
- 21" x 5.25" x 1/2"

TA1861



TA128

**SPEED ROPES**

- Stainless steel cable encased in plastic
- Ball bearing in handles for quick turnover
- Fixed length
- Includes carry bag for easy storage
- Padded handles for comfort

TA128 9' Speed Rope

TA1281 10' Speed Rope



TA1274

TA1273

TA1271

TA1272

**BEGINNER SPEED ROPES**

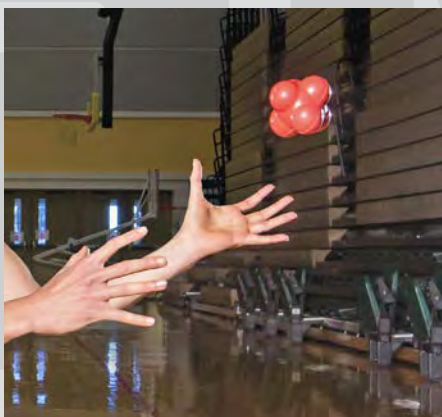
- These PVC ropes feature lightweight plastic handles and high-spin swivels

TA1271 7' (Green)

TA1272 8' (Blue)

TA1273 9' (Red)

TA1274 10' (Yellow)



**REFLEX BALL**

- Improve reaction time and eye-hand coordination
- Non-marking rubber provides unpredictable bounce
- 4" diameter

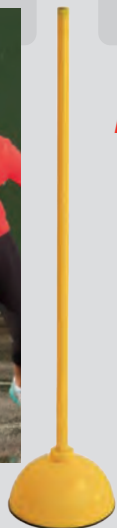
TA144



**AGILITY RINGS**

- Create patterns to challenge footwork or set a pattern of acceleration
- Can be used on a variety of surfaces, ideal on textured surfaces

TA1693 Set of 12



**AGILITY POLES**

- 5' tall poles force athletes to maintain posture
- Includes 4 bases and 4 poles
- Add sand or water to base for additional stability

TA1850

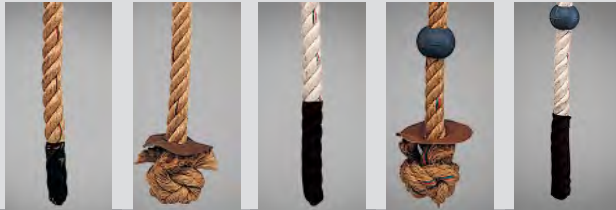


**AGILITY DOTS**

- Dots are easy to store and transport
- Easy to see bright colors

TA1694 Set of 6

## BODYWEIGHT TRAINING



	Vinyl Boot End Collegiate	Knotted End Hemp	Vinyl Boot End Dacron	Ball Knotted Hemp	Boot Knotted Dacron
12' Long	00199012	00113120	00118120	00115120	00119120
16' Long	00199016	00113160	00118160	00115160	00119160
20' Long	00199020	00113200	00118200	00115200	00119200
24' Long	00199024	00113240	00118240	00115240	00119240



### HEMP CLIMBING ROPES

This 1-½" rope contains 12-18% mineral oil lubricant by weight for long life and is securely attached within a heavy-duty steel fitting for years of durability. Optional rubber knots anchored every 12". Collegiate ropes are finished with a vinyl boot.

#### ROPE ATTACHMENT METHODS



#### 3 ½" OD PIPE CLAMP

XCLP97001002



#### STAPLE PLATE

10340000 For Wood Beams

10341000 For Concrete Beams



#### STEEL I-BEAM CLAMP

10100100 Fits ≤8" Beams

10100200 Fits ≤17" Beams

### SOFT DACRON ROPES

Soft Dacron ropes are ideal for elementary physical education programs. The no-twist spun Dacron material is easier on hands than hemp ropes and will wear better than cotton. Hypoallergenic.

#### ROPE ACCESSORIES



#### TAMBOURINE

3/8" lacquered plywood tambourine restricts climbing height. Clamp permits fast removal & easy adjustment.

00198000



#### ROPE HOIST

Hoist is complete with wall brackets, ceiling attachment, heavy-duty cord and weight. Installs easily, ready to use.

00104000



#### SAFETY GUARD

Safety guard prevents the rope from falling if a part fails or wears out.

00110000



### POWERMAX® CONDITIONING ROPES

Ropes help athletes with power generation, strength endurance, and increased cardio development.

- 1.5" or 2" Thicknesses with finished handles to prevent shedding and blistering
- Synthetic fibers
- Optional bracket fits up to 2.125" rope, made of .125" flat steel and round bar

TA1606 1.5" Synthetic Rope – 30'

TA1607 1.5" Synthetic Rope – 40'

TA1608 1.5" Synthetic Rope – 50'

TA1617 2" Synthetic Rope – 30'

TA1618 2" Synthetic Rope – 40'

TA1619 2" Synthetic Rope – 50'

TA1613 Rope Wall Bracket





**MULTI-STATION WALL-MOUNTED CHINNING BARS**

- 10' long chinning bar with three stations
- Mounts 16" away from the wall
- 1" solid steel diameter grip with a durable zinc plated finish

00196013 10' 3 Piece Steel Chinning Bar



**BEST SELLER!**

**WALL-MOUNTED CHINNING BAR**

- 50" wide by 21" tall with 1" grip diameter
- Bar is 22" away from wall/ceiling
- 48" mounting centers
- Black powder coat finish
- *Hardware not included*

WE179



**ADJUSTABLE CHINNING BAR**

- 1" Grip diameter
- Bar is 22" away from wall
- 48" Mounting centers
- Black powder coat finish
- *Hardware not included*

00197100



**PEG BOARD CLIMBERS**

- 1 1/2" Thick gloss finished hardwood
- Rectangle has 11 holes spaced on 10" centers. Holes are arranged in 2 rows with staggered alignment
- Square has 16 holes spaced on 7 1/2" centers in a 4 x 4 grid pattern
- Two  $\phi 1\frac{1}{2}$ " x 6 1/2" wood pegs included
- Mount directly to the wall or use optional mounting brackets
- *Hardware not included*

00188 Rectangle 15" x 60"

00189 Square 30" x 30"

001881 Pair, Mounting Brackets

001891 Pair, Wood Pegs



## WEIGHT BARS & PLATES



### CAMBERED SQUAT BAR

- This bar allows squats to be done in a more vertical posture, producing intensified quadriceps involvement.
- Cambered end design relieves much of the lower back stress normally associated with a back squat.
- All steel design with padded shoulder harness.

WT129

### WOMEN'S HYBRID BAR

- 79" Carbon steel bar
- 33 lb weight
- 25mm grip diameter
- 400 lb weight rating

WT1216



### POWER BAR

- 86" Bright Zinc Plated Sleeve bar
- 45 lb weight
- 32 mm grip diameter
- 1200 lb weight rating
- Lifetime warranty against bending

WT1203



### PRO BAR WRAP PAD

- Protects shoulders and back during lifting exercises
- Black nylon cover with high quality foam insert
- 14" Long

WE310



### STEEL SPRING COLLARS

Traditional, functional steel spring collar

WT131

**SOLID RUBBER BUMPER PLATES**

Bumper plates are the ideal tools for any lift from a standing position. Designed to impact the ground without creating damage to the floor, these new plates are thinner for those who wish to lift larger loads.

- 100% Rubber plates with solid steel insert
- Fit any olympic-style bar
- Colored plates feature colors to help guide weight selection
- Plates are sold in pairs
- Standard plate size 18" diameter

45 LB  
WT245CB



3.5"

35 LB  
WT235CB



2.75"

25 LB  
WT225CB



2"

10 LB  
WT210CB



1"

45 LB  
WT245B



3.5"

35 LB  
WT235B



2.75"

25 LB  
WT225B  
\$161/pr



2"

15 LB  
WT215B  
\$132/pr



1.5"

10 LB  
WT210B  
\$101/pr



1"



**ROLLING BUMPER STAND**

- Rugged casters allow for easy transport
- Stores up to ten 45 lb bumper plates
- Removable center post for easy load/unload
- Laser cut 1/2" steel base
- 36"H x 24"W x 24"D, 25 lb

WE528



**WRIST STRAPS**

Provides support for Olympic lifts, overheadwork, and bench presses.

WE31912 12" Wrist Straps

## FLEXIBILITY & REHAB



### POWERMAX® STRENGTH BANDS

- Resistance determined by thickness & width
- 41" long, seamless latex rubber
- Layered construction helps prevent breakage
- Sold individually

<b>TA17110</b>	<i>XX-Light 35 lb Resistance, .5", Red</i>
<b>TA17160</b>	<i>X-Light 50 lb Resistance, .75", Orange</i>
<b>TA17170</b>	<i>Light 65 lb Resistance, 1", Violet</i>
<b>TA17120</b>	<i>Medium 80 lb Resistance, 1.7", Blue</i>
<b>TA17130</b>	<i>Heavy 150 lb Resistance, 2", Green</i>
<b>TA17140</b>	<i>X-Heavy 175 lb Resistance, 3", Black</i>
<b>TA17150</b>	<i>Super 200 lb Resistance, 4", Yellow</i>



### POWERMAX® MINI BANDS

- Great tool for warm-ups, hip muscles, and small intrinsic muscles
- 2" wide x 13" long

<b>TA1741L</b>	<i>10 Light Bands (Red)</i>
<b>TA1741M</b>	<i>10 Medium Bands (Gray)</i>
<b>TA1741H</b>	<i>10 Heavy Bands (Black)</i>



### POWERMAX® STABILITY BALLS

- Excellent for balance, abdominal work, and stretching
- Fabricated from durable vinyl, supports 500 lb
- *Ships Deflated*

<b>TA1805</b>	<i>55 cm Ball (5' - 5' 8")</i>
<b>TA1806</b>	<i>65 cm Ball (5' 8"-6' 2")</i>
<b>TA1807</b>	<i>75 cm Ball (6' 2"+)</i>





**5" MASSAGE BALL**

- Helps eliminate muscle knots, tension, and tightness
- Multi-directional roll to pinpoint specific muscles
- Two layer design with firm interior and soft exterior

TA1841



**STRETCH OUT STRAP**

- PNF stretching without a partner
- Eight 8" Handles allow a variety of stretches
- 62" Length x 4" Width x .5" Thickness

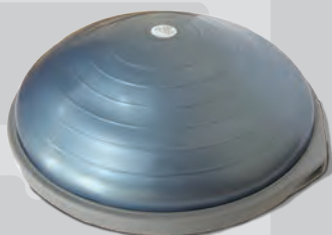
TA1781



**STRETCHRITE™**

- Increase tension by changing grip position
- Change or isolate the stretch by rotating foot inward or outward

TA1780



**BOSU® BALANCE TRAINER**

- Fitness / health professional version
- Includes program manual, training video, & free pump

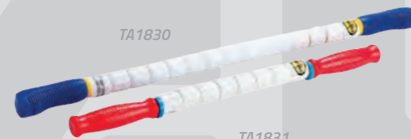
TA1790



**POWERMAX®  
FOAM ROLLER**

- For advanced balance exercises or pressure massage
- Constructed of high density foam
- 6" Diameter x 36" Length

TA3620



**THE STICK**

- Excellent tool for injury prevention and rehabilitation
- Used by professional athletic teams

TA1830 24" Stick

TA1831 18" Stick



**ROLL-UP EXERCISE MAT**

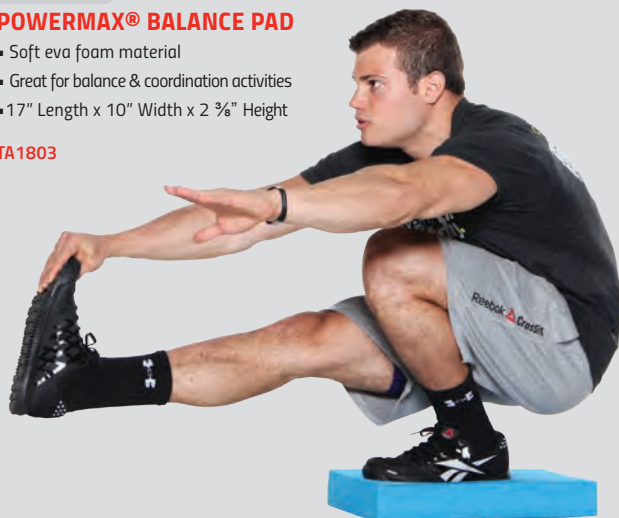
- Soft, durable foam with textured surface
- Roll-up for portability and storage
- 24" Width x 70" Length x .125" Height

TA304

**POWERMAX® BALANCE PAD**

- Soft eva foam material
- Great for balance & coordination activities
- 17" Length x 10" Width x 2 3/8" Height

TA1803



LET IT

FLY



**FACILITIES**

## HAMMER CAGES



**SAFETY.**  
**CONVENIENCE.**  
**LONGEVITY.**



**Gill hammer cages** have exclusive features that protect athletes, officials, and spectators from errant throws in the hammer event. Combined with an industry best five-year warranty, Gill Athletics keeps your facility at the top of its class in safety and efficiency. Your facility deserves the best.

### SAFETY PULLEY SYSTEM

Block and tackle pulley system lowers the net to safely remove 'stuck' implements from the nets without climbing.

### FRONT DOOR CABLE DESIGN

With Gill's exclusive tensioning cable front door design your cage will increase athlete safety and efficiency in the event. No more bent front pole from errant throws, and decrease the likelihood of bounce backs from implements.

### DOOR HINGE LOCK BOLT

Suggested from the top track designer in America, this unique feature keeps your front doors from tweaking and misaligning from the door hatch location.

### REAR DOOR ACCESS

Netting System that keeps your athletes away from the throwing sector of the front cage while increasing the speed of repetitions.



*Block & Tackle Safety Pulley System Shown*

## CUSTOMIZABLE CAGES

### Pole Color (XX)



\*To specify your color selection, use the two-digit number to replace XX in the item number.



## CUSTOMIZABLE CAGES

See color charts on page 98 to replace the XX in the item numbers.



### BLOCK & TACKLE SAFETY PULLEY SYSTEM

#### MAXIMUS™ HAMMER CAGE

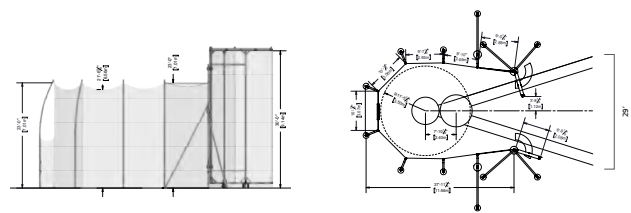
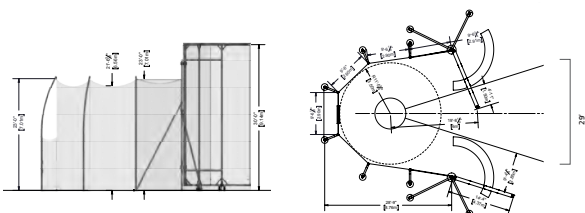
▪ 5 Year Warranty

742130	Cage
742130CXX	Cage with Custom Color
74213001	Ground Sleeve Kit
732103	Optional Barrier Net (8')

#### MAXIMUS™ DOUBLE RING HAMMER CAGE

▪ 5 Year Warranty

742135	Cage
742135CXX	Cage with Custom Color
74213501	Ground Sleeve Kit
732108	Optional Barrier Net (8')

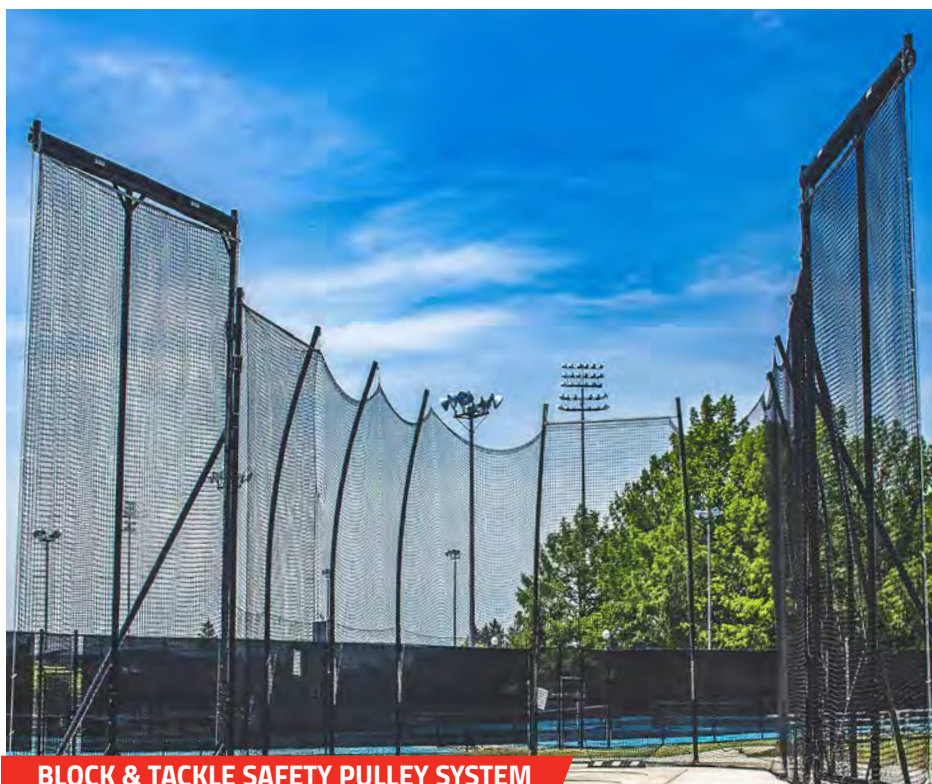


## HAMMER CAGES



### CUSTOMIZABLE CAGES

See color charts on page 98 to replace the XX in the item numbers.



**BLOCK & TACKLE SAFETY PULLEY SYSTEM**

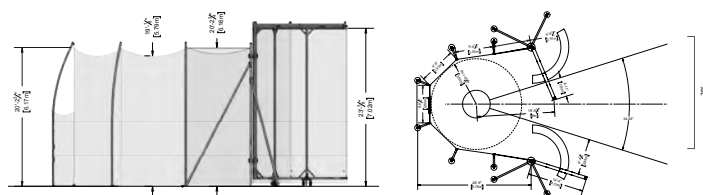


**REAR DOOR ACCESS**

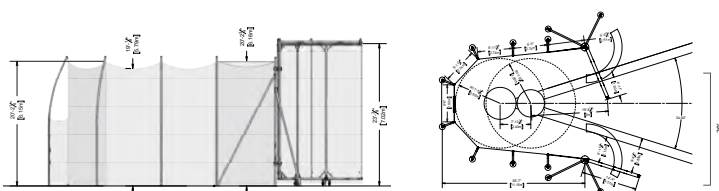
KEEPS YOUR ATHLETES AWAY FROM THE THROWING SECTOR OF THE FRONT CAGE WHILE INCREASING THE SPEED OF REPETITIONS.

### NCAA HAMMER/DISCUS CAGES

- Available in single ring or double ring design
- Poles: 6063-T6 aluminum net poles
- Doors: Cages have 7m tall aluminum doors with galvanized steel door hinge poles. Tall Cages have 8m tall doors.
- Net: Weather treated nylon 6 net with 749 lb break strength
- Cage - Main net: 20' 6"/6.25m, Door net: 23'/7m
- Tall Cage - Main net: 23'/7m, Door net: 26' 3"/8m
- All cages include required cage door bracing.
- Ground sleeve kit sold separately
- **Meets NCAA Specifications**
- **5 Year Warranty**



SINGLE RING CAGES



DOUBLE RING CAGES

### SINGLE RING CAGE

742110	Cage
742110CXX	Cage with Custom Color
74211001	Ground Sleeve Kit
732103	Optional Barrier Net (8')

### TALL SINGLE RING CAGE

742120	Tall Cage
742120CXX	Tall Cage with Custom Color
74212001	Ground Sleeve Kit
732103	Optional Barrier Net (8')

### DOUBLE RING CAGE

742115	Cage
742115CXX	Cage with Custom Color
74211501	Ground Sleeve Kit
732108	Optional Barrier Net (8')

### TALL DOUBLE RING CAGE

742125	Tall Cage
742125CXX	Tall Cage with Custom Color
74212501	Ground Sleeve Kit
732108	Optional Barrier Net (8')



732310C23



On all Gill Cages  
Call for Details.

**COLORS**



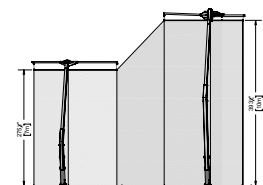
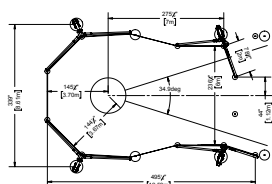
\*To specify color with order, use the two-digit number of your color selection to replace XX in the item number.

**THOR 10 HAMMER/DISCUS CAGE**

- Poles: (4) Combination of steel and aluminum to withstand up to 74mph winds
- Doors: (2) 10m x 2m swing arm doors
- Net: 1 3/4" square mesh woven poly cord with 771 lb break strength
- Main net height: 23'7m, Door net height: 32'10"/10m
- Net is secured by net rails across entire cage and 14 rope anchors
- 59" deep ground sleeves
- Meets NCAA and World Athletics specifications
- 5 Year Warranty

732310CXX Thor 10 Hammer/Discus Cage

73231001 Ground Sleeve and Net Anchor Kit



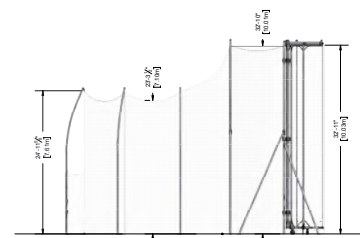
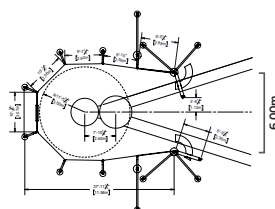
**INTERNATIONAL DISCUS/HAMMER CAGE**

- Poles: (8) 6063-T6 aluminum net poles
- Doors: (2) Galvanized steel door hinge poles and 10m tall aluminum moveable doors
- Net: Weather treated nylon 6 net with 340.7kg break strength
- Ground sleeve kit sold separately
- Meets NCAA specifications.
- 5 Year Warranty

742145 Cage

74214501 Ground Sleeve Kit

732218 Optional Barrier Net (8')



## DISCUS CAGES



### APOLLO DISCUS CAGE

- Poles: (3) Combination of steel and aluminum to withstand up to 62mph winds
- Net: 1 3/4" square mesh woven poly cord with 352 lb break strength
- Net height: 18'
- Net is secured by 14 hanging points and 8 rope anchors
- 36" deep ground sleeves
- *Meets NCAA and World Athletics Specifications*
- *5 Year Warranty*

732301CXX *Apollo Discus Cage*

732301009 *Ground Sleeve and Net Anchor Kit*

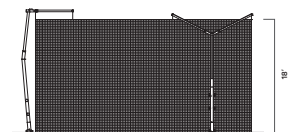
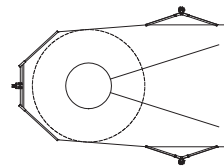
### COLORS

22 23 25  
ARCH GRAY ARCH BLACK ARCH WHITE

*\*To specify color with order, use the two-digit number of your color selection to replace XX in the item number.*



*On all Gill Cages  
Call for Details.*







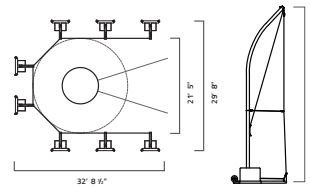
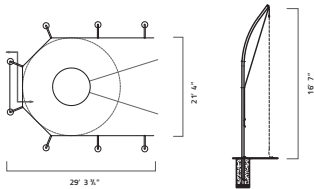
## CUSTOMIZABLE CAGES

See color charts on page 105 to replace the XX in the item numbers.



732130

OPTIONAL BARRIER NET SHOWN



### NCAA ALUMINUM DISCUS CAGE

- Poles: (8) 6063-T6 aluminum net poles
- 16' 7" Net: Weather treated nylon 6 net with 340 lb break strength
- Rear door access net standard
- Rear net support tubes prevent net sag
- 18" hinged net arms secure net at all eight poles
- 36" deep ground sleeves
- *Meets NCAA specifications*
- *5 Year Warranty*

732130 Cage

732130CXX Cage with Custom Color

732132 Optional Barrier Net (8')

### NCAA PORTABLE DISCUS CAGE

- Designed for set up and removal as needed
- Poles: (8) 2 1/2" outside diameter 6063-T6 aluminum net poles
- 16' 7" Net: Weather treated nylon 6 net with 340 lb break strength
- Base: A500 Grade B steel equipped with wheels. To be weighted with sand or water filled jugs.
- 5 gallon jugs with gray vinyl covers included. Covers available in other colors or with custom graphics for an additional charge.
- *Meets NCAA specifications*
- *5 Year Warranty*

732230 Cage

732230CXXYY Cage with Custom Color

Pole Color (XX) Vinyl Color (YY) See color chart on pg 106

### BRUTUS NCAA DISCUS CAGE

- For high wind areas that need extra strength discus cages
- Made of Hammer Cage strength 4" outside diameter aluminum poles
- *Meets NCAA specifications*
- *5 Year Warranty*

732150 Brutus Cage

732150CXX Brutus Cage, Custom Color

## DISCUS CAGES

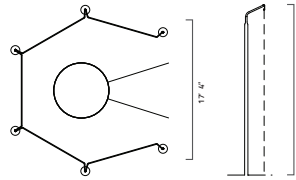


### PRO-DOWN DISCUS CAGE

- Poles: (6) 2 3/8" outside diameter 12 gauge steel poles
- 10' 6" Net: Knotless weather treated nylon net with 180 lb break strength
- Five galvanized steel top rungs eliminate net sag
- *Meets NFHS specifications*
- *5 Year Warranty*

**80401** Cage with Ground Sleeves

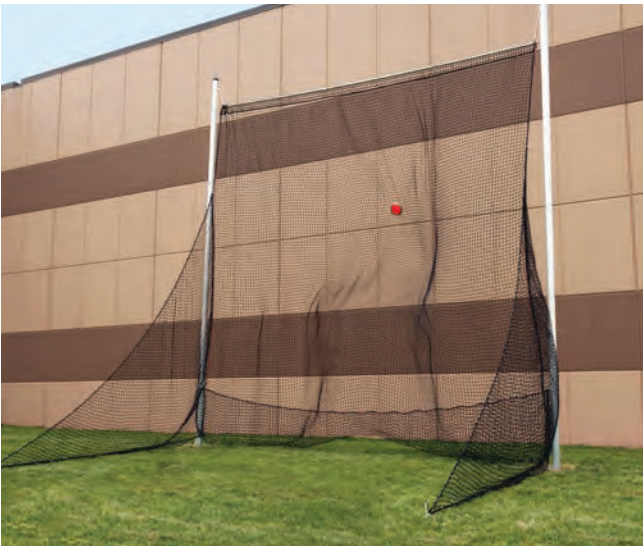
**80402** Cage with Plates



### DISCUS SECTOR NET

- Effective at stopping a discus from skipping outside of the sector
- 2' tall by 60' long 320 lb break strength discus net
- Held by 3/4" diameter steel net poles and ground stakes
- Polyethylene net spools included for convenient storage and handling

**731135**



### OUTDOOR THROWING NET

- Get the maximum number of reps with the minimal amount of retrieval
- Provides the perfect set up for working on throwing technique for shot put, discus and javelin (weighted balls)
- Bottom of main net has a pocket to catch implements before they hit the ground, preventing damage and making retrieval easier
- Side nets offer additional errant throw protection
- Poles: 4" diameter, 1/8" wall, T6 aluminum tube in 40" deep ground sleeves
- Nets are 749 lb test weather treated knotted nylon
- Main net is 20' x 20'

**731300**



732150C03

**COLOR OPTIONS AVAILABLE!**

*Transform Your Cages with Custom Powder Coat*

**CUSTOMIZABLE**

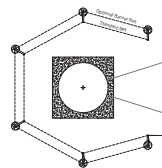


*\*To specify color with order, use the two-digit number of your color selection to replace XX in the item number.*

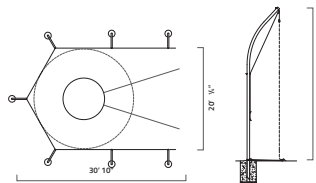
**HIGH SCHOOL DISCUS CAGES**

- Aluminum poles: 2 7/8" outside diameter 6063-T6 (Ultimate-30ksi, Yield-25ksi) with rolled offset for safety
- Steel poles: 2 1/2" square A513 (Ultimate-42ksi, Yield-30ksi) with rolled offset for safety
- Nets: 180 lb break strength
- Net height: 13' 6"
- Meets NFHS specifications
- 5 Year Warranty

6 POLE DESIGN



7 POLE DESIGN



**ALUMINUM CAGE**

8010	6-Pole Cage
8010CXX	6-Pole Cage, Custom Color
80102	Barrier Net
8020	7-Pole Cage
8020CXX	7-Pole Cage, Custom Color
80202A	Barrier Net
8021	7-Pole Cage with Rear Door Access
8021CXX	7-Pole Cage with Rear Door Access, Custom Color
80212	Barrier Net with Rear Door Access

**STEEL CAGE**

8030	6-Pole Cage
80302	Barrier Net

**BRUTUS CAGE**

- For high wind areas that need extra strength discus cages
- Made of Hammer Cage strength 4" outside diameter aluminum poles
- Meets NFHS specifications
- 5 Year Warranty

9010	6 Pole High School Cage
9010CXX	6 Pole High School Cage with Custom Color
9020	7 Pole High School Cage
9020CXX	7 Pole High School Cage with Custom Color
9021	7 Pole High School Cage, Rear Door Access
9021CXX	7 Pole High School Cage, Rear Door Access, Custom Color

## DISCUS, SHOT, & INDOOR CAGES



### HIGH SCHOOL PORTABLE DISCUS CAGE

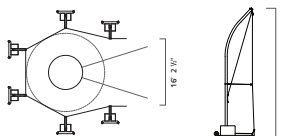
- Designed for set up and removal as needed
- Poles: (6) 6063-T6 aluminum net poles
- 13' 6" Net: #504 knotless nylon netting with 180 lb break strength
- Base: A500 Grade B steel equipped with wheels. To be weighted with sand or water filled jugs.
- 5 gallon jugs with gray vinyl covers included. Covers available in other colors or with custom graphics for an additional charge.
- **5 Year Warranty**

732220

Cage

732220CXXYY

Cage with Custom Color



### NCAA PORTABLE INDOOR CAGE

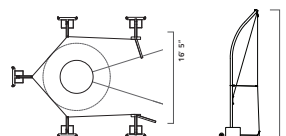
- Designed for set up and removal as needed
- Poles: (5) 6063-T6 aluminum net poles
- 13' 2" Net: #42A knotless nylon netting with 561 lb break strength
- Doors: repositionable with wired front design for longer life
- Base: A500 Grade B steel equipped with wheels. To be weighted with sand or water filled jugs.
- 5 gallon jugs with gray vinyl covers included. Covers available in other colors or with custom graphics for an additional charge.
- **Meets NCAA specifications**
- **5 Year Warranty**

732250

Cage

732250CXXYY

Cage with Custom Color



### CUSTOMIZABLE

\*To specify color with order, use the two-digit number of your color selection to replace XX and YY in the item number.

Pole Color (XX)



Vinyl Color (YY)

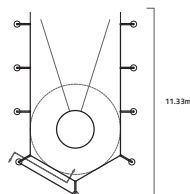


### WORLD ATHLETICS ALUMINUM DISCUS CAGE

- Poles: (9) 6063-T6 aluminum net poles
- 6m Net: Weather treated nylon 6 net with 340 lb break strength
- Rear door access net standard
- Rear net support tubes prevent net sag
- 18" hinged net arms secure net at all poles
- **Meets NCAA and World Athletics Specifications**
- **5 Year Warranty**

732145

Cage



### INTERNATIONAL PORTABLE DISCUS CAGE

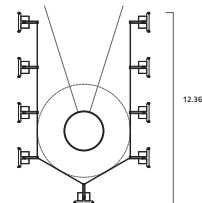
- Designed for set up and removal as needed
- Poles: (9) 6063-T6 aluminum net poles
- 5.1m Net: Weather treated #42A knotless net with 340 lb break strength
- Base: A500 Grade B steel equipped with wheels. To be weighted with sand or water filled jugs.
- 5 gallon jugs with gray vinyl covers included. Covers available in other colors or with custom graphics for an additional charge.
- **5 Year Warranty**

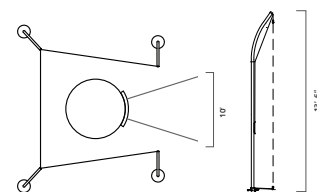
732240

Cage

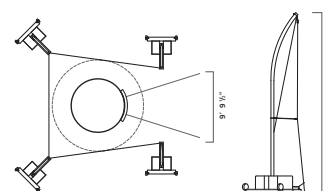
732240CXXYY

Cage with Custom Color





SHOT CAGE



PORTABLE SHOT CAGE

### SHOT CAGE

- Poles: (4) 6063-T6 aluminum or A513 steel
- 13' 6" Net: Weather treated nylon 6 net with 180 lb break strength
- 18" hinged net arms secure net at front two poles with ground stakes used at back poles
- **5 Year Warranty**

**805** Steel Cage

**8050** Aluminum Cage

**8050CXX** Aluminum Cage with Custom Color

### PORTABLE SHOT CAGE

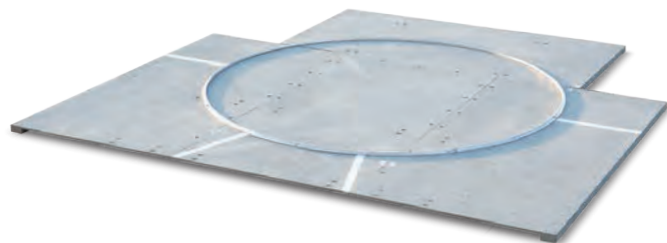
- Designed for set up and removal as needed
- Poles: (4) 6063-T6 aluminum net poles
- 13' 6" Net: #42A knotless nylon netting with 180 lb break strength
- Base: A500 Grade B steel equipped with wheels. To be weighted with sand or water filled jugs.
- 5 gallon jugs with gray vinyl covers included. Covers available in other colors or with custom graphics for an additional charge.
- **5 Year Warranty**

**732260** Cage

**732260CXXYY** Cage with Custom Color



**On all Gill Cages  
Call for Details.**



### PORTABLE DISCUS PLATFORM

- Wood platform with aluminum circle
- Constructed of 1/2" marine grade plywood with pressure treated 2' x 5' and 2' x 6' lumber
- Platform breaks down into eight pieces for storage space of 8' x 4'
- Weighs in excess of 400 lb
- Gray marine coat finish

**3710**

## CIRCLES & TOEBOARDS



**BEST SELLER!**

### ALUMINUM CIRCLES

- Four sections of 1" x 3/4" extruded aluminum angle
- Designed to be cast into concrete
- Discus circle can also be mounted to surface
- Compatible with toeboards 358, 363
- *Meets NFHS, NCAA and World Athletics specifications*

**369** Shot/Hammer Circle

**370** Discus Circle



### ALUMINUM CIRCLES WITH 2" ANGLE PROFILE

- Two sections of 2" x 2" extruded aluminum angle
- Designed to be cast into concrete
- Compatible with toeboards 358, 363
- *Meets NFHS, NCAA and World Athletics specifications*

**374** Shot/Hammer Circle

**375** Discus Circle



PROFILE FOR  
369, 370 & 372



PROFILE FOR  
371 & 373



PROFILE FOR  
374 & 375



364 with 373



### ALUMINUM SHOT CIRCLE

- Three sections of 1" x 3/4" extruded aluminum angle
- Designed to be mounted on top of concrete surface
- Anchor bolts included
- Compatible with toeboards 359, 364
- *Meets NFHS specifications*

**372**



### POWDER COATED STEEL DISCUS CIRCLE

- Three sections of 1/4" x 1 1/2" flat powder coated steel
- Designed to be mounted on top of concrete surface
- Anchor bolts included
- *Meets NFHS specifications*

**371**



**BEST SELLER!**

### POWDER COATED STEEL SHOT CIRCLE

- Four sections of 1/4" x 1 1/2" flat powder coated steel
- Designed to be mounted on top of concrete surface
- Anchor bolts included
- Compatible with toeboards 359, 364
- *Meets NFHS specifications*

**373**



### HAMMER CONVERSION CIRCLE

- Converts a discus ring into a hammer ring
- 7 interlocking sections of white PVC plastic
- *Meets NFHS, NCAA and World Athletics specifications, World Athletics certified*





**3622** 7 Piece System





### ALUMINUM CIRCLES WITH CROSS BRACING

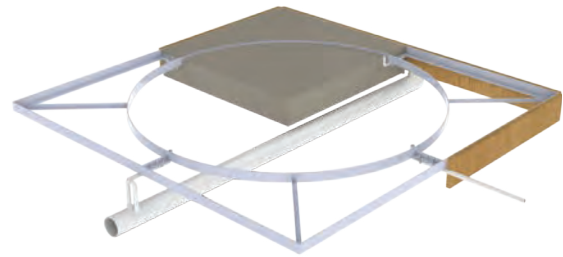
- Two sections of 1/4" x 3" extruded aluminum with welded bracing
- Bolt together to maintain form during in-ground installation
- Hardware included
- Compatible with toeboards 358, 363
- Meets NFHS, NCAA and World Athletics specifications, World Athletics certified

366	Shot/Hammer Circle	
366C04	Shot/Hammer Circle; White	
367	Discus Circle	
367C04	Discus Circle; White	

### ALUMINUM CIRCLE FORMS

- Four sections of 2" x 3" aluminum angle
- Bolt together form for in-ground installation
- Aluminum exterior bracing creates a strong frame
- Center open for smooth concrete pour and crack-resistant finish
- Inner circle is 1/4" x 3" flat aluminum bar
- Compatible with toeboards 358, 363
- Meets NFHS, NCAA and World Athletics specifications

3741	Shot/Hammer Circle Form
3751	Discus Circle Form



### SYNTHETIC SHOT TOEBOARD FOR DEPRESSED PAD

- Molded low density polyethylene designed for 3/4" depressed surface
- Compatible with circles 366, 369, 374, 3741
- Meets NFHS, NCAA and World Athletics specifications

358

### SYNTHETIC SHOT TOEBOARD FOR LEVEL PAD

- Molded low density polyethylene designed for surface mount shot circles
- Compatible with circles 372, 373
- Meets NFHS specifications

359



### ALUMINUM SHOT TOEBOARD FOR DEPRESSED PAD

- Cast aluminum designed for a 3/4" depressed surface
- Compatible with circles 366, 369, 374, 3741
- Meets NFHS, NCAA and World Athletics specifications, World Athletics certified

363

### ALUMINUM SHOT TOEBOARD FOR LEVEL PAD

- Cast aluminum designed for surface mount shot circles
- Compatible with circles 372, 373
- Meets NFHS specifications

364



### SYNTHETIC PLUGS

- Keeps debris and standing water out of throwing circles
- Constructed of 3/4" thick rubber and made to fit snug inside depressed circles
- Plugs come in sections for easier handling

37001	Shot Circle Plug
37002	Discus Circle Plug



SHOWN: 368 Throw Circle (1)  
3680 toeboard (1)  
All items sold separately

### INDOOR SHOT/WEIGHT THROW CIRCLE

- Constructed of 3/4" plywood with steel hinges and handles
- Foldaway handles for easy handling and storage
- Laminated weather proofed marine plywood toeboard (sold separately)
- Optional three piece 3/4" 7-ply birch plywood throwing surface (sold separately, not shown)
- Meets NFHS, NCAA and World Athletics specifications

368	Indoor Shot/Weight Throw Circle
3680	Wood Shot Toeboard for Indoor Circle
3681	Shot Throwing Surface

## TAKE-OFF BOARDS & CURBING

### PREPARE FOR TAKE-OFF WITH GILL BOARDS



#### ADJUSTABLE TAKE-OFF BOARD SYSTEMS

With the Gill Adjustable Take-Off Board Systems you get ease of installation, ease of use and dependable peak performance.

Gill Take-Off Board systems are the easiest and fastest boards to install in the market. **Complete system** comes with installation tray, adjustable folded aluminum base, reversible long lasting take-off board and foul board, and functional blanking lid ready to accept track surfacing.

- 8" take-off board and 4" foul board creates 12" system
- Exclusive easy-adjust leveling system for both horizontal and vertical axis
- Composite for longer lifespan
- Composite boards made of Polyboard®, an environmentally friendly, waterproof material that will not split or crack while offering jumpers great grip
- *Meets NFHS, NCAA and World Athletics specifications*

43505 Complete NCAA System

43515 Complete World Athletic System

43525 Complete 12" Take-Off Board and Tray

439 1 lb Plasticine Brick - Yellow

P435007 Replacement 4" NCAA Foul Board

P435107 Replacement 4" World Athletics Foul Board

P435005 Replacement 8" Take-Off Board

P435205 Replacement 12" Take-Off Board

#### ADJUSTABLE 8" TAKE-OFF BOARD SYSTEMS

- Complete system: Installation tray, aluminum leveling board and reversible take-off board
- Composite for longer lifespan
- Composite boards made of Polyboard®, an environmentally friendly, waterproof material that will not split or crack while offering jumpers great grip
- Blanking lid sold separately
- *Meets NFHS and NCAA specifications*

#### BEST SELLER!

4445 Complete Standard 8" Take-Off Board System

44421 Blanking Lid Assembly

44405 Replacement Take-Off Board







851A

### INTERNATIONAL TRACK CURBING


- Heavy gauge aluminum design features upscale fluted dome-shaped top
- Curbing sections are notched at one end to allow easy drop in or removal of section
- Curbing supported by 1/2" tall ribbed feet for unencumbered drainage
- Optional pin kit available to keep curbing from shifting on track
- Permanent installation includes two anchor pins for every 20' section
- *Meets NFHS, NCAA and World Athletics specifications, World Athletics certified*



### NON-PERMANENT INSTALLATION CURBING

851A	Plain	
852A	Anodized	
852P	Powder Coated	
851P	Base Pins (12)	

### PERMANENT INSTALLATION CURBING

853A	Plain	
854A	Anodized	
854P	Powder Coated	

### CUSTOMIZABLE



\*Gray and Black powder coat available in Gloss or Flat



441TS

### 19.5" TAKE-OFF BOARD SYSTEM

- Complete System: Installation tray, aluminum base board, and reversible take-off board
- Composite for longer lifespan
- Composite boards made of Polyboard®, an environmentally friendly, waterproof material that will not split or crack while offering jumpers great grip
- *Meets NFHS specifications*

441TS	Complete HS System
4410S	Replacement 19 1/2" Take-Off Board



### CONVERSION BOARD

- Convert a Gill 19 1/2" take-off board system to an 8" system
- Includes 8" composite take-off board, black vultrak, and baseboard

441C

## VAULT BOXES

**BEST SELLER!**

### ALUMINUM VAULT BOX

- Welded aluminum construction
- Reinforced backstop for prolonged life
- Meets NFHS, NCAA and World Athletics specifications, World Athletics certified

502 



### ALUMINUM VAULT BOX LID

- Compatible with all Gill vault boxes
- Reinforced with two 1/2" angled vertical supports to prevent sagging
- 50201: Recessed design to accommodate 1/2" (12mm) track surface
- 50202: Flush design with no added track surface

50201 Lid-Recessed Mount

50202 Lid-Flush Mount

### STEEL VAULT BOX

- Twelve gauge steel with fold and weld construction
- Flanged edges and flared sides for secure installation
- Finished with durable white powder coat
- Meets NFHS, NCAA and World Athletics specifications, World Athletics certified

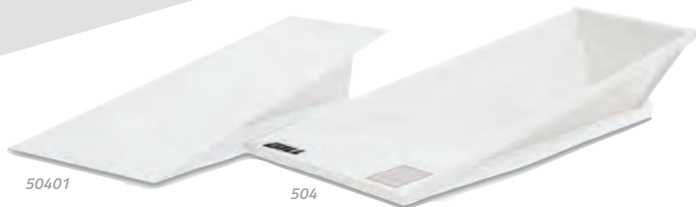
500 



### UNIVERSAL VAULT BOX LID

- Compatible with all Gill vault boxes
- Constructed of 11 gauge hot rolled steel
- Features anti-slip designed surface
- Finished with durable white powder coat

503



### STAINLESS STEEL VAULT BOX AND LID

- Box: Stainless steel alloy fold and weld construction for corrosion resistance
- Lid: 12 gauge 304 stainless steel plate with 2 angled vertical supports to prevent sag
- Lid: Recessed design to accommodate 1/2" (12mm) track surface
- Lid intended for use with stainless steel vault box
- Meets NFHS and NCAA specifications

504 Vault Box

50401 Vault Box Lid

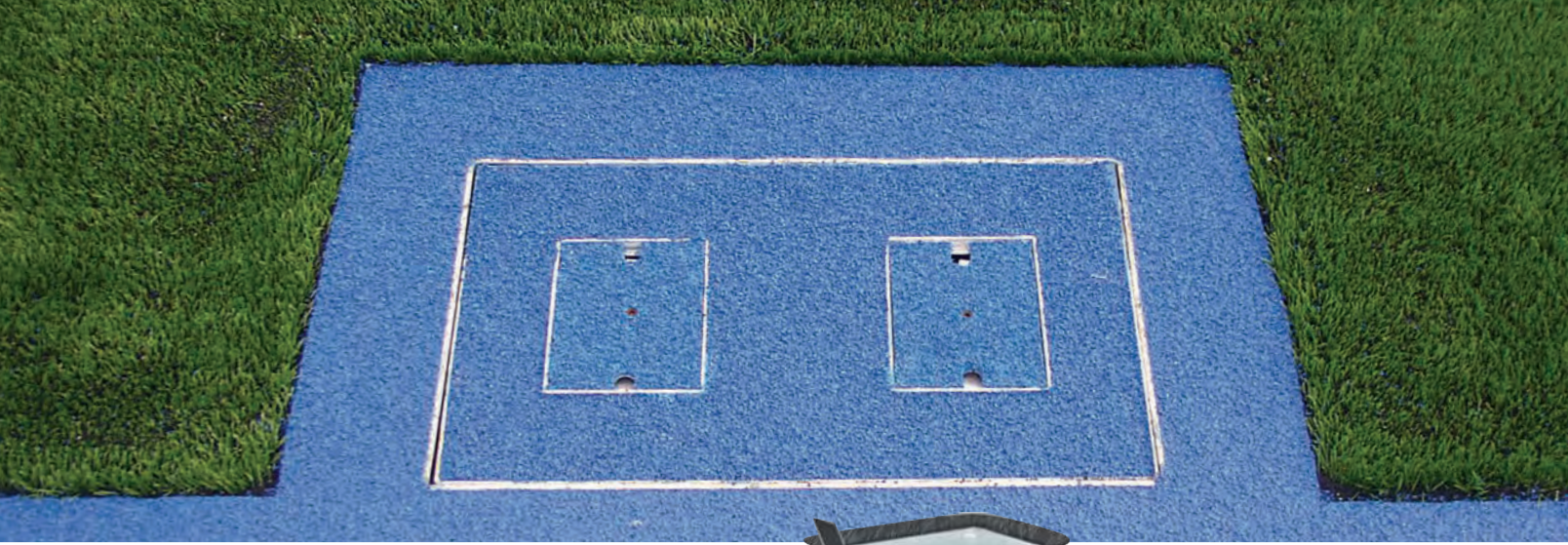
### CAST ALUMINUM VAULT BOX

- 100% cast aluminum construction with a wall thickness of 3/8"
- Standard durable white powder coat finish; Orange powder coat option available
- Inside corners rounded for unhindered pole rotation
- Guaranteed against cracking or warping
- Meets NFHS, NCAA and World Athletics specifications, World Athletics certified

505 White 

505C05 Orange 





# VERSACOM BOXES

## CONNECTING IT ALL TOGETHER

The VersaCom Box provides a junction for electricity and cable hookups. This box can be put in virtually any location around performance areas of varying surfaces. The open bottom of the VersaCom Box provides adequate drainage and conduit entry, while the hand holes in the cover allow easy access.

- Divider plates in full size version, provided to help keep electrical equipment segregated
- Main box structure is made of 1/4" thick folded aluminum
- Lid is constructed of 1/4" aluminum plates for maximum support and durability

The VersaCom Box - Synthetic Version allows material to be bonded or poured onto the top of the lid to match the surrounding surface.

The VersaCom Box - Turf Version features a supplied aluminum top to allow artificial turf to be glued on the jobsite, and is tethered to the box. This top is reinforced with multiple aluminum plates for maximum strength and durability. Factory installed turf infill retention brushes keep infill out of the box.



**SOLD SEPARATELY**

### VERSACOM RISER

The VersaCom Riser has the same dimensions as a full-size VersaCom Box. The riser attaches to the bottom creating a box that is twice as deep.

F90010 Versacom Riser

VERSACOM BOXES		FULL SIZE 30" L x 18" W x 14" D	HALF SIZE 15" L x 18" W x 14" D
SYNTHETIC VERSIONS	Synthetic	F910	F930
TURF VERSION	Turf	F960	F970

## SAND PIT FORMS & COVERS

### Sand pit forms hold more than just sand, they hold value.

With four different options of Sand Catcher locations and two practical Sand Catcher Cover options, you can design the horizontal jump facility that will perfectly meet your needs.

No matter which combination you choose; with the Gill Functional-Form, you can rest assured it's the finest product (with the easiest installation) available.

**Choose from one of two Sand Catcher Cover systems:** traditional grate and mat or Gill (exclusive) Recessed Lid. When you consider the main function of a Sand Catcher system is not to catch sand but to store it, the Recessed Lid system is rapidly becoming the choice of facilities worldwide, as it is designed to receive track surfacing to match your track facility. When coupled with the 730148 Aluminum Sand Pit Cover, a complete logical design emerges for your world class jumps facility.

**Choose from one of four sand catcher locations:** no sides, two sides, two sides and back, or all four sides. Choosing Sand Catchers on the sides will cut unnecessary costs and eliminate potential trip hazards, providing more than ample storage space for overflow sand.

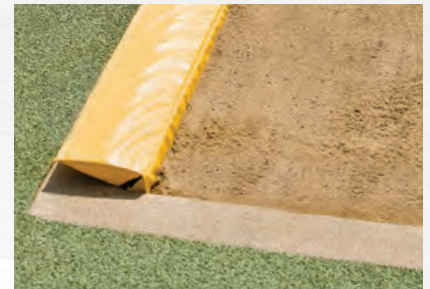
### FORM WITH RECESSED CATCHERS



### FORM WITH GRATE & MAT CATCHERS



### FORM WITH NO CATCHERS



730 Perimeter Padding sold separately

4 SIDES	25' L	F46225
	28' L	F46228
	31' L	F46231
3 SIDES	24' L	F46124
	27' L	F46127
	30' L	F46130
2 SIDES	23' L	F46023
	26' L	F46026
	29' L	F46029

4 SIDES	25' L	F44225
	28' L	F44228
	31' L	F44231
3 SIDES	24' L	F44124
	27' L	F44127
	30' L	F44130
2 SIDES	23' L	F44023
	26' L	F44026
	29' L	F44029

LEDGE	23' L	F42023
	26' L	F42026
	29' L	F42029

ALL FORMS ARE 9' 8" WIDE

FAST INSTALLATION

\*\*Track surface not included

### PERIMETER PADDING SYSTEM

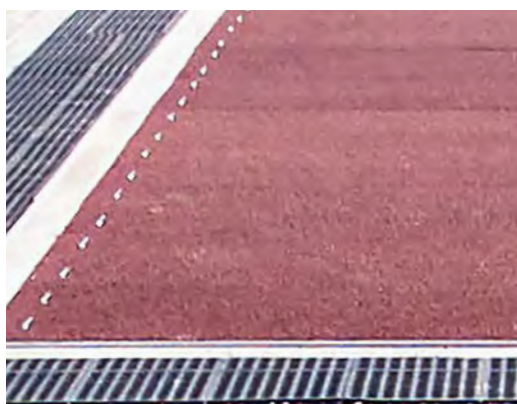
- Greatly reduce possibility of injury caused by impact with sand pit edging
- Modular pads install on any sand pit quickly and conveniently
- Critical location of pads is along sides of sand pit
- Each pad is 36" long

730



### RECESSED SAND CATCHER COVER PANELS

- Designed for 1/2" (12mm) track surface
- Constructed of 1/8" aluminum sheet metal
- Standard unit measures 18" x 36" and requires a ledge around perimeter to rest on
- Special lengths available between 18" and 35" long



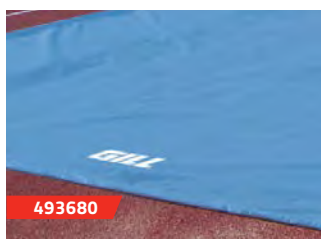
### LJ/TJ ALUMINUM SAND PIT COVER

- Each panel made from 9.5" x 1.75" x .125" aluminum planking framed with 2 3/8" x 1 1/2" x 3/16" aluminum angle
- Panels have four flush mount handles
- Recessed design for 1/2" (12mm) track surface

730148      \$62/sa ft

### READY-FIT ALUMINUM SAND PIT COVERS

F44023C	23' Cover
F44124C	24' Cover
F44225C	25' Cover
F44026C	26' Cover
F44127C	27' Cover
F44228C	28' Cover
F44029C	29' Cover
F44130C	30' Cover
F44231C	31' Cover



### BALLASTED LJ/TJ SAND PIT COVERS

- Exclusive Vipol Matrix mesh material or solid vinyl polyester
- Anchoring system: Vinyl wrapped galvanized steel chain perimeter
- Ballasted pit covers are custom sized and sold by the square foot (no returns)
- Optional 5' x 5' multi-color graphic available
- Dimension certification form must be submitted with order

493680	Mesh Vinyl	
493682	Solid Vinyl	
4936	Graphic Option	\$994.00

### COLORS



**MORE  
COLORS  
AVAILABLE!**

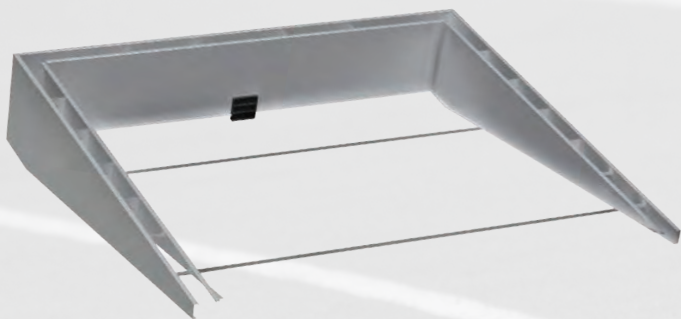
*Additional charge applies.  
(Gray is standard.)*

### LJ/TJ SAND PIT COVERS

- Keep your sand pit clean and dry with solid vinyl sand pit covers or choose mesh if rain is not an issue
- Constructed of vinyl coated woven polyester
- Anchoring system: Bags filled with sand placed in pouches to weigh cover down
- Optional 5' x 5' multi-color graphic available
- Graphic worksheet and vector artwork must be provided

730147	Mesh 11' 9" x 25' 6"
730147L	Mesh 11' 9" x 31' 6"
730147V	Vinyl 11' 9" x 25' 6"
730147VL	Vinyl 11' 9" x 31' 6"
9453	Graphic Option

## STEEPLECHASE



### SAVE MONEY WITH VALUEPACKS!

#### VALUEPACK - SURFACE MOUNT

Package includes:

- F600 Steeplechase Water Jump Form
- 740144 Steeplechase Water Jump Barrier-surface mount version

VPF600

#### FUNCTIONAL-FORM STEEPLECHASE WATER JUMP SYSTEMS

Gill Athletics has greatly simplified the installation of steeplechase water jump reservoirs with these Functional-Form systems. With the Functional-Form, installation precision is ensured to meet NFHS, NCAA and World Athletics specifications. Structure is fabricated of specially folded  $\frac{1}{8}$ " aluminum to maximize strength and includes designed inner wall supports that allow the concrete to flow through and set evenly.

- F600: Compatible with 740144 water jump barrier
- F610: Compatible with 740134 water jump barrier
- Both models compatible with 730146 aluminum water jump cover
- Both models come standard with valve option: installed front wall valve to be connected with an outgoing pipe to the drain source
- *Meets NFHS, NCAA and World Athletics specifications*

F600 *Surface Mount Form*

F610 *Ground Sleeve Form*

#### VALUEPACK - GROUND SLEEVE

Package includes:

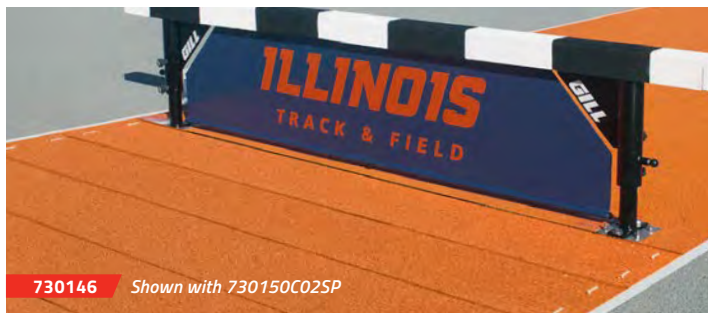
- F610 Steeplechase Water Jump Form with integrated ground sleeves
- 740134 Steeplechase Water Jump Barrier-ground sleeve version

VPF610

#### WATER JUMP COVERS

- Each panel made from 9.5" x 1.75" x .125" aluminum planking framed with heavy duty aluminum angle
- Panels have four flush mount handles
- Recessed design for  $\frac{1}{2}$ " (12mm) track surface
- Understructure supported with 4" x 2" aluminum beams

730146



730146 *Shown with 730150C02SP*



#### MESH WATER JUMP BARRIER SEALS

- Add color and design to your steeplechase water jump
- Lightweight design will ease water barrier height change

740145202 *Royal Blue*

740145203 *Red*

740145204 *White*

740145209 *Gray*

740145212 *Black*

740145204SP *White Mesh with Graphics*

#### COLORS



#### STEEPLECHASE WATER JUMP BARRIERS

- Barrier beam is 4" x 4" square steel tubing with synthetic track material
- Pull pin design makes barrier height change a snap
- Welded gusset adds needed strength support to the beam
- Adjustable to three heights: 30", 33", 36"
- Aluminum water jump barrier seal available
- *Meets NFHS, NCAA and World Athletics specifications*
- *Surface mount barrier is World Athletics certified*
- *5 Year Limited Warranty*

740134 *Water Jump Barrier with Ground Sleeves*

740144 *Water Jump Barrier with Surface Mount*

730150CXX *Aluminum Barrier Seal*

730150CXXSP *Aluminum Barrier Seal w/ Graphics*

#### COLORS





OFFICIAL EQUIPMENT SUPPLIER TO THE  
NCAA TRACK & FIELD CHAMPIONSHIPS

**BEST SELLER!**



### STEEPLECHASE BARRIER WITH DROP DOWN WHEELS

- 5" x 5" Barrier beam is constructed with aluminum extrusion and synthetic track material
- Wheels easily set and retract with foot engaged levers
- Pin pull design allows for simple barrier height adjustment
- Welded gusset adds needed strength support to the beam
- Adjustable to three heights: 30", 33", 36"
- Meets NFHS, NCAA and World Athletics specifications, World Athletics certified
- 5 Year Limited Warranty

740150	1 x 5m Barriers, 3 x 4m (4)	
740150131	4m Barrier; 13' Width	
740150161	5m Barrier; 16' 5" Width	



### STEEPLECHASE BARRIER

- 5" x 5" Barrier beam is constructed with aluminum extrusion and synthetic track material
- Pin pull design allows for simple barrier height adjustment
- Welded gusset adds needed strength support to the beam
- Adjustable to three heights: 30", 33", 36"
- Optional wheel kit for manual addition of wheels for transportation
- Meets NFHS, NCAA and World Athletics specifications, World Athletics certified
- 5 Year Limited Warranty

740140	1 x 5m Barriers, 3 x 4m (4)	
740140131	4m Barrier; 13' Width	
740140161	5m Barrier; 16' 5" Width	
74014050	Wheels (4)	



On all Steeplechase Barriers  
Call for Details.



### 6' TRAINING BARRIER

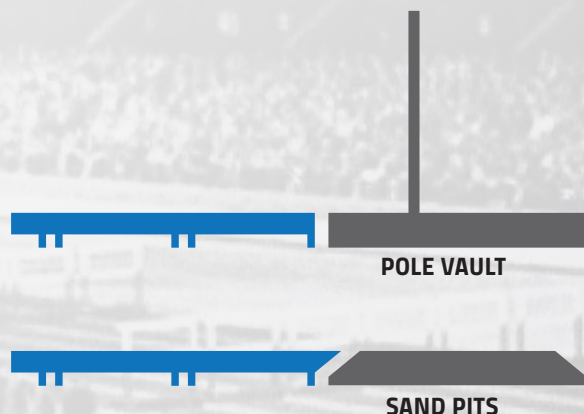
740140061	6' Training Steeplechase Barrier
740150061	6' Training Barrier with Drop Down Wheels

## RAISED RUNWAYS

In the past, these types of runway systems have been priced upwards to \$75k! You can now have this product at a fraction of that price. The Gill Raised Runway allows for the flexibility to design runways that will accommodate the pole vault, long jump and triple jump for all levels of competition and practice.

The basic unit is an 8' x 4' general runway section. Specialized sections incorporate a vault box or take-off board trays and blanking lids. The construction of each section is welded aluminum, with ½" plywood decking. Track surfacing is not included, so you can have your preference on surfacing.

Adjunct products for the Raised Runway include the Soft Shell Sand Pit Form for the long and triple jump (sand not included), and a pole vault pit elevating system.



### CALL TODAY!

LET US HELP YOU PIECE TOGETHER THE **RAISED RUNWAY** SYSTEM THAT BEST FITS YOUR NEEDS.



### CUSTOMIZABLE RUNWAY

#### Powder Coat



\*Gray and Black powder coat available in Gloss or Flat





# BALLSTOPS

## 10' - 40' TALL BALLSTOP SYSTEMS

- 10' use 2" Sch 40 2-3/8" aluminum tube-36# Netting
- 12', 15' and 20' use 4" diameter, 1/8" wall aluminum tube - #36 Netting
- 25' and 30' use 6" Sch 40 aluminum tube - #36 Netting
- 35' and 40' use 6" Sch 40 steel tube - #36 Netting
- All Poles 10'-40' have a vertical support cable for additional net support
- Ground sleeves included
- *All poles are powder coated in architectural black*
- *5 Year Warranty*

## HERE FOR YOU!

CALL TODAY AND WE'LL HELP GET THE **BALLSTOP** SYSTEM THAT BEST FITS YOUR FACILITY.



*On all Gill Ballstops  
Call for Details.*



## BALLSTOP NET RELEASE CLIPS

Designed to drop the protective netting in high winds before any pole or hardware failure occurs.

- Marine Grade HDPE material
- Designed to break and drop nets in high winds, 20' and shorter or 25' and taller
- Sold in pack of 10 clips

**739000** 20' Ballstops and shorter

**739001** 25' Ballstops and taller

## PORTABLE BALLSTOP SYSTEM

The Ballstop Systems were designed to be set up and removed as needed.

- 10' use 2" Sch 40 2-3/8" aluminum tube-36# Netting
- Poles have a vertical support cable for additional net support
- The portable system uses a platform base with wheels that is weighted down by four 5 gallon jugs (included)
- *All poles are now powder coated in architectural black.*
- *5 Year Warranty*



SINCE 1918

# GILL<sup>®</sup>

ATHLETICS

*In 1921 hall of fame athlete-turned-coach Harry L. Gill helped organize the first NCAA Track & Field Championship event. His team entered and won that inaugural national title. We are proud to honor Harry Gill's legacy and vision for the sport through Gill Athletics' role as the official equipment supplier of the NCAA Track & Field Championships.*



**C3**

**C4**

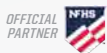


**C5**



# **CONTINUUM™**

**THE WORLD'S FASTEST HURDLES JUST STEPPED THINGS UP!**



OFFICIAL TRACK & FIELD  
EQUIPMENT SUPPLIER

*View the full team on pages 38-39*



601 Mercury Drive  
Champaign, IL 61822  
USA

OFFICIAL  
PARTNER



OFFICIAL TRACK & FIELD  
EQUIPMENT SUPPLIER

PRESORTED STD

U.S. Postage

**PAID**

LITANIA SPORTS  
GROUP

# ***FREEDOM TO FOCUS ON YOUR ATHLETES***



**2023 TRACK+FIELD CATALOG**

**GILLATHLETICS.COM**  
601 MERCURY DRIVE | CHAMPAIGN, IL 61822

**800.637.3090**  
SALES@GILLATHLETICS.COM