

# TRACK & FIELD 2021

**GILL**<sup>®</sup>  
ATHLETICS

800.637.3090

OFFICIAL  
PARTNER



OFFICIAL TRACK & FIELD  
EQUIPMENT SUPPLIER

[GILLATHLETICS.COM](http://GILLATHLETICS.COM)



***Quality.***  
***Commitment.***  
***Innovation.***

*Harry L. Gill*

***GILL***<sup>®</sup>  
***ATHLETICS***

*Since 1918, Gill Athletics<sup>®</sup> has empowered coaches with innovative equipment that develops track athletes and elevates the sport across the globe.*



# WHAT'S INSIDE



## 02 JUMPS

- 04 Landing Systems
- 10 Standards
- 14 Box Collars, Base Pads & Platforms
- 16 Raised Runways & Pit Garages
- 18 Crossbars & Accessories
- 22 Vaulting Poles
- 28 Vault Accessories

## 30 SPRINTS & HURDLES

- 32 Starting Blocks
- 36 Hurdles
- 39 Hurdle Accessories

## 40 THROWS

- 42 Discus
- 44 Hammers & Shots
- 46 Throw Accessories
- 48 Javelins
- 57 Implement Accessories

## 58 MEETS

- 60 Displays
- 62 Measuring Devices & Cameras
- 64 Track Accessories & Maintenance
- 70 Cross Country & Impact Tents

## 72 TRAINING

- 74 Plyometrics
- 76 Agility Training
- 78 Speed Development
- 81 Core Strength
- 82 Bodyweight Training
- 84 Weight Bars & Plates
- 86 Jump Training & Testing
- 88 Flexibility & Rehab

## 90 FACILITIES

- 92 Takeoff Boards & Curbing
- 94 Sand Pit Forms & Covers
- 96 Steeplechase
- 98 Vault Boxes & Implement Barriers
- 100 Circles & Toeboards
- 104 Hammer Cages
- 108 Discus Cages
- 112 Discus, Shot & Indoor Cages
- 114 VersaCom Boxes & Track Shelter
- 116 Ballstops

2021 Litanio Sports Group, Inc, Gill Athletics, PowerMax, Pacer are all registered trademarks of Gill Athletics, Inc. Gill Essentials, Maximus, SafetyMax, AGX, Pacer One, PacerFXV, Pacer Composite, Continuum, Fusion, Carbon 1, Hollowood Star, Orbiter, OTE, Tru-Flight, T2-Fiber, Tufmesh Plus, Duralife, are all trademarks of Gill Athletics, Inc. NCAA is a registered trademark of The National Collegiate Athletic Association.

## CHECK OUT OUR GREAT **NEW** PRODUCTS

Featured here and online at: [www.GILLATHLETICS.com](http://www.GILLATHLETICS.com) / **NewProducts**

Prices effective from October 1, 2020 through September 30, 2021

RAISE

THE

BAR







**LANDING  
SYSTEMS**



## LANDING SYSTEMS

For over 100 years, Gill Athletics has been the leader of innovation in the sport of track & field. Our pole vault and high jump landing systems are engineered by collegiate athletes, professionals, and coaches. We are honored that the NCAA® and NFHS® have both partnered with us as we work together to elevate each athlete's journey and deliver a first-class experience.

### DOUBLE FRONT SYSTEMS

Available on G4, G6, and AGX M4. Call for Details.



#### SIDE CARABINER CONNECTION:

Top Pad is connected to base pads with carabiner side attachments, eliminating any obstruction on top of the pit. This exclusive attention to detail provides an obstruction-free landing area with athletes' safety in mind.



#### OPTIMAL PIT ENTRY ANGLE:

An ASTM approved vault box collar changes the slope of the tri-slant area when vaulting poles rotate. Gill's thoughtful pit entry design accounts for the box collar's effect by featuring a vaulter friendly angle.



## GILL LANDING SYSTEMS FEATURES\*

### Top Pads

**EDGE-TO-EDGE TOP PAD:** Aesthetic and functional design eliminates spike contact with base units and unevenness at the edge of the pit. This Gill exclusive feature will increase the life of your new pit and improve safety near the edges.

**TUFMESH PLUS™ CASING:** Using exclusive 17 x 11 1000 denier material increases the life of your top pad and stands up to repeated use better than any other landing system.

**2" DURALIFE™ FOAM:** Soft and durable foam creates confidence in every practice. Coaches can teach with assurance because of this industry leading design.

**V-LOOP VINYL STRAP:** Designed to evenly distribute the force from the athlete's landing, V-Loop straps eliminate tears compared to traditionally designed pits that put undue stress on the seams.

**REVERSIBLE:** Extend the life of your pit, Gill's top pads are designed to use either side safely and easily.

### Vinyl Base Units

**ALL-VINYL BASE:** Exclusive to Gill landing systems, this unique design keeps water out of your pit better than traditional mesh top units. To extend the life of your pit you keep water out of the foam. Gill's all-vinyl design gets results.

**COMPLETE INTERCHANGEABILITY:** Reversible sections for maximum interchangeability. This adds years to the life of your pit by maximizing the usage and size of the athlete's landing area.

**QUADRUPLE DURALIFE LAYER FOAM:** Athletes need to know they are landing safely and comfortably. Gill's new QUADRUPLE Duralife foam is 25% softer than others yet with firmness necessary for the safest landings.

**DUAL COATED VINYL:** Evenly distributed 1000 x 1000 denier polyester fabric is bonded on both sides with 18oz knife-coated PVC vinyl. This exclusive fabric design eliminates vinyl delamination seen in other pits after years of use. This creates the most durable casing that is lighter than the other pits.

**STITCHING:** Gill's entire landing system is stitched with the industry's strongest 210 bonded polyester thread. Simply put, your new Gill pit comes triple stitched with the toughest thread in the industry to hold up to high volume practices.

**GRIP STRIP FASTENING SYSTEM:** A pit is safest when constructed as an integrated system. Gill's Grip Strip Fastening System will keep your base sections functioning as one unit season after season.

**ECO-SMART COMPRESS PACKS:** Gill Athletics cares about the environment and your budget. All landing systems are expertly packed and shipped utilizing Compress-Pack shipping, reducing freight volume lowering fuel consumption and shipping costs. Pits restore to original size and shape minutes after unpacking.

**12 YEAR WARRANTY:** A long-term warranty is only as dependable as the company standing behind it. And after 100 years, you can count on Gill to stand behind your landing system for years to come. If any failure occurs in the first 12 years, under normal use and care, we will repair or replace the damaged part. Essentials line includes 5 year warranty.

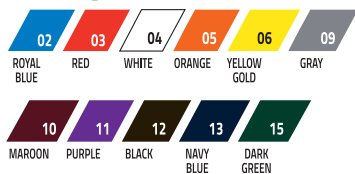
**CUSTOM COLOR AND GRAPHICS:** Choose from over 100 unique vinyl casing and top pad color combinations offered at NO EXTRA CHARGE! Select your vinyl casing (xx) and top pad (yy) color combination. Add distinction with multi-color graphics on the top pad, weather cover, or both.

\*Features May Exclude Essentials Systems

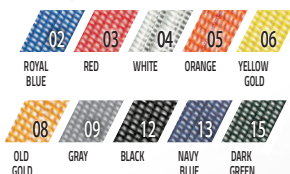


## CUSTOMIZABLE LANDING SYSTEMS

### Casing (XX)



### Top Pad (YY)



To specify color with order, use the two-digit number of your color selection to replace XX & YY in the item number.

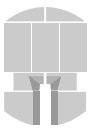
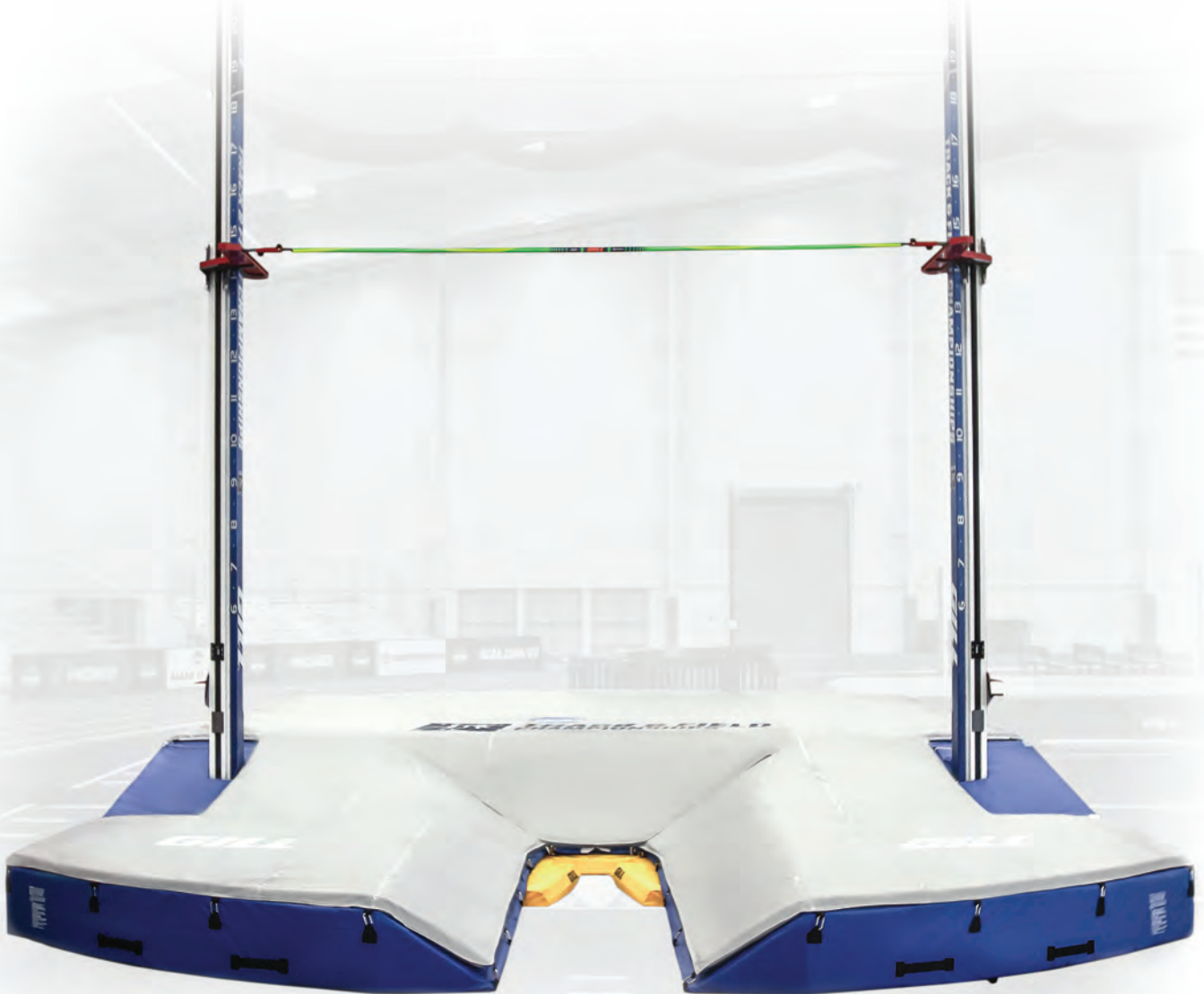
**NEW!** Build your own pit at [gillathletics.com](http://gillathletics.com)

### CUSTOM GRAPHIC PRINTING

Add logo or school name to any landing system top pad or weather cover. Multi-color graphic is screen printed on 5' x 5' area. **Vector artwork must be provided.**

9451	Top Pad Graphic	\$1130
9452	Weather Cover Graphic	\$1130

## POLE VAULT LANDING SYSTEMS



OFFICIAL EQUIPMENT SUPPLIER TO THE  
2021 TRACK & FIELD CHAMPIONSHIPS

### AGX M4 PV LANDING SYSTEM

- 21' 6" x 31' 2" x 32" // 6.55m x 9.50m x 0.81m
- 2" Top Pad
- 21" in back of the vault box
- Meets World Athletics, NCAA and NFHS specifications
- 12 year warranty

66817CXXYY Landing System  \$30105

6681702CXX Weather Cover \$2815

**CUSTOMIZE IT!**

MULTIPLE COLORS COMBINATIONS







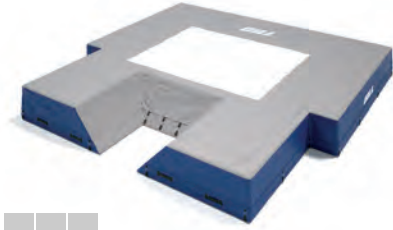
On all Gill Landing Systems\*  
Call for Details.

\*Excludes Essentials. 5 Year Warranty on Essentials.



## CUSTOMIZABLE SYSTEMS

See color charts on page 5 to replace  
the XX and YY in the item numbers.



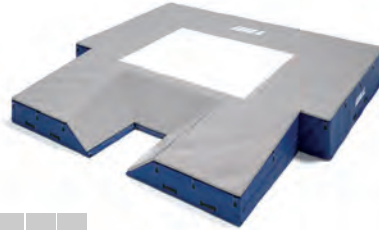
### ESSENTIALS™ PV LANDING SYSTEM

- 19' 9" x 20' 2" x 26" // 6.02m x 6.15m x 0.66m
- Skirted Mesh Top Holds Unit in Place
- Royal blue vinyl with gray top pad only
- Meets NFHS specifications
- 5 year warranty

653	Landing System	\$12350
65302	Weather Cover	\$1410

<b>VP300</b>	Essentials PV Valuepack	\$15605
--------------	-------------------------	---------

INCLUDED: Essentials PV System, Weather Cover, 7100 Essentials PV Standards, 61517CXX Base Pads, 523 Essentials PV Crossbar



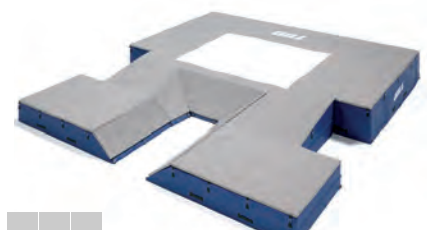
### S1 PV LANDING SYSTEM

- 20' x 20' 2.5" x 28" // 6.1m x 6.16m x 0.71m
- 2" Top Pad
- 16' 7" in back of the vault box
- Meets NFHS specifications
- 12 year warranty

65417CXXYY	Landing System	\$16295
6541702CXX	Weather Cover	\$1760

<b>VP65417CXXYY</b>	S1 PV Valuepack	\$20465
---------------------	-----------------	---------

INCLUDED: S1 PV System, Weather Cover, 77100 S4 PV Standards, 61517CXX Base Pads, 523 Essentials PV Crossbar



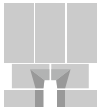
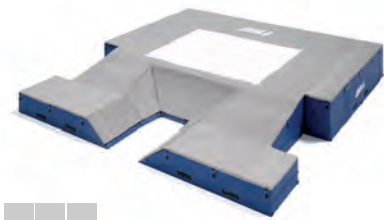
### S4 PV LANDING SYSTEM

- 21' 6" x 24' x 28" // 6.55m x 7.32m x 0.71m
- 2" Top Pad
- 16' 7" in back of the vault box
- Meets NFHS specifications
- 12 year warranty

65817CXXYY	Landing System	\$20245
6581702CXX	Weather Cover	\$2090

<b>VP65817CXXYY</b>	S4 PV Valuepack	\$24615
---------------------	-----------------	---------

INCLUDED: S4 PV System, Weather Cover, 77100 S4 PV Standards, 61517CXX Base Pads, 523 Essentials PV Crossbar



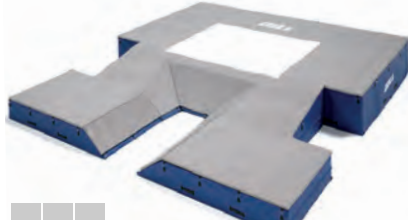
### G1 PV LANDING SYSTEM

- 20' x 21' 11" x 32" // 6.10m x 6.68m x 0.81m
- 2" Top Pad
- 16' 7" in back of the vault box
- Meets NCAA and NFHS specifications
- 12 year warranty

66217CXXYY	Landing System	\$20500
6621702CXX	Weather Cover	\$2145

<b>VP66217CXXYY</b>	G1 PV Valuepack	\$28265
---------------------	-----------------	---------

INCLUDED: G1 PV System, Weather Cover, 77200C12 G4 PV Standards, 61617CXX Base Pads, 526 Gill Collegiate PV Crossbar



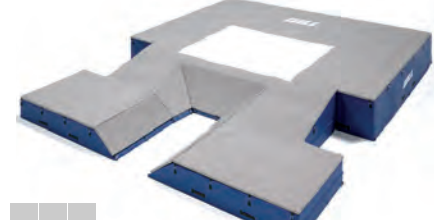
### G4 PV LANDING SYSTEM

- 21' 6" x 24' x 32" // 6.55m x 7.32m x 0.81m
- 2" Top Pad
- 16' 7" in back of the vault box
- Meets NCAA and NFHS specifications
- 12 year warranty

66317CXXYY	Landing System	\$22645
6631702CXX	Weather Cover	\$2350

<b>VP66317CXXYY</b>	G4 PV Valuepack	\$28265
---------------------	-----------------	---------

INCLUDED: G4 PV System, Weather Cover, 77200C12 G4 PV Standards, 61617CXX Base Pads, 526 Gill Collegiate PV Crossbar



### G6 PV LANDING SYSTEM

- 21' 6" x 27' x 32" // 6.55m x 8.23m x 0.81m
- 2" Top Pad
- 19' 7" in back of the vault box
- Meets NCAA and NFHS specifications
- 12 year warranty

66517CXXYY	Landing System	\$24980
6651702CXX	Weather Cover	\$2585

<b>VP66517CXXYY</b>	G6 PV Valuepack	\$28265
---------------------	-----------------	---------

INCLUDED: G6 PV System, Weather Cover, 77200C12 G4 PV Standards, 61617CXX Base Pads, 526 Gill Collegiate PV Crossbar



OFFICIAL TRACK & FIELD  
EQUIPMENT SUPPLIER


## HIGH JUMP LANDING SYSTEMS

**CUSTOMIZE IT!**  
SHOW YOUR SCHOOL PRIDE

### G4 HJ LANDING SYSTEM

- 20' x 13' 2" x 28" // 6.10m x 4.01m x 0.71m
- 2" Top pad
- Added safety cutout
- Meets World Athletics, NCAA and NFHS specifications
- 12 year warranty



64417CXXYY	Landing System		\$10655
6441702CXX	Weather Cover		\$1585




OFFICIAL EQUIPMENT SUPPLIER TO THE  
2021 TRACK & FIELD CHAMPIONSHIPS

### AGX M4 HJ LANDING SYSTEM

- 27' 2" x 13' 2" x 28" // 8.29m x 4.01m x 0.71m
- 2" Top pad
- Added safety cutout
- Meets World Athletics, NCAA and NFHS specifications
- 12 year warranty



64817CXXYY	Landing System		\$14090
6481702CXX	Weather Cover		\$1805



\*Matching customized landing zone Top Pad  
as shown available at additional price.





On all Gill Landing Systems\*  
Call for Details.

\*Excludes Essentials. 5 Year Warranty on Essentials.



## CUSTOMIZABLE SYSTEMS

See color charts on page 5 to replace the XX and YY in the item numbers.



### ESSENTIALS™ HJ LANDING SYSTEM

- 16' x 8' x 24" // 4.88m x 2.44m x 0.61m
- Skirted mesh top holds unit in place
- Royal blue vinyl with gray top pad only
- Meets NFHS specifications
- 5 year warranty

640A Landing System \$4430

640A02 Weather Cover \$697

VP405 Essentials HJ Valuepack \$5415

INCLUDED: Essentials HJ System, Weather Cover, 700 Essentials HJ Standards, 522 Essentials HJ Crossbar



### S1 HJ LANDING SYSTEM

- 16'6" x 8' x 26" // 5.03m x 2.44m x 0.66m
- 2" Top pad
- Meets NFHS specifications
- 12 year warranty

64117CXXYY Landing System \$6145

6411702CXX Weather Cover \$934

VP64117CXXYY S1 HJ Valuepack \$7710

INCLUDED: S1 HJ System, Weather Cover, 78105 S4 HJ Standards, 522 Essentials HJ Crossbar



### S4 HJ LANDING SYSTEM

- 16' 6" x 10' x 26" // 5.03m x 3.05m x 0.66m
- 2" Top pad
- Added safety cutout
- Meets NCAA and NFHS specifications
- 12 year warranty

64217CXXYY Landing System \$7760

6421702CXX Weather Cover \$1180

VP64217CXXYY S4 HJ Valuepack \$9515

INCLUDED: S4 HJ System, Weather Cover, 78105 S4 HJ Standards, 522 Essentials HJ Crossbar



### G1 HJ LANDING SYSTEM

- 18' x 10' x 26" // 5.49m x 3.05m x 0.66m
- 2" Top pad
- Added safety cutout
- Meets NCAA and NFHS specifications
- 12 year warranty

64617CXXYY Landing System \$8780

6461702CXX Weather Cover \$1355

VP64617CXXYY G1 HJ Valuepack \$11305

INCLUDED: G1 HJ System, Weather Cover, 78200C12 G4 HJ Standards, 525 Gill Collegiate HJ Crossbar



OFFICIAL TRACK & FIELD EQUIPMENT SUPPLIER

## POLE VAULT STANDARDS

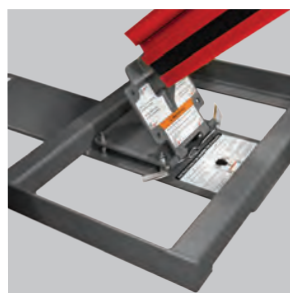
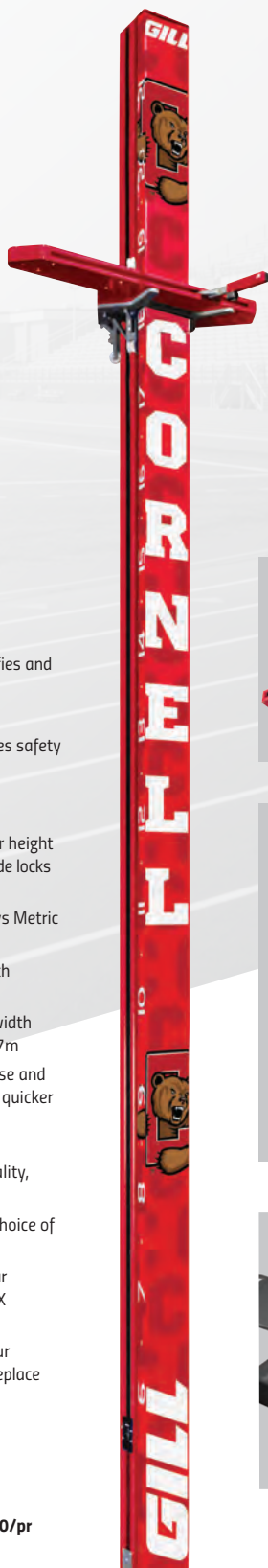


OFFICIAL EQUIPMENT SUPPLIER TO THE  
2021 TRACK & FIELD CHAMPIONSHIPS

### AGX M4 POLE VAULT STANDARDS

- Dual hand crank system simplifies and speeds up height transitions
- Height range from 6' 6" to 21'
- Exclusive 2" safety pad increases safety of athletes and reduces vaulting pole damage
- Dual positional locking system; Practice Mode creates quick bar height changes while Competition Mode locks in peg height during jumps
- Internal measuring tape displays Metric and English units
- Quick hand crank crossbar depth adjustment from 0cm to 80cm
- Exclusive customizable offset width between pins from 4.30m-4.37m
- Steel base for stability during use and Easy-Port hinge technology for quicker location movement
- Strong aluminum profile increases aesthetics, functionality, and customization
- Customize 2" safety pad with choice of color and graphics
- Use the two-digit number of your vinyl color selection to replace XX in the item number
- Use the two-digit number of your powder coat color selection to replace YY in the item number
- Meets NFHS, NCAA, and World Athletics specifications
- 10 year warranty

740110CXXYYSP \$21380/pr



MANUAL DEPTH  
ADJUSTMENTS

### AGX M2 POLE VAULT STANDARDS

- Includes high-end features from the AGX M4 Standard except with manual depth adjustments
- Meets NFHS, NCAA, and World Athletics specifications
- 10 year warranty

77300CXXYYSP \$13520/pr

#### Vinyl



#### Powder Coat



\*Gray and Black powder coat available in Gloss or Flat



On all Gill Standards®  
Call for Details.

\*Excludes Essentials. 5 Year Warranty on Essentials.



77200C02

#### G4 POLE VAULT STANDARDS

- Constructed of heavy duty aluminum uprights and risers with custom glide parts for smooth operation
- Weighted steel base includes leveling feet and wheels for easy mobility
- Clamping mechanism pulls upright and riser together to hold desired height
- Height adjustment: 10' 3" to 21' with adjustable height readout window display
- Reads both English and Metric measurements
- 55mm bar rest pins and 8 base anchors included
- Meets NFHS, NCAA, and World Athletics specifications, World Athletics certified
- 10 year warranty

77200CXX \$4545/pr 



#### S4 POLE VAULT STANDARDS

- Constructed of heavy duty aluminum uprights and risers with custom glide parts for smooth operation
- Weighted steel base includes wheels for easy mobility
- Clamping mechanism pulls upright and riser together to hold desired height
- Height adjustment: 7' to 18'
- Reads both English and Metric measurements
- Meets NFHS and NCAA specifications
- 10 year warranty

77100 \$1845/pr



#### ESSENTIALS™ POLE VAULT STANDARDS

- Full steel tubing construction gives added strength
- Height adjustment: 6' to 16'
- Reads both English and Metric measurements
- Upright detaches from base rails for improved storage
- Wide stance base for added stability
- 75mm bar rest pins and 8 base anchors included
- Meets NFHS specifications
- 5 year warranty

7100 \$1130/pr



#### PV STANDARD UPRIGHT PAD

- Protects competitors, pole, and standards from harm
- Fits snug around the standard facing the inside of the pit
- Open back allows for setting of height and tightening of knobs
- High density foam in vinyl casing
- Customizable Color

731109CXX \$405/ea



71252 Shown

#### OFFSET EXTENSION

- 71252 adds additional 2' to Gill standards: 77100 and 77200CXX
- 71253 adds additional 4' to Gill standards: 77100 and 77200CXX
- Fits any standards with 1.25" square offsets
- Comes in safety orange color

71252 \$113/pr

71253 \$248/pr



## HIGH JUMP STANDARDS



OFFICIAL EQUIPMENT SUPPLIER TO THE  
2021 TRACK & FIELD CHAMPIONSHIPS

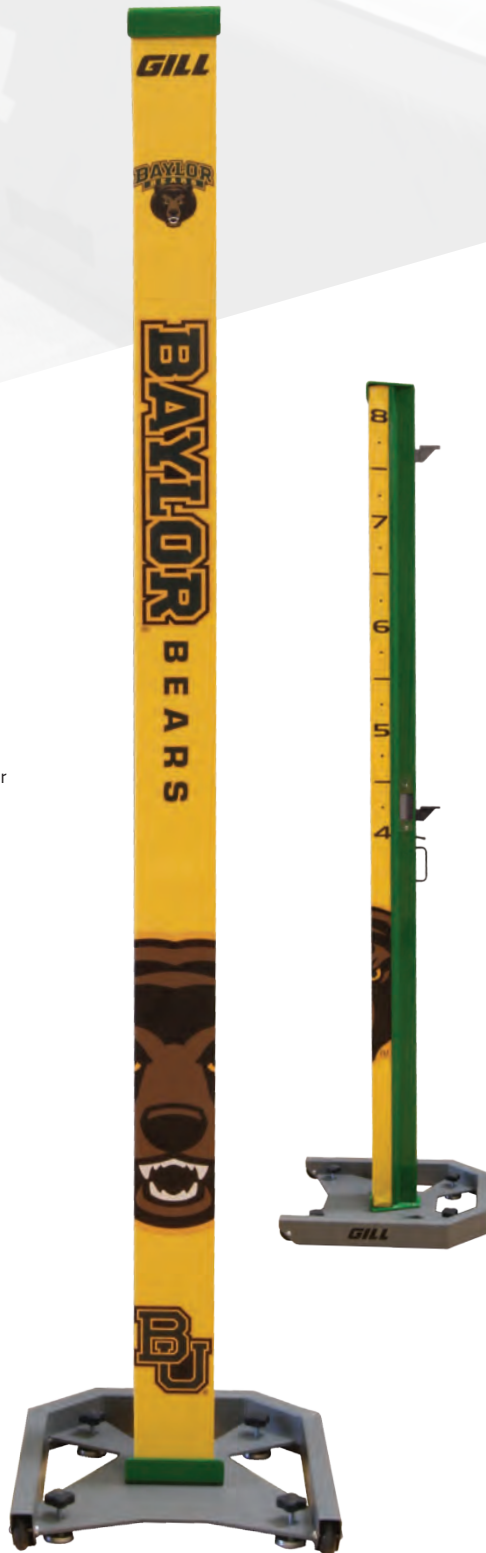
### AGX M4 HIGH JUMP STANDARDS

- Simple height adjustments with unique thumb button and handle assist
- Choose your team's powder coat color for complete customization
- Customize exclusive 2" safety pad with choice of color and graphics
- High-visible English or Metric unit height indicator display for fans, coaches, and athletes
- Eye-level height indicator color coordinated with dual bar rest system
- Exclusive steel powder coated weighted base with wheels for increased stability and easy transportation
- Height range from 1' to 8' 3"
- Use the two-digit number of your vinyl color selection to replace XX in the item number
- Use the two-digit number of your powder coat color selection to replace YY in the item number
- Meets NFHS, NCAA, and World Athletics specifications
- 10 year warranty

740120CXXYYSP



\$2325/pr



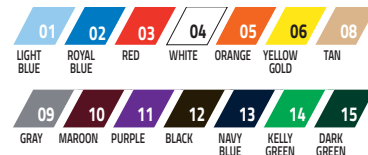
### M4 HIGH JUMP BASE PADS

Specifically designed for AGX M4 High Jump Standards.

- Use the two-digit number of your vinyl color selection to replace XX in the item number

708CXX \$385/pr

#### Vinyl



#### Powder Coat

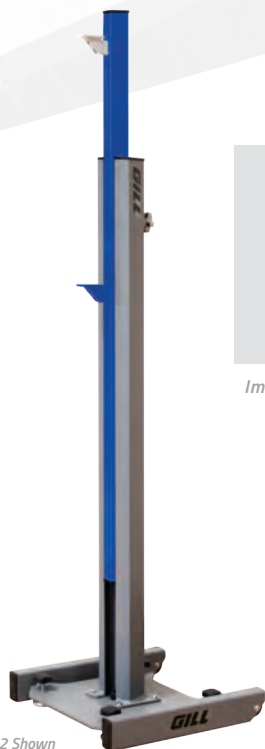


\*Gray and Black powder coat available in Gloss or Flat



On all Gill Standards\*  
Call for Details.

\*Excludes Essentials. 5 Year Warranty on Essentials.



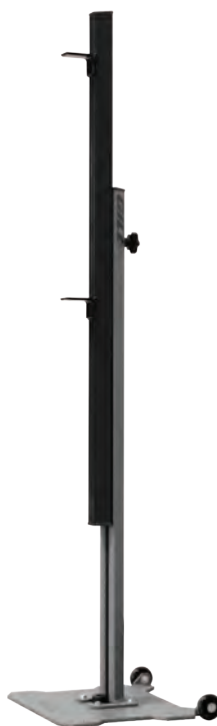
Improved Clamping Mechanism

78200C02 Shown

### G4 HIGH JUMP STANDARDS

- Constructed of heavy duty aluminum uprights and risers with custom glide parts for smooth operation
- Weighted steel base includes wheels for easy mobility and leveling feet
- Clamping mechanism pulls upright and riser together to hold desired height
- Height adjustment: 2'8" - 8'4" with adjustable height readout window display
- Reads both English and Metric measurements.
- Meets NFHS, NCAA and World Athletics specifications
- 10 year warranty

78200XX \$1410/pr



### S4 HIGH JUMP STANDARDS

- Constructed of heavy duty aluminum uprights and risers with custom glide parts for smooth operation
- Weighted steel base includes wheels for easy mobility
- Clamping mechanism pulls upright and riser together to hold desired height
- Height adjustment: 2' - 7'4"
- Reads both English and Metric measurements
- Meets NFHS and NCAA specifications
- 10 year warranty

78105 \$796/pr



### ESSENTIALS™ HIGH JUMP STANDARDS

- Square steel construction with durable black powder coat finish
- Weighted base includes wheels for easy mobility
- Height adjustment: 2' to 8'
- Reads both English and Metric measurements
- Meets NFHS and NCAA specifications
- 5 year warranty

700 Standards \$383/pr

### HIGH JUMP MULTI-BAR REST ATTACHMENT

- Eliminates need for time wasting raising and lowering of standards at practice
- Designed to fit most high jump standards
- Six bar rest pads at 3" increments
- 1 3/4" x 1 3/4" openings with a 22" overall length

71254 \$74/pr



### HIGH JUMP STANDARD BASE PADS

- Provides additional safety during high jump event
- 2" thick foam pad encased in yellow vinyl

707 \$241/pr





## LANDING SYSTEM ACCESSORIES



2534



OFFICIAL EQUIPMENT SUPPLIER TO THE  
2021 TRACK & FIELD CHAMPIONSHIPS

### PIT STOP

- 1/4" Powder coated steel plates
- 1/2" spikes on base secures the plate from shifting
- Pole Vault Pit Stop includes 2 base plates with a connector panel
- High Jump Pit Stop includes 1 base plate
- Compatible with any pole vault or high jump pit

2534 Pole Vault \$582

2535 High Jump \$239



2535



PATENT NO. 8444531

### SAFETYMAX+™ VAULT BOX COLLAR



- Compatible with any style of landing system
- Spike Plate to reduce collar from slipping
- Complies with ASTM standard F2949
- Meets the 2014 NCAA and 2015 NFHS rule

719 SafetyMax+ Vault Box Collar \$637

71904 Spike Plate Kit \$214



### VAULT PERIMETER PAD

- High school rule requires covering over all exposed hard surfaces surrounding the PV landing area
- 4' x 8' pad is 2" thick high density foam

716 \$306



### STANDARD BASE PADS

- Fits 28" tall Gill systems and all standards with center-mounted uprights

61517CXX \$1125/pr



### LANDING SYSTEM TIE-DOWN KIT

- Decrease the chances of pit 'flying' away
- Increase safety and security of your pits

7081 With Concrete Anchors \$55

7082 With Grass Anchors \$55



### ANGLED BASE PADS

- Fits 32" tall Gill systems and all standards with center-mounted uprights
- Adjustable measurement scale on top of pad
- Meets World Athletics specifications

61617CXX \$1840/pr



### SLOPED MANUAL AGX BASE PADS

- Specifically designed for 77300CXXYYSP Manual AGX M4 Pole Vault Standards.

61817CXX \$1925/pr



### SLOPED AGX M4 BASE PADS

- Specifically designed for 740110CXXYYSP AGX M4 Pole Vault Standards.

61717CXX \$1595/pr



### CUSTOMIZABLE BASE PADS

See color charts on page 5 to replace the XX and YY in the item numbers.



### ALUMINUM PIT CART

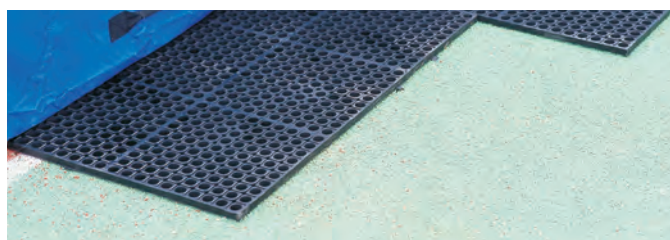
- Deck of cart measures 5' x 10'
- Constructed of quality aluminum planking
- Pneumatic caster wheels have a 12" diameter for easy travel over smooth and rough surfaces
- Deck height is optimal 19"

768      \$2675

### WOOD DECK PIT CART

- Deck of cart measures 4' x 8'
- Constructed of MDO exterior plywood for improved weather resistance
- Pneumatic caster wheels have a 12" diameter for easy travel over smooth and rough surfaces
- Deck height is 16"

767      \$1330



### PLATFORMS FOR LANDING SYSTEMS

- Support PV and HJ pits above the ground to prevent water damage
- Corrosion resistant aluminum or corrosion resistant rubber construction
- Consist of individual, easy to carry and convenient to store pallets

#### Aluminum

733641	Fits 64117 High Jump System	\$2990
733642	Fits 64217 High Jump System	\$4120
733644	Fits 64417 High Jump System	\$6365
733646	Fits 64617 High Jump System	\$4420
733648	Fits 64817 High Jump System	\$6740
733654	Fits 65417 Pole Vault System	\$7640
733662	Fits 66217 Pole Vault System	\$8165
733663	Fits 66317 and 65817 Pole Vault System	\$8950
733665	Fits 66517 Pole Vault System	\$10525
733668	Fits 66817 Pole Vault System	\$11090

#### Rubber

734641	Fits 64117 High Jump System	\$1890
734642	Fits 64217 High Jump System	\$2270
734644	Fits 64417 High Jump System	\$4490
734646	Fits 64617 High Jump System	\$2445
734648	Fits 64817 High Jump System	\$5035
734654	Fits 65417 Pole Vault System	\$5045
734662	Fits 66217 Pole Vault System	\$5195
734663	Fits 66317 and 65817 Pole Vault System	\$6265
734665	Fits 66517 Pole Vault System	\$7430
734668	Fits 66517 Pole Vault System	\$8005



### WATER SHED INSERT

- Guaranteed to increase the life of your HJ and PV sites
- Prevents water pooling on your pit which destroys your foam

709      \$82

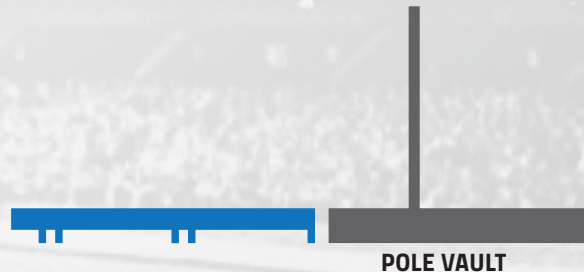


## RAISED RUNWAYS

In the past, these types of runway systems have been priced upwards to \$75k! You can now have this product at a fraction of that price. The Gill Raised Runway allows for the flexibility to design runways that will accommodate the pole vault, long jump and triple jump for all levels of competition and practice.

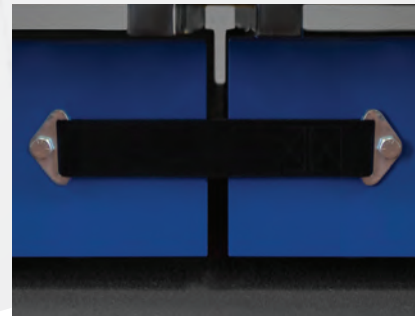
The basic unit is an 8' x 4' general runway section. Specialized sections incorporate a vault box or take-off board trays and blanking lids. The construction of each section is welded aluminum, with ½" plywood decking. Track surfacing is not included, so you can have your preference on surfacing.

Adjunct products for the Raised Runway include the Soft Shell Sand Pit Form for the long and triple jump (sand not included), and a pole vault pit elevating system.



### CALL TODAY!

LET US HELP YOU PIECE TOGETHER THE **RAISED RUNWAY** SYSTEM THAT BEST FITS YOUR NEEDS.



### CUSTOMIZABLE RUNWAY

#### Powder Coat

01	02	03	04	05	06	07	08
LIGHT BLUE	ROYAL BLUE	RED	WHITE	ORANGE	YELLOW GOLD	SILVER	OLD GOLD
09	10	11	12	13	14	15	
GRAY	MAROON	PURPLE	BLACK	NAVY BLUE	KELLY GREEN	DARK GREEN	

\*Gray and Black powder coat available in Gloss or Flat

Gill Raised Runways are used at:  
Kent State University, Marshall University,  
Towson University, and Vanderbilt University.

# PIT GARAGES



## PIT GARAGES

- Protect your PV or HJ investment from the elements
- Keep rain, snow, and vandals away
- Easily moves on and off position with the help of a few people
- Use the two-digit number of your color selection to replace XX in the item number

<b>881018CXX</b>	21' X 10' 6" High Jump Pits or Smaller	<b>\$9710</b>
<b>881425CXX</b>	28' 5" X 13' 8" High Jump Pits or Smaller	<b>\$14540</b>
<b>882120CXX</b>	20' 3" X 21' 11" Pole Vault Pits or Smaller	<b>\$15190</b>
<b>883022CXX</b>	22' X 32' Pole Vault Pits or Smaller	<b>\$18660</b>
<b>GILLINSTALLHJG</b>	High Jump Pit Garage Factory Installation	<b>\$4065</b>
<b>GILLSTALLPVG</b>	Pole Vault Pit Garage Factory Installation	<b>\$5215</b>

- Snow Load Kits available for areas with inclement weather

## COLORS



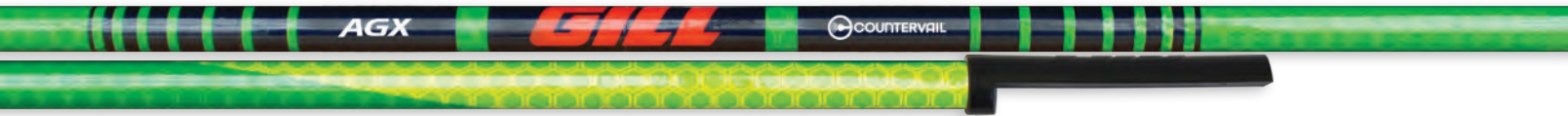
POLE VAULT



HIGH JUMP



## CROSSBARS



### AGX™ COUNTERVAIL CROSSBARS

- Includes high-end features of the AGX Crossbar with added Countervail™ Vibration Cancelling Technology
- Countervail strengthens the crossbar creating minimal sag
- Dampens 40% quicker than other crossbars
- Meets NFHS, NCAA and World Athletics specifications, World Athletics certified



535	High Jump	\$328
536	Pole Vault	\$335



### AGX™ CROSSBARS

- Exclusive half moon profile ends lower the center of gravity of the bar
- Heaviest crossbar the rules allow
- Shorter, more stable, end pieces redesigned for improved performance
- Features durable thick-walled pulltruded fiberglass rod
- Meets NFHS, NCAA and World Athletics specifications, World Athletics certified



INSPECT CROSSBARS FOR VISIBLE AND CONCEALED DAMAGE BEFORE ACCEPTING DELIVERY

CROSSBARS ARE NOT GUARANTEED AGAINST BREAKAGE

529	High Jump	\$148
530	Pole Vault	\$154



### GILL® COLLEGIATE CROSSBARS

- Features durable thick-walled pulltruded fiberglass rod
- Minimum sag
- Order sets of three to help offset expensive shipping costs
- Meets NFHS, NCAA and World Athletics specifications, World Athletics certified

525	High Jump	\$108/ea
5253	High Jump (3)	\$312/set
526	Pole Vault	\$108/ea
5263	Pole Vault (3)	\$312/set



### ESSENTIALS™ CROSSBARS

- Features durable pulltruded fiberglass rod
- Excellent choice for high school competitions
- Order sets of three to help offset expensive shipping costs
- Meets NFHS specifications

522	High Jump	\$71/ea
5223	High Jump (3)	\$205/set
523	Pole Vault	\$71/ea
5233	Pole Vault (3)	\$205/set

### 3-PIECE CROSSBARS

- Crossbar kit that ships by UPS instead of truck
- Reduced shipping charges
- Can be shipped UPS overnight
- Utilizes same durable thick-walled pulltruded fiberglass as Collegiate Crossbars
- *Meets NFHS and NCAA specifications*



531 High Jump \$151

532 Pole Vault \$151



E73708



### PV/HJ MEASURING STICK

- 59" tall aluminum measuring stick brings laser readout closer to eye level
- Use for both High Jump and Pole Vault events
- Simple to use: Utilize viewfinder to line up crossbar and press the button
- Measure in either English or Metric units
- Minimum measurement is 1.54m (5' 1/2"), No maximum measurement

E73708 Stick and Laser \$1085



### PUTTER UPPER

- Simplest crossbar placer ever made
- Fits over the end of any vaulting pole

710390 \$21



### TELESCOPING CROSSBAR PLACER

- Facilitate easy placement of crossbars at all heights
- Telescoping pole extends 6' to 12' in 6" increments
- Thumb mechanism allows for quick adjustment

950 \$141



### ELASTIC CROSSBAND

- Training crossbar for PV and HJ
- Bright fluorescent orange elastic tubing
- 1" diameter foam sections

528 \$23

TEAMPACER.COM

 **PACER**<sup>®</sup>

ONE *FXV* COMPOSITE

LIVE  
TO  
VAULT







***POLES***

# ONE



 **1** YEAR  
WARRANTY

**ON EVERY PACER POLE**

**QUICK  
SHIP** 

**AVAILABLE FOR ALL PACER  
FIBERGLASS POLES**

*A full-line of vaulting poles designed for every vaulter, allowing smooth transition from pole to pole no matter the length, weight, or model. The ONLY vaulting pole with a 1 Year warranty.*

***From novice to elite, Pacer has you covered.***

# THE PACER® ADVANTAGE

The Pacer® ONE is a versatile, economical pole perfect for the beginning vaulter. Our design patterns create a “slow down” of the bend allowing more time to rotate into a vertical position. Available 9’ to 13’ in 10 lb increments, the Pacer ONE is sure to get your vaulters to the next level. 1 Year Warranty.



**9'**  
(2.75M)  
**\$281**

ITEM #	TEST WT	TIP
527527	60 lb	21
527532	70 lb	21
527536	80 lb	21
527541	90 lb	21
527545	100 lb	21

**10'**  
(3.10M)  
**\$310**

ITEM #	TEST WT	TIP
531032	70 lb	21
531036	80 lb	21
531041	90 lb	21
531045	100 lb	21
531050	110 lb	21
531054	120 lb	21
531059	130 lb	21

**10'6"**  
(3.20M)  
**\$331**

ITEM #	TEST WT	TIP
532532	70 lb	21
532536	80 lb	21
532541	90 lb	21
532545	100 lb	21
532550	110 lb	21
532554	120 lb	21
532559	130 lb	21
532563	140 lb	21

**11'**  
(3.35M)  
**\$350**

ITEM #	TEST WT	TIP
533536	80 lb	21
533541	90 lb	21
533545	100 lb	21
533550	110 lb	21
533554	120 lb	21
533559	130 lb	21
533563	140 lb	21
533568	150 lb	21

**11'6"**  
(3.51M)  
**\$362**

ITEM #	TEST WT	TIP
535541	90 lb	21
535545	100 lb	21
535550	110 lb	21
535554	120 lb	21
535559	130 lb	21
535563	140 lb	21
535568	150 lb	21

**12'**  
(3.66M)  
**\$374**

ITEM #	TEST WT	TIP
536041	90 lb	21
536045	100 lb	21
536050	110 lb	21
536054	120 lb	21
536059	130 lb	18
536063	140 lb	18
536068	150 lb	16
536073	160 lb	16

**12'6"**  
(3.81M)  
**\$392**

ITEM #	TEST WT	TIP
537545	100 lb	21
537550	110 lb	21
537554	120 lb	21
537559	130 lb	18
537563	140 lb	18
537568	150 lb	16
537573	160 lb	16
537577	170 lb	16

**13'**  
(3.96M)  
**\$409**

ITEM #	TEST WT	TIP
540050	110 lb	18
540054	120 lb	18
540059	130 lb	18
540063	140 lb	16
540068	150 lb	16
540073	160 lb	13
540077	170 lb	13
540082	180 lb	13

VAULTING POLES ARE NOT GUARANTEED AGAINST BREAKAGE

INSPECT VAULTING POLES FOR VISIBLE AND CONCEALED DAMAGE BEFORE ACCEPTING DELIVERY

### COMPETITION POLE TIPS

Tough, durable polyurethane for a softer plant and long lasting performance.



700002, 700004, 700005, 700007, 700010, 700013, 700016, 700018, and 700021 **\$12/ea**



# FXV



## 11' (3.35M)

**\$463**

ITEM #	TEST WT	TIP
733536	80 lb	21
733541	90 lb	21
733545	100 lb	21
733550	110 lb	21
733554	120 lb	21
733559	130 lb	21
733563	140 lb	18
733568	150 lb	18

## 12' (3.66M)

**\$496**

ITEM #	TEST WT	TIP
736045	100 lb	21
736047	105 lb	21
736050	110 lb	21
736052	115 lb	21
736054	120 lb	21
736057	125 lb	21
736059	130 lb	18
736061	135 lb	18
736063	140 lb	18
736066	145 lb	18
736068	150 lb	18
736070	155 lb	18
736073	160 lb	18

## 13' (3.96M)

**\$585**

ITEM #	TEST WT	TIP
740050	110 lb	18
740052	115 lb	18
740054	120 lb	18
740057	125 lb	18
740059	130 lb	18
740061	135 lb	18
740063	140 lb	16
740066	145 lb	16
740068	150 lb	16
740070	155 lb	16
740073	160 lb	13
740075	165 lb	13
740077	170 lb	13
740080	175 lb	13
740082	180 lb	10

## 11'6" (3.51M)

**\$477**

ITEM #	TEST WT	TIP
735041	90 lb	21
735045	100 lb	21
735050	110 lb	21
735054	120 lb	18
735059	130 lb	18
735063	140 lb	16
735068	150 lb	16

## 12'6" (3.81M)

**\$529**

ITEM #	TEST WT	TIP
737545	100 lb	21
737547	105 lb	21
737550	110 lb	21
737552	115 lb	18
737554	120 lb	18
737557	125 lb	18
737559	130 lb	18
737561	135 lb	18
737563	140 lb	16
737566	145 lb	16
737568	150 lb	16
737570	155 lb	16
737573	160 lb	16
737575	165 lb	16
737577	170 lb	16

## 13'6" (4.11M)

**\$618**

ITEM #	TEST WT	TIP
741554	120 lb	16
741557	125 lb	16
741559	130 lb	16
741561	135 lb	16
741563	140 lb	16
741566	145 lb	16
741568	150 lb	13
741570	155 lb	13
741573	160 lb	13
741575	165 lb	13
741577	170 lb	10
741580	175 lb	10

# THE PACER® ADVANTAGE

The Pacer® FXV vaulting pole is the flagship series of our Pacer line-up. With a design to perform well for all styles of jumpers, the lightweight s-glass is designed for smooth, consistent response as vaulters transition from pole to pole. The Pacer FXV is the perfect pole for greater heights and maximum PRs. Available 11' to 16'9" in 5 lb or 10lb increments. 1 Year Warranty.



**14'**  
(4.27M)  
**\$631**

ITEM #	TEST WT	TIP
742557	125 lb	16
742559	130 lb	16
742561	135 lb	13
742563	140 lb	13
742566	145 lb	13
742568	150 lb	13
742570	155 lb	13
742573	160 lb	13
742575	165 lb	10
742577	170 lb	10
742580	175 lb	7
742582	180 lb	7

**15'**  
(4.57M)  
**\$687**

ITEM #	TEST WT	TIP
746063	140 lb	10
746066	145 lb	10
746068	150 lb	10
746070	155 lb	10
746073	160 lb	10
746075	165 lb	7
746077	170 lb	7
746080	175 lb	7
746082	180 lb	5
746084	185 lb	5

**16'1**  
(4.90M)  
**\$810**

ITEM #	TEST WT	TIP
749073	160 lb	10
749075	165 lb	10
749077	170 lb	7
749080	175 lb	7
749082	180 lb	5
749084	185 lb	5
749086	190 lb	4
749088	195 lb	4
749091	200 lb	4

**14'6**  
(4.42M)  
**\$641**

ITEM #	TEST WT	TIP
744059	130 lb	13
744061	135 lb	13
744063	140 lb	10
744066	145 lb	10
744068	150 lb	10
744070	155 lb	10
744073	160 lb	10
744075	165 lb	10
744077	170 lb	7
744080	175 lb	7
744082	180 lb	7
744084	185 lb	7

**15'6**  
(4.72M)  
**\$766**

ITEM #	TEST WT	TIP
747068	150 lb	10
747070	155 lb	10
747073	160 lb	7
747075	165 lb	7
747077	170 lb	5
747080	175 lb	5
747082	180 lb	4
747084	185 lb	4
747086	190 lb	4
747088	195 lb	4

**16'5**  
(5.01M)  
**\$889**

ITEM #	TEST WT	TIP
750077	170 lb	7
750080	175 lb	7
750082	180 lb	7
750084	185 lb	5
750086	190 lb	5
750088	195 lb	4
750091	200 lb	4

**16'9**  
(5.11M)  
**\$945**

ITEM #	TEST WT	TIP
751084	185 lb	5
751086	190 lb	5
751088	195 lb	4
751091	200 lb	4
751093	205 lb	4

# COMPOSITE



**13'**  
(3.96M)

**\$608**

ITEM #	TEST WT	TIP
340050	110 lb	21
340052	115 lb	18
340054	120 lb	18
340057	125 lb	18
340059	130 lb	18
340061	135 lb	18
340063	140 lb	18
340066	145 lb	18
340068	150 lb	16
340070	155 lb	16
340073	160 lb	16

**14'**  
(4.27M)

**\$697**

ITEM #	TEST WT	TIP
342557	125 lb	16
342559	130 lb	16
342561	135 lb	16
342563	140 lb	16
342566	145 lb	16
342568	150 lb	13
342570	155 lb	13
342573	160 lb	13
342575	165 lb	13
342577	170 lb	13
342580	175 lb	13
342582	180 lb	10

**15'**  
(4.57M)

**\$845**

ITEM #	TEST WT	TIP
346063	140 lb	13
346066	145 lb	10
346068	150 lb	10
346070	155 lb	10
346073	160 lb	10
346075	165 lb	10
346077	170 lb	10
346080	175 lb	10
346082	180 lb	7
346084	185 lb	7
346086	190 lb	7

**13'6"**  
(4.11M)

**\$656**

ITEM #	TEST WT	TIP
341554	120 lb	18
341557	125 lb	18
341559	130 lb	18
341561	135 lb	16
341563	140 lb	16
341566	145 lb	16
341568	150 lb	16
341570	155 lb	16
341573	160 lb	13
341575	165 lb	13
341577	170 lb	13
341580	175 lb	13

**14'6"**  
(4.42M)

**\$739**

ITEM #	TEST WT	TIP
344059	130 lb	13
344061	135 lb	13
344063	140 lb	13
344066	145 lb	10
344068	150 lb	10
344070	155 lb	10
344073	160 lb	10
344075	165 lb	10
344077	170 lb	10
344080	175 lb	10
344082	180 lb	10
344084	185 lb	10
344086	190 lb	7
344088	195 lb	7

**15'6"**  
(4.72M)

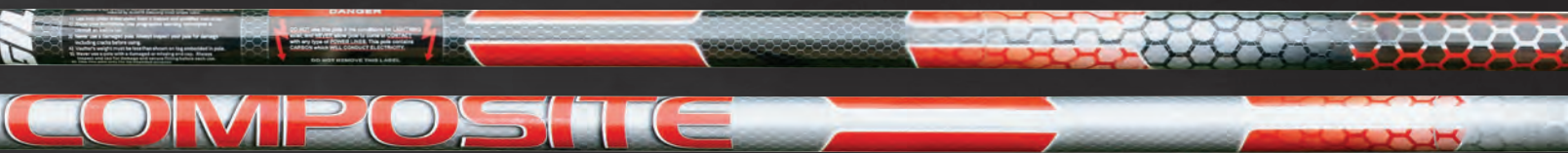
**\$888**

ITEM #	TEST WT	TIP
347068	150 lb	10
347080	155 lb	10
347073	160 lb	10
347075	165 lb	10
347077	170 lb	10
347080	175 lb	10
347082	180 lb	7
347084	185 lb	7
347086	190 lb	5
347088	195 lb	5



# THE PACER® ADVANTAGE

For advanced aggressive vaulters, the Pacer® COMPOSITE is the lightest pole on the market with increased tensile strength and superior energy return. The patent-pending design blends T2-Fiber™, S-Glass, and carbon fiber to create a robust and durable composite construction. The Pacer COMPOSITE is designed for vaulters to raise the bar. Available 13' to 16'9" in 5lb increments. 1 Year Warranty.



**16'1**  
(4.90M)  
**\$931**

ITEM #	TEST WT	TIP
349073	160 lb	10
349075	165 lb	10
349077	170 lb	10
349080	175 lb	10
349082	180 lb	7
349084	185 lb	7
349086	190 lb	5
349088	195 lb	5
349091	200 lb	5

**16'5**  
(5.01M)  
**\$1,005**

ITEM #	TEST WT	TIP
350077	170 lb	10
350080	175 lb	7
350082	180 lb	7
350084	185 lb	7
350086	190 lb	5
350088	195 lb	5
350091	200 lb	4
350093	205 lb	4
350095	210 lb	4

**16'9**  
(5.11M)  
**\$1,040**

ITEM #	TEST WT	TIP
351084	185 lb	5
351086	190 lb	5
351088	195 lb	4
351091	200 lb	4
351093	205 lb	4
351095	210 lb	4
351097	215 lb	2

**WE RAISED  
THE BAR SO  
YOU CAN TOO.**

Vaulting poles are not guaranteed against breakage.

Inspect vaulting poles for visible and concealed damage before accepting delivery.

### COMPETITION POLE TIPS

Tough, durable polyurethane for a softer plant and long lasting performance.



700002, 700004, 700005, 700007, 700010, 700013, 700016, 700018, and 700021 **\$12/ea**

## POLE BAGS & ACCESSORIES

### CUSTOM POLE BAG

- Customize for your school's personality!
- Holds up to five vaulting poles
- Shoulder strap for ease of transportation
- Heavy duty vinyl and leather reinforced ends for long life
- Made to fit 6" corrugated drain tube (not included)
- Use the two-digit number of your vinyl color selection (Page 10) to replace the XX in the item number

8008##CXX 10'-18' Custom Pole Bag \$562

\*Use two-digit number of desired pole bag length to replace '##' in part number. 10'-18' lengths available.



### PACER DELUXE TEAM POLE BAG

- Holds up to 20 vaulting poles (10 sleeved, 10 unsleeved)
- Heavy duty nylon outer with a dense inner 1/2" thick foam fused with a hard plastic shell for strength
- 10 durable sewn-in pole sleeves
- Soft rubber handles and seams

700714 14' Team Pole Bag \$776

700715 15' Team Pole Bag \$866

700716 16' Team Pole Bag \$934

700717 17' Team Pole Bag \$979

### ESSENTIALS™ POLE BAG

- Holds up to five vaulting poles
- Heavy duty polyester for long life
- Maximum length is 15'
- Made to fit 6" corrugated drain tube (not included)

800801 \$124

### ELITE POLE BAG

- Holds up to five vaulting poles
- Heavy duty vinyl and leather reinforced ends for long life
- Adjustable from 14' 6" to 17' 6"
- Made to fit 6" corrugated drain tube (not included)

800802 \$225



### VAULT TRAINER SYSTEM

- Unique device for beginner and intermediate vaulters
- Allows athlete to acclimate the body to positions occurring during peak vault height
- Strengthens muscle groups for effective push off
- Helps to coordinate grip and pole positions while rotating around pole for push off

TA190 \$349

### PACER® GIZMO

- Practice vaulting while safely on the ground
- Allows athlete to mimic complex movements that occur in the air while firmly on your feet
- Three cord system to accommodate your specific level of strength and coordination
- Vault specific training device designed to take you to the next level

700231 Small Grip \$269

700232 Large Grip \$269





**CHALK STAND**

- Store chalk during practice and competition
- Lightweight stand features a wide opening for hands, a pocket for extra chalk, and rungs for hanging accessories or resting vaulting poles

<b>WE305</b>	<i>Chalk Stand</i>	<b>\$291</b>
<b>700250</b>	<i>1 lb Sports Chalk</i>	<b>\$18</b>



**PORTABLE POLE RACK**

- Convenient way to store and protect your poles during meets and practice
- Free standing pole rack made of heavy duty steel with durable powder coat finish

<b>725</b>	<b>\$182</b>
------------	--------------



**INTERNATIONAL POLE CART**

- Built to hold all the vaulting poles you own
- Made of sturdy steel with high end design
- Dual purposed wheels switch from swivel to locked position in a snap

<b>733180</b>	<i>Cart</i>	<b>\$1050</b>
<b>735</b>	<i>Tow Bar Kit</i>	<b>\$162</b>



**VAULT BOX POWER PUMP**

- Battery powered by 3 "D" cell batteries (not included)
- Pump fully submersible
- Empties a water filled vault box in less than five minutes

<b>72001</b>	<b>\$150</b>
--------------	--------------



**GRRRIP PLUS LOTION & SPRAY**

- Scientifically formulated mixture developed to enhance hand-grip up to 75% better
- Fluid mixes with natural skin oils to create a moisture barrier yet still allows the skin to breathe
- More convenient and cleaner than chalk

<b>700253</b>	<i>Lotion</i>	<b>\$13</b>
<b>700254</b>	<i>Spray</i>	<b>\$13</b>



**POLE VAULT GRIP TAPE**

- 12 ½ yard roll of colored adhesive tape
- 1 ½" width

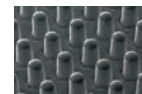
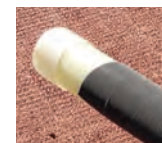
<b>700259</b>	<i>White (15 yds)</i>	<b>\$9.50</b>
<b>700260</b>	<i>Red</i>	<b>\$9.50</b>
<b>700261</b>	<i>Maroon</i>	<b>\$9.50</b>
<b>700262</b>	<i>Gold</i>	<b>\$9.50</b>
<b>700263</b>	<i>Green</i>	<b>\$9.50</b>
<b>700264</b>	<i>Royal</i>	<b>\$9.50</b>
<b>700265</b>	<i>Purple</i>	<b>\$9.50</b>
<b>700266</b>	<i>Black</i>	<b>\$9.50</b>
<b>700267</b>	<i>Pink</i>	<b>\$9.50</b>



**GRAPHIC POLE VAULT GRIP TAPE**

- 20 yard roll of adhesive design tape
- Camo/flag designs come in 2" width
- Jolly Roger design comes in 1" width

<b>700273</b>	<i>USA Flag</i>	<b>\$19</b>
<b>700271</b>	<i>Pink Camo</i>	<b>\$19</b>
<b>700272</b>	<i>Winter Camo</i>	<b>\$19</b>
<b>700274</b>	<i>Jolly Roger</i>	<b>\$19</b>



Microscopic detail of grip technology.

**NINJA ELITE POLE VAULT GRIP TAPE**

- Lab-designed with thousands of gripping 'fingers'
- Grip lighter and hold tighter
- No additional substances needed (chalk, sticky spray, etc)
- Slip resistant, vibration dampening and easy release properties
- Water and oil resistant

<b>700281</b>	<i>9' x 1"</i>	<b>\$23</b>
---------------	----------------	-------------



SEE  
BEYOND  
OBSTACLES



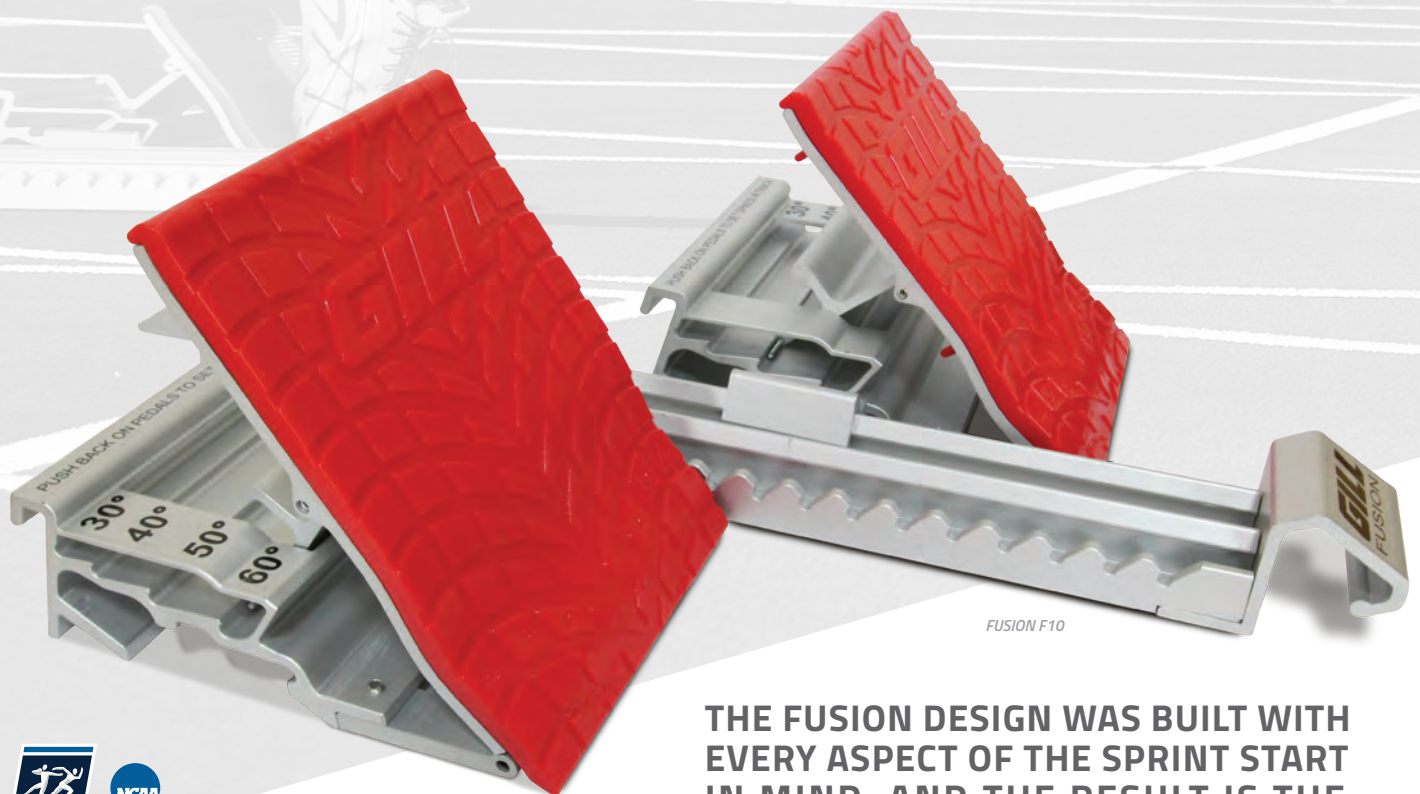


# ***SPRINTS & HURDLES***



# FUSION™

FASTER STARTS THROUGH  
ADVANCED TECHNOLOGY



FUSION F10

THE FUSION DESIGN WAS BUILT WITH EVERY ASPECT OF THE SPRINT START IN MIND, AND THE RESULT IS THE BEST STARTING BLOCK IN EXISTENCE.



OFFICIAL EQUIPMENT SUPPLIER TO THE  
2021 TRACK & FIELD CHAMPIONSHIPS



### FUSION™ F10 STARTING BLOCK

- Exclusive 8" x 10" pedal allows full heel support for the best starts
- Precise and consistent foot placement is ensured using integrated pedal markings
- Angled spikes in base of pedals guarantee no slipping
- Built in handle allows for easy carriage between locations
- Pedals adjustable to 30°, 40°, 50°, 60°
- Meets NFHS, NCAA and World Athletics specifications, World Athletics certified

730183C02	Royal Blue		\$545
730183C03	Red		\$545
730183C05	Orange		\$545
730183C12	Black		\$545
730183C15	Dark Green		\$545



Adjust Fusion pedals to four different angles to fit your starting style.



Handle provides easy transport.





**FUSION F4, F8, & F10**  
PAT. NO. 6,929,585 & 7,156,775



**MORE FUSION COLOR OPTIONS**



**FUSION™ F8 STARTING BLOCK**



- Exclusive 8" x 8" pedals designed for a more aggressive acceleration pattern
- Meets NFHS, NCAA and World Athletics specifications, World Athletics certified

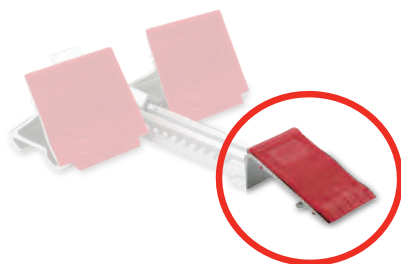
730182C02	Royal Blue		\$510
730182C03	Red		\$510
730182C05	Orange		\$510
730182C12	Black		\$510
730182C15	Dark Green		\$510

**FUSION™ F4 STARTING BLOCK**



- Standard 4" x 8" pedals
- Meets NFHS, NCAA and World Athletics specifications, World Athletics certified

730181C02	Royal Blue		\$429
730181C03	Red		\$429
730181C05	Orange		\$429
730181C12	Black		\$429
730181C15	Dark Green		\$429

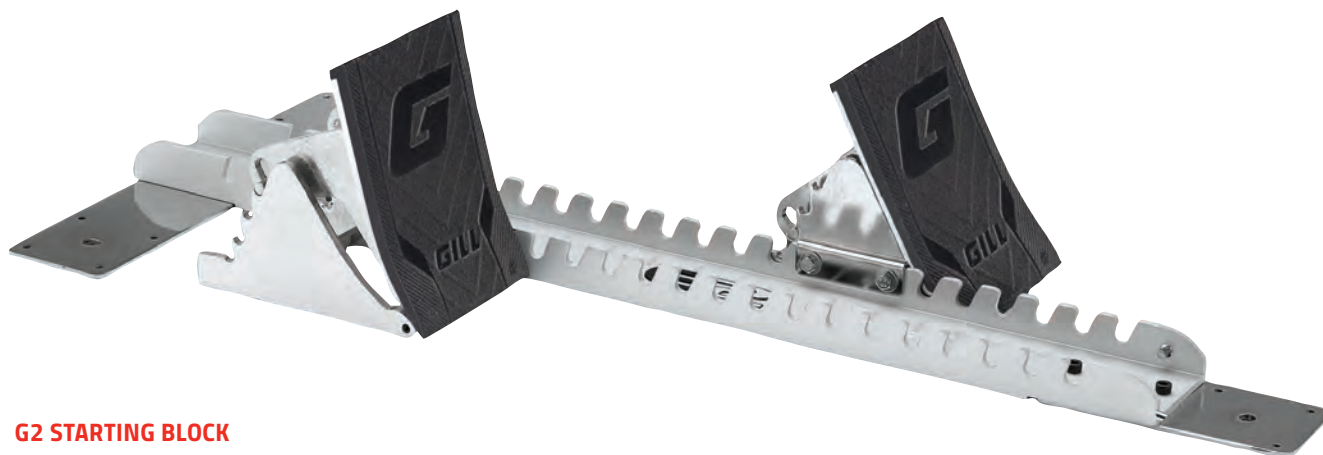


**MOYE™ PEDAL ADAPTER**

Converts any Fusion block into a Moye style block

730168 \$74

## STARTING BLOCKS



### G2 STARTING BLOCK

- Aircraft aluminum construction for maximal lifespan
- Pedals adjust to 45°, 55°, 65°, 75°
- Ruled decal in rail allows quick, easy, repeatable pedal set-up
- Includes 1/2" needle spikes for synthetic tracks
- Meets World Athletics, NCAA and NFHS specifications

410C02	Royal Blue	\$199
410C03	Red	\$199
410C12	Black	\$199

## ALL NEW! G2/S2 BLOCKS

### PAD COLORS

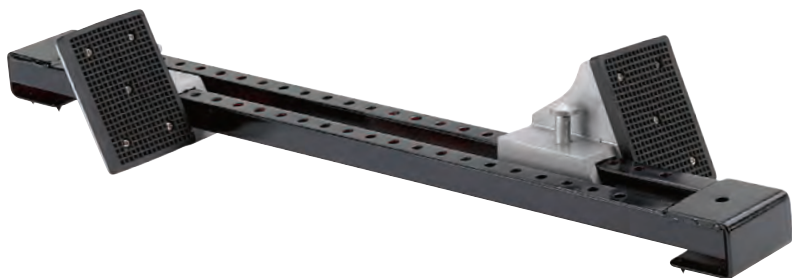


### S2 STARTING BLOCK

- Polished steel rail with cast aluminum pedals
- Pedals adjust to 45°, 55°, 65°, 75°
- Ruled decal in rail allows quick, easy, repeatable pedal set-up
- Includes 1/2" needle spikes for synthetic tracks
- Meets NCAA and NFHS specifications

412C02	Royal Blue	\$125
412C03	Red	\$125
412C12	Black	\$125





**ESSENTIALS™ STARTING BLOCK**

- One piece, all steel construction with durable black powder coat finish
- Standard width pedals with rubber pads
- Change pedal positions with simple Spring Lock Adjustment
- Features built in spikes to eliminate slipping
- *Meets NFHS specifications*

416 \$83

VP416 \$926

INCLUDED: (1) Essentials Block Cart, (8) Essentials Starting Blocks



**INDOOR STARTING BLOCK**

- No nails, pins or holes needed to hold in place
- Foot pressure on the flaps provide a non-slip start

417 \$36



**GILL® INTERNATIONAL STARTING BLOCK CART**

- Holds up to 10 starting blocks horizontally
- Handle is included for easy transport
- Includes a storage shelf for loose pedals and accessories
- Steel construction with durable, architectural gray powder coat finish

733190 \$1690



**ESSENTIALS™ BLOCK CART**

- Holds up to 10 starting blocks
- Steel construction with durable black powder coat finish

923 \$290



**GILL® TRANSPORTER STARTING BLOCK CART**

- Holds up to 16 starting blocks; any style
- Large wheels make transportation easy
- Steel construction with durable black powder coat finish

9311 \$655



# CONTINUUM™

THE WORLD'S FASTEST HURDLE IS ALSO THE WORLD'S SAFEST



OFFICIAL EQUIPMENT SUPPLIER TO THE  
2021 TRACK & FIELD CHAMPIONSHIPS



## CONTINUUM™ C4 AUTOMATIC HURDLE

The Continuum™ hurdle is designed to be the safest, fastest, and most unobtrusive hurdle that the rules will allow, all accomplished by placing the gateboard directly over the pivot point (tip-over-fulcrum).

- Internal leg weight from Continuum looping mechanism creates the most reliable, hassle-free automatic hurdle
- Robust frame features reinforced gusseted elbows for unparalleled strength
- Exclusive extrusion gatetubes allow for graphic customization
- Unique inner leg height indicator for no-mistake height settings (30", 33", 36", 39", 42")
- Internalized height mechanism creates whole-unit hurdle reducing maintenance and upkeep
- *Meets NFHS, NCAA and World Athletics specifications*
- *5 year warranty*

1041CXX 41"  \$580

1047CXX 47"  \$580

## CONTINUUM™ C2 HURDLE

Includes all high-end features from the C4 except with manual weight adjustments.

1141CXX 41" \$440

1147CXX 47" \$440



Easy trigger mechanism creates zero-click continuous transitions from height to height.



On all Gill Hurdles™  
Call for Details.

\*Excludes Essentials

Automatic Hurdle U.S. Patent #9,486,714  
Manual Hurdle U.S. Patent #9,427,677

## CUSTOM GATEBOARD PRINTING

Customize your hurdle boards with four color printing and show off your hurdles!

946 59 or Less Hurdles \$83/order  
60 or More Hurdles FREE

## STANDARD GATEBOARD PRINTING

Customize your hurdle boards with standard gateboard printing. Uppercase letters printed in single color.

945 59 or Less Hurdles \$39/order  
60 or More Hurdles FREE



## REPLACEMENT BOARDS & PARTS

visit us online: [GillAthletics.com](http://GillAthletics.com)



**G6 HURDLE**

- Constructed of thick extruded aircraft aluminum
- Manual weight adjustment to meet precise official pullover force at each height
- Aluminum powder coated gatetubes and Lexan® gateboard
- Easy stack design for better stacking and portability
- Adjustable heights: 30", 33", 36", 39", 42"
- *Meets NFHS, NCAA and World Athletics specifications, World Athletics certified*
- *5 year warranty*

406CXX	41" Hurdle		\$249
40647CXX	47" Hurdle		\$259
40635CXX	35" Hurdle		\$269

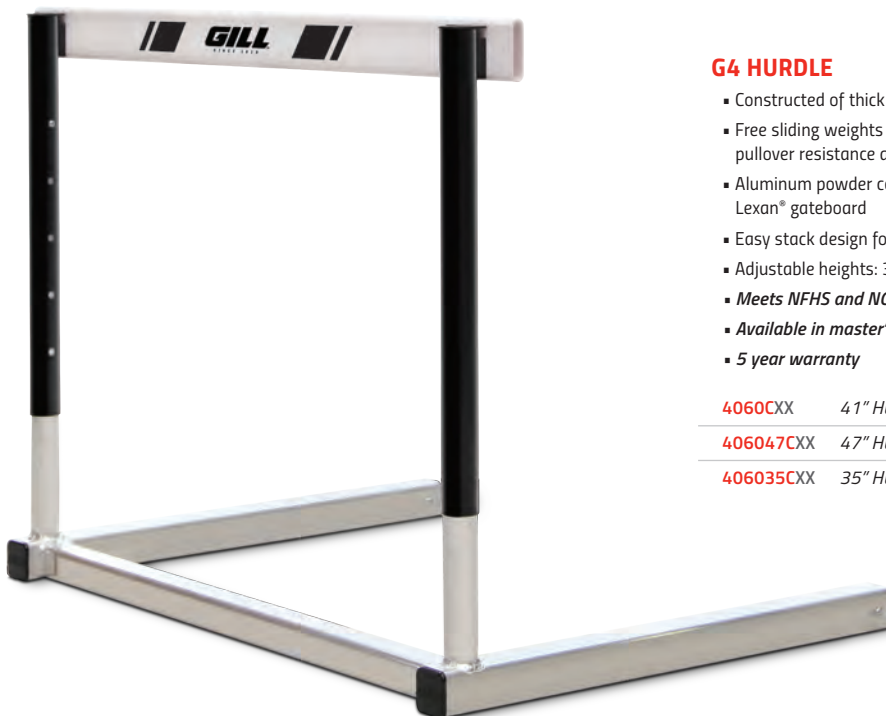
**CUSTOMIZABLE HURDLES**

*Gatetubes available in a variety of bright and durable powder coat colors at no extra cost.*



\*Replace XX in the item number with the two-digit number of your color selection.  
\*Gray and Black powder coat available in Gloss or Flat

**NEW!** Color Rendering Feature at [gillathletics.com](http://gillathletics.com)



**G4 HURDLE**

- Constructed of thick extruded aircraft aluminum
- Free sliding weights adjust quickly to official pullover resistance at all heights
- Aluminum powder coated gatetubes and Lexan® gateboard
- Easy stack design for better stacking and portability
- Adjustable heights: 30", 33", 36", 39", 42"
- *Meets NFHS and NCAA specifications*
- *Available in master's competition hurdle sizes*
- *5 year warranty*

4060CXX	41" Hurdle	\$225
406047CXX	47" Hurdle	\$247
406035CXX	35" Hurdle	\$258



## S4 HURDLE

- Best selling high school hurdle for elite programs
- Aluminum square tube construction
- Welded cross support design provides unrivalled durability
- Aluminum powder coated gatetubes and Lexan® gateboard
- Gatetubes allow for GRAPHIC customization
- Adjustable heights: 30", 33", 36", 39", 42"
- **Meets NFHS specifications**
- **5 year warranty**
- **Ships assembled**

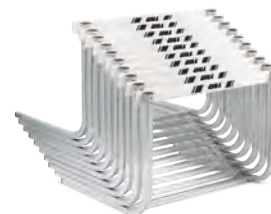
402CXX 41" S4 Hurdle \$188

402TCXXSP 41" Hurdle with Gatetube Graphics \$200



402TC025P

## CUSTOMIZABLE GATETUBES



Easy stack design for better storage and portability

## CUSTOMIZABLE HURDLES

Gatetubes available in a variety of bright and durable powder coat colors at no extra cost.



\*Replace XX in the item number with the two-digit number of your color selection.



## S2 HURDLE

- Powder coated steel U-shaped single cross support design
- Single cross support allows for easy carriage and unhindered plyometric drills
- Aluminum powder coated gatetubes and Lexan® gateboard
- Adjustable heights: 30", 33", 36", 39", 42"
- **Meets NFHS specifications**
- **5 year warranty**
- **Assembly required**

403CXX 41" Hurdle \$159

40335CXX 35" Hurdle \$211



## ESSENTIALS™ HURDLE

- Strong all steel construction
- Economical hurdle that meets official pullover resistance at all heights
- Rigid double-crossbar design ensures superior durability
- Lexan gateboard
- Adjustable heights: 27", 30", 33", 36", 39", 42"
- **Meets NFHS specifications**
- **1 year warranty**
- **Assembly required**

400CXX 41" Hurdle \$113



## S1 HURDLE

- All aluminum design
- Unmatched value for high school programs
- Aluminum powder coated gatetubes and Lexan® gateboard
- Adjustable heights: 30", 33", 36", 39", 42"
- **Meets NFHS specifications**
- **5 year warranty**
- **Assembly required**

411CXX 41" Hurdle \$134



### GILL® FLIGHT HURDLE CART

- World's most convenient and efficient hurdle cart
- Four wheel design provides superior moveability compared to corner cutting three wheel designed carts
- Sturdy steel construction with durable black powder coat finish
- Efficiently supports up to 10 hurdles at a time

4630	41" Hurdle Cart	\$359
4631	47" Hurdle Cart	\$415



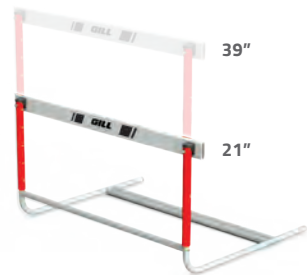
### HURDLE CART WEATHER COVER

733630CXX	41" Cart Weather Cover	\$282
733631CXX	47" Cart Weather Cover	\$282
733630CXXSP	41" Cart Weather Cover with Graphics	\$331
733631CXXSP	47" Cart Weather Cover With Graphics	\$331

## CUSTOMIZABLE



\*To specify color with order, use the two-digit number of your color selection to replace XX in the item number.



### TRIPLE GATETUBE HURDLE

- Strong all steel construction
- Hurdle adjusts for competition heights and shorter heights for training purposes
- Lexan® Gateboard
- Adjustable heights: 21", 24", 27", 30", 33", 36", 39"
- Meets NFHS specifications
- 1 year warranty
- Assembly required

404CXX	41" Hurdle	\$118
--------	------------	-------



### HURDLE STRIDE CHECKER

- Improves athlete's take-off distance
- Provides the coach with immediate feedback on athlete's take-off

4031	\$225
------	-------



### FOAM HURDLE BOARD GUARD

- Easily attaches to hurdle for maximum protection against injury

403BG	Guard	\$12/ea
403BG10	Guards (10)	\$108/set



### HURDLE CART

- Unique walk-in design
- Steel construction with durable black powder coat finish
- Large swivel casters for easy transportation
- Compatible with both rocker and 'L' shaped hurdles

4010	41" Hurdle Cart (Holds 8-10)	\$475
4020	41" Hurdle Cart (Holds 18-20)	\$847
4036	35" Hurdle Cart (Holds 8-10)	\$847



### HURDLE PORTER

- Easy convenient way to move 8-10 hurdles
- Steel construction with durable black powder coat finish
- Compatible with 'L' shaped hurdles only

4210	41" Hurdle Porter	\$359
42147	47" Hurdle Porter	\$590

LET IT

FLY





**THROWS**



## DISCUS

PACER AND OTE DISCUSES HAVE BEEN USED TO SET WORLD RECORDS AND WIN CHAMPIONSHIPS FOR YEARS.



PAT. NO. 10,537,777



2204



2203



2202



82420



720201



817

### OTE™ CARBON DISCUS



- Recommended for elite throwers
- Aluminum reinforced carbon side plates
- Wide steel alloy rim
- Meets NFHS, NCAA and World Athletics specifications

2104	1.0K		85%	\$648
2164	1.6K		86%	\$678
2204	2.0K		90%	\$707

### OTE™ VHM DISCUS

- Recommended for advanced throwers
- Red anodized aluminum side plates
- Steel alloy rim
- Meets NFHS, NCAA and World Athletics specifications, World Athletics certified

2103	1.0K		76%	\$291
2163	1.6K		82%	\$303
2203	2.0K		89%	\$341

### OTE™ HM DISCUS

- Recommended for advanced throwers
- Precision aluminum side plates
- Steel alloy rim
- Meets NFHS, NCAA and World Athletics specifications, World Athletics certified

2102	1.0K		72%	\$250
2162	1.6K		78%	\$258
2202	2.0K		82%	\$288

### PACER® ORANGE DISCUS

- Recommended for advanced throwers
- Orange ABS plastic side plates
- Steel alloy rim
- Meets NFHS, NCAA and World Athletics specifications, World Athletics certified

82410	1.0K		84%	\$241
82415	1.5K		84%	\$256
82416	1.6K		83%	\$260
82417	1.75K		86%	\$267
82420	2.0K		89%	\$280

### PACER® GOLD DISCUS

- Recommended for advanced throwers
- Gold ABS plastic side plates
- Bronze alloy rim
- Meets NFHS, NCAA and World Athletics specifications, World Athletics certified

720203	1.0K		78%	\$377
720202	1.6K		81%	\$405
720201	2.0K		84%	\$423

### PACER® BLACK DISCUS

- Recommended for intermediate throwers
- ABS plastic side plates
- High quality steel rim
- Meets NFHS, NCAA and World Athletics specifications, World Athletics certified

819	1.0K		80%	\$200
818	1.6K		85%	\$208
817	2.0K		85%	\$229



Guaranteed Legal Weight and Size

**HOLLOWOOD STAR™ DISCUS**

- Recommended for intermediate throwers
- Straight grained hard rock maple side plates
- High quality steel rim
- Meets NFHS, NCAA and World Athletics specifications, World Athletics certified

313	1.0K	65%	\$316
305	1.6K	74%	\$345
300	2.0K	75%	\$357



**PACER® GHOST DISCUS**

- Recommended for intermediate throwers
- Clear plated discus
- Stainless steel rim
- Meets NFHS, NCAA and World Athletics specifications

720310	1.0K	80%	\$200
720316	1.6K	80%	\$212
720320	2.0K	80%	\$223

**ESSENTIALS™ DISCUS**

- Recommended for beginner throwers
- ABS plastic side plates
- High quality steel rim
- Meets NFHS, NCAA and World Athletics specifications

82310	1.0K	Pink	58%	\$54
82316	1.6K	Green	61%	\$70
82320	2.0K	Green	67%	\$80



**GILL® BLUE DISCUS**

- Recommended for beginner throwers
- ABS plastic side plates
- High quality steel rim
- Meets NFHS, NCAA and World Athletics specifications

816	1.0K	75%	\$84
815	1.6K	75%	\$94
814	2.0K	75%	\$112



**GILL® RED DISCUS**

- Recommended for intermediate throwers
- ABS plastic side plates
- High quality steel rim
- Meets NFHS, NCAA and World Athletics specifications

312	1.0K	78%	\$94
309	1.6K	80%	\$107
303	2.0K	80%	\$126



**RUBBER DISCUS**

- Solid one-piece construction
- Tough, durable rubber
- Meets NFHS specifications

310	1.0K	\$21
307	1.6K	\$22
302	2.0K	\$23

**INDOOR RUBBER DISCUS**

- Solid one-piece rubber construction
- Won't scuff floors or walls
- Meets NFHS specifications

311	1.0K	\$23
308	1.6K	\$25
304	2.0K	\$34

**RUBBER DISCUS WITH HANDSTRAP**

- Adjustable hand strap
- For training only
- Warning: Practice in a protective cage

81310	1.0K	\$30
81316	1.6K	\$34
81320	2.0K	\$37

**COMPETITOR WOOD DISCUS**

- Recommended for beginner throwers
- Laminated wood side plates
- High quality steel rim
- Meets NFHS, NCAA and World Athletics specifications

317	1.0K	54%	\$65
31601	1.5K	65%	\$67
316	1.6K	67%	\$68
31602	1.75K	68%	\$69
315	2.0K	69%	\$73
81025	2.5K	70%	\$113



OFFICIAL  
COMPETITION  
REFERENCE GUIDE

High School Girls/Women: 1.0K  
High School Boys: 1.6K  
College Men: 2.0K



# THROWS

## HAMMERS

ONE-PIECE  
TEXTURED HANDLE

LIGHTWEIGHT  
BALL BEARING SWIVEL

### ORBITER™ - TUNGSTEN

- Smaller diameter 100% tungsten-filled shell: 125mm for 20lb balls and 156mm for 35lb balls
- One-piece textured handle
- Exclusive lightweight ball-bearing swivel reduces torque and friction during rotation
- Kevlar weight bag
- Plastic injection NBR collar reduces damage potential and allows uninhibited rotation
- 1 year warranty

4959	20 lb	\$2795
4958	35 lb	\$4630



OFFICIAL EQUIPMENT SUPPLIER TO THE  
2021 TRACK & FIELD CHAMPIONSHIPS



### PACER® STAINLESS STEEL HAMMERS

- Includes wire, handle and ball
- Meets NFHS, NCAA and World Athletics specifications
- World Athletics Certified

738940	4K	95mm	\$163
738120	12 lb	103mm	\$174
738160	16 lb	110mm	\$201



### TURNED IRON HAMMERS

- Includes wire, handle and ball
- Meets NFHS, NCAA and World Athletics specifications

3693	3K (6.6 lb)	\$65
36935	3.5K (7.7 lb)	\$66
3694	4K (8.8 lb)	\$69
36945	4.5K (9.9 lb)	\$74
3695	5K (11 lb)	\$81
3612	12 lb	\$77
3696	6K (13.2 lb)	\$84
3614	14 lb	\$85
3616	16 lb	\$86
3618	18 lb	\$96
3620	20 lb	\$102

### TRAINING THROWING WEIGHTS

- Top quality turned iron
- Strong steel handle

3920	20 lb	\$214
3925	25 lb	\$257
3935	35 lb	\$285

### ORBITER™ - LEAD

- Plastic injection NBR collar reduces damage potential and allows uninhibited rotation
- Sewn strap bag made out of double layered seatbelt polyester material
- Textured handle is the widest the rules allow for increased throwing performance
- 1 year warranty

4947	12 lb	\$297
4948	16 lb	\$314
4949	18 lb	\$316
4950	20 lb	\$360
4952	25 lb	\$372
4954	30 lb	\$383
4955	35 lb	\$473



Guaranteed Legal  
Weight and Size







## PERFECT BALANCE SHOTS

- Engineered with exacting specifications for balance
- 100% sweet spot design gives uncompromised throwing distance
- Turned iron material for maximum durability
- Meets NFHS, NCAA and World Athletics specifications

3894	4K	108mm	\$176
3812	12 lb	115mm	\$200
3816	16 lb	128mm	\$229

OFFICIAL  
COMPETITION  
REFERENCE GUIDE



## PACER® STAINLESS STEEL SHOTS

- Machine turned for precision shape and weight
- Meets NFHS, NCAA and World Athletics specifications, World Athletics certified

735940	4K	95mm	\$119
735941	4K	109mm	\$139
735120	12 lb	103mm	\$136
735160	16 lb	110mm	\$155
735163	16 lb	129mm	\$188

High School Girls/Women: 4K  
High School Boys: 12 lb  
College Men: 16 lb



## BRASS SHOTS

- Machine turned brass for unmatched design and feel
- Meets NFHS, NCAA and World Athletics specifications

3594	4K	95mm	\$144
3512	12 lb	103mm	\$155
3516	16 lb	110mm	\$169

## TRAINING SHOTS

- Cast iron material for maximum durability
- Uniform size of diameter allows for ideal training
- Keep the same size diameter as you train with variable weights



TS10830	3K	108mm	\$39
TS10835	3.5K	108mm	\$45
TS10845	4.5K	108mm	\$58
TS10850	5K	108mm	\$64
TS11510	10 lb	115mm	\$54
TS11511	11 lb	115mm	\$58
TS11513	13 lb	115mm	\$69
TS11514	14 lb	115mm	\$77
TS11516	16 lb	115mm	\$93
TS12813	13 lb	128mm	\$64
TS12814	14 lb	128mm	\$69
TS12815	15 lb	128mm	\$75
TS12817	17 lb	128mm	\$85
TS12818	18 lb	128mm	\$91
TS12820	20 lb	128mm	\$104



## INDOOR SOFTSHELL SHOTS

- Polyvinyl plastic shell has softer feel for athlete preference
- Fine lead shot filled to exact weights
- Meets NFHS, and World Athletics specifications, World Athletics certified
- 1 year warranty

3106	6 lb	\$82
3193	3K (6.6 lb)	\$101
3108	8 lb	\$90
3194	4K (8.8 lb)	\$92
3195	5K (11 lb)	\$119
3112	12 lb	\$107
3196	6K (13.2 lb)	\$125
3114	14 lb	\$119
3115	15 lb	\$128
3116	16 lb	\$139
3118	18 lb	\$141



## INDOOR HARDSHELL SHOTS

- Polyethylene shell will last season after season
- Fine lead shot filled to exact weights
- Meets NFHS, NCAA and World Athletics specifications, World Athletics certified
- 1 year warranty

3206	6 lb	\$82
3293	3K (6.6 lb)	\$91
3208	8 lb	\$93
3294	4K (8.8 lb)	\$96
3210	10 lb	\$108
3295	5K (11 lb)	\$111
3212	12 lb	\$114
3296	6K (13.2 lb)	\$117
3214	14 lb	\$117
3215	15 lb	\$122
3216	16 lb	\$130
3218	18 lb	\$144



## CAST IRON SHOTS

- 4K and 12 lb shots guaranteed legal weight and size
- Meets NFHS, NCAA and World Athletics specifications

3306	6 lb	\$19
3393	3K (6.6 lb)	\$21
3308	8 lb	\$22
3394	4K (8.8 lb)	\$26
3310	10 lb	\$28
3395	5K (11 lb)	\$33
3312	12 lb	\$30
3396	6K (13.2 lb)	\$38
3314	14 lb	\$39
3315	15 lb	\$40
3316	16 lb	\$41
3318	18 lb	\$52
3320	20 lb	\$57



## TURNUED SHOTS

- Machine turned for precision shape and weight
- Meets NFHS, NCAA and World Athletics specifications, World Athletics certified

34941	4K	100mm	\$61
34944	4K	104mm	\$49
34943	4K	108mm	\$52
34121	12 lb	108mm	\$71
34122	12 lb	115mm	\$58
34161	16 lb	120mm	\$90
34162	16 lb	125mm	\$80
34163	16 lb	128mm	\$67

## TRAINING & ACCESSORIES

SAVE MONEY WITH VALUEPACKS!



### BOYS' THROWS HIGH SCHOOL

- 307 1.6K Gill Rubber Discus (1)
- 815 1.6K Gill Blue Discus (1)
- 309 1.6K Gill Red Discus (1)
- 82316 1.6K Gill Essentials Discus (1)
- 3312 12 lb Cast Iron Shot (1)
- 34121 12 lb, 108mm Turned Iron Shot (1)
- 931 Shot/Discus Carriers (2)

VP200 \$416

### GIRLS' THROWS HIGH SCHOOL/COLLEGE

- 310 1K Gill Rubber Discus (1)
- 816 1K Gill Blue Discus (1)
- 312 1K Gill Red Discus (1)
- 82310 1K Gill Essentials Discus (1)
- 3394 4K Cast Iron Shot (1)
- 34941 4K, 100mm Turned Iron Shot (1)
- 931 Shot/Discus Carriers (2)

VP100 \$363



#### DISCUS CARRIER

- High quality vinyl discus carrier
- Features a plastic handle and convenient shoulder strap
- Holds 2 discuses or shot puts

931 \$17



#### 2-SHOT CARRIER

- Features a plastic handle and convenient shoulder strap
- Vinyl construction with snap top closure
- Holds 2 shot puts

929 \$19



#### SCHOLASTIC SHOT CARRIER

- Heavy woven polyethylene rope with plastic handle
- Holds 1 shot put

928 \$11



#### TRAINING DISCUS

- Customize your training with variable weight
- Easy and quick transition from weight to weight
- Not competition legal, for training only

812 0.85K-1.20K \$119

811 1.40K-1.80K \$134

810 1.75K-2.20K \$162



#### DELUXE UNIVERSAL IMPLEMENT CARRIER

- Holds any of the three standard throwing implements
- Stores and protects: Shot Put (1), Discus (2), or Hammer (1)
- Great value to protect your throwing investment

9282 \$46



#### ADD ON WEIGHT

- Use for either hammer or indoor throwing weights
- Economical way to add variable weight to your training without buying more implements
- Adjustable from .5 lb to 2.5 lb

3603 Add on Weight \$28

SHOTS  
THROWING  
WEIGHTS  
DISCUS  
HAMMERS  
JAVELINS



\*733100 Shown

**INTERNATIONAL IMPLEMENT CARTS**

- HDPE liners keep each implement separated and protected
- 8" never-flat rubber casters for easy movement over rough terrain
- Steel construction with durable powder coat finish

<b>733100</b>	Shot Cart (Holds 32)	<b>\$1,525</b>
<b>733110</b>	Throwing Weight Cart (Holds 20)	<b>\$1,525</b>
<b>733200</b>	Discus Cart (Holds 28)	<b>\$1,525</b>
<b>733210</b>	Hammer Cart (Holds 16)	<b>\$1,525</b>
<b>733220</b>	Javelin Cart (Holds 24)	<b>\$1,525</b>



**TRACK WAGON**

- Conveniently haul a variety of track equipment
- Gates fold down for added convenience
- Large pneumatic tires for rugged terrain travel
- 500 lb capacity to haul even the heaviest of equipment
- 48" long x 24" wide x 12" deep x 25" tall

**937** Track Wagon **\$279**



\*9312 Shown

**IMPLEMENT CARTS**

<b>9313</b>	Shot Cart (Holds 24)	<b>\$638</b>
<b>9314</b>	Discus Cart (Holds 30)	<b>\$638</b>
<b>9315</b>	Javelin Cart (Holds 26)	<b>\$638</b>
<b>9316</b>	Hammer Cart (Holds 18)	<b>\$638</b>
<b>9312</b>	Discus/Shot/Hammer Combo Cart	<b>\$689</b>



**HAMMER HANDLE  
(ALUMINUM GRIP)**

**32020** World Athletics Approved **\$22**



**HAMMER WIRES**

<b>32200</b>	20" Wire	<b>\$12</b>
<b>32300</b>	30" Wire	<b>\$12</b>
<b>32370</b>	37" Wire	<b>\$12</b>
<b>32375</b>	37 1/2" Wire	<b>\$12</b>
<b>32380</b>	38" Wire	<b>\$12</b>
<b>32385</b>	38 1/2" Wire	<b>\$12</b>
<b>32390</b>	39" Wire	<b>\$12</b>
<b>32395</b>	39 1/2" Wire	<b>\$12</b>



**USA HAMMER GLOVES**

- Designed to endure the toughest throwers
- Seamless outside finger designed for unobtrusive fit
- High quality genuine leather

<b>31918</b>	Left	Small	<b>\$22</b>
<b>31917</b>	Right	Small	<b>\$22</b>
<b>31919</b>	Left	Medium	<b>\$22</b>
<b>31922</b>	Right	Medium	<b>\$22</b>
<b>31920</b>	Left	Large	<b>\$22</b>
<b>31923</b>	Right	Large	<b>\$22</b>
<b>31921</b>	Left	X-Large	<b>\$22</b>
<b>31924</b>	Right	X-Large	<b>\$22</b>



**2K TURBO HAMMER**

- Teaches proper throwing mechanics and fundamentals
- Made of durable nylon with strong grip handle
- Ball made with high grade polyethylene rubber with gel filling and sharkskin surface
- Safe for both indoor and outdoor use

**TA1185** **\$113**

**2K TURBO SHOT**

- Teaches proper throwing mechanics and fundamentals
- High grade polyethylene rubber with gel filling
- Sharkskin grip surface
- Non-marking materials
- Printed uni-grip hand guide for proper positioning

**TA1184** **\$64**



## JAVELINS



The choice of elite throwers worldwide! OTE javelins are handmade in the USA by the

master artisans who are following in the tradition of the world's greatest name in javelin development: Dick Held. The performance potential of OTE javelins is unsurpassed, being used for numerous championship wins and world records.



Gill Athletics is proud to be the exclusive North American distributor of all Nordic javelins. The Nordic Sport javelins are all manufactured with the famous Nordic finish and Nordic quality. Gill manufactures the elite OTE javelins, as well as the championship level Pacer javelins. Both Gill and Nordic provide different level javelins as well as rubber tipped javelins.



Built by the same master craftsmen that make the OTE javelins, Pacer javelins are built to slightly more generous tolerances. These javelins are built for performance and durability, and are suitable for high level competition. Pacer is the brand of choice for coaches seeking great value.



This lower price point line of javelins is recommended for high school

level competition offering unsurpassed value. The best quality javelin for a budget-conscious program, Tru-Flight javelins allow athletes to have more efficient practice sessions by purchasing multiple javelins at nearly the same price as a singular higher-priced javelin!

### CHOOSING A JAVELIN

**STEP 1** Decide if you are purchasing a Rubber Tipped, 600g women's, or 800g men's javelin.

**STEP 2** Consider the technical proficiency of the athlete. Javelin throwers who are skilled at flying the javelin will get farther throws when they throw through the point using OTE javelins. Throwers who occasionally miss accurate flights should switch between OTE and Pacer to help learn the fine points of flying the javelin. Beginners will learn quicker with Tru-Flight javelins, and if possible, should occasionally try an OTE to see if they understand how to really make it fly.

**STEP 3** Once you have decided which javelin will best maximize your athlete's potential, choose a light, medium, or max relative flex javelin. Generally speaking; the stiffer the javelin, the longer the throw, assuming it is thrown precisely through the point.

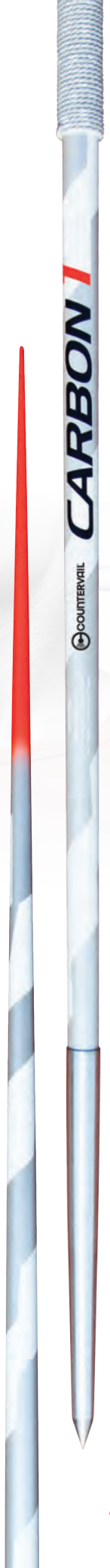
### THROW FURTHER

	ATHLETE'S ABILITY	JAVELIN FORGIVENESS
STIFF 4.4 FLEX 100M	High	Low
	Low	High
SOFT 12.6 FLEX 40M		High

Use this chart for help on how to choose the best javelin. Call our experts at 800.637.3090 for more details.



# CARBON 1™



Gill Athletics is privileged to announce our exclusive partnership with Countervail® to create the world's most technologically advanced javelin. The OTE Carbon 1 Countervail provides up to a 40% quicker damping rate which results in longer flights with minimal vibration.

The Carbon 1 Countervail is designed after the world-record setting OTE Legend tailwind javelin, and rooted in a patented design by the inventor of modern javelins, Dick Held. Featuring a flex of 4.4 and thicker grip cord for more support and control, this javelin will behave similar to old-rules javelins and appear to "float" when thrown clean.



THE **ONLY** SINGLE-PIECE CARBON JAVELIN IN THE WORLD



CARBON FIBER TECHNOLOGY



THICKER GRIP CORD FOR MAXIMUM PERFORMANCE

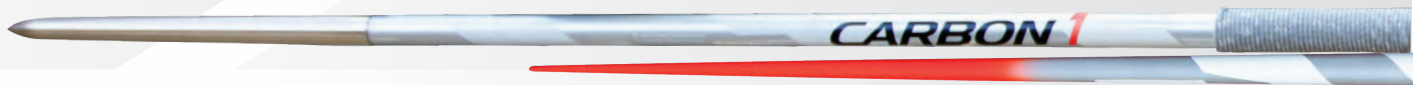


OFFICIAL TRACK & FIELD EQUIPMENT SUPPLIER

## JAVELINS

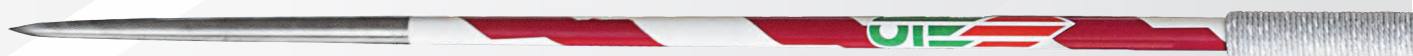


Guaranteed Legal  
Weight and Size



### CARBON 1 COUNTERVAIL

2001H	Headwind		80m	5.4 flex	\$1265
2001T	Tailwind		80m	5.4 flex	\$1300



### COMPETITION

2695H	Headwind		70m	6.1 flex	\$594
2695T	Tailwind		70m	6.1 flex	\$618



### XTRA

2690H	Headwind		60m	6.5 flex	\$560
2690T	Tailwind		60m	6.5 flex	\$583



### SPECIAL

2684H	Headwind		50m	6.9 flex	\$526
2684T	Tailwind		50m	6.9 flex	\$549



### INTERMEDIATE

2663H	Headwind		40m	7.2 flex	\$492
2663T	Tailwind		40m	7.2 flex	\$514



**600G  
JAVELINS**



**nordic  
Sport**

7961600	Comet Alu 600		Universal	12.1 flex	\$128
7925600	Viking 600		Universal	11.1 flex	\$237
7915600	Nordic Classic 600		Tailwind	8.5 flex	\$426
7917601	Diana Classic 600		Universal	7.2 flex	\$1095
7917602	Diana Classic 600		Headwind	7.7 flex	\$608
7917600A	Master Alu 600		Universal	7.9 flex	\$506
7917606C	Olympia Carbon 600		Universal	5.9 flex	\$1335
7917603C	Diana Carbon 600		Headwind	5.3 flex	\$1330
7918601C	Valhalla 600		NXS	Hard	\$1440
7918600C	Valhalla 600		NXB	Hard	\$1440
7918603C	Valhalla 600		NXS	Medium	\$1355
7918602C	Valhalla 600		NXB	Medium	\$1355
7918604C	Valkyrie 600		NXS	Medium	\$1260



**PACER**

760005	Litania®	Universal	40m	8.2 flex	\$270
760011	Comet 45	Headwind	45m	7.0 flex	\$444
760012	Comet 55	Headwind	55m	6.8 flex	\$454



**GILL TRU-FLIGHT**

35064	Tru-Flight 40	Universal	40m	8.6 flex	\$195
35065	Tru-Flight 50	Universal	50m	8.3 flex	\$216



**HEADWIND (H)** A headwind version of an OTE javelin describes a streamlined tip designed to help cut through the wind. This javelin tip, because of its small surface area, will have self-correcting characteristics when a thrower misses the point, adding valuable distance to a missed throw. The headwind version is ideal for 'power' throwers who lack perfect technique but make up for it with strength and torque.

**TAILWIND (T)** A tailwind version of an OTE javelin describes a thicker, more blunted tip that increases the surface area in front of the javelin. When a thrower hits the point with a tailwind version of an OTE javelin, it will mimic the old rules style javelins, with a beautiful floating flight and greater distances. This tailwind version is ideal for 'finesse' throwers who lack high outputs of power, yet throw at a high technical level.

## JAVELINS



Guaranteed Legal  
Weight and Size



### CARBON 1 COUNTERVAIL

3001H	Headwind		100m	4.4 flex	\$1265
3001T	Tailwind		100m	4.4 flex	\$1300



### COMPETITION

2885H	Headwind		90m	6.3 flex	\$767
2885T	Tailwind		90m	6.3 flex	\$801



### XTRA

2890H	Headwind		80m	6.7 flex	\$722
2890T	Tailwind		80m	6.7 flex	\$756



### SPECIAL

2870H	Headwind		70m	6.9 flex	\$594
2870T	Tailwind		70m	6.9 flex	\$629



### INTERMEDIATE

2860H	Headwind		60m	7.1 flex	\$553
2860T	Tailwind		60m	7.1 flex	\$587

**800G  
JAVELINS**



Nordic Sport

7961800	Comet Alu 800		Universal	11.4 flex	\$147
7922800	Viking 800		Universal	10.4 flex	\$279
7912800A	Master Classic 800		Headwind	7.8 flex	\$638
7913800	Master 800		Universal	7.5 flex	\$598
7916802	Super Elite Classic 800		Tailwind	7.0 flex	\$1015
7916805	Champion Steel 800		Headwind	6.4 flex	\$1220
7916803	Airglider Steel 800		Universal	6.1 flex	\$1295
7916808C	Orbit Carbon 800		Tailwind	5.0 flex	\$1365
7916800C	Champion Carbon 800		Headwind	4.8 flex	\$1375
7916803C	Airglider Carbon 800		Universal	4.5 flex	\$1375
7918801C	Valhalla 800		NXS	Hard	\$1520
7918800C	Valhalla 800		NXB	Hard	\$1520
7918803C	Valhalla 800		NXS	Medium	\$1465
7918802C	Valhalla 800		NXB	Medium	\$1465
7918804C	Valkyrie 800		NXS	Medium	\$1315



PACER

780005	Litania®	Universal	50m	8.7 flex	\$357
780050	Astro 50	Headwind	50m	7.4 flex	\$463
780060	Astro 60	Headwind	60m	7.2 flex	\$470
780031	Astro 70	Headwind	70m	6.9 flex	\$477



GILL TRU-FLIGHT

35085	Tru-Flight 50	Universal	50m	8.6 flex	\$216
35086	Tru-Flight 60	Universal	60m	8.3 flex	\$227
35087	Tru-Flight 70	Universal	70m	7.7 flex	\$238





## JAVELINS & ACCESSORIES



Guaranteed Legal Weight and Size



### 600G RUBBER TIPPED

2663R	Intermediate RT	40m	7.2 flex	\$492	
2690R	Xtra RT	60m	6.5 flex	\$560	

### 800G RUBBER TIPPED

2860R	Intermediate RT	60m	7.1 flex	\$553	
2870R	Special RT	70m	6.9 flex	\$594	
2890R	Xtra RT	80m	6.7 flex	\$722	

Nordic Sport

7968600	Classic Alu RT 600		8.8 flex	\$210	
7955600	Javelin High School 600		Medium	\$316	

Nordic Sport

7968800	Classic Alu RT 800		8.7 flex	\$254	
7952800	Javelin High School 800		Medium	\$349	
7916822	High School Master 60 800		Medium	\$405	
7962800	Javelin HS Elite 800		Max	\$527	
7916902	High School Master 70 800		Max	\$415	

### PACER

760055R	Litania® RT	40m	8.2 flex	\$270	
760211R	Comet 45RT	45m	7.0 flex	\$444	
760212R	Comet 55RT	55m	6.8 flex	\$454	

### PACER

780055R	Litania® RT	50m	8.7 flex	\$357	
780250R	Astro 50RT	50m	7.4 flex	\$447	
780260R	Astro 60RT	60m	7.2 flex	\$466	
780033R	Astro 70RT	70m	6.9 flex	\$477	

GILL TRU-FLIGHT

35164R	Tru-Flight 40RT	40m	8.6 flex	\$195	
35165R	Tru-Flight 50RT	50m	8.3 flex	\$216	

GILL TRU-FLIGHT

35185R	Tru-Flight 50RT	50m	8.6 flex	\$216	
35186R	Tru-Flight 60RT	60m	8.3 flex	\$227	

RUBBER TIPPED STATES: ALABAMA, NEW JERSEY, NORTH DAKOTA, AND WASHINGTON

### J FORCE TRAINING JAVELINS



- 700g weighted training javelin designed with 800g dimensions
- 700g is the ideal tool for injury recovery training
- 900g weighted training javelin designed with 800g dimensions
- 900g is the perfect tool for specific strength adaptation

780700	700g Training Javelin	\$562
780900	900g Training Javelin	\$618

### POCKET JAVELIN



- Replicates the feel of a competition javelin
- Aluminum shaft, rubber ends, and real grip cord
- Balance point that matches that of a competition javelin
- Compact design of 13"
- Designed for indoor and outdoor use

34620	600g Pocket Javelin	\$88
34820	800g Pocket Javelin	\$88



### NOCKEN BALLS

- Designed to give you the look and feel of a javelin while throwing indoors

TA105	400g	\$23
TA100	600g	\$29
TA101	800g	\$30
TA1010	1K	\$36



### OUTDOOR THROWING BALLS

- Technique and arm speed training balls. For outdoor use.

TA113	400g	\$18
TA114	600g	\$20
TA115	800g	\$21
TA116	1K	\$23
TA117	1.5K	\$24
TA118	2K	\$24



### INDOOR THROWING BALLS

- Technique and arm speed training balls. For indoor use.

TA102	500g	\$20
TA103	600g	\$22
TA104	800g	\$33
TA1041	1K	\$36
TA1042	1.6K	\$38
TA1043	2K	\$39

**PETRANOFF JAVELINS**

- Designed by former world record holder Tom Petranoff (99.72m)
- Advance from 300g to 800g model

TA1193	300g Turbojav	\$46
TA1194	400g Turbojav	\$49
TA1195	500g Long Tom	\$58
TA1196	600g Long Tom	\$62
TA1187	700g Turbo Spier	\$90
TA1188	800g Turbo Spier	\$86



**INDOOR TRAINING JAVELINS**

- Air drag cones increase resistance to shorten throw for indoor facilities
- Aluminum shaft with rubber tip for maximum durability

TA1198	600g	\$132
TA1199	800g	\$133



**ALL SURFACE TRAINING JAVELINS**

- Designed for indoor, outdoor, and turf surfaces
- Get the balance and weight of a competition implement with a durable metal shaft and real grip cord
- Cost effective way to get more practice implements in your training inventory

34610	600g	\$95
34710	700g	\$95
34810	800g	\$95
34910	900g	\$95

REAL GRIP CORD!



**JAVEE JAVELIN TRAINER**

- Excellent training aid to develop javelin specific strength, flexibility, range of motion
- Use for static and dynamic stretching and warm up routines
- Improve functional length limits for reduced chance of muscle and tendon injuries
- Variable resistance provided by three strong elastic cords
- Grip diameter specific to 600g and 800g sizes

TA1820	600g	\$81
TA1821	800g	\$81



**ARCHY ALL SURFACE TRAINING MAT**

- Specifically designed to help isolate the shoulder for javelin-specific exercises
- Three different sides create a multi-use training tool for core, flexibility, and technique
- Anti-skid material on bottom of Archy

TA2000	\$460
--------	-------

## TRAINING & ACCESSORIES



### OTE™ DELUXE JAVELIN BAG

- Holds up to six javelins
- Two hardshell inserts wrapped in 1/4" lightweight closed cell foam
- Soft rubber handles and seams held with strong 2" webbing
- Men's length 9'; Women's length 8'

700706 600g Bag \$562

700708 800g Bag \$597



### PACER® ADJUSTABLE BAG

- Includes 4 protective tubes
- Holds 5-7 javelins (without tubing), 4 javelins (with tubing)
- Heavy duty Cordura nylon
- Universal fit adjusts to hold 600g and 800g javelins

700803 \$224



### HARDSHELL JAVELIN TUBE

- Holds five to seven javelins
- ABS plastic material gives peace of mind when transporting valuable javelins
- Universal fit adjusts between 600g and 800g javelins

700804 \$124



### JAVELIN BACK BRACE

- Used by javelin throwers around the world
- Supports throwers and helps them throw far and safe
- Fits waist sizes 28-50" (71-127cm)

4581 \$38



### NORDIC BACK BRACE

1086292 S, 22" - 28.5" \$175

1086293 M, 28" - 34.5" \$175

1086294 L, 34" - 40.5" \$175

1086295 XL, 40" - 46.5" \$175

1086296 XXL, 46.5"+ \$175



### NORDIC ELBOW BRACE

1086392 S, 7.5" - 9" \$82

1086383 M, 8.5" - 12" \$82

1086384 L, 11.5" - 14" \$82

1086395 XL, 13.5" - 15" \$82



# IMPLEMENT ACCESSORIES & KITS

## IMPLEMENT CERTIFICATION KITS

- Official-friendly design assures each implement meets specifications
- Laser cut stainless steel gauges for extreme accuracy and permanency
- High School gauges are 1/4" polycarbonate for durability and grip
- Labeled tabs on each gauge helps organize the process
- Self-contained unit packaged in one convenient case



<b>93051</b>	High School Certification Kit (1K, 1.6K discuses; 4K, 12 lb shot put)	<b>\$499</b>
<b>93066</b>	Javelin Certification Kit (all javelin competitions)	<b>\$644</b>
<b>93075</b>	NCAA Certification Kit (1K, 2K discuses; 4K, 16 lb shot put; 4K, 16 lb hammer; all javelin competitions)	<b>\$3545</b>
<b>93080</b>	World Athletics Certification Kit (1K, 1.5K, 1.75K, 2K discuses; 4K, 5K, 6K, 16 lb shot put and hammer; all javelin competitions)	<b>\$3950</b>



## GILL® IMPLEMENT SCALES

- Quickly, easily and accurately measure the weight of any track implement
- Works for javelin, discus, hammer, shot, and indoor weight
- Easy zero reset for calibration prior to weighing
- Read out in English or Metric system

<b>93015</b>	Up to 15K/33 lb	<b>\$432</b>
<b>93020</b>	Up to 20K/44 lb	<b>\$743</b>
<b>93021</b>	Scale Ring	<b>\$23</b>



## ESSENTIALS™ IMPLEMENT SCALE

- Large 55 lb capacity scale with 'easy press' buttons
- Includes digital auto calibration and full range tare/zero function
- Read out in English or Metric system

<b>93010</b>	Essentials™ Implement Scale	<b>\$109</b>
--------------	-----------------------------	--------------



## INDOOR THROWING WEIGHT GAUGE

- Easily check the length of indoor weight throw implements
- Adjustable knob assists in the quick calibration of the gauge before each use

<b>93035</b>	<b>\$303</b>
--------------	--------------



## SHOT/HAMMER RETRIEVER

- Ideal for quick, painless pick-up of shots and hammers
- Multi-adjustment height for ergonomic use

<b>940</b>	<b>\$36</b>
------------	-------------

## SHOT AND DISCUS MARKERS

- Large three square-inch writing surface
- Ample room to write athlete's name or number
- Extra strong pointed base for fast placement
- 7 1/2" long
- 18 gauge steel



<b>932W</b>	Marker	<b>\$2.75/ea</b>
<b>932W12</b>	Markers (12)	<b>\$29/set</b>

RECORDS  
ARE MADE  
TO BE  
BROKEN





**MEETS**



## ELECTRONICS & INDICATORS



OFFICIAL EQUIPMENT SUPPLIER TO THE  
2021 TRACK & FIELD CHAMPIONSHIPS

### TIMER AND DISPLAY

- Lightweight with rugged rubber bumpers for increased durability
- Countdown timer has various pre-programmed times
- Three brightness intervals adjust to your specific needs
- Also used as an elapsed time clock for CC, road races, and the track
- Countdown can be set for durations up to 99 minutes
- Anti-glare 6" x 3" digits
- Includes tripod, 120V adapter plug, and 12V internal battery
- External battery can be connected if needed
- Connect to Gill Ultrasonic Wind Gauge to display wind reading continuously or at 10 second intervals



<b>E49821</b>	Single Sided	<b>\$1165</b>
<b>E49822</b>	Double Sided	<b>\$1575</b>
<b>E39820B</b>	Optional External Battery	<b>\$86</b>



### ULTRASONIC WIND GAUGE 2.0

- Highly visible backlit display improved for officials accuracy
- Use as standalone, or designed for smooth interface with Lynx systems
- Special cable from Lynx required for Lynx interface
- Includes tripod, AC adapter, and padded protective case
- World Athletics: ultrasonic wind gauges shall be used at all International Competitions (Rule 1.1 (a) through (h))

**E49810**      **\$2160**



### COMPACT WIND GAUGE KIT

- Displays Wind Reading in Meters Per Second
- Accuracy: +/- 0.010 m/s
- Meets NFHS, NCAA, and World Athletics specifications
- Includes tripod and carry case

**E39815**      **\$341**



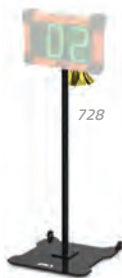
### COMPACT WIND INDICATOR

- Designed to indicate relative strength of wind at point of use
- Unintrusive economical design, gets the job done without breaking the budget
- Guides athletes to jump safer (pole vault) and farther (long jump/triple jump)

**726**      **\$175**



E49872



728

## 2 DIGIT ELECTRONIC DISPLAY

- Use as a PV standard indicator, wind reading indicator unit, or lap counter.
- 6" digits with 3 stage dimming feature
- Quality carry/storage case included
- Lap Counter Display Stand sold separately

**E49872** 2 Digit Electronic Display **\$580**

**728** Lap Counter Display Stand **\$337**



79200



79300



79400



79100

## PERFORMANCE INDICATORS

- 9" numerals
- Rotates 360° for visibility
- Aluminum construction with steel roll away base
- Powder coated black

**79300** 2 Digit Lap Counter w/ Bell **\$692**

**79400** 2 Digit Pole Vault Display **\$774**

**79100** 4 Digit Scholastic Performance Indicator **\$874**

**79200** 5 Digit National Performance Indicator **\$1035**



LYNX COMPATIBLE  
EAGLE EYE COMPATIBLE

## LED SCROLLING DISPLAY

- Displays event standings, upcoming races and more
- Update information easily with provided software
- Software is designed to run in background when using Lynx, scrolls track event times/places as Lynx System files results
- Sixteen 4" tall characters maximum displayed at one time
- Power options: 120V power cord (included) or 12V battery (sold separately)
- Carrying case included

**E39860** Scrolling Display **\$2350**

**E39820B** 12V Battery **\$86**



LYNX COMPATIBLE  
EAGLE EYE COMPATIBLE

## GILL 9" DIGIT RACE CLOCKS

- Six digit race clocks in 9" tall digits
- Count-up/count-down capability in seconds or hundredths of seconds
- Features end-mounted controls for direct operation
- Power options: 120V AC (included) or external 12V battery (sold separately)
- *Optional carrying case available (sold separately)*
- *Tripod and remote control included*

**E39851** Race Clock **\$1805**

**E39853** Double-Sided Race Clock **\$2535**

**E39858** Carrying Case **\$545**

**E39820B** 12V Battery **\$86**

# MEETS

## MEASURING DEVICES



### FIBERGLASS MEASURING TAPES

- Durable vinyl-coated fiberglass tape
- More flexible than cloth tapes and won't kink or break when twisted or stepped on
- Measures in both English and Metric units
- C = closed reel; O = open reel

984	50' (15m)	C	\$12
985	100' (30m)	O	\$17
987	165' (50m)	O	\$25
986	200' (60m)	O	\$32
988	300' (90m)	O	\$48
989	330' (100m)	O	\$52



### STEEL MEASURING TAPES

- Coated with durable epoxy finish
- C = closed reel; O = open reel

980	50' (15m)	C	\$26
981	100' (30m)	C	\$37
983	300' (90m)	O	\$100
971	330' (100m)	O	\$104

### MEASURING TAPE KIT

For all your measuring needs, includes:

- 988 300' (90m) (1)
- 985 100' (30m) (2)
- 984 50' (15m) (1)

982	Measuring Tape Kit	\$92
-----	--------------------	------



### TAPE STAKES

- Handy tool attaches to end of measuring tape for convenient use
- Used for all throwing and horizontal jumping events
- Set of 4

970	\$45/set
-----	----------



After aligning the targeting laser with the landing, simply push a button on and read the measurement.

### HORIZONTAL JUMPS LASER MEASURING DEVICE

- Provides accurate measurements for both Long Jump and Triple Jump
- Leica Measuring Device reads both English and Metric units
- Constructed with a 6 meter aluminum rail and weighted steel bases

E73740	\$3330
--------	--------



### LASER DISTANCE MEASURING SYSTEM

- Accurate laser measuring device for throwing events
- Center the mounted laser after each attempt and aim at the target
- Accurate readings to the nearest 1/8"
- Fully compliant with NFHS, NCAA and World Athletics specifications

E737	\$3480
------	--------



# EVERYTHING YOU NEED IN ONE SIMPLE PACKAGE

## ETHERLYNX VISION™ CAMERA PACKAGES BY LYNX

- **All packages contain everything you need.** Each package is a complete photofinish and timing solution for your track meets. All you add are the athletes and a computer!
- **All systems can run on any Windows computer** equipped with an Ethernet connection
- **All systems include the new FinishLynx EASYALIGN™ technology** that shows a full-frame video view of the finish line for fast and accurate camera placement
- **All systems take full color pictures** for easier athlete identification
- **All systems use power-over-Ethernet**, so no dedicated AC power is required at the camera location. A single Ethernet cable transfers all data AND provides camera power
- **All packages include LYNXPAD Meet Management software** - this integrates with multiple online meet entry websites, including Athletics.net and DirectAthletics.com



THE SCHOLASTIC SOLUTION	THE BRONZE SOLUTION	THE SILVER SOLUTION	THE GOLD SOLUTION	THE MVP SOLUTION
<ul style="list-style-type: none"> <li>▪ 5L510 EtherLynx™ Camera</li> <li>▪ 600 Standard Frame Rate</li> <li>▪ 6mm fixed lens</li> </ul>	<ul style="list-style-type: none"> <li>▪ 5L500 Vision EtherLynx™ Camera</li> <li>▪ 1000 Standard Frame Rate</li> <li>▪ Manual Zoom lens</li> </ul>	<ul style="list-style-type: none"> <li>▪ 5L500 Vision EtherLynx™ Camera</li> <li>▪ 2000 Standard Frame Rate</li> <li>▪ Motorized Zoom lens</li> </ul>	<ul style="list-style-type: none"> <li>▪ 5L500 Vision EtherLynx™ Camera</li> <li>▪ 2000 Standard Frame Rate</li> <li>▪ Motorized Zoom lens</li> </ul>	<ul style="list-style-type: none"> <li>▪ 5L500 Vision EtherLynx™ Camera</li> <li>▪ 2000 Standard Frame Rate</li> <li>▪ Motorized Zoom lens</li> </ul>
<p><b>INCLUDES:</b></p> <p>All camera connection and power cables</p> <p>Custom FinishLynx Carrying Case</p> <p>Tech Support &amp; 1-year renewable warranty</p> <p>Camera Tripod and mounting hardware</p> <p>FinishLynx Lite software with support for RadioLynx Wireless Start (E39916)</p>	<p><b>INCLUDES EVERYTHING FROM THE SCHOLASTIC SOLUTION, PLUS:</b></p> <p>Full FinishLynx32 software with support for RadioLynx Wireless Start (E39916), Lynx Software Plug-in(s), multiple FinishLynx Cameras, IdentiLynx 2-D video camera, scoreboard interface for display of running time &amp; results, and wind gauge interface for automatic wind reading data import</p>	<p><b>INCLUDES EVERYTHING FROM THE BRONZE SOLUTION, PLUS:</b></p> <p>Automatic capture &amp; virtual photocell plug-in</p> <p>High resolution (2000 fps) images</p> <p>Remote positioner (remote camera adjustment)</p> <p>Motorized lens (remote lens adjustment)</p>	<p><b>INCLUDES EVERYTHING FROM THE SILVER SOLUTION, PLUS:</b></p> <p>RadioLynx Wireless Start System</p> <p>Power over Ethernet network switch</p> <p>IdentiLynx full frame video camera</p> <p>9-digit alphanumeric scoreboard</p>	<p><b>INCLUDES EVERYTHING FROM THE GOLD SOLUTION, PLUS:</b></p> <p>World Athletics approved sonic wind gauge</p> <p>A second 1000 fps 5L500 Vision EtherLynx™ camera (reverse angle/alternate finish line)</p>
<p><b>E39905    \$5000</b></p>	<p><b>E39906    \$7500</b></p>	<p><b>E39903    \$11300</b></p>	<p><b>E39901    \$17000</b></p>	<p><b>E39920    \$25000</b></p>

\* FinishLynx Systems are licensed and cannot be returned.

## TRACK ACCESSORIES



### CONE MARKERS

- Durable, flexible PVC

F451	2"	\$2.50	999	12"	\$9.50
975	4"	\$5.25	976	18"	\$14
TA9756	6"	\$5.50			



730310



### GILL® LANE MARKERS

- Lightweight markers are easy to stack and carry
- Stable 3-sided design provides great visibility
- 28" tall with convenient hand hole for quick set up
- Custom graphics available

73090	Lanes 1-8	\$1300/set
73090SP	Lanes 1-8, Custom	\$1520/set
730909	Lane 9 Only	\$169/ea
730909SP	Lane 9 Only, Custom	\$196/ea
730910	Lane 10 Only	\$169/ea
730910SP	Lane 10 Only, Custom	\$196/ea

### LJ & TJ TAKE OFF BOARD MARKERS

- Guides athletes to the horizontal jumps take-off board
- Made of safe collapsible plastic material

730310 \$113/set



### HORIZONTAL DISTANCE INDICATOR BOARDS

- Visual gauge of jump distance
- Made of safe collapsible plastic material
- Lightweight for easy transportation and storage
- Custom graphics available for additional charge

730721	LJ Boards English (16'-30')	\$518
730722	LJ Boards Metric (5m-9m)	\$518
730741	TJ Boards English (38'-55')	\$631
730742	TJ Boards Metric (12m-17m)	\$631

### BATONS

Individual	\$4	Set of 8	\$30
43101	Gold	431018	Gold
43102	Orange	431028	Orange
43104	Silver	431048	Silver
43105	Red	431058	Red
43106	Purple	431068	Purple
43107	Green	431078	Green
43108	Blue	431088	Blue
43109	Black	431098	Black
433	White Plastic	430	Assorted



### GILL® DISTANCE MARKERS

- Lightweight durable plastic material
- Stable 3-sided design provides 360 degree visibility
- 18" tall letters
- Custom graphics available\*

Individual Markers \$166  
Individual Markers with Graphics\* \$190

730912	12m/39'	730930	30m/98'
730914	14m/46'	730940	40m/131'
730916	16m/52'	730950	50m/164'
730918	18m/59'	730960	60m/197'
730920	20m/66'	730970	70m/230'
730922	22m/72'	730980	80m/262'
730924	24m/79'	730990	90m/295'

\*Add "SP" to end of part number. Example: 730912SP



### SCHOLASTIC DISTANCE MARKERS

- Ultra light expanded vinyl material
- 13" x 16" with quick stack & light carry characteristics
- 11" letter height

941 Set of 13 \$543

Individual Markers	\$43
941030	30"
941035	35'
941040	40'
941045	45'
941050	50'
941055	55'
941060	60'
941100	100'
941120	120'
941140	140'
941160	160'
941180	180'
941200	200'



**TEAR TAG NUMBERS**

- Made of Tyvek® material for unsurpassed durability
- 7 ½" x 7 ½" numbers feature a 3 ¼" numeral and 2" detachable tag
- Sets of 100

92300	#001-100	\$43
92301	#101-200	\$43
92302	#201-300	\$43
92303	#301-400	\$43
92304	#401-500	\$43



**CUSTOMIZED COMPETITOR'S NUMBERS**

- Feature your school name and/or event
- Made of Tyvek material for unsurpassed durability
- Sets of 100

730400	5 ½" x 7 ½"	\$35/set
730410	7 ½" x 7 ½" * * with Detachable Tag	\$42/set



**HIP NUMBERS**

- Necessary for photo finish timing
- 3 ½" digit on a 4" x 3" label
- No-residue adhesive labels

921	Hip Numbers 1-9 (25 of each)	\$25/set
922	Hip Numbers 1-18 (25 of each)	\$39/set

**SAFETY PINS**

910	144 ct.	\$12
91010	1440 ct.	\$55

**COMPETITOR'S NUMBERS**

- Made of 100 lb 'Tuff Tear' paper tag stock
- 5 ½" x 8 ½"
- Sets of 100



Competitor's Numbers		\$17/set	
900	#001-100	903	#301-400
901	#101-200	904	#401-500
902	#201-300	909	#901-1000

**INDIVIDUAL HIP NUMBERS**

Sets of 100		\$12		Rolls of 250		\$23	
92101	#1	92110	#10	92201	#1	92210	#10
92102	#2	92111	#11	92202	#2	92211	#11
92103	#3	92112	#12	92203	#3	92212	#12
92104	#4	92113	#13	92204	#4	92213	#13
92105	#5	92114	#14	92205	#5	92214	#14
92106	#6	92115	#15	92206	#6	92215	#15
92107	#7	92116	#16	92207	#7	92216	#16
92108	#8	92117	#17	92208	#8	92217	#17
92109	#9	92118	#18	92209	#9	92218	#18

**BEST VALUE!**



**SPIKE KIT**

Storage case and 1500 spikes

- 4 x 842 spikes
- 3 x 840 spikes
- 2 x 83602 spikes
- 2 x 83601 spikes
- 2 x 843 spikes
- 2 x 838 spikes
- 1 x 846 t-handle wrench

850 \$188



**STEELEX SPIKES**

- Case hardened steel with blue coat provides extreme durability and extended life
- Hex-base for easier installation and removal
- Bags of 100

83500	¼" Spike Wrench	\$12
83511	Spikes: ⅙"	\$16
83512	Spikes: ⅜"	\$16
83513	Spikes: ½"	\$16
83514	Spikes: ⅝"	\$16



PYRAMID    NEEDLE    BLANK

**SPIKES**

Bags of 100, unless otherwise noted

842	Pyramid: ¼"	\$12
8401	Needle: ⅙"	\$12
83601	Needle: ⅜"	\$12
838	Needle: ½"	\$12
839	Needle: ⅝"	\$12
840	Pyramid: ⅙"	\$12
83602	Pyramid: ⅜"	\$12
841	Pyramid: ½"	\$12
843	Pyramid: ⅝"	\$12
844	Pyramid: ⅞"	\$12
848	Blanks	\$12
837	Javelin: 1" (20 ct.)	\$12



**SPIKE WRENCHES**

845	3-Way	\$5.25
846	T-Handle	\$13
849	Spike Gauge	\$31





## 45W MEGAPHONE

45W Megaphone with range of up to 800 meters.  
Requires 10 "D" batteries (17 hours of use. Not included).

731      \$499

## ELECTRONIX STARTING DEVICE

- Battery operated starting pistol eliminates the need for blanks
- Pistol comes with auxiliary cable and case
- Strobe light tip flashes when the gun is fired to offer a visual signal for hand timing
- Uses three "AA" batteries (not included)
- Connects to a megaphone or speaker to sound (not included)
- *FinishLynx and Eagle Eye compatible!*

E39846      \$248



## STARTERS SLEEVE

Highly visible from any part of the track. Bright orange with elastic at both ends for a sure fit.

423      \$10

## STARTING BLANKS

42701	.22 Cal. Crimped (100 rds.)	\$46
429	.32 Cal. Gator Blanks (50 rds.)	\$69
42801	.32 Cal. Crimped (100 rds.)	\$102
39603	Pyro Bright Shells (50 rds.)	\$65



## ALFA COMPETITION STARTING PISTOLS

- Zinc-aluminum frame finished in rust resistant nickel
- High strength heat-treated steel parts promise trouble free usage
- Bright orange grips and barrel cap eliminate confusion with a firearm
- Rugged and reliable with swing out 6-round cylinder for easy load and unload
- *Limited Lifetime warranty*

425	.22 Cal. Pistol	\$350
426	.32 Cal. Pistol	\$360



## GILL® COMPETITION STARTING PISTOLS

- Inexpensive yet durable starting pistols
- Feature free spinning cylinder necessitating to cock the hammer before firing
- Holds 8 rounds

42510	.22 Cal.	\$125
42610	.32 Cal. (holds 5 rds.)	\$134

# TIMEKEEPING FOR ANY SIZE EVENT

## ULTRAK L10 MULTI-LANE TIMER

- Compatible with Hytek Meet Management Software
- Times races with up to 10 lanes
- Times road races with up to 8,000 participants
- Prints bib number, lane, place, and time
- Includes linkgate, eliminating tangled cords to L10
- Includes Windows interface and 2 rolls of paper
- **2 year warranty**

37932	8-Lane Timer	\$847
37934	Extra Button	\$28
37935	Paper Refills (3)	\$33



## SEIKO S149 STOPWATCH WITH PRINTER

- 300 dual split memory
- Saves multiple events into memory
- Large-sized 3 line display
- Auto start function
- Prints 13 digits per line at 1.5 per second
- Battery life indicator
- Includes 2 rolls of paper
- **3 year warranty**

37801	Stopwatch and Printer	\$557
37805	Paper Refills (5)	\$15



## ROBIC SILVER 2.0

- Event, lap or split timing
- 1/100 second precision to 10 hours
- Two finish time memory recall
- **1 year warranty**

37923 \$22



## ULTRAK 310

- Functions: start, stop, reset
- Measures 10 hours
- **3 year warranty**

33106 Set of Six \$63



## ROBIC SC-505W

- Twelve (12) memory recall
- Lap, split or single event timing
- 1/100 second resolution to 24 hours
- **1 year full factory warranty**

37603	Single	\$35
37604	Set of Six	\$204



## ROBIC SC-606W

- 50 dual split memory recall
- Lap, split or dual split timing
- Multi-function countdown timer; stop, repeat or count-up modes
- **1 year full factory warranty**

37602 \$45



## ULTRAK 830 HEAT INDEX

- Accurately calculates temperature, humidity, heat index and dew point
- 30 dual split recallable memory
- Measures to 10 hours with 1/100 second resolution
- Solar powered with back-up lithium battery
- **5 year warranty**

3830 \$49



**BEST SELLER!**

## ULTRAK 495

- 100 dual split recallable memory
- Measures up to 10 hours
- Continuous display of event time
- Allow for split in recall mode
- Water resistant
- **5 year warranty**

37904	Black	\$54
37904Y	Yellow	\$54



## ROBIC SC-899

- Up to 540 memory recall
- 3 fully loaded time keeping modes
- 1/100 second precision to 1 hour
- Speed timer in mph/kph
- On-demand EL backlight for low light or no light use
- Lithium battery
- **1 year warranty**

37611 \$75



## ULTRAK BTS - BLUETOOTH

- Compatible with both Apple and Android smartphones
- 750 dual split memory recall, measuring to 10 hours in 1/100 second precision
- Countdown timer, pacer, stroke frequency and calendar functions
- **5 year warranty**

37912 \$118

## TRACK ACCESSORIES

**NEW!**

### VICTORY PODIUM (8 PIECE SET)

- Frame constructed with 2" x 2" black steel
- 8 individual stands allow for quick storage
- Each stand has a 39" x 39" polyboard grip floor
- Podium face is wrapped with a 19oz vinyl for cascading customization across the front of all 8 stands

990CXXSP \$8875



### VICTORY PODIUM CART

- Steel construction with durable powder coat
- 8" never-flat rubber casters for easy movement over rough terrain
- Holds all 8 Victory Podium stands

991 \$825



E39917



### FINISH LINE TAPE

- Lightweight and easy to break
- 50 yd roll

974 \$5.25



### STARTER'S ROSTRUM

- Provides starting official with enough height to view all lanes
- Stable design for safety

860 \$920



E39918

### CAMERA MOUNT POLE

- Custom Height Settings
- Durable powder coat finish

E39917 Portable \$1135

E39918 Ground Sleeve \$1135



### TIMERS AND JUDGES STAND

- Holds 10 people seated or 20 standing
- Five rows of 48" long steps
- Rail support along back for safety
- Red enamel finish with galvanized seats, footrests and backrest
- Easy mobility provided by 8" diameter wheels on back

995 \$1245



# TRACK MAINTENANCE



## 3-LANE TRACK GATE

- Discourage joggers from using three inside lanes causing premature and uneven wear
- Easy lift and rotate to allow training on inside lanes
- Locks into place
- Includes ground sleeve
- Available in custom color, see chart on page 87

8540	3-Lane Track Gate	\$1505
8540CXX	3-Lane Track Gate; color	\$1655
8540P	Track Gate Post Padding	\$132



## CROSSOVER ZONE®

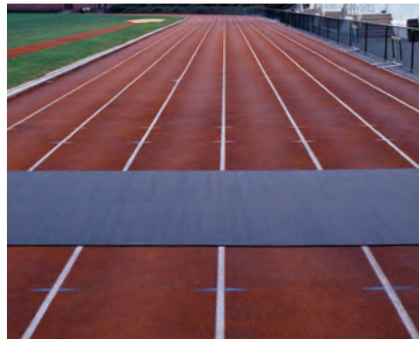
- Lighter and easier to handle than other 'conveyor belt rubber' systems
- Protects against steel tipped cleats, shoes and equipment wheels
- Rain drains through

493667	7.5' x 30'	\$510
493668	7.5' x 40'	\$610
493663	15' x 30'	\$725
493664	15' x 40'	\$880
493651	15' x 75'	\$1325
493652	15' x 100'	\$1600
493653	15' x 125'	\$1975

## TRACK REPAIR KITS

- Repair worn areas of track or field event area
- Includes 18.5 lb of rubber granules and 1 gallon of single-solution, no-mix polyurethane adhesive
- Approximate 11 sq ft coverage

8700	Black Repair Kit	\$494
8701	Red Repair Kit	\$494
8702	Royal Blue Repair Kit	\$494
8703	Green Repair Kit	\$494



## ROLLOUT RUNWAY

- Install quickly over worn runway or create a runway where none exists
- No bonding necessary, but can be done if required
- Custom Length (25' minimum) (no returns)

49036	10mm x 36"	\$8/In ft
49048	10mm x 48"	\$10/In ft
49136	12mm x 36"	\$9/In ft
49148	12mm x 48"	\$12/In ft

## NEW!

## SAND PIT LEVELER

- 10' long steel leveler smooths the sand in one pass
- Two 40" long wired handles
- Adjustable guides glide the leveler across the pit
- Powder coated in architectural gray

740 \$360



QUICKIE SAND PIT BROOM

453 \$50



SURFACE ROLLER

452 \$126



PIT RAKE

451 \$90



PIT SHOVEL

450 \$47

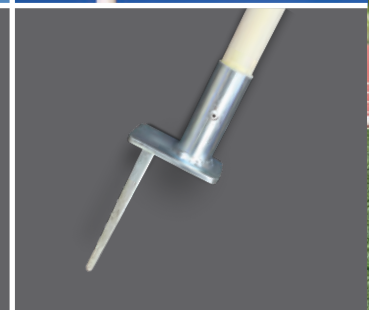
## CROSS COUNTRY KIT

Includes: 24 chute posts, 2-110' lengths of chute rope with pennants, 9 directional flags (3 red, 3 blue, 3 yellow) and 9 flag poles.

960	Complete Kit	\$567
961	4' Chute Post	\$13/ea
962	Chute Rope and Pennants (110')	\$25
9650	Flag Pole, Red Flag (Left Turn)	\$40
9660	Flag Pole, Blue Flag (Straight)	\$40
9670	Flag Pole, Yellow Flag (Right Turn)	\$40



961



## TURF CHUTE POST

- 12 lb non-invasive chute posts are ideal for turf or golf course

968	Turf Chute Post	\$60/ea
962	Chute Rope and Pennants (110')	\$25

## CROSS COUNTRY FINISH LINE BANNER

- Heavy duty vinyl banner attaches to fiberglass uprights
- Width is adjustable from 6'-12'
- Clearance height is 7'

969 \$325

## CC PACE WHEEL

- Find your athlete's recent race/time trial in the 'Current Fitness' window and that's it!
- Pace wheel reveals aerobic base training pace, marathon race pace, lactate threshold pace, Vo2 max development intervals, and running economy repetitions

998 \$17



## DISTANCE MEASURING WHEEL

- Handle collapses for easy storage
- Lightweight, durable construction
- Measures up to 10,000 feet
- English Units Only

9703 \$136



## ELECTRONIC MEASURING WHEEL

- Durable long-lasting steel frame
- Electronic 7-digit LCD readout is backlit for low light usage
- Patent-pending 'thumb-up' grip ensures less wrist strain and superior control

9701 \$324



## DUAL XC MEASURING WHEEL & COURSE MARKER

- Measure and mark simultaneously
- Lightweight tool features a trigger under the pistol grip
- Trigger activates spray paint (not included)
- English units only

9702 \$192







TENT SHOWN: 955215 Tent Canopy, 955210S Side Wall (2), 955215S Side Wall, 955201 Custom Graphics

### IMPACT TENTS

- Commercial grade steel frame
- 500 denier polyester canopy and walls
- Water, UV light, and fire resistant
- Roller bag: 600 denier polyester with scuff resistant and waterproof finish
- Tent stake kit and dust coverbag included
- Sidewalls, roller bags, and graphics sold separately

### COLORS



### TENT CANOPY

955210	10' x 10' Tent Canopy	\$494
955215	10' x 15' Tent Canopy	\$661
955220	10' x 20' Tent Canopy	\$822

### SIDE WALL

955210S	10' Solid Side Wall	\$98
955215S	15' Solid Side Wall	\$129

### ROLLER BAG

955210B	10' Tent Roller Bag	\$66
955215B	15' Tent Roller Bag	\$98
955220B	20' Tent Roller Bag	\$108

### CUSTOM GRAPHICS

Stand out from the crowd with custom screen printed graphics available in 1 to 5 locations! Tent graphic worksheet and vector graphics are all that is needed to show your team pride today! *Price covers 1 to 5 locations, per logo, per color.*

955201	Graphic 10" x 100"	\$231
955202	Graphic 40" x 60"	\$301
955203	Graphic 50" x 90"	\$385

### ACCESSORIES

9552WB	Weight Bags (4) (Recommended)	\$46
--------	-------------------------------	------



### TOTE BASKET

809	\$19
-----	------



### BOOKS

98901	T&F/XC Rules Book	\$12
98902	T&F Scorebook	\$20



### STRIKEALERT

- Provides warning for strikes as far away as 40 miles
- Audible alarm and corresponding LED light illuminates to warn you of strike
- Comes with belt clip and runs on single AA battery for up to 100 hours

ELD1000	\$153
---------	-------



### OFFICIALS' FLAGS

- Highly visible heavy duty nylon flag with plastic handle
- Flags measure 14" x 13"

730270	Red/White	\$13
730271	Yellow/White	\$13



TRAIN  
FOR  
WHAT  
YOU WANT



***TRAINING***

## PLYOMETRICS



### STEEL PLYOBXES

- 1" square steel tubing
- Plywood top platform with 10mm rubber surface
- Anti-skid rubber on base corners prevents slipping and protects floors
- Tapered design allows for stacking and stability

TA3060	6" Plyobox	\$113
TA312	12" Plyobox	\$127
TA318	18" Plyobox	\$142
TA324	24" Plyobox	\$155
TA330	30" Plyobox	\$170
TA336	36" Plyobox	\$184
TA342	42" Plyobox	\$197
TA301	4pc. Plyobox Set (12", 18", 24" & 30")	\$577
TA300	6pc. Plyobox Set (12", 18", 24", 30", 36" & 42")	\$946



### LAUNCH PAD

- Allows for more jumps per session
- Steel construction with welded support braces
- Synthetic track material on jump surface
- Track spikes can be installed to ensure no slipping if needed

TA1921 \$788



BEST SELLER!



### PLYO RUNWAY MAT

Surface reduces stress of impact on joints and muscles during explosive training sessions.

TA303 3'W x 6'L x 1/4" thick \$101



BEST SELLER!

### ARCHED JUMP BOX

- Convex jumping box made of lightweight steel that is easy to carry to and from practices
- Covered in synthetic track material to simulate the same feelings as your track and runways
- 8" high in the middle by 30" wide and 47" long

TA193 \$668



### SOFT PLYOBXES

- Standard 28" x 28" blocks
- 3" block is built with 2.2# density polyethylene foam, other sizes with 1.8# which provides stability, shock attenuation, and performance
- Secured for stacking with industrial strength Velcro®
- Durable vinyl cover with two reinforced handles for portability
- Each box weighs less than 28 lb

TA203	3" Soft Plyobox	\$122
TA206	6" Soft Plyobox	\$166
TA212	12" Soft Plyobox	\$239
TA218	18" Soft Plyobox	\$334
TA224	24" Soft Plyobox	\$410
TA225	Set of 5, 1 of Each Size	\$1235



### POWER PAD

- Low-impact, energy absorbing foam pad
- 48"L x 48"W x 24"H

TA194 \$870



### FLAT JUMP PLATFORM

- Made of lightweight aluminum and covered with synthetic track material
- Easy to transport between practices
- Track spikes can be installed to ensure no slipping if needed
- Platform is 5" x 34" x 19"

TA198 \$446





**POWERMAX® VERSA-HURDLE**

- Built-in safety feature causes the hurdles to collapse upon impact
- Adjustable from 12" to 42"
- 18 gauge tube steel with durable gate board

100	Hurdle	\$44/ea
101	Versa-Hurdle Bag	\$24



**FOAM TRAINING HURDLE**

- Ideal training hurdle made of forgiving foam
- Heavy enough to remain upright, yet light enough to be completely portable
- Durable vinyl covering allows for indoor and outdoor use
- Heights: 30", 33", 36", & 39"

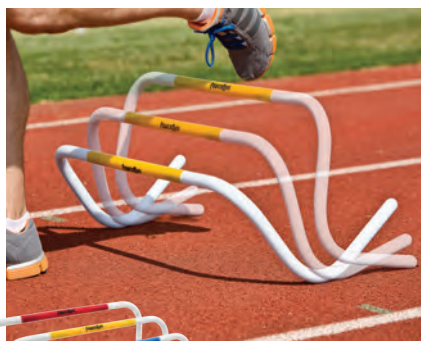
409 \$180



**SMART HURDLE**

Smart Hurdles have a three point base for superior stability on all surfaces. Smart Hurdles are durable, lightweight, and easy to carry.

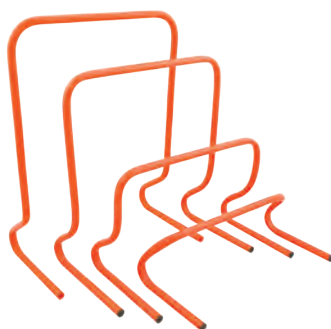
TA18544	21-36" Adjustable Hurdle	\$89
TA18545	27-42" Adjustable Hurdle	\$99



**AGILITY ROCKER HURDLES**

Weighted base allows hurdles to rock back into the starting position.

TA1676	6" Hurdle	\$22/ea
TA1678	8" Hurdle	\$22/ea
TA16710	10" Hurdle	\$23/ea
TA16712	12" Hurdle	\$23/ea



**STEP HURDLES**

Constructed of durable, lightweight PVC tubing

TA167	6" Hurdle	\$13/ea
TA1675	6" Hurdles (5)	\$64/set
TA166	12" Hurdle	\$14/ea
TA1665	12" Hurdles (5)	\$68/set
TA16618	18" Hurdle	\$19/ea
TA166185	18" Hurdles (5)	\$93/set
TA16624	24" Hurdle	\$22/ea
TA166245	24" Hurdles (5)	\$107/set



**VARIABLE HEIGHT STEP HURDLES**

The 2-in-1 hurdle can quickly and easily be adjusted to 2 heights (8"-12") and folds flat for storage.

TA1662	2-in-1 Hurdles	\$14/ea
TA16625	Set of 5 with Bag	\$76
TA16601	Mesh Carry Bag (Holds 5 Hurdles)	\$7.50

The 3-in-1 step hurdle adjusts from (6"-12"-18") and may be disassembled for storage. perform lateral agility moves, forward moves for speed, or plyometrics jumps.

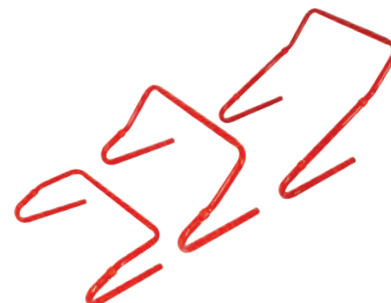
TA1663	3-in-1 Hurdles	\$38/ea
TA16635	Set of 5 with Bag	\$192
TA16601	Mesh Carry Bag (Holds 5 Hurdles)	\$7.50



**STEP-UP BOX**

Perform weighted step-ups safely on this adjustable box. Four height adjustments: 14", 16", 18", and 20". Reinforced plywood top is 20" x 28" and coated with artificial turf. Ships assembled.

WE160 14"H x 29"W x 28"L, 53 lb \$450



## AGILITY TRAINING

### POWERMAX® WEIGHT VEST

- Holds soft double stitched ½ lb weights
- Purchase additional ½ lb packs to fill short vest up to 20 lb or the long vest up to 40 lb
- Moveable shoulder straps 2 ¾" wide with 5 ½" of adjustability
- Short vest fits up to a 40" chest/waist, 18" L x 16" W, long vest fits up to a 57" chest/waist, 23" L x 16" W

TA1226	Short 10 lb Vest	\$109
TA1227	Long 20 lb Vest	\$174
TA1228	10 weight packs (5 lb)	\$31
TA12281	20 weight packs (10 lb)	\$59



TA1226



TA1227



### POWERMAX® WEB LADDER

- Sewn nylon ladder is 16' L x 18" W
- Slats every 18"
- Includes storage bag and 4 ground stakes

TA1696 \$32



### POWERMAX® AGILITY LADDERS

- 15' ladder comes in two 7' 6" sections with 10 slats total
- 30' ladder comes in four 7' 6" sections
- Easily connect with other ladders
- 20" wide with 18" between slats, not adjustable
- Includes 1 agility ladder & carry bag

TA1691	15' Agility Ladder	\$58
TA1681	30' Agility Ladder	\$95



### POWERMAX® AGILITY DOMES

- Multicolored domes are ideal to mark an agility course
- Durable impact resistant polyethylene
- Includes 40 domes (10 in each color) and storage rack

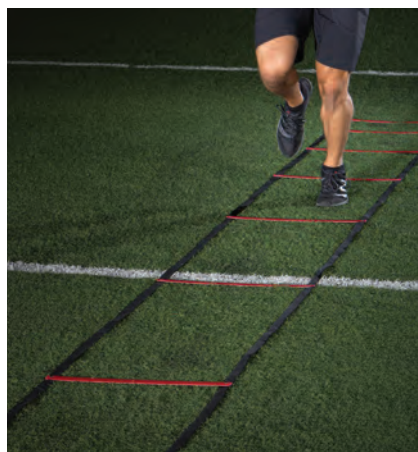
TA1852 \$81



**SMART INDOOR LADDER**

- 15' Ladder
- Non-slip rubber, great for gym floors
- Rolls up for storage

TA1685 \$86



**POWERMAX® ACCELERATION LADDER**

- Incrementally increase stride length and frequency
- Increasing stride spacing from 12" to 69"
- All red rungs, black sides, and a carry bag

TA168 37"6" X 20" \$82



**AGILITY POLES**

- 5' tall poles force athletes to maintain posture
- Includes 4 bases and 4 poles
- Add sand or water to base for additional stability

TA1850 \$102



**AGILITY RINGS**

- Create patterns to challenge footwork or set a pattern of acceleration
- Can be used on a variety of surfaces, ideal on textured surfaces

TA1693 Set of 12 \$57



**AGILITY DOTS**

- Dots are easy to store and transport
- Easy to see bright colors

TA1694 Set of 6 \$30



**SPEED ROPES**

- Stainless steel cable encased in plastic
- Ball bearing in handles for quick turnover
- Fixed length
- Includes carry bag for easy storage
- Padded handles for comfort

TA128 9' Speed Rope \$18  
TA1281 10' Speed Rope \$20

**BEGINNER SPEED ROPES**

- These PVC ropes feature lightweight plastic handles and high-spin swivels

TA1271 7' (Green) \$6.50  
TA1272 8' (Blue) \$6.50  
TA1273 9' (Red) \$6.50  
TA1274 10' (Yellow) \$6.50



## SPEED DEVELOPMENT

### MAX BELT

- Features a 3" wide padded heavy-duty Cordura nylon
- Reinforced stitching
- Multiple nylon attachment loops
- Stainless steel hardware

TA1500 S-M (24" - 32" waist) \$34

TA1501 L-XL (33" - 42" waist) \$36

TA1503 XXL (43" - 52" waist) \$37



### BULLET BELT™ SYSTEM

- For resistance to improve starting and acceleration mechanics
- Hook & loop closure for easy release giving a contrast workout from resistance to free running
- Adjustable belt

TA138 \$119

### POP BELT™

- The Bullet Belt "Pop" release is the basic design in the Bullet Belt series
- Used to train explosive sport-specific skills

TA1383 \$71

### BULLET BELT SPEED PULLEY

This two-person over-speed trainer features a unique safety release if towed athlete cannot maintain pace. Comes with 30m of cord and a Bullet Belt universal web belt.

TA1381 \$195



### RESISTANCE TETHER

- Improve speed with resistance running
- Harness attaches to 10' long nylon web cord with handle
- Includes nylon cord and a 3" wide hook & loop closure belt adjustable to 42" waist, and carry bag

TA150 \$48

### DUAL RESISTANCE TETHER

- One athlete runs while the other provides resistance
- Includes nylon strap attached to two 3" wide hook & loop closure belts adjustable to 42" waist, and carry bag

TA1521 \$50

### TIRE TETHER

- Can be used to drag tires of different sizes for varied workouts
- Includes nylon strap and hardware to attach tire, 3" wide hook & loop closure belt adjustable to 42" waist, and carry bag
- Tire not included

TA1384 \$57



**SPRINT START SLED**

- Unique design provides for clearance over and around virtually all starting blocks
- Olympic style weight plates may be added to increase resistance. Includes sled, 11' leads, and 3" wide hook & loop closure belt adjustable up to 42" waist
- Designed by University of Idaho head coach Tim Cawley

TA1541     \$348



**POWERMAX® SLED**

Provides lower body resistance that develops speed and strength for all athletes in all sports. Add the desired weight to determine resistance. Load up to 200 lb. 15" tall post fits 4 Olympic bumper plates. Includes sled, 11' lead, 3" wide hook & loop closure belt adjustable to 42" waist, and instructions. *Weights not included.*

TA154     Sled with Belt     \$178  
TA156     Sled with Shoulder Harness     \$184



**LOW DRAG SPEED SLED**

- Ideal sled to add incremental resistance to your athletes
- Easy storage
- Weighs less than 7 lb each
- Includes waist belt, nylon leads, carabiners and sled

TA157     \$113



**POWERMAX® VARIABLE RESISTANCE CHUTE**

The PowerMax VR Chute features a hook & loop closure baffle panel that can be opened or closed to achieve desired resistance. Open the baffle for reduced resistance or close to increase it.

TA163M     S/M     Gray     \$68  
TA163XL     L/XL     Black     \$82



**TC-TIMER SYSTEM**

The TC-Timer is a wireless timing device that enables athletes and coaches to measure time, speed, count repetitions, input test data and save it all in the TC-Timer memory.

- Sends radio transmissions up to 1,000 feet
- Accurate to the 100<sup>th</sup> of a second
- Equipped with 5 different radio frequencies allowing multiple systems to be used in the same area
- All components fit neatly into a small lumbar pack

E38720     TC Timer System     \$1630  
E38721     Pair, Additional TC Gates     \$891  
E38710     Speed-Trap1 Timing System     \$677



**POWERMAX® PUSH/PULL SLED**

The PowerMax Push/Pull Sled is great for versatility and adjustability in speed training.

- USA made 11 gauge steel frame sled
- Space-saving design that is less than 7" high when folded
- Replaceable/removable runners for use on a variety of surfaces
- Quick release pins for fast set-up and breakdown
- Adjustable width push posts (12-21" W x 32" H) and multiple push/pull options
- Sled weighs 45 lb (empty)
- Holds up to 300 lb, center post fits four 45 lb bumper plates

TA155     Sled w/Belt + Harness  
24" W x 35" L x 35" H (w/post)     \$506



## SPEED DEVELOPMENT



### DUAL SPEED TRAINER

- Two-person assisted overspeed and resistance running kit
- Overspeed training provided to the rear athlete increases both stride length and frequency.
- Includes 20' latex tubing, two 3" wide hook & loop closure belts adjustable to 42" waist, and carry bag.

TA164	20' Medium Tubing	\$133
TA165	20' Heavy Tubing	\$140



### DYNAMIC TRAINER

- Keeps resistance around the hips or torso
- 10' elastic tube is covered with nylon webbing, can stretch up to 30'

TA158 \$150



### POWERMAX® HIP FLEXOR

- Strengthen hip flexors and upper quadriceps
- Offers resistance to muscle groups during any training session and maintains athlete's pure running form
- Up to three ¾ lb weight bars attached to thigh belts
- Includes thigh belts, six ¾ lb weight bars, 3" wide hook & loop closure belt adjustable to 42" waist, and carry bag

TA1511 \$91



### POWERMAX® SAND BAG SET

- Leak proof inner bags hold 20 lb of sand securely (sand not included)
- Inner bags are pre-marked for easy measurement
- Five strategically placed padded handles
- Set includes inner and outer bags, holds up to 80 lbs

TA12241 \$120



### SINGLE-SIDED RACK

- Powder-coated steel rack holds up to 5 balls

TA129 52" x 11" x 14" (7 lb) \$127



Fits Powermax® V2 Medicine Balls

### DOUBLE-SIDED RACK

- Powder-coated steel rack holds up to 10 balls

TA1292 63" x 22.5" x 9" (27 lb) \$172



# CORE STRENGTH



## POWERMAX® V2 MED BALLS

- 18 oz. flexible moisture resistant polyurethane shell textured for grip
- Hand-sewn casing design and expert ball construction
- Dimensionally stable, balanced, and maintains the impact absorbing properties
- **One year warranty**

TA1362	6 lb	Ø 14"	\$87
TA1363	8 lb	Ø 14"	\$92
TA1364	10 lb	Ø 14"	\$98
TA1365	12 lb	Ø 14"	\$106
TA1366	14 lb	Ø 14"	\$111
TA1367	16 lb	Ø 14"	\$117
TA1368	18 lb	Ø 14"	\$122
TA1369	20 lb	Ø 14"	\$128



## POWERMAX® RUBBER MED BALLS

Synthetic rubber balls suitable for all sports. Can be used indoor and outdoor. Color coded for easy weight identification.

TA106	1K Purple	Ø 6.5"	\$27	TA111	5K Blue	Ø 10.5"	\$56
TA108	2K Yellow	Ø 7.5"	\$34	TA112	6K Orange	Ø 11"	\$61
TA109	3K Green	Ø 9.5"	\$40	TA131	7K Gray	Ø 11.5"	\$74
TA110	4K Red	Ø 9.5"	\$49	TA132	8K Black	Ø 12"	\$86



## NON-BOUNCE MED BALLS

Material is made from durable PVC.

TA13204	4 lb	Ø 9"	\$18
TA13206	6 lb	Ø 9"	\$20
TA13208	8 lb	Ø 9"	\$24
TA13210	10 lb	Ø 9"	\$30
TA13215	15 lb	Ø 9"	\$39
TA13220	20 lb	Ø 9"	\$42
TA13225	25 lb	Ø 9"	\$62
TA13230	30 lb	Ø 10 1/4"	\$71
TA13240	40 lb	Ø 10 1/4"	\$101
TA13250	50 lb	Ø 10 1/4"	\$140



## POWERMAX® GRIP BALLS

Durable rubber shell with filler and comfortable built in rubber handle. Will not harm rubber floors. Balls are Ø 8" (diameter), grip is 1" x 1 1/4".

TA4002	2 lb	\$36
TA4004	4 lb	\$42
TA4006	6 lb	\$52
TA4008	8 lb	\$62
TA4010	10 lb	\$69



## POWERMAX® SWING BALLS

- For swinging, slamming, and rotation drills
- Rope: 1/8" nylon with a 30" handle from stopper to end

TA1332	2K Yellow	Ø 7.5"	\$71
TA1333	3K Green	Ø 9.5"	\$84
TA1334	4K Red	Ø 9.5"	\$99
TA1335	5K Blue	Ø 9.5"	\$117

## BODYWEIGHT TRAINING

	Knotted End Hemp	Vinyl Boot End Collegiate	Ball/Knotted Hemp	Vinyl Boot End Dacron	Boot/Knotted Dacron
12' Long	\$349 00113120	\$285 00199012	\$822 00115120	\$333 00118120	\$674 00119120
16' Long	\$360 00113160	\$297 00199016	\$991 00115160	\$349 00118160	\$855 00119160
20' Long	\$372 00113200	\$306 00199020	\$1150 00115200	\$372 00118200	\$1015 00119200
24' Long	\$383 00113240	\$319 00199024	\$1325 00115240	\$394 00118240	\$1180 00119240



### HEMP CLIMBING ROPES

This 1-1/2" rope contains 12-18% mineral oil lubricant by weight for long life and is securely attached within a heavy-duty steel fitting for years of durability. Optional rubber knots anchored every 12". Collegiate ropes are finished with a vinyl boot.

### SOFT DACRON ROPES

Soft Dacron ropes are ideal for elementary physical education programs. The no-twist spun Dacron material is easier on hands than hemp ropes and will wear better than cotton. Hypoallergenic.

### ROPE ATTACHMENT METHODS



#### 3 1/2" OD PIPE CLAMP

XCLP97001002

\$18



#### STAPLE PLATE

10340000 For Wood Beams

\$24

10341000 For Concrete Beams

\$40



#### STEEL I-BEAM CLAMP

10100100 Fits ≤8" Beams

\$55

10100200 Fits ≤17" Beams

\$77

### ROPE ACCESSORIES



#### TAMBOURINE

3/8" lacquered plywood tambourine restricts climbing height. Clamp permits fast removal & easy adjustment.

00198000 \$158



#### ROPE HOIST

Hoist is complete with wall brackets, ceiling attachment, heavy-duty cord and weight. Installs easily, ready to use.

00104000 \$269



#### SAFETY GUARD

Safety guard prevents the rope from falling if a part fails or wears out.

00110000 \$150



### POWERMAX® CONDITIONING ROPES

Ropes help athletes with power generation, strength endurance, and increased cardio development.

- 1.5" or 2" Thicknesses with finished handles to prevent shedding and blistering
- Synthetic fibers
- Optional bracket fits up to 2.125" rope, made of .125" flat steel and round bar

TA1606 1.5" Synthetic Rope – 30' \$237

TA1607 1.5" Synthetic Rope – 40' \$279

TA1608 1.5" Synthetic Rope – 50' \$331

TA1617 2" Synthetic Rope – 30' \$263

TA1618 2" Synthetic Rope – 40' \$331

TA1619 2" Synthetic Rope – 50' \$377

TA1613 Rope Wall Bracket \$28





**MULTI-STATION WALL-MOUNTED CHINNING BARS**

- 10' long chinning bar with three stations
- Mounts 16" away from the wall
- 1" solid steel diameter grip with a durable zinc plated finish

00196013 10' 3 Piece Steel Chinning Bar \$664



**WALL-MOUNTED CHINNING BAR**

- 50" wide by 21" tall with 1" grip diameter
- Bar is 22" away from wall/ceiling
- 48" mounting centers
- Black powder coat finish
- *Hardware not included*

WE179 \$228



**PEG BOARD CLIMBERS**

- 1½" Thick gloss finished hardwood
- Rectangle has 11 holes spaced on 10" centers. Holes are arranged in 2 rows with staggered alignment
- Square has 16 holes spaced on 7½" centers in a 4 x 4 grid pattern
- Two ø1½" x 6½" wood pegs included
- Mount directly to the wall or use optional mounting brackets
- *Hardware not included*

00188 Rectangle 15" x 60" \$510

00189 Square 30" x 30" \$510

001881 Pair, Mounting Brackets \$151

001891 Pair, Wood Pegs \$25



**ADJUSTABLE CHINNING BAR**

- 1" Grip diameter
- Bar is 22" away from wall
- 48" Mounting centers
- Black powder coat finish
- *Hardware not included*

00197100 \$416



**AB BUSTER STRAPS**

- Improve core strength and stability with suspended core exercises
- Heavy duty woven nylon with steel grommets and carabiners
- Straps are padded with a washable brushed lining for comfort

WE242 \$97



## WEIGHT BARS & PLATES

### POWER BAR

- 86" Black oxide steel shaft
- Bright Zinc Plated Sleeve Coating
- 45 Lb weight
- 32 mm grip diameter
- 1200 Lb weight rating
- Lifetime warranty against bending

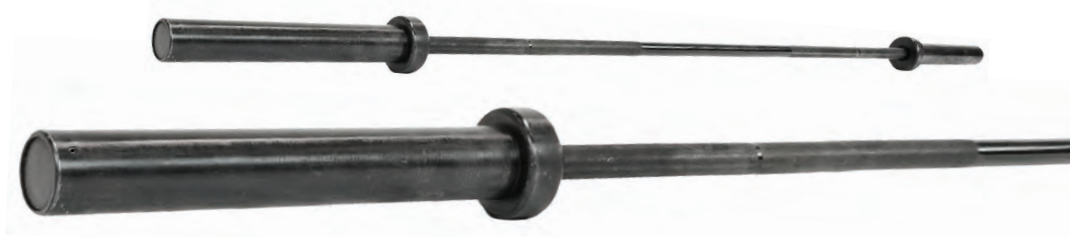
WT1203      \$372



### WOMEN'S HYBRID BAR

- 79" Carbon steel bar
- 33 Lb weight
- 25mm grip diameter
- 400 Lb weight rating

WT1216      \$349



### CAMBERED SQUAT BAR

This bar allows squats to be done in a more vertical posture, producing intensified quadriceps involvement. Cambered end design relieves much of the lower back stress normally associated with a back squat. All steel design with padded shoulder harness.

WT129      \$428



### PRO BAR WRAP PAD

- Protects shoulders and back during lifting exercises
- Black nylon cover with high quality foam insert
- 14" Long

WE310      \$18



### MANTA RAY

- Prevents painful pressure points during back squats
- Durable polyurethane material
- Quickly snaps onto the bar
- Distributes weight over a larger area

WE3111      \$65



### STING RAY

- Use the sting ray during front squats to relieve pressure on the shoulders
- Durable polyurethane material
- Quickly snaps onto the bar
- Distributes weight over a larger area

WE3112      \$65



### STEEL SPRING COLLARS

Traditional, functional steel spring collar

WT131      \$16

### SOLID RUBBER BUMPER PLATES

Bumper plates are the ideal tools for any lift from a standing position. Designed to impact the ground without creating damage to the floor, these new plates are thinner for those who wish to lift larger loads.

- 100% Rubber plates with solid steel insert
- Fit any olympic-style bar
- Colored plates feature colors to help guide weight selection
- Plates are sold in pairs
- Standard plate size 18" diameter



### ROLLING BUMPER STAND

- Rugged casters allow for easy transport
- Stores up to ten 45 lb bumper plates
- Removable center post for easy load/unload
- Laser cut 1/2" steel base

**WE528** 36"H x 24"W x 24"D, 25 lb **\$193**



### FLAT UTILITY BENCH

- Constructed of 11 gauge, 2" welded square steel tubing
- Firm Foam Padding with durable stitch-seamed vinyl
- Assembly Required

**WE100** 18"H x 16"W x 48"L, 32 lb **\$188**



### WRIST STRAPS

Provides support for Olympic lifts, overheadwork, and bench presses.

<b>WE31912</b>	12" Wrist Straps	<b>\$20/pr</b>
<b>WE31924</b>	24" Wrist Straps	<b>\$28/pr</b>

## JUMP TRAINING & TESTING



### STANDING LONG JUMP TEST MAT

- Non slip mat provides a soft landing surface that makes marking the distance of the jump easy
- Both English and Metric units
- Heavy enough to prevent any sliding, rolls up for easy storage
- Measures jumps to 10' 5"

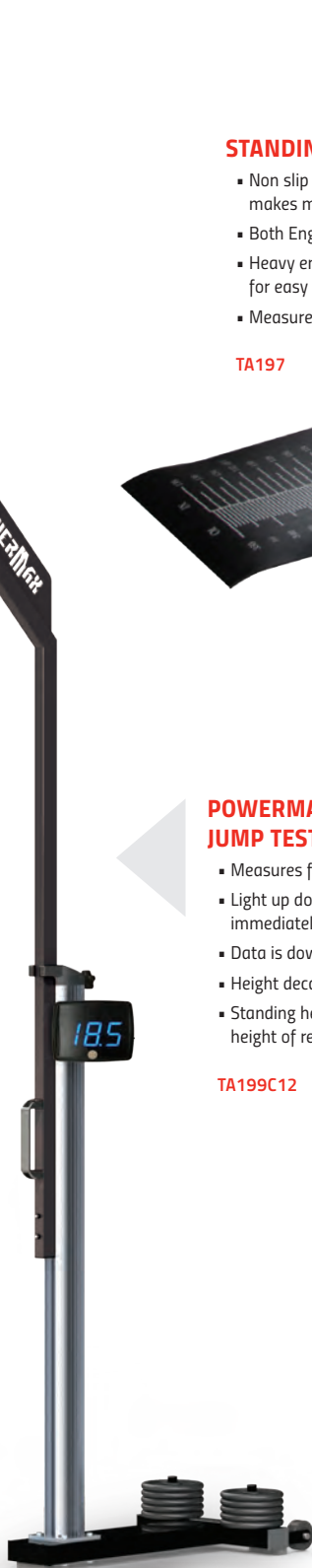
TA197 \$604



### POWERMAX® ELECTRONIC VERTICAL JUMP TESTER

- Measures from 7' to 12' in ½" increments
- Light up dots on the height scale and digital display immediately show the exact jump height
- Data is downloadable to any computer
- Height decal offers quick "zero" marking
- Standing height measuring strip helps establish base height of reach prior to jump

TA199C12 \$2925



### VERTEC MEASURING DEVICE

- An effective, easy-to-use jump training tool
- Measures from 6-12'
- Height scale and color coded vanes offer half-inch measurement for immediate feedback
- Handy, attachable rod to align or reset vanes

TA195 \$760





**STRIDE CHECKER**

- Improve stride length and frequency
- 30M long with segmented markings
- Usable on most surfaces
- Includes storage bag

TA1695 \$51



**COACH BEEPER**

- Digital electronic cadence beeper
- Helps a coach to work more exclusively with additional athletes
- Allows athlete to train more effectively
- Helps implement several critical training techniques to enhance speed and strength

TA145 \$1130



**POWERWHEEL**

Challenging unique exercises for your abs, obliques, back, hips and glutes

TA364 \$81



**PRO WRIST ROLLER**

- Most effective way to strengthen hands, forearms, and wrists
- Heavy 12" long  $\phi$ 1.25" Pipes
- Clip on attachment for standard plates

WE312 \$54



**POWERMAX®  
ADJUSTABLE ANKLE WEIGHTS**

- Made of stretchable neoprene
- Adjustable weight up to 5lb total
- 21" x 5.25" x 1/2"

TA1861 \$45/pr

## FLEXIBILITY & REHAB



### POWERMAX® STRENGTH BANDS

- Resistance determined by thickness & width
- 41" long, seamless latex rubber
- Layered construction helps prevent breakage
- Sold individually

TA17110	XX-Light 35 lb Resistance, .5", Red	\$13
TA17160	X-Light 50 lb Resistance, .75", Orange	\$20
TA17170	Light 65 lb Resistance, 1", Violet	\$23
TA17120	Medium 80 lb Resistance, 1.5", Blue	\$36
TA17130	Heavy 150 lb Resistance, 2", Green	\$49
TA17140	X-Heavy 175 lb Resistance, 3", Black	\$68
TA17150	Super 200 lb Resistance, 4", Yellow	\$84



### POWERMAX® MINI BANDS

- Great tool for warm-ups, hip muscles, and small intrinsic muscles
- 2" wide x 13" long

TA1741L	10 Light Bands (Red)	\$34
TA1741M	10 Medium Bands (Gray)	\$43
TA1741H	10 Heavy Bands (Black)	\$48



### 5" MASSAGE BALL

- Helps eliminate muscle knots, tension, and tightness
- Multi-directional roll to pinpoint specific muscles
- Two layer design with firm interior and soft exterior

TA1841 \$39

### POWERMAX® FITNESS BANDS

- Effective for rehab, fitness, flexibility, and training
- Boxed rolls can be cut to length
- 6" wide cut bands

TA1726	5 yd Roll, Light	\$17
TA1727	5 yd Roll, Medium	\$23
TA1728	5 yd Roll, Heavy	\$28



### POWERMAX® STABILITY BALLS

- Excellent for balance, abdominal work, and stretching
- Fabricated from durable vinyl, supports 500 lb
- Ships Deflated

TA1805	55 cm Ball (5' - 5' 8")	\$32
TA1806	65 cm Ball (5' 8"-6' 2")	\$35
TA1807	75 cm Ball (6' 2"+)	\$39



**ANKLE-FLEX STRAPS**

- Holds sprinter's foot flexed
- Improved ground strike efficiency

TA1485 \$28/pr



**STRETCH OUT STRAP**

- PNF stretching without a partner
- Eight 8" Handles allow a variety of stretches
- 62" Length x 4" Width x .5" Thickness

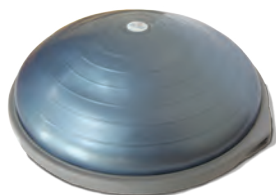
TA1781 \$6.50



**STRETCHRITE™**

- Increase tension by changing grip position
- Change or isolate the stretch by rotating foot inward or outward

TA1780 \$32



**BOSU® BALANCE TRAINER**

- Fitness / health professional version
- Includes program manual, training video, & free pump

TA1790 \$203



**36" POWERMAX®  
FOAM ROLLER**

- For advanced balance exercises or pressure massage
- Constructed of high density foam
- 6" Diameter x 36" Length

TA3620 \$37



**18" POWERMAX®  
2-IN-1 FOAM ROLLER**

- 6" Diameter x 18" Length high density EVA foam
- Removeable trigger point sleeve

TA1826 \$50



**THE STICK**

- Excellent tool for injury prevention and rehabilitation
- Used by professional athletic teams

TA1830 24" Stick \$60

TA1831 18" Stick \$47



**ROLL-UP EXERCISE MAT**

- Soft, durable foam with textured surface
- Roll-up for portability and storage
- 24" Width x 70" Length x .125" Height

TA304 \$25



**TRIGGER POINT GRID ROLLER**

- Grid foam roller with Distrodensity™ zones
- 5" Diameter x 13" Length

TA1835 \$50

**POWERMAX® BALANCE PAD**

- Soft eva foam material
- Great for balance & coordination activities
- 17" Length x 10" Width x 2 3/8" Height

TA1803 \$37







THE  
PODIUM  
AWAITS





**FACILITIES**



## TAKE-OFF BOARDS & CURBING

### PREPARE FOR TAKE-OFF WITH GILL BOARDS



#### ADJUSTABLE TAKE-OFF BOARD SYSTEMS

With the Gill Adjustable Take-Off Board Systems you get ease of installation, ease of use and dependable peak performance.

Gill Take-Off Board systems are the easiest and fastest boards to install in the market. **Complete system** comes with installation tray, adjustable folded aluminum base, reversible long lasting take-off board and foul board, and functional blanking lid ready to accept track surfacing.

- 8" take-off board and 4" foul board creates 12" system
- Exclusive easy-adjust leveling system for both horizontal and vertical axis
- Composite for longer lifespan
- Composite boards made of Polyboard®, an environmentally friendly, waterproof material that will not split or crack while offering jumpers great grip
- *Meets NFHS, NCAA and World Athletics specifications*

4350S	Complete NCAA System	\$1030
4351S	Complete World Athletic System	\$1070
P435007	Replacement 4" NCAA Foul Board	\$64
P435107	Replacement 4" World Athletics Foul Board	\$100
P435005	Replacement 8" Take-Off Board	\$162
P435205	Replacement 12" Take-Off Board	\$155
4352S	12" Take-Off Board and Tray	\$524
439	1 lb Plasticine Brick - Yellow	\$8

#### STANDARD 8" TAKE-OFF BOARD SYSTEMS

- Complete system: Installation tray, aluminum leveling board and reversible take-off board
- Composite for longer lifespan
- Composite boards made of Polyboard®, an environmentally friendly, waterproof material that will not split or crack while offering jumpers great grip
- Blanking lid sold separately
- *Meets NFHS and NCAA specifications*

444S	Complete Standard 8" Take-Off Board System	\$478
44421	Blanking Lid Assembly	\$304
44405	Replacement Take-Off Board	\$232







851A

**INTERNATIONAL TRACK CURBING**

- Heavy gauge aluminum design features upscale fluted dome-shaped top
- Curbing sections are notched at one end to allow easy drop in or removal of section
- Curbing supported by 1/2" tall ribbed feet for unencumbered drainage
- Optional pin kit available to keep curbing from shifting on track
- Permanent installation includes two anchor pins for every 20' section
- *Meets NFHS, NCAA and World Athletics specifications, World Athletics certified*

*Effective Dec. 1, 2018, all newly constructed or resurfaced indoor tracks to be surveyed for a curb must have regulation curbing in place for competition. (NCAA)*

**NON-PERMANENT INSTALLATION CURBING**

851A	Plain		\$11/ln ft
852A	Anodized		\$16/ln ft
852P	Powder Coated		\$14/ln ft
851P	Base Pins (12)		\$185/set

**PERMANENT INSTALLATION CURBING**

853A	Plain		\$12/ln ft
854A	Anodized		\$16/ln ft
854P	Powder Coated		\$16/ln ft

**CUSTOMIZABLE**

**Powder Coat**



*\*Gray and Black powder coat available in Gloss or Flat*



441TS

**19.5" TAKE-OFF BOARD SYSTEM**

- Complete System: Installation tray, aluminum base board, and reversible take-off board
- Composite for longer lifespan
- Composite boards made of Polyboard®, an environmentally friendly, waterproof material that will not split or crack while offering jumpers great grip
- *Meets NFHS specifications*

441TS	Complete HS System	\$537
4410S	Replacement 19 1/2" Take-Off Board	\$135



**CONVERSION BOARD**

- Convert a Gill 19 1/2" take-off board system to an 8" system
- Includes 8" composite take-off board, black vultrak, and baseboard

441C      \$348

## SAND PIT FORMS & COVERS

*Sand pit forms hold more than just sand, they hold value. With four different options of Sand Catcher locations and two practical Sand Catcher Cover options, you can design the horizontal jump facility that will perfectly meet your needs.*

*Choose from one of four sand catcher locations: no sides, two sides, two sides and back, or all four sides. Choosing Sand Catchers on the sides will cut unnecessary costs and eliminate potential trip hazards, providing more than ample storage space for overflow sand.*

*Choose from one of two Sand Catcher Cover systems: traditional grate and mat or Gill (exclusive) Recessed Lid. When you consider the main function of a Sand Catcher system is not to catch sand but to store it, the Recessed Lid system is rapidly becoming the choice of facilities worldwide, as it is designed to receive track surfacing to match your track facility. When coupled with the 730148 Aluminum Sand Pit Cover, a complete logical design emerges for your world class jumps facility.*

*No matter which combination you choose; with the Gill Functional-Form, you can rest assured that you have chosen the finest product (with the easiest installation) available.*

### FORM WITH RECESSED CATCHERS

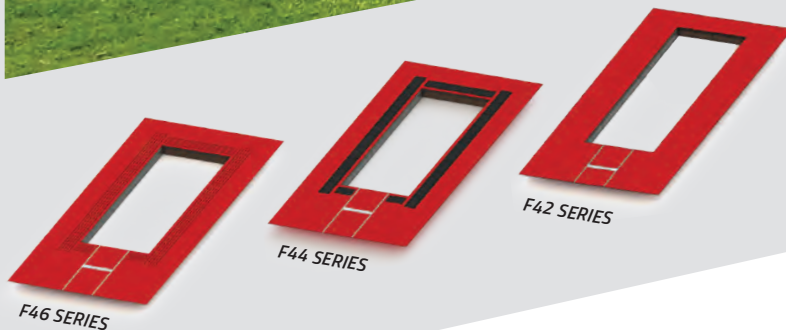
SIDES	FORM WITH RECESSED CATCHERS		
	Model	Length	Price
4 SIDES	F46225	25'	\$21040
	F46228	28'	\$22815
	F46231	31'	\$23640
3 SIDES	F46124	24'	\$17495
	F46127	27'	\$18325
	F46130	30'	\$20455
2 SIDES	F46023	23'	\$14665
	F46026	26'	\$16795
	F46029	29'	\$18090

### FORM WITH GRATE & MAT CATCHERS

SIDES	FORM WITH GRATE & MAT CATCHERS		
	Model	Length	Price
4 SIDES	F44225	25'	\$20095
	F44228	28'	\$22460
	F44231	31'	\$23180
3 SIDES	F44124	24'	\$16700
	F44127	27'	\$17495
	F44130	30'	\$19395
2 SIDES	F44023	23'	\$13240
	F44026	26'	\$14780
	F44029	29'	\$15370

### FORM WITHOUT CATCHERS

LEEDGE	FORM WITHOUT CATCHERS		
	Model	Length	Price
LEEDGE	F42023	23'	\$5800
	F42026	26'	\$6395
	F42029	29'	\$6625

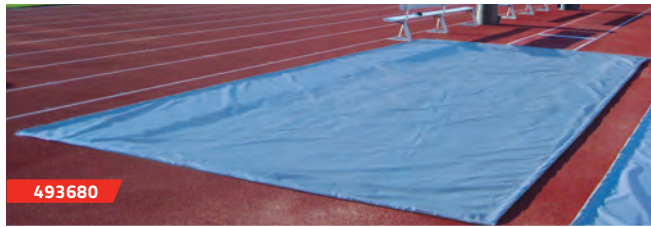


**ALL FORMS ARE 9' 8" WIDE**

**FAST INSTALLATION**

### READY-FIT ALUMINUM SAND PIT COVERS

F44023C	23' Cover	\$9105	F44026C	26' Cover	\$10295	F44029C	29' Cover	\$11480
F44124C	24' Cover	\$9515	F44127C	27' Cover	\$10705	F44130C	30' Cover	\$11890
F44225C	25' Cover	\$9925	F44228C	28' Cover	\$11115	F44231C	31' Cover	\$12300



493680

**COLORS**



**BALLASTED LJ/TJ SAND PIT COVERS**

- Exclusive Vipol Matrix mesh material or solid vinyl polyester
- Anchoring system: Vinyl wrapped galvanized steel chain perimeter
- Ballasted pit covers are custom sized and sold by the square foot (no returns)
- Dimension certification form must be submitted with order

493680	Mesh Vinyl	\$5.50/sq ft
493682	Solid Vinyl	\$4.75/sq ft

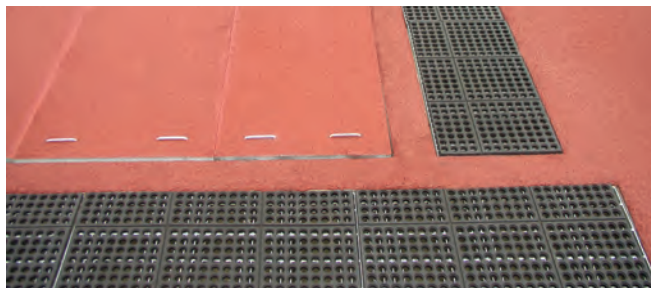


**ADDITIONAL COVER COLORS AVAILABLE!**  
Additional charge applies. See page 3 for color options. (Gray is standard.)

**LJ/TJ SAND PIT COVERS**

- Keep your sand pit clean and dry with solid vinyl sand pit covers or choose mesh if rain is not an issue
- Constructed of vinyl coated woven polyester
- Anchoring system: Bags filled with sand placed in pouches to weigh cover down
- Optional 5' x 5' multi-color graphic available
- Graphic worksheet and vector artwork must be provided

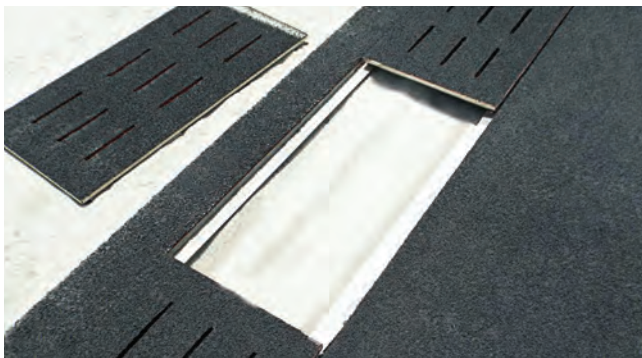
730147	Mesh 11' 9" x 25' 6"	\$1150
730147L	Mesh 11' 9" x 31' 6"	\$1345
730147V	Vinyl 11' 9" x 25' 6"	\$1160
730147VL	Vinyl 11' 9" x 31' 6"	\$1505
9453	Graphic Option	\$788



**TRADITIONAL GRATE & MAT SAND CATCHER COVER SYSTEM**

- Combination of 1" x 1/8" galvanized steel bar grating and perforated rubber overlay
- Creates strong combination for stamping off sand yet light enough for easy handling
- Standard unit measures 18" x 36" x 1 5/8" and requires a ledge around perimeter to rest on
- For perfect fit, installer may make one or more field cuts
- Sold per 18" x 36" sections only

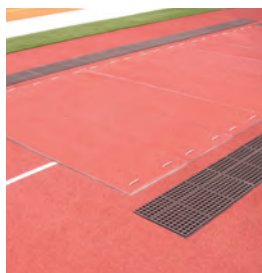
730149     \$193/section



**RECESSED SAND CATCHER COVER SYSTEM**

- Recessed cover design for 1/2" (12mm) track surface
- Constructed of 1/8" aluminum sheet metal
- Standard unit measures 18" x 36" and requires a ledge around perimeter to rest on
- Special lengths available between 18" and 35" long

73015036     \$171/section



**LJ/TJ ALUMINUM SAND PIT COVER**

- Each panel made from 9.5" x 1.75" x .125" aluminum planking framed with 2 3/8" x 1 1/2" x 3/16" aluminum angle
- Panels have four flush mount handles
- Recessed design for 1/2" (12mm) track surface

730148     \$41/sq ft



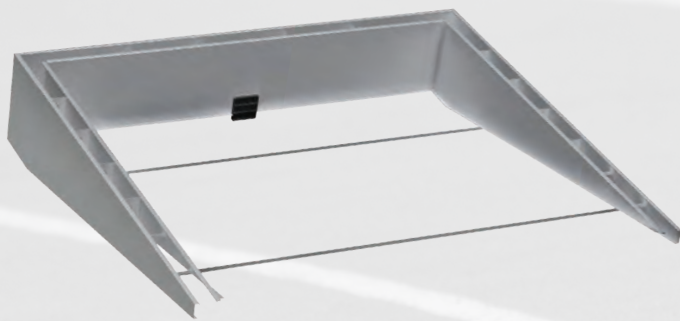
**PERIMETER PADDING SYSTEM**

- Greatly reduce possibility of injury caused by impact with sand pit edging
- Modular pads install on any sand pit quickly and conveniently
- Critical location of pads is along sides of sand pit
- Each pad is 36" long

730     \$93



## STEEPLECHASE



### SAVE MONEY WITH VALUEPACKS!

#### VALUEPACK - SURFACE MOUNT

Package includes:

- F500 Steeplechase Water Jump Form
- 740144 Steeplechase Water Jump Barrier-surface mount version

**VPF500      \$8950**

#### FUNCTIONAL-FORM STEEPLECHASE WATER JUMP SYSTEMS

Gill Athletics has greatly simplified the installation of steeplechase water jump reservoirs with these Functional-Form systems. With the Functional-Form, installation precision is ensured to meet NFHS, NCAA and World Athletics specifications. Structure is fabricated of specially folded  $\frac{1}{8}$ " aluminum to maximize strength and includes designed inner wall supports that allow the concrete to flow through and set evenly.

- F500: Compatible with 740144 water jump barrier
- F510: Compatible with 740134 water jump barrier
- Both models compatible with 730146 aluminum water jump cover
- Both models come standard with valve option: installed front wall valve to be connected with an outgoing pipe to the drain source
- *Meets NFHS, NCAA and World Athletics specifications*

**F500      Surface Mount Form      \$6270**

**F510      Ground Sleeve Form      \$6270**

#### VALUEPACK - GROUND SLEEVE

Package includes:

- F510 Steeplechase Water Jump Form with integrated ground sleeves
- 740134 Steeplechase Water Jump Barrier-ground sleeve version

**VPF510      \$8550**

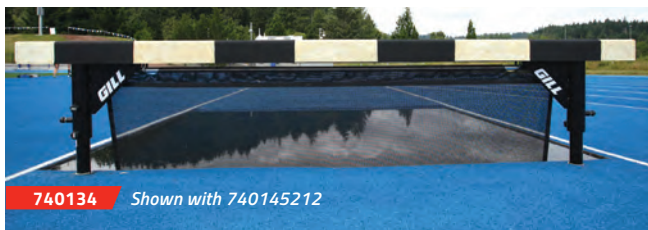


**730146**

#### WATER JUMP COVERS

- Each panel made from 9.5" x 1.75" x .125" aluminum planking framed with heavy duty aluminum angle
- Panels have four flush mount handles
- Recessed design for  $\frac{1}{2}$ " (12mm) track surface
- Understructure supported with 4" x 2" aluminum beams

**730146      \$9350**



**740134      Shown with 740145212**



#### STEEPLECHASE WATER JUMP BARRIERS

- Barrier beam is 4" x 4" square steel tubing with synthetic track material
- Pull pin design makes barrier height change a snap
- Welded gusset adds needed strength support to the beam
- Adjustable to three heights: 30", 33", 36"
- Aluminum water jump barrier seal available
- *Meets NFHS, NCAA and World Athletics specifications*
- *Surface mount barrier is World Athletics certified*
- *5 Year Limited Warranty*

**740134      Water Jump Barrier w/ Ground Sleeves      \$2540**

**740144      Water Jump Barrier w/ Surface Mount      \$2955**

**730145B      Aluminum Water Jump Barrier Seal      \$706**

#### MESH WATER JUMP BARRIER SEALS

- Add color and design to your steeplechase water jump
- Lightweight design will ease water barrier height change

**740145202      Royal Blue      \$348**

**740145203      Red      \$348**

**740145204      White      \$348**

**740145209      Gray      \$348**

**740145212      Black      \$348**

**740145204SP      White Mesh with Graphics      \$580**

#### COLORS





OFFICIAL EQUIPMENT SUPPLIER TO THE  
2021 TRACK & FIELD CHAMPIONSHIPS



### STEEPLECHASE BARRIER WITH DROP DOWN WHEELS

- 5" x 5" Barrier beam is constructed with aluminum extrusion and synthetic track material
- Wheels easily set and retract with foot engaged levers
- Pin pull design allows for simple barrier height adjustment
- Welded gusset adds needed strength support to the beam
- Adjustable to three heights: 30", 33", 36"
- Meets NFHS, NCAA and World Athletics specifications, World Athletics certified
- 5 Year Limited Warranty

740150	1 x 5m Barriers, 3 x 4m (4)		\$13645/set
740150131	4m Barrier; 13' Width		\$3440/ea
740150161	5m Barrier; 16' 5" Width		\$3745/ea



### STEEPLECHASE BARRIER

- 5" x 5" Barrier beam is constructed with aluminum extrusion and synthetic track material
- Pin pull design allows for simple barrier height adjustment
- Welded gusset adds needed strength support to the beam
- Adjustable to three heights: 30", 33", 36"
- Optional wheel kit for manual addition of wheels for transportation
- Meets NFHS, NCAA and World Athletics specifications, World Athletics certified
- 5 Year Limited Warranty



On all Steeplechase Barriers  
Call for Details.



740140	1 x 5m Barriers, 3 x 4m (4)		\$9720/set
740140131	4m Barrier; 13' Width		\$2425/ea
740140161	5m Barrier; 16' 5" Width		\$2745/ea
74014050	Wheels (4)		\$243/set



### 6' TRAINING BARRIER

740140061	6' Training Steeplechase Barrier		\$1940
740150061	6' Training Barrier w/Drop Down Wheels		\$ 3220

## VAULT BOXES

### ALUMINUM VAULT BOX

- Welded aluminum construction
- Reinforced backstop for prolonged life
- *Meets NFHS, NCAA and World Athletics specifications, World Athletics certified*

502  \$557

### ALUMINUM VAULT BOX LID

- Compatible with all Gill vault boxes
- Reinforced with two 1/2" angled vertical supports to prevent sagging
- 50201: Recessed design to accommodate 1/2" (12mm) track surface
- 50202: Flush design with no added track surface

50201 *Lid-Recessed Mount* \$489  
 50202 *Lid-Flush Mount* \$524



### STEEL VAULT BOX

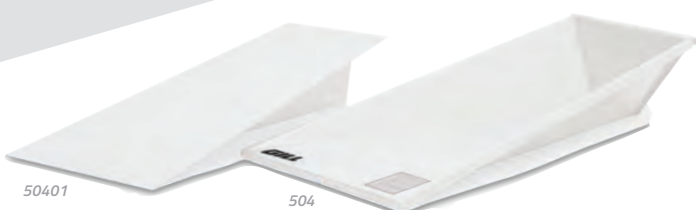
- Twelve gauge steel with fold and weld construction
- Flanged edges and flared sides for secure installation
- Finished with durable white powder coat
- *Meets NFHS, NCAA and World Athletics specifications, World Athletics certified*

500  \$410

### UNIVERSAL VAULT BOX LID

- Compatible with all Gill vault boxes
- Constructed of 11 gauge hot rolled steel
- Features anti-slip designed surface
- Finished with durable white powder coat

503 \$352



### STAINLESS STEEL VAULT BOX AND LID

- Box: Stainless steel alloy fold and weld construction for corrosion resistance
- Lid: 12 gauge 304 stainless steel plate with 2 angled vertical supports to prevent sag
- Lid: Recessed design to accommodate 1/2" (12mm) track surface
- Lid intended for use with stainless steel vault box
- *Meets NFHS and NCAA specifications*

504 *Vault Box* \$830  
 50401 *Vault Box Lid* \$601

### CAST ALUMINUM VAULT BOX

- 100% cast aluminum construction with a wall thickness of 3/8"
- Standard durable white powder coat finish; Orange powder coat option available
- Inside corners rounded for unhindered pole rotation
- Guaranteed against cracking or warping
- *Meets NFHS, NCAA and World Athletics specifications, World Athletics certified*

505 *White*  \$909  
 505C05 *Orange*  \$988





# SHOT RETURN & STOPS



\*Shown with 872 Base Set, 871 Add-on Kits (3), and Custom Banner

## SHOT PUT RETURN

- Spring loaded Shock-Stop™ absorbs the impact of the returning shot and protects the implement
- Powder coated steel legs adjust in height to control the shot return speed
- Pin pull design allows for simple barrier height adjustment
- Bases include stabilizing rubber feet (indoor surfaces) and spikes (outdoor surfaces)
- Base Set 872 includes 2 bases and 10' of rail
- Each Add-On Kit adds 10' of rail to customize the length to meet the facility needs

872	Shot Put Return Base Set	\$806
871	Shot Put Return 10' Add-on Kit	\$433/ea
87103CXXSP	Optional Custom Banner	\$553

## CUSTOMIZABLE



## SOFT SHOT STOP

- Prevents implements from rolling past the throw sector
- Shock absorbing foam filled barriers wrapped in a 19oz customizable vinyl
- Non-slip material on bottom creates traction to keep barriers in place
- Hook and loop straps secures each barrier to each other and keeps barriers functioning as one unit
- Each barrier is 6' L x 23" W x 23" H

869CXX	Soft Shot Stop	\$668
869CXXSP	Soft Shot Stop W/ Graphics	\$752



## HEAVY DUTY IMPLEMENT BARRIER

- Prevents implements from rolling past the throw sector
- Constructed with durable polyethylene
- Each barrier locks together with steel pin to eliminate gaps
- Each section is 6' L x 18" W x 32" H
- 80 lbs empty / 1,110 lbs if filled with water

868 \$688

SECTOR LENGTH	# OF UNITS
16m / 52'	6
18m / 59'	7
20m / 66'	8
22m / 72'	8
24m / 79'	9

\*Applies to both 868 and 869 Models

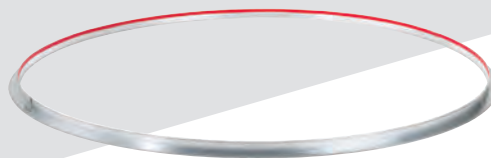
## CIRCLES & TOEBOARDS



### ALUMINUM CIRCLES

- Four sections of 1" x 3/4" extruded aluminum angle
- Designed to be cast into concrete
- Discus circle can also be mounted to surface
- Compatible with toeboards 358, 363
- *Meets NFHS, NCAA and World Athletics specifications*

369	Shot/Hammer Circle	\$243
370	Discus Circle	\$255



### ALUMINUM CIRCLES WITH 2" ANGLE PROFILE

- Two sections of 2" x 2" extruded aluminum angle
- Designed to be cast into concrete
- Compatible with toeboards 358, 363
- *Meets NFHS, NCAA and World Athletics specifications*

374	Shot/Hammer Circle	\$535
375	Discus Circle	\$557



PROFILE FOR  
369, 370 & 372



PROFILE FOR  
371 & 373



PROFILE FOR  
374 & 375



364 with 373



### ALUMINUM SHOT CIRCLE

- Three sections of 1" x 3/4" extruded aluminum angle
- Designed to be mounted on top of concrete surface
- Anchor bolts included
- Compatible with toeboards 359, 364
- *Meets NFHS specifications*

372	\$232
-----	-------



### POWDER COATED STEEL DISCUS CIRCLE

- Three sections of 1/4" x 1 1/2" flat powder coated steel
- Designed to be mounted on top of concrete surface
- Anchor bolts included
- *Meets NFHS specifications*

371	\$302
-----	-------



### POWDER COATED STEEL SHOT CIRCLE


- Four sections of 1/4" x 1 1/2" flat powder coated steel
- Designed to be mounted on top of concrete surface
- Anchor bolts included
- Compatible with toeboards 359, 364
- *Meets NFHS specifications*

373	\$268
-----	-------



### HAMMER CONVERSION CIRCLE





- Converts a discus ring into a hammer ring
- 7 interlocking sections of white PVC plastic
- *Meets NFHS, NCAA and World Athletics specifications, World Athletics certified*

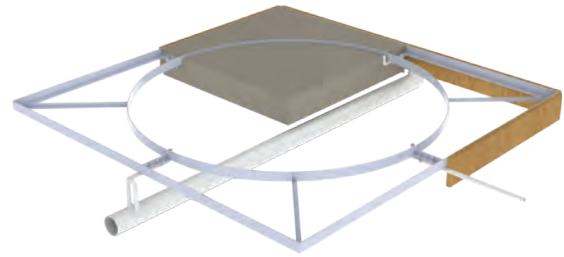
3622	4 Piece System 	\$460
------	--	-------



**ALUMINUM CIRCLES WITH CROSS BRACING**

- Two sections of 1/4" x 3" extruded aluminum with welded bracing
- Bolt together to maintain form during in-ground installation
- Hardware included
- Compatible with toeboards 358, 363
- Meets NFHS, NCAA and World Athletics specifications, World Athletics certified

366	Shot/Hammer Circle		\$701
366C04	Shot/Hammer Circle; white		\$789
367	Discus Circle		\$699
367C04	Discus Circle; white		\$784



**ALUMINUM CIRCLE FORMS**

- Four sections of 2" x 3" aluminum angle
- Bolt together form for in-ground installation
- Aluminum exterior bracing creates a strong frame
- Center open for smooth concrete pour and crack-resistant finish
- Inner circle is 1/4" x 3" flat aluminum bar
- Compatible with toeboards 358, 363
- Meets NFHS, NCAA and World Athletics specifications

3741	Shot/Hammer Circle Form	\$2715
3751	Discus Circle Form	\$3100



**SYNTHETIC SHOT TOEBOARD FOR DEPRESSED PAD**

- Molded low density polyethylene designed for 3/8" depressed surface
- Compatible with circles 366, 369, 374, 3741
- Meets NFHS, NCAA and World Athletics specifications

358 \$364

**SYNTHETIC SHOT TOEBOARD FOR LEVEL PAD**

- Molded low density polyethylene designed for surface mount shot circles
- Compatible with circles 372, 373
- Meets NFHS specifications

359 \$364



**ALUMINUM SHOT TOEBOARD FOR DEPRESSED PAD**

- Cast aluminum designed for a 3/8" depressed surface
- Compatible with circles 366, 369, 374, 3741
- Meets NFHS, NCAA and World Athletics specifications, World Athletics certified

363 \$568

**ALUMINUM SHOT TOEBOARD FOR LEVEL PAD**

- Cast aluminum designed for surface mount shot circles
- Compatible with circles 372, 373
- Meets NFHS specifications

364 \$568



**SYNTHETIC PLUGS**

- Keeps debris and standing water out of throwing circles
- Constructed of 3/8" thick rubber and made to fit snug inside depressed circles
- Plugs come in sections for easier handling

37001	Shot Circle Plug	\$343
37002	Discus Circle Plug	\$540



**INDOOR SHOT/WEIGHT THROW CIRCLE**

- Constructed of 3/8" plywood with steel hinges and handles
- Foldaway handles for easy handling and storage
- Laminated weather proofed marine plywood toeboard (sold separately)
- Optional three piece 3/8" 7-ply birch plywood throwing surface (sold separately, not shown)
- Meets NFHS, NCAA and World Athletics specifications

368	Indoor Shot/Weight Throw Circle	\$1130
3680	Wood Shot Toeboard for Indoor Circle	\$533
3681	Shot Throwing Surface	\$429



NEVER  
GIVEN  
ALWAYS  
EARNED





**CAGES**



## HAMMER CAGES



**SAFETY.**  
**CONVENIENCE.**  
**LONGEVITY.**



**Gill hammer cages** have exclusive features that protect athletes, officials, and spectators from errant throws in the hammer event. Combined with an industry best five-year warranty, Gill Athletics keeps your facility at the top of its class in safety and efficiency. Your facility deserves the best.

### FRONT DOOR CABLE DESIGN

With Gill's exclusive tensioning cable front door design your cage will increase athlete safety and efficiency in the event. No more bent front pole from errant throws, and decrease the likelihood of bounce backs from implements.

### DOOR HINGE LOCK BOLT

Suggested from the top track designer in America, this unique feature keeps your front doors from tweaking and misaligning from the door hatch location.

### BLOCK & TACKLE PULLEYS

Block and tackle pulley system to safely remove 'stuck' implements from the nets without climbing.

### REAR DOOR ACCESS

Netting System that keeps your athletes away from the throwing sector of the front cage while increasing the speed of repetitions.



## CUSTOMIZABLE CAGES

### Pole Color (XX)



### Accent Color (YY)



\*To specify your color selection, use the two-digit number to replace XX & YY in the item number.

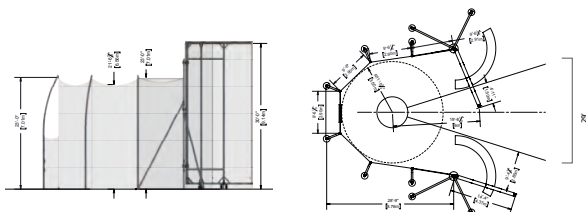




### MAXIMUS™ HAMMER CAGE

▪ 5 Year Warranty

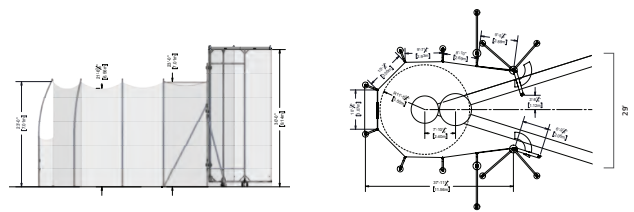
<b>742130</b>	Cage	<b>\$38305</b>
<b>742130CXXYY</b>	Cage with Custom Color	<b>\$42140</b>
<b>74213001</b>	Ground Sleeve Kit	<b>\$2080</b>
<b>732103</b>	Optional Barrier Net (8')	<b>\$927</b>



### MAXIMUS™ DOUBLE RING HAMMER CAGE

▪ 5 Year Warranty

<b>742135</b>	Cage	<b>\$40555</b>
<b>742135CXXYY</b>	Cage with Custom Color	<b>\$44615</b>
<b>74213501</b>	Ground Sleeve Kit	<b>\$2600</b>
<b>732108</b>	Optional Barrier Net (8')	<b>\$1020</b>



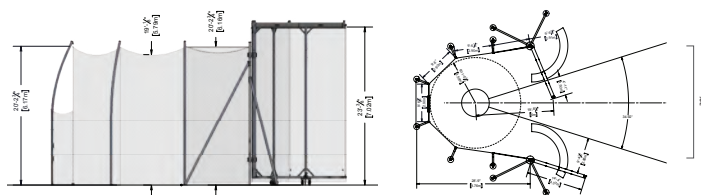


## HAMMER CAGES

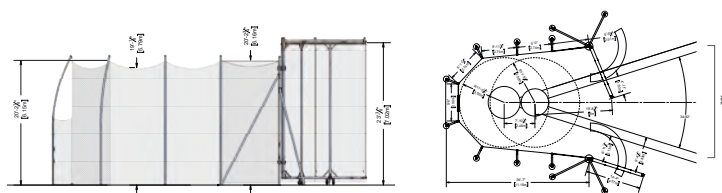


### NCAA HAMMER/DISCUS CAGES

- Available in single ring or double ring design
- Poles: 6063-T6 aluminum net poles
- Doors: Cages have 7m tall aluminum doors with galvanized steel door hinge poles. Tall Cages have 8m tall doors.
- Net: Weather treated nylon 6 net with 749 lb break strength
- Cage - Main net: 20' 6"/6.25m, Door net: 23'/7m
- Tall Cage - Main net: 23'/7m, Door net: 26' 3"/8m
- Tall cage includes required cage door bracing
- Ground sleeve kit sold separately
- **Meets NCAA specifications**
- **5 Year Warranty**



SINGLE RING CAGES



DOUBLE RING CAGES

#### SINGLE RING CAGE

<b>742110</b>	Cage	<b>\$30130</b>
<b>742110CXXYY</b>	Cage with Custom Color	<b>\$33145</b>
<b>74211001</b>	Ground Sleeve Kit	<b>\$2010</b>
<b>732103</b>	Optional Barrier Net (8')	<b>\$927</b>

#### TALL SINGLE RING CAGE

<b>742120</b>	Tall Cage	<b>\$33605</b>
<b>742120CXXYY</b>	Tall Cage with Custom Color	<b>\$36970</b>
<b>74212001</b>	Ground Sleeve Kit	<b>\$2055</b>
<b>732103</b>	Optional Barrier Net (8')	<b>\$927</b>

#### DOUBLE RING CAGE

<b>742115</b>	Cage	<b>\$32565</b>
<b>742115CXXYY</b>	Cage with Custom Color	<b>\$35825</b>
<b>74211501</b>	Ground Sleeve Kit	<b>\$2470</b>
<b>732108</b>	Optional Barrier Net (8')	<b>\$1020</b>

#### TALL DOUBLE RING CAGE

<b>742125</b>	Tall Cage	<b>\$35810</b>
<b>742125CXXYY</b>	Tall Cage with Custom Color	<b>\$39390</b>
<b>74212501</b>	Ground Sleeve Kit	<b>\$2575</b>
<b>732108</b>	Optional Barrier Net (8')	<b>\$1020</b>



### CUSTOMIZABLE SYSTEMS

See color charts on page 2 to replace the XX and YY in the item numbers.



732310CXX



On all Gill Cages  
Call for Details.

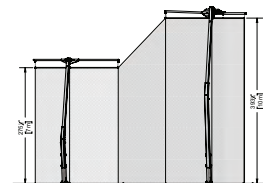
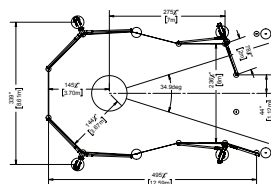
**COLORS**



\*To specify color with order, use the two-digit number of your color selection to replace XX in the item number.

**THOR 10 HAMMER/DISCUS CAGE**

- Poles: (4) Combination of steel and aluminum to withstand up to 74mph winds
- Doors: (2) 10m x 2m swing arm doors
- Net: 1 3/4" square mesh woven poly cord with 771 lb break strength
- Main net height: 23'7m, Door net height: 32'10"/10m
- Net is secured by net rails across entire cage and 14 rope anchors
- 59" deep ground sleeves
- Meets NCAA and World Athletics specifications
- 5 Year Warranty

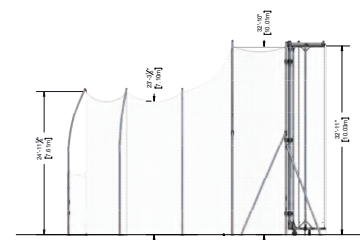
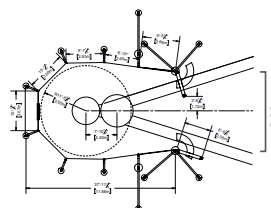


732310CXX Thor 10 Hammer/Discus Cage \$42970

73231001 Ground Sleeve and Net Anchor Kit \$2350

**INTERNATIONAL DISCUS/HAMMER CAGE**

- Poles: (8) 6063-T6 aluminum net poles
- Doors: (2) Galvanized steel door hinge poles and 10m tall aluminum moveable doors
- Net: Weather treated nylon 6 net with 340.7kg break strength
- Ground sleeve kit sold separately
- Meets NCAA specifications.
- 5 Year Warranty



742145 Cage \$39400

74214501 Ground Sleeve Kit \$2785

732218 Optional Barrier Net (8') \$1950



## DISCUS CAGES



### APOLLO DISCUS CAGE

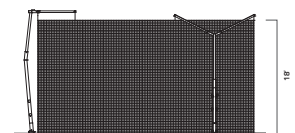
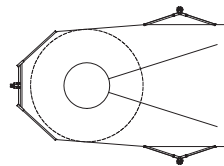
- Poles: (3) Combination of steel and aluminum to withstand up to 62mph winds
- Net: 1 3/4" square mesh woven poly cord with 352 lb break strength
- Net height: 18'
- Net is secured by 14 hanging points and 8 rope anchors
- 36" deep ground sleeves
- *Meets NCAA and World Athletics Specifications*
- **5 Year Warranty**

<b>732301CXX</b>	<i>Apollo Discus Cage</i>	<b>\$16765</b>
<b>732301009</b>	<i>Ground Sleeve and Net Anchor Kit</i>	<b>\$861</b>

### COLORS

<b>22</b>	<b>23</b>	<b>25</b>
ARCH GRAY	ARCH BLACK	ARCH WHITE

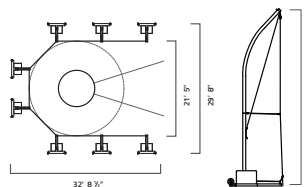
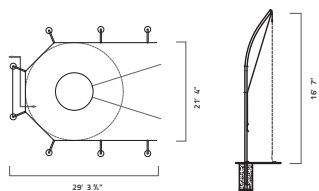
*\*To specify color with order, use the two-digit number of your color selection to replace XX in the item number.*



*On all Gill Cages  
Call for Details.*



**732130**  
OPTIONAL BARRIER NET SHOWN



### NCAA ALUMINUM DISCUS CAGE

- Poles: (8) 6063-T6 aluminum net poles
- 16' 7" Net: Weather treated nylon 6 net with 340 lb break strength
- Rear door access net standard
- Rear net support tubes prevent net sag
- 18" hinged net arms secure net at all eight poles
- 36" deep ground sleeves
- **Meets NCAA specifications**
- **5 Year Warranty**

<b>732130</b>	Cage	<b>\$5560</b>
<b>732130CXX</b>	Cage with Custom Color	<b>\$7170</b>
<b>732132</b>	Optional Barrier Net (8')	<b>\$1340</b>

### NCAA PORTABLE DISCUS CAGE

- Designed for set up and removal as needed
- Poles: (8) 2 1/2" outside diameter 6063-T6 aluminum net poles
- 16' 7" Net: Weather treated nylon 6 net with 340 lb break strength
- Bases: A500 Grade B steel with wheels for transportability and weighted with 5 gallon jugs to be filled with sand or water
- **Meets NCAA specifications**
- **5 Year Warranty**

<b>732230</b>	Cage	<b>\$12400</b>
<b>732230CXXYY</b>	Cage with Custom Color	<b>\$13635</b>

Pole Color (XX)    Accent Color (YY)    See color chart on pg 105

### BRUTUS DISCUS CAGE

- For high wind areas that need extra strength discus cages
- Made of Hammer Cage strength 4" outside diameter aluminum poles
- **Meets NFHS specifications**
- **5 Year Warranty**

<b>732150</b>	Brutus Cage	<b>\$8685</b>
<b>732150CXX</b>	Brutus Cage, Custom Color	<b>\$10440</b>



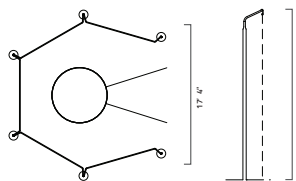
## DISCUS CAGES



### PRO-DOWN DISCUS CAGE

- Poles: (6) 2 3/8" outside diameter 12 gauge steel poles
- 10' 6" Net: Knotless weather treated nylon net with 180 lb break strength
- Five galvanized steel top rungs eliminate net sag
- **Meets NFHS specifications**
- **5 Year Warranty**

<b>80401</b>	<i>Cage with Ground Sleeves</i>	<b>\$1735</b>
<b>80402</b>	<i>Cage with Plates</i>	<b>\$2755</b>



### DISCUS SECTOR NET

- Effective at stopping a discus from skipping outside of the sector
- 2' tall by 60' long 320 lb break strength discus net
- Held by 3/4" diameter steel net poles and ground stakes
- Polyethylene net spools included for convenient storage and handling

**731135      \$602**



### OUTDOOR THROWING NET

- Get the maximum number of reps with the minimal amount of retrieval
- Provides the perfect set up for working on throwing technique for shot put, discus and javelin (weighted balls)
- Bottom of main net has a pocket to catch implements before they hit the ground, preventing damage and making retrieval easier
- Side nets offer additional errant throw protection
- Poles: 4" diameter, 1/8" wall, T6 aluminum tube in 40" deep ground sleeves
- Nets are 749 lb test weather treated knotted nylon
- Main net is 20' x 20'

**731300      \$3025**

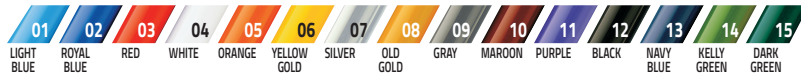




**COLOR OPTIONS AVAILABLE!**

*Transform Your Cages with Custom Powder Coat*

**CUSTOMIZABLE**



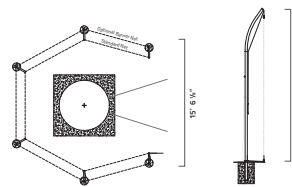
\*To specify color with order, use the two-digit number of your color selection to replace XX in the item number.

\*Gray and Black powder coat available in Gloss or Flat

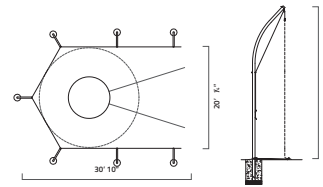
**HIGH SCHOOL DISCUS CAGES**

- Aluminum poles: 2 7/8" outside diameter 6063-T6 (Ultimate-30ksi, Yield-25ksi) with rolled offset for safety
- Steel poles: 2 1/2" square A513 (Ultimate-42ksi, Yield-30ksi) with rolled offset for safety
- Nets: 180 lb break strength
- Net height: 13' 6"
- *Meets NFHS specifications*
- *5 Year Warranty*

**6 POLE DESIGN**



**7 POLE DESIGN**



**ALUMINUM CAGE**

<b>8010</b>	6-Pole Cage	<b>\$3165</b>
<b>8010CXX</b>	6-Pole Cage, Custom Color	<b>\$3925</b>
<b>80102</b>	Barrier Net	<b>\$452</b>
<b>8020</b>	7-Pole Cage	<b>\$3525</b>
<b>8020CXX</b>	7-Pole Cage, Custom Color	<b>\$4370</b>
<b>80202A</b>	Barrier Net	<b>\$603</b>
<b>8021</b>	7-Pole Cage w/ Rear Door Access	<b>\$4585</b>
<b>8021CXX</b>	7-Pole Cage w/ Rear Door Access, Custom Color	<b>\$5345</b>
<b>80212</b>	Barrier Net w/ Rear Door Access	<b>\$580</b>

**STEEL CAGE**

<b>8030</b>	6-Pole Cage	<b>\$2865</b>
<b>80302</b>	Barrier Net	<b>\$486</b>

**BRUTUS CAGE**

- For high wind areas that need extra strength discus cages
- Made of Hammer Cage strength 4" outside diameter aluminum poles
- *Meets NFHS specifications*
- *5 Year Warranty*

<b>9010</b>	6 Pole High School Cage	<b>\$4695</b>
<b>9010CXX</b>	6 Pole High School Cage with Custom Color	<b>\$5595</b>
<b>9020</b>	7 Pole High School Cage	<b>\$5460</b>
<b>9020CXX</b>	7 Pole High School Cage with Custom Color	<b>\$6220</b>
<b>9021</b>	7 Pole High School Cage, Rear Door Access	<b>\$5785</b>
<b>9021CXX</b>	7 Pole High School Cage, Rear Door Access, Custom Color	<b>\$6550</b>

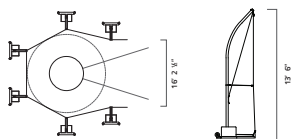
## DISCUS, SHOT, & INDOOR CAGES



### HIGH SCHOOL PORTABLE DISCUS CAGE

- Designed for set up and removal as needed
- Poles: (6) 6063-T6 aluminum net poles
- 13' 6" Net: #504 knotless nylon netting with 180 lb break strength
- Bases: A500 Grade B steel with wheels for transportability and weighted with 5 gallon jugs to be filled with sand or water
- Jug cover customization available for additional charge
- **5 Year Warranty**

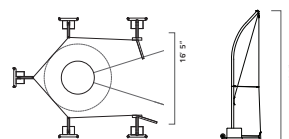
732220	Cage	\$8725
732220CXXYY	Cage with Custom Color	\$9795



### NCAA PORTABLE INDOOR CAGE

- Designed for set up and removal as needed
- Poles: (5) 6063-T6 aluminum net poles
- 13' 2" Net: #42A knotless nylon netting with 561 lb break strength
- Doors: repositionable with wired front design for longer life
- Bases: A500 Grade B steel with wheels for transportability and weighted with 5 gallon jugs to be filled with sand or water
- Jug cover customization available for additional charge
- **Meets NCAA specifications**
- **5 Year Warranty**

732250	Cage	\$13370
732250CXXYY	Cage with Custom Color	\$14800



### CUSTOMIZABLE

\*To specify color with order, use the two-digit number of your color selection to replace XX in the item number.

Pole Color (XX)

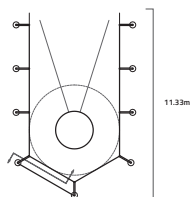


Accent Color (YY)



### WORLD ATHLETICS ALUMINUM DISCUS CAGE

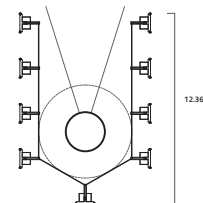
- Poles: (9) 6063-T6 aluminum net poles
- 6m Net: Weather treated nylon 6 net with 340 lb break strength
- Rear door access net standard
- Rear net support tubes prevent net sag
- 18" hinged net arms secure net at all poles
- **Meets NCAA and World Athletics Specifications**
- **5 Year Warranty**



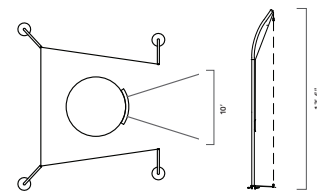
732145	Cage	\$10725
--------	------	---------

### INTERNATIONAL PORTABLE DISCUS CAGE

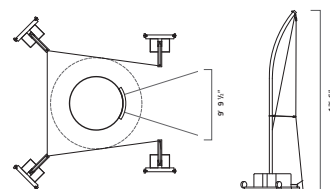
- Designed for set up and removal as needed
- Poles: (9) 6063-T6 aluminum net poles
- 5.1m Net: Weather treated #42A knotless net with 340 lb break strength
- Bases: A500 Grade B steel with wheels for transportability and weighted with 5 gallon jugs to be filled with sand or water
- **5 Year Warranty**



732240	Cage	\$15520
732240CXXYY	Cage with Custom Color	\$16715



SHOT CAGE



PORTABLE SHOT CAGE

**SHOT CAGE**

- Poles: (4) 6063-T6 aluminum or A513 steel
- 13' 6" Net: Weather treated nylon 6 net with 180 lb break strength
- 18" hinged net arms secure net at front two poles with ground stakes used at back poles
- **5 Year Warranty**

<b>805</b>	Steel Cage	<b>\$2500</b>
<b>8050</b>	Aluminum Cage	<b>\$3025</b>
<b>8050CXX</b>	Aluminum Cage with Custom Color	<b>\$3410</b>

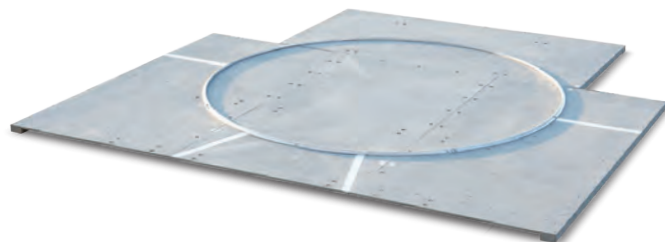
**PORTABLE SHOT CAGE**

- Designed for set up and removal as needed
- Poles: (4) 6063-T6 aluminum net poles
- 13' 6" Net: #42A knotless nylon netting with 180 lb break strength
- Bases: A500 Grade B steel with wheels for transportability and weighted with 5 gallon jugs to be filled with sand or water
- **5 Year Warranty**

<b>732260</b>	Cage	<b>\$6810</b>
<b>732260CXXYY</b>	Cage with Custom Color	<b>\$7525</b>



On all Gill Cages  
Call for Details.



**PORTABLE DISCUS PLATFORM**

- Wood platform with aluminum circle
- Constructed of 1/2" marine grade plywood with pressure treated 2' x 5' and 2' x 6' lumber
- Platform breaks down into eight pieces for storage space of 8' x 4'
- Weighs in excess of 400 lb
- Gray marine coat finish

**3710**      **\$4095**





# VERSACOM BOXES

## CONNECTING IT ALL TOGETHER

The *VersaCom Box* provides a junction for electricity and cable hookups. This box can be put in virtually any location around performance areas of varying surfaces. The open bottom of the *VersaCom Box* provides adequate drainage and conduit entry, while the hand holes in the cover allow easy access.

- Divider plates in full size version, provided to help keep electrical equipment segregated
- Main box structure is made of 1/4" thick folded aluminum
- Lid is constructed of 1/4" aluminum plates for maximum support and durability

The *VersaCom Box - Synthetic Version* allows material to be bonded or poured onto the top of the lid to match the surrounding surface.

The *VersaCom Box - Turf Version* features a supplied aluminum top to allow artificial turf to be glued on the jobsite, and is tethered to the box. This top is reinforced with multiple aluminum plates for maximum strength and durability. Factory installed turf infill retention brushes keep infill out of the box.



**SOLD SEPARATELY**

### VERSACOM RISER

The *VersaCom Riser* has the same dimensions as a full-size *VersaCom Box*. The riser attaches to the bottom creating a box that is twice as deep.

**F90010**    *Versacom Riser*    **\$602**

VERSACOM BOXES		FULL SIZE 30" L x 18" W x 14" D		HALF SIZE 15" L x 18" W x 14" D	
SYNTHETIC VERSIONS	<i>Synthetic</i>	<b>F910</b>	<b>\$1195</b>	<b>F930</b>	<b>\$776</b>
TURF VERSION	<i>Turf</i>	<b>F960</b>	<b>\$1230</b>	<b>F970</b>	<b>\$811</b>



OFFICIAL EQUIPMENT SUPPLIER TO THE  
2021 TRACK & FIELD CHAMPIONSHIPS

**PORTABLE TRACK SHELTER**

Steel frame is mounted on swivel casters. 360 degree seating surrounds a center storage shelf. Roof frame is constructed of aluminum bracing with architectural gray powder coat. Canopy is tensioned with a one-piece vinyl wrap. Custom color and graphic application available on canopy top.

54240CXXSP      Portable Track Shelter w/ Graphics      \$5410



**CUSTOMIZABLE**

Vinyl



\*Specify vinyl color with order, use the two-digit number of your color selection to replace XX in the item number.



**PORTABLE PRESS TOWER**

Multi-use tower can be used for coaching, filming, press and media. Non-skid decking. 5'-9" platform height. 4' x 10'-6" platform size with an overall size of 7' x 10'-6". Anodized aluminum bench with back moves forward and back. 16" pneumatic wheels- two locking and two swivel wheels. Optional soft enclosure for inclement weather.

- Weather Resistant Top Cover Available in Colors
- Heavy Duty Aluminum Construction
- 3 Year Warranty

542359XX	Press Tower	\$17205
542300XX	Removable Side Curtain	\$1645
54230000	Towing Kit	\$545



## BALLSTOPS

### 12' - 40' TALL BALLSTOP SYSTEMS

- 12', 15' and 20' use 4" diameter, 1/8" wall aluminum tube - #36 Netting
- 25' and 30' use 6" Sch 40 aluminum tube - #36 Netting
- 35' and 40' use 6" Sch 40 steel tube - #36 Netting
- All Poles 12'-40' have a vertical support cable for additional net support
- Ground sleeves included
- *All poles are now powder coated in architectural black - Other colors available*
- 5 Year Warranty

**CALL FOR PRICING**



On all Gill Ballstops  
Call for Details.



**CUSTOMIZABLE  
BALLSTOPS**



### 10' TALL BALLSTOP SYSTEMS

The 10' Tall Ballstop Systems were designed to be set up and removed as needed and are available as above ground or in ground installation.

- Net: #504 Weather treated 1 3/16" square mesh with 1/4" roped edge and 180 lb break strength
- Net is supported at the top and held in place at the bottom by 1/8" vinyl covered steel cable
- The 8062 is a portable system which uses a platform base with wheels that is weighted down by four 5 gallon jugs (included)
- The 807 is installed in aluminum ground sleeves (caps are included for use when poles are removed)
- *Purchase one starter unit and as many additional units as needed to reach your desired overall length (Sold in 20' lengths)*
- *All poles are now powder coated in architectural black - Other colors available for an additional cost*
- 5 Year Warranty

<b>8062</b>	Portable Starter Unit (10' x 20')	<b>\$1950</b>
<b>8062A</b>	Portable Additional Unit (10' x 20')	<b>\$1140</b>
<b>807</b>	Sleeved Starter Unit (10' x 20')	<b>\$667</b>
<b>807A</b>	Sleeved Additional Unit (10' x 20')	<b>\$461</b>



# PACER<sup>®</sup>

**FROM NOVICE TO  
ELITE, WE HAVE  
YOU COVERED.**

*Get the right pole for your vaulters.*

 **1** YEAR  
WARRANTY

ON EVERY PACER POLE

**QUICK  
SHIP** 

AVAILABLE FOR ALL FIBERGLASS POLES

OFFICIAL  
PARTNER



OFFICIAL TRACK & FIELD  
EQUIPMENT SUPPLIER

**ONE** **FXV** **COMPOSITE**



601 Mercury Drive  
Champaign, IL 61822  
USA

OFFICIAL  
PARTNER



OFFICIAL TRACK & FIELD  
EQUIPMENT SUPPLIER

PRESORTED STD  
U.S. Postage  
**PAID**  
LITANIA SPORTS  
GROUP

# **FREEDOM TO FOCUS ON YOUR ATHLETES**



**2021 TRACK+FIELD CATALOG**

**GILLATHLETICS.COM**

601 MERCURY DRIVE | CHAMPAIGN, IL 61822

**800.637.3090**

SALES@GILLATHLETICS.COM

Prefer an E-Catalog instead? To unsubscribe from future mailings go to [www.litaniasports.com/unsubscribe](http://www.litaniasports.com/unsubscribe)