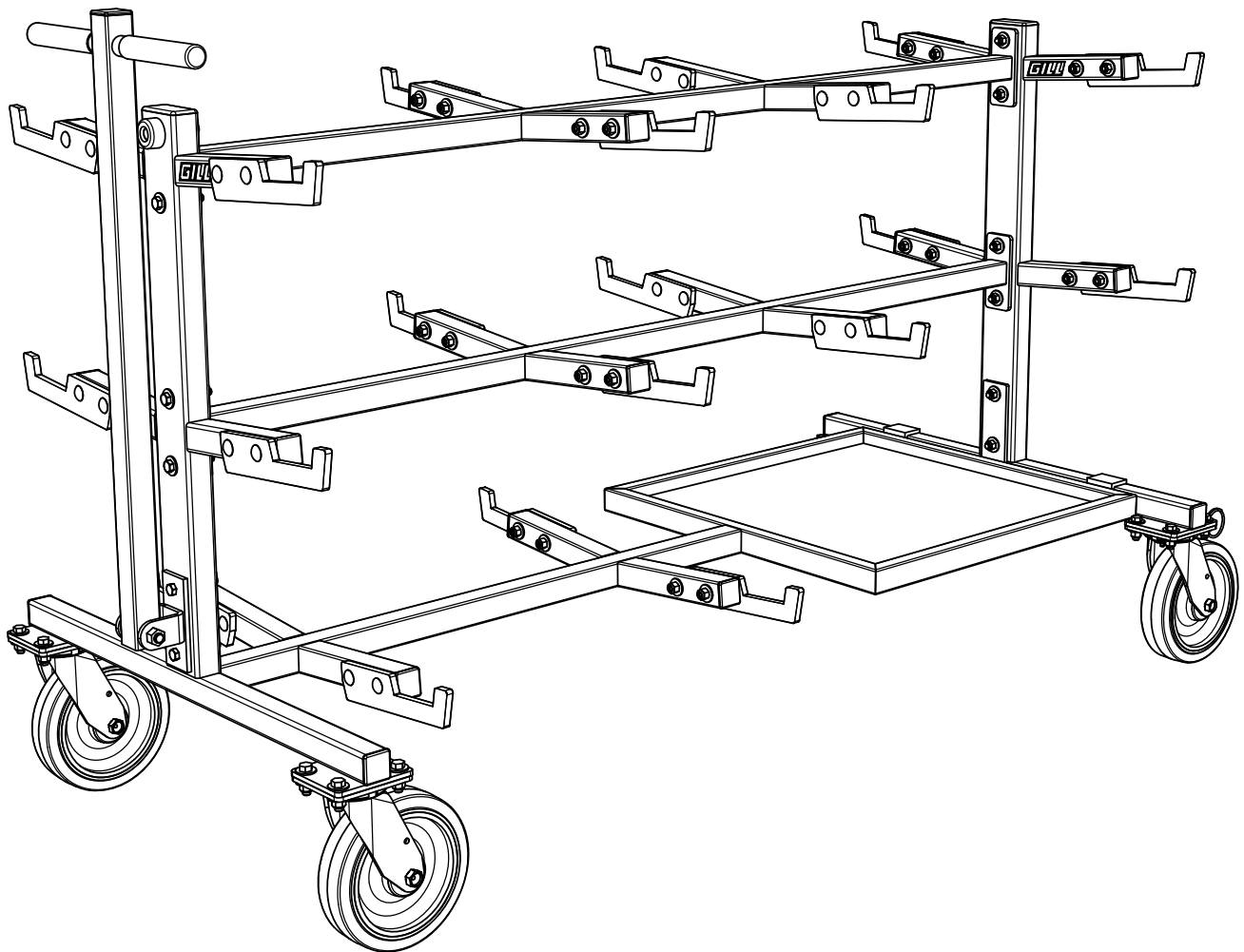




www.gillathletics.com
800-637-3090

733190 - International Starting Block Cart Instructions



Parts:

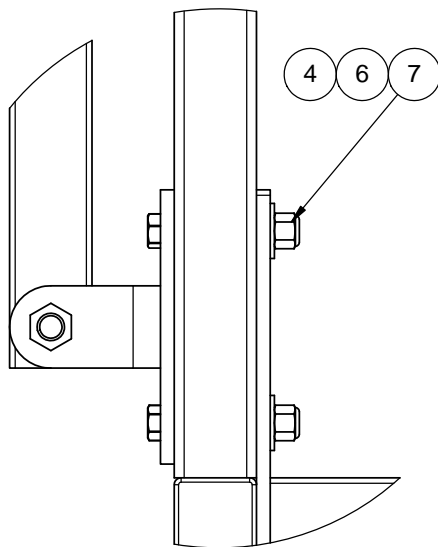
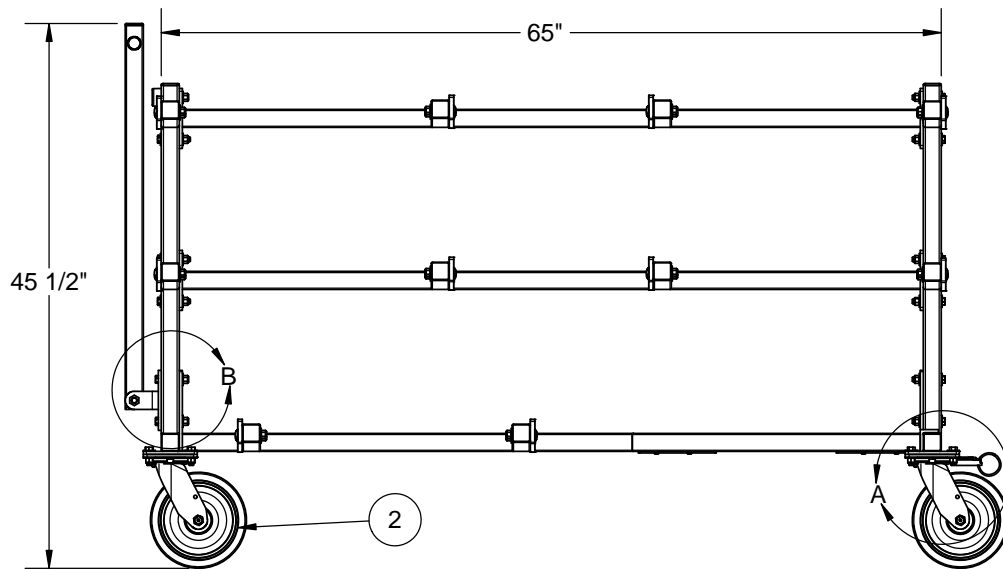
- 73319010 - End Frames
- 73319020 - Center Spreaders
- 73319030 - Bottom Spreader & Shelf
- 73319050 - Handle & Hinge Bracket

THIS WARNING IS GIVEN IN COMPLIANCE
WITH CALIFORNIA'S PROPOSITION 65:

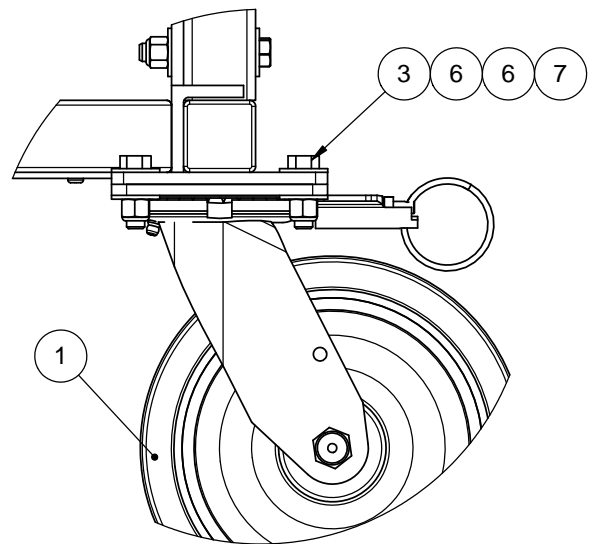
WARNING

This product contains chemicals known to the
State of California to cause cancer, birth defects
or other reproductive harm.

#	Part #	Description	Qty.
1	M757	Locking Swivel Caster	2
2	M759	Swivel Caster	2
3	HDWE011250E0	3/8-16 x 1.25" Hex Bolt	16
4	HDWE012080E0	3/8-16 X 2 1/2" GRADE 5 Hex Bolt	12
5	73319025	Starting Block Retaining Bracket	20
6	HDWE050040E0	3/8" Flatwasher	93
7	M1291	3/8"-16 Nylock Hex Nut	68
8	HDWE020570E0	3/8" X 2.25" Carriage Bolt Grade 5	40
9	FEET00038000	Rubber Bumper	1



DETAIL B



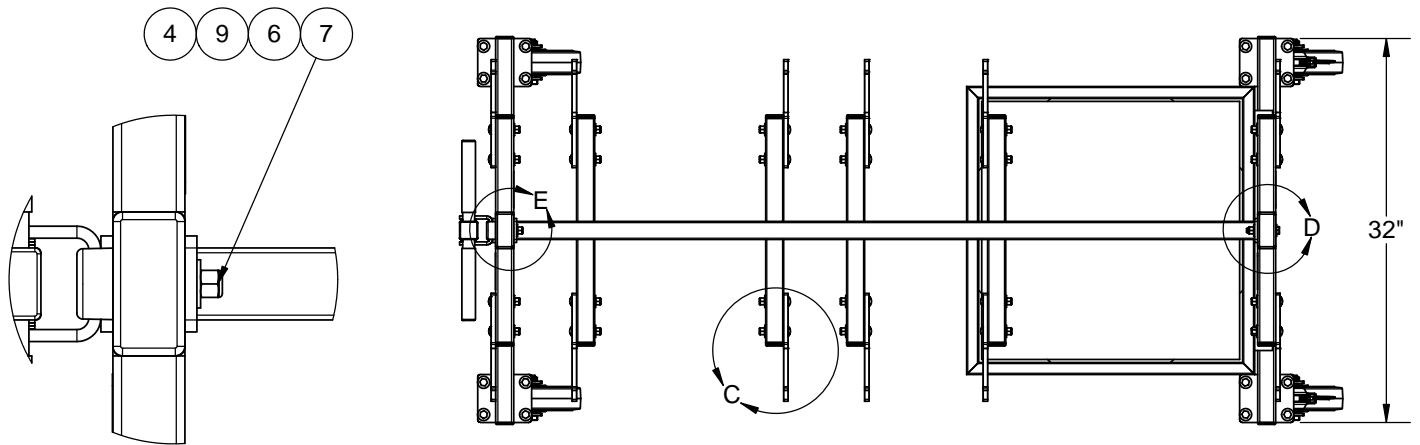
DETAIL A



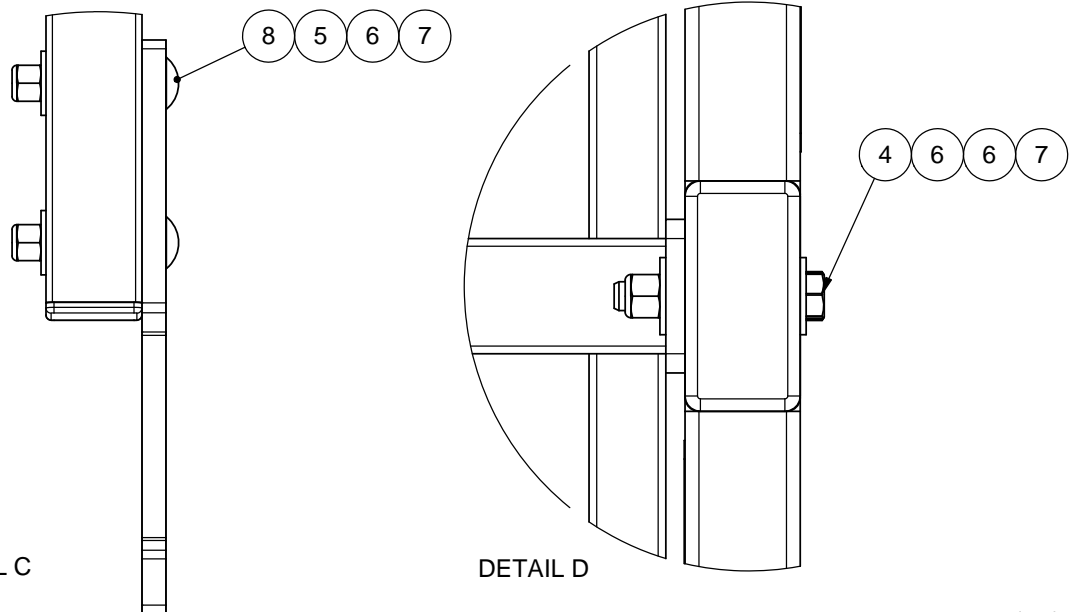
www.gillathletics.com
800-637-3090

733190 - International Starting Block Cart Instructions

#	Part #	Description	QTY.
1	M757	Locking Swivel Caster	2
2	M759	Swivel Caster	2
3	HDWE011250E0	3/8-16 x 1.25" Hex Bolt	16
4	HDWE012080E0	3/8-16 X 2 1/2" GRADE 5 Hex Bolt	12
5	73319025	Starting Block Retaining Bracket	20
6	HDWE050040E0	3/8" Flatwasher	93
7	M1291	3/8"-16 Nylock Hex Nut	68
8	HDWE020570E0	3/8" X 2.25" Carriage Bolt Grade 5	40
9	FEET00038000	Rubber Bumper	1



DETAIL E



DETAIL C

DETAIL D