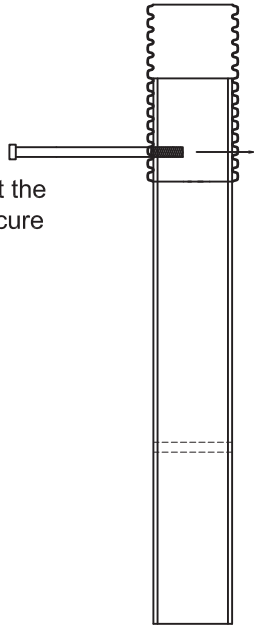
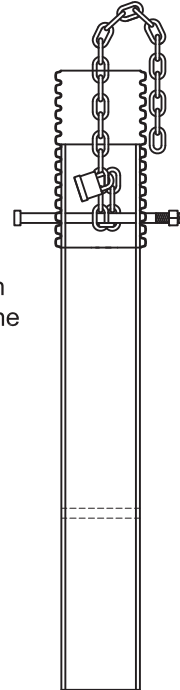


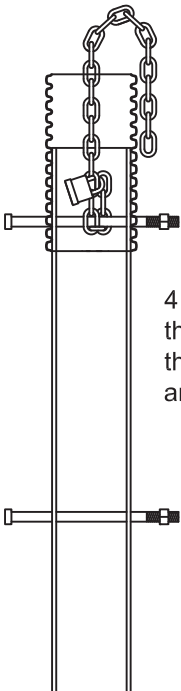
1. Create a small loop at the end of the chain and secure with a padlock.



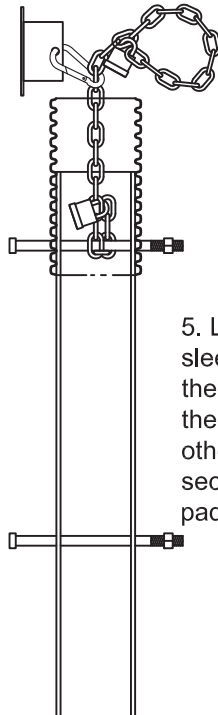
2. Slide the Corrugated tubing over the end of the sleeve with the hole closest to the end. Line up the holes and push a bolt through one side of the tubes.



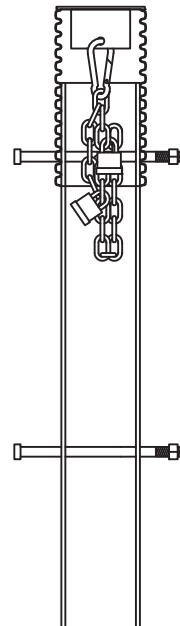
3. Slide the bolt through the loop on the end of the chain and through the holes in the other side of the tubes. Secure with a nut.



4. Put remaining bolt through second hole at the bottom of the sleeve and secure with a nut.



5. Lift chain out of ground sleeve and attach cap with the caribiner about 1" above the top of the sleeve. Loop other end of chain and secure with the second padlock.



6. Drop down into ground sleeve. You're now ready to set the ground sleeve into concrete.

**NOTE: STORE THE PADLOCK KEYS IN A SAFE PLACE AS YOU WILL NEED THEM TO SECURE YOUR SOCCER GOAL DURING PLAY!**

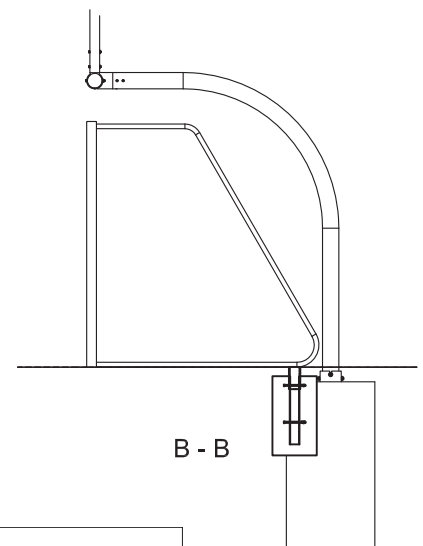
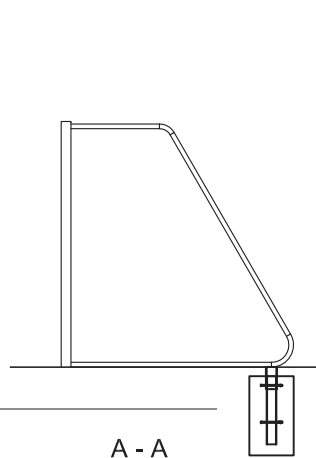
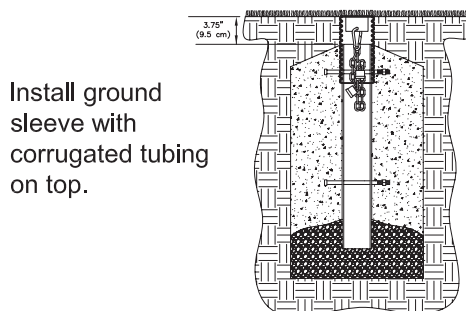
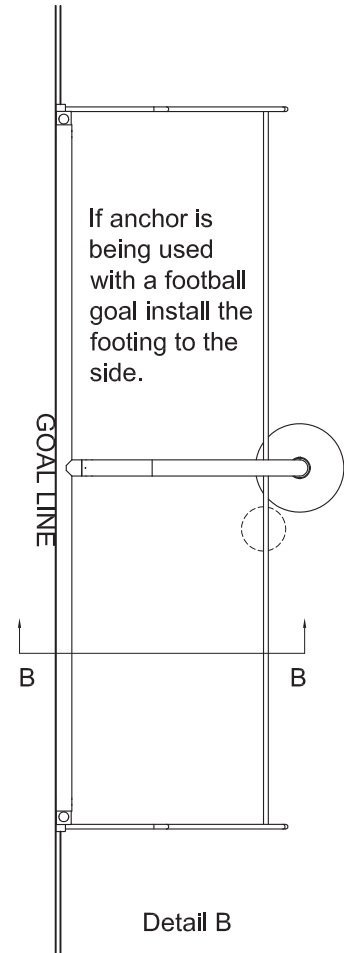
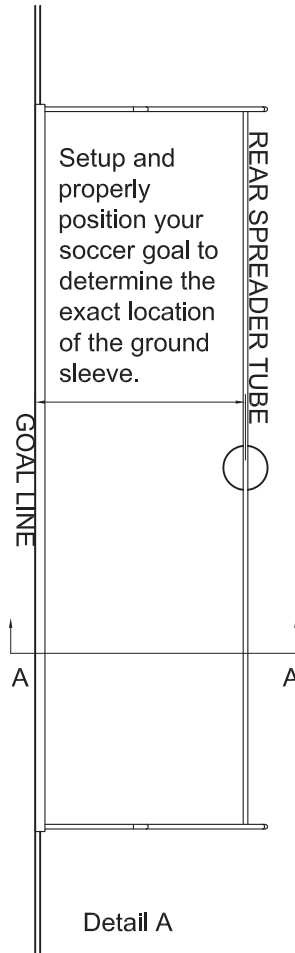
This anchor is best suited for turf fields without football goals but can be used with football goals.

Read all instructions before installing.

Local soil conditions will determine the actual size of concrete foundations. The following instructions are recommendations only, and should be considered minimums. Locate the correct position of the soccer goal according to plans and specs. Once the goal is in place the ground sleeve location should be in underneath the center of the rear spreader tube. Excavate a hole which is at least 18" across and 36" deep. Set a form for a concrete foundation. An 18" diameter cardboard tube or corrugated metal pipe is recommended. The top of the form should be 3 3/4" below finished grade (use top of infill material as finished grade elevation). Locate the formwork so that the ground sleeve will be centered within the form. Pack a 4 1/2" deep bed of rocks at the bottom of the formwork to allow drainage.

Center the ground sleeve on the bed of rocks with the corrugated tubing on top. Place rock or fill material around the bottom of the sleeve to prevent it from moving. Using grade stakes and lumber secure the top of the sleeve in a level and plumb position. Pour concrete around the outside of the sleeve to the top of the form being careful not to move the ground sleeve. The concrete must be allowed to fully cure before it can safely secure a soccer goal.

If the anchor is installed in a field with a football goal then the hole should be moved just to the side of the footing for the goal post.



**WARNING:** Cancer and Reproductive Harm –  
For more information go to [www.p65warnings.ca.gov](http://www.p65warnings.ca.gov)