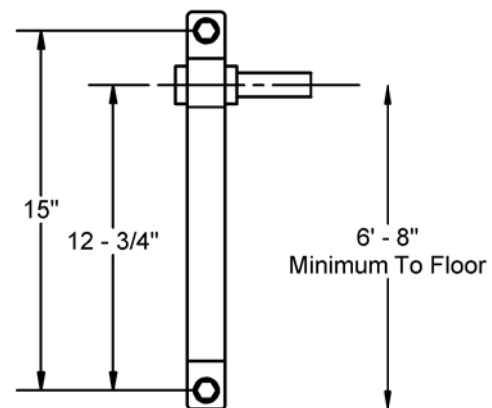
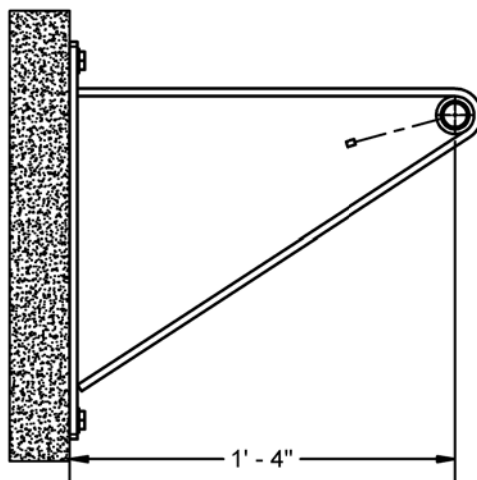
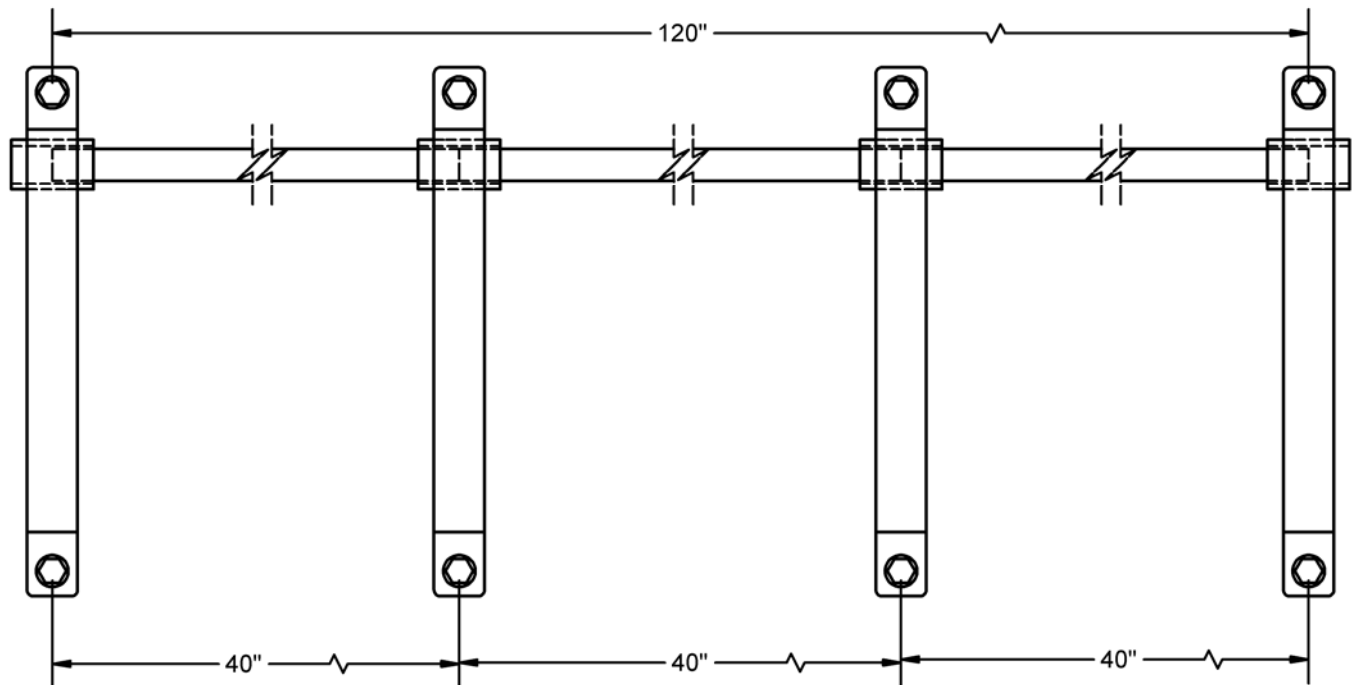


00196013 PART LIST			
ITEM #	PART #	QTY.	DESCRIPTION
1	ROND001340E1	3	CHINNING BAR; 1" OD X 40" LG; ZINC
2	FITG00258	1	4 PACK; FRME00310001; CHIN-UP SUPPORT BRACKETS

**• SAVE THESE INSTRUCTIONS FOR FUTURE USE •**

**00196-013 Wall Mounted Chinning Bar**



1. Check all items against Parts List on Page1 to ensure all have been included.
2. Carefully position four Support Brackets to three Bar Sections. Note that Bar Sections are engaged evenly in each of the Support Brackets. The ends of each Bar Section will be centered in the connector on the Support Brackets. Finished length of Chinning Bar is 10' - 0".
3. Secure Support Brackets to Bar Section with M6 - 1.0 x 1cm long Set Screws - two Set Screws at each support bracket. Tighten securely.
4. Mount Chinning Bar to wall using hardware provided - M12 x 60 mm Hex Head Lag Screw, M12 Flatwasher, and Wall Anchor - two at each Support Bracket. NOTE - Chinning Bar MUST be installed at a minimum height above the finished floor for safety.