



www.gillathletics.com  
800-637-3090

# **Assembly, Maintenance & Usage Manual**

## ***Seating Systems***

***No. 379283 - Indoor Tip & Roll - 3 Rows, 8' Long***

***No. 379163 - Indoor Tip & Roll - 3 Rows, 16' Long***

***No. 3780916 - Tip & Roll Bi-directional - 3 Rows, 16' Long***

***No. 381083 - Outdoor - 3 Rows, 8' Long***

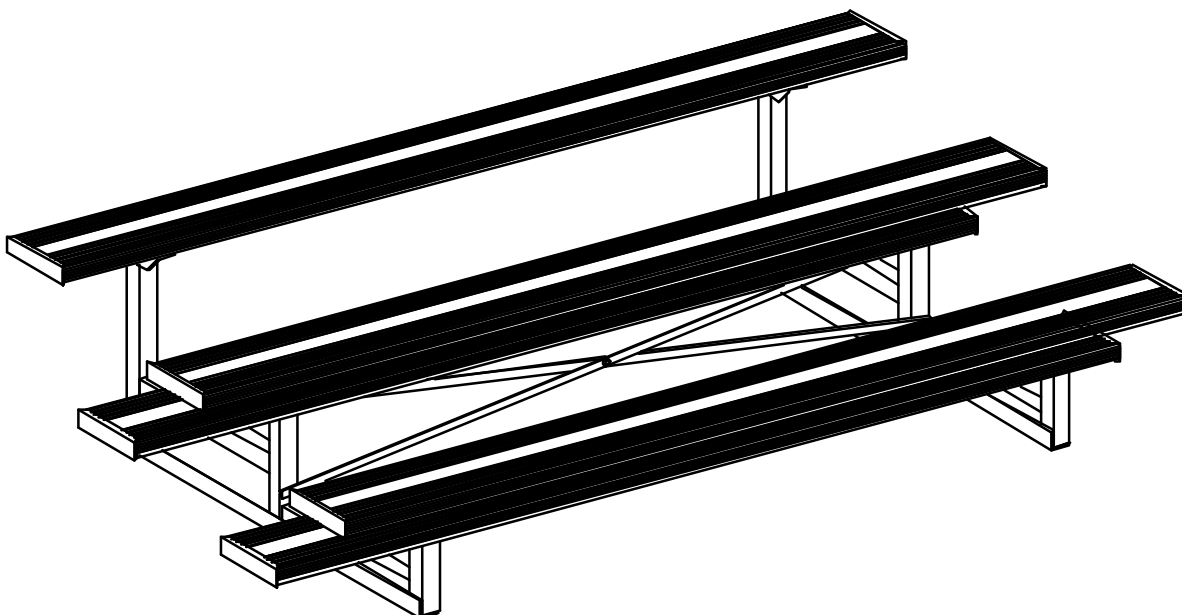
***No. 381084 - Outdoor - 4 Rows, 8' Long***

***No. 381085 - Outdoor - 5 Rows, 8' Long***

***No. 381163 - Outdoor - 3 Rows, 16' Long***

***No. 381164 - Outdoor - 4 Rows, 16' Long***

***No. 381165 - Outdoor - 5 Rows, 16' Long***



### **INSTALLER NOTE:**

**Upon completion of the assembly/installation of this seating system, make sure this instruction manual is in the possession of the owner or facility manager, to save for future reference, and to order replacement parts**



www.gillathletics.com  
800-637-3090

## SAFETY INSTRUCTIONS

- READ ALL INSTRUCTIONS BEFORE USE TO AVOID INJURY.
- IMPROPER USE OF PRODUCT CAN RESULT IN SERIOUS INJURY.
- READ ALL PRODUCT SAFETY LABELS.
- KEEP THIS INSTRUCTION MANUAL FOR FUTURE REFERENCE.



### WARNING

- BLEACHERS MUST NOT BE PLACED IN CLOSE PROXIMITY TO THE ACTIVITY AREA / FIELD OF PLAY. AN ADEQUATE SAFETY BUFFER ZONE FROM THE GAME LINE TO THE BLEACHER STRUCTURE MUST BE PROVIDED FOR THE SAFETY OF ATHLETES AND SPECTATORS.
- THE OWNER OF THIS EQUIPMENT IS RESPONSIBLE TO ENSURE THAT ALL INDIVIDUALS FOLLOW THE SAFETY AND OPERATING INSTRUCTIONS TO AVOID INJURIES OR PROPERTY DAMAGE. PROPER USE AND SUPERVISION OF THIS EQUIPMENT IS ESSENTIAL TO HELP REDUCE THE POSSIBILITY OF ACCIDENTS OR INJURIES.
- KEEP WARNING LABELS CLEARLY VISIBLE AT ALL TIMES.

#### NOTE:

**NOTE - At all times, ensure that the warning labels are in place on the top seatboard, are fully visible, and are not worn or faded. Contact Gill Athletics, Inc. for additional copies of this label as required for replacement.**



### WARNING

#### FALL HAZARD!

LABL00533000

DO NOT STAND OR WALK ON THIS SEATBOARD



### CAUTION

- CHECK LOCAL BUILDING AND SAFETY CODES FOR COMPLIANCE WITH APPLICABLE CODES, BEFORE INSTALLING ANY SEATING SYSTEMS.
- INSTALLATION / ASSEMBLY OF THIS EQUIPMENT MUST BE DONE ONLY BY ADULTS, WHO ARE PHYSICALLY CAPABLE OF DOING SO.
- CHECK ALL COMPONENTS FOR STRUCTURAL INTEGRITY. REPLACE DAMAGED COMPONENTS IMMEDIATELY.
- CHECK ALL CONNECTING HARDWARE BEFORE EVERY USE. REPLACE DAMAGED OR MISSING FASTENERS IMMEDIATELY.

### NOTICE

#### MAXIMUM SEATING CAPACITY FOR ALL SEATING SYSTEMS

3 Row, 8' Long Systems - 15 Persons  
4 Row, 8' Long Systems - 20 Persons  
5 Row, 8' Long Systems - 25 Persons

3 Row, 16' Long Systems - 30 Persons  
4 Row, 16' Long Systems - 40 Persons  
5 Row, 16' Long Systems - 50 Persons



**WARNING:** Cancer and Reproductive Harm –  
For more information go to [www.p65warnings.ca.gov](http://www.p65warnings.ca.gov)

F



www.gillathletics.com  
800-637-3090

#### TOOLS REQUIRED:

- 1/2" Wrench
- 9/16" Wrenches
- 11/16" Wrenches
- Tape Measure

#### PARTS LIST: No. 379, INDOOR TIP & ROLL, 3 ROW

Item No.	Part No.	379283	379163	Description
		Quantity	Quantity	
1	FRME 379 3 G	2	3	Frame
2	ANGL 00241 0G0	2	4	"X" Brace: 6'-2" Lg.
3	HDWE 01124 0E0	5	8	3/8" x 1" Lg. Hex Head Cap Screw (Grade 5)
4	HDWE 01125 0E0	8	12	3/8" x 1-1/4" Lg. Hex Head Cap Screw (Grade 5)
5	HDWE 04002 0E0	13	20	3/8" Lock Washer
6	HDWE 03002 0E0	13	20	3/8" Hex Nut
7a	M86008	4		Plank for Seatboard or Footboard: 8' Lg.
7b	M86008L	1		Plank for Seatboard: 8' Lg. with Warning Labels
8a	M86016		4	Plank for Seatboard or Footboard: 16' Lg.
8b	M86016L		1	Plank for Seatboard: 16' Lg. with Warning Labels
9	ECAP 380 11	10	10	End Cap
10	HDWE 06228	20	20	5/8" Self Drilling Pan Head Screw
11	CLMP 380 10	20	30	Plank Clamp with Hardware
12	FEET 00035 000	8	12	Foot
13	HDWE 05002 0E0	8	12	5/16" Flat Washer
14	CSTR 00017 000	4	6	Swivel Caster
15	HDWE 04003 0E0	4	6	1/2" Lock Washer
16	HDWE 03047 0E0	4	6	7/16" Hex Nut

#### PARTS LIST: No. 381, OUTDOOR, 3 ROW

Item No.	Part No.	381083	381163	Description
		Quantity	Quantity	
1	FRME 380 3 G	2	3	Frame
2	BRCE 380 2 G	2	4	"X" Brace: 6' 2-3/4" Lg.
3	HDWE 01124 0E0	5	8	3/8" x 1" Lg. Hex Head Cap Screw (Grade 5)
4	HDWE 04002 0E0	5	8	3/8" Lock Washer
6	HDWE 03002 0E0	5	8	3/8" Hex Nut
6a	M86008	4		Plank for Seatboard or Footboard: 8' Lg.
6b	M86008L	1		Plank for Seatboard: 8' Lg. with Warning Labels
7a	M86016		4	Plank for Seatboard or Footboard: 16' Lg.
7b	M86016L		1	Plank for Seatboard: 16' Lg. with Warning Labels
8	ECAP 380 11	10	10	End Cap
9	HDWE 06228	20	20	5/8" Self Drilling Pan Head Screw
10	CLMP 380 10	20	30	Plank Clamp with Hardware

#### PARTS LIST: No. 381, OUTDOOR, 4 ROW

Item No.	Part No.	381084	381164	Description
		Quantity	Quantity	
1	FRME 380 4 G	2	3	Frame
2	BRCE 380 2 G	2	4	"X" Brace: 6' 2-3/4" Lg.
3	BRCE 380 4 G	2	4	"X" Brace: 6' 4-3/4" Lg.
4	HDWE 01124 0E0	10	16	3/8" x 1" Lg. Hex Head Cap Screw (Grade 5)
5	HDWE 04002 0E0	10	16	3/8" Lock Washer
6	HDWE 03002 0E0	10	16	3/8" Hex Nut
7a	M86008	6		Plank for Seatboard or Footboard: 8' Lg.
7b	M86008L	1		Plank for Seatboard: 8' Lg. with Warning Labels
8a	M86016		6	Plank for Seatboard or Footboard: 16' Lg.
8b	M86016L		1	Plank for Seatboard: 16' Lg. with Warning Labels
9	ECAP 380 11	14	14	End Cap
10	HDWE 06228	28	28	5/8" Self Drilling Pan Head Screw
11	CLMP 380 10	28	42	Plank Clamp with Hardware

#### PARTS LIST: No. 381, OUTDOOR, 5 ROW

Item No.	Part No.	381085	381165	Description
		Quantity	Quantity	
1	FRME 380 5 G	2	3	Frame
2	BRCE 380 2 G	2	4	"X" Brace: 6' 2-3/4" Lg.
3	BRCE 380 5 G	2	4	"X" Brace: 6' 6-1/4" Lg.
4	HDWE 01124 0E0	10	16	3/8" x 1" Lg. Hex Head Cap Screw (Grade 5)
5	HDWE 04002 0E0	10	16	3/8" Lock Washer
6	HDWE 03002 0E0	10	16	3/8" Hex Nut
7a	M86008	8		Plank for Seatboard or Footboard: 8' Lg.
7b	M86008L	1		Plank for Seatboard: 8' Lg. with Warning Labels
8a	M86016		8	Plank for Seatboard or Footboard: 16' Lg.
8b	M86016L		1	Plank for Seatboard: 16' Lg. with Warning Labels
9	ECAP 380 11	18	18	End Cap
10	HDWE 06228	36	36	5/8" Self Drilling Pan Head Screw
11	CLMP 380 10	36	54	Plank Clamp with Hardware

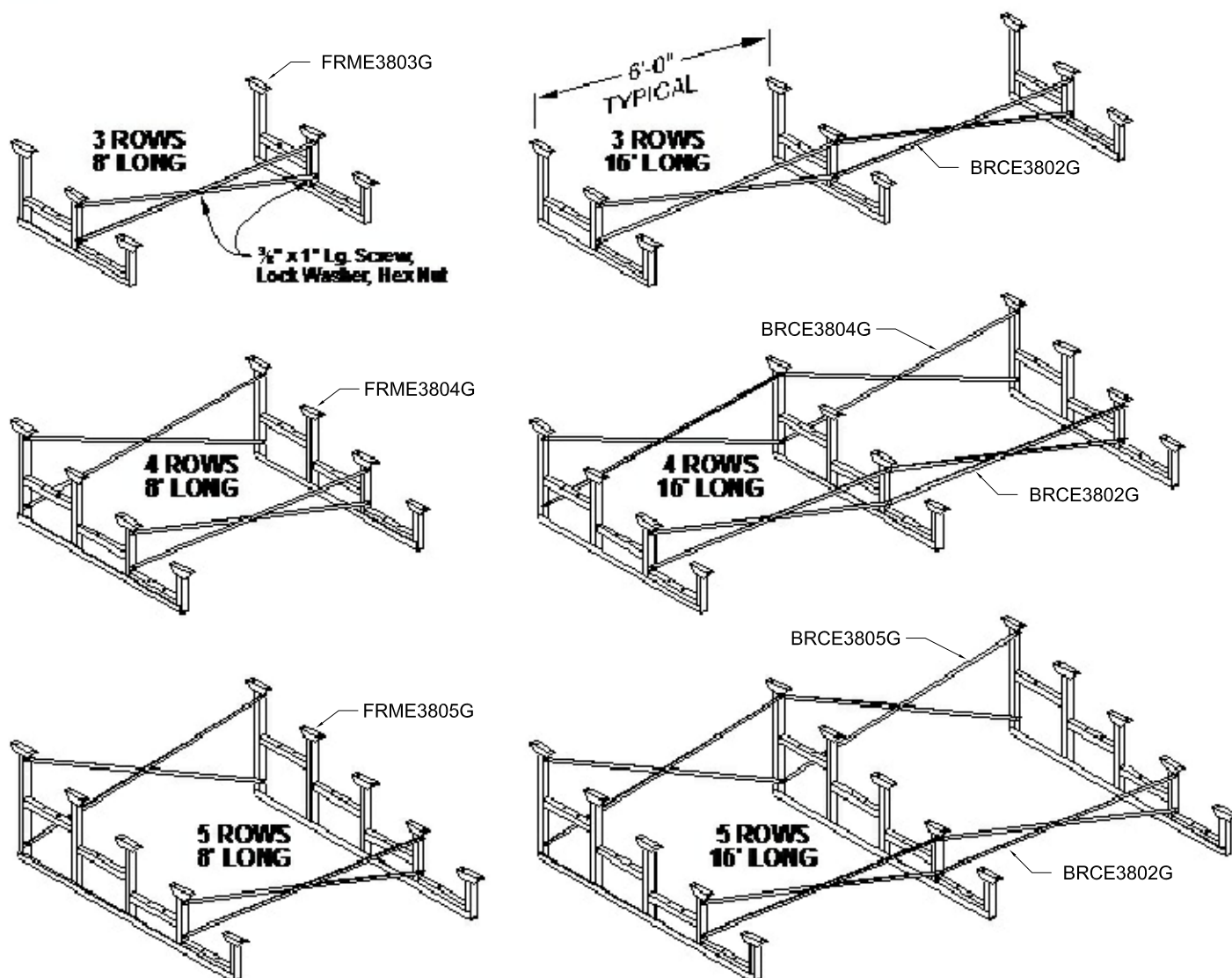


www.gillathletics.com  
800-637-3090

## ASSEMBLY INSTRUCTIONS

1. Check all parts against appropriate Parts List on previous page to make sure all have been included.
2. Indoor Tip & Roll Seating Systems Only. Assemble four feet (12) to each frame (1) with 3/8" x 1-1/4" lg. hex head cap screw (4), 5/16" flat washer (13), 3/8" lock washer (5) and 3/8" hex nut (6). See Detail "D" on Page 7.
3. Assemble "X" bracing and frames together. The "X" bracing is secured to the frames with 3/8" x 1" lg. hex head cap screws, 3/8" lock washers and 3/8" hex nuts. Each section of "X" bracing is secured where the two braces cross each other, with the same hardware. Tighten ALL hardware securely. When assembled, the frames will be spaced 6'-0" apart. See Detail "A".

Detail "A"

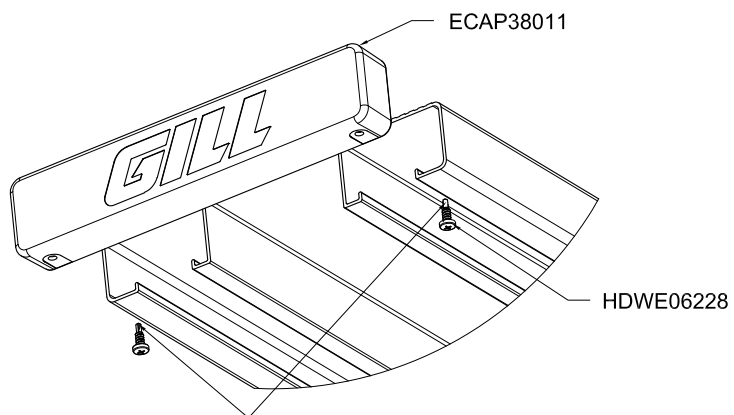




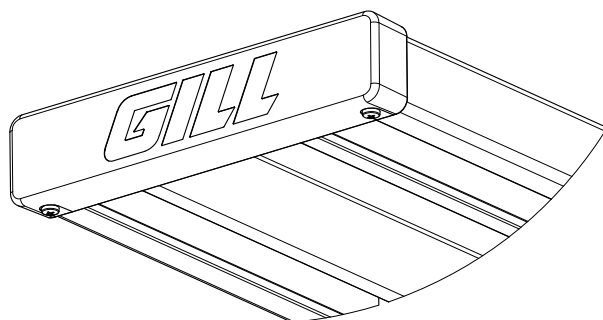
www.gillathletics.com  
800-637-3090

**4. End caps must be installed and secured to both ends of all planks. See Detail "B".**

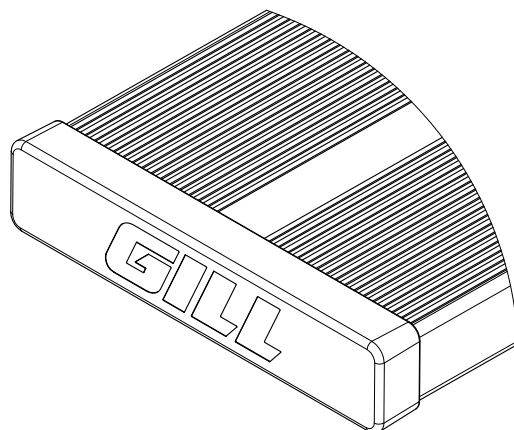
Detail "B"



Install endcap onto end of plank. Secure in place with two self drilling screws. Repeat for the other end of plank.



Appearance of assembled endcap and plank





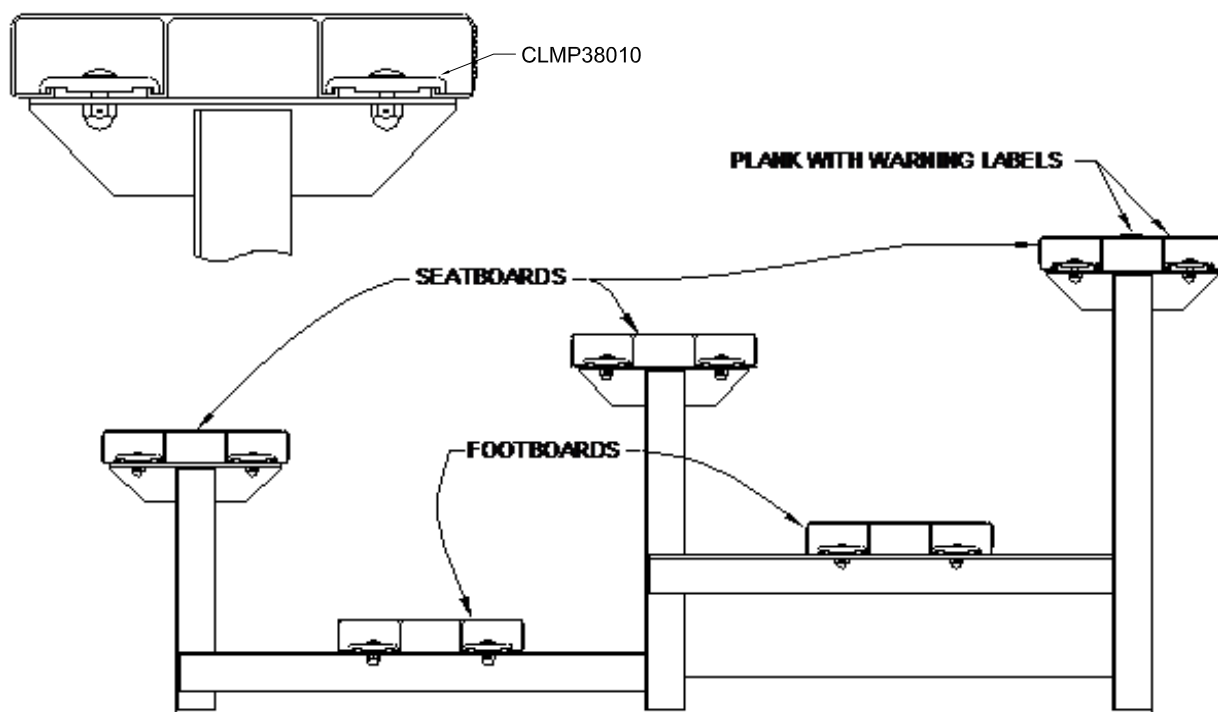
www.gillathletics.com  
800-637-3090

5. Install plank assemblies onto frames. The plank assemblies are secured to the frames with the plank clamps, using the hardware included with each plank clamp. Make sure the plank assemblies overhang the frames equally on each side. See Detail "C". The same plank assembly is used for all seatboards and footboards, except for the upper seatboard.

**NOTE - EACH SEATING SYSTEM IS SUPPLIED WITH ONE PLANK ASSEMBLY THAT INCLUDES WARNING LABELS. THIS PLANK ASSEMBLY *MUST* BE LOCATED AT THE TOP OF THE SEATING SYSTEM (THE TOP SEATBOARD). See Detail "C".**

#### Detail "C"

#### INSTALLATION OF PLANKS (3-ROW SEATING SHOWN)



**PLANK ASSEMBLIES MUST OVERHANG FRAME WELDMENTS EQUALLY ON EACH SIDE**

6. Assembly of No. 381 Outdoor Seating Systems is now complete. Proceed to Step No. 7 on Page 7 if installing Tip & Roll Seating Systems.

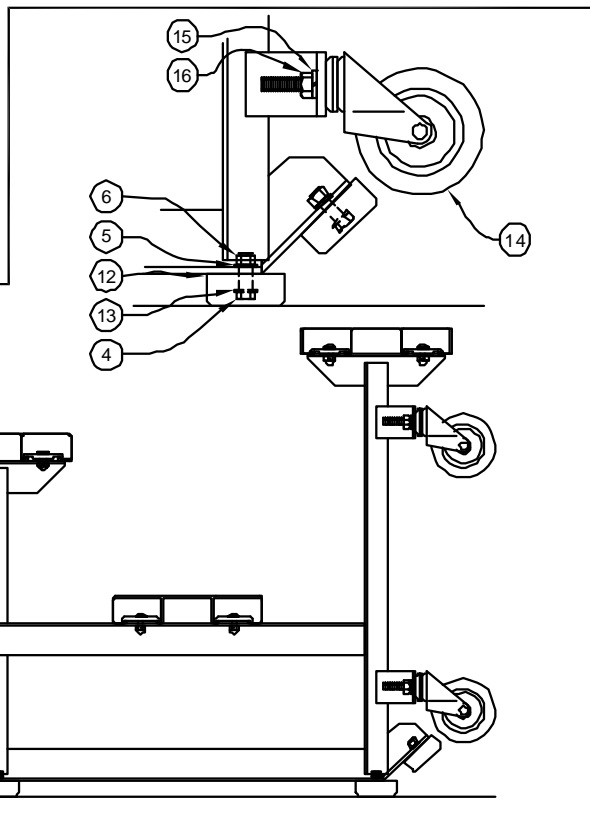


www.gillathletics.com  
800-637-3090

**7. Assemble two swivel casters (14) to each frame (1) with 1/2" lock washer (15) and 7/16" hex nut (16). See Detail "D".**

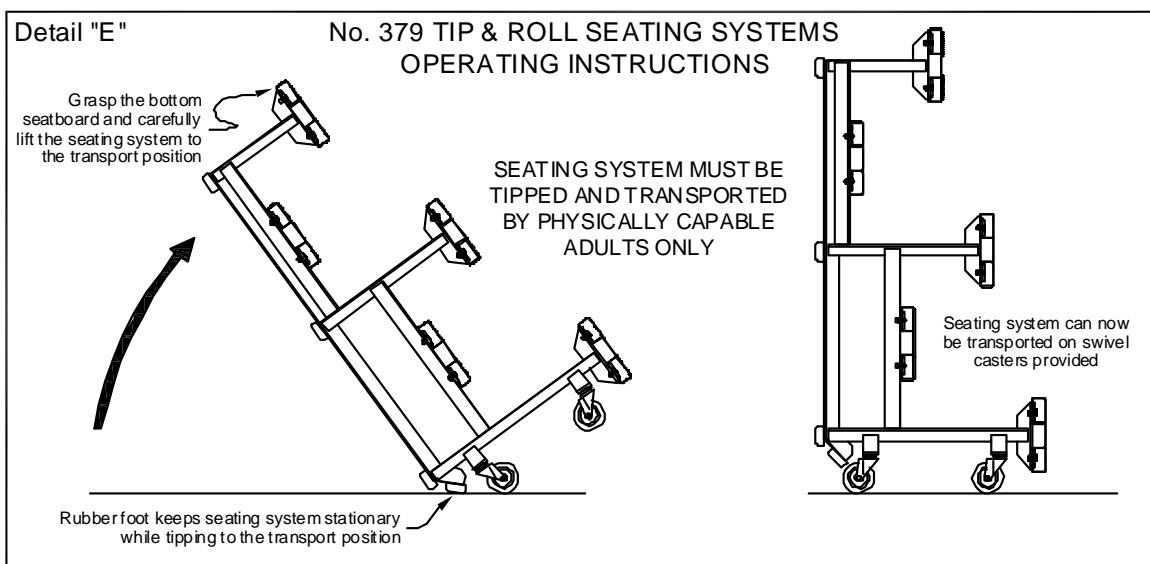
**8. Assembly of Indoor Tip & Roll Seating Systems is now complete.**

Item No.	Part No.	Description
4	HDWE 01125 0E0	3/8" x 1-1/4" Lg. Hex Screw
5	HDWE 04002 0E0	3/8" Lock Washer
6	HDWE 03002 0E0	3/8" Hex Nut
12	FEET 00035 000	Foot
13	HDWE 05002 0E0	5/16" Flat Washer
14	CSTR 00017 000	Swivel Caster
15	HDWE 04003 0E0	1/2" Lock Washer
16	HDWE 03047 0E0	7/16" Hex Nut



Detail "D"

**9. See Detail "E" below for Operating Instructions.**





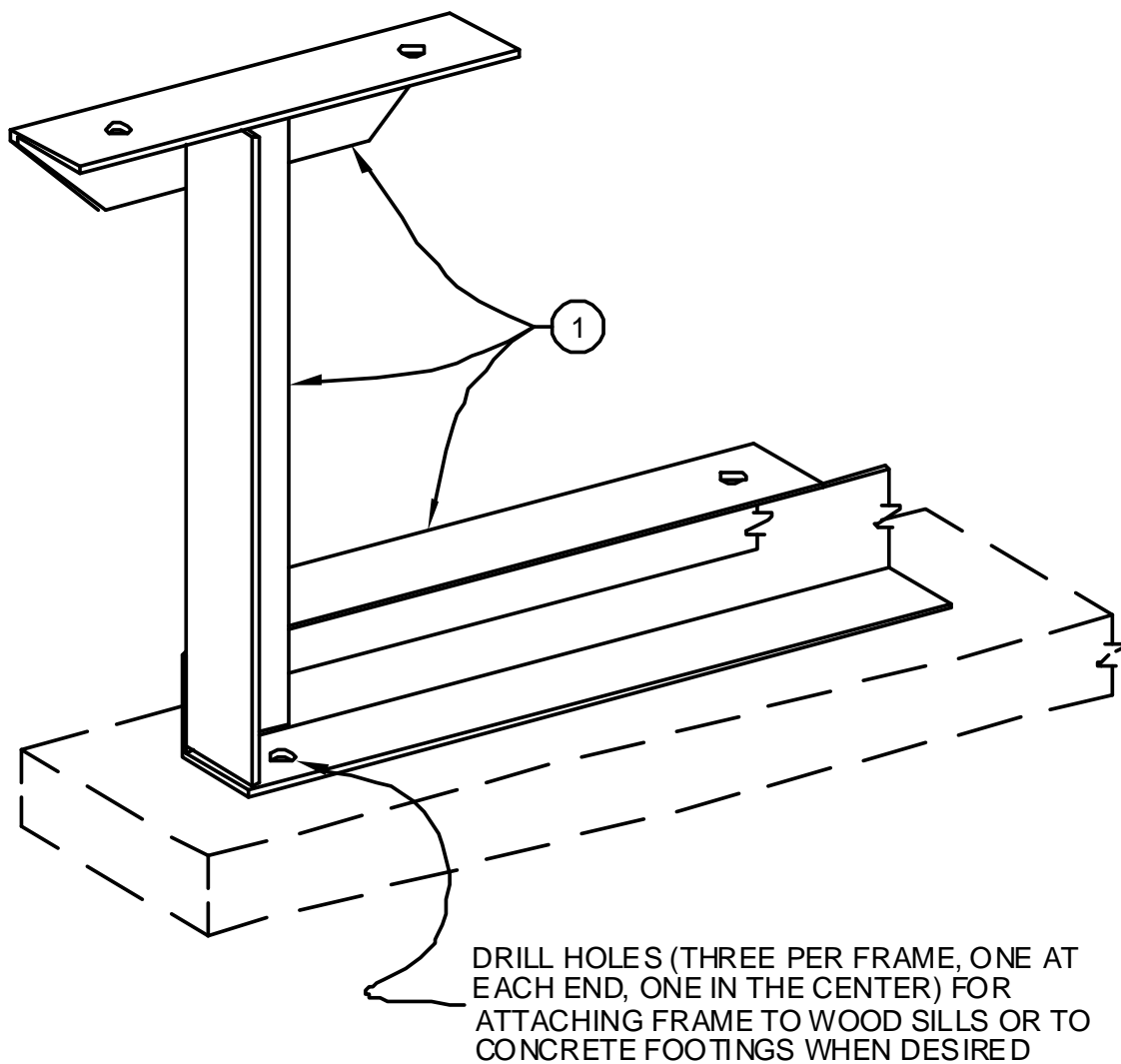
www.gillathletics.com  
800-637-3090

**No. 381 OUTDOOR SEATING SYSTEMS ONLY**

**IMPORTANT NOTE**

**ALL OUTDOOR SEATING SYSTEMS MUST BE  
ANCHORED TO RESIST WIND LOADS.**

Detail "F"



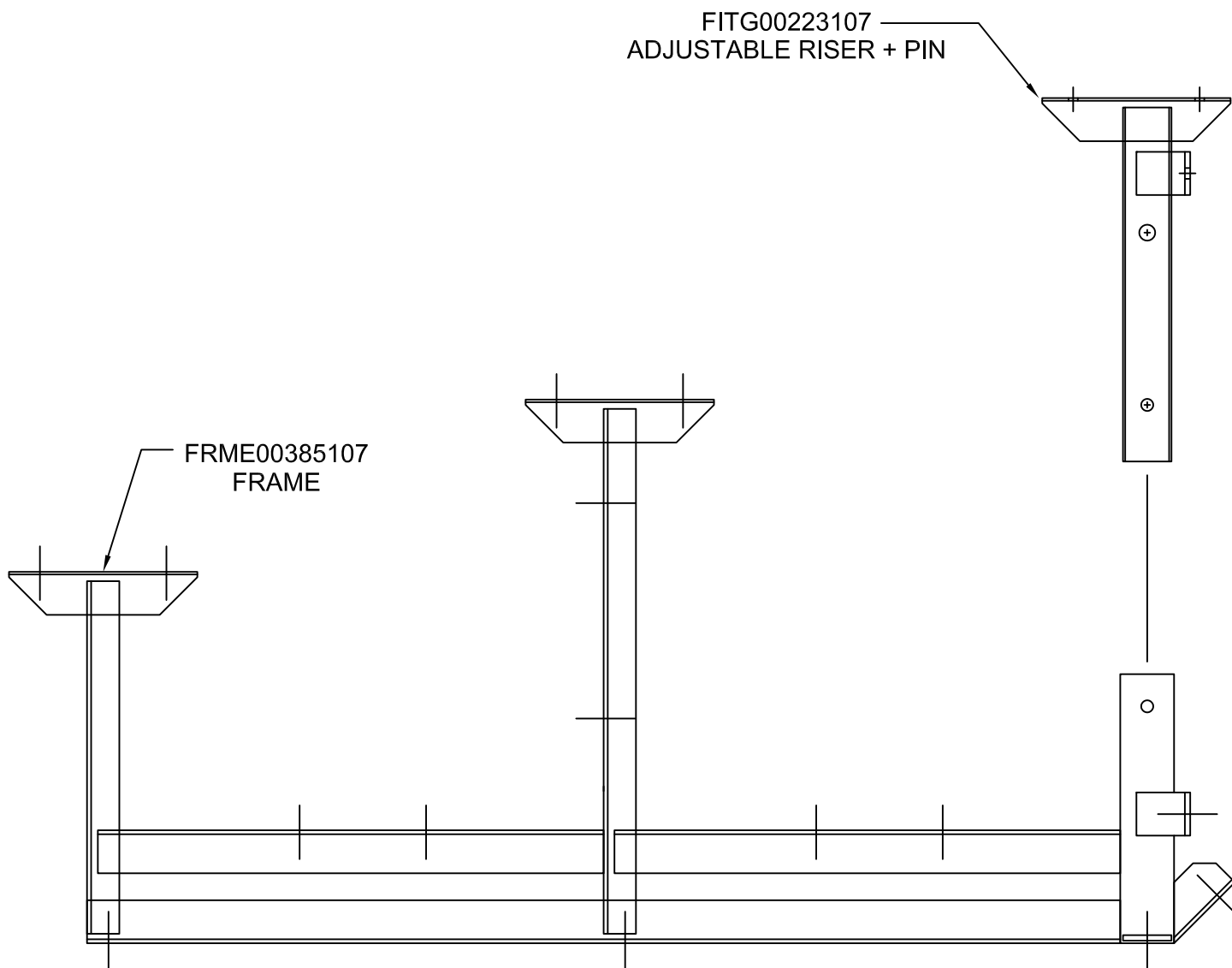
**In order to anchor each outdoor seating system, the bottom angle of each frame (1) must be drilled with three holes. These holes are for attaching the frames to wood sills (not provided), or to concrete footings. See Detail "F".**





www.gillathletics.com  
800-637-3090

**No80916 TIP . 37& ROLL - SILVER**



**SAVE THESE INSTRUCTIONS FOR FUTURE USE**