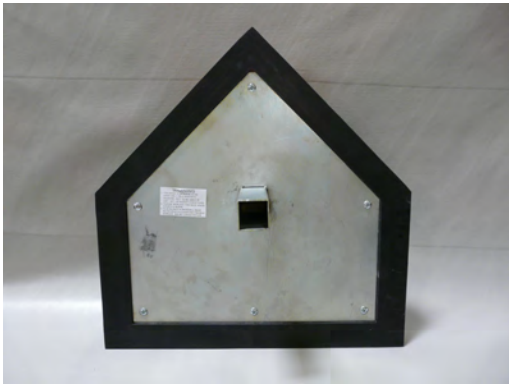




## INSTALLATION, OPERATION & MAINTENANCE MANUAL

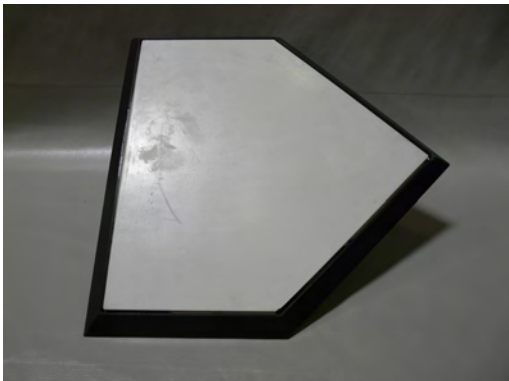
**HOME PLATE W/ GROUND ANCHOR - 33250**  
**SHOCK ABSORBING BASES (SET OF 3) - 33251**  
**BASEBALL 4- WAY PITCHERS' RUBBER - 33252**  
**RUBBER BASE ANCHOR (SET OF 3) - 33253**  
**GROUND ANCHOR SET (SET OF 3) - 33254**  
**ORANGE BASE PLUGS (SET OF 3) - 33255**



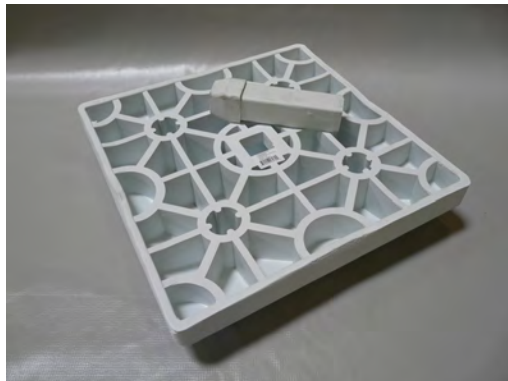
**33250**



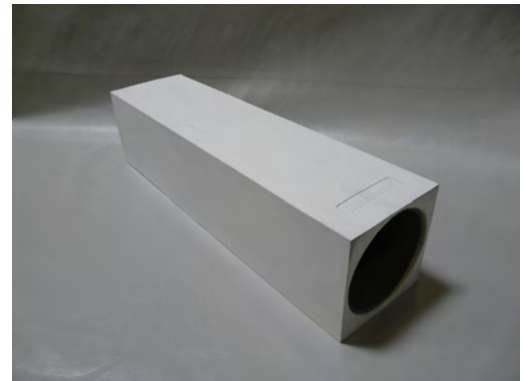
**33251**



**33253**



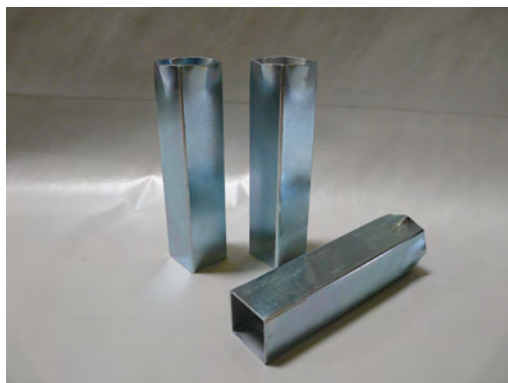
**33254**



**33252**

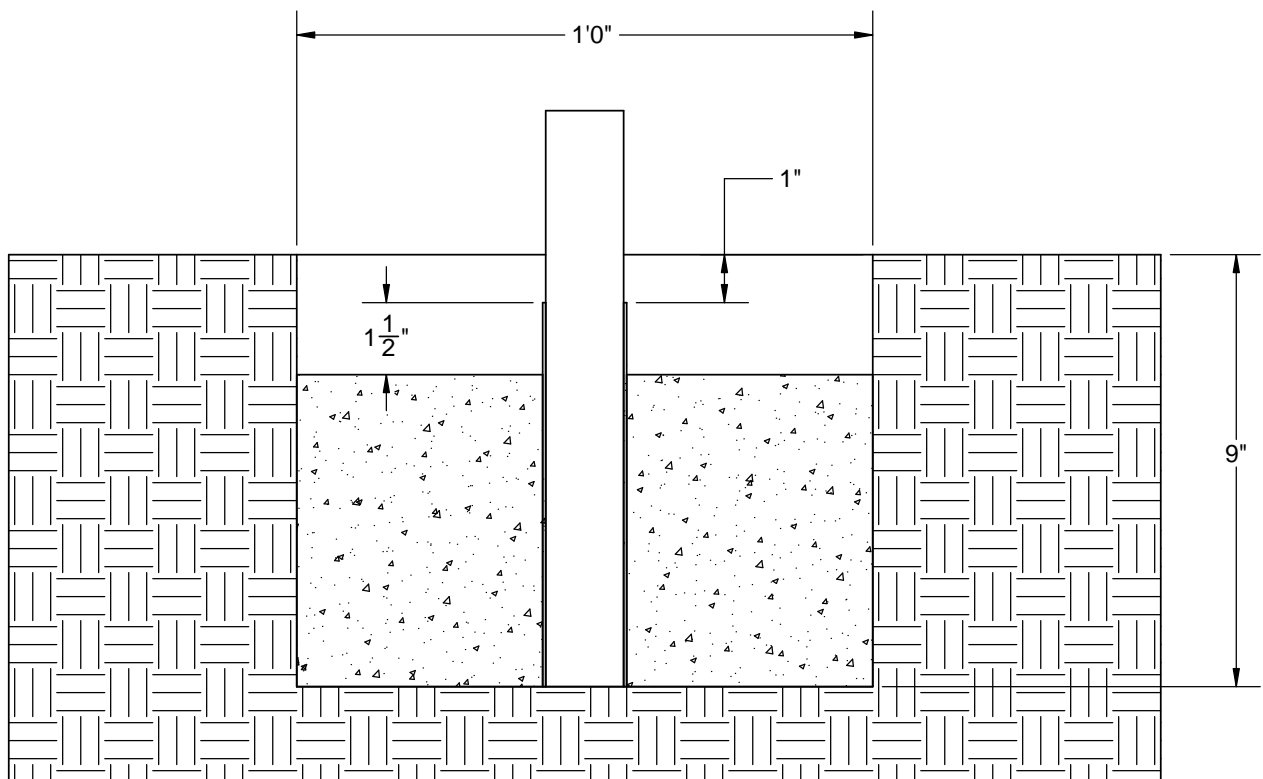


**33255**



## ANCHOR INSTALLATION

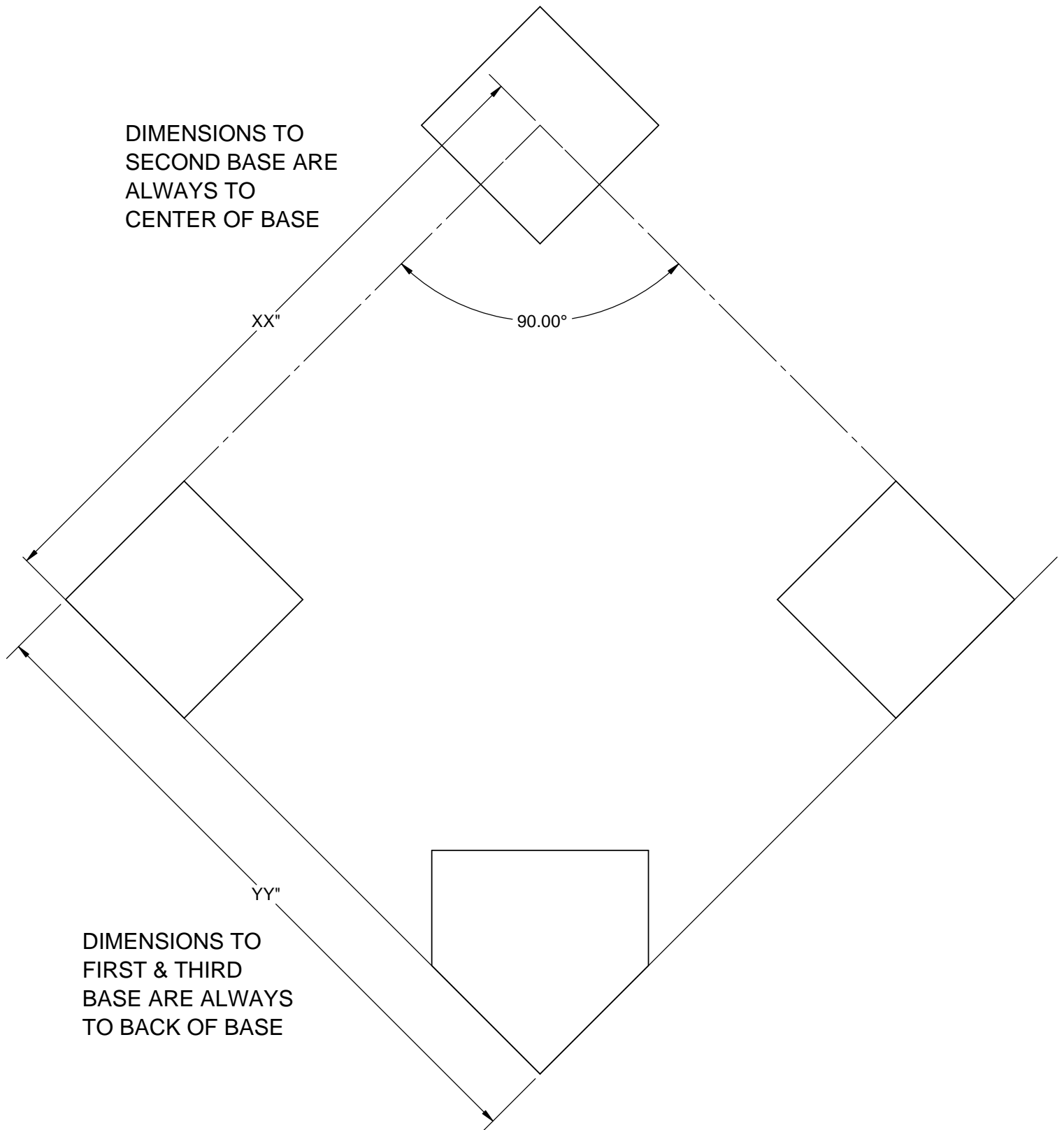
1. Excavate a 12" X 12" square hole, nine (9") inches below average ground level.
2. Insert a 1 1/2" square wooden stake into anchor. Check vertical position of stake both ways with a level to make sure anchor is plum.
3. Press into soil so top of anchor rim is one (1) inch below average ground level of playing field. Check with long wooden straight edge to be sure of proper positioning.
4. Mix and pour enough concrete to embed anchor up to approximately 1 1/2" from top of tube. Allow concrete to harden completely before removal of stake.
5. After concrete dries, dirt can be brushed over surface of concrete to within a few inches of the tube opening. Base should always be flat on ground during play.
6. If ground anchor should become plugged with dirt at any time, it can be easily cleaned by using a clean out tool.



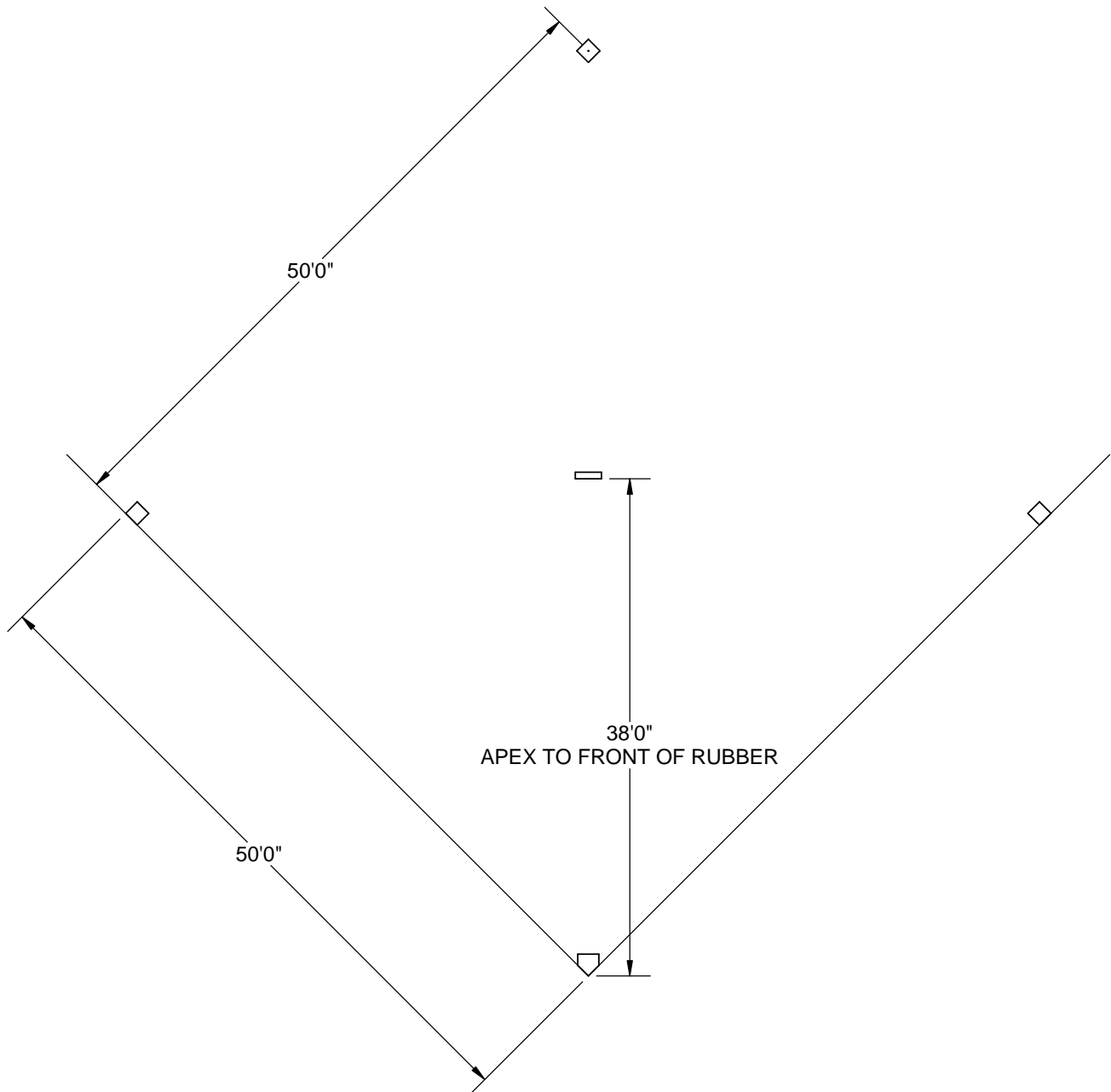


www.gillathletics.com  
800-637-3090

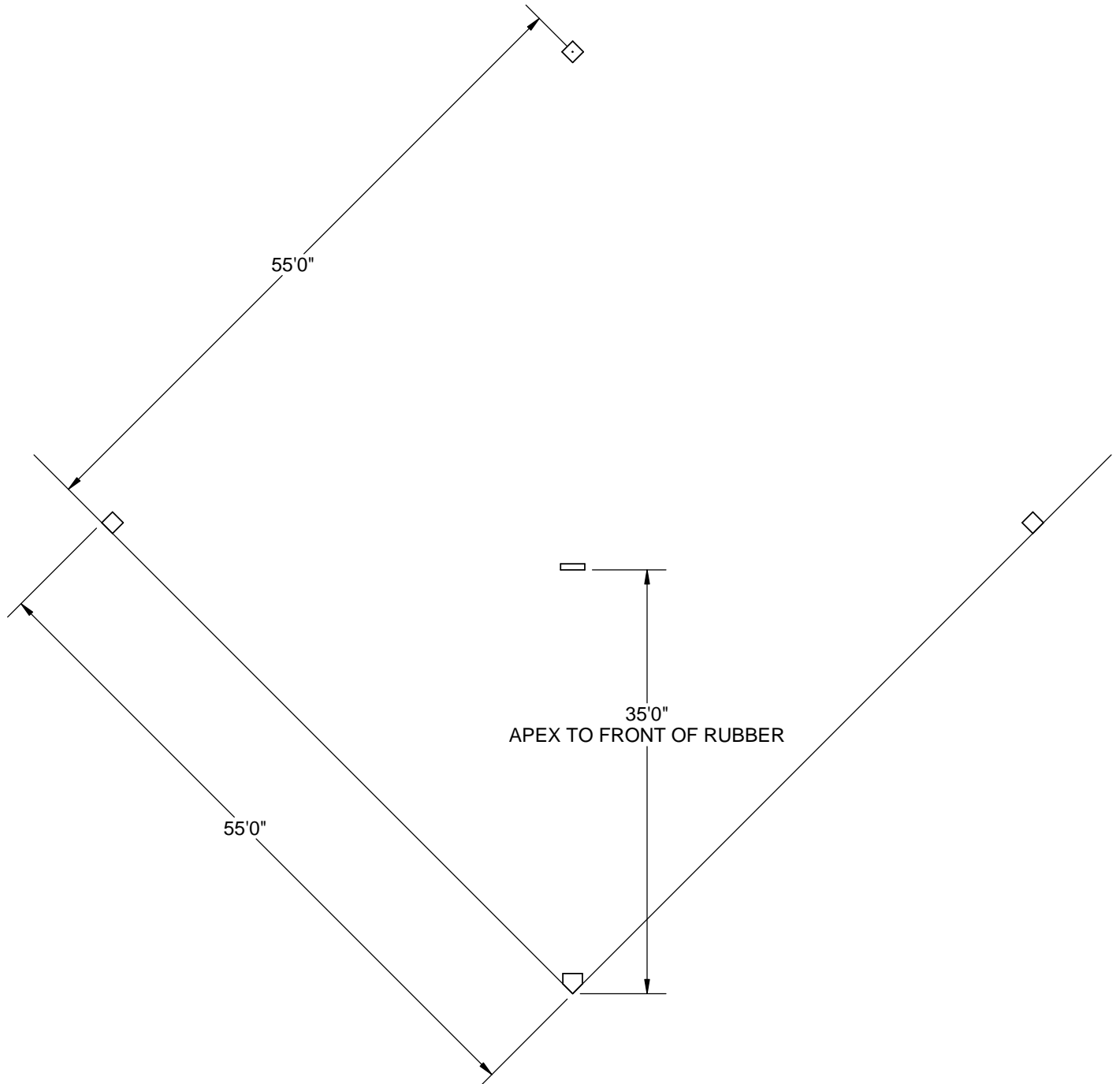
## BASEBALL FIELD INSTRUCTIONS& LAYOUT



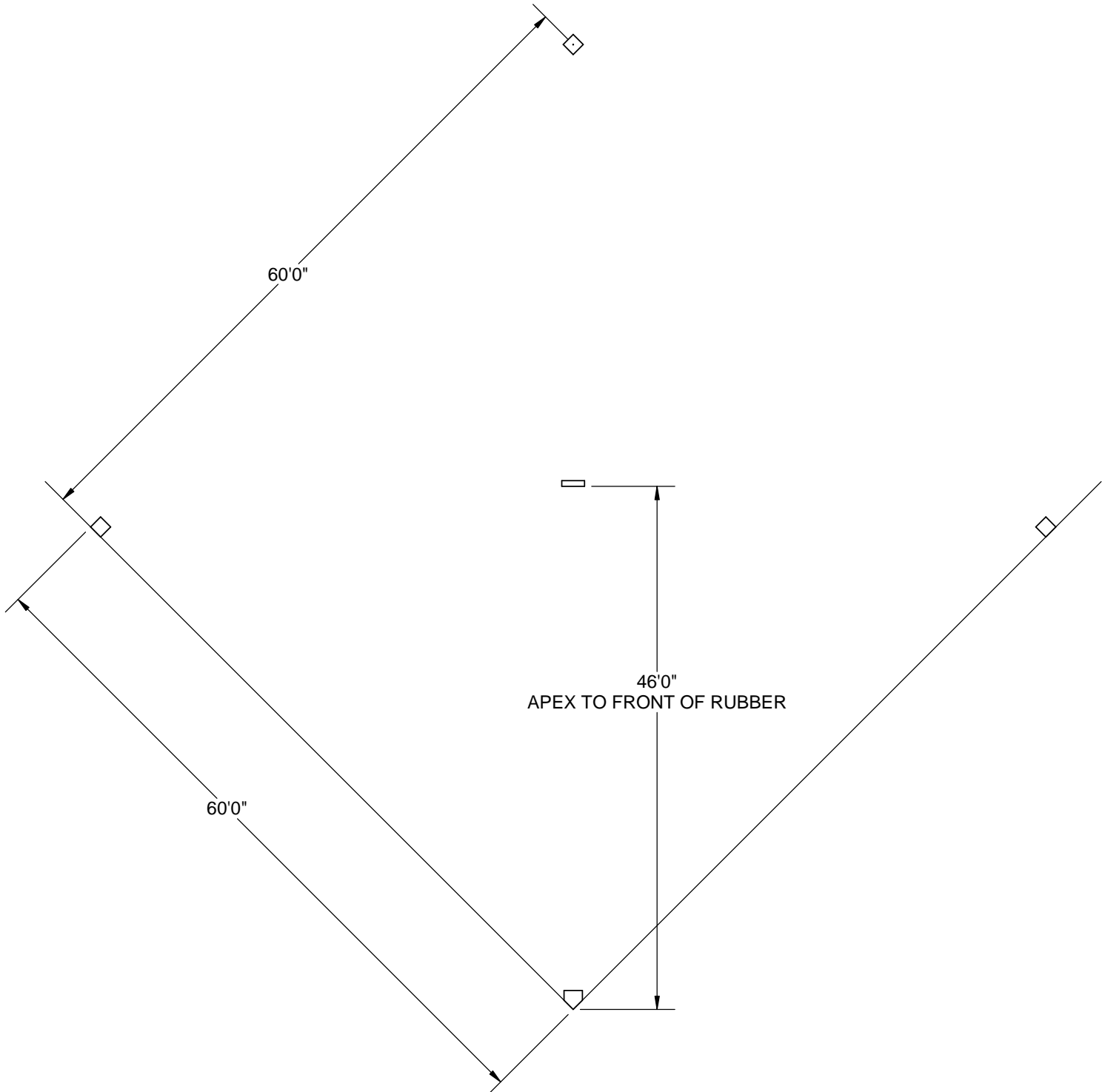
**50' BASE LENGTH**



**55' BASE LENGTH**



**60' BASE LENGTH**



**90' BASE LENGTH**

