



ASSEMBLY, MAINTENANCE & USAGE MANUAL

"H" STYLE FOOTBALL GOAL POSTS

No. 281181x – 18'-6" Width – 10' Uprights

No. 281182x – 18'-6" Width – 20' Uprights

No. 281231x – 23'-4" Width – 10' Uprights

No. 281232x – 23'-4" Width – 20' Uprights

WARNING

READ ALL WARNINGS THOROUGHLY BEFORE USING THIS EQUIPMENT.

FAILURE TO COMPLY WITH THE FOLLOWING INSTRUCTIONS AND WARNINGS MAY RESULT IN SERIOUS INJURIES AND/OR PROPERTY DAMAGE.

- Check all components for structural integrity. Replace damaged components immediately.
- Check all connecting hardware before every use. Replace damaged or missing fasteners immediately.
- **NEVER CLIMB ON GOALS.**

THE OWNER OF THIS EQUIPMENT IS RESPONSIBLE TO ENSURE THAT ALL INDIVIDUALS FOLLOW THE SAFETY AND OPERATING INSTRUCTIONS TO AVOID INJURIES OR PROPERTY DAMAGE. PROPER USE AND SUPERVISION OF THIS EQUIPMENT IS ESSENTIAL TO HELP REDUCE THE POSSIBILITY OF ACCIDENTS OR INJURIES.

WARNING

READ ALL INSTRUCTIONS THOROUGHLY BEFORE ATTEMPTING TO ASSEMBLE THIS EQUIPMENT. ASSEMBLY OF THIS EQUIPMENT MUST BE DONE BY PHYSICALLY CAPABLE ADULTS ONLY.

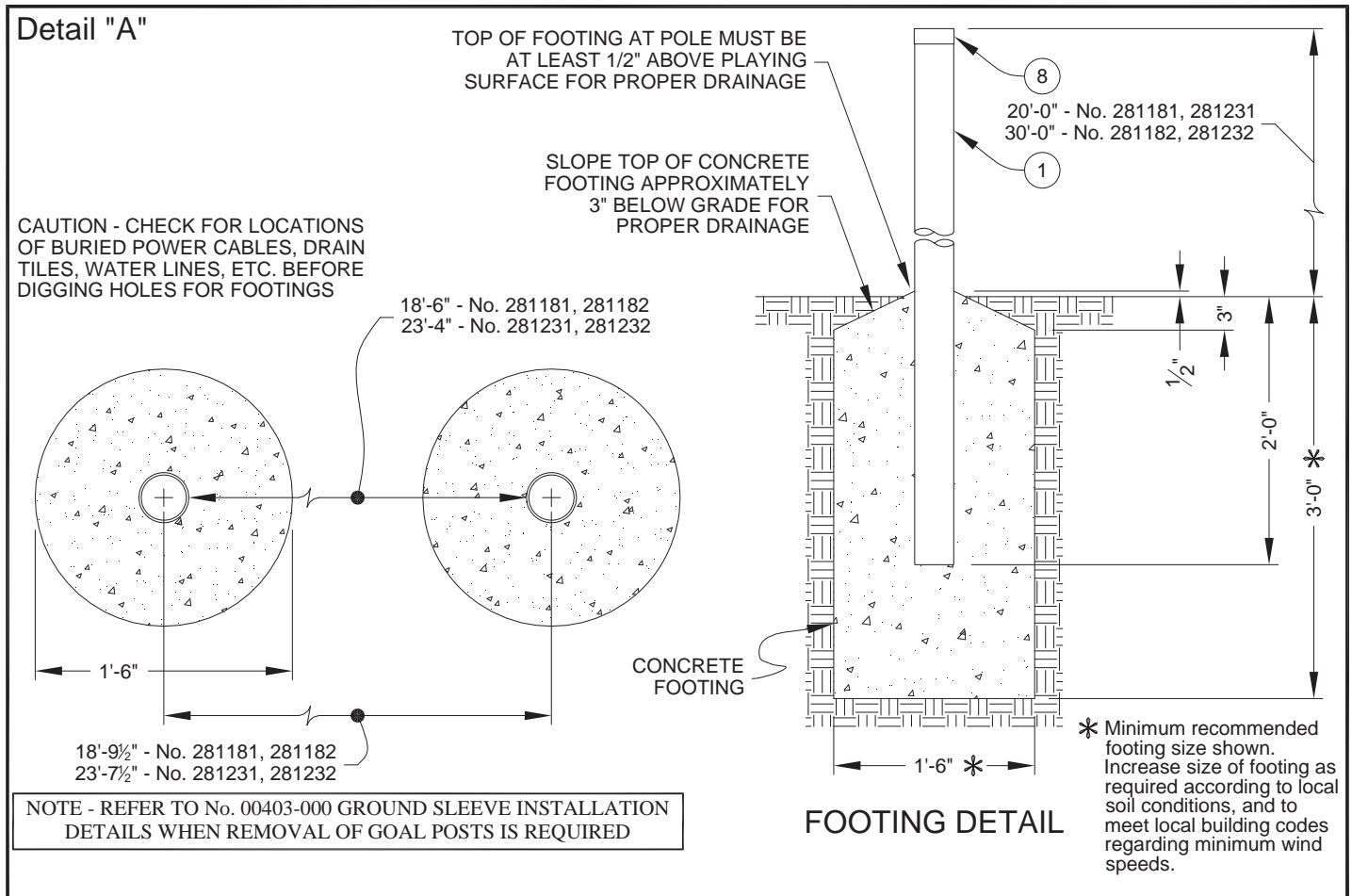
Item No.	Part No.	PARTS LIST				Description
		281181 Quantity	281182 Quantity	281231 Quantity	281232 Quantity	
1	UPRT 00047 1G0	4		4		Upright – 22'-0" Lg.
1	TUBR 00845 0G0		4		4	Upright – 32'-0" Lg.
2	UPRT 00322 0G0	2	2			Crossbar – 18'-6" Lg.
2	UPRT 00048 0G0			2	2	Crossbar – 23'-4" Lg.
3	TEES 00003 0G0	8	8	8	8	3-1/2" to 3-1/2" Tee Casting
4	HDWE 01149 0E0	4	4	4	4	1/2" x 3-1/2" Lg. Hex Head Cap Screw (Grade 5)
5	HDWE 01180 0E0	4	4	4	4	1/2" x 5" Lg. Hex Head Cap Screw (Grade 5)
6	HDWE 04003 0E0	8	8	8	8	1/2" Lock Washer
7	HDWE 03003 0E0	8	8	8	8	1/2" Hex Nut
8	PCAP 00011 0E0	4	4	4	4	3-1/2" Pipe Cap

TOOLS REQUIRED: 3/4" Wrenches Level

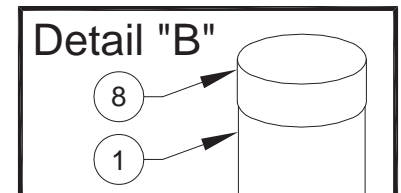
Upon completion of the assembly/installation of these goal posts, make sure this instruction manual is in the possession of the owner or facility manager, to save for future reference, and to order replacement parts.

If football goal posts are being used with outdoor ground sleeves (No. 00403-000), follow the installation instructions provided with the ground sleeves (uprights require ground sleeve anchor pins to be located in the 24" position). If football goal posts are being installed permanently into concrete footings, proceed to Step No. 1.

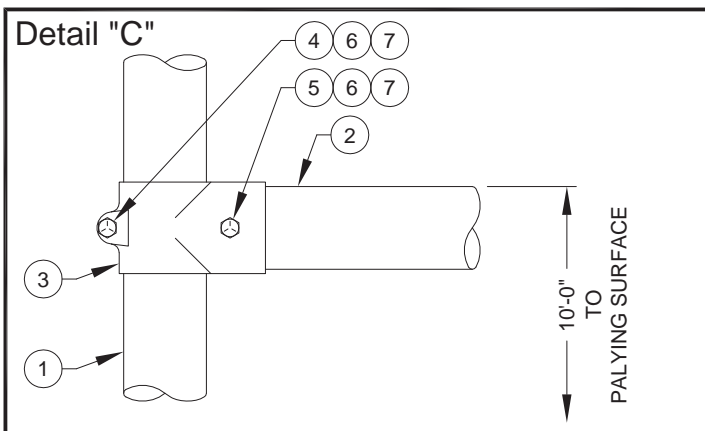
1. Locate and dig footings for each upright. **CAUTION** – Contact your local utility companies to locate buried electrical, gas and water lines before digging holes for footings. Also, check for overhead utilities. See Detail "A".



2. **IMPORTANT** – Before installing the uprights, the metal pipe cap **MUST** be installed on the top end of each upright. Failure to do so will allow water inside the upright, which will freeze and split the upright. Make sure the pipe cap is fully seated. See Detail "B".
3. Raise each upright into position in its footing. Support each upright at the proper location and height, with 2x4's, etc. The bottom end of the upright will be suspended in the hole, 2'-0" below the playing surface. See Detail "A".
4. Double-check that each upright is plumb, and is properly spaced. Make sure the top end of each upright is located the correct height above the playing surface. See Detail "A".
5. After double-checking the position of each upright, pour the concrete footings.
6. Allow the concrete footings to cure for a minimum of three days before assembling the crossbars to the uprights.



7. The crossbar is assembled between the uprights with two tee castings, one 1/2" x 3-1/2" lg. hex head cap screw, one 1/2" x 5" lg. hex head cap screw, two 1/2" lock washers, and two 1/2" hex nuts at each connection. The TOP of the crossbar must be located exactly 10'-0" above the playing surface. After the crossbar is properly located, securely tighten the hardware at both ends. See Detail "C".
8. Installation of the football goal posts is now complete.



 **WARNING:** This product can expose you to Titanium Dioxide, which is known to the State of California to cause cancer. For more information go to www.p65warnings.ca.gov.

porter[®]

Porter Athletic, Inc.

601 Mercury Drive, Champaign, IL U.S.A., 61822

Toll Free: (888) 277-7778 • Fax: (217) 239-2255

www.porterathletic.com

SAVE THESE INSTRUCTIONS FOR FUTURE USE