



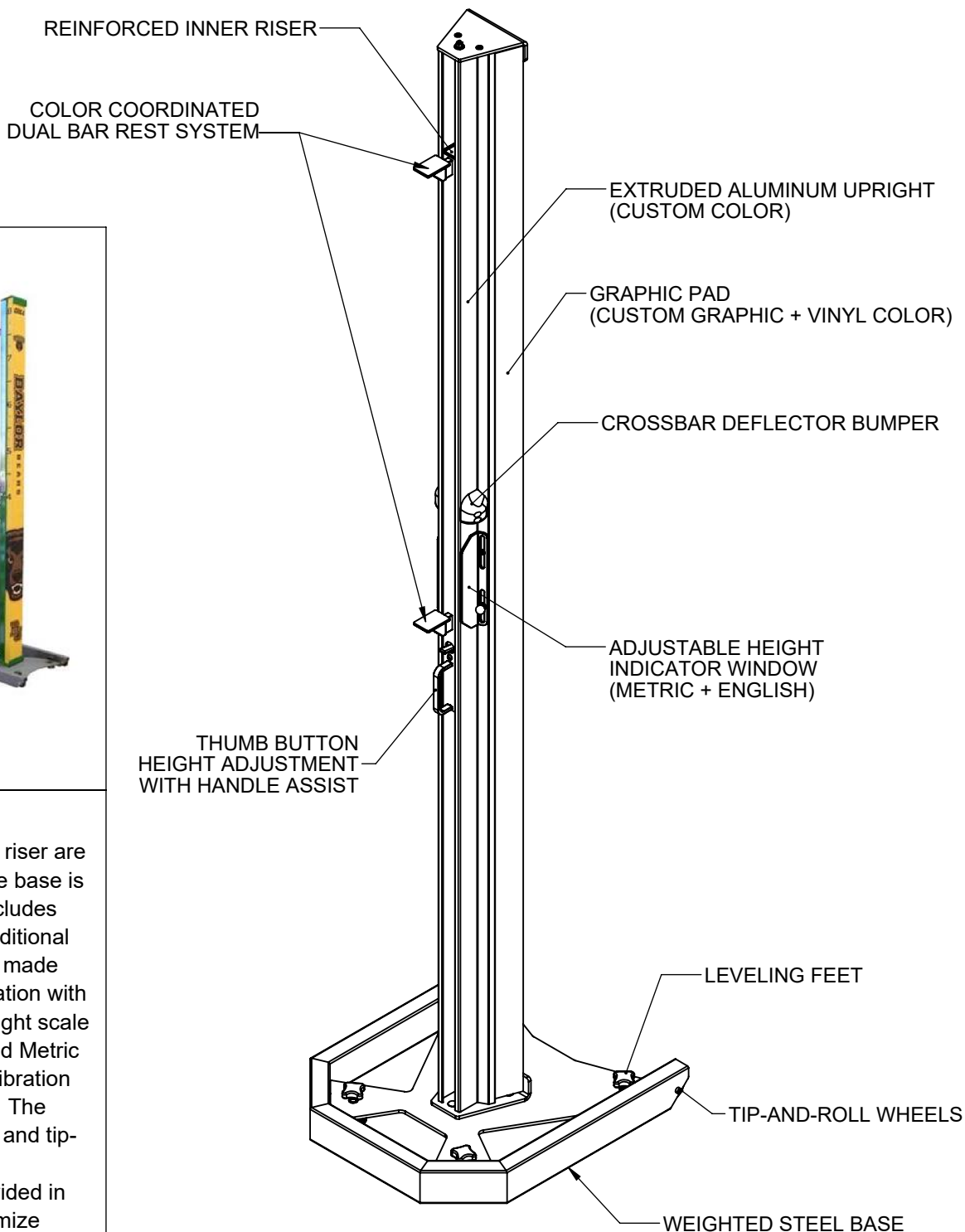
www.gillathletics.com
800-637-3090

740120CXXYYSP - AGX M4 HIGH JUMP STANDARDS SPECIFICATIONS



Specifications:

This standard's upright and riser are made of aluminum while the base is made of steel. The base includes welded steel weights for additional stability. Height adjustment made through thumb button operation with a range from 1' to 8'-3". Height scale is shown in both English and Metric measurements for easy calibration with the adjustable window. The base has four leveling feet, and tip-and-roll wheels for easy transportation. Upright provided in custom paint colors. Customize exclusive 2" safety pad with choice of color and graphics.





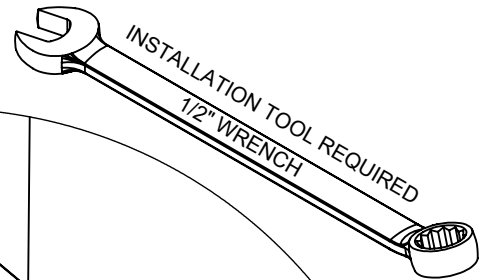
www.gillathletics.com
800-637-3090

740120CXXYYSP - AGX M4 HIGH JUMP STANDARDS CUSTOMER INSTRUCTIONS

1) Unpack boxes and confirm all items have been included. Upright and base will come pre-assembled.

2) Attach the upright to the base from the underside with 3 bolts as shown below:

REPL00050
(UPRIGHT TO BASE HARDWARE
REPLACEMENT KIT)



PART #	DESCRIPTION	QTY.
REPL00050	CARRIAGE BOLT; 5/16"-18 X 1"; ZINC; GRADE 5	3
	FLAT WASHER; 5/16"; ZINC; USS	3
	NYLOCK NUT; 5/16"-18; ZINC; THIN	3



www.gillathletics.com
800-637-3090

740120CXXYYSP - AGX M4 HIGH JUMP STANDARDS CUSTOMER INSTRUCTIONS

OPERATION

To adjust the height of the riser, press the thumb button while holding the handle.

CALIBRATION

- 1) Move standards to desired position in front of high jump pit.
- 2) Once in place, use a small level and check for correctness, if bases are not level, adjust leveling feet accordingly.
- 3) Set standards to same height on both sides (i.e. 2m).
- 4) Place cross bar on pegs, using a small level, check if center of cross bar is level. If the bar is not level, adjust one or both standards.
- 5) With a measuring device, check the accuracy of the height. Small adjustments can be made by changing the position of height indicator window.

WARNING

- Check the entire system before each use for instability.
- Do not climb, stand, or play on this unit.
- Use extreme caution when moving or adjusting this unit.
- Check the entire system at least twice a year for excessive wear, corrosion, or signs of fatigue, and tighten all nuts and bolts.
- Replace damaged or fatigued structural components and missing hardware immediately to prevent structural failure and possible injuries.
- Always instruct athletes of safe behavior, and potential dangers associated with high jump standards and landing systems.
- Always use base padding with this system.

THE OWNER OF THIS EQUIPMENT IS RESPONSIBLE TO ENSURE THAT ALL INDIVIDUALS FOLLOW THESE SAFETY AND OPERATING INSTRUCTIONS TO AVOID INJURIES OR PROPERTY DAMAGE. PROPER USE AND SUPERVISION OF THIS EQUIPMENT IS ESSENTIAL TO HELP REDUCE THE POSSIBILITY OF ACCIDENTS OR INJURIES.

⚠ WARNING: This product can expose you to Titanium Dioxide, which is known to the State of California to cause cancer. For more information go to www.p65warnings.ca.gov.



www.gillathletics.com
800-637-3090

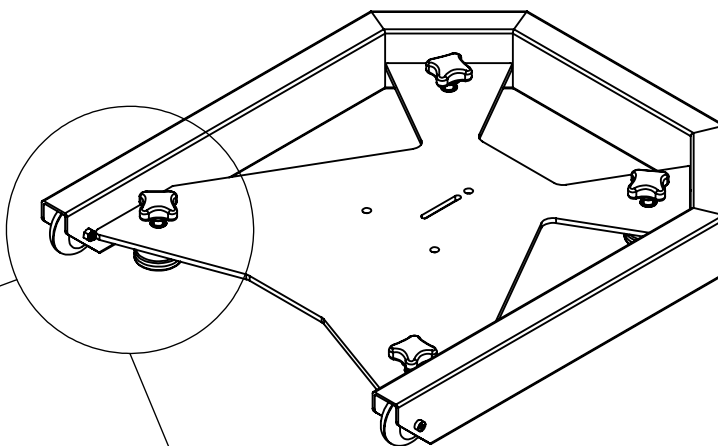
740120CXXYYSP - AGX M4 HIGH JUMP STANDARDS REPLACEMENT PARTS

REPLACEMENT PARTS

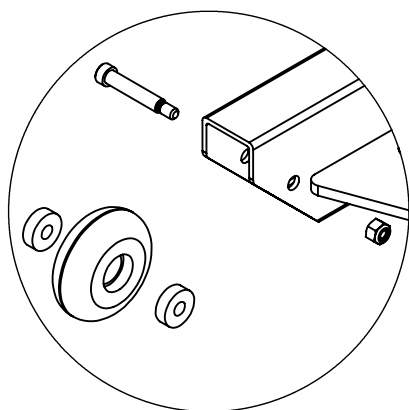
REPL74012040 SINGLE REPLACEMENT HJ RISER



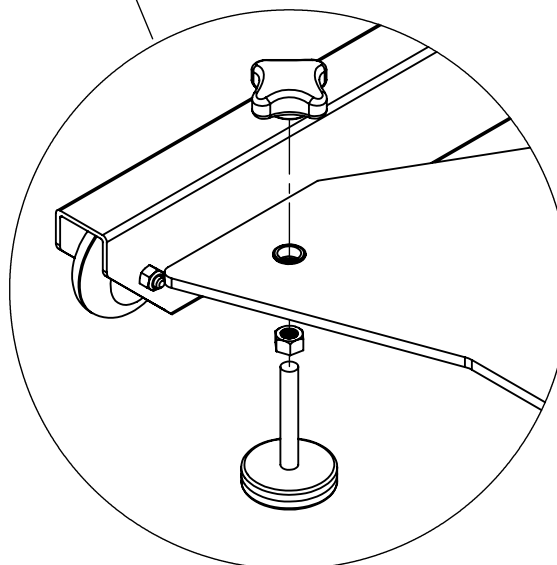
BASE00131



REPL00045 (WHEEL REPLACEMENT KIT)



REPL00051 (LEVELING FOOT REPLACEMENT KIT)



PART #	DESCRIPTION	QTY.
REPL00045	SHOULDER BOLT; 1/4"-20 X 5/16"	1
	NYLOCK NUT; 1/4"-20; SS	1
	WHEEL 64MM SKATE	1
	BEARING ABEC 1 608ZZ	2
REPL00051	FOUR-ARM KNOB; 3/8-16 INSERT	1
	LEVELING GLIDE 3/8 X 2 PLATED	1
	HEX NUT; 3/8"-16; ZINC	1

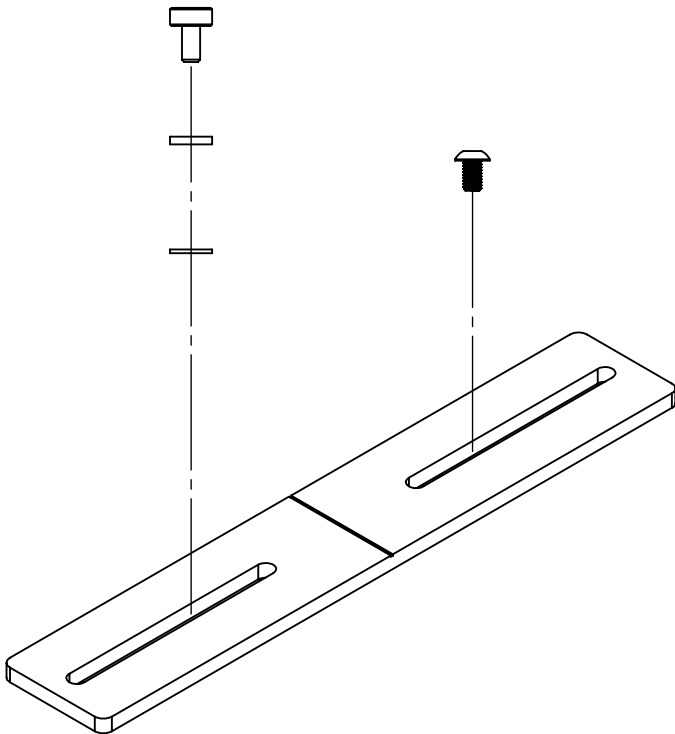


www.gillathletics.com
800-637-3090

740120CXXYYSP - AGX M4 HIGH JUMP STANDARDS REPLACEMENT PARTS

REPLACEMENT WINDOW PARTS

OLD STYLE
REPL74012001



NEW STYLE
REPL00052

