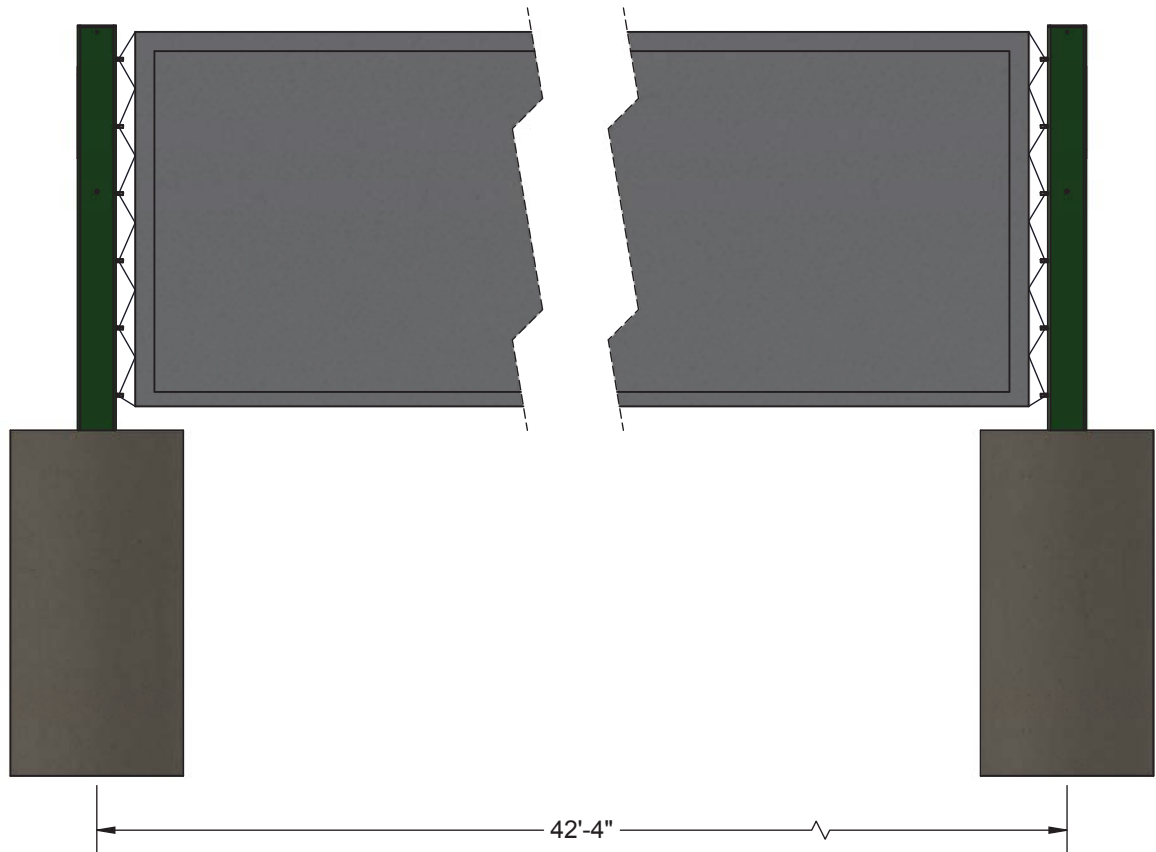




www.gillathletics.com
800-637-3090

885 - ELITE TENNIS POSTS ASSEMBLY INSTRUCTIONS

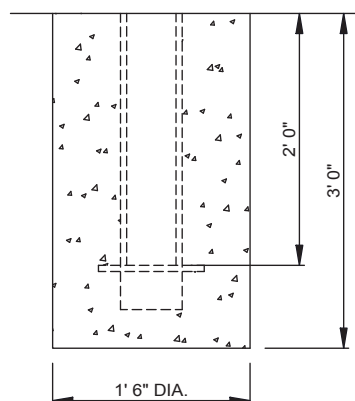


CAUTION - contact your local utility companies to locate buried electrical, gas, and water lines before digging holes for footings.

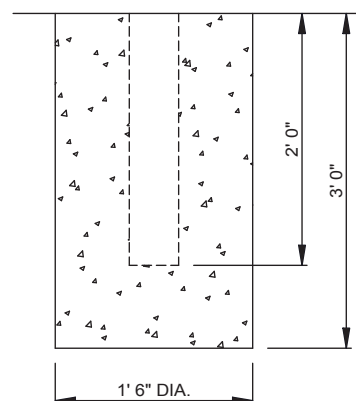
Locate and dig footings for each ground sleeve. The footer size is to be determined by the architect/engineer and is based on local codes and soil conditions. Confirm all locations and dimensions before setting. Sleeve depth will depend on court surface thickness. Add a gravel base as needed for proper drainage.

Fill with concrete, sloping the top for proper drainage. Allow concrete to set a MINIMUM of 24 hours before proceeding.

OPTIONAL SLEEVE



CAST IN-PLACE



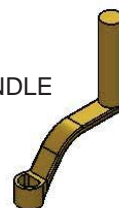


www.gillathletics.com
800-637-3090

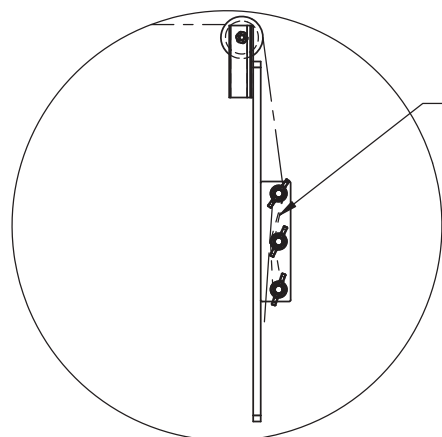
885 - ELITE TENNIS POSTS ASSEMBLY INSTRUCTIONS

REPLACEMENT PARTS

REPL884A - CRANK HANDLE



ROPE00084 - NET CLIP

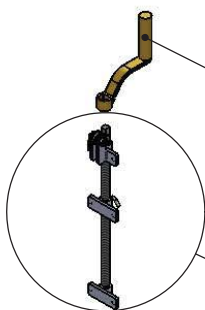
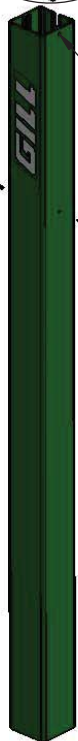


Attach other end of
net between clamp
plates



HDWE090100E0

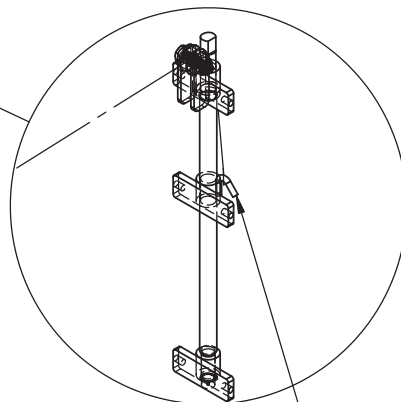
HDWE090440E0



Tighten net
with handle

HDWE090100E0

HDWE090440E0



Attach net to
internal hook

WARNING: This product can expose you to Titanium Dioxide, which is known to the State of California to cause cancer. For more information go to www.p65warnings.ca.gov.

E

WARNING

- READ ALL CAUTIONS AND WARNINGS THOROUGHLY BEFORE USING THIS EQUIPMENT.
- READ ALL INSTRUCTIONS THOROUGHLY BEFORE ATTEMPTING TO ASSEMBLE THIS EQUIPMENT. ASSEMBLY OF THIS EQUIPMENT MUST BE DONE BY PHYSICALLY CAPABLE ADULTS ONLY.
- FAILURE TO COMPLY WITH THE INSTRUCTIONS, MAINTENANCE, AND WARNINGS MAY RESULT IN SERIOUS INJURIES AND/OR PROPERTY DAMAGE.
- WHILE IT CANNOT BE ELIMINATED, THE RISK OF INJURIES CAN BE GREATLY REDUCED BY FOLLOWING PROPER SAFETY GUIDELINES AND PROVIDING PROPER MAINTENANCE AND SAFETY INSPECTIONS.
- STRICT SAFETY PRECAUTIONS AND ADULT SUPERVISION MUST BE OBSERVED AT ALL TIMES TO MINIMIZE THE POSSIBILITY OF ACCIDENTAL INJURIES.
- THE OWNER OF THIS EQUIPMENT IS RESPONSIBLE TO ENSURE THAT ALL INDIVIDUALS FOLLOW THESE SAFETY AND OPERATING INSTRUCTIONS TO AVOID INJURIES OR PROPERTY DAMAGE. PROPER USE AND SUPERVISION OF THIS EQUIPMENT IS ESSENTIAL TO HELP REDUCE THE POSSIBILITY OF ACCIDENTS OR INJURIES.
- DO NOT SUBSTITUTE ANY PARTS FOR THE FACTORY SUPPLIED HARDWARE.
- DO NOT ALLOW ANY INDIVIDUALS TO CLIMB POSTS OR NETS.
- USE EXTREME CAUTION WHEN WALKING AROUND THE SYSTEM.
- THIS WARNING IS GIVEN IN COMPLIANCE WITH CALIFORNIA'S PROPOSITION 65: WARNING THIS PRODUCT CONTAINS CHEMICALS KNOWN TO THE STATE OF CALIFORNIA TO CAUSE CANCER, BIRTH DEFECTS OR OTHER REPRODUCTIVE HARM.

GENERAL MAINTENANCE

- INSPECT THIS EQUIPMENT FOR WEAR, LOOSE FITTINGS, DAMAGE AND PROPER STABILITY BEFORE EACH USE. REPLACE DEFECTIVE OR WORN PARTS IMMEDIATELY. IF IN DOUBT, DO NOT USE THIS EQUIPMENT UNTIL REPAIRED.
- THE SYSTEM SHOULD BE DISMANTLED AND STORED WHEN NOT BEING USED. STORE IN A CLEAN DRY AREA.
- PERIODICALLY CHECK AND RE-TENSION THE NET AND ANY SCREWS.
- INSPECT NETTING BEFORE EACH USE. IF NETTING IS WORN OR DAMAGED, STOP USING IT UNTIL IT IS REPLACED OR REPAIRED.
- REGULARLY CHECK THE ENTIRE STRUCTURE FOR SIGNS OF CORROSION AND REPAINT WITH AN EXTERIOR GRADE, RUST-RESISTANT ENAMEL.