



www.gillathletics.com
800-637-3090

COLLEGIATE POLE VAULT STANDARD INSTALLATION INSTRUCTIONS

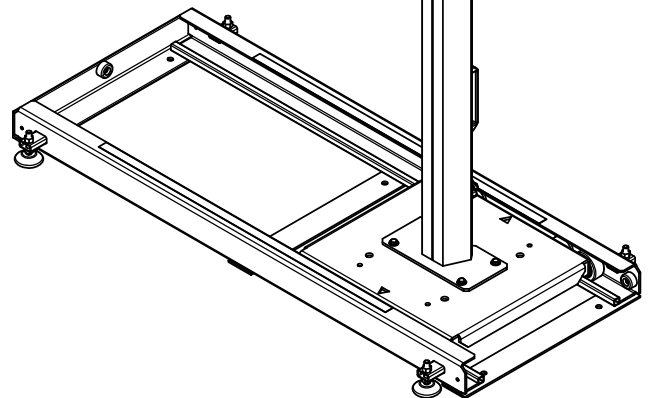
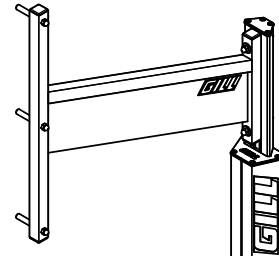
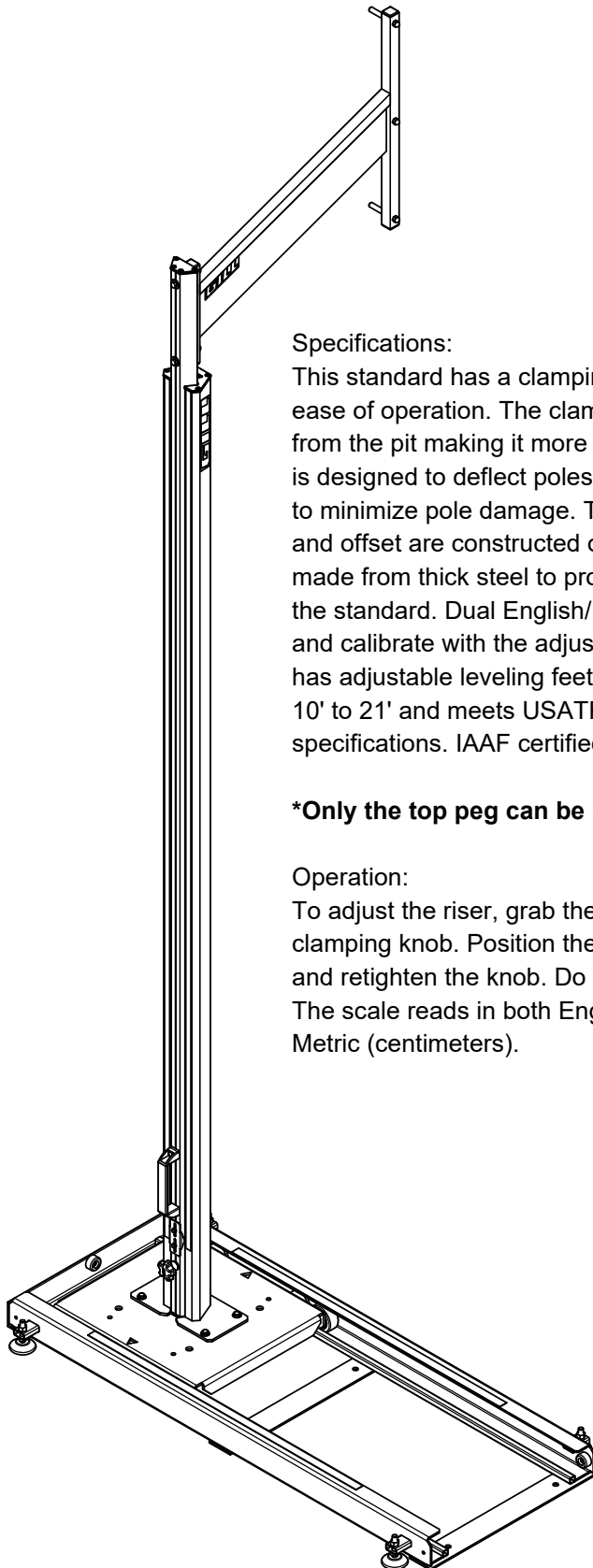
Specifications:

This standard has a clamping system and a handle for ease of operation. The clamping knob is facing away from the pit making it more "official friendly". The handle is designed to deflect poles away from the clamping knob to minimize pole damage. This standard's upright, riser, and offset are constructed of aluminum while the base is made from thick steel to provide a sturdy foundation for the standard. Dual English/ Metric scale is easy to read and calibrate with the adjustable height readout. Base has adjustable leveling feet. This standard reaches from 10' to 21' and meets USATF, NCAA, and High School specifications. IAAF certified*.

***Only the top peg can be used for IAAF competitions**

Operation:

To adjust the riser, grab the handle and loosen the clamping knob. Position the riser at the desired height and retighten the knob. Do not lift the riser by the knob. The scale reads in both English (feet and inches) and Metric (centimeters).

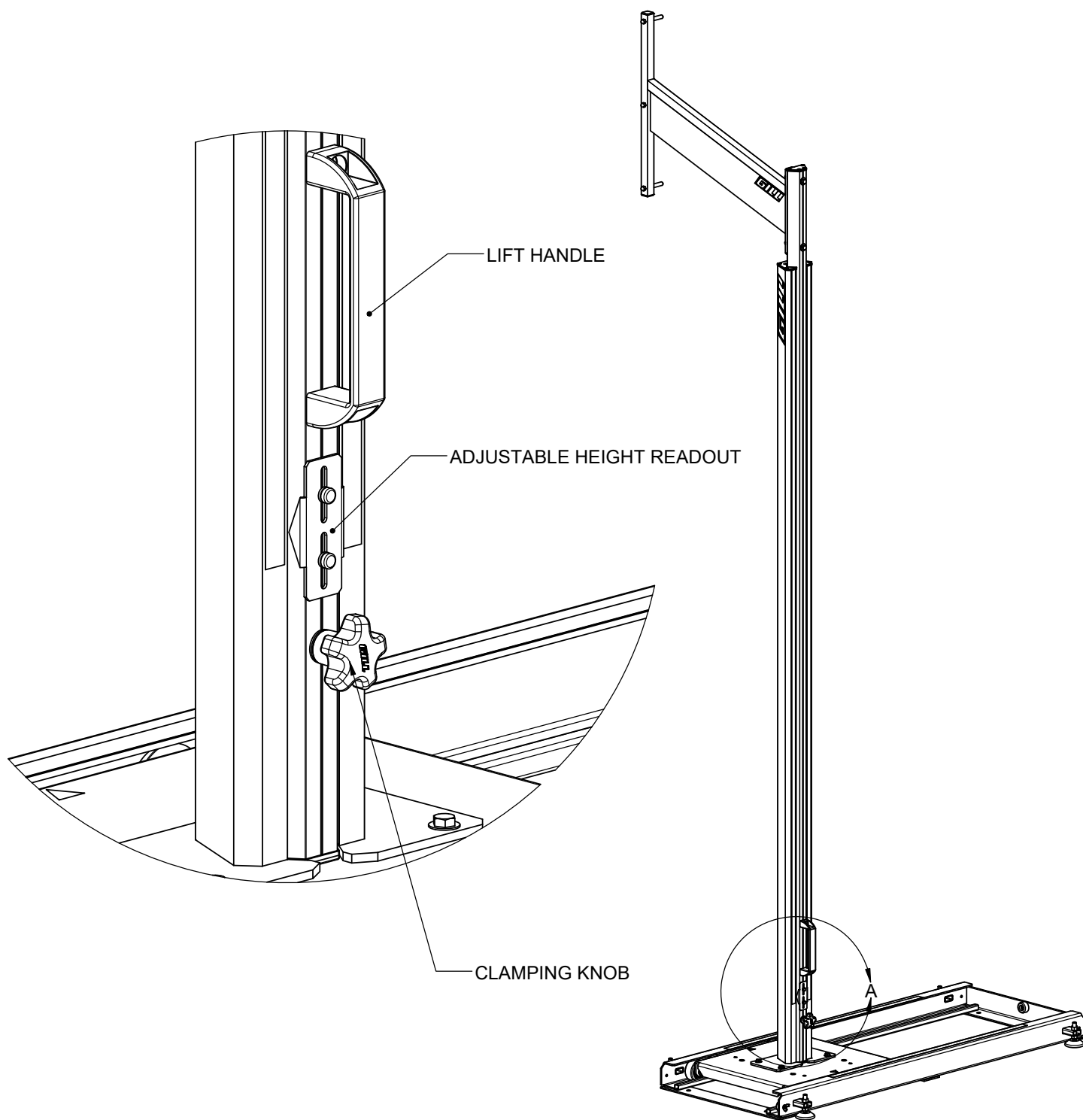


▲ WARNING: This product can expose you to Titanium Dioxide, which is known to the State of California to cause cancer. For more information go to www.p65warnings.ca.gov.



www.gillathletics.com
800-637-3090

COLLEGIATE POLE VAULT STANDARD INSTALLATION INSTRUCTIONS

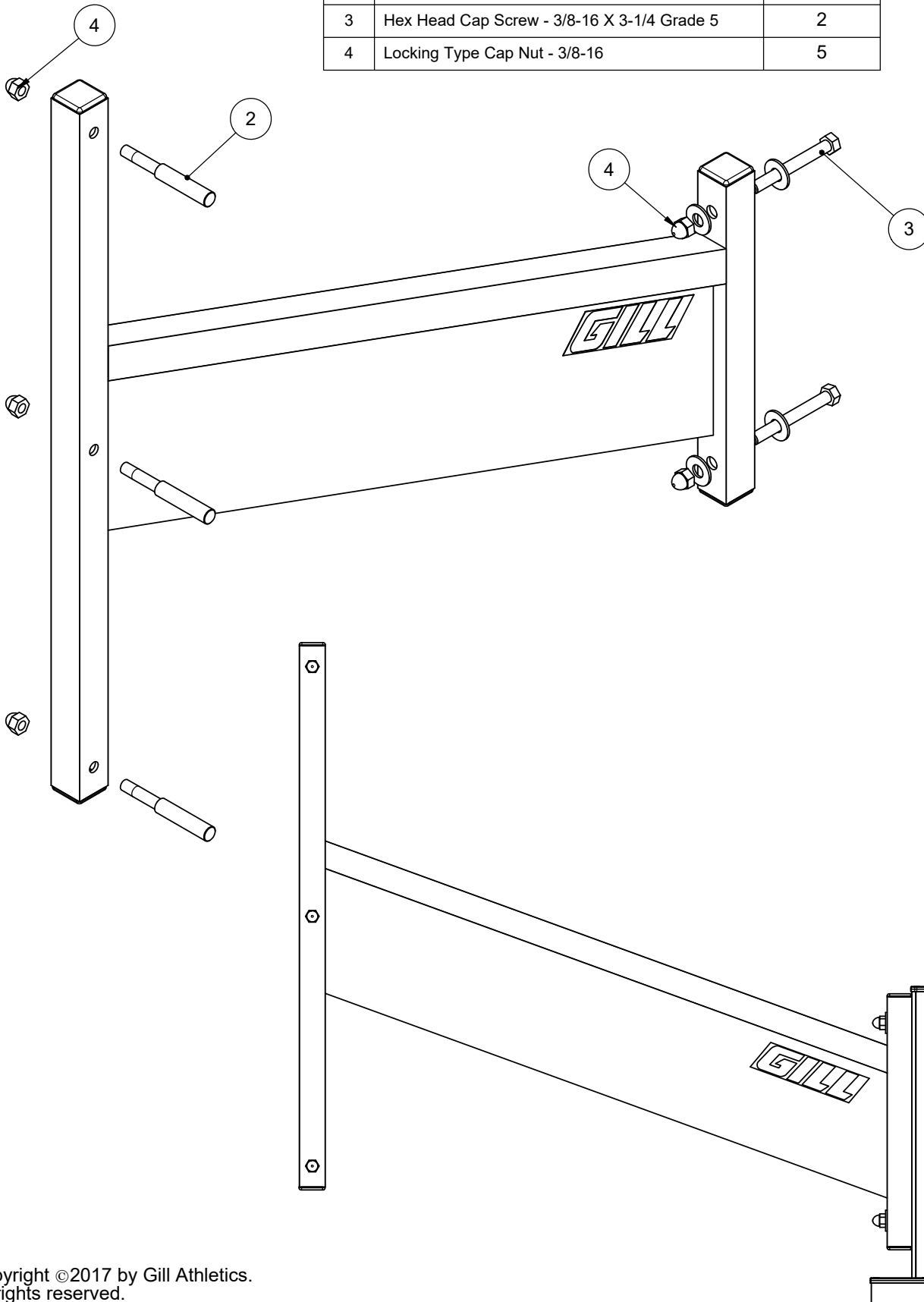




www.gillathletics.com
800-637-3090

COLLEGIATE POLE VAULT STANDARD INSTALLATION INSTRUCTIONS

#	Description	QTY.
1	Offset weldment	1
2	55mm bar rest pin	3
3	Hex Head Cap Screw - 3/8-16 X 3-1/4 Grade 5	2
4	Locking Type Cap Nut - 3/8-16	5

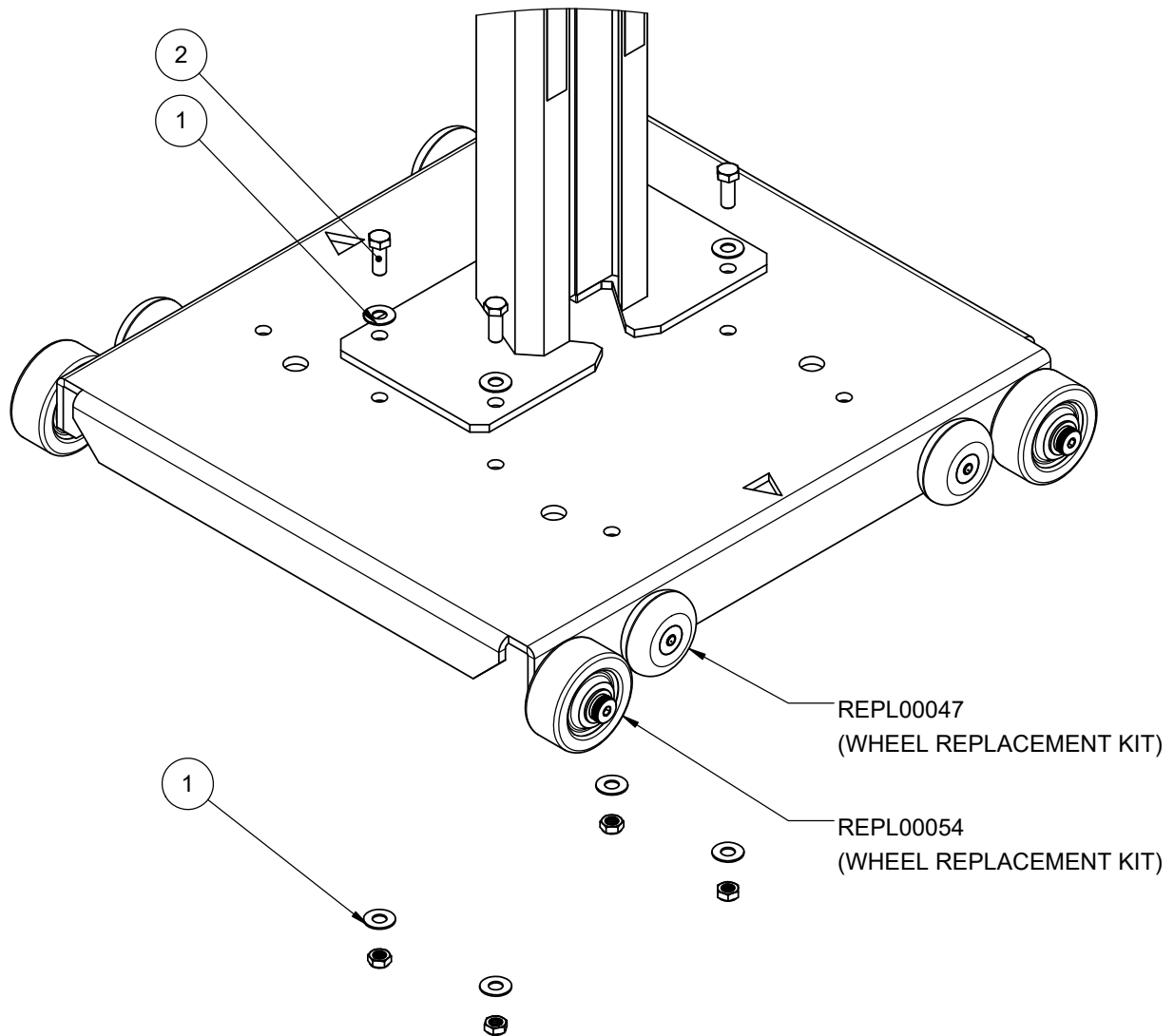




www.gillathletics.com
800-637-3090

COLLEGIATE POLE VAULT STANDARD INSTALLATION INSTRUCTIONS

Part #	Description	QTY.
REPL00047	HEX HEAD CAP SCREW; 5/16"-18 X 1-3/4"	1
	WHEEL 64MM SKATE	1
	NYLOCK NUT; 5/16"-18; THIN	1
	BEARING ABEC 1 608ZZ	1
	FLAT WASHER; 5/16"; ZINC; USS	1

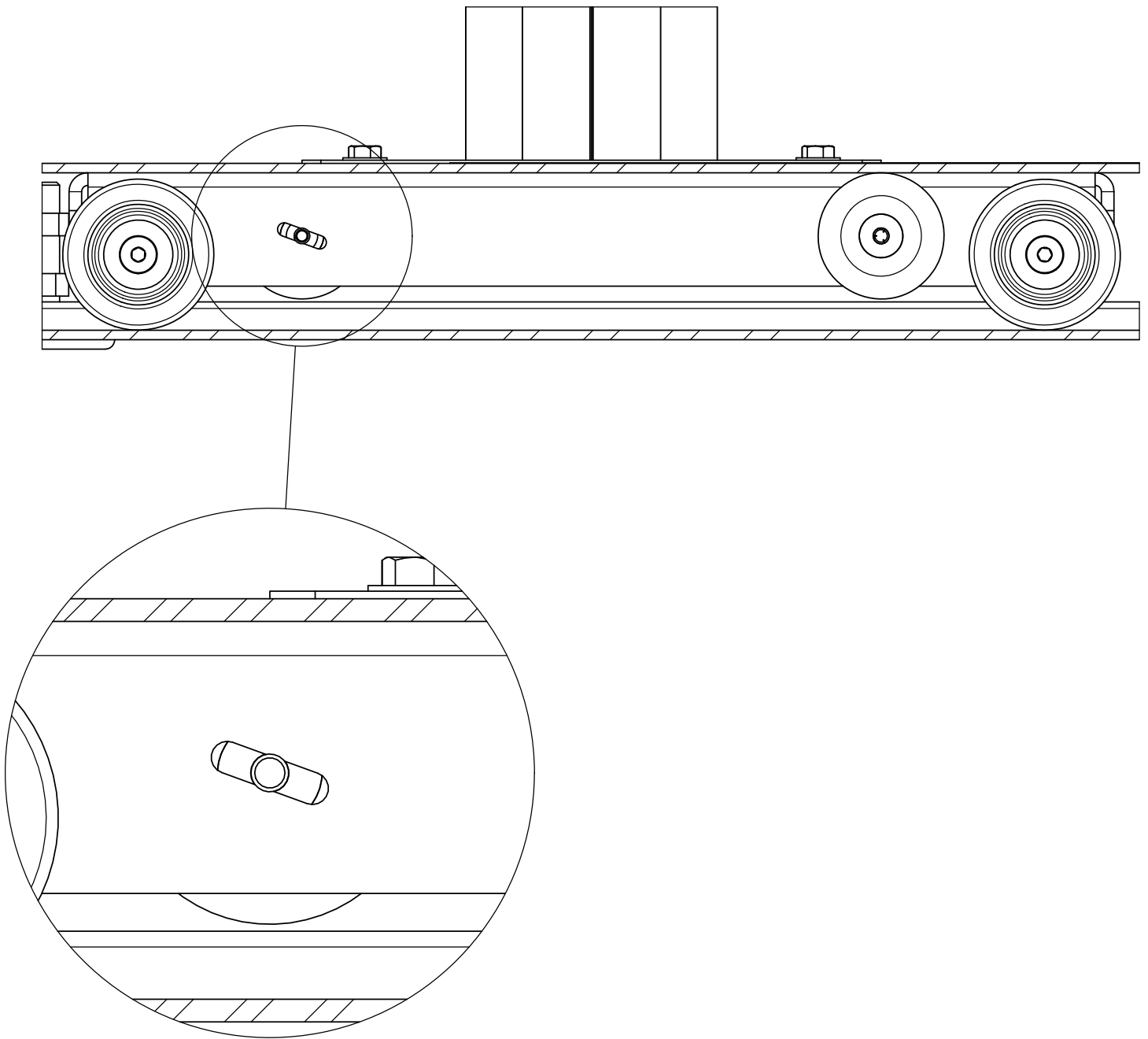


#	Part #	Description	QTY.
1	REPL00056	Washer, Flat, 3/8" SAE, .875" OD, .4" ID	8
2		3/18"-16 x 1 3/4" Stainless Steel Hex Bolt	4
3		3/8"-16 Nylock hex nut	4
	REPL00054	SHOULDER BOLT; 1/4"-20 X 5/16" DIA	1
		NYLOCK NUT; 3/8"-16; THIN	1
		3" X 1.25" PHENOLIC WHEEL 1/2" AXLE W/ ROLLER BEARINGS	1
		FLAT WASHER; 33/64" ID X 1" OD X .030" THICK; STEEL	2



www.gillathletics.com
800-637-3090

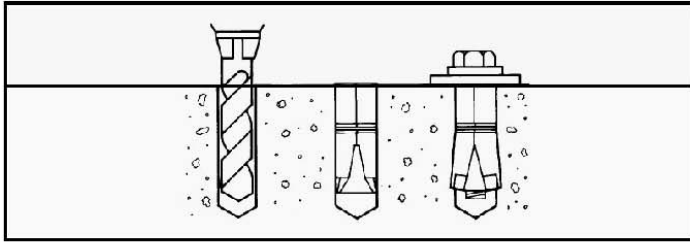
COLLEGIATE POLE VAULT STANDARD INSTALLATION INSTRUCTIONS





www.gillathletics.com
800-637-3090

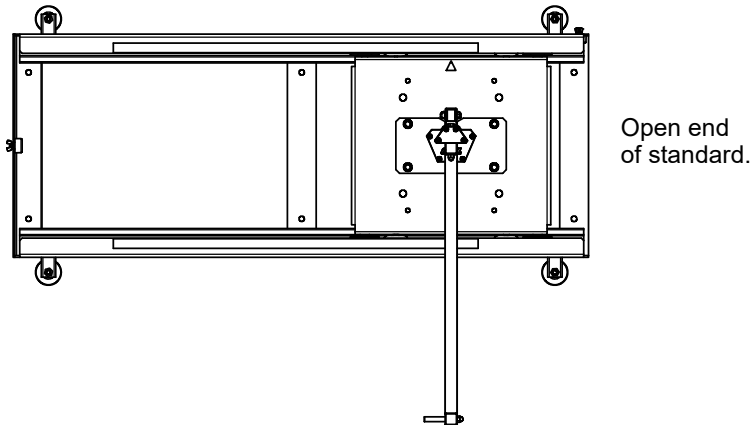
COLLEGIATE POLE VAULT STANDARD INSTALLATION INSTRUCTIONS



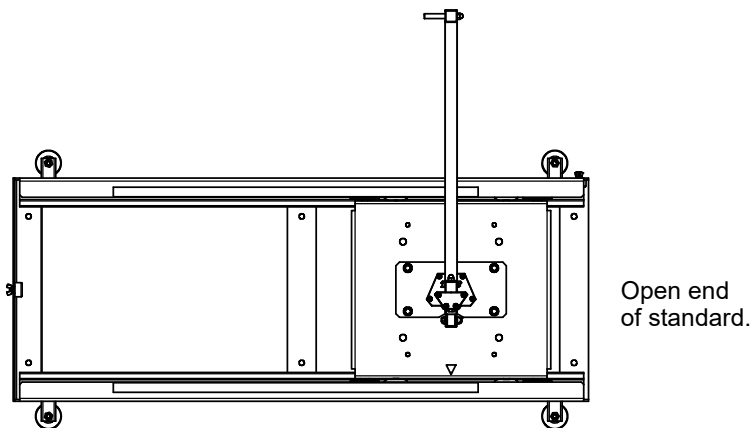
Instructional information from www.mktfastening.com.

Tools Required:

- (1) Drill
- (1) 7/8" Masonry Bit
- (1) Hammer
- (1) 3/4" Wrench or Socket



1. Proper alignment of standards is critical before drilling anchor holes. See the next page for more information. After standards have been properly positioned, mark the hole placement.
2. Drill recommended diameter hole to depth of shield.
3. Clean hole of debris.
4. Insert shield in hole threaded end first and tap with hammer for proper positioning.
5. Place base rail back over holes.
6. Insert included 1/2"-13 bolt and 1/2" washer through rails into shield and tighten.

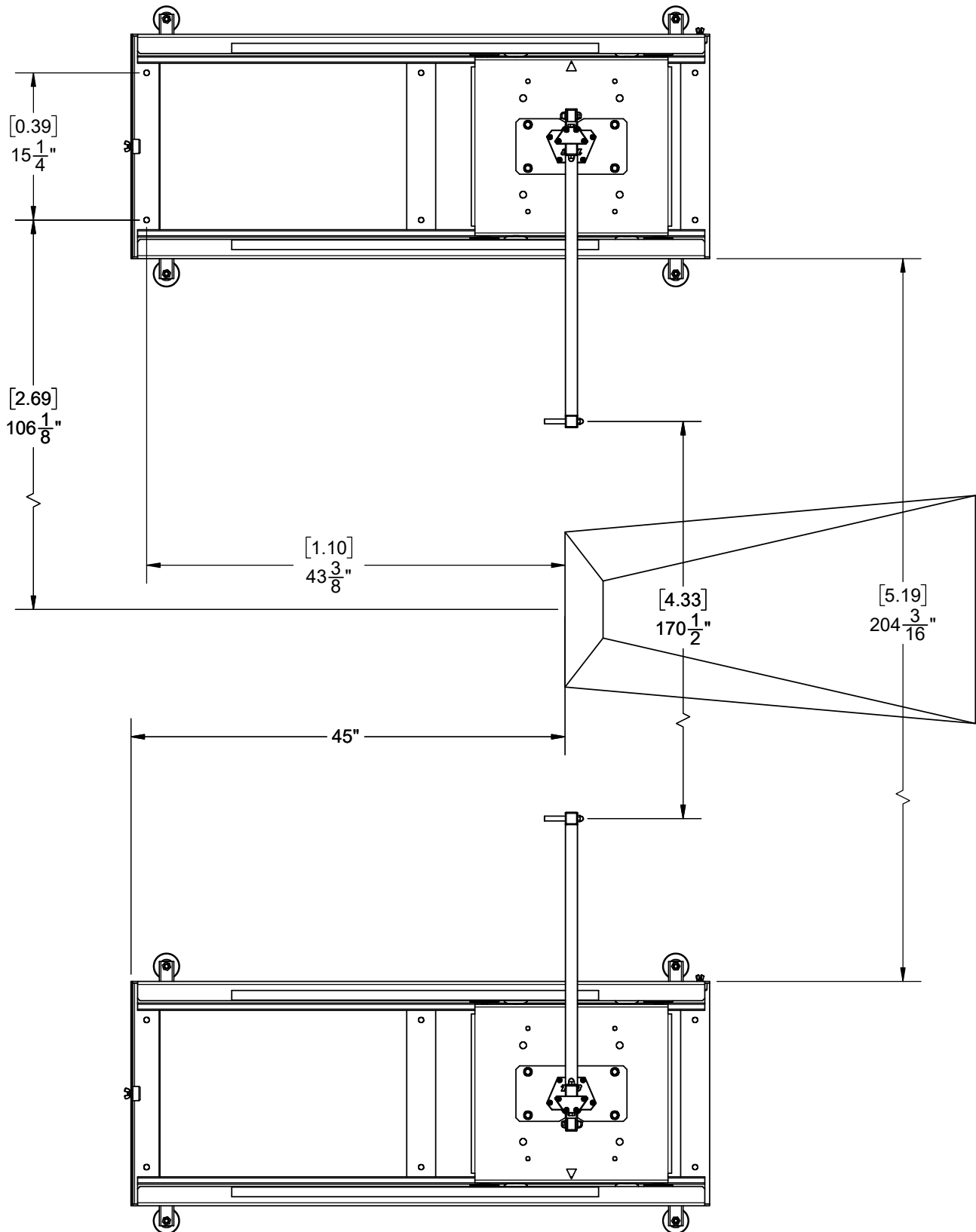


THIS WARNING IS GIVEN IN COMPLIANCE
WITH CALIFORNIA'S PROPOSITION 65:
WARNING
This product contains chemicals known to the
State of California to cause cancer, birth defects
or other reproductive harm.



www.gillathletics.com
800-637-3090

COLLEGIATE POLE VAULT STANDARD INSTALLATION INSTRUCTIONS



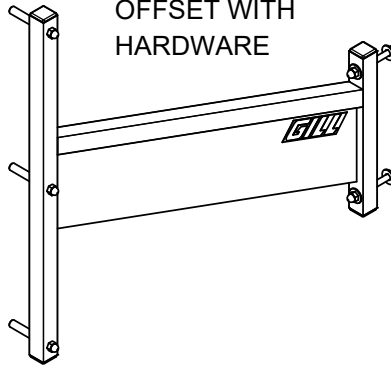


www.gillathletics.com
800-637-3090

COLLEGIATE POLE VAULT STANDARD INSTALLATION INSTRUCTIONS

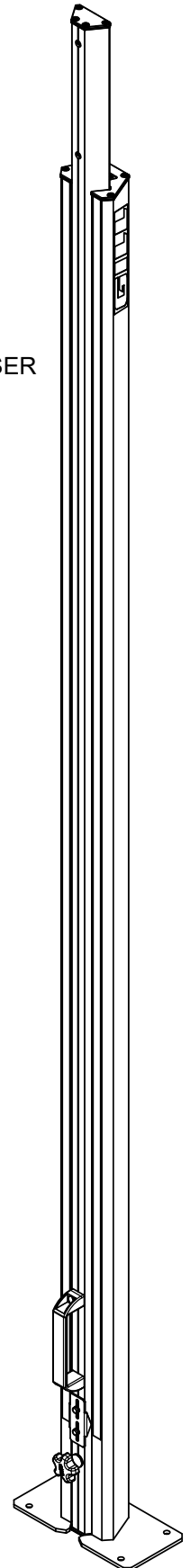
77230

OFFSET WITH
HARDWARE

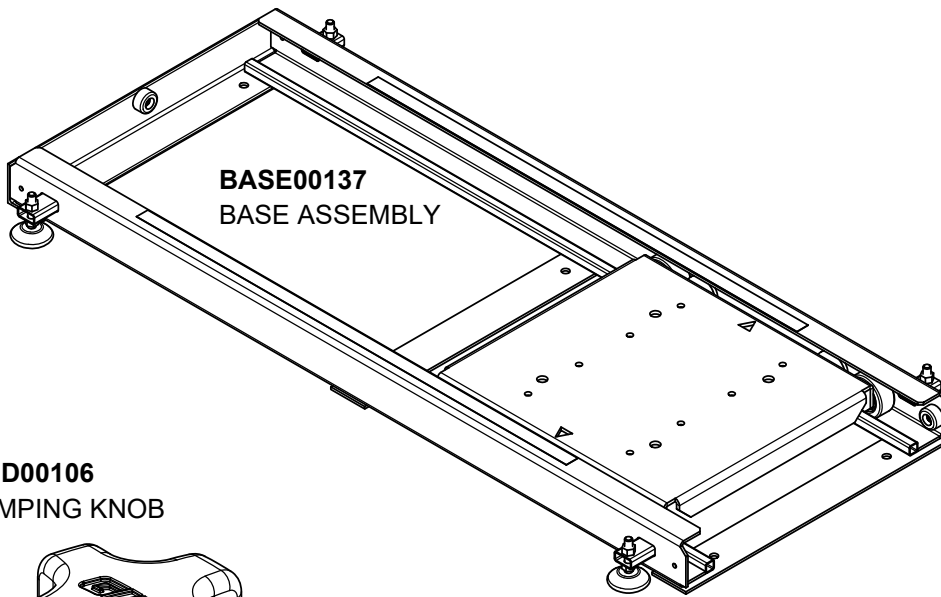


77250

UPRIGHT/ RISER
ASSEMBLY

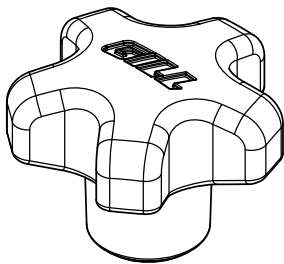


BASE00137
BASE ASSEMBLY



HAND00106

CLAMPING KNOB



Part #	Description	QTY.
REPL00055	COLLEGIAT BASE LEVELING FOOT WITH 3" THREAD	1
	HEX NUT; 1/2"-13; ZINC	1