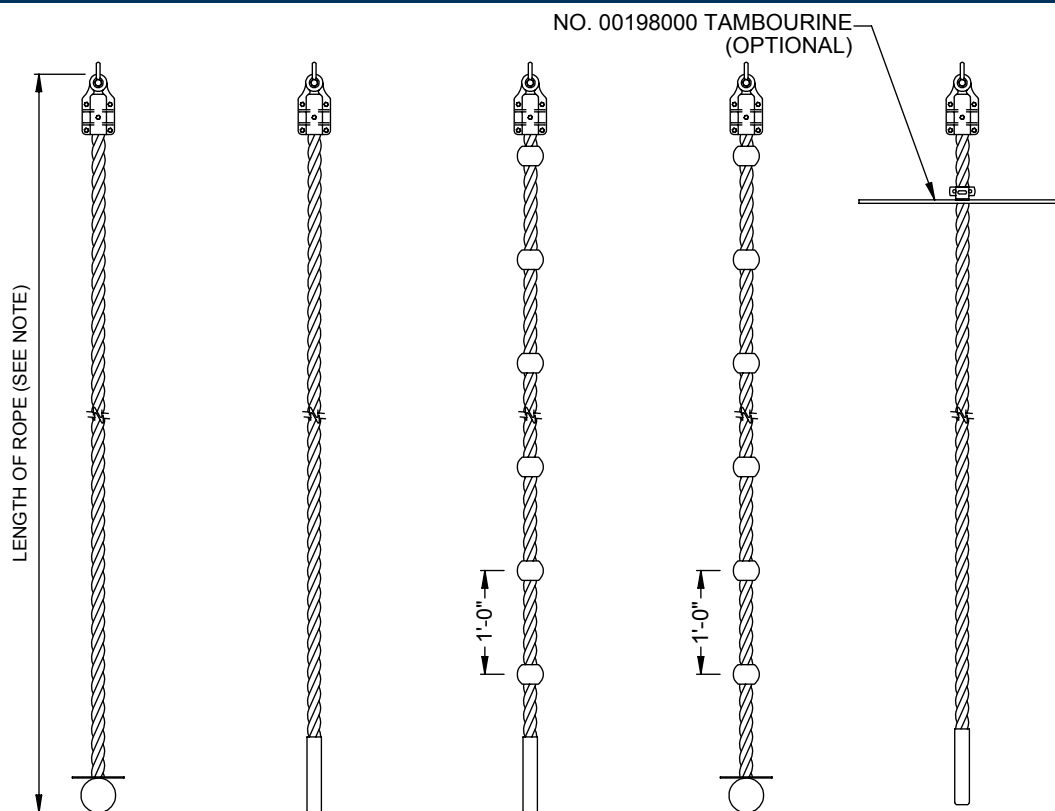


001XXXX0 - CLIMBING ROPES



00113XXX
KNOTTED END HEMP

00118XXX
VINYL BOOT END DACRON

00119XXX
BALL/BOOT DACRON

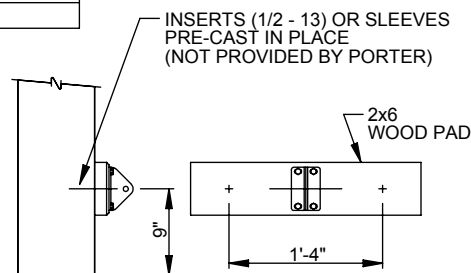
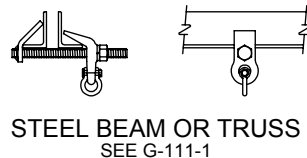
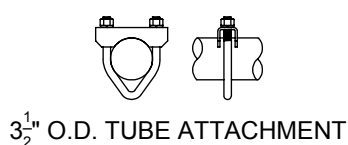
00115XXX
BALL/KNOTTED HEMP

00199XXX
VINYL BOOT END
COLLEGIATE
(CUSTOM LENGTH)

NOTE: ROPES ARE FURNISHED IN FOUR STANDARD LENGTHS - 12', 16', 20', AND 24'. A 5'-0" LENGTH OF CHAIN IS FURNISHED TO POSITION BOTTOM OF ROPE AT DESIRED HEIGHT. SPECIFY 'XX' DIGITS OF ITEM NUMBER AS FOLLOWS:

ROPE LENGTH	REPLACE 'XX' WITH
12'	12
16'	16
20'	20
24'	24

ATTACHMENT METHODS



WARNING
PROVIDE ADEQUATE PROTECTIVE FLOOR MATS
UNDER CLIMBING ROPE LOCATIONS WHEN IN USE

WOOD OR CONCRETE BEAM
NOTE: WOOD PAD NOT USED ON WOOD BEAM

- _____ - 001XXXXX
- _____ - KNOTTED END HEMP (00113XX0)
 - _____ - BALL/KNOTTED HEMP (00115XX0)
 - _____ - VINYL BOOT END DACRON (00118XX0)
 - _____ - BALL/BOOT DACRON (00119XX0)
 - _____ - VINYL BOOT END COLLEGIATE (SPECIFY LENGTH) (001990XX)
 - _____ - SAFETY GUARD (00110000)
 - _____ - TAMBOURINE (00198000)

001XXXX0 - CLIMBING ROPES

SPECIFICATIONS

PORTER No. 00113XXX HEMP ROPE WITH KNOTTED END

Climbing rope shall be made of 1-1/2" top grade 3-strand hemp rope. Top end shall be securely clamped in a cast, ductile iron fitting. Bottom end to have turk's head knot stitched in and protected against unraveling by heavy leather cover.

PORTER No. 00115XXX "KNOTTED" HEMP ROPE

Climbing rope shall be made of 1-1/2" top grade 3-strand hemp rope. Top end shall be securely clamped in a cast, ductile iron fitting. Bottom end to have turk's head knot stitched in and protected against unraveling by a heavy leather cover. Intermediate rubber knots shall be 3" diameter, secured on rope on 12" centers.

PORTER No. 00118XXX SOFT RIBBON-POLY ROPE

Climbing rope shall be made of soft, synthetic fiber ribbon-poly rope. Top end shall be securely clamped in a cast, ductile iron fitting. Bottom end to be fitted with a 9" long heat-shrink type PVC tubing which is coated with a heavy vinyl coating after assembly for maximum durability.

PORTER No. 00119XXX "KNOTTED" SOFT-POLY ROPE

Climbing rope shall be made of 1-1/2" soft, synthetic fiber ribbon-poly rope. Top end shall be securely clamped in a cast, ductile iron fitting. Bottom end to be fitted with a 9" long heat-shrink type PVC tubing which is coated with a heavy vinyl coating after assembly for maximum durability. Intermediate rubber knots shall be 3" diameter, secured on rope on 12" centers.

PORTER No. 90199XXX COLLEGIATE CLIMBING ROPE

Climbing rope shall be made of top grade 3-strand hemp rope. Top end shall be securely clamped in a cast, ductile iron fitting. Bottom end of rope to be fitted with a 9" long heat-shrink type PVC tubing which is coated with a heavy vinyl coating after assembly for maximum durability.

WARRANTY

- climbing ropes come with a 1-year limited warranty.

ACCESSORIES

- Safety Guard (No. 00110000)
- Tambourine (No. 00198000)
- Rope Hoist (No. 00104000)

LEED® SUBMITTAL INFORMATION

Credit	Measure
MRc4-Recycled Content	Post Consumer Average 0% Post Industrial 0%
MRc5-Regional Materials	Raw materials originate from multiple sources so origin point cannot be determined. Final Manufacturing/Assembly in Champaign, IL 61822