



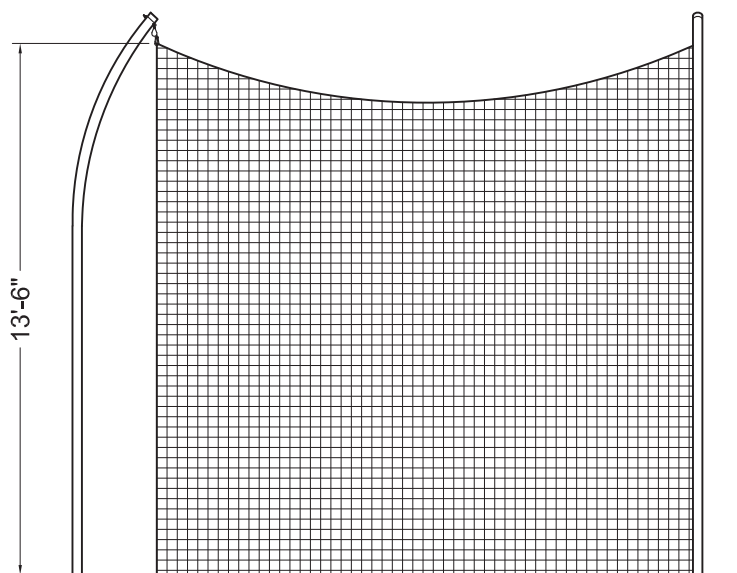
Technical drawing showing a circular structure with dimensions and a perspective view.

**Top View Dimensions:**

- Overall width: 14'
- Overall height: 10'
- Inner circle diameter: 6'
- Outer circle diameter: 2'-6"
- Radius of the outer circle: 14'

**Perspective View:**

- Angle: 34.9°



Copyright ©2017 by Gill Athletics. All rights reserved.

GILL ATH  
12-18-17  
8050\_spec

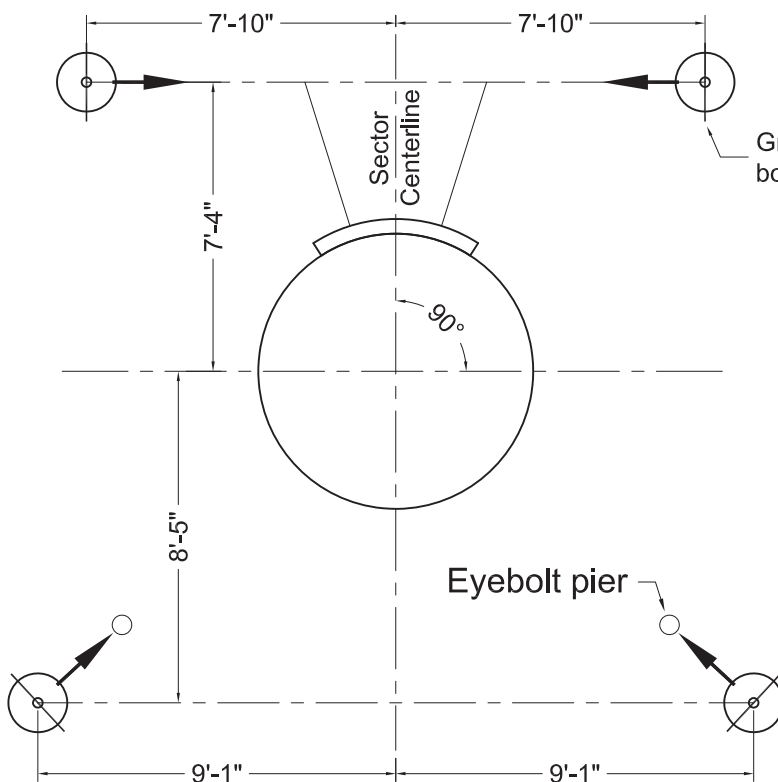


www.gillathletics.com  
800-637-3090

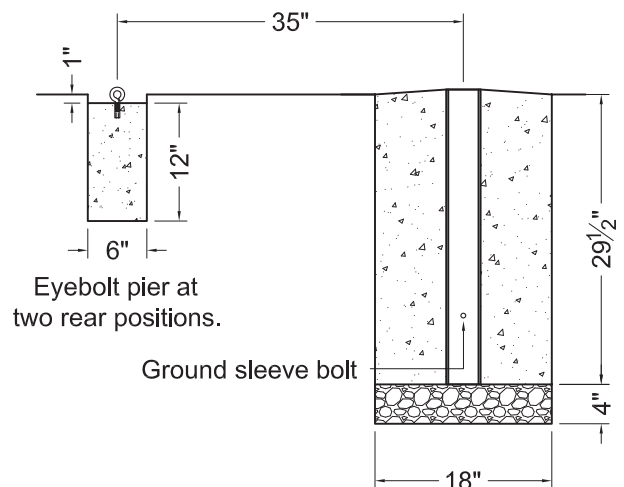
## 8050 - ALUMINUM SHOT PUT CAGE GROUND SLEEVE INSTALLATION

1. Stake out and mark with string the sector center line crossing the circle center. Stake out a second line perpendicular to the sector center line at the circle center. Measure and mark the sleeve centers for each post as shown.
2. Dig four 34" deep holes at marked locations. The minimum recommended diameter for these holes is 18". Soil conditions at your sight may require larger diameter concrete bases for each pole.
3. Place approximately 4" of rock in the bottom of each hole. The rock should support the sleeve at the proper height and allow water in the sleeve to drain away.

4. Mark the hole centers with crossed strings. Set each ground sleeve in place so the top edge is 1/2" above the surrounding ground level. Position the sleeves so the poles will face in the directions shown on the previous page. As the sleeves must remain vertical, secure them in place with wire and short sections of rebar.
5. Carefully pour cement around the ground sleeves. Check with a level to ensure sleeves have remained vertical. The concrete should slope away from the top edges of the sleeves to ground level to help keep water and debris out of the sleeves.
6. At the rear pole positions, dig 6" diameter holes 13" deep. These holes need to be positioned as shown below. Pour concrete up to 1" below ground level.
7. After the concrete has hardened, install anchor and eyebolt.



Ground sleeve  
bolt orientation



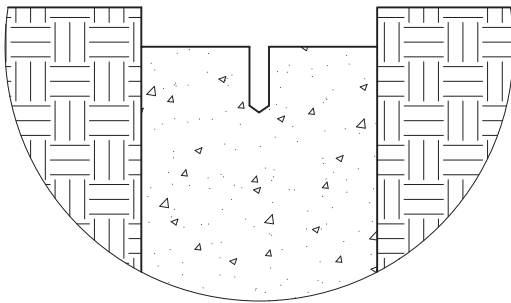
**NOTICE:** All installations should be conducted by experienced contractors and in accord with all applicable codes, laws and regulations. Suggested instructions herein are illustrative only and should be adapted to suit local requirements. Gill Athletics is not responsible for the manner in which these products are installed.



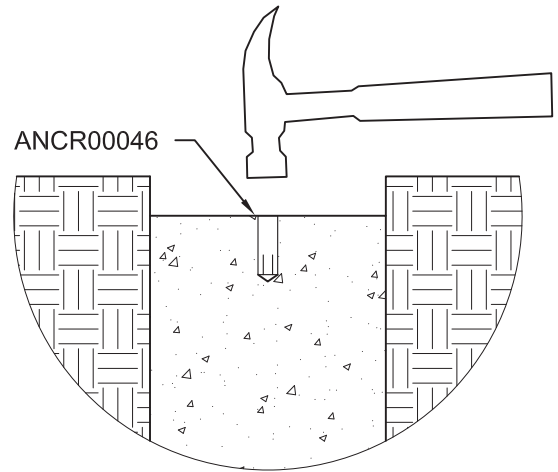
www.gillathletics.com  
800-637-3090

## DISCUS CAGE DROP IN CONCRETE ANCHOR INSTRUCTIONS

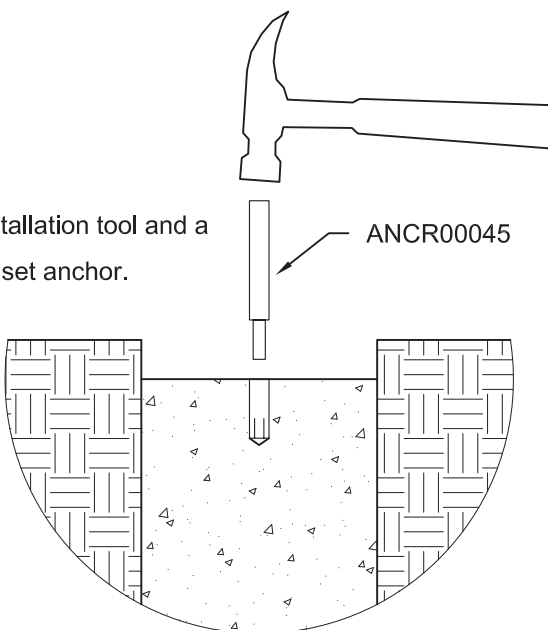
Drill a  $\frac{1}{2}$ " diameter hole,  $1\frac{1}{2}$ "  
deep in the center of the pier.  
Clean out hole with a vacuum.



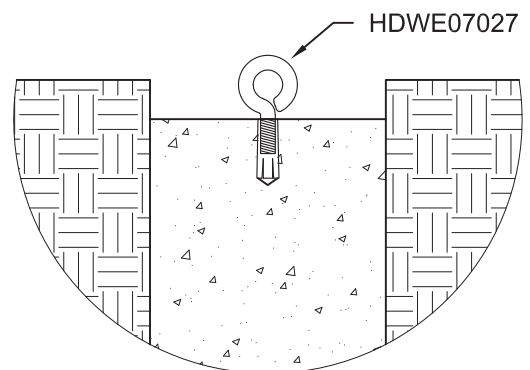
With the threaded opening pointing  
up, insert the anchor into the hole.  
Tap it down with a hammer.



Use the installation tool and a  
hammer to set anchor.



Thread the eyebolt into the anchor.

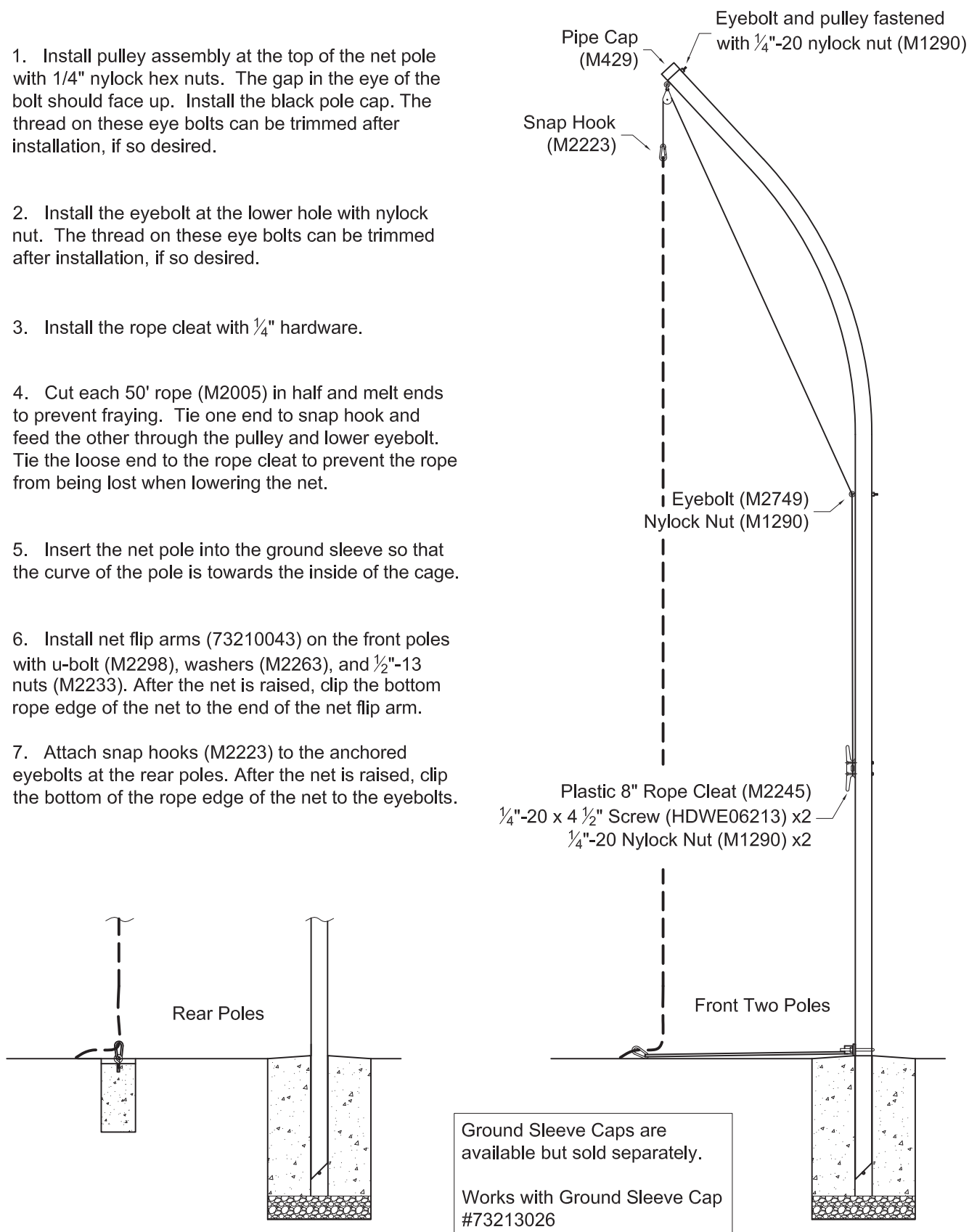




www.gillathletics.com  
800-637-3090

## 802020 - CAGE NET POLES NET POLE ASSEMBLY

1. Install pulley assembly at the top of the net pole with 1/4" nylock hex nuts. The gap in the eye of the bolt should face up. Install the black pole cap. The thread on these eye bolts can be trimmed after installation, if so desired.
2. Install the eyebolt at the lower hole with nylock nut. The thread on these eye bolts can be trimmed after installation, if so desired.
3. Install the rope cleat with 1/4" hardware.
4. Cut each 50' rope (M2005) in half and melt ends to prevent fraying. Tie one end to snap hook and feed the other through the pulley and lower eyebolt. Tie the loose end to the rope cleat to prevent the rope from being lost when lowering the net.
5. Insert the net pole into the ground sleeve so that the curve of the pole is towards the inside of the cage.
6. Install net flip arms (73210043) on the front poles with u-bolt (M2298), washers (M2263), and 1/2"-13 nuts (M2233). After the net is raised, clip the bottom rope edge of the net to the end of the net flip arm.
7. Attach snap hooks (M2223) to the anchored eyebolts at the rear poles. After the net is raised, clip the bottom of the rope edge of the net to the eyebolts.





www.gillathletics.com  
800-637-3090

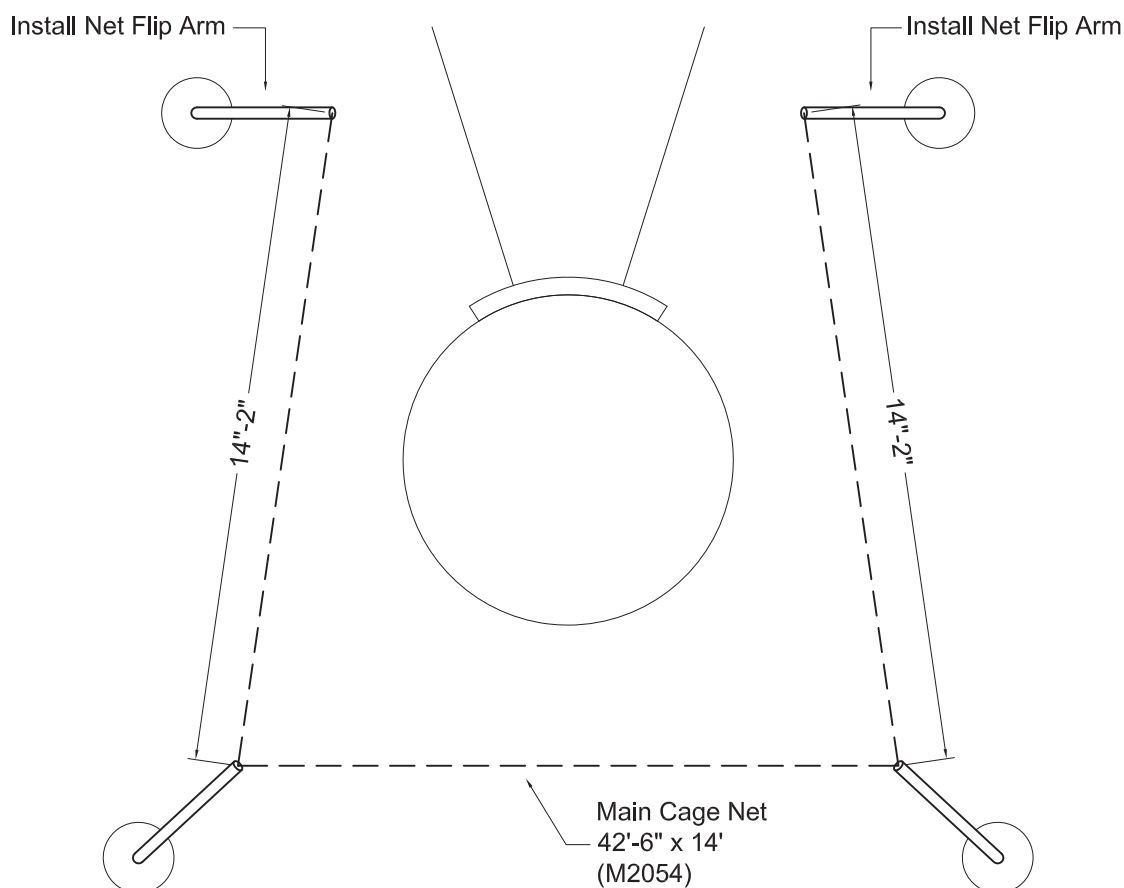
## 8050 - ALUMINUM SHOT PUT CAGE SPECIFICATIONS

1. To minimize sag, the net is supported by a vinyl coated steel cable (80544). To install the cable, weave it in and out through every 5th net opening just below the top edge of the net. When finished, the loops at each end of the cable should be even with the ends of the net.

2. To ensure the net is evenly spaced when it is installed, mark each hook position on the net according to the diagram below. Stretch the net out flat and stake one upper corner to the ground along with the end of a 50 ft. long measuring tape. Stretch the net, cable, and tape to 42' 6" and stake the corner to hold it's position next to the tape. Mark the top of net and the cable at the dimensions shown.

4. Lay out the net inside the cage poles with each marked position next to the appropriate net rope hook. At each position hook both the net binding and the cable. At each end be sure the hook is through the cable loop.

5. Raise the net to the top of the poles and tie off the ropes. At the base of the front poles, hook the bottom corner of the net to the flip arm. A sand bag or other weight can be placed on the arm to increase the arms resistance. If you desire, additional net flip arms can be purchased. At the rear poles, clip the net to the anchored eyebolts. The bottom 6" of the net is supposed to lay on the ground to help trap a shot.



**WARNING:** This product can expose you to Titanium Dioxide, which is known to the State of California to cause cancer. For more information go to [www.p65warnings.ca.gov](http://www.p65warnings.ca.gov).

[suggestions@gillathletics.com](mailto:suggestions@gillathletics.com)

Copyright ©2016 by Gill Athletics. All rights reserved.

GILL ATH  
06-07-16  
8050\_net

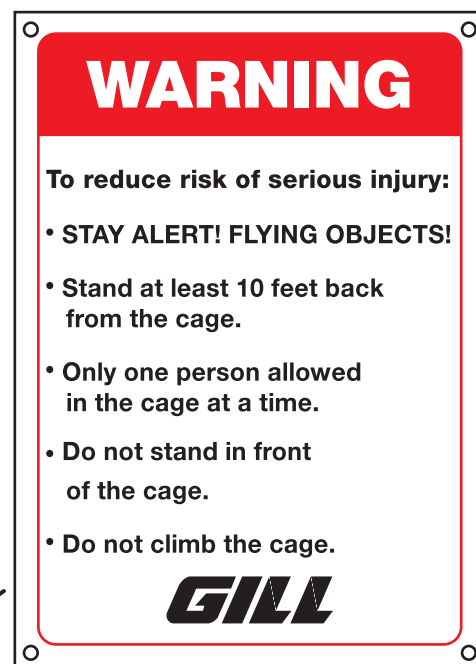


www.gillathletics.com  
800-637-3090

## THROWING CAGE INSTALLATION OF WARNING SIGNS

**For the protection of athletes, spectators, and coaches install warning signs according to the diagram below.**

Attach signs (M2322) to the cage net with the included 1.25" rings (M1250) in each corner. Signs should face away from the cage toward spectators.



**Center Back:** Attach sign to the outside of the net at eye level in the middle of the back of the cage.



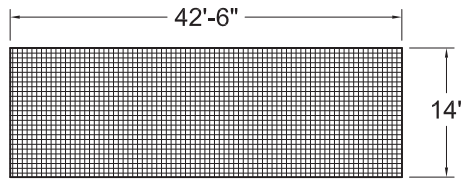
**Left Front Side:** Attach sign to the outside of the net at eye level near the front left side of the cage.



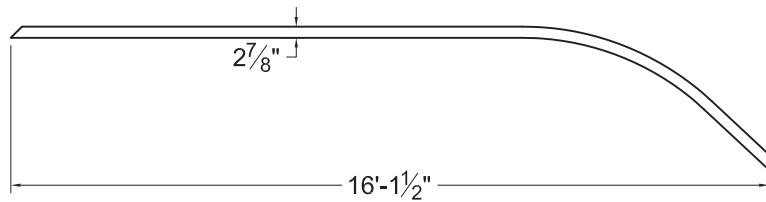
**Right Front Side:** Attach sign to the outside of the net at eye level near the front right side of the cage.



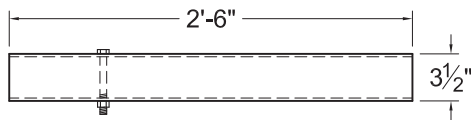
Main Net  
M2054  
x1



Aluminum Net Pole  
802020  
x4



PVC Ground Sleeve  
802025  
x4



### Cage Components Box - 805040

Warning Sign  
M2322  
x3  
Snap Ring  
M1250  
x12



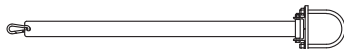
1/4" Polyester Rope  
M2005  
(25ft Sections)  
x4 sections

Pipe Caps  
M429  
x4



Net Support Cable  
42' Long  
80544  
x1

Net Arm  
73210043  
x2



HARDWARE BAG x 1:		
QTY.	M#	DESCRIPTION
16	M1290	1/4"-20 Nylock Hex Nut
4	M2729	*Pulley for 1/4" Rope
8	M2749	*1/4"-20 x 4" Eyebolt
6	M2223	3/8" Snap Hook
4	M2245	Plastic 8" Rope Cleat
8	HDWE06213	1/4"-20 x 4 1/2" Screw
1	ANCR00045	Installation Tool for Concrete Anchor
2	ANCR00046	Drop-In Concrete Anchor; 3/8"-16
2	HDWE07027	3/8"-16 X 7/8" Eyebolt; 2.5" Total Length

\* The pulleys must be assembled onto four of the eyebolts.