



800-637-3090

# ALUMINUM POLE VAULT PIT PLATFORM 733667 for use with PV Pit 667V

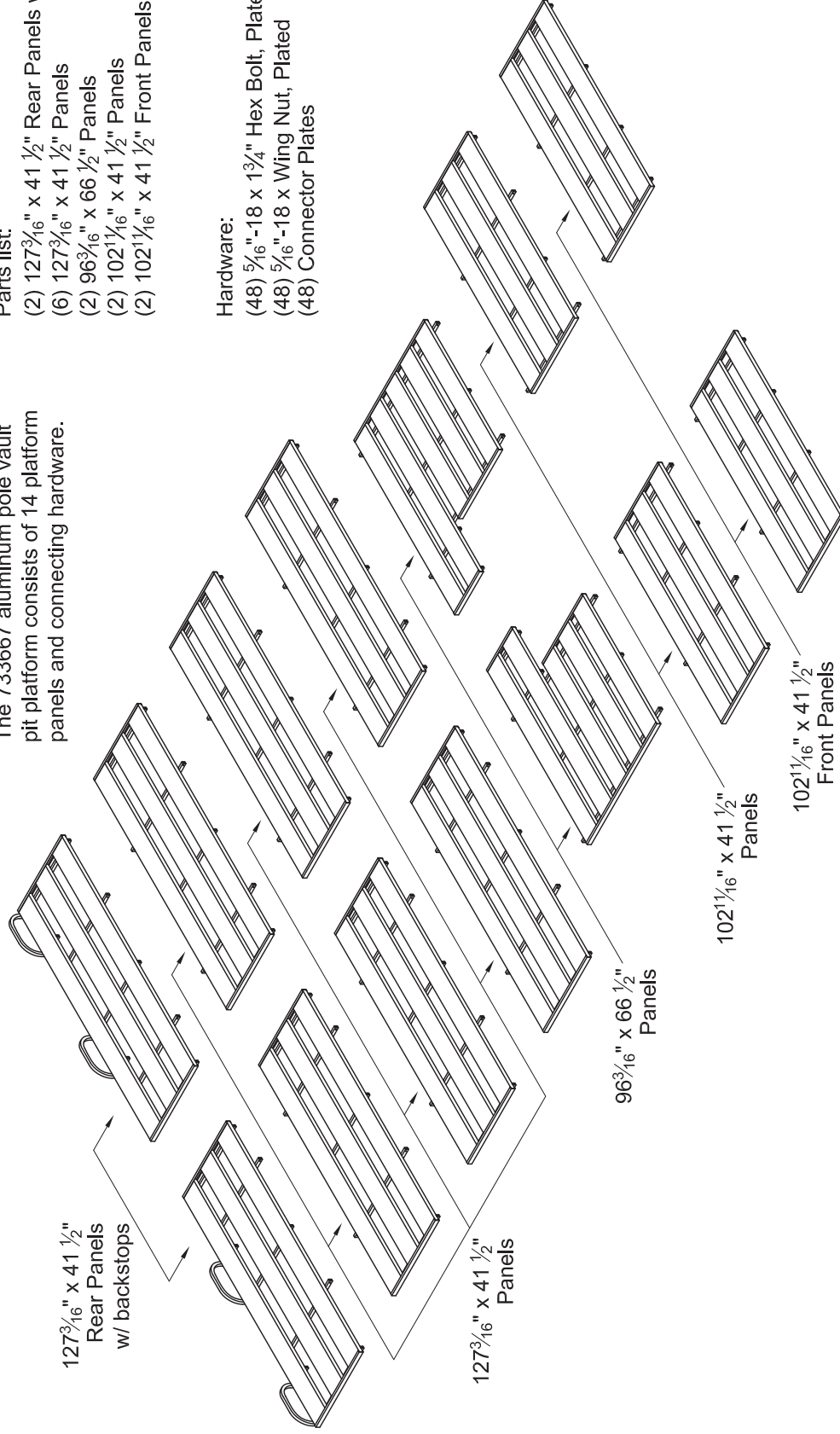
## ASSEMBLY INSTRUCTIONS

The 733667 aluminum pole vault pit platform consists of 14 platform panels and connecting hardware.

- Parts list:
- (2) 127<sup>3</sup>/<sub>16</sub>" x 41<sup>1</sup>/<sub>2</sub>" Rear Panels w/ backstops
  - (6) 127<sup>3</sup>/<sub>16</sub>" x 41<sup>1</sup>/<sub>2</sub>" Panels
  - (2) 96<sup>3</sup>/<sub>16</sub>" x 66<sup>1</sup>/<sub>2</sub>" Panels
  - (2) 102<sup>1</sup>/<sub>16</sub>" x 41<sup>1</sup>/<sub>2</sub>" Panels
  - (2) 102<sup>1</sup>/<sub>16</sub>" x 41<sup>1</sup>/<sub>2</sub>" Front Panels

### Hardware:

- (48) <sup>5</sup>/<sub>16</sub>" -18 x <sup>1</sup>/<sub>4</sub>" Hex Bolt, Plated
- (48) <sup>5</sup>/<sub>16</sub>" -18 x Wing Nut, Plated
- (48) Connector Plates

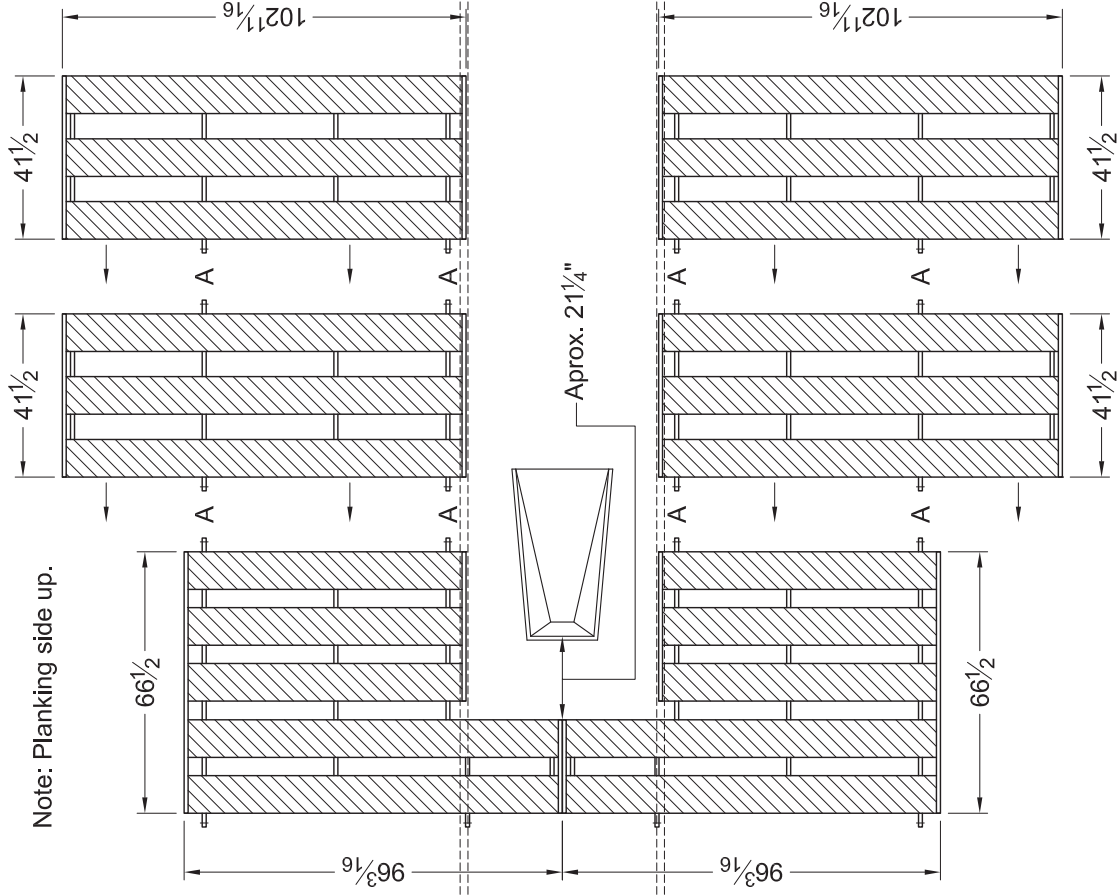




800-637-3090

## ALUMINUM POLE VAULT PIT PLATFORM 733667 for use with PV Pit 667V

Note: Planking side up.



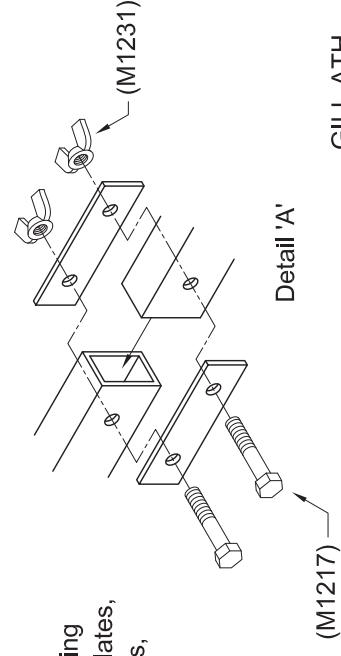
Begin assembly by laying out the six forward most panels. The two  $66\frac{1}{2}$ " x  $96\frac{3}{16}$ " panels should be set approximately  $21\frac{1}{4}$ " behind the vault box's back edge.

Line up the two  $41\frac{1}{2}$ " x  $102\frac{11}{16}$ " panels with the  $66\frac{1}{2}$ " x  $96\frac{3}{16}$ " panels as shown. Be sure that the connecting tubes line up. The inside edges of the panels should also line up and fall roughly on the runway lines.

Next, position the two  $41\frac{1}{2}$ " x  $102\frac{11}{16}$ " Front panels forward of the  $41\frac{1}{2}$ " x  $102\frac{11}{16}$ " panels as shown. The Front panels only have connecting tubes extending out from underneath the planking on one side.

It is important to get the orientation of the platform correct at this stage. Moving the platform while assembled is difficult and is not recommended. The inside edges of these panels should align with the runway.

Fasten panels together using two  $\frac{3}{2}$ " long connector plates, two  $\frac{5}{16}$ "-18 x  $1\frac{3}{4}$ " hex bolts, and two  $\frac{5}{16}$ "-18 wing nuts.



GILL ATH  
01/04/06  
733667\_inst2

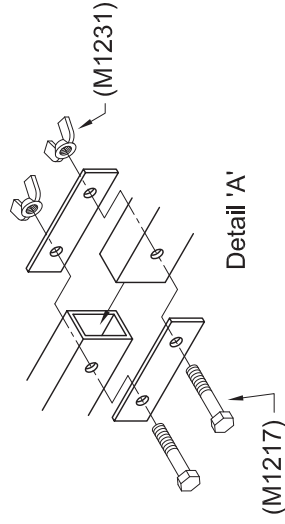


800-637-3090

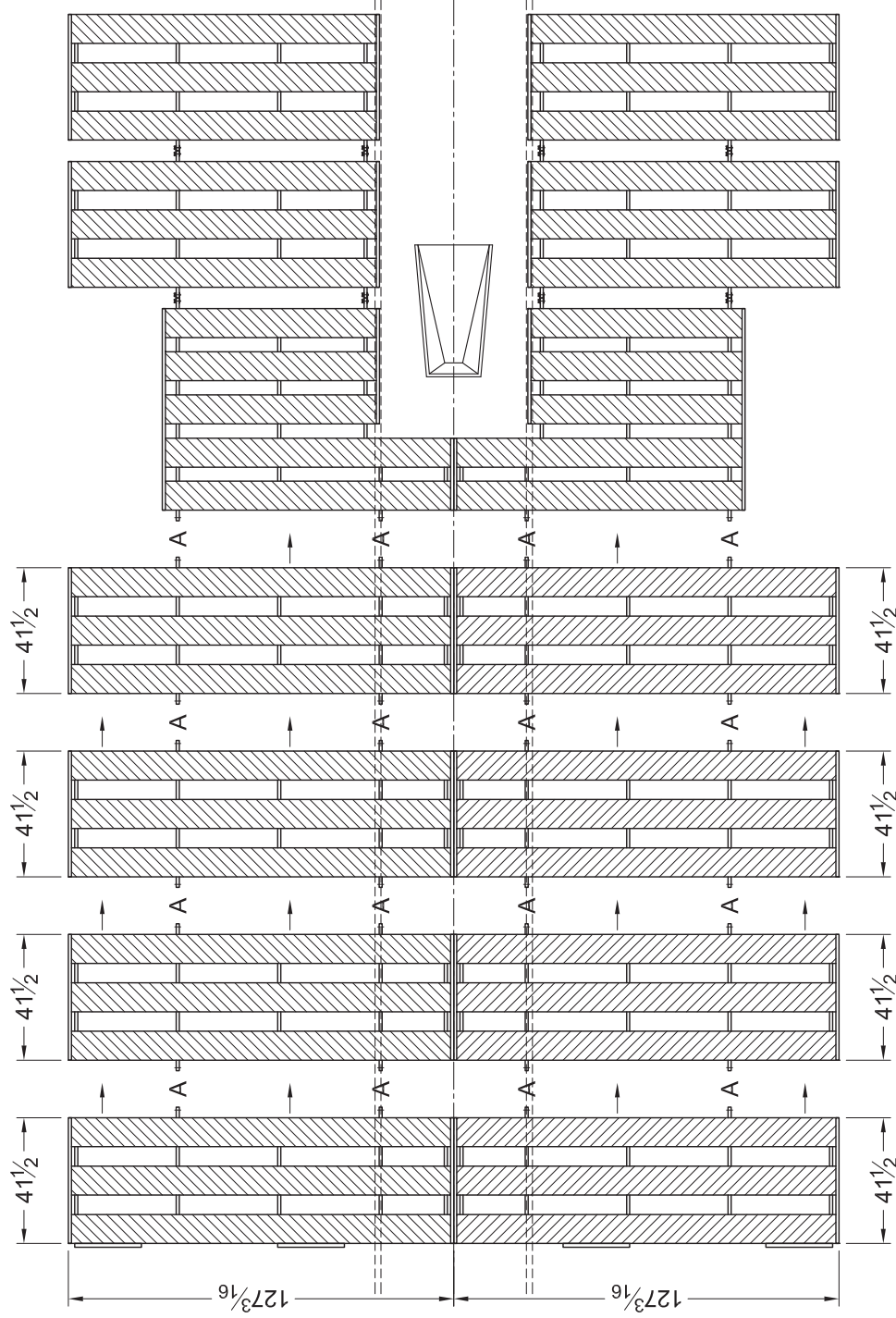
# ALUMINUM POLE VAULT PIT PLATFORM 733667 for use with PV Pit 667V

After the six forward panels are correctly positioned and fastened together, begin fastening the  $41\frac{1}{2}$ " x  $127\frac{3}{16}$ " panels in place. The left and right panels should meet at half the width of the runway.

There are six  $41\frac{1}{2}$ " x  $127\frac{3}{16}$ " panels. All six are identical and can be used on either the left or right side. Next, position and fasten the  $41\frac{1}{2}$ " x  $127\frac{3}{16}$ " Backstop panels to the rear of the platform.



Fasten panels together using two  $3\frac{1}{2}$ " long connector plates, two  $\frac{5}{16}$ "-18 x  $1\frac{3}{4}$ " hex bolts, and two  $\frac{5}{16}$ "-18 wing nuts.



**WARNING:** Cancer and Reproductive Harm –  
For more information go to [www.p65warnings.ca.gov](http://www.p65warnings.ca.gov)

Copyright ©2006 by Gill Athletics. All rights reserved.

GILL ATH  
01/04/06  
733667\_inst3