



800-637-3090

ALUMINUM POLE VAULT PIT PLATFORM 733656 for use with PV Pit 656

ASSEMBLY INSTRUCTIONS

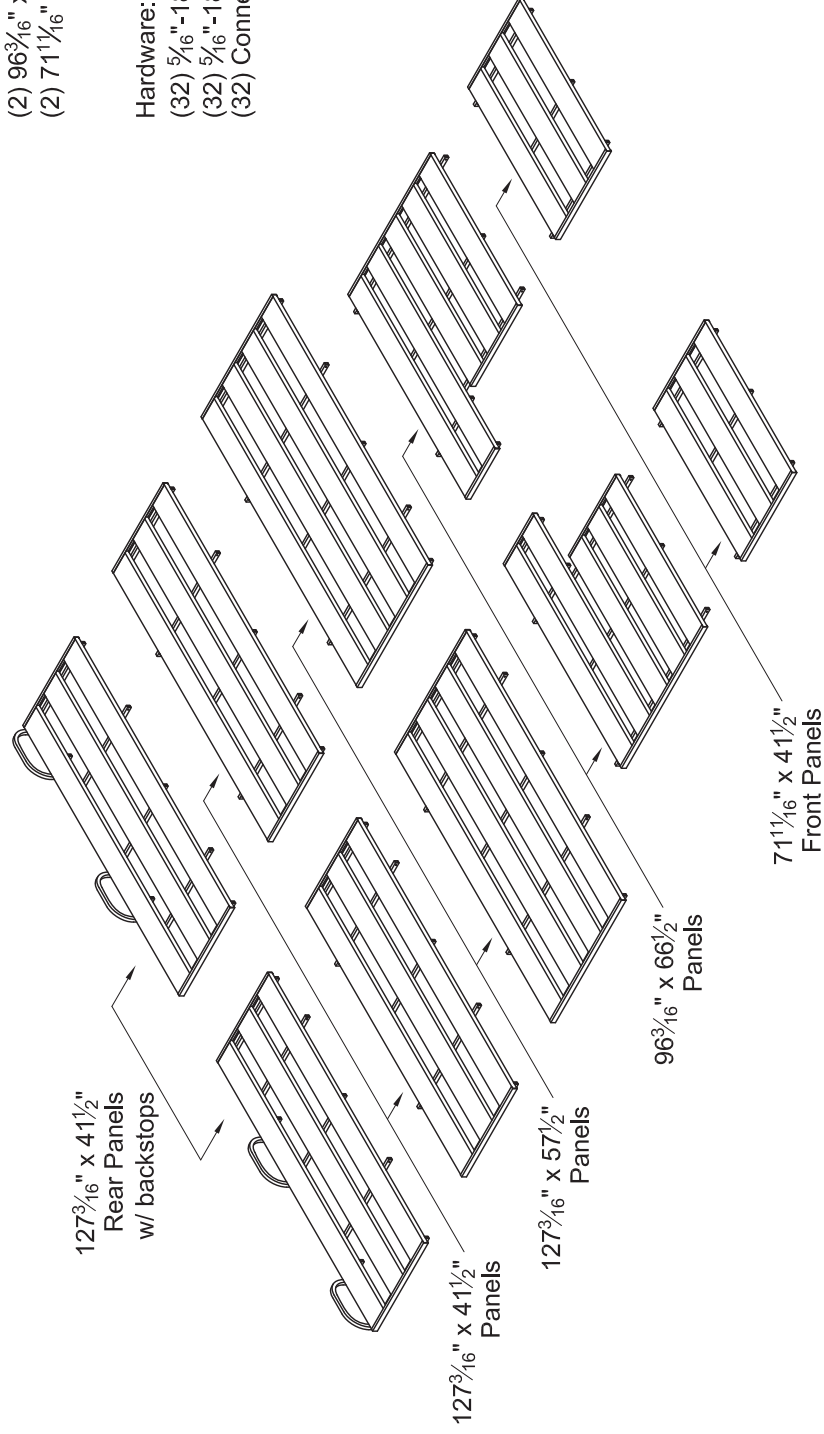
The 733656 aluminum pole vault pit platform consists of 10 platform panels and connecting hardware.

Parts list:

- (2) $127\frac{3}{16}$ " x $41\frac{1}{2}$ " Rear Panels w/ backstops
- (2) $127\frac{3}{16}$ " x $41\frac{1}{2}$ " Panels
- (2) $127\frac{3}{16}$ " x $57\frac{1}{2}$ " Panels
- (2) $96\frac{3}{16}$ " x $66\frac{1}{2}$ " Panels
- (2) $71\frac{1}{16}$ " x $41\frac{1}{2}$ " Front Panels

Hardware:

- (32) $\frac{5}{16}$ " -18 x $1\frac{3}{4}$ " Hex Bolt, Plated
- (32) $\frac{5}{16}$ " -18 x Wing Nut, Plated
- (32) Connector Plates



GILL ATH
02/09/06
733656_inst1



800-637-3090

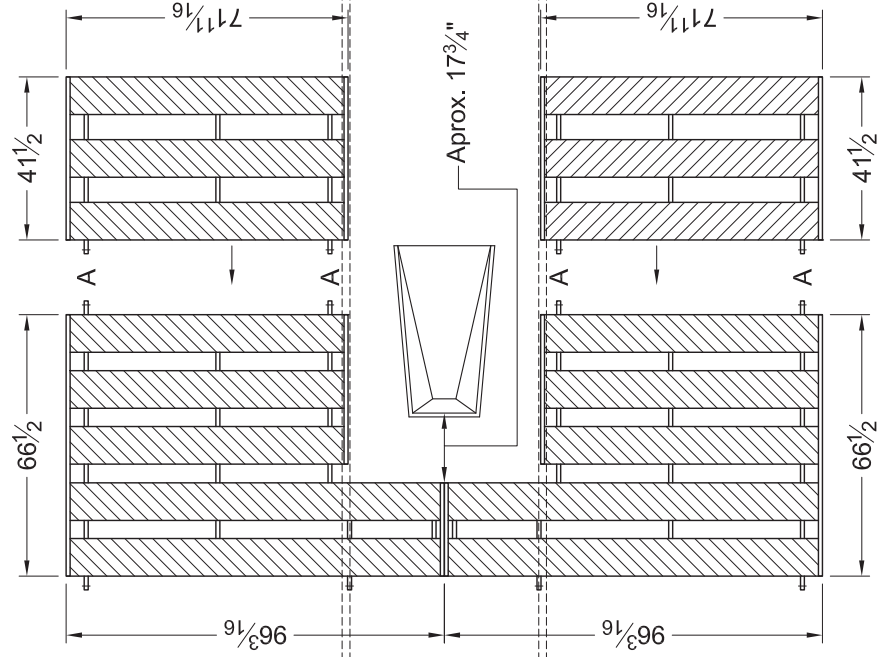
ALUMINUM POLE VAULT PIT PLATFORM 733656 for use with PV Pit 656

Begin assembly by laying out the four forward most panels. The two $66\frac{1}{2}$ " x $96\frac{3}{16}$ " panels should be set approximately $17\frac{3}{4}$ " behind the vault box's back edge.

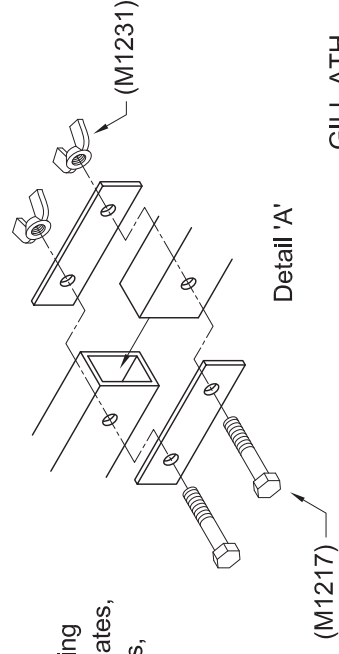
Note: Planking side up.

Line up the two $41\frac{1}{2}$ " x $71\frac{11}{16}$ " front panels with the $66\frac{1}{2}$ " x $96\frac{3}{16}$ " panels as shown. Be sure that the connecting tubes line up. The inside edges of the panels should also line up and fall roughly on the runway lines. The front panels only have connecting tubes extending out from underneath the planking on one side.

It is important to get the orientation of the platform correct at this stage. Moving the platform while assembled is difficult and is not recommended. The inside edges of these panels should align with the runway.



Fasten panels together using two $\frac{3}{2}$ " long connector plates, two $\frac{5}{16}$ "-18 x $1\frac{3}{4}$ " hex bolts, and two $\frac{5}{16}$ "-18 wing nuts.



Detail 'A'

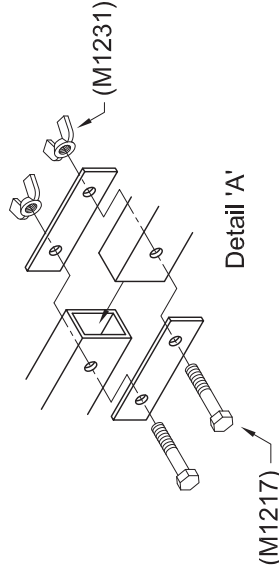
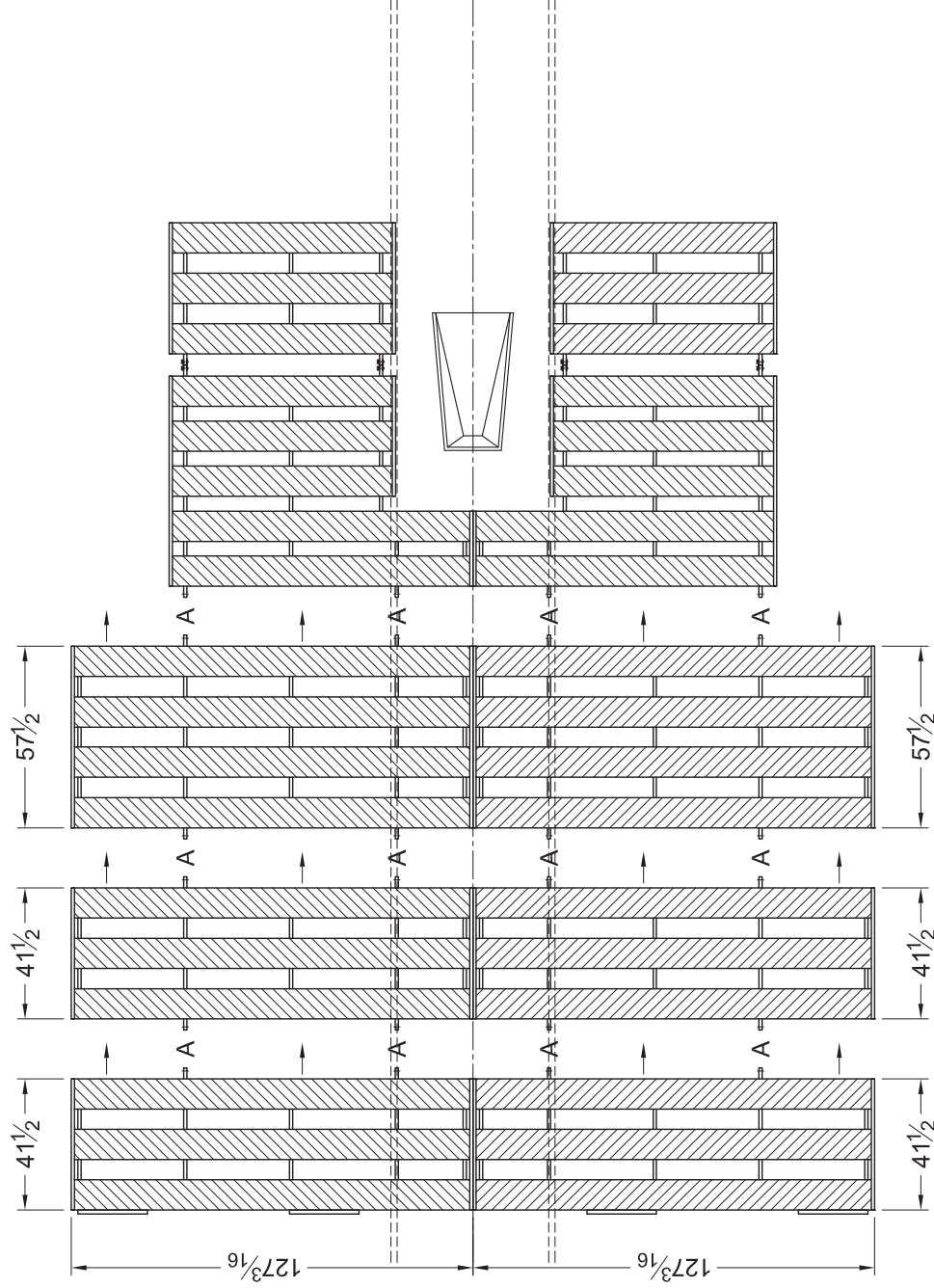
GILL ATH
02/09/06
733656_inst2



800-637-3090

ALUMINUM POLE VAULT PIT PLATFORM 733656 for use with PV Pit 656

After the four forward panels are correctly positioned and fastened together, fasten the $57\frac{1}{2}$ " x $127\frac{3}{16}$ " panels in place. The left and right panels should meet at half the width of the runway. To the rear of those, fasten the $41\frac{1}{2}$ " x $127\frac{3}{16}$ " panels. Next, position and fasten the $41\frac{1}{2}$ " x $127\frac{3}{16}$ " Backstop panels to the rear of the platform.



Fasten panels together using two $3\frac{1}{2}$ " long connector plates, two $\frac{5}{16}$ "-18 x $1\frac{3}{4}$ " hex bolts, and two $\frac{5}{16}$ "-18 wing nuts.

WARNING: Cancer and Reproductive Harm –
For more information go to www.p65warnings.ca.gov

Copyright ©2006 by Gill Athletics. All rights reserved.

GILL ATH
02/09/06
733656_inst3