



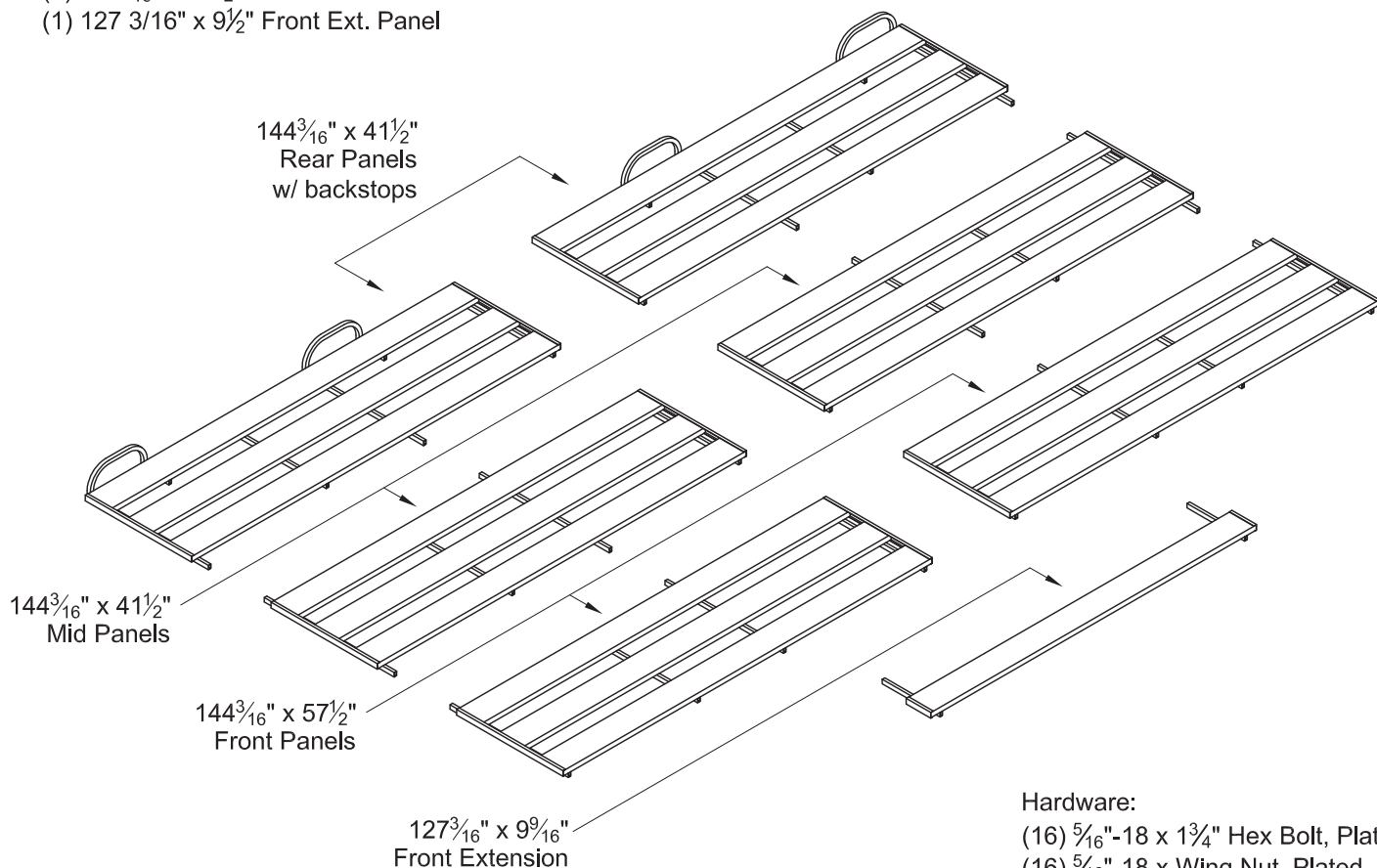
www.gillathletics.com
800-637-3090

733647 - ALUMINUM HJ PIT PLATFORM INSTRUCTIONS

Parts list:

- (2) $144\frac{3}{16}$ " x $41\frac{1}{2}$ " Rear Panels w/ backstops
- (2) $144\frac{3}{16}$ " x $41\frac{1}{2}$ " Mid Panels
- (2) $144\frac{3}{16}$ " x $41\frac{1}{2}$ " Front Panels
- (1) $127\frac{3}{16}$ " x $9\frac{1}{2}$ " Front Ext. Panel

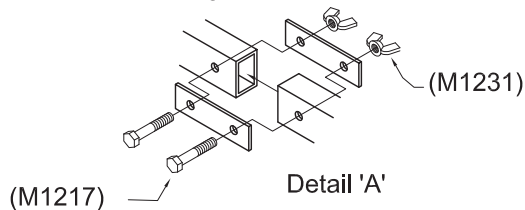
The 733647 aluminum pole vault pit platform consists of 7 platform panels.



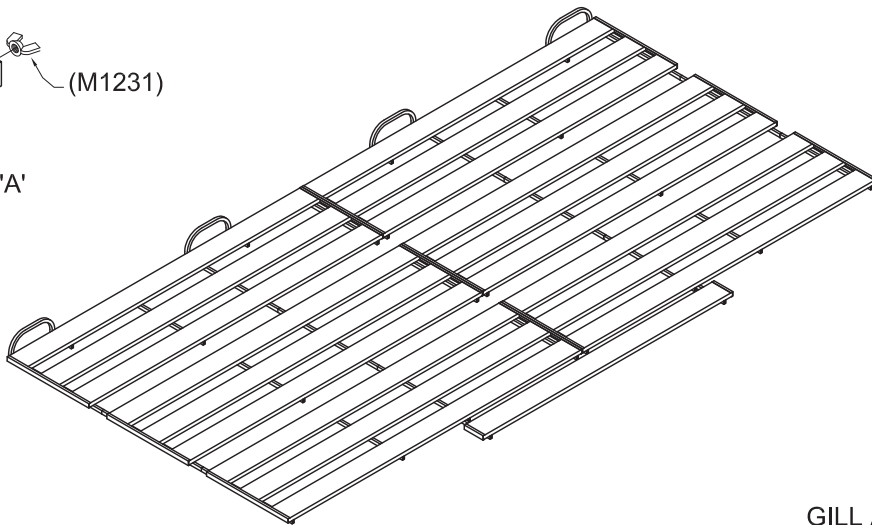
Hardware:

- (16) $\frac{5}{16}$ "-18 x $1\frac{3}{4}$ " Hex Bolt, Plated
- (16) $\frac{5}{16}$ "-18 x Wing Nut, Plated
- (16) Connector Plates

Layout the platform panels as shown. Fasten panels together using two $3\frac{1}{2}$ " long connector plates, two $\frac{5}{16}$ "-18 x $1\frac{3}{4}$ " hex bolts, and two $\frac{5}{16}$ "-18 wing nuts.



NOTE: Front extension stringers run underneath front panel planks with their ends even with the back edge of the front plank.



WARNING: Cancer and Reproductive Harm –
For more information go to www.p65warnings.ca.gov