



800-637-3090

## ALUMINUM HIGH JUMP PIT PLATFORM 733643A for use with HJ Pit 643V

### ASSEMBLY INSTRUCTIONS

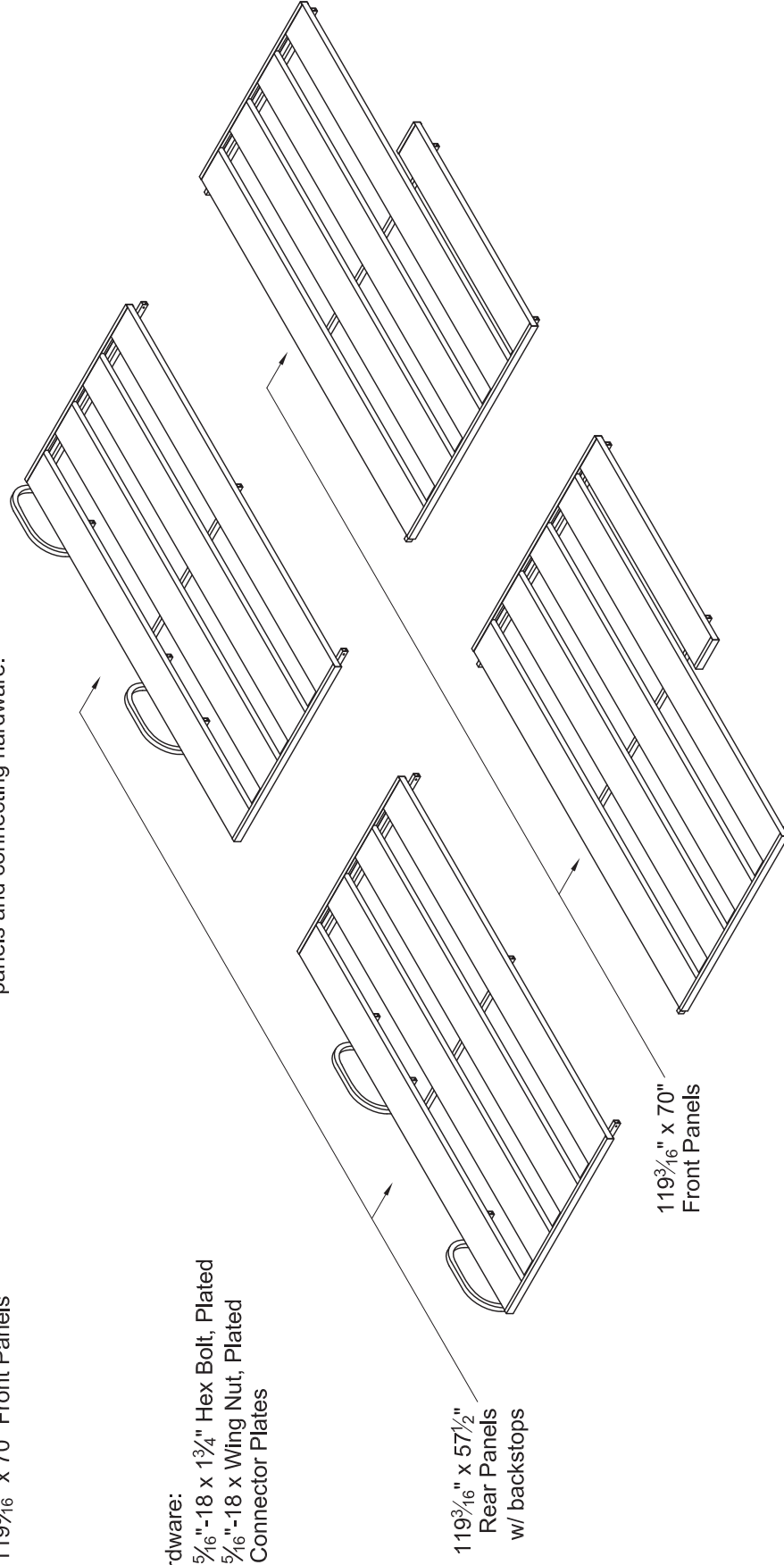
#### Parts list:

- (2) 119 $\frac{3}{16}$ " x 57 $\frac{1}{2}$ " Rear Panels w/ backstops
- (2) 119 $\frac{3}{16}$ " x 70" Front Panels

#### Hardware:

- (8)  $\frac{5}{16}$ "-18 x  $\frac{1}{4}$ " Hex Bolt, Plated
- (8)  $\frac{5}{16}$ "-18 x Wing Nut, Plated
- (8) Connector Plates

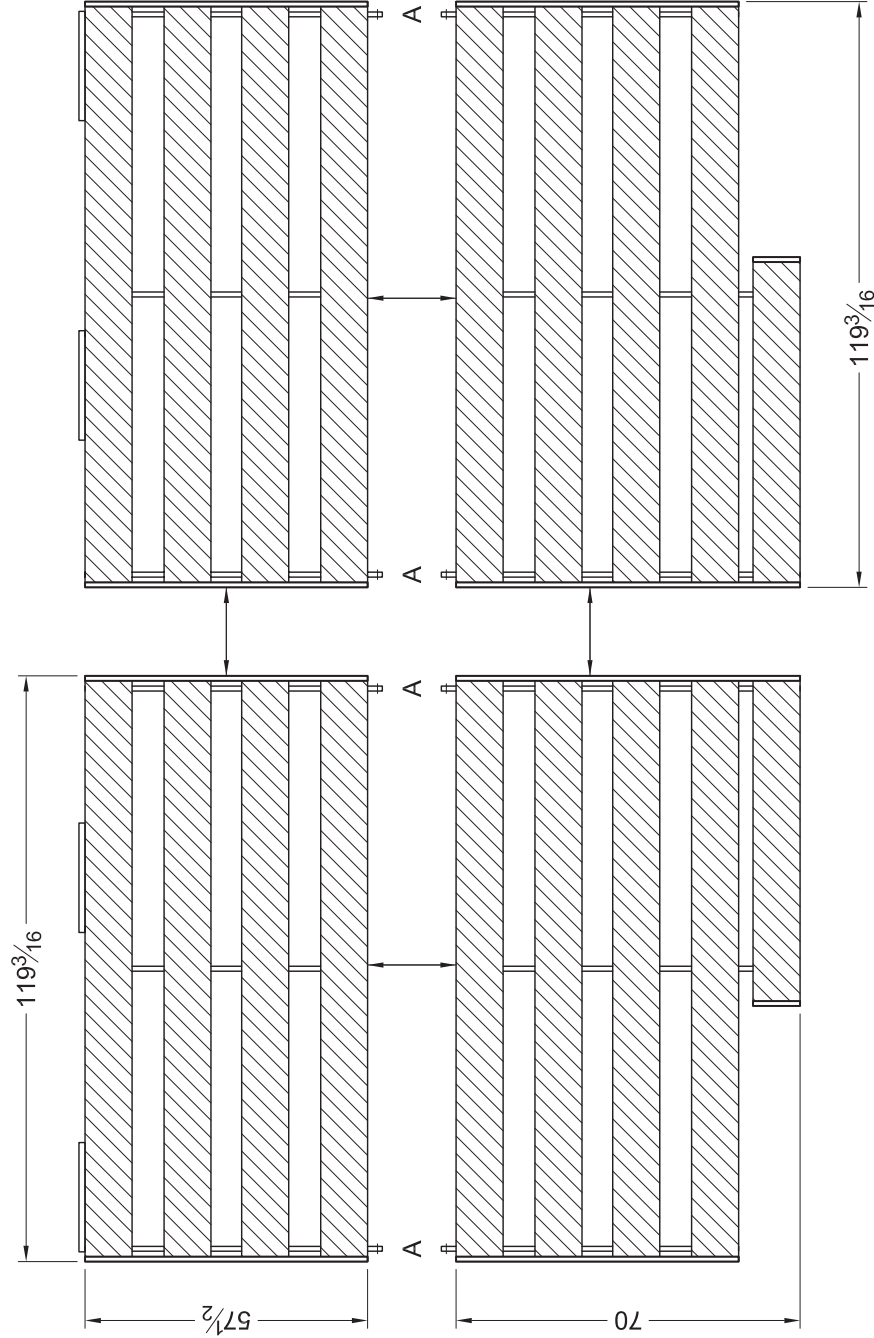
The 733643A aluminum high jump pit platform consists of 4 platform panels and connecting hardware.





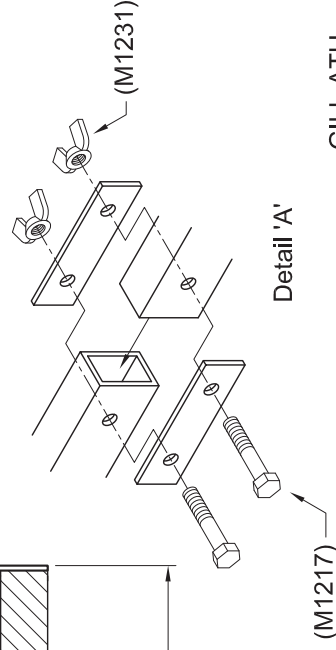
# ALUMINUM HIGH JUMP PIT PLATFORM 733643A for use with HJ Pit 643V

## ASSEMBLY INSTRUCTIONS



Layout the platform panels as shown. Push the left and right side panels together and fasten the rear panels to the front panels.

Fasten panels together using two 3 1/2" long connector plates, two 5/16"-18 x 1 3/4" hex bolts, and two 5/16"-18 wing nuts.



Detail 'A'

GILL ATH  
02/09/06  
733643A\_inst2

Copyright ©2006 by Gill Athletics. All rights reserved.

**WARNING:** Cancer and Reproductive Harm –  
For more information go to [www.p65warnings.ca.gov](http://www.p65warnings.ca.gov)