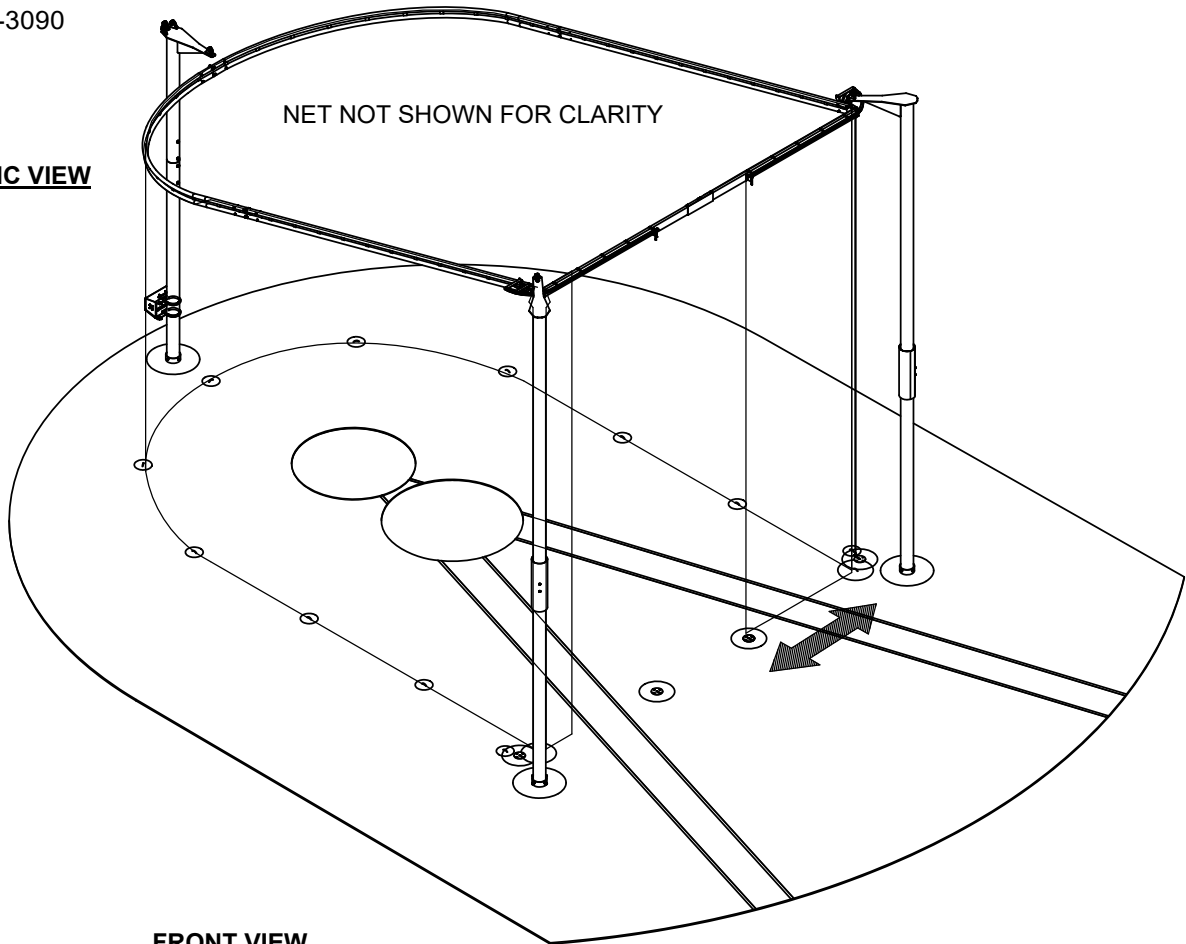




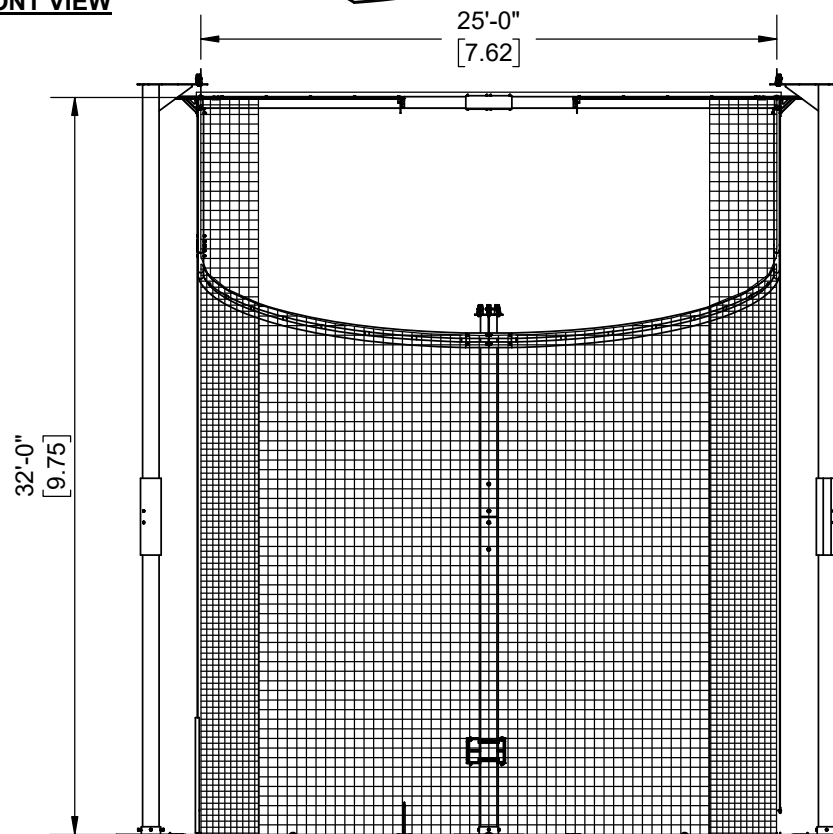
www.gillathletics.com  
800-637-3090

## 753100CXX - DOUBLE RING THROWING CAGE GROUND SLEEVE AND NET ANCHOR FOOTINGS LOCATION

**ISOMETRIC VIEW**



**FRONT VIEW**

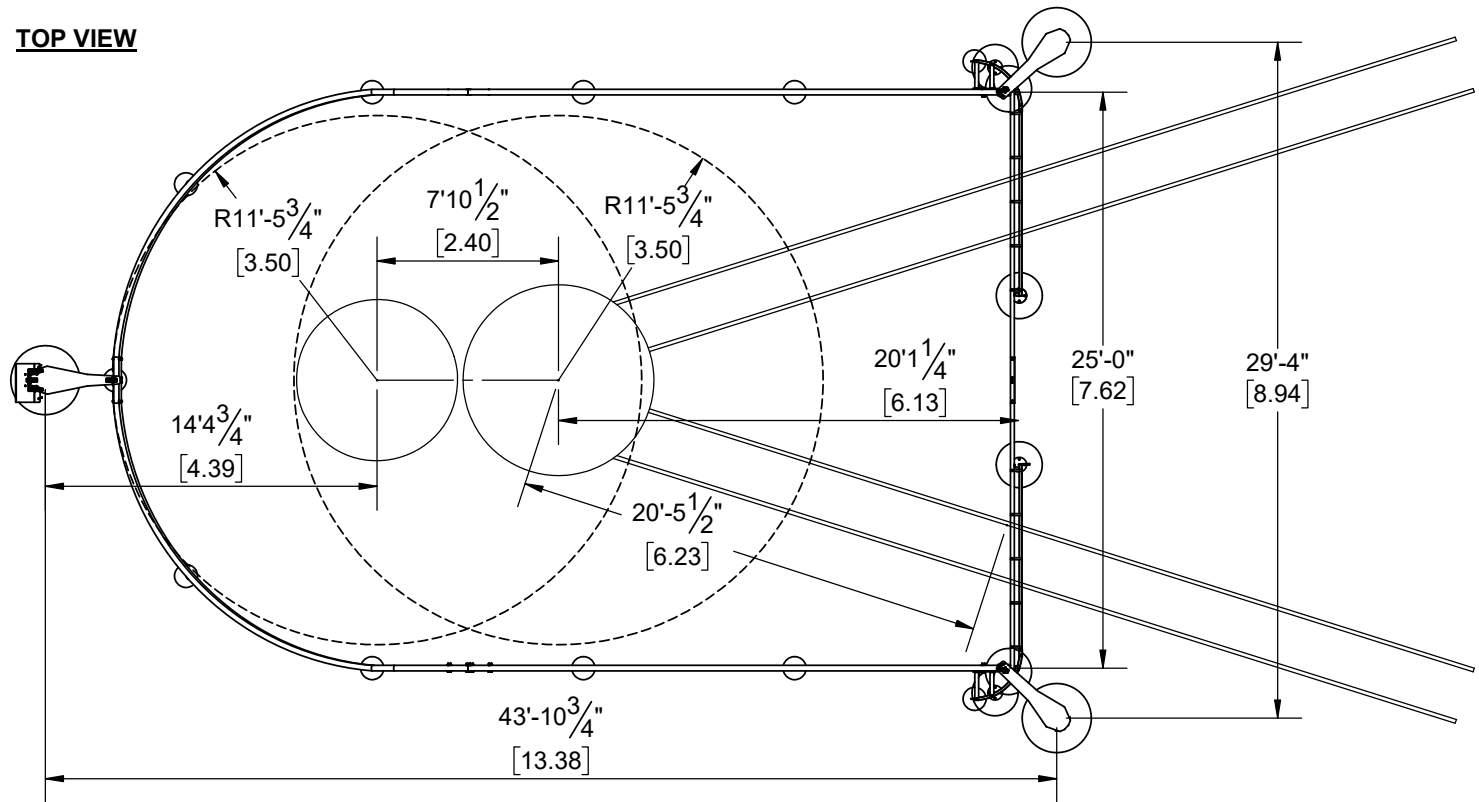




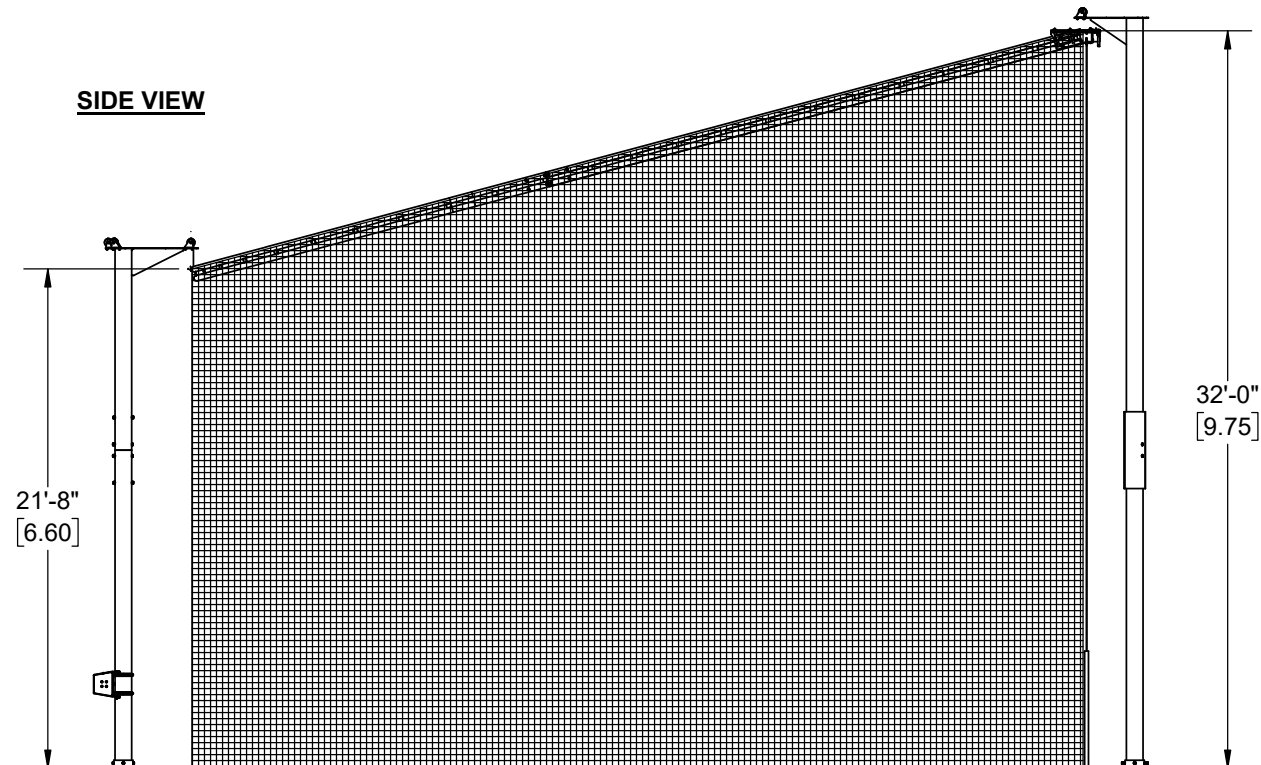
www.gillathletics.com  
800-637-3090

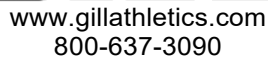
## 753100CXX - DOUBLE RING THROWING CAGE GROUND SLEEVE AND NET ANCHOR FOOTINGS LOCATION

**TOP VIEW**

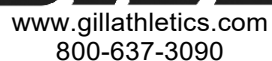


**SIDE VIEW**





7/31/2023  
INST753100GS  
Page 3 of 9



## 753100CXX - DOUBLE RING THROWING CAGE



Ø 2'0"

VERTICAL ORIENTATION OF  
NET ANCHOR U-BOLTS  
(12'6" FROM CENTER LINE)

GROUND  
LEVEL

## U-BOLT CHAIN ASSEMBLY

3'0"

2'0"

- CONCRETE

### TOP VIEW

## NET ANCHOR FOOTINGS

$$25'3\frac{1}{2}''$$

$$[7.71]$$
$$12'7\frac{3}{4}"$$
$$[3.85]$$
$$12'7\frac{3}{4}"$$

$3.85$

27'5"  
[8.35]

①

①

①

①

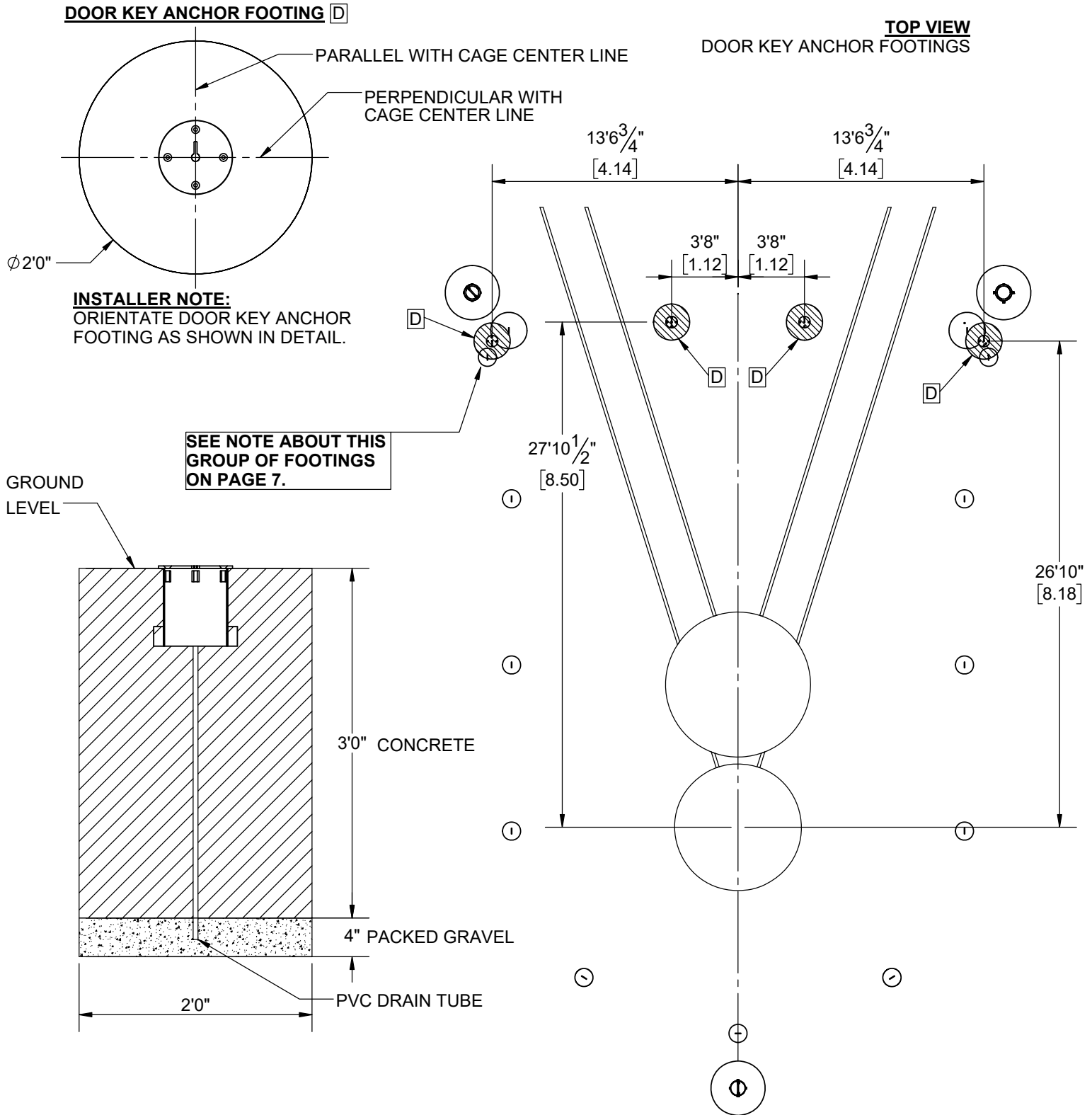
①

⊕



www.gillathletics.com  
800-637-3090

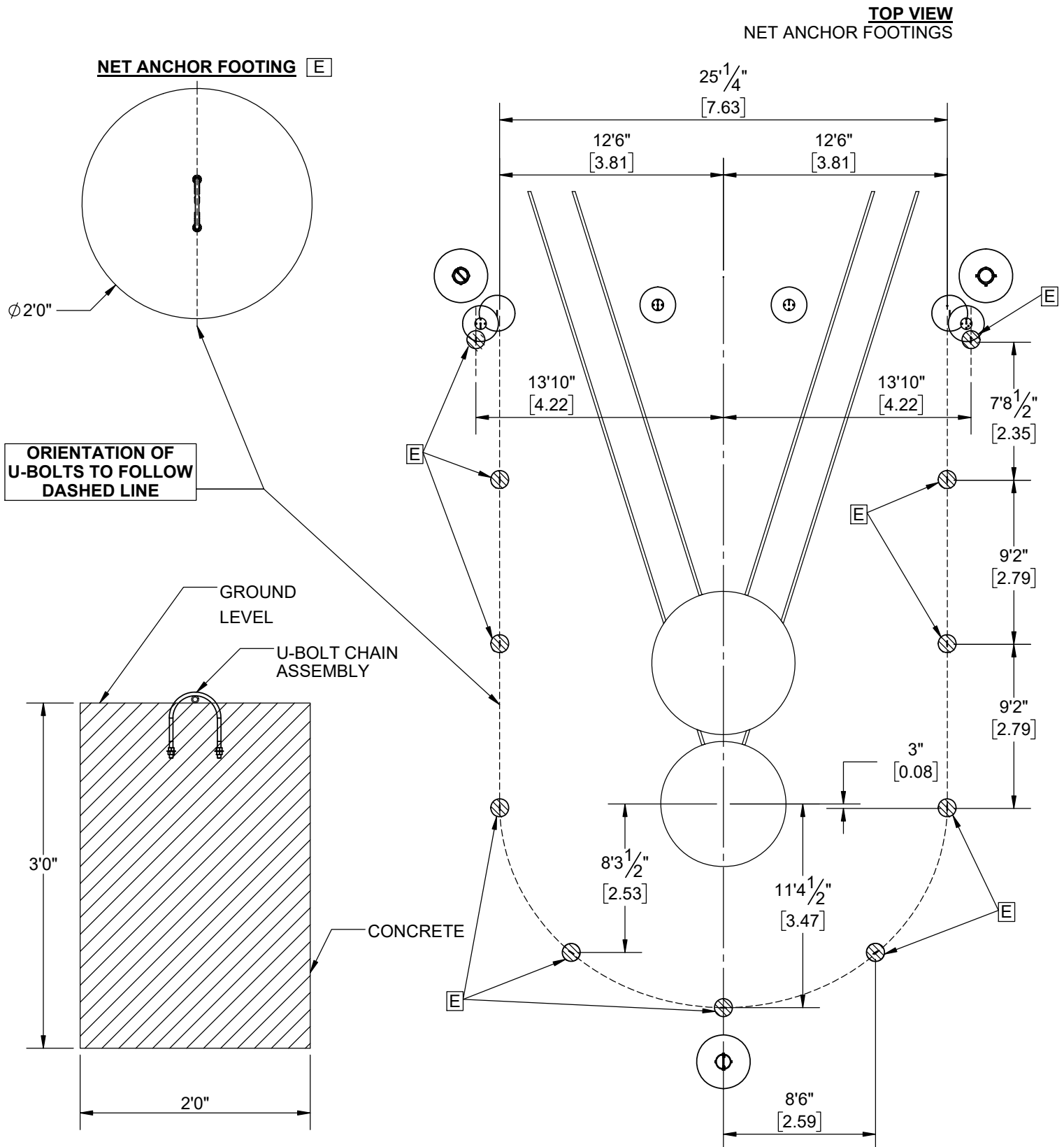
## 753100CXX - DOUBLE RING THROWING CAGE GROUND SLEEVE AND NET ANCHOR FOOTINGS LOCATION



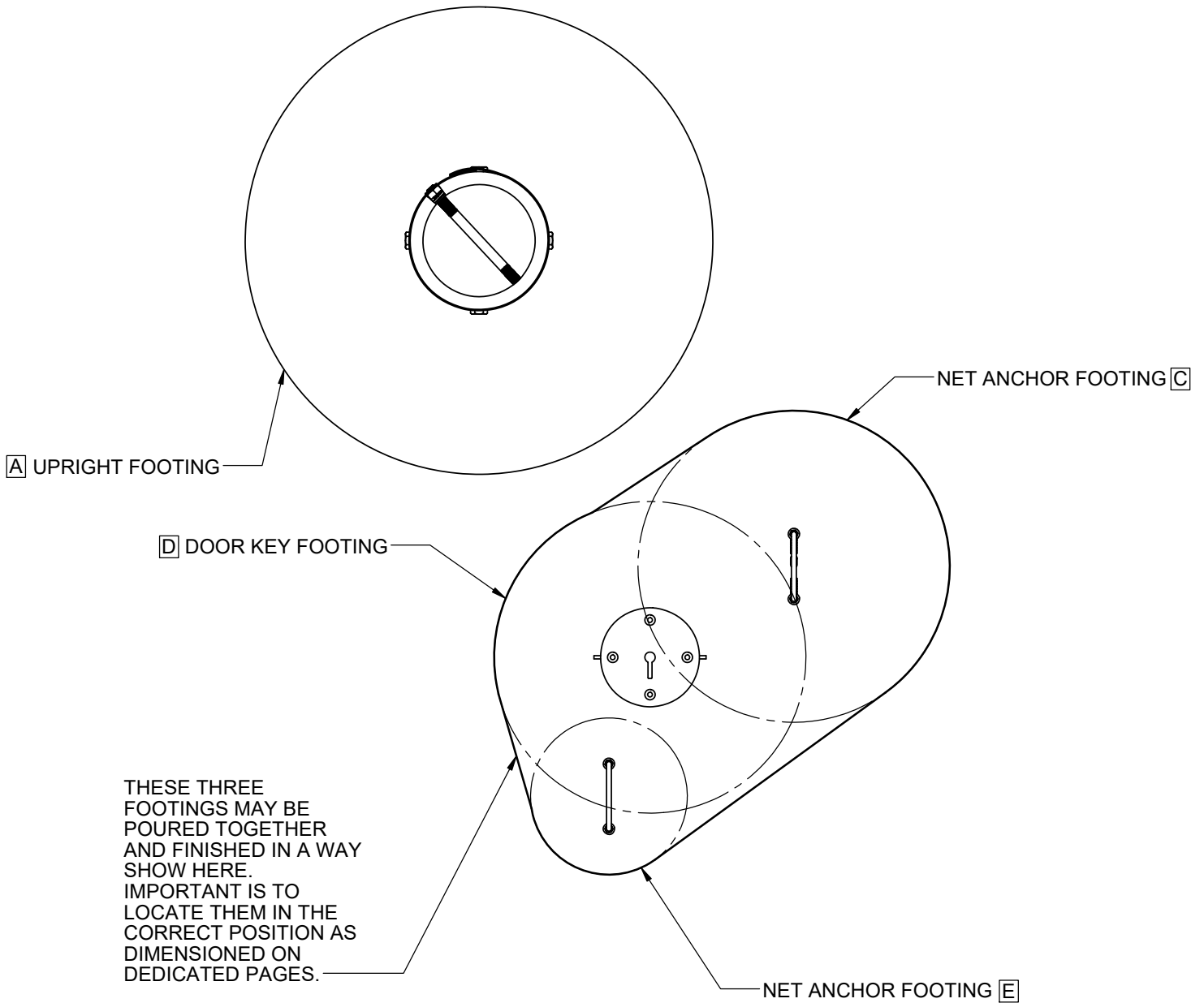


www.gillathletics.com  
800-637-3090

## 753100CXX - DOUBLE RING THROWING CAGE GROUND SLEEVE AND NET ANCHOR FOOTINGS LOCATION



**FOOTING GROUPING**

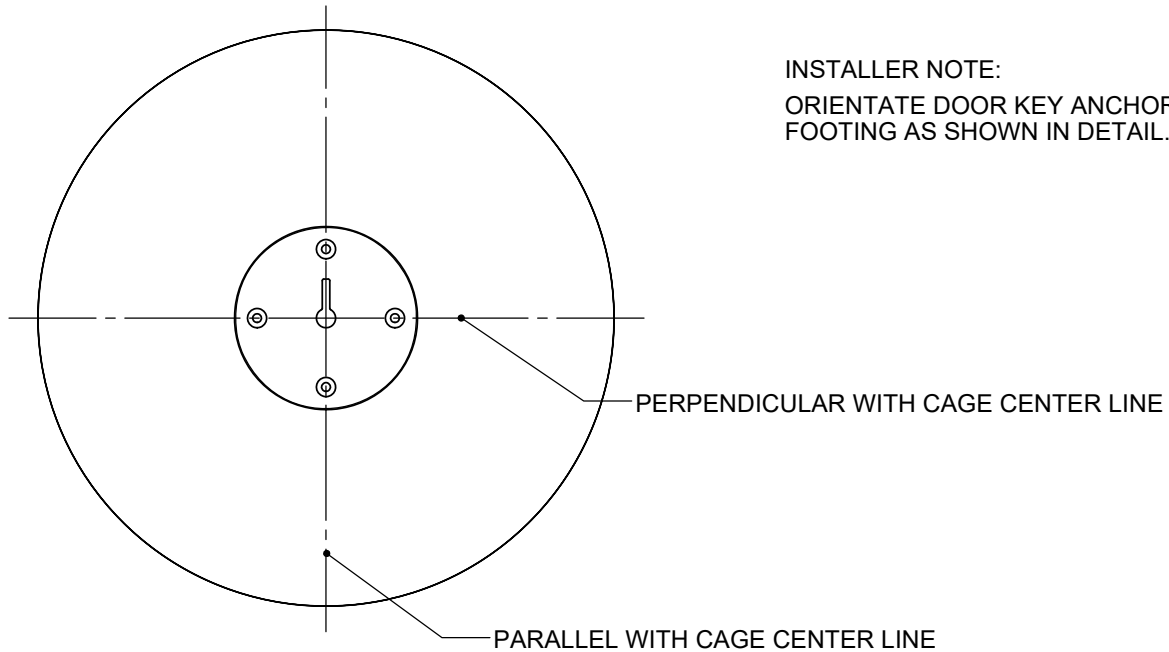




www.gillathletics.com  
800-637-3090

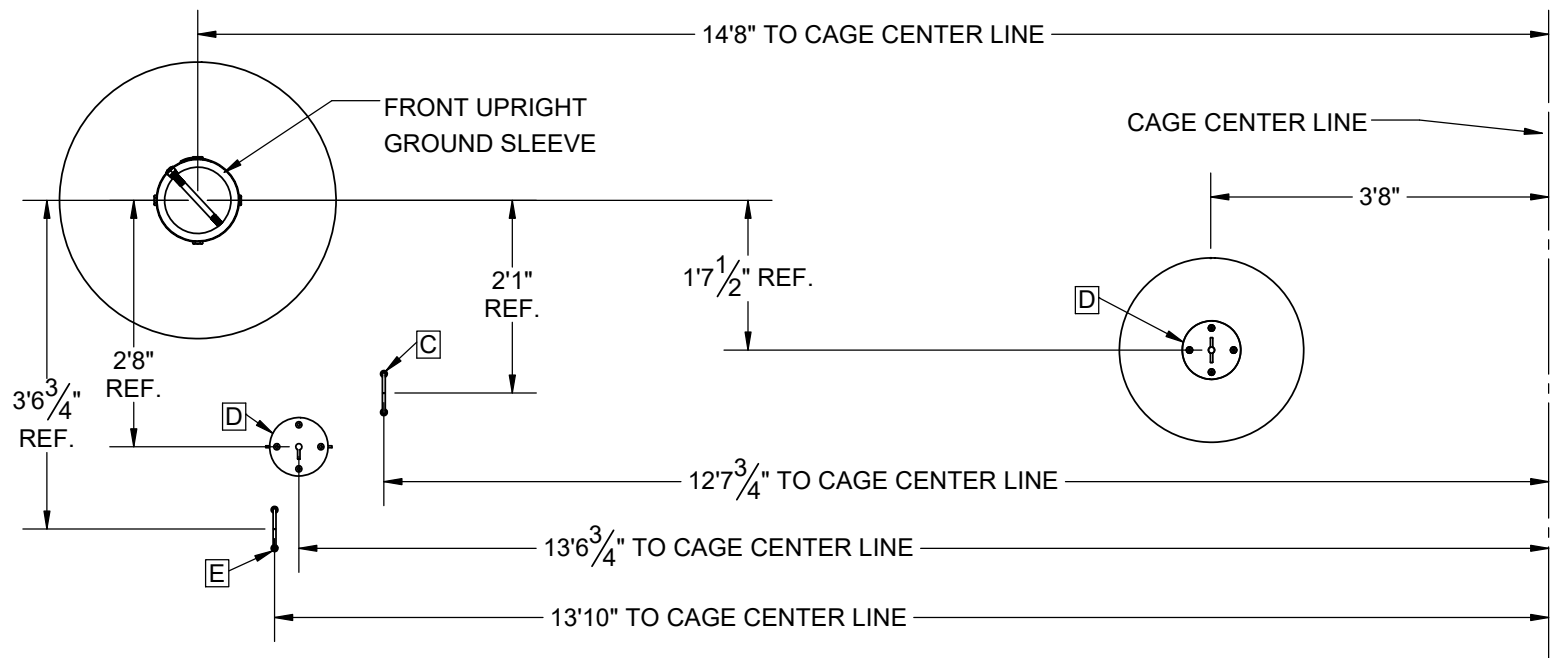
## 753100CXX - DOUBLE RING THROWING CAGE GROUND SLEEVE AND NET ANCHOR FOOTINGS LOCATION

### DOOR KEY ANCHOR FOOTING **D** (BLANK LID INCLUDED FOR INSTALLATION)



INSTALLER NOTE:  
ORIENTATE DOOR KEY ANCHOR  
FOOTING AS SHOWN IN DETAIL.

### **TOP VIEW** MAIN NET AND DOOR KEY ANCHOR FOOTINGS (ONLY LEFT SIDE FROM CENTER LINE SHOWN, RIGHT SIDE IS MIRRORED)



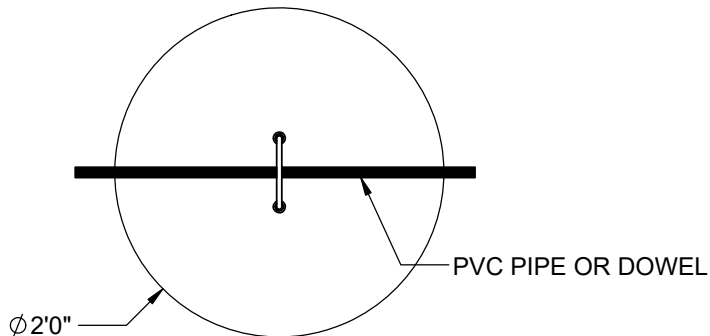




www.gillathletics.com  
800-637-3090

## 753100CXX - DOUBLE RING THROWING CAGE GROUND SLEEVE AND NET ANCHOR FOOTINGS LOCATION

### NET ANCHOR FOOTING [C] [E]



CAST THE U-BOLTS INTO CONCRETE FOR THE NET ANCHOR FOOTINGS.

CAST THE U-BOLT ASSEMBLIES WITH CHAIN THE SAME WAY ENSURING CHAIN GETS PUSHED DOWN.

USE A 3/4" PVC PIPE, DOWEL, ETC. TO SPAN THE HOLE OF THE FOOTING.

HANG UP U-BOLT OVER THIS TO MAINTAIN ITS HEIGHT.

PULL THE PIPE OR DOWEL OUT AFTER THE CONCRETE HAS CURED.

