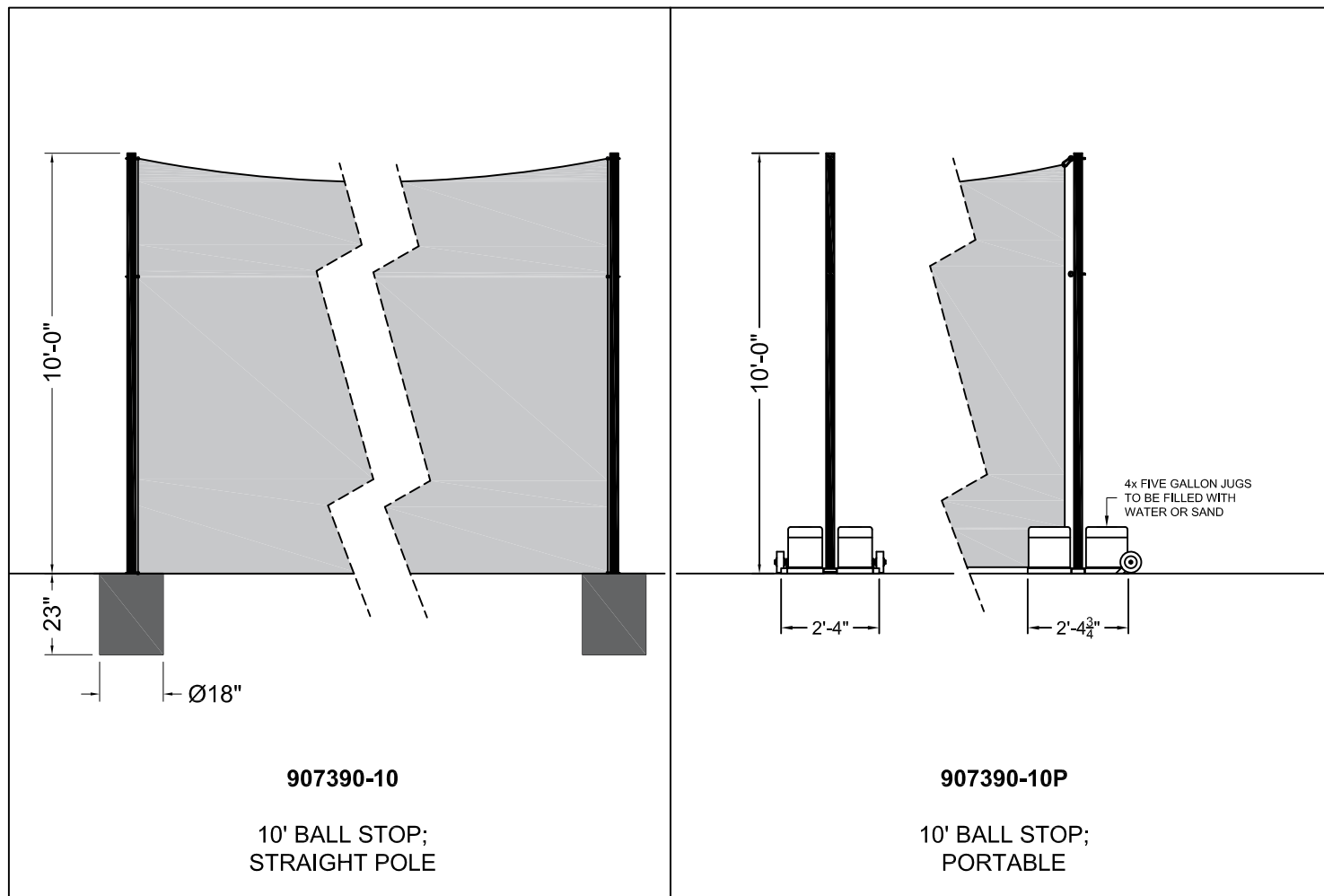




www.gillathletics.com  
800-637-3090

## 10' AND 10' PORTABLE BALL STOP ASSEMBLY INSTRUCTIONS



Read all of the instructions before beginning. Make sure you have all parts and tools you will need. Consult local codes and guidelines. Local conditions may require a different procedure, the following instructions should be considered recommended minimums.

**CAUTION** - contact your local utility companies to locate buried electrical, gas, and water lines before digging holes for footings. Also check for overhead utilities.

**ALWAYS LOWER NETS IN HIGH WIND STORMS**



www.gillathletics.com  
800-637-3090

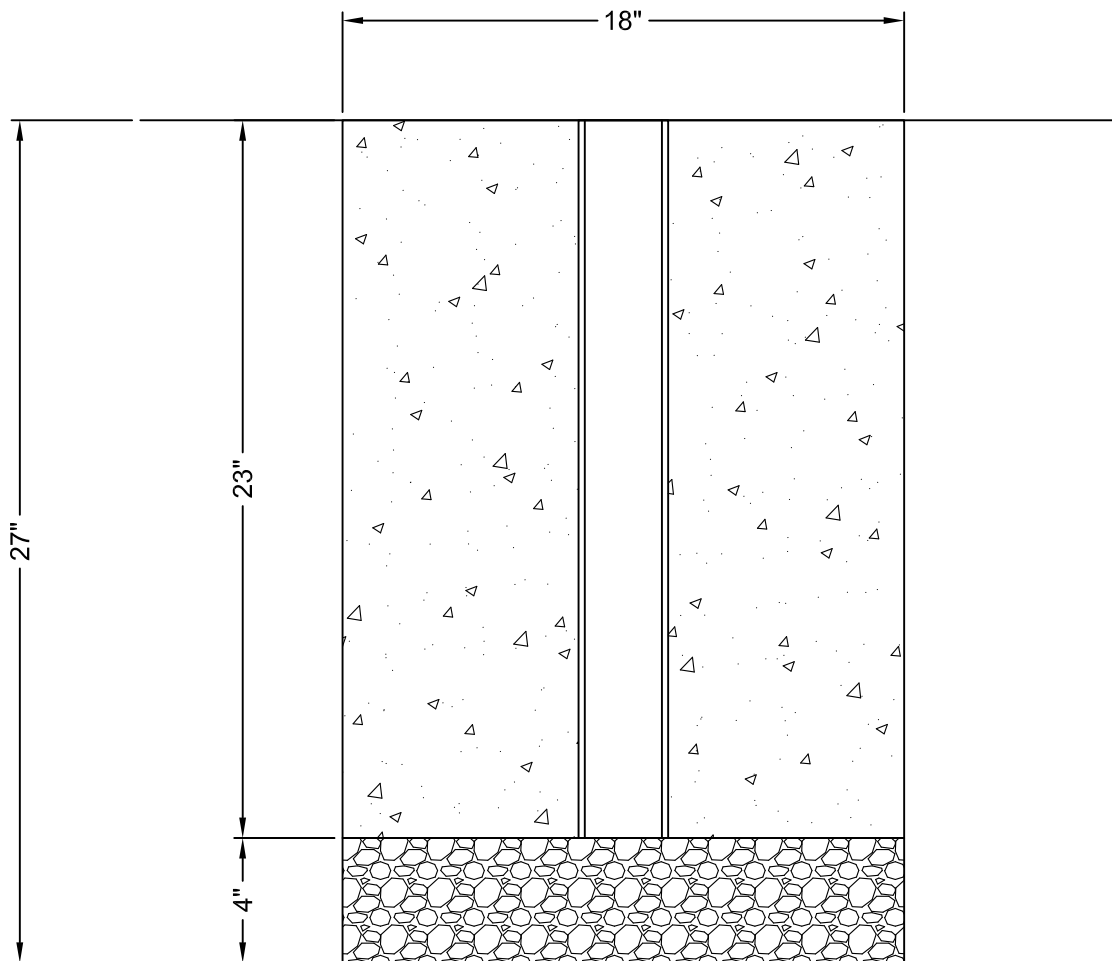
## 10' BALL STOP ASSEMBLY INSTRUCTIONS

1. Locate and dig footings for each upright. Poles are set in ground sleeves. Confirm all locations before setting.

Position and level gravel in the bottom of the hole so that the sleeve opening rests at the proper height at the surface. The gravel should support the sleeve at the proper height and allow water in the sleeve to drain away.

Fix and support the sleeve in position with wire and/or sections of rebar to prevent sleeve movement during the concrete pour. The concrete should slope away from the top edges of the sleeves to ground level to help keep water and debris out of the sleeves.

The footer size is to be determined by the architect/engineer and is based on local codes and soil conditions.



**Concrete must be allowed to fully cure before continuing**



www.gillathletics.com  
800-637-3090

## 10' AND 10' PORTABLE BALL STOP ASSEMBLY INSTRUCTIONS



VINYL COATING ON THE CABLE MUST BE REMOVED BEFORE INSTALLING ROPE CLAMPS.

INSTALL CLAMPS SO THE SADDLE IS ON THE LONG (LIVE) END AND THE U-BOLT IS ON  
THE SHORT (DEAD) END.





www.gillathletics.com  
800-637-3090

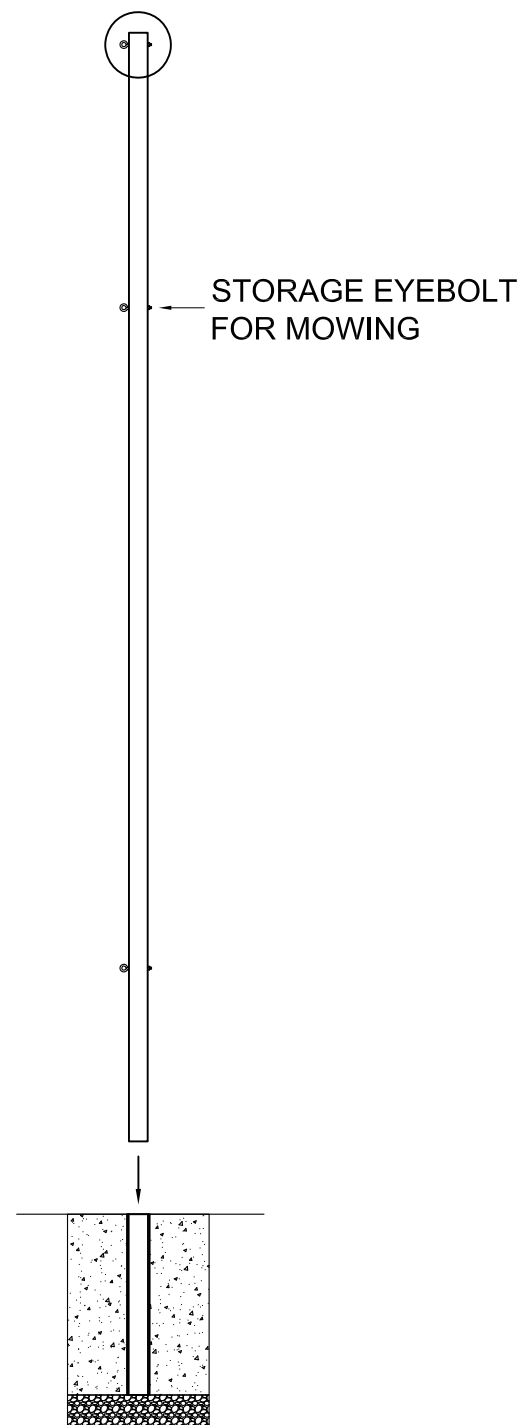
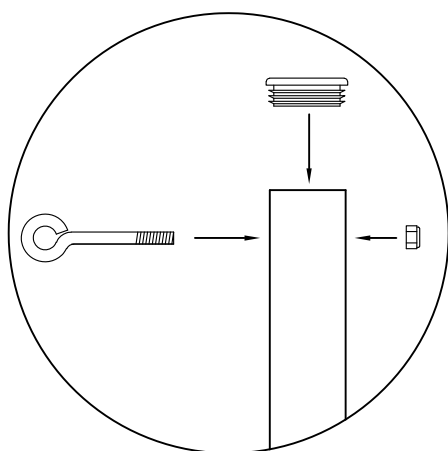
## 10' BALL STOP ASSEMBLY INSTRUCTIONS

1. Attach eye bolts and the pipe caps onto the poles.
2. Set the assembled poles into the ground sleeves.
3. To minimize sag, the net is supported by a vinyl coated steel cable. To install the cable, lay the nets flat on the ground. Cut and form the top cable, installing rope clamps and thimbles on each cable end. Weave the cable in and out through every 5th opening just below the edge of the net.

Install a cable along the bottom of the net in the same fashion.

4. Rotate the end poles so the eye bolts line up with the net. Set all the other poles so the eyebolts are at 90 degrees to the net.

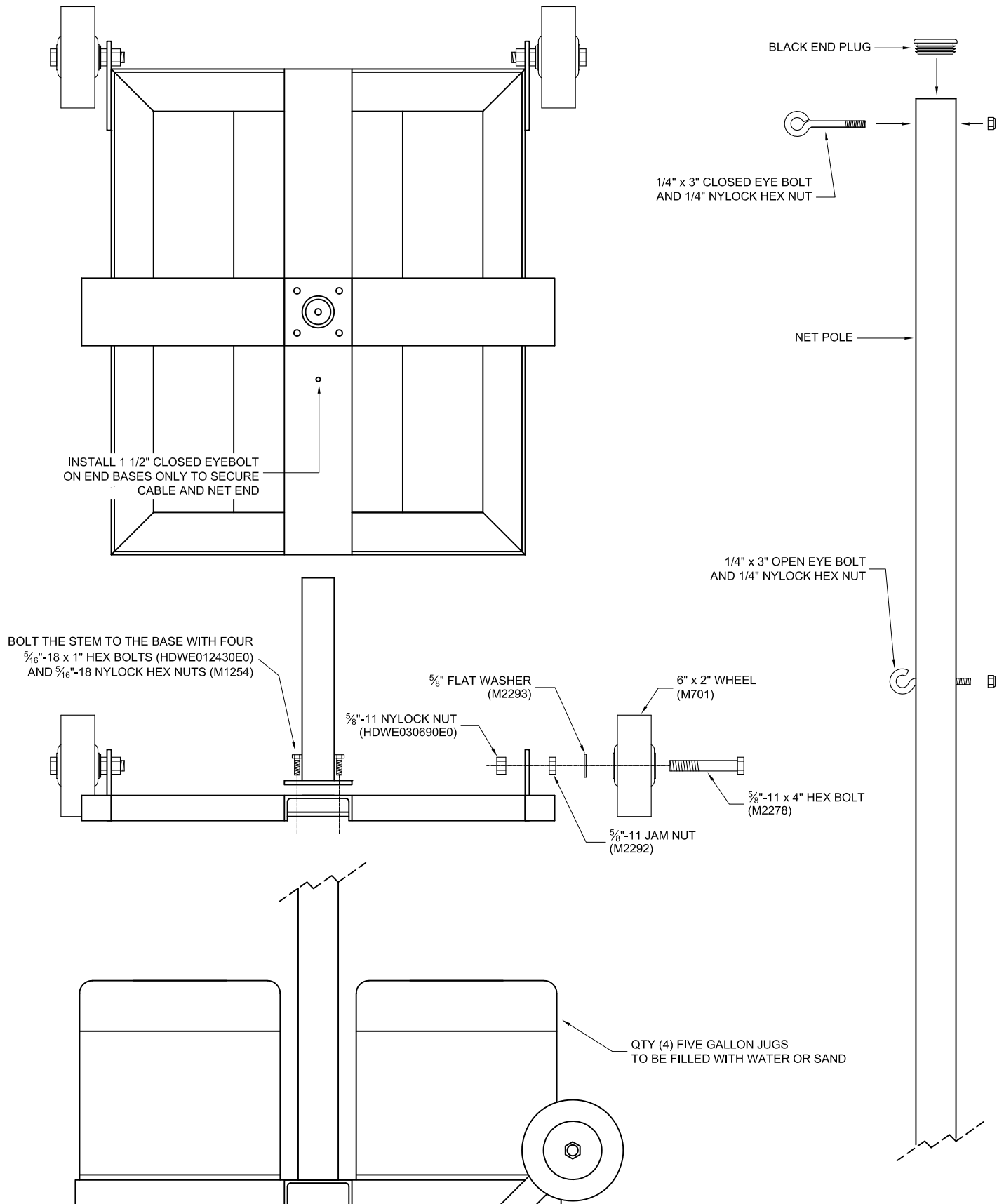
5. Lift the net and attach it to the eyebolts at the top and bottom of the poles using the snap hooks.





www.gillathletics.com  
800-637-3090

## 10' PORTABLE BALL STOP ASSEMBLY INSTRUCTIONS





www.gillathletics.com  
800-637-3090


## 10' AND 10' PORTABLE BALL STOP ASSEMBLY INSTRUCTIONS

### WARNING

- READ ALL CAUTIONS AND WARNINGS THOROUGHLY BEFORE USING THIS EQUIPMENT.
- READ ALL INSTRUCTIONS THOROUGHLY BEFORE ATTEMPTING TO ASSEMBLE THIS EQUIPMENT. ASSEMBLY OF THIS EQUIPMENT MUST BE DONE BY PHYSICALLY CAPABLE ADULTS ONLY.
- FAILURE TO COMPLY WITH THE INSTRUCTIONS, MAINTENANCE, AND WARNINGS MAY RESULT IN SERIOUS INJURIES AND/OR PROPERTY DAMAGE.
- WHILE IT CANNOT BE ELIMINATED, THE RISK OF INJURIES CAN BE GREATLY REDUCED BY FOLLOWING PROPER SAFETY GUIDELINES AND PROVIDING PROPER MAINTENANCE AND SAFETY INSPECTIONS.
- BALL STOPS ARE DESIGNED TO PROVIDE LIMITED PROTECTION FOR SPECTATORS. HOWEVER, STRICT SAFETY PRECAUTIONS AND ADULT SUPERVISION MUST BE OBSERVED AT ALL TIMES TO MINIMIZE THE POSSIBILITY OF ACCIDENTAL INJURIES.
- SPECTATORS MUST BE INSTRUCTED TO STAND A SAFE DISTANCE FROM THE NETTING, TO AVOID THE POSSIBILITY OF BODILY CONTACT WITH BALLS, OR OTHER EQUIPMENT.
- THE OWNER OF THIS EQUIPMENT IS RESPONSIBLE TO ENSURE THAT ALL INDIVIDUALS FOLLOW THESE SAFETY AND OPERATING INSTRUCTIONS TO AVOID INJURIES OR PROPERTY DAMAGE. PROPER USE AND SUPERVISION OF THIS EQUIPMENT IS ESSENTIAL TO HELP REDUCE THE POSSIBILITY OF ACCIDENTS OR INJURIES.
- DO NOT SUBSTITUTE FOR THE FACTORY-SUPPLIED CABLE, CABLE CLAMPS, AND HARDWARE.
- MAKE SURE NETTING DOESN'T CONTACT ANYTHING SOLID, SUCH AS A WALL OR CHAIN LINK FENCE.
- DO NOT ALLOW ANY INDIVIDUALS TO CLIMB POSTS OR NETS.
- USE EXTREME CAUTION WHEN WALKING AROUND THE BALL STOPS.
- NETS SHOULD ALWAYS BE LOWERED WHEN NOT IN USE AND ESPECIALLY IN HIGH WIND, SNOW, AND ICE STORMS.

### GENERAL MAINTENANCE

- INSPECT THIS EQUIPMENT FOR WEAR, LOOSE FITTINGS, DAMAGE AND PROPER STABILITY BEFORE EACH USE. REPLACE DEFECTIVE OR WORN PARTS IMMEDIATELY. IF IN DOUBT, DO NOT USE THIS EQUIPMENT UNTIL REPAIRED.
- THE NETS SHOULD BE DISMANTLED AND STORED WHEN NOT BEING USED. STORE IN A CLEAN DRY AREA.
- PERIODICALLY CHECK AND RE-TENSION ALL CABLES
- INSPECT NETTING BEFORE EACH USE FOR ANY HOLES. IF NETTING IS WORN OR DAMAGED, STOP USING IT UNTIL IT IS REPLACED OR REPAIRED.
- REGULARLY CHECK THE ENTIRE STRUCTURE FOR SIGNS OF CORROSION AND REPAINT WITH AN EXTERIOR GRADE, RUST-RESISTANT ENAMEL.

 **WARNING:** This product can expose you to Titanium Dioxide, which is known to the State of California to cause cancer. For more information go to [www.p65warnings.ca.gov](http://www.p65warnings.ca.gov).

E