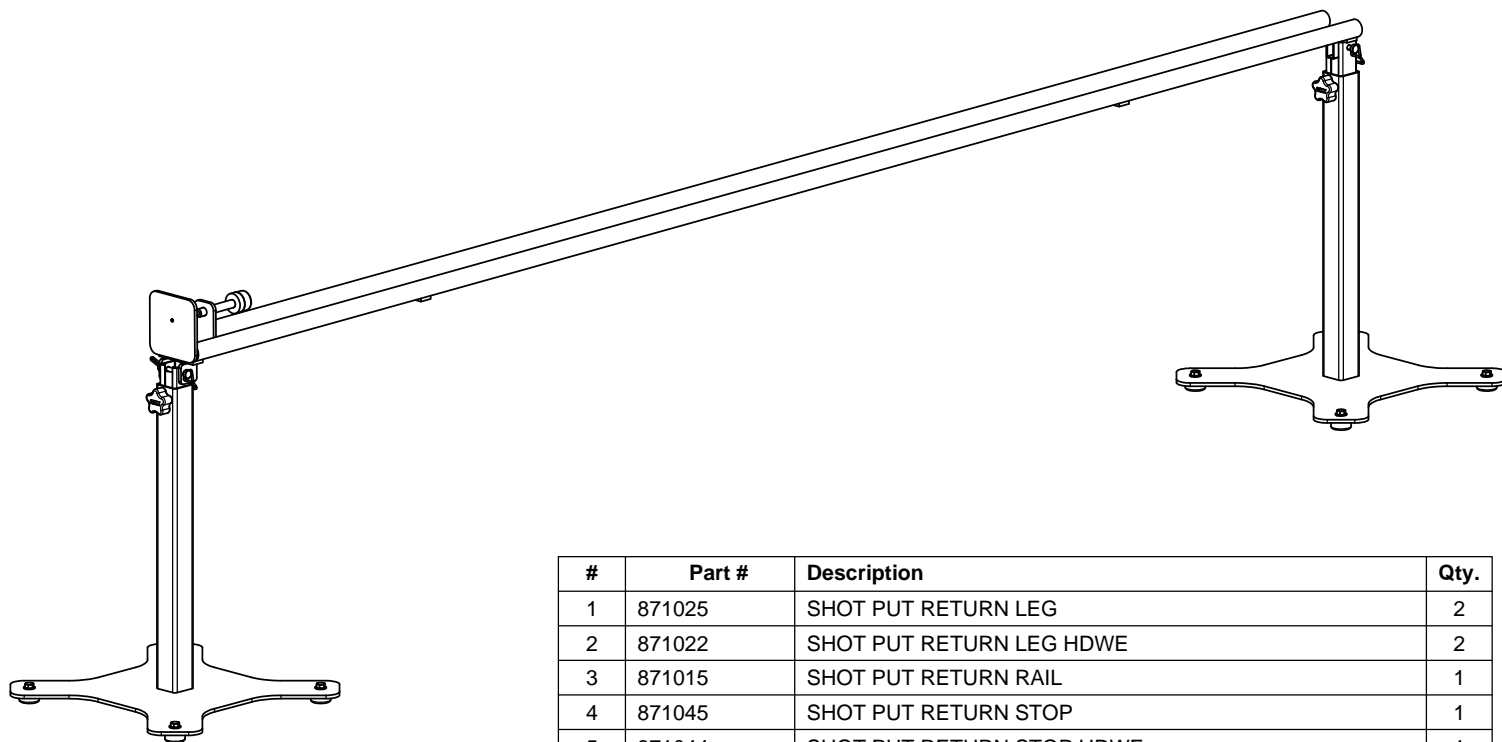


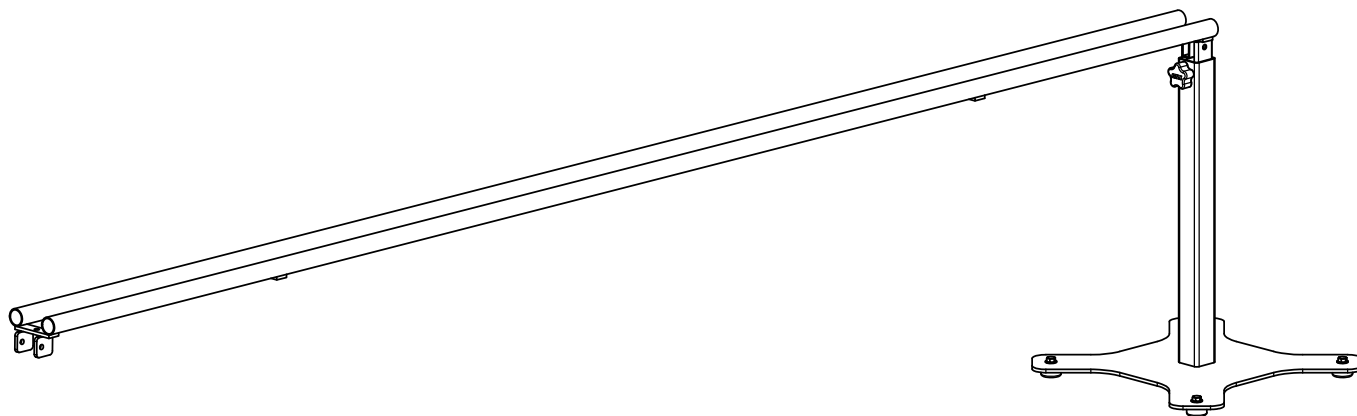


www.gillathletics.com
800-637-3090

SHOT PUT RETURN ASSEMBLY INSTRUCTIONS



#	Part #	Description	Qty.
1	871025	SHOT PUT RETURN LEG	2
2	871022	SHOT PUT RETURN LEG HDWE	2
3	871015	SHOT PUT RETURN RAIL	1
4	871045	SHOT PUT RETURN STOP	1
5	871044	SHOT PUT RETURN STOP HDWE	1



#	Part #	Description	Qty.
1	871025	SHOT PUT RETURN LEG	1
2	871022	SHOT PUT RETURN LEG HDWE	1
3	871015	SHOT PUT RETURN RAIL	1

**871 - 10' ADD ON KIT SOLD SEPARATELY

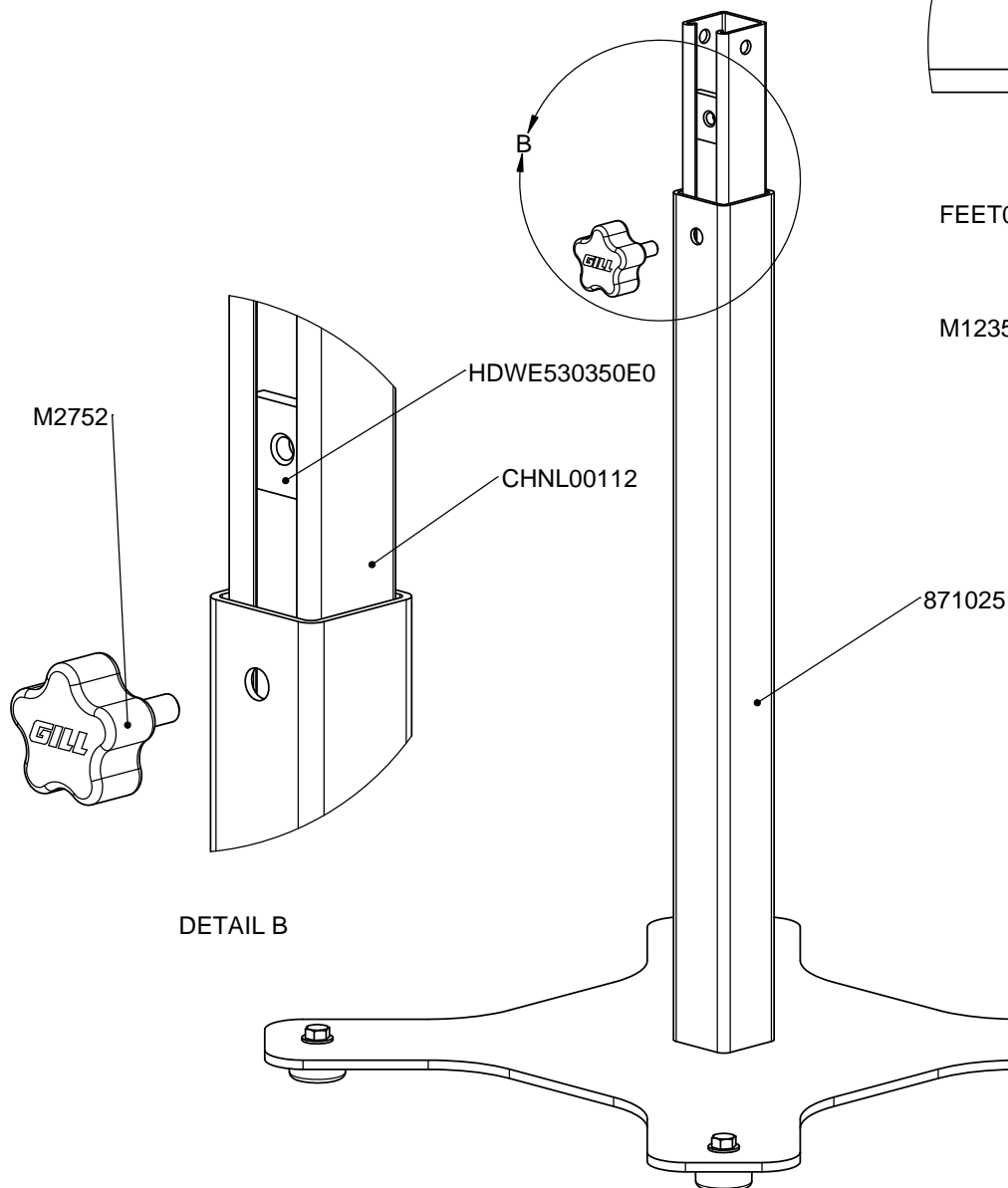
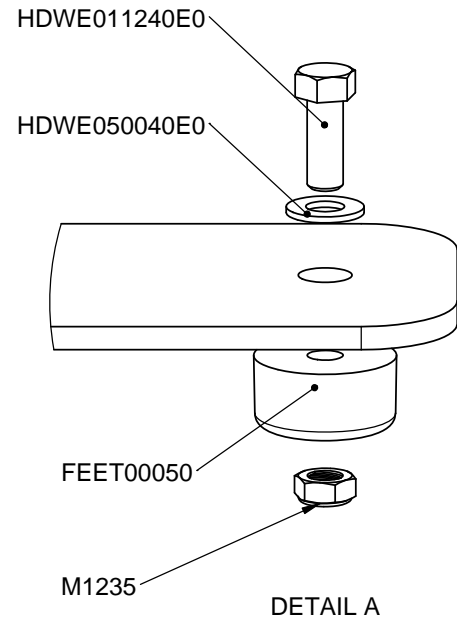
**87103CXXSP - CUSTOM BANNER SOLD SEPARATELY



www.gillathletics.com
800-637-3090

SHOT PUT RETURN ASSEMBLY INSTRUCTIONS

#	Part #	Description	QTY.
1	871025	LEG WELDMENT	1
2	CHNL00112	INNER LEG CHANNEL	1
3	HDWE530350E0	3/8" SQUARE NUT	1
4	M2752	KNOB; 3/8"-16 THREADED STUD	1
5	FEET00050	RUBBER FOOT	4
6	M1235	3/8"-16 THIN NYLOCK NUT	4
7	HDWE050040E0	3/8" FLATWASHER	4
8	HDWE011240E0	3/8"-16 X 1" HEX BOLT	4

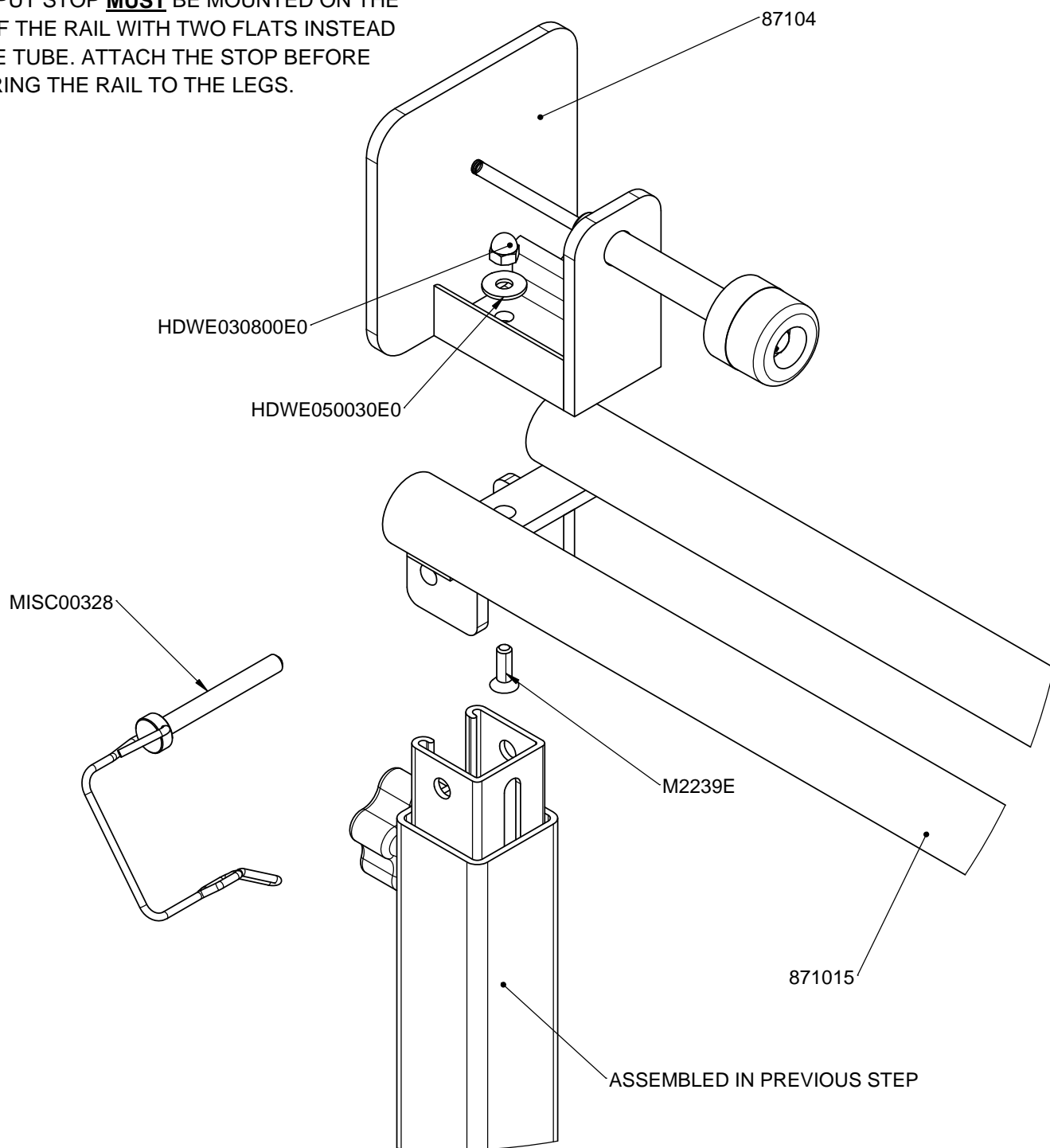




www.gillathletics.com
800-637-3090

SHOT PUT RETURN ASSEMBLY INSTRUCTIONS

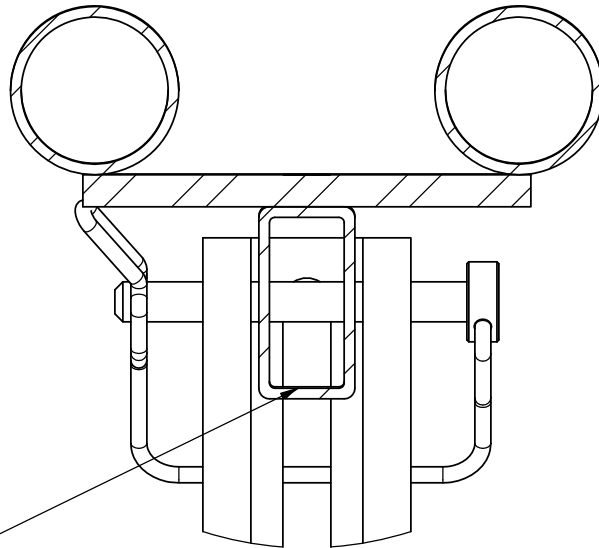
SHOT PUT STOP **MUST** BE MOUNTED ON THE
END OF THE RAIL WITH TWO FLATS INSTEAD
OF THE TUBE. ATTACH THE STOP BEFORE
SECURING THE RAIL TO THE LEGS.



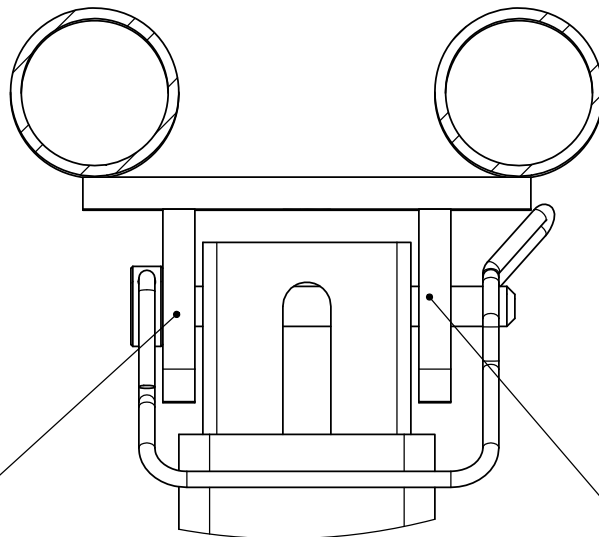


www.gillathletics.com
800-637-3090

SHOT PUT RETURN ASSEMBLY INSTRUCTIONS



ONE END OF THE RAIL HAS A RECTANGULAR TUBE WELDED ON (SHOWN ABOVE). THIS TUBE WILL SLIDE INTO THE OPENING OF THE UNISTRUT.

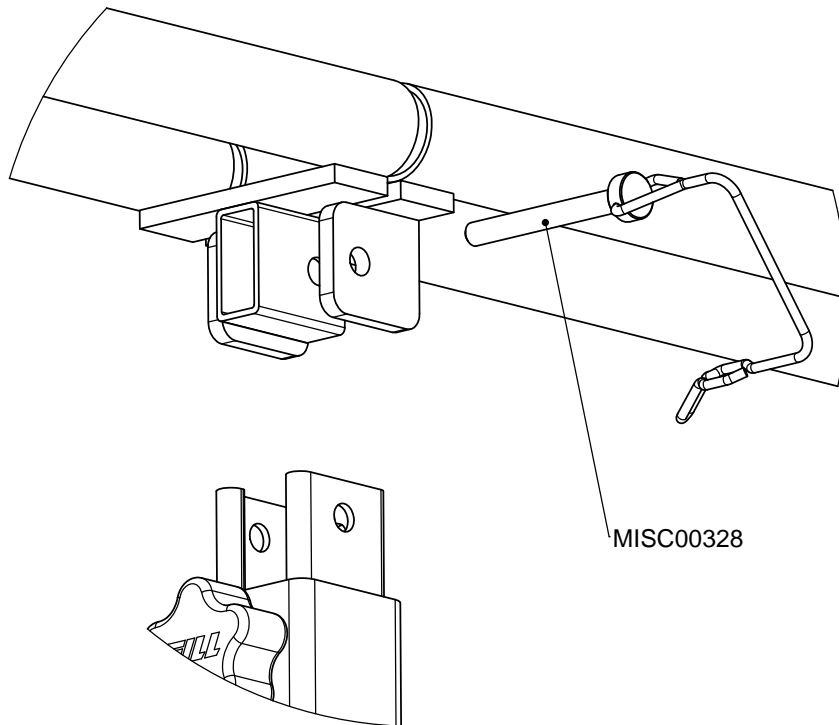


ONE END OF THE RAIL HAS TWO FLATS WELDED ON (SHOWN ABOVE). THESE FLATS WILL STRADDLE THE UNISTRUT.

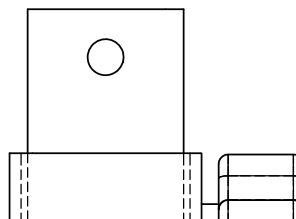
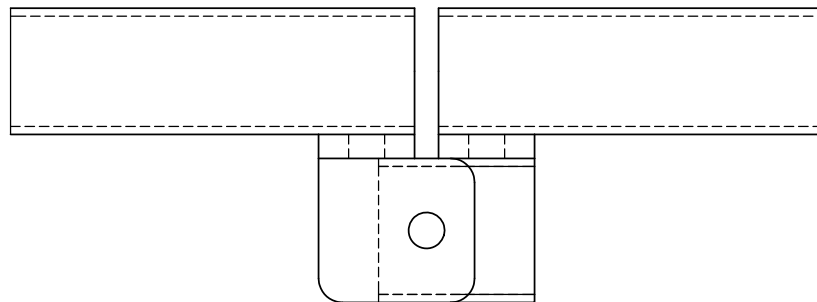


www.gillathletics.com
800-637-3090

SHOT PUT RETURN ASSEMBLY INSTRUCTIONS



WHERE TWO RAILS MEET, THEY WILL SHARE A MOUNTING POINT. THIS AIDS
IN KEEPING TRANSITIONS SMOOTH FROM RAIL TO RAIL





www.gillathletics.com
800-637-3090

SHOT PUT RETURN ASSEMBLY INSTRUCTIONS

