



www.gillathletics.com  
800-637-3090

# ELITE OUTDOOR FENCE PADS

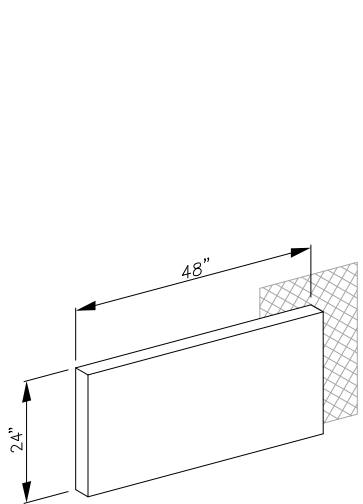
## xx - COLOR SELECTION

02	- Royal Blue
03	- Red
04	- White
06	- Yellow
09	- Gray
12	- Black
15	- Forest Green

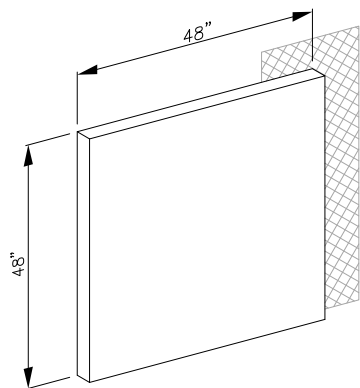


## WARNING

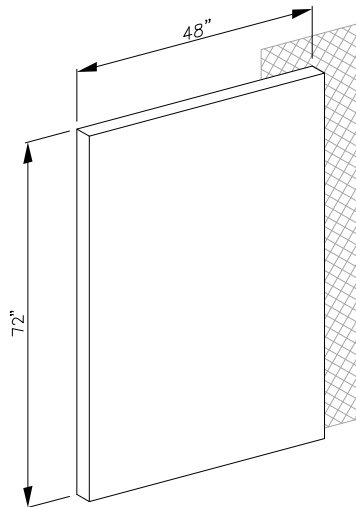
This pad is provided to reduce the possibility of minor injuries. However, any activity involving motion and severe impacts may result in serious injuries, including but not limited to paralysis or death. No pad can guarantee the prevention of serious head or neck injuries that are due to a violent impact while participating in various sports activities.



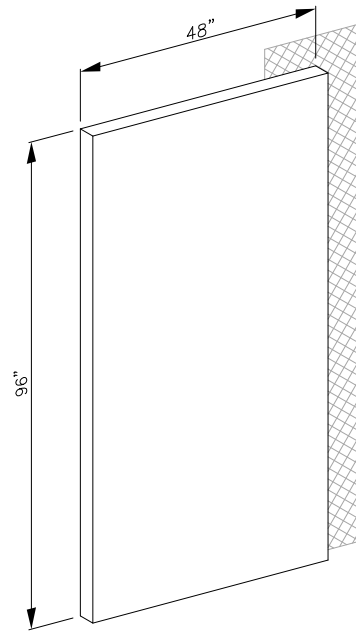
- 36502XX - ELITE OUTDOOR PADDING; 4'x2'
- 36502XXSP - ELITE OUTDOOR GRAPHIC PADDING; 4'x2'



- 36504XX - ELITE OUTDOOR PADDING; 4'x4'
- 36504XXSP - ELITE OUTDOOR GRAPHIC PADDING; 4'x4'



- 36506XX - ELITE OUTDOOR PADDING; 4'x6'
- 36506XXSP - ELITE OUTDOOR GRAPHIC PADDING; 4'x6'



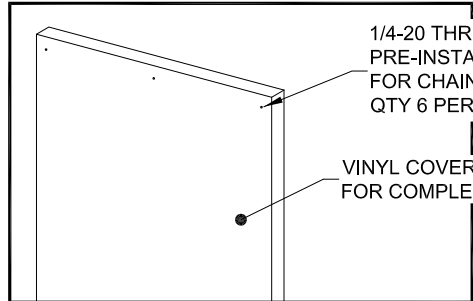
- 36508XX - ELITE OUTDOOR PADDING; 4'x8'
- 36508XXSP - ELITE OUTDOOR GRAPHIC PADDING; 4'x8'

PROJECT NUMBER \_\_\_\_\_

PROJECT NAME \_\_\_\_\_

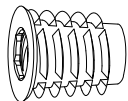
NOTE: PADS MUST BE HUNG  
IN THE ORIENTATION SHOWN

## BACK VIEW



1/4-20 THREADED WOOD INSERT  
PRE-INSTALLED ON PAD  
FOR CHAIN LINK FENCE ATTACHMENT  
QTY 6 PER PAD (12 FOR PADS OVER 6')

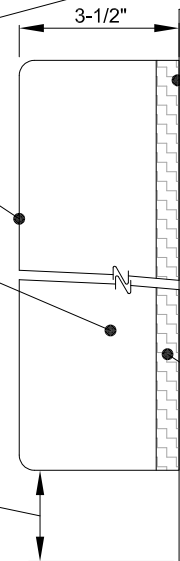
VINYL COVER CONTINUES ON BACK SIDE  
FOR COMPLETE COVERAGE



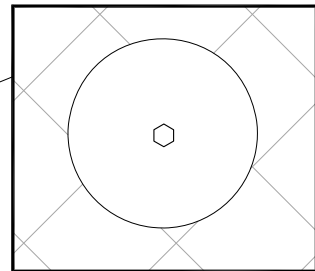
19oz UV TREATED  
VINYL-COATED  
POLYESTER COVER  
(SELECT COLOR)

3" THICK  
POLYURETHANE  
FOAM CORE

3"  
MAXIMUM ALLOWABLE DIMENSION  
TO MINIMIZE THE POSSIBILITY OF  
BODY CONTACT WITH THE WALL



## SECTION VIEW



— 3650 - CHAIN LINK FENCE HDWE;  
FENDER WASHERS (6) AND BOLTS (6);  
FOR ONE 4' WIDE PAD UNDER 6'

— 3651 - CHAIN LINK FENCE HDWE;  
FENDER WASHERS (9) AND BOLTS (9);  
FOR ONE 4' WIDE PAD OVER 6'

1/2" THICK  
WEATHER-RESISTANT  
PVC