



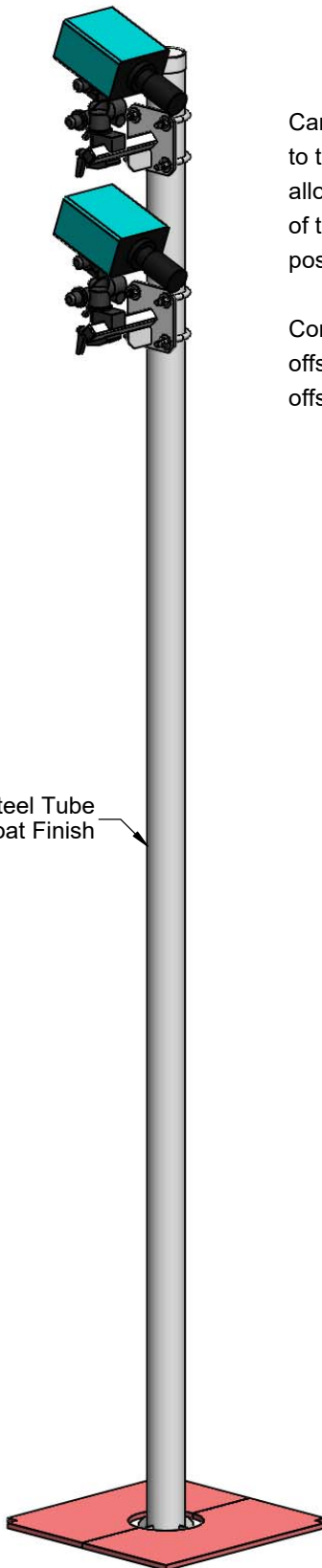
www.gillathletics.com
800-637-3090

E39918 - FINISH LINE CAMERA POLE - GROUND MOUNT SPECIFICATIONS

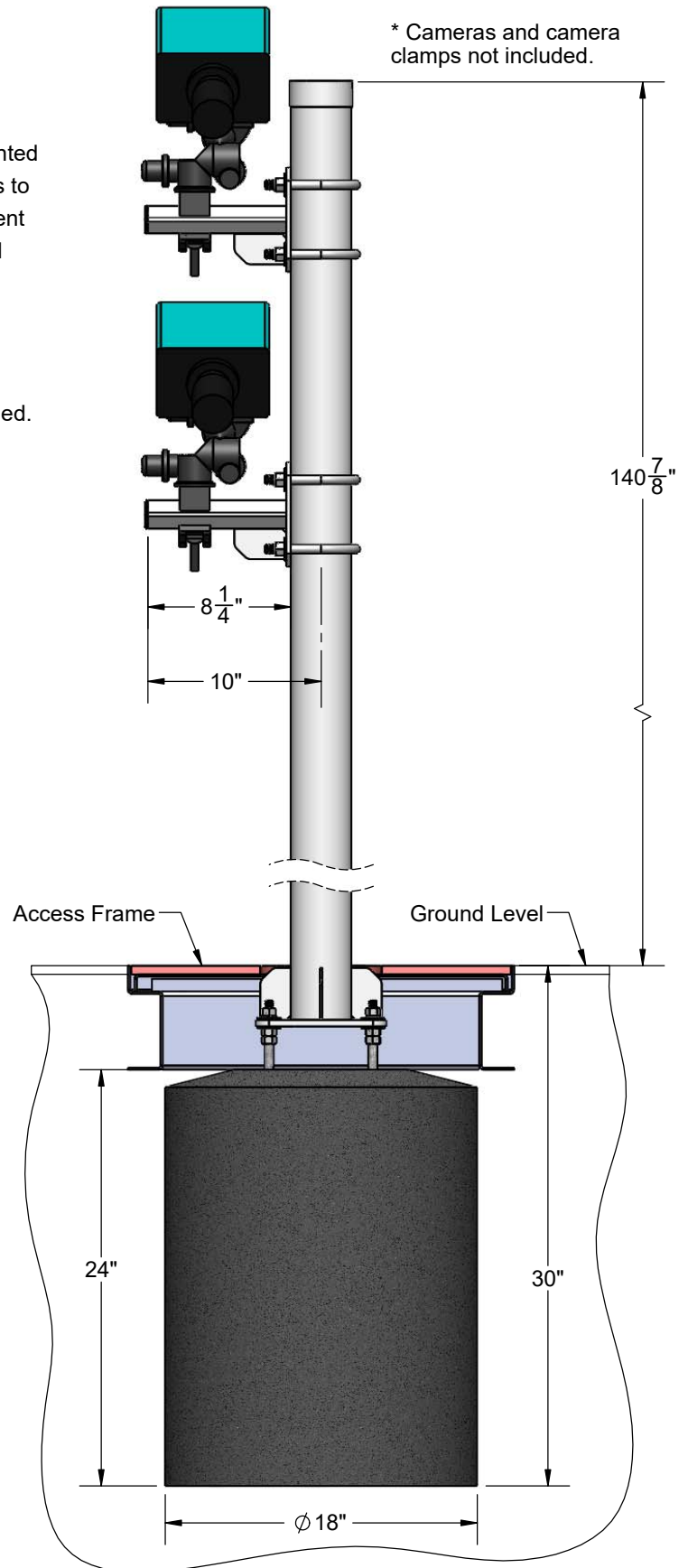
Camera offsets are mounted to the upright with u-bolts to allow for infinite adjustment of the camera height and position.

Comes with two camera offsets and additional offsets can easily be added.

3-1/2" OD Steel Tube with Powder Coat Finish



* Cameras and camera clamps not included.





www.gillathletics.com
800-637-3090

E39918 - FINISH LINE CAMERA POLE, GROUND MOUNTED INSTRUCTIONS

Step 1:

Locate the position of the finish line camera pole and excavate hole roughly 30" deep by 18" diameter.

NOTE: It is recommended that the track striping be completed BEFORE digging the hole for the footing.

The anchor bolts MUST be set in a 6" by 6" square pattern. Spin two nuts onto each anchor bolt as far as they will go and add washer. The anchor bolts should be set so that the top of the washers are 3-1/2" below the finished elevation.

To help keep the anchor bolts in the correct position during the concrete pour, it is recommended that you make a wood template with a 6" by 6" hole pattern and fasten the anchor bolts to it.

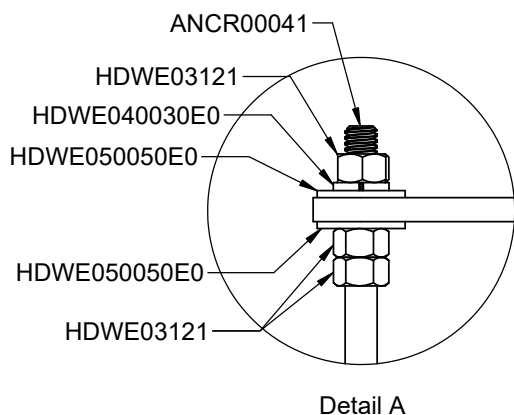
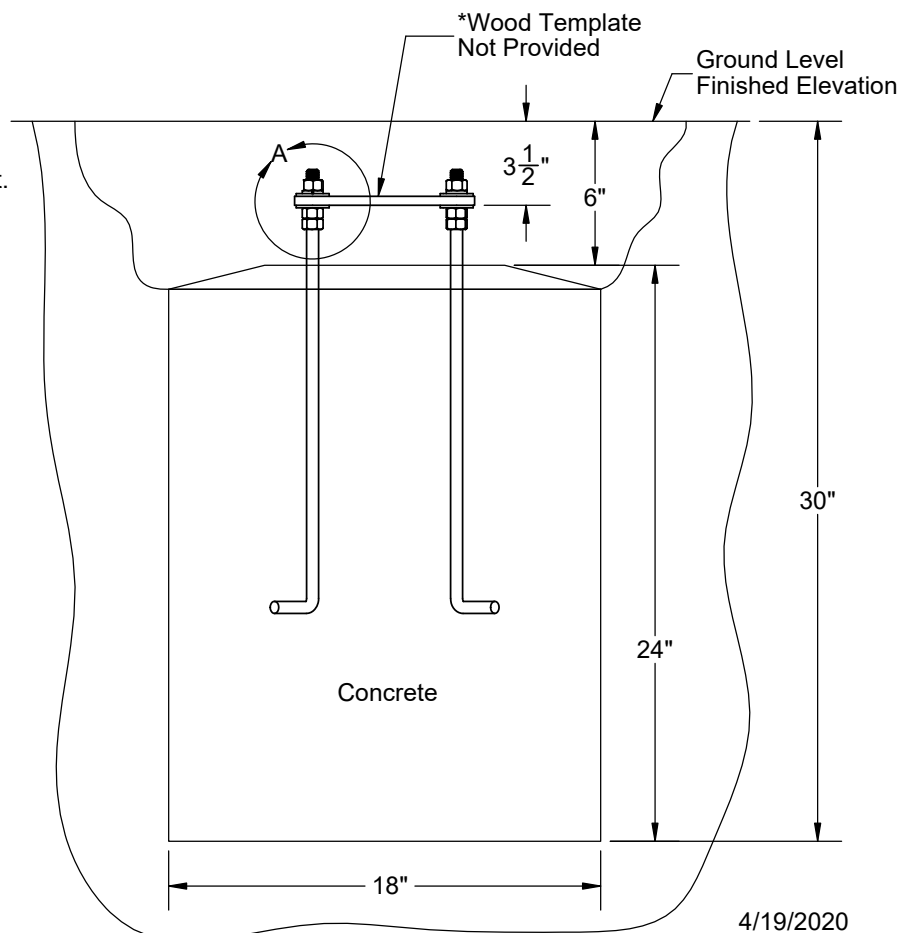
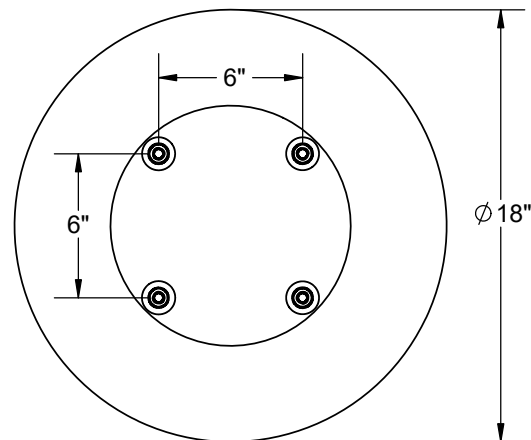
Set the anchor bolts in position and pour concrete. Ensure that the threads of the anchor bolts do not get any concrete on them. It is recommended that the exposed threads be masked with tape.

The top of the concrete pier should be set to 6" below finished elevation. The top of the pier should be sloped away from the anchor bolts so that water does not collect.

Let the concrete cure for at least one day before proceeding.

Tool List:

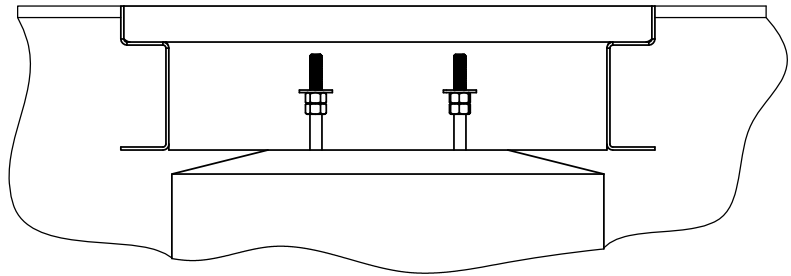
(2) Persons
(2) 3/4" Wrench
(1) Ladder
Digging Equipment
Concrete



Step 2:

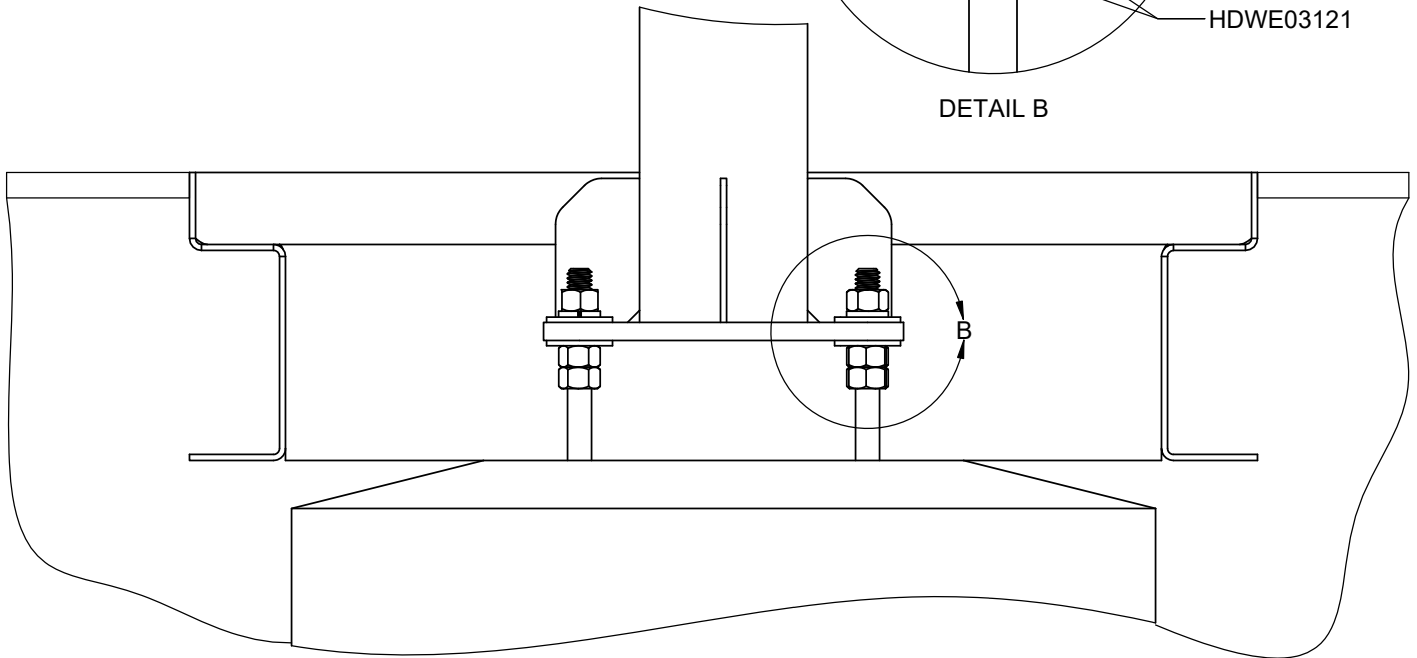
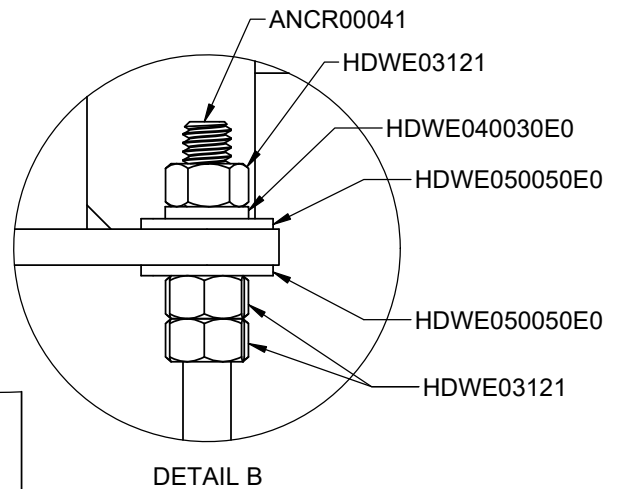
Install the F30410 Access Frame.
 See separate instructions.

Ensure that the Access Frame can
 drain in some way so that it does
 not fill with water.



Step 3:

Fasten the upright pole to the anchor
 bolts. Adjust the nuts under the base
 plate to plumb the pole if needed.

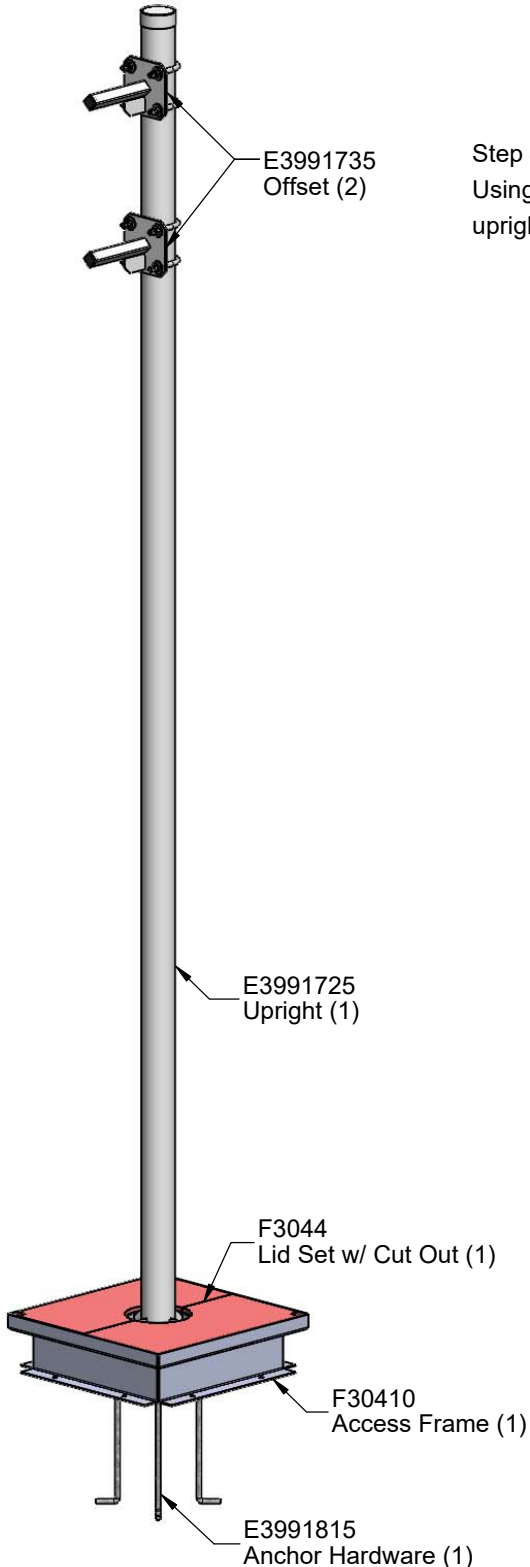




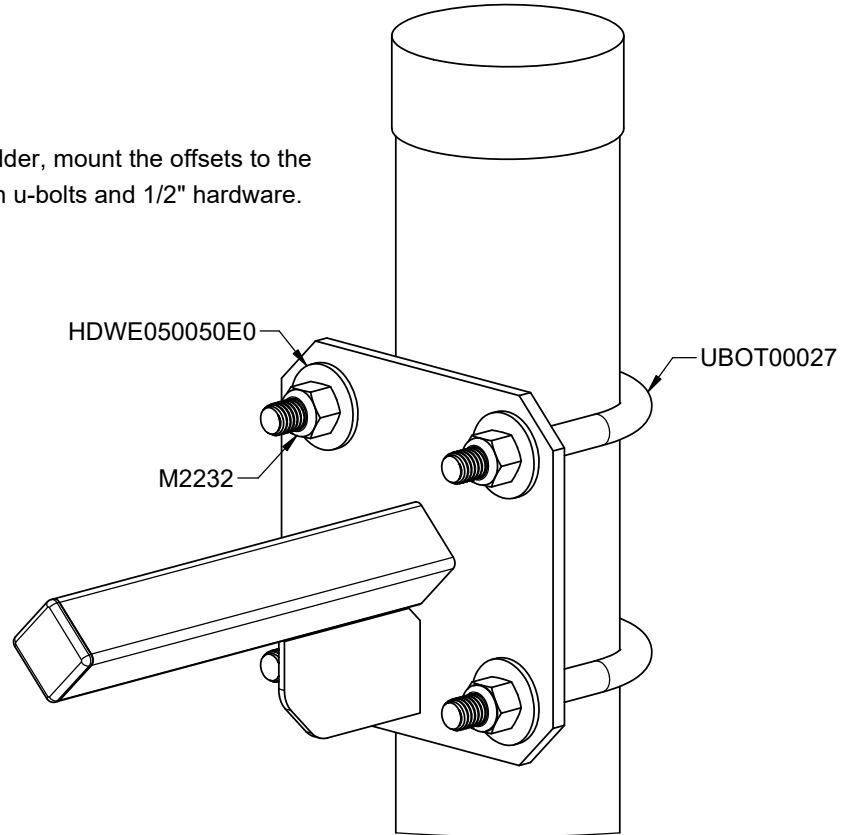
www.gillathletics.com
800-637-3090

E39918 - FINISH LINE CAMERA POLE, GROUND MOUNTED INSTRUCTIONS

NOTE: A ladder is needed access the top of the pole. It is recommended that there be a flat level surface next to the pole.



Step 4:
Using a ladder, mount the offsets to the upright with u-bolts and 1/2" hardware.



PART NUMBER	DESCRIPTION	QTY.
UBOT00027	U-BOLT 1/2"-13 FOR 3-1/2" OD ZINC PLATED	4
HDWE050050E0	1/2" Flatwasher	16
M2232	1/2"-13 Nylock Hex Nut	8
ANCR00041	L-Bolt 1/2"-13 x 18"	4
HDWE03121	1/2" Hex Nut	12
HDWE040030E0	1/2" Lockwasher	4
PLTE00055000	MOUNTING PLATE	2

▲ WARNING: This product can expose you to Titanium Dioxide, which is known to the State of California to cause cancer. For more information go to www.p65warnings.ca.gov.

E